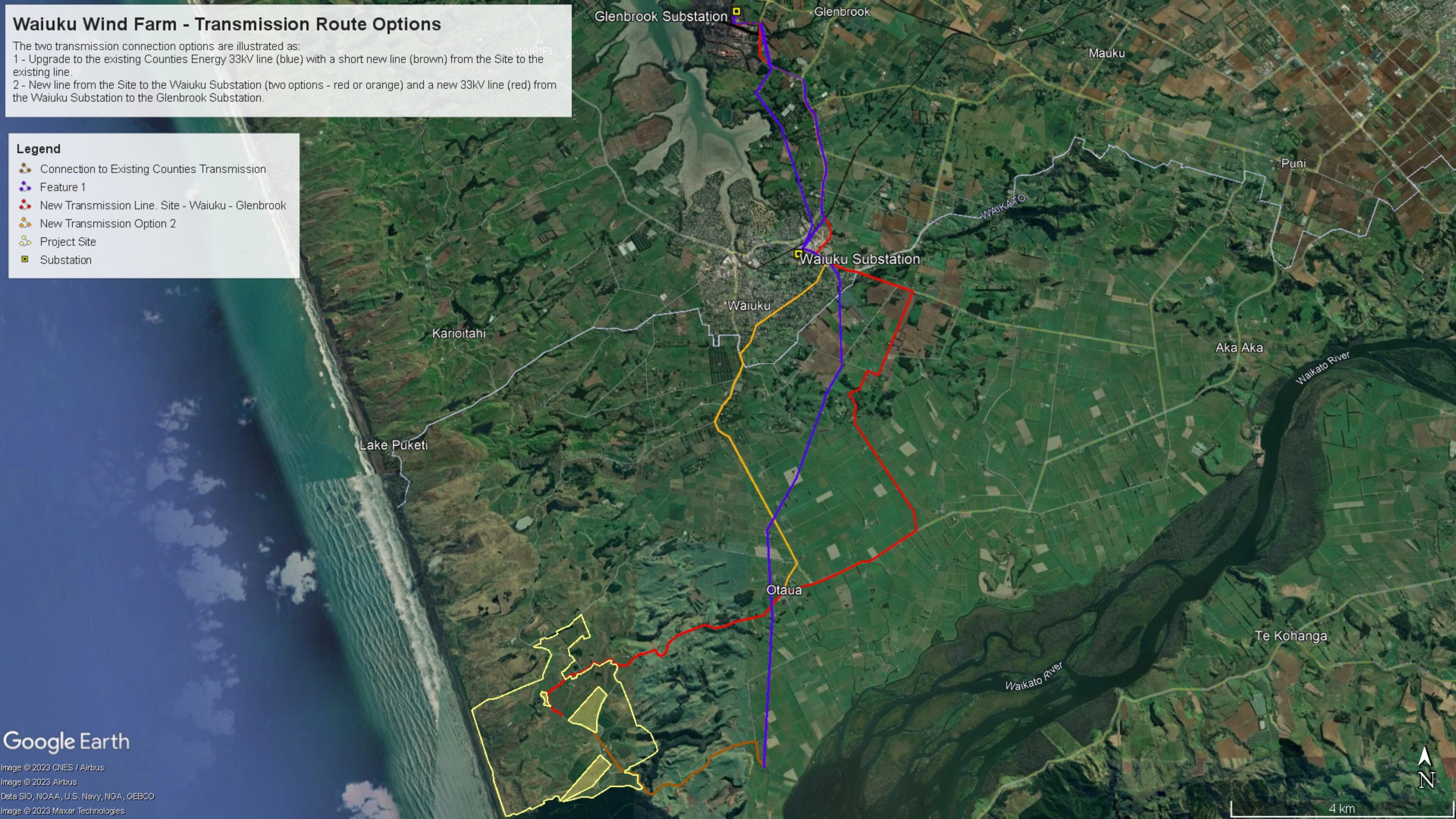


Waiuku Wind Farm - Transmission Route Options

The two transmission connection options are illustrated as:
1 - Upgrade to the existing Counties Energy 33kV line (blue) with a short new line (brown) from the Site to the existing line.
2 - New line from the Site to the Waiuku Substation (two options - red or orange) and a new 33kV line (red) from the Waiuku Substation to the Glenbrook Substation.

Legend

- Connection to Existing Counties Transmission
- Feature 1
- New Transmission Line. Site - Waiuku - Glenbrook
- New Transmission Option 2
- Project Site
- Substation



Google Earth

Image © 2023 CNES / Airbus
Image © 2023 Airbus
Data SIO, NOAA, U.S. Navy, NGA, GEBCO
Image © 2023 Maxar Technologies

4 km

