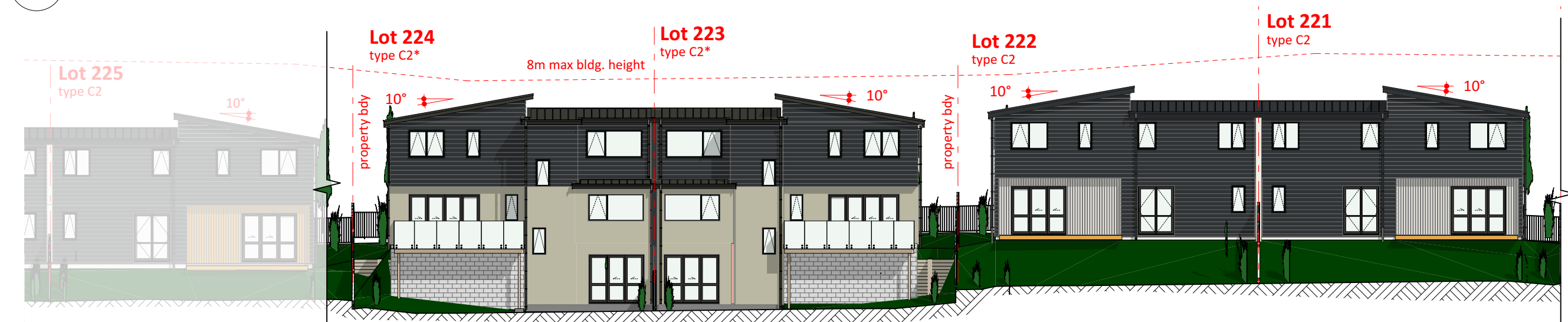
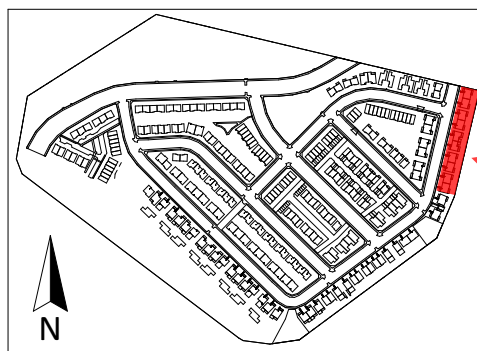


**1 Lot 219 - 228, South-East (Kauri Rd) Elevation**  
RC103 Scale 1:200

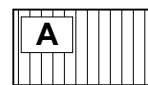


**2 Lot 219 - 228 South East (Kauri Road) Elevation Cont.**  
RC103 Scale 1:200

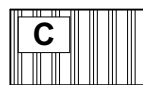


Key Plan

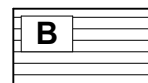
### MATERIAL KEY



**A** Shiplap  
Product: TBC  
Finish: TBC



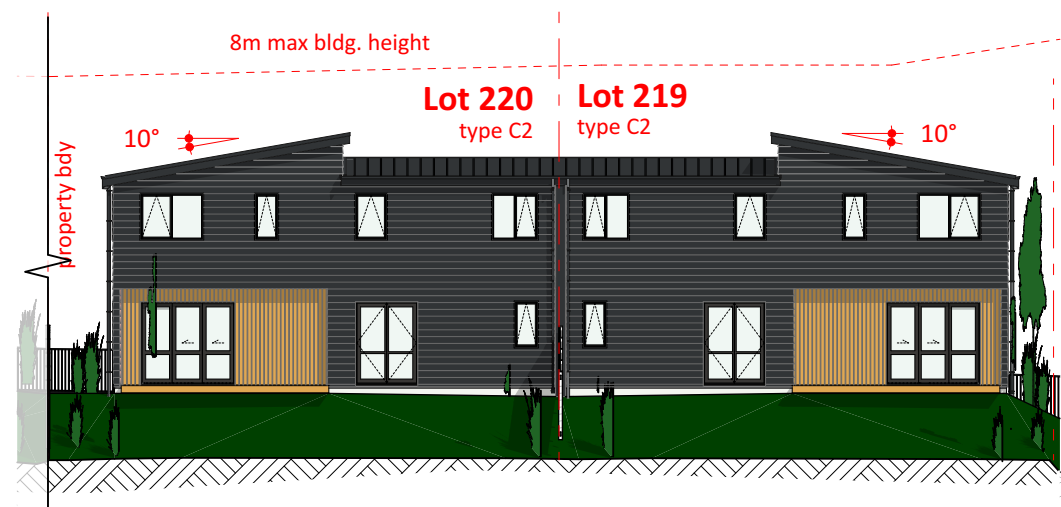
**C** Profiled Metal  
Product: TBC  
Finish: TBC



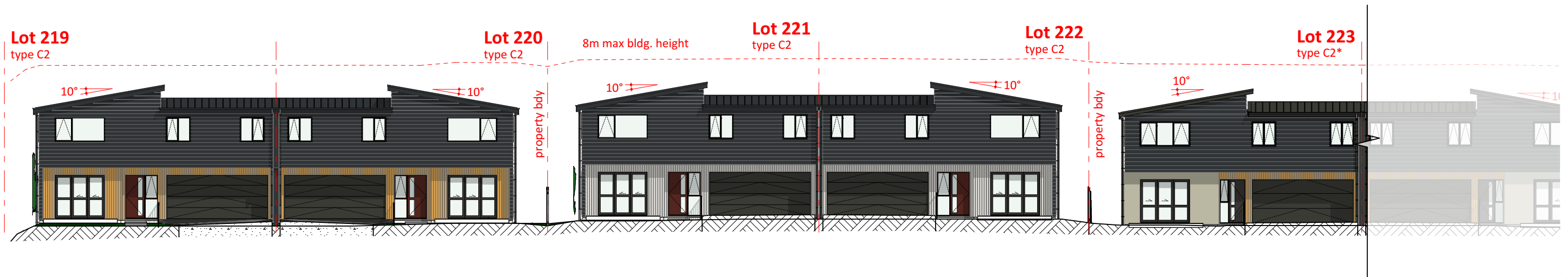
**B** Bevelback  
Product: TBC  
Finish: TBC



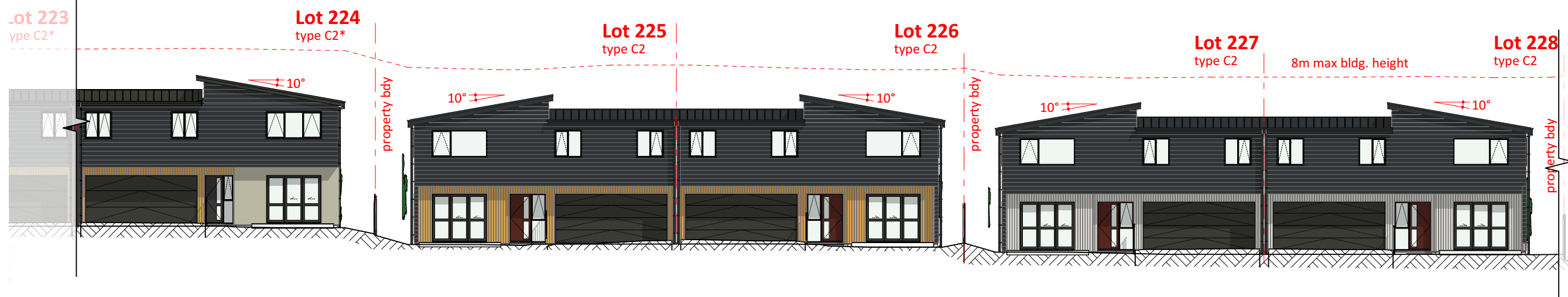
**D** Light Weight Concrete  
Product: TBC  
Finish: TBC



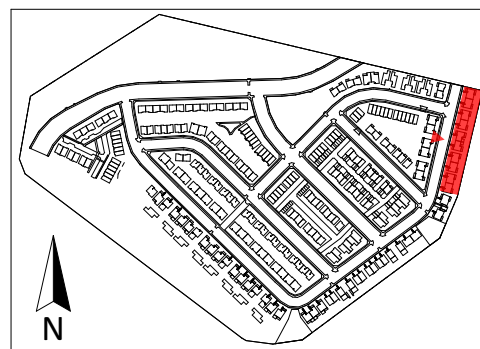
**3 Lot 219 - 228 South East (Kauri Road) Elevation Cont.**  
RC103 Scale 1:200



**1** Lot 219 - 228, North-West (Road 4) Elevation  
RC103 Scale 1:200

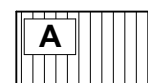


**2** Lot 219 - 228, North-West (Road 4) Elevation  
RC103 Scale 1:200

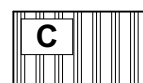


Site Key

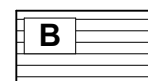
## MATERIAL KEY



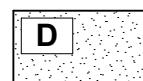
**A** Shiplap  
Product: TBC  
Finish: TBC



**C** Profiled Metal  
Product: TBC  
Finish: TBC



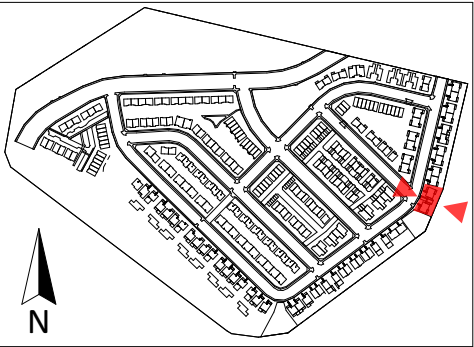
**B** Bevelback  
Product: TBC  
Finish: TBC



**D** Light Weight Concrete  
Product: TBC  
Finish: TBC

No	Description	Modified by	Date
A	Developed Design - Fast Track Application		4/11/2022

DATE	ORIGINAL SCALE	ORIGINAL SIZE
17/11/2022	1:200	A3
DRAWING NO.	REVISION	
44314-DR-RC121	A	



Site Key

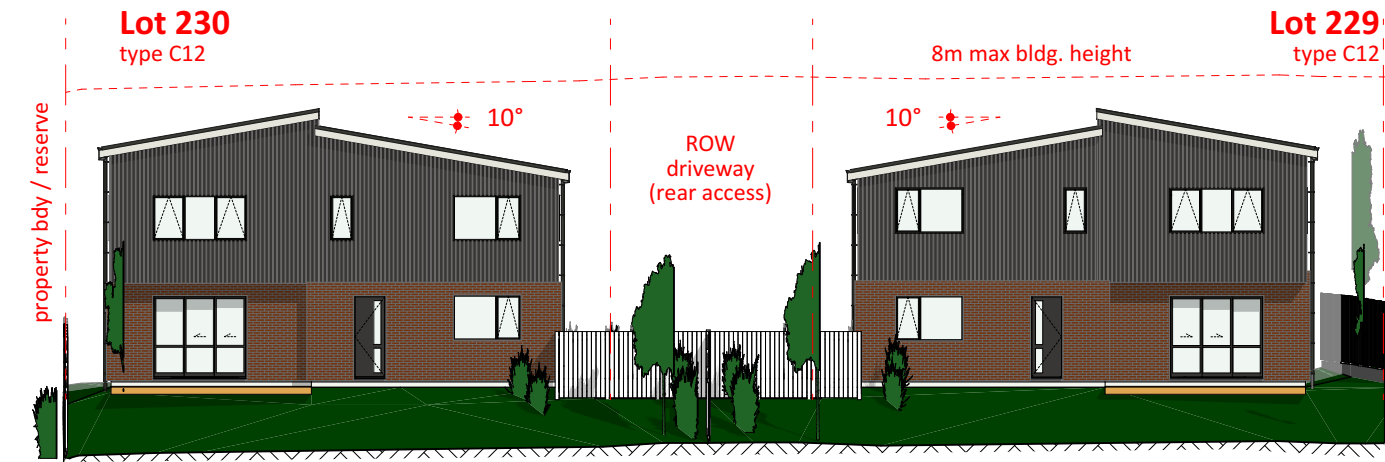
MATERIAL KEY

- A

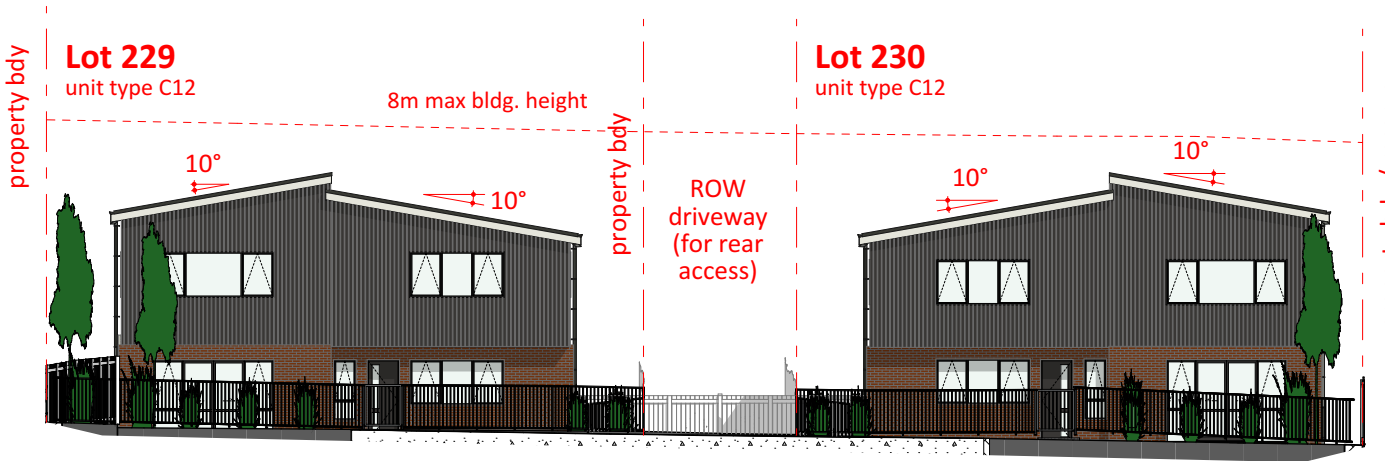
Shiplap  
Product: TBC  
Finish: TBC
- C

Profiled Metal  
Product: TBC  
Finish: TBC
- E

Brick Veneer  
Product: TBC  
Finish: TBC



1 Lot 229 - 230, South-East (Kauri Rd) Elevation  
RC104 Scale 1:200



2 Lot 229 - 230, North (Road 4) Elevation  
RC104 Scale 1:200



PLANNERS | SURVEYORS | ENGINEERS  
ARCHITECTS | ENVIRONMENTAL

Neil Construction Limited  
Kauri Road Development  
2-10 Kauri Road, Whenuapai  
Auckland 0618

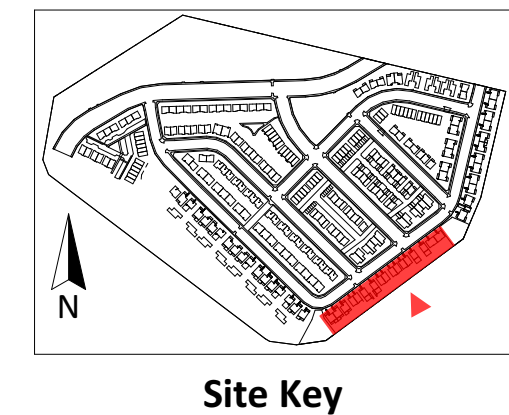
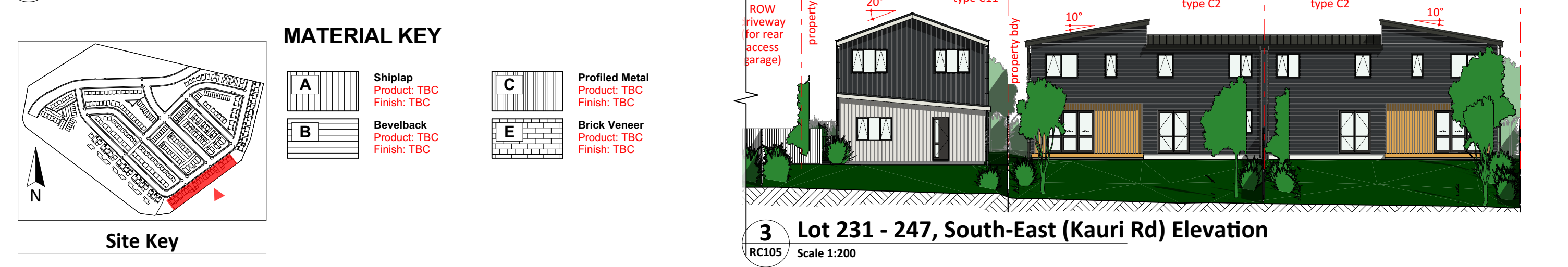
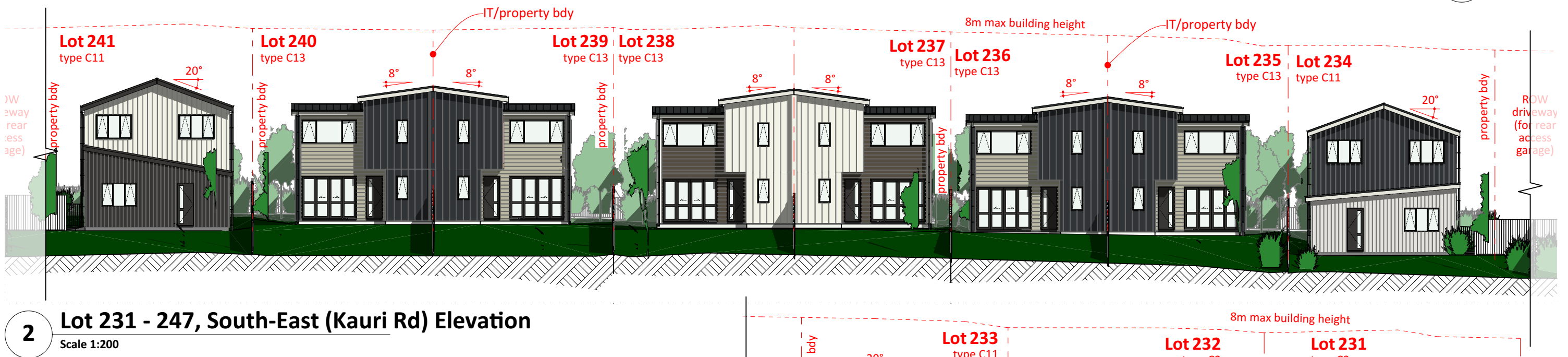
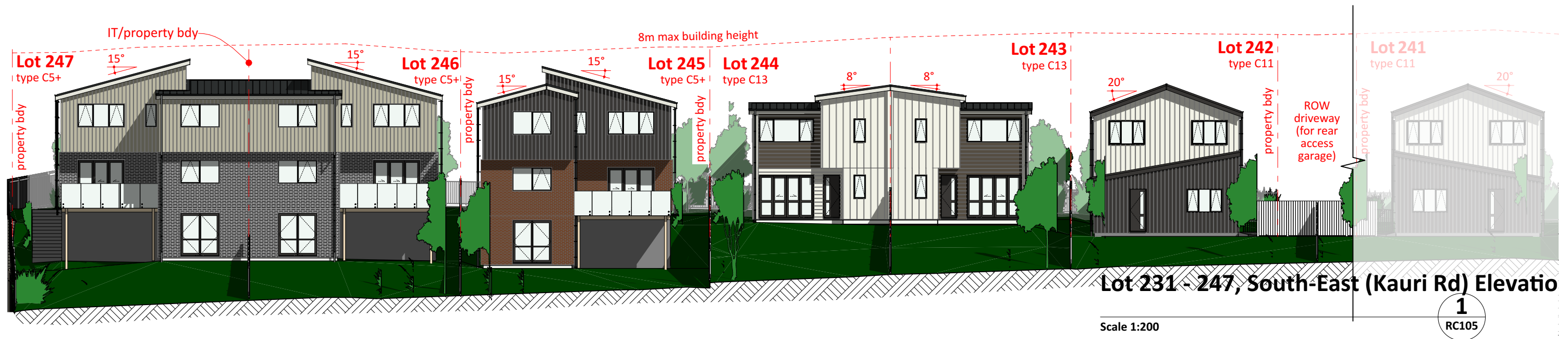
Site Elevation, Lot 229,230

DEVELOPED DESIGN

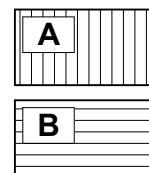
No	Description	Modified by	Date
A	Developed Design - Fast Track Application		4/11/2022

DATE	ORIGINAL SCALE	ORIGINAL SIZE
17/11/2022	1:200	A3
DRAWING NO.	REVISION	
44314-DR-RC122	A	



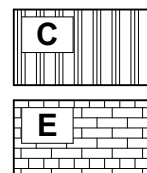


### MATERIAL KEY



**A** Shiplap  
Product: TBC  
Finish: TBC

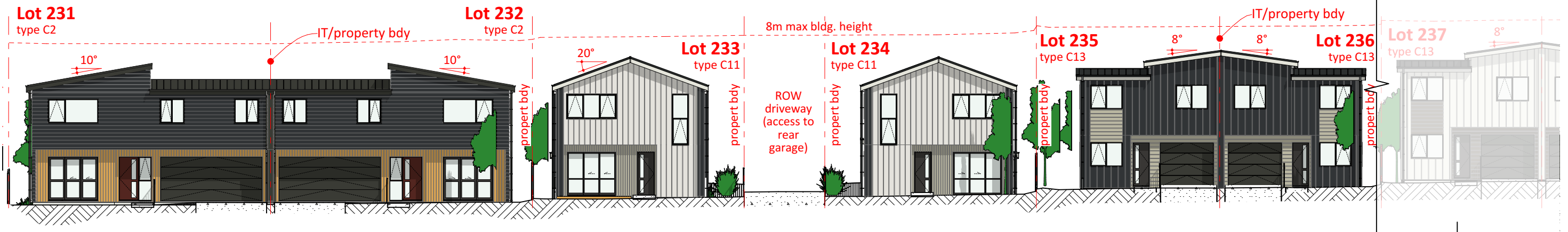
**B** Bevelback  
Product: TBC  
Finish: TBC



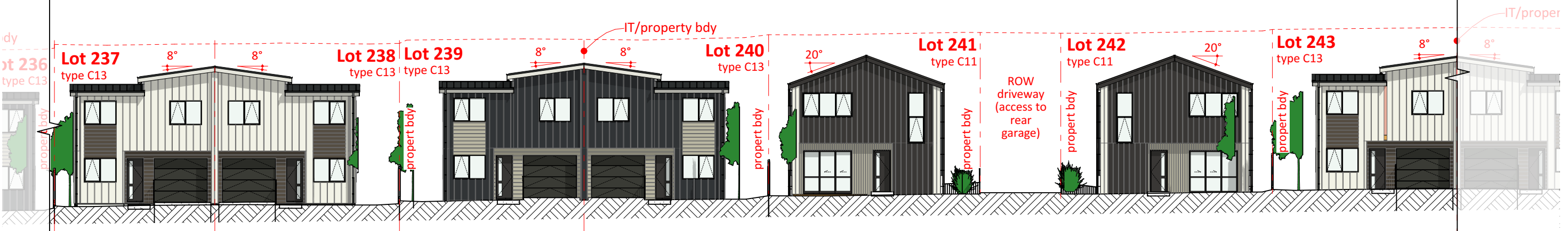
**C** Profiled Metal  
Product: TBC  
Finish: TBC

**E** Brick Veneer  
Product: TBC  
Finish: TBC

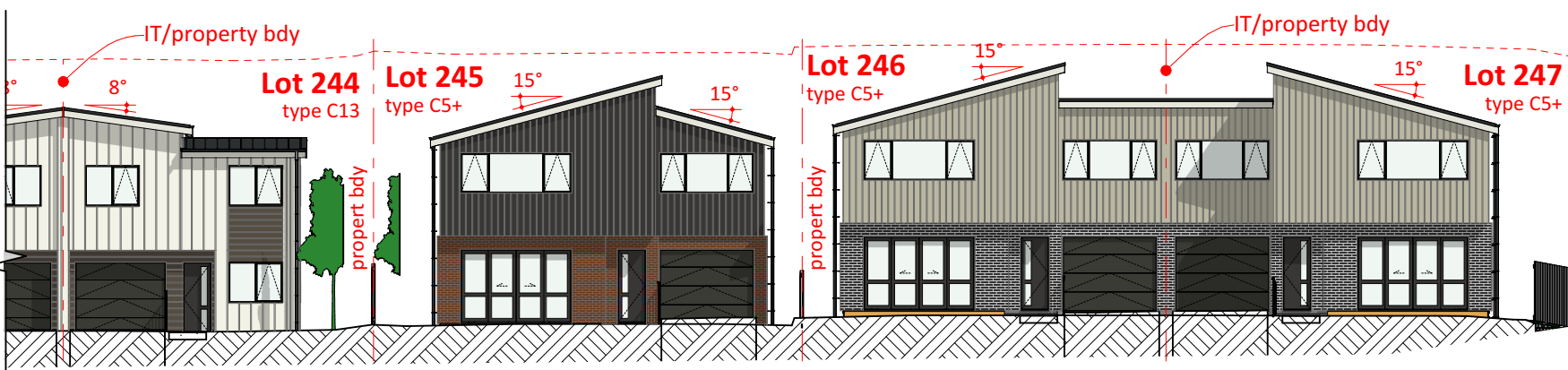




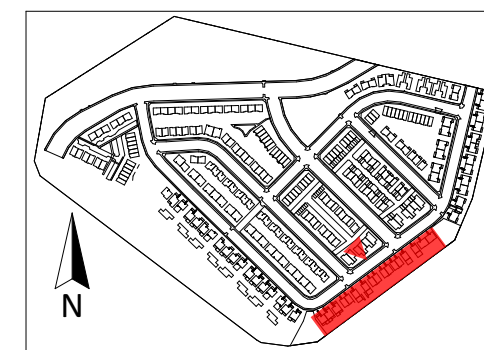
**1 Lot 231 - 247, North (Road 4) Elevation**  
RC105 Scale 1:200



**2 Lot 231 - 247, North (Road 4) Elevation**  
RC105 Scale 1:200



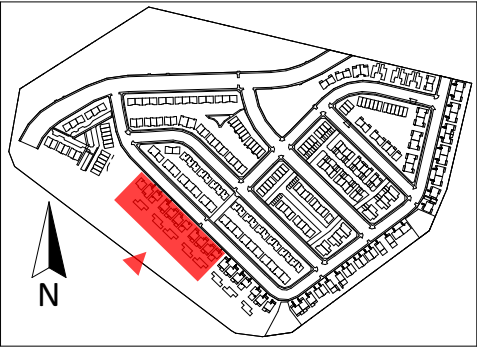
**3 Lot 231 - 247, North (Road 4) Elevation**  
RC105 Scale 1:200



**Site Key**

## MATERIAL KEY

<b>A</b>	<b>Shi lap</b> Product: TBC Finish: TBC
<b>B</b>	<b>Bevel back</b> Product: TBC Finish: TBC
<b>C</b>	<b>Profiled Metal</b> Product: TBC Finish: TBC
<b>E</b>	<b>Brick Veneer</b> Product: TBC Finish: TBC



**MATERIAL KEY**

- A** Shiplap  
Product: TBC  
Finish: TBC
- C** Profiled Metal  
Product: TBC  
Finish: TBC
- E** Brick Veneer  
Product: TBC  
Finish: TBC

**1 Lot 266 - 270 South-West (Brigham Creek Rd) Elevation**  
RC101 Scale 1:200

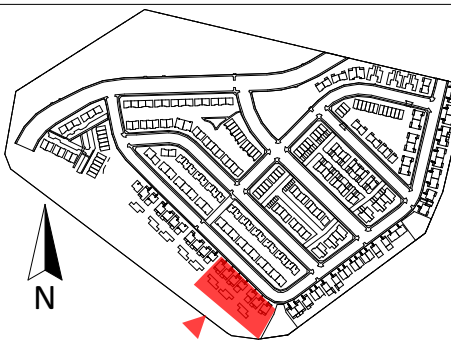


**2 Lot 266 - 270 South-West (Brigham Creek Rd) Elevation**  
RC101 Scale 1:200

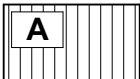
No	Description	Modified by	Date
A	Developed Design - Fast Track Application		4/11/2022

DATE	ORIGINAL SCALE	ORIGINAL SIZE
17/11/2022	1:200	A3
DRAWING NO.	REVISION	
44314-DR-RC125	A	

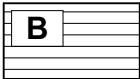




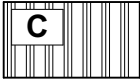
## MATERIAL KEY



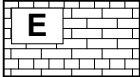
**Shiplap**  
Product: TBC  
Finish: TBC



**Bevelback**  
Product: TBC  
Finish: TBC



**Profiled Metal**  
Product: TBC  
Finish: TBC



**Brick Veneer**  
Product: TBC  
Finish: TBC

**Cato  
Bolam**

creating great places

PLANNERS | SURVEYORS | ENGINEERS  
ARCHITECTS | ENVIRONMENTAL

**Neil Construction Limited**

**Kauri Road Development**

**2-10 Kauri Road, Whenuapai  
Auckland 0618**

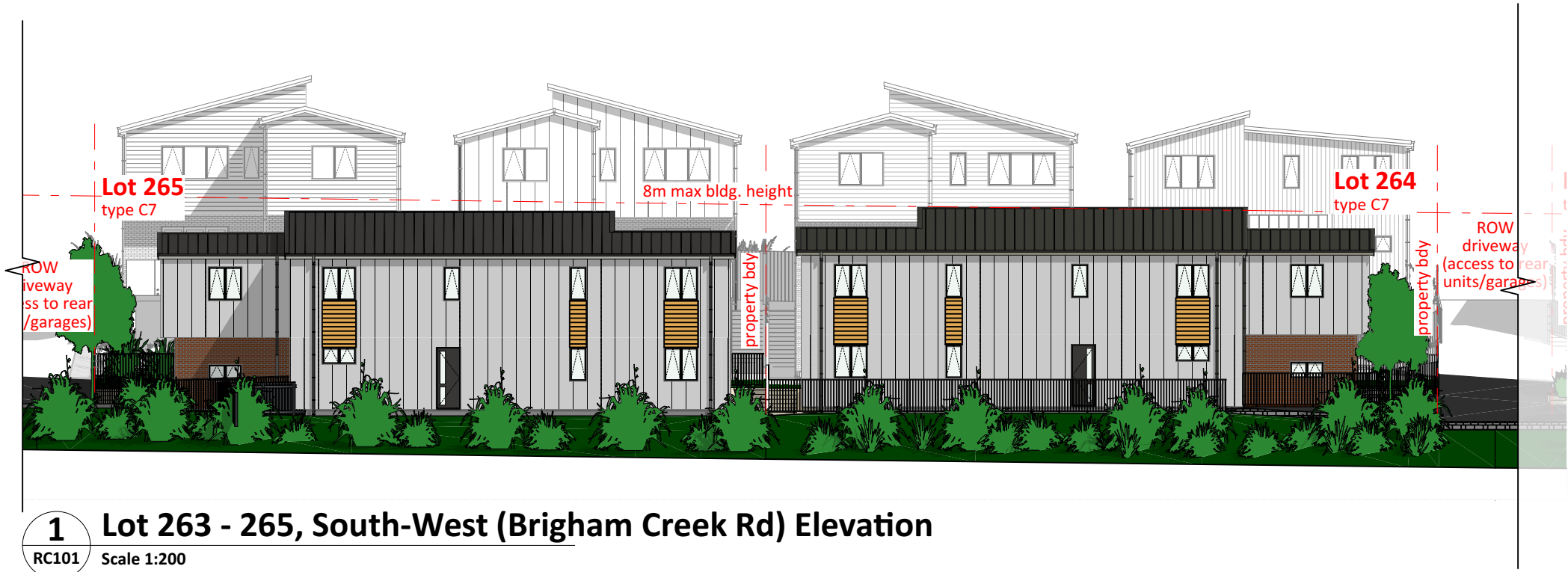
**Site Elevation, Lot 263 - 265 (South -  
West, Brigham Creek Rd)**

## DEVELOPED DESIGN

No	Description	Modified by	Date
A	Developed Design - Fast Track Application		4/11/2022

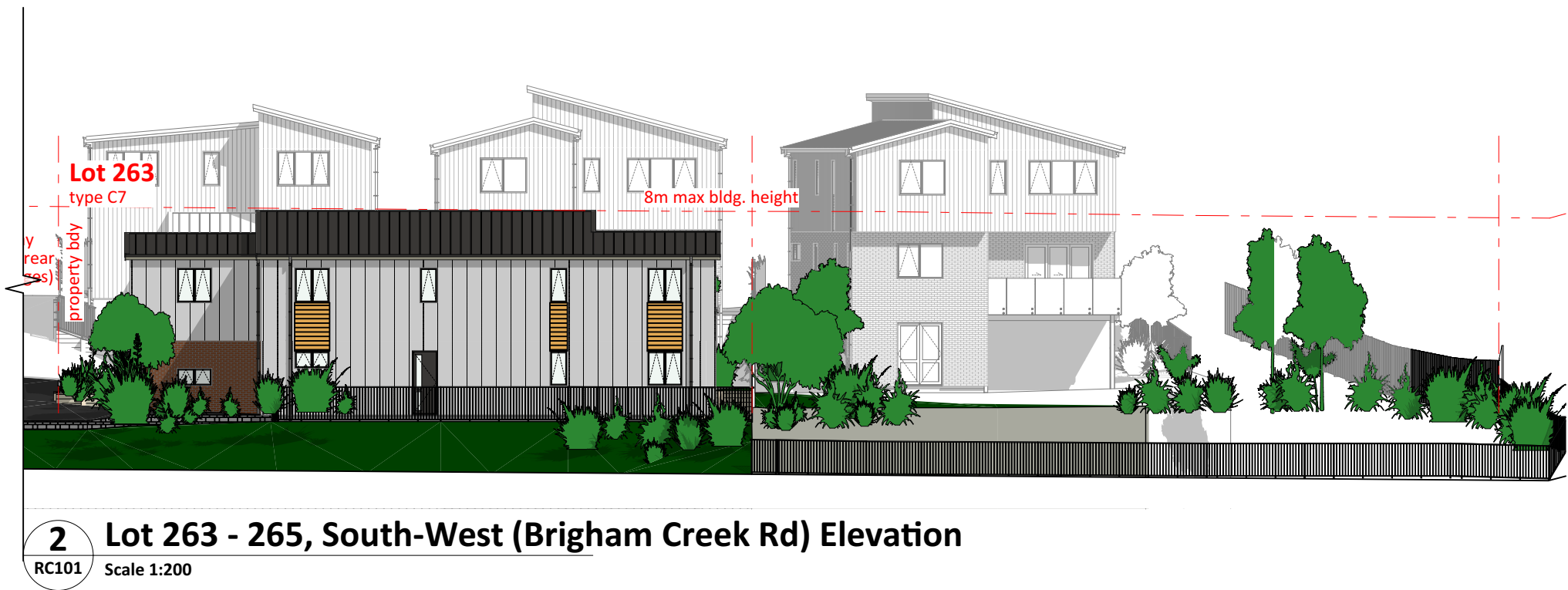
DATE	ORIGINAL SCALE	ORIGINAL SIZE
17/11/2022	1:200	A3

DRAWING NO.	REVISION
44314-DR-RC126	A



## 1 Lot 263 - 265, South-West (Brigham Creek Rd) Elevation

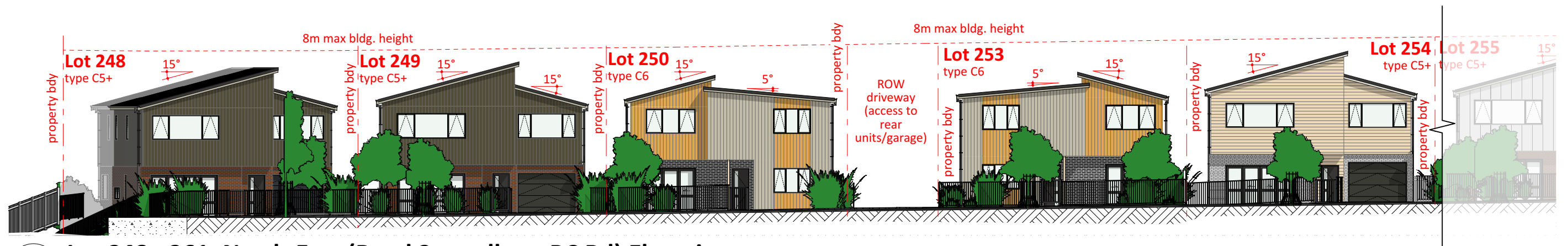
RC101 Scale 1:200



## 2 Lot 263 - 265, South-West (Brigham Creek Rd) Elevation

RC101 Scale 1:200



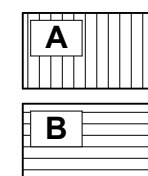


**1** Lot 248 - 261, North-East (Road 2 parallel to BC Rd) Elevation  
RC101 Scale 1:200



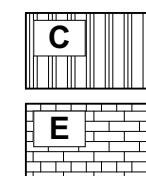
**2** Lot 248 - 261, North-East (Road 2 parallel to BC Rd) Elevation  
RC101 Scale 1:200

## MATERIAL KEY



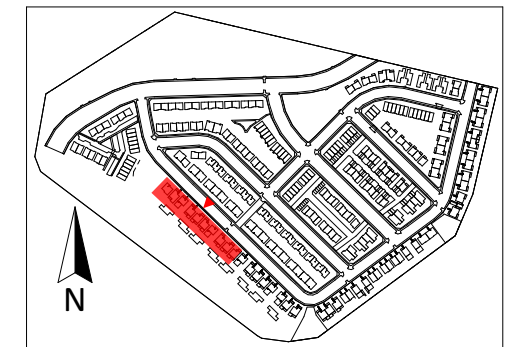
**A** Shiplap  
Product: TBC  
Finish: TBC

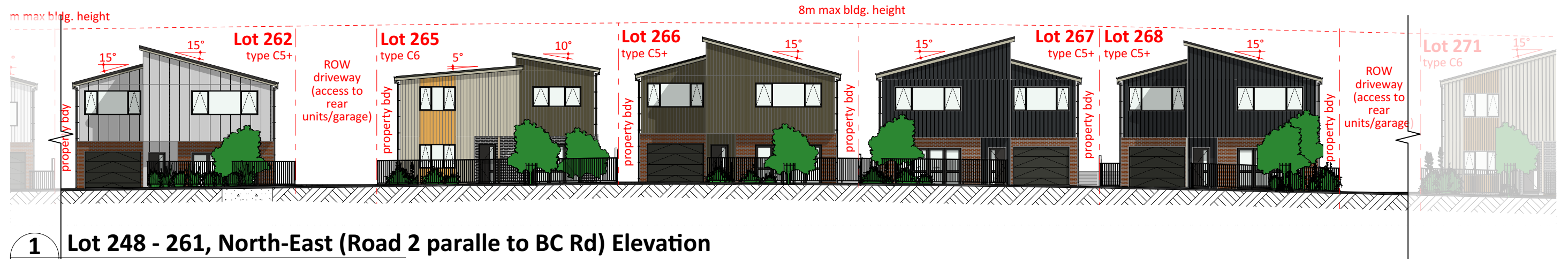
**B** Bevelback  
Product: TBC  
Finish: TBC



**C** Profiled Metal  
Product: TBC  
Finish: TBC

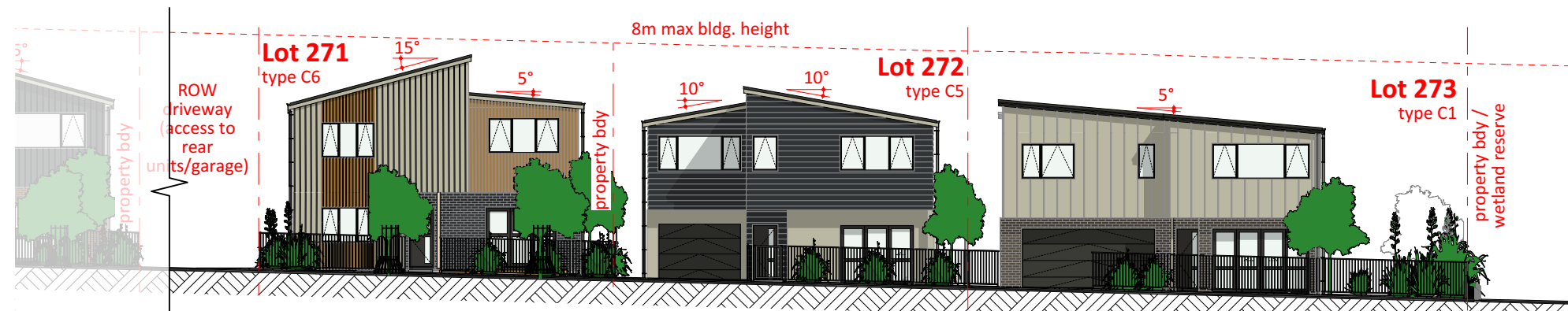
**E** Brick Veneer  
Product: TBC  
Finish: TBC





## 1 Lot 248 - 261, North-East (Road 2 parallel to BC Rd) Elevation

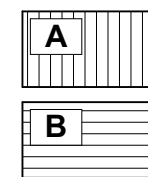
RC101 Scale 1:200



## 2 Lot 248 - 261, North-East (Road 2 parallel to BC Rd) Elevation

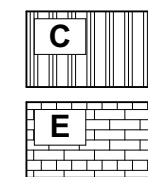
RC101 Scale 1:200

### MATERIAL KEY



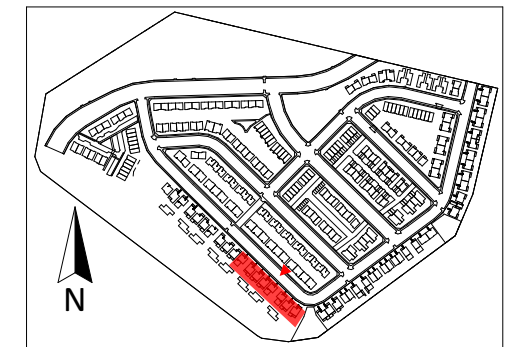
**Shiplap**  
Product: TBC  
Finish: TBC

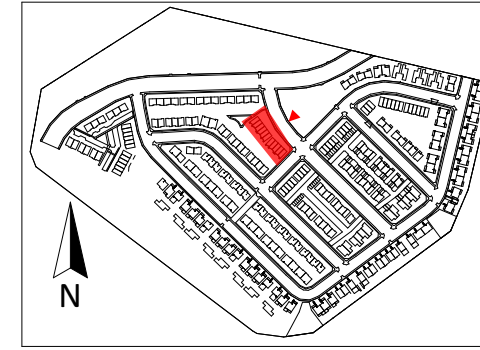
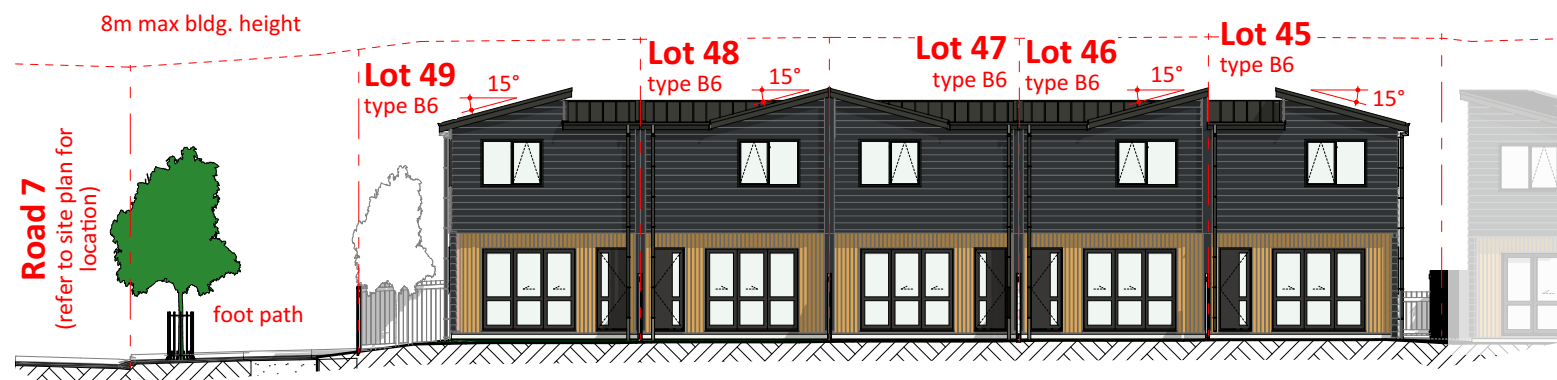
**Bevelback**  
Product: TBC  
Finish: TBC



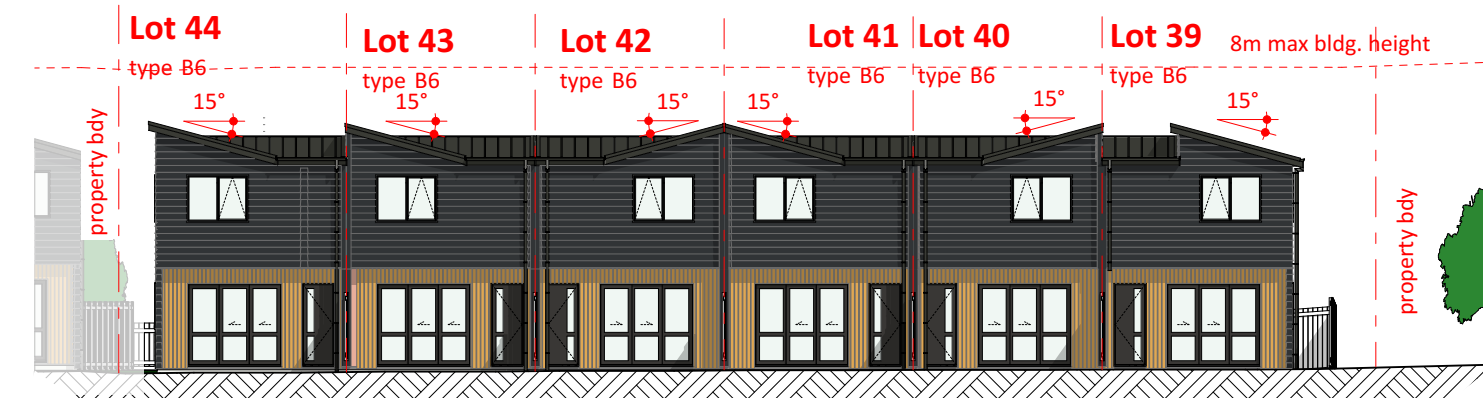
**Profiled Metal**  
Product: TBC  
Finish: TBC

**Brick Veneer**  
Product: TBC  
Finish: TBC





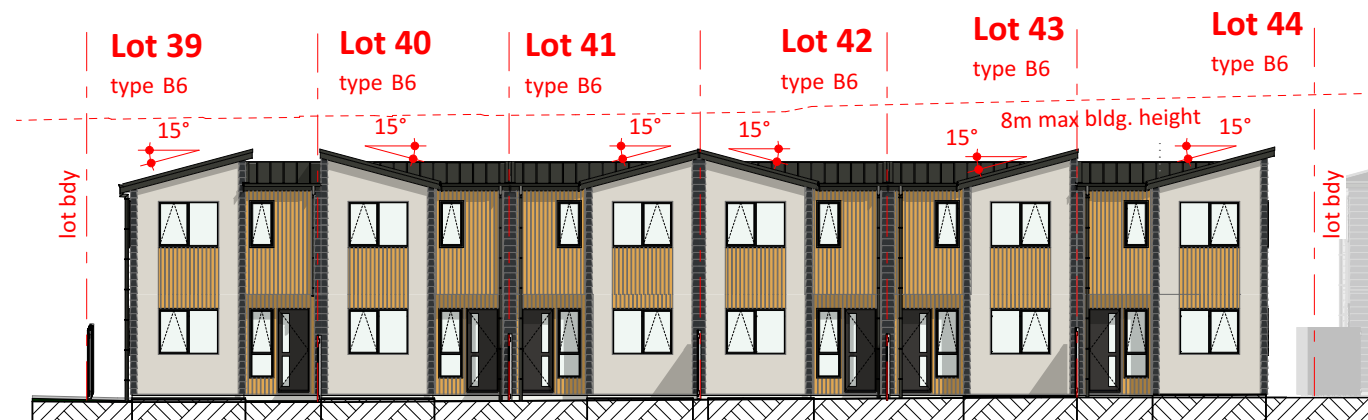
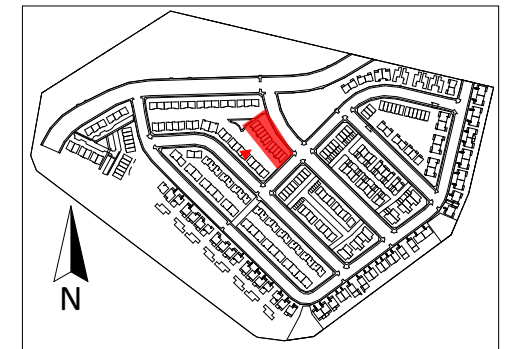
**1 Lot 49 - 45, North-East (Road 3) Elevation**  
RC102 Scale 1:200



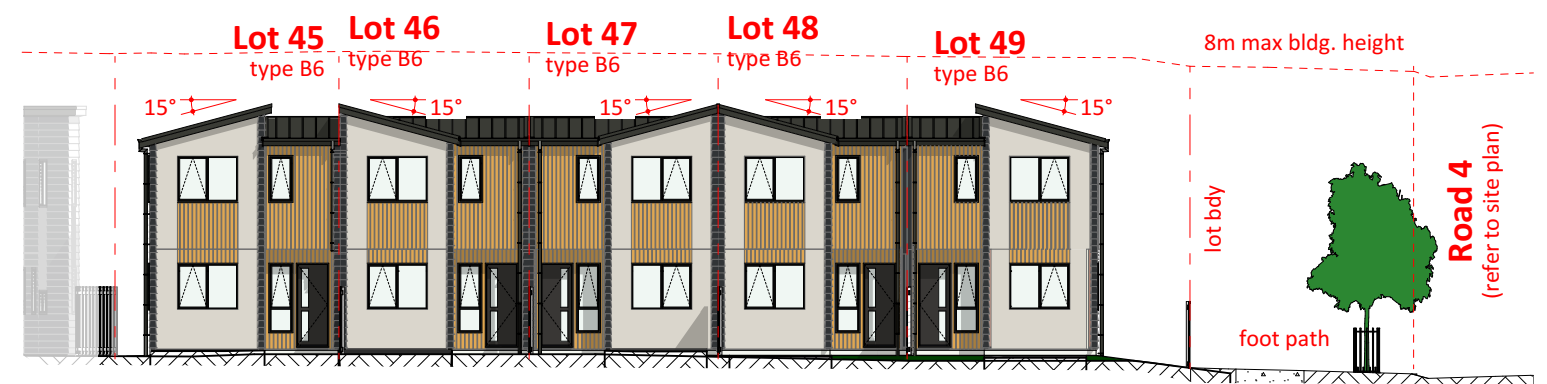
**2 Lot 44 - 39, North-East (Road 3) Elevation**  
RC102 Scale 1:200

## MATERIAL KEY

<b>A</b>	<b>Shiplap</b> Product: TBC Finish: TBC
<b>B</b>	<b>Bevelback</b> Product: TBC Finish: TBC
<b>C</b>	<b>Profiled Metal</b> Product: TBC Finish: TBC
<b>D</b>	<b>Light Weight Concrete</b> Product: TBC Finish: TBC



**3 Lot 39 - 44, South-West (COAL 2) Elevation**  
RC102 Scale 1:200



**4 Lot 45 - 49, South-West (COAL 2) Elevation**  
RC102 Scale 1:200