

Te Rere Hau: Aotaukere Extension Project – Project Description

Parcels which contain turbines:

- Section 27 Block II Mangahao SD
- Section 34 Block II Mangahao SD
- Section 25 Block II Mangahao SD
- Section 22 Block II Mangahao SD

Parcels which contain access routes (which may involve the removal of some existing TRH turbines):

- Section 3 Block II Mangahao SD
- Section 5 Block II Mangahao SD
- Section 7 Block II Mangahao SD
- Road Reserve (North Range Road)

Transmission Line Options

Preferred Option 1 – No Upgrade

- Section 3 Block II Mangahao SD (Collector Substation upgrade)
- Some internal cabling upgrades on parcels listed above

Preferred Option 1 – Upgraded

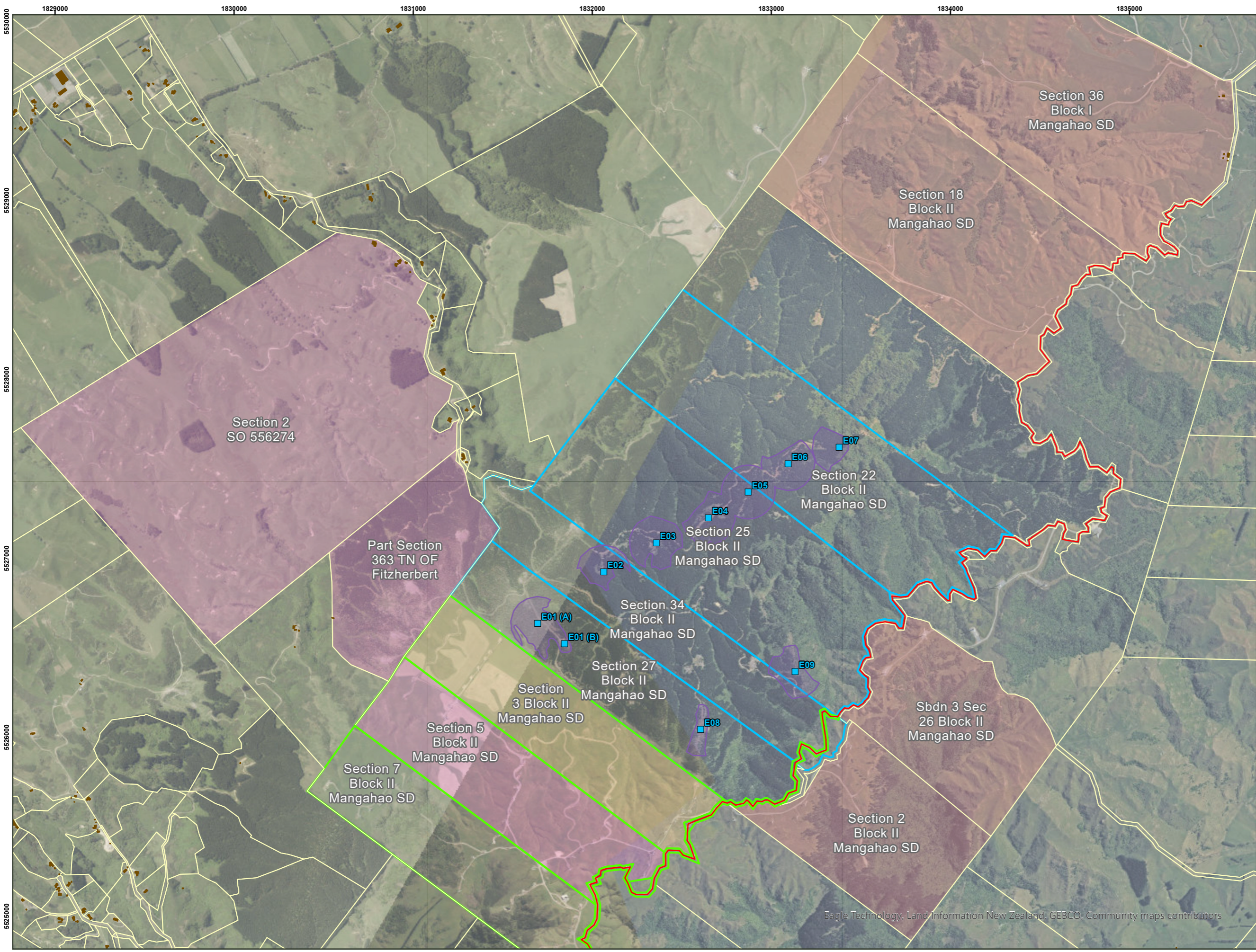
- Section 2 Block II Mangahao SD
- Subdivision 3 Sec 26 Block II Mangahao SD
- Section 36 Block I Mangahao SD
- Section 18 Block II Mangahao SD
- Some internal cabling upgrades on parcels listed above

Alternative Smaller Option 2 – No Upgrade

- Section 5 Block II Mangahao SD
- Part Section 363 Town Of Fitzherbert
- Section 2 SO 556274

Alternative Option 2 – Upgraded

- Section 5 Block II Mangahao SD
- Part Section 363 Town of Fitzherbert
- Section 2 SO 556274

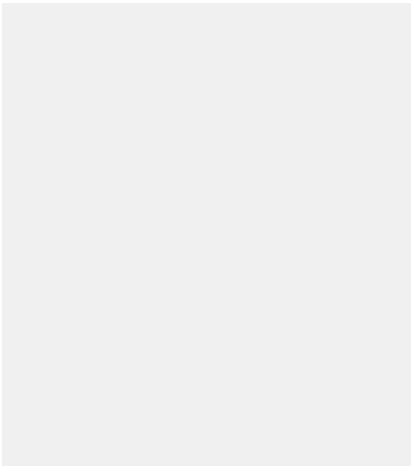


Legend

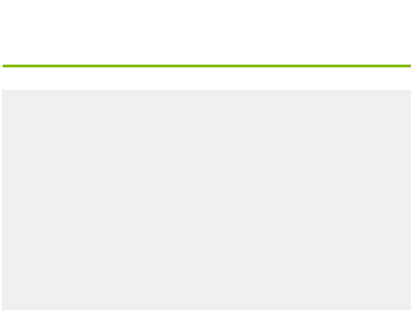
- Ernslaw - Proposed Turbine Layout
- Turbine Flexibility Zone
- North Range Road
- Turbine Parcels
- Access Route Parcels
- Primary Parcels
- Existing Building

Transmission Line Options

- Alternative Smaller Option 2 – No Upgrade
- Alternative Option 2 – Upgraded
- Preferred Option 1 – Upgraded
- Preferred Option 1 – No Upgrade (Collector Substation upgrade)



- Notes**
1. Data Sourced:
LDS: parcel boundaries (<https://data.linz.govt.nz/layer/50772-nz-primary-parcels/>)
LDS: elevation data (<https://data.linz.govt.nz/layer/104502-manawatu-whanganui-palmerston-north-lidar-1m-dem-2018/>)
 2. Aerial photo source via LINZ Data Service.
 3. Access route may involve the removal of some existing TRH turbines.
 4. Preferred Option 1 - Some internal cabling upgrades on parcels listed



A person using the Aurecon drawings and other data accepts the risk of using the drawings and other data:
1. In electronic form without requesting and checking them for accuracy against the original hard copy versions;
2. For any purposes not agreed to in writing by Aurecon.
Wherever a discrepancy in the contract documents is found and unless directed otherwise by the Principal/Engineer, the contractor shall adopt, at their own cost the greater quantum, class of finish, grade, or specification where applicable.

Date: 20/03/2023 Path: C:\Users\hamish.visser\Aurecon Group\IP520447 - Te Rere Hau Wind Farm Repowering - 5 Deliver Design\504 GIS\Ernslaw\ArcGIS Ernslaw\ArcGIS Ernslaw.aprx

FIGURE KK-0502: Location and Site Area