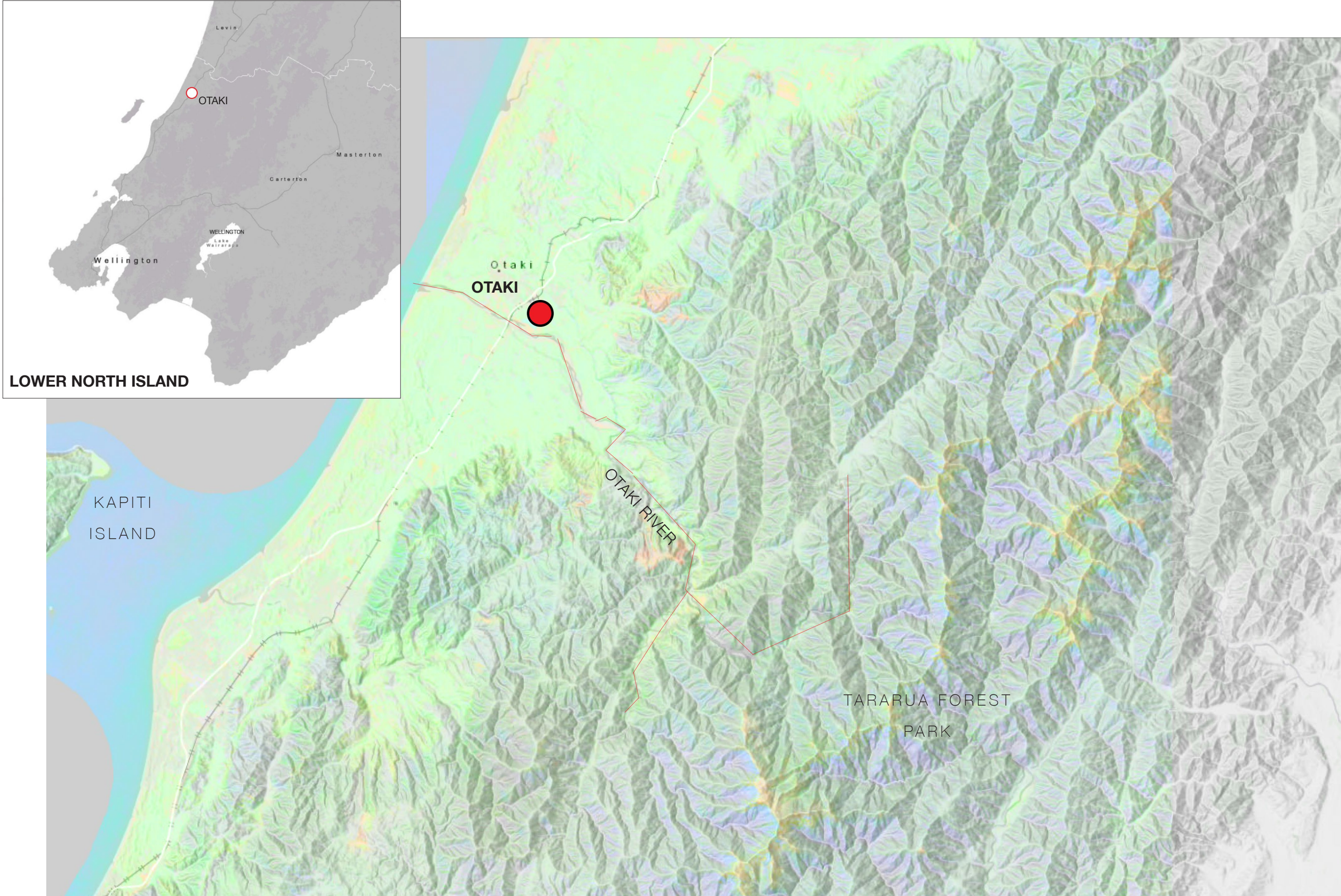




OTAKI MAORI RACECOURSE - CONCEPT DESIGN

25 OCTOBER 2022

LOCATION



CONTEXT MAP 1:150,000 SCALE



- Celebrating the Otaki Community
- Reinvigorate Iconic Racecourse & Industry

- Connection to Transport Links. State Highway 1
- 2.5km to Otaki Township



‘UNLOCK THE POTENTIAL’ RESPECT & HONOUR
TRADITIONS AND CULTURE.

1822

Ngati Toa, led by Te Rauparaha, migrated from Kawhia. From 1824, at the invitation of Ngati Toa, many members of Ngati Raukawa and Te Ati Awa moved south to Kapiti. By 1830 Otaki had become firmly established as a Ngati Raukawa stronghold. On the south side of the river was Otaki pa and the Katihiku settlement, and on the north was Rangiuuru pa, with Pakakutu further north again.

1880

The first state school was opened in Rangiuuru Road.

1885

Horowhenua County Council was established, covering an area from Tokomaru to Waikanae and including Otaki

1886

The Otaki-Maori Racing Club was established.

1989

Re-organisation of local government. Otaki Borough Council disappears and Otaki becomes part of Kapiti Coast District Council.

PROJECT OBJECTIVES

Otaki Racecourse is home to the Otaki Maori Racing Club and the track is used daily by up to 140 horses in training, largely because of its ideal location in the central lower North Island and excellent training facilities. It has enjoyed a long, colourful and successful history as a both a racing and training establishment.

The project proposes an opportunity to add another chapter to the legacy of the Otaki Racecourse & Maori Racing Club. The development seeks to provide quality affordable residential housing to Otaki while restoring the majesty of the race day venue.

Otaki Racing Village will provide a wide range of housing typologies, from standard 2-3 bedroom houses to Mixed tenure/ blind tenure affordable living.

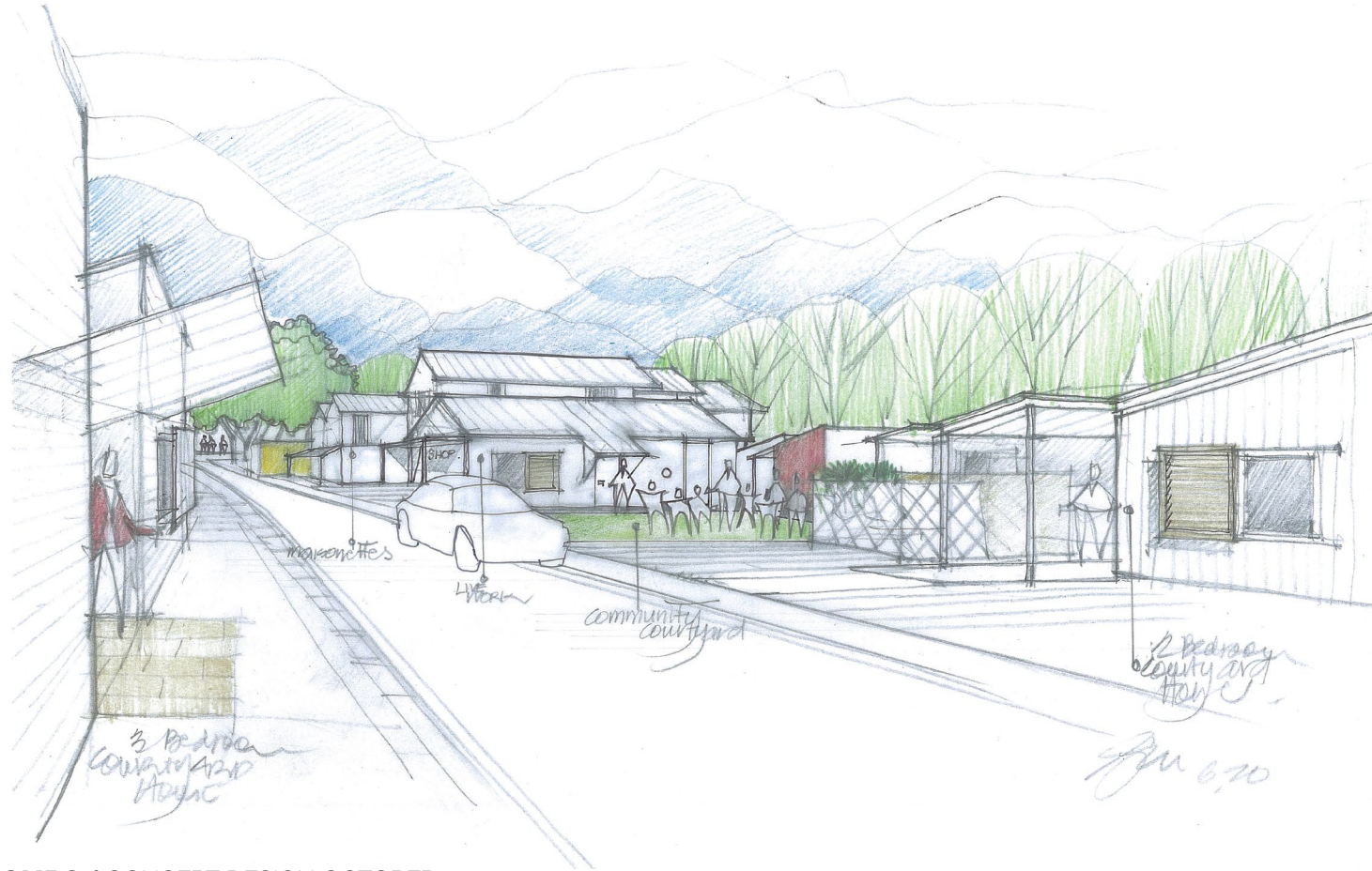
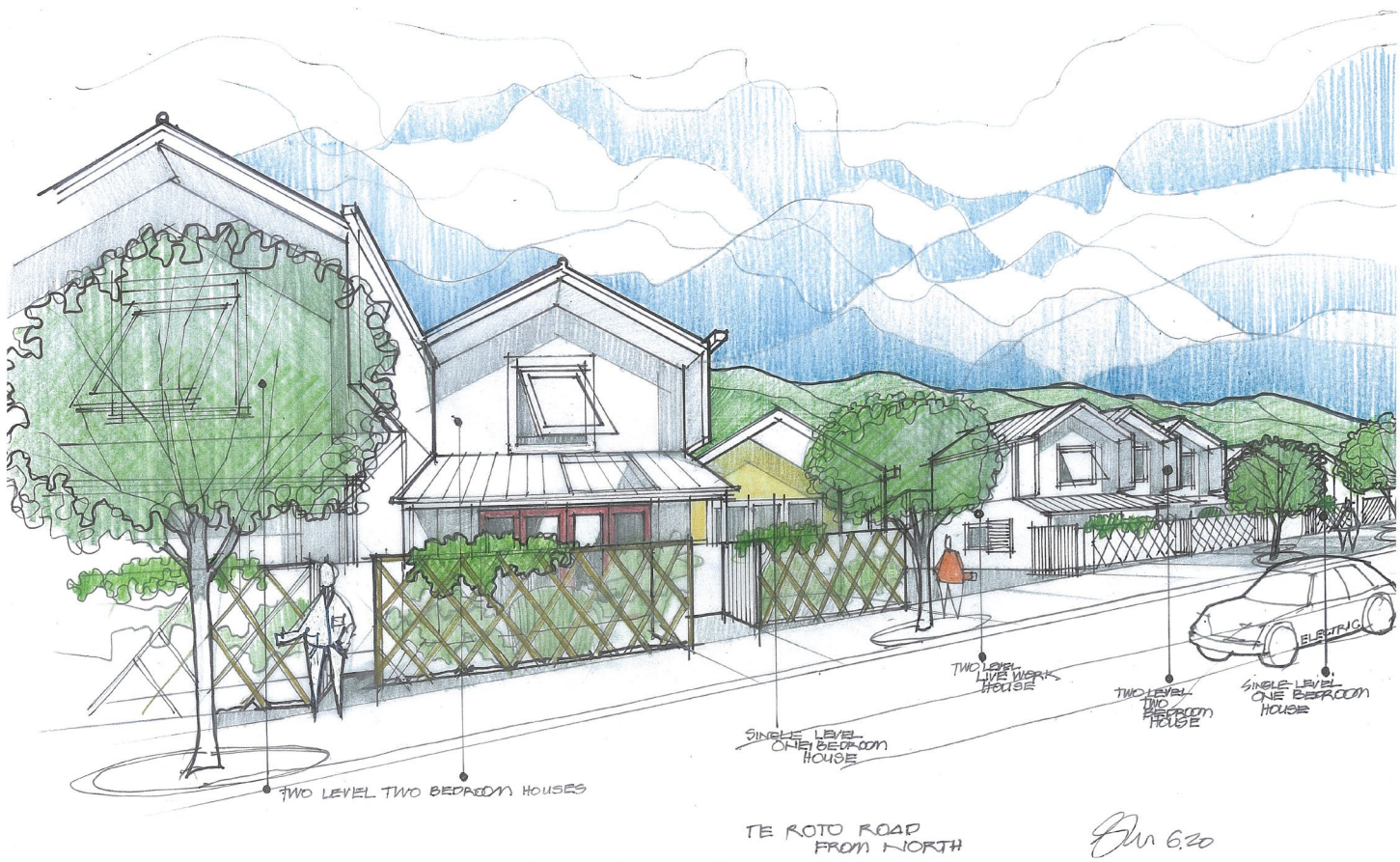
The existing racing facilities will be transformed to accommodate amenities for residents within the Racing Village, utilising Adaptive Use design principles.



SITE PHOTOS



HOUSING CONCEPT SKETCHES





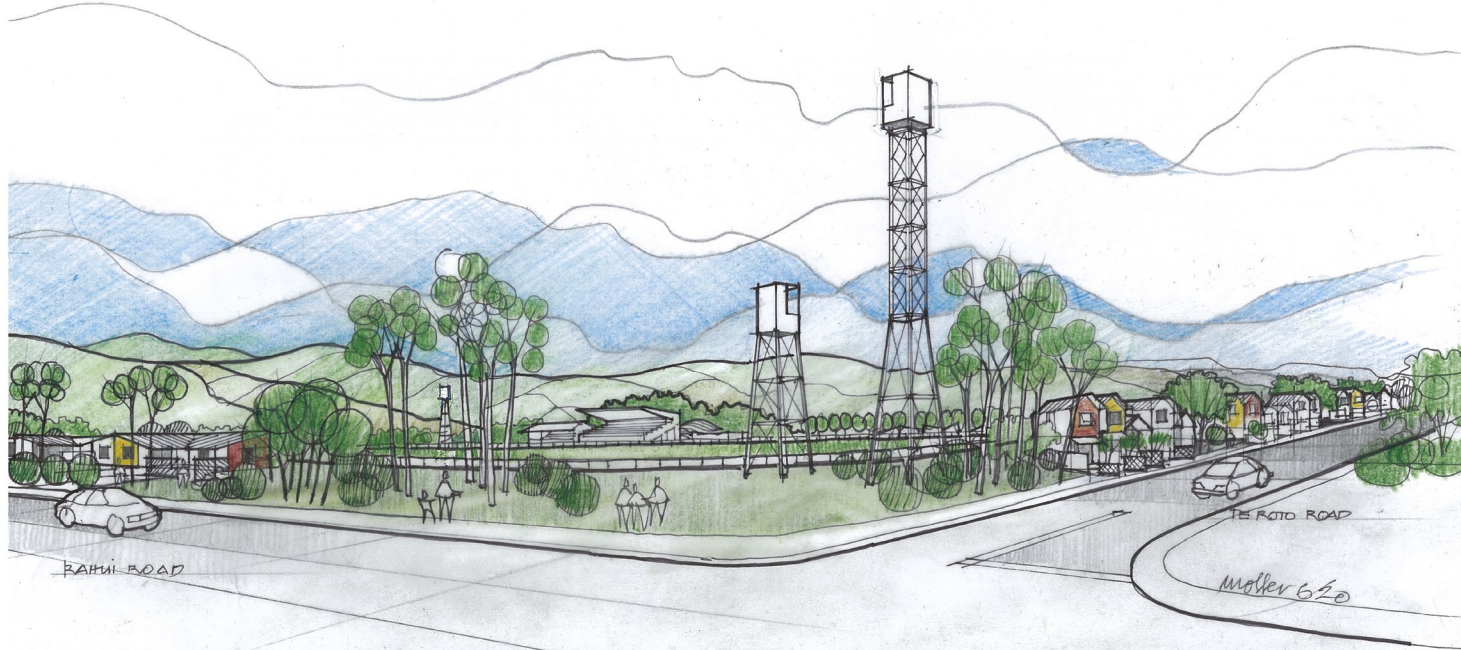
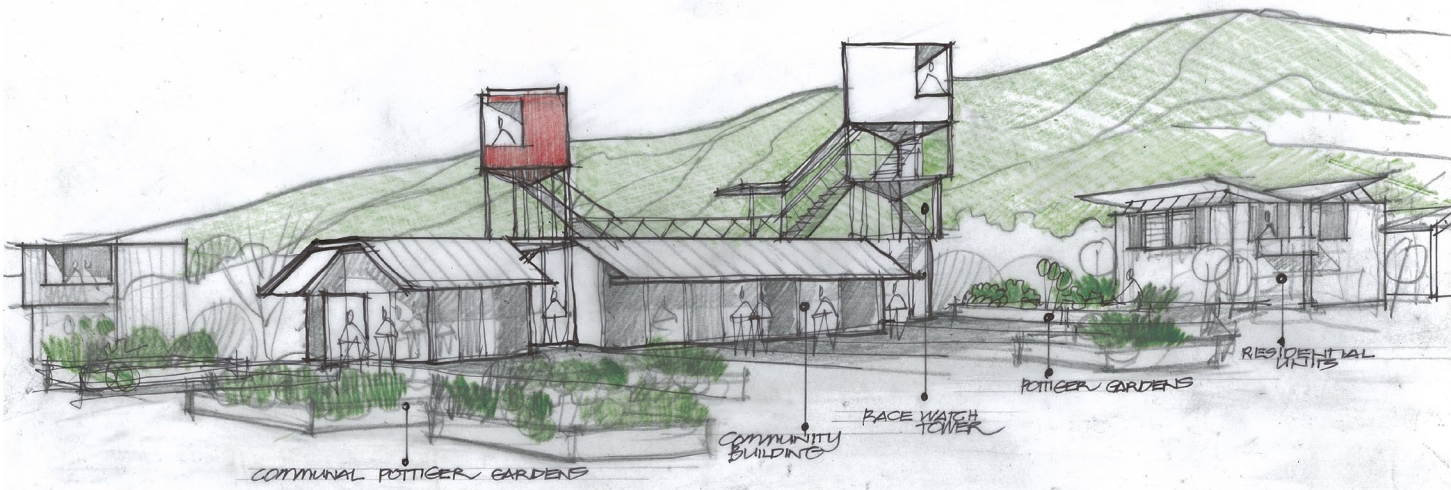
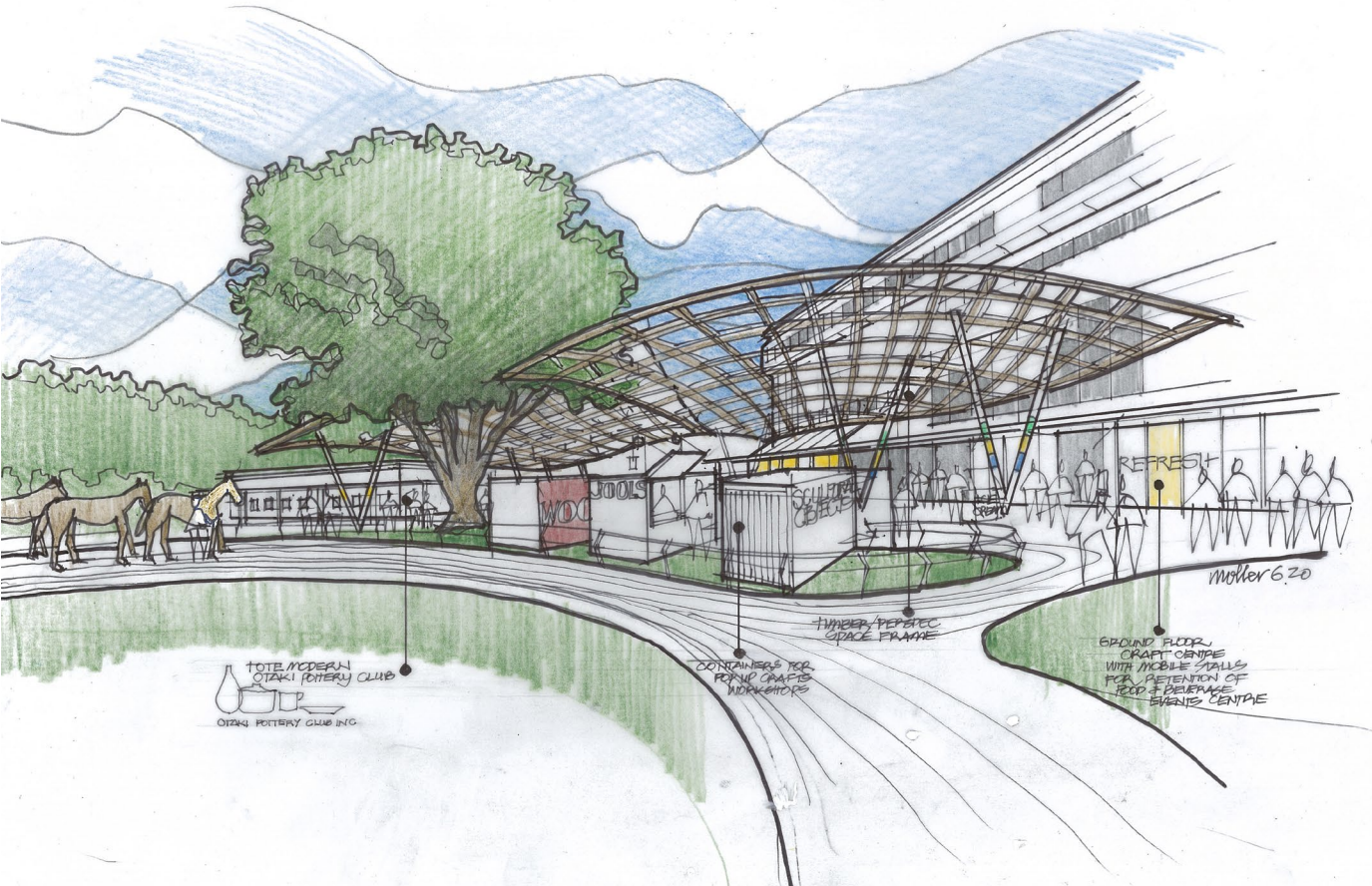
- Huatoki Plaza, New Plymouth
- Community Events - Arts & Craft Market
- Public Sculpture & Display



- Sculptural Element/ Attraction
- Food Market
- Canopy For Public Use



- Vanke Plaza, Zhengzhou
- Urbanplay with Design Elements
- Encourage Community Use & Engagement





Eagle Technology, Land Information New Zealand, GEBCO, Community maps contributors

SITE PLAN 1:4000 SCALE