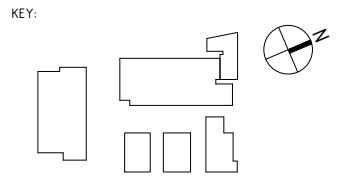


NOTES:



1 | GA Plan - Upper Ground
1 : 200



CLIENT Willis Bond & Co
STRUCTURAL ENGINEER Dunning Thornton Consultants
SERVICES ENGINEER Aurecon
FIRE ENGINEER Holmes Fire
PROJECT MANGEMENT RCP
ECI CONTRACTOR LT McGuinness

No.	Description	Date
A	Preliminary Design	29/10/2021

One Tasman Pukeahu 20-42
Park
Wellington

Ground Floor
1 : 200 @ A1 - Half Scale @A3
P1.0.01- A