



a t h f i e l d
 a r c h i t e c t s
 l i m i t e d
 a t h f i e l d
 a r c h i t e c t s
 l i m i t e d
 a t h f i e l d

105 AMRITSAR STREET
 WELLINGTON 6035
 PO BOX 3364
 WELLINGTON 6140
 NEW ZEALAND
 TEL 64 4 499 1727
 FAX 64 4 499 1960

MAIL@ATHFIELDARCHITECTS.CO.NZ
 WWW.ATHFIELDARCHITECTS.CO.NZ

NOTES:

KEY:



STRUCTURAL ENGINEER:
 Dunning Thornton Consultants

SERVICES ENGINEER:
 AURECON GROUP

FIRE ENGINEER:
 Holmes Fire

No.	Description	Date
01	Resource Consent	30.09.21



One Tasman Pukeahu Park 20-42
 1-23 Tasman Street

Location Plan

1 : 2000 @ A3

RC_0.01-



a t h f i e l d
 a r c h i t e c t s
 l i m i t e d
 a t h f i e l d
 a r c h i t e c t s
 l i m i t e d
 a t h f i e l d

105 AMRITSAR STREET
 WELLINGTON 6035
 PO BOX 3364
 WELLINGTON 6140
 NEW ZEALAND
 TEL 64 4 499 1727
 FAX 64 4 499 1960

MAIL@ATHFIELDARCHITECTS.CO.NZ
 WWW.ATHFIELDARCHITECTS.CO.NZ

NOTES:

▼ Apartment Entry

KEY:



STRUCTURAL ENGINEER:
 Dunning Thornton Consultants

SERVICES ENGINEER:
 AURECON GROUP

FIRE ENGINEER:
 Holmes Fire

No.	Description	Date
01	Resource Consent	30.09.21



One Tasman Pukeahu Park 20-42
 1-23 Tasman Street

Proposed Site Plan

As indicated

RC 1.00-

NOTES:

- Apartments
- Townhouses
- Cafe
- Apartment Amenities
- Circulation
- Lifts
- Stairwell
- Services
- Covered Parking

KEY:



STRUCTURAL ENGINEER:
Dunning Thornton Consultants

SERVICES ENGINEER:
AURECON GROUP

FIRE ENGINEER:
Holmes Fire

No.	Description	Date
01	Resource Consent	30.09.21



One Tasman Pukeahu Park 20-42
1-23 Tasman Street

GA Plan Level 01

1: 400 @ A3

RC_1.03-



NOTES:

KEY:

STRUCTURAL ENGINEER:
Dunning Thornton Consultants

SERVICES ENGINEER:
AURECON GROUP

FIRE ENGINEER:
Holmes Fire

No.	Description	Date
01	Resource Consent	30.09.21



One Tasman Pukeahu Park 20-42
1-23 Tasman Street

Proposed North Elevation

1: 400 @ A3

RC_2.00-



1 | RC North Elevation
1: 400 @ A3

A	Flush Glazed Aluminium Framed Shopfront Glazed pivot and sliding doors Large format operable door Integrated louvres for tenancy fresh air supply
B	Brick / Masonry
C	Metal Cladding Vertical format metal cassette panel Profiled metal sheet
D	Aluminium Window Suite Integrated spandrels, sliders, sashes and louvres

E	Expressed Spandrel Aluminium panel with white powdercoat finish, White extruded fibre reinforced panel (Fibre C (or Sim) Precast concrete spandrel, Modified cementitious plaster render system (Sto or Sim)
F	Glass Balustrade PC aluminium stanchions
G	Solid Balustrade Folded metal plate with powdercoat finish

H	Planter Stainless steel support wires for climbing plants
I	Concrete / Masonry Wall Paint finish
J	Exterior Sunshade / Louvre Metal profile with powdercoat finish
K	Terrace Balustrade Precast concrete panel with textured surface Sintered stone formatting panel Masonry

L	Spandrel Panel Sintered stone, Longer format porcelain panel Glazed terracotta.
M	Canopy Glazed pedestrian canopy with supporting structure.
N	Balcony Outrigger Support

NOTES:

KEY:

STRUCTURAL ENGINEER:
Dunning Thornton Consultants

SERVICES ENGINEER:
AURECON GROUP

FIRE ENGINEER:
Holmes Fire

No.	Description	Date
01	Resource Consent	30.09.21



One Tasman Pukeahu Park 20-42
1-23 Tasman Street

Proposed East Elevation

1: 400 @ A3

RC_2.01-



A	Flush Glazed Aluminium Framed Shopfront Glazed pivot and sliding doors Large format operable door Integrated louvres for tenancy fresh air supply
B	Brick / Masonry
C	Metal Cladding Vertical format metal cassette panel Profiled metal sheet
D	Aluminium Window Suite Integrated spandrels, sliders, sashes and louvres

E	Expressed Spandrel Aluminium panel with white powdercoat finish, White extruded fibre reinforced panel (Fibre C (or Sim) Precast concrete spandrel, Modified cementitious plaster render system (Sto or Sim)
F	Glass Balustrade PC aluminium stanchions
G	Solid Balustrade Folded metal plate with powdercoat finish

H	Planter Stainless steel support wires for climbing plants
I	Concrete / Masonry Wall Paint finish
J	Exterior Sunshade / Louvre Metal profile with powdercoat finish
K	Terrace Balustrade Precast concrete panel with textured surface Sintered stone formatting panel Masonry

L	Spandrel Panel Sintered stone, Longer format porcelain panel Glazed terracotta.
M	Canopy Glazed pedestrian canopy with supporting structure.
N	Balcony Outrigger Support

NOTES:

KEY:

STRUCTURAL ENGINEER:
Dunning Thornton Consultants

SERVICES ENGINEER:
AURECON GROUP

FIRE ENGINEER:
Holmes Fire

No.	Description	Date
01	Resource Consent	30.09.21



One Tasman Pukeahu Park 20-42
1-23 Tasman Street

Proposed South Elevation

1: 400 @ A3

RC_2.02-



1 | RC South Elevation
1: 400 @ A3

A	Flush Glazed Aluminium Framed Shopfront Glazed pivot and sliding doors Large format operable door Integrated louvres for tenancy fresh air supply
B	Brick / Masonry
C	Metal Cladding Vertical format metal cassette panel Profiled metal sheet
D	Aluminium Window Suite Integrated spandrels, sliders, sashes and louvres

E	Expressed Spandrel Aluminium panel with white powdercoat finish, White extruded fibre reinforced panel (Fibre C (or Sim) Precast concrete spandrel, Modified cementitious plaster render system (Sto or Sim)
F	Glass Balustrade PC aluminium stanchions
G	Solid Balustrade Folded metal plate with powdercoat finish

H	Planter Stainless steel support wires for climbing plants
I	Concrete / Masonry Wall Paint finish
J	Exterior Sunshade / Louvre Metal profile with powdercoat finish
K	Terrace Balustrade Precast concrete panel with textured surface Sintered stone formatting panel Masonry

L	Spandrel Panel Sintered stone, Longer format porcelain panel Glazed terracotta.
M	Canopy Glazed pedestrian canopy with supporting structure.
N	Balcony Outrigger Support

NOTES:

KEY:

STRUCTURAL ENGINEER:
Dunning Thornton Consultants

SERVICES ENGINEER:
AURECON GROUP

FIRE ENGINEER:
Holmes Fire

No.	Description	Date
01	Resource Consent	30.09.21



1 RC West Elevation
1:200

A	Flush Glazed Aluminium Framed Shopfront Glazed pivot and sliding doors Large format operable door Integrated louvres for tenancy fresh air supply
B	Brick / Masonry
C	Metal Cladding Vertical format metal cassette panel Profiled metal sheet
D	Aluminium Window Suite Integrated spandrels, sliders, sashes and louvres

E	Expressed Spandrel Aluminium panel with white powdercoat finish, White extruded fibre reinforced panel (Fibre C (or Sim) Precast concrete spandrel, Modified cementitious plaster render system (Sto or Sim)
F	Glass Balustrade PC aluminium stanchions
G	Solid Balustrade Folded metal plate with powdercoat finish

H	Planter Stainless steel support wires for climbing plants
I	Concrete / Masonry Wall Paint finish
J	Exterior Sunshade / Louvre Metal profile with powdercoat finish
K	Terrace Balustrade Precast concrete panel with textured surface Sintered stone formatting panel Masonry

L	Spandrel Panel Sintered stone, Longer format porcelain panel Glazed terracotta.
M	Canopy Glazed pedestrian canopy with supporting structure.
N	Balcony Outrigger Support



One Tasman Pukeahu Park 20-42
1-23 Tasman Street

Proposed West Elevation

1:200

RC_2.03-

NOTES:

- Apartments
- Townhouses
- Cafe
- Apartment Amenities
- Circulation
- Lifts
- Stairwell
- Services
- Covered Parking

KEY:

STRUCTURAL ENGINEER:
Dunning Thornton Consultants

SERVICES ENGINEER:
AURECON GROUP

FIRE ENGINEER:
Holmes Fire

No.	Description	Date
01	Resource Consent	30.09.21

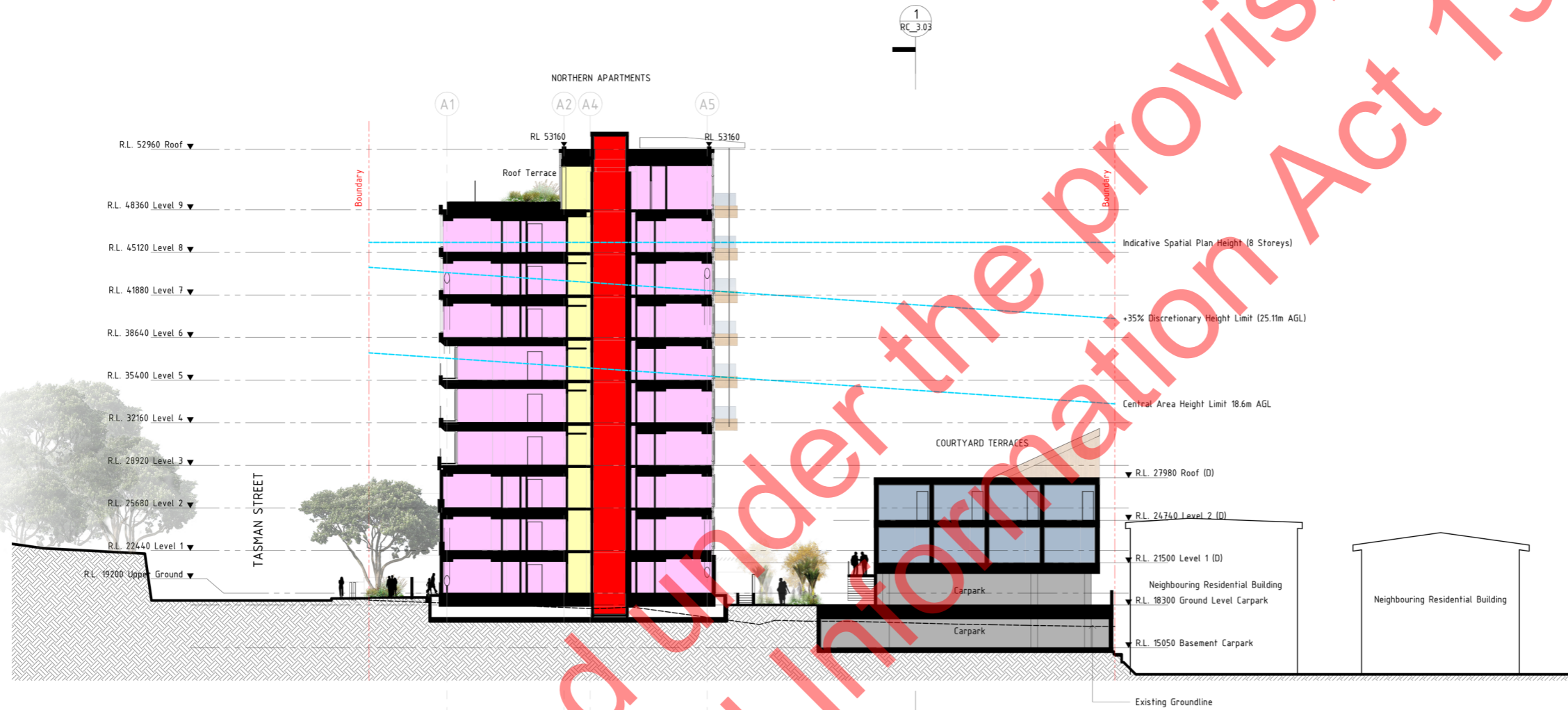


One Tasman Pukeahu Park 20-42
1-23 Tasman Street

Proposed Section

1: 400 @ A3

RC_3.00-



Released under the Provision of the Official Information Act 1982

NOTES:

- Apartments
- Townhouses
- Cafe
- Apartment Amenities
- Circulation
- Lifts
- Stairwell
- Services
- Covered Parking

KEY:

STRUCTURAL ENGINEER:
Dunning Thornton Consultants

SERVICES ENGINEER:
AURECON GROUP

FIRE ENGINEER:
Holmes Fire

No.	Description	Date
01	Resource Consent	30.09.21

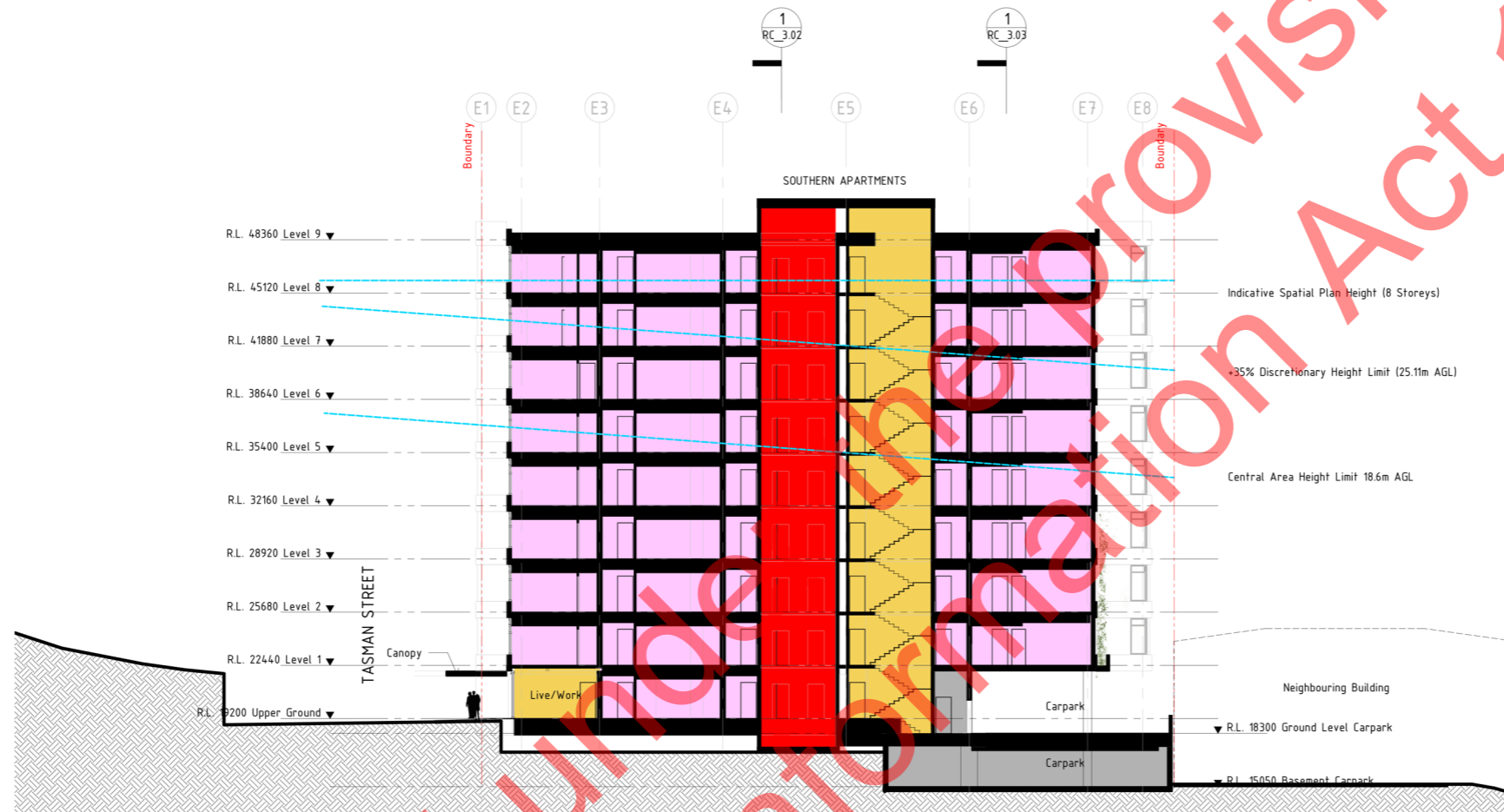


One Tasman Pukeahu Park 20-42
1-23 Tasman Street

Proposed Section

1: 400 @ A3

RC_3.01-



1 | RC Section - South Apartments
1: 400 @ A3

Released under the Official Information Act 1982

NOTES:

- Apartments
- Townhouses
- Cafe
- Apartment Amenities
- Circulation
- Lifts
- Stairwell
- Services
- Covered Parking

KEY:

STRUCTURAL ENGINEER:
Dunning Thornton Consultants

SERVICES ENGINEER:
AURECON GROUP

FIRE ENGINEER:
Holmes Fire

No.	Description	Date
01	Resource Consent	30.09.21

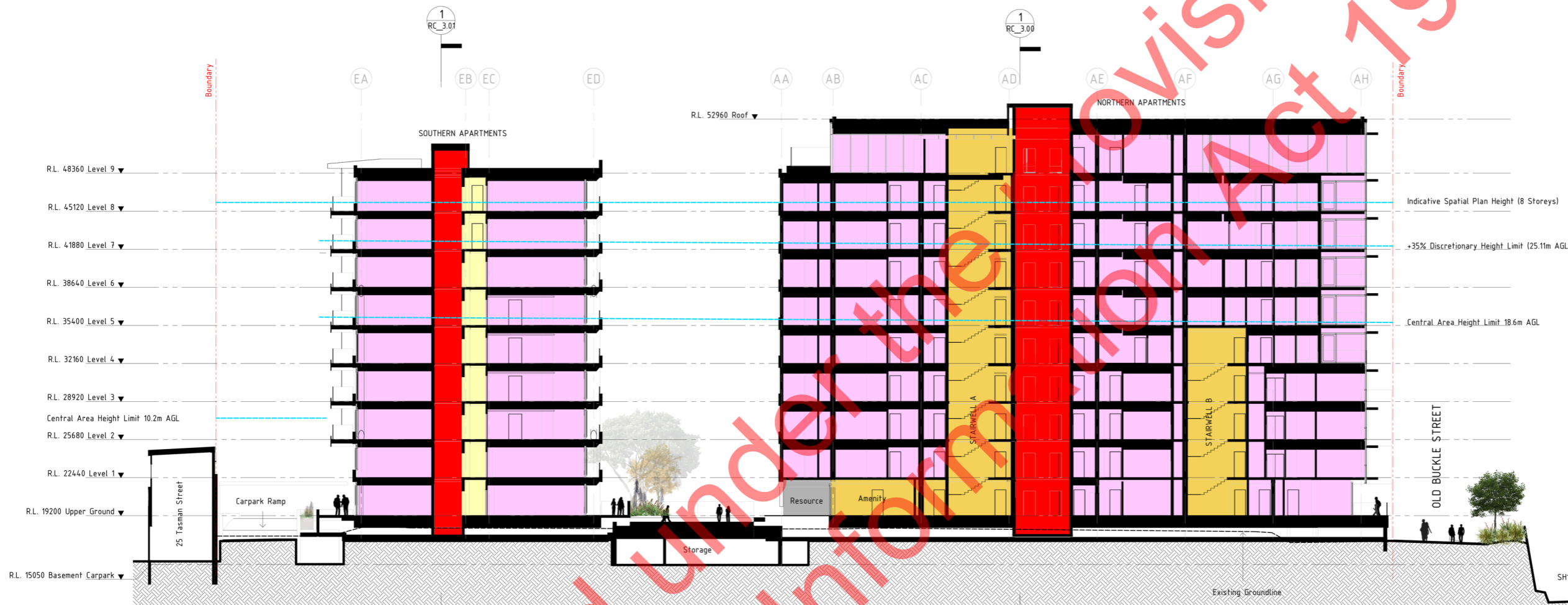


One Tasman Pukeahu Park 20-42
1-23 Tasman Street

Proposed Section

1: 400 @ A3

RC_3.02-



1 | RC Section - Longitudinal Section A
1: 400 @ A3

NOTES:

- Apartments
- Townhouses
- Cafe
- Apartment Amenities
- Circulation
- Lifts
- Stairwell
- Services
- Covered Parking

KEY:

STRUCTURAL ENGINEER:
Dunning Thornton Consultants

SERVICES ENGINEER:
AURECON GROUP

FIRE ENGINEER:
Holmes Fire

No.	Description	Date
01	Resource Consent	30.09.21



One Tasman Pukeahu Park 20-42
1-23 Tasman Street

Proposed Section

1 : 400 @ A3

RC_3.03-



1 | RC Section - Longitudinal Section B
1 : 400 @ A3