

ATTACHMENT 4
NORTHBROOK WANAKA
RETIREMENT VILLAGE SITE
LAYOUT AND BULK AND
LOCATION PLANS





Northbrook
Wanaka

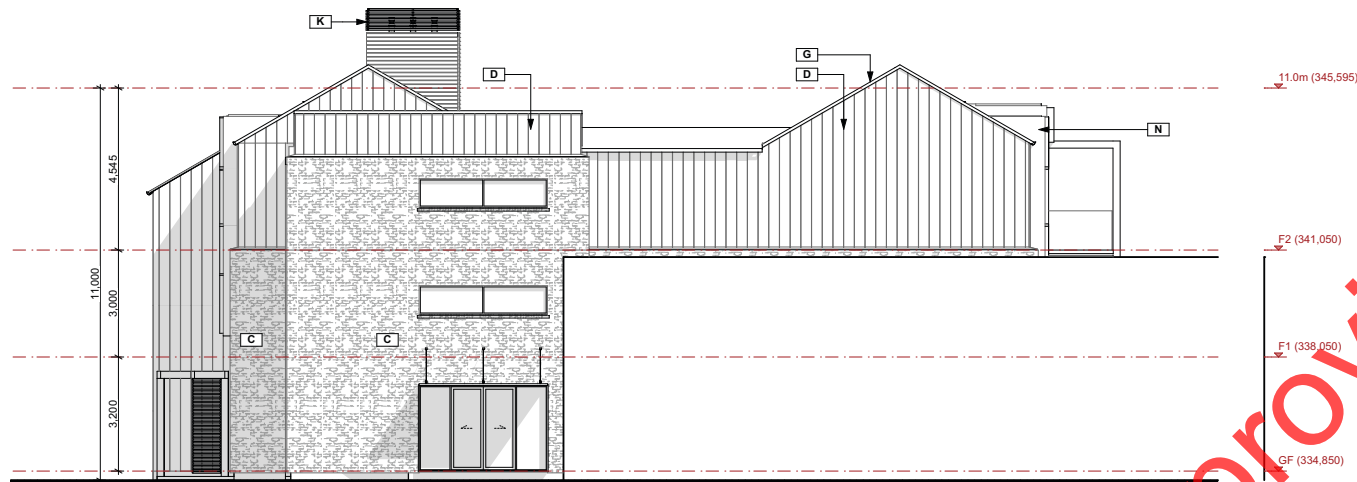




Northbrook Northlake Site Location







Elevation 01
Scale 1:150



Elevation 02
Scale 1:150

KEY
 - - - 11m above original Ground Level
 — Proposed Ground Level
 - - - Existing Ground Level
 NOTE: Above cut lines taken from face of building unless noted otherwise
 The height limits detailed in these elevations are based upon information available to date. Final detailed building design may result in height variations of +/- 300mm
 Refer to PPG mesh for RLS to building slabs



- A - Cedar battens
- B - Board & batten
- C - Brick veneer
- D - Vertical long run metal cladding
- E - Weatherboards
- F - Plaster
- G - Standing seam metal tray roofing
- H - Corrugate roofing
- I - Metal entry cover
- J - Timber pergola
- K - Timber screening
- L - Metal louvres
- M - Metal panel flashing
- N - Prefinished fibre-cement panel



East Perspective



South East View



Elevation 03
Scale 1:150



Elevation 04
Scale 1:150

KEY

- - - 11m above original Ground Level
- Proposed Ground Level
- Existing Ground Level

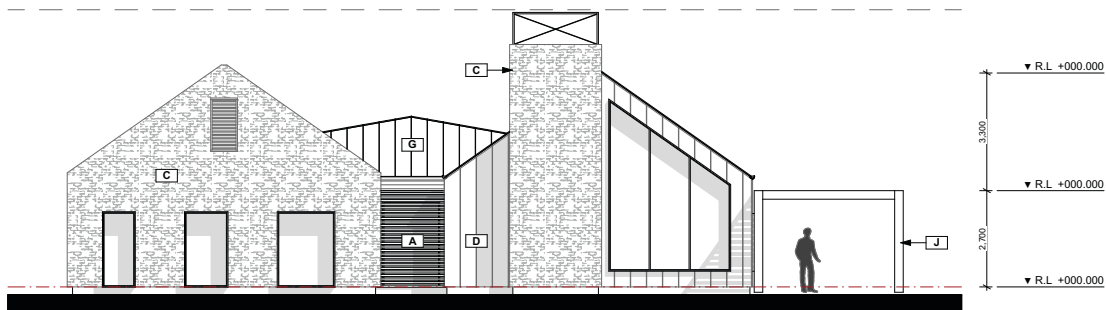
NOTE: Above cut lines taken from face of building unless noted otherwise

The height limits detailed in these elevations are based upon information available to date. Final detailed building design may result in height variations of +/- 300mm

Refer to PPG mesh for RLS to building slabs

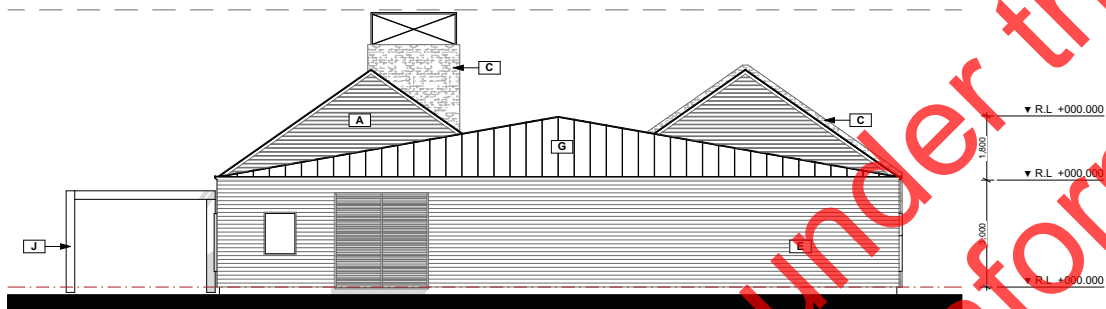


A - Cedar battens
B - Board & batten
C - Brick veneer
D - Vertical long run metal cladding
E - Weatherboards
F - Plaster
G - Standing seam metal tray roofing
H - Corrugate roofing
I - Metal entry cover
J - Timber pergola
K - Timber screening
L - Metal louvers
M - Metal panel flashing
N - Prefinished fibre-cement panel



Elevation 01

Scale 1:150



Elevation 02

Scale 1:150

KEY

- - - 8m above original Ground Level
- Proposed Ground Level
- - - Existing Ground Level

NOTE: Above cut lines taken from face of building unless noted otherwise

The height limits detailed in these elevations are based upon information available to date. Final detailed building design may result in height variations of +/- 300mm

Refer to PPG mesh for RLS to building slabs



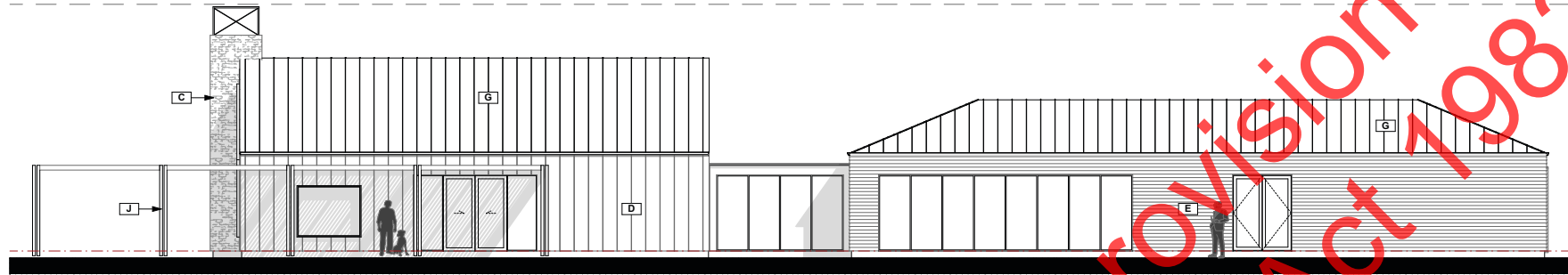
- A - Cedar battens
- B - Board & batten
- C - Brick veneer
- D - Vertical long run metal cladding
- E - Weatherboards
- F - Plaster
- G - Standing seam metal tray roofing
- H - Corrugate roofing
- I - Metal entry cover
- J - Timber pergola
- K - Timber screening
- L - Metal louvres
- M - Metal panel flashing
- N - Prefinished fibre-cement panel



Main Building Perspective 01



Main Building Perspective 02



Elevation 03
Scale 1:150



Elevation 04
Scale 1:150

KEY

--- 8m above original Ground Level
— Proposed Ground Level
--- Existing Ground Level

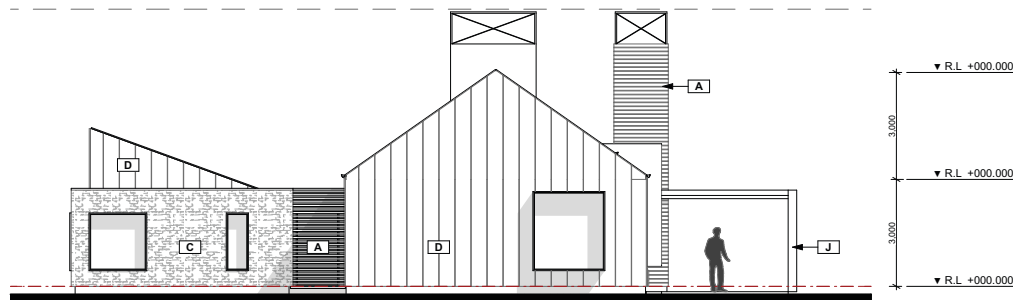
NOTE: Above cut lines taken from face of building unless noted otherwise

The height limits detailed in these elevations are based upon information available to date. Final detailed building design may result in height variations of +/- 300mm

Refer to PPG mesh for RLS to building slabs



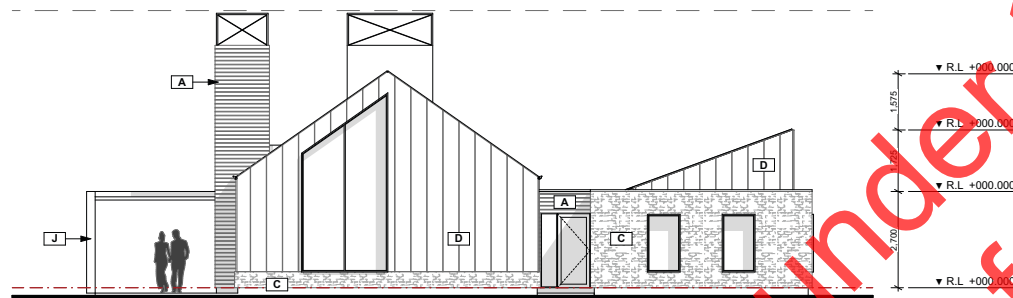
- A - Cedar battens
- B - Board & batten
- C - Brick veneer
- D - Vertical long run metal cladding
- E - Weatherboards
- F - Plaster
- G - Standing seam metal tray roofing
- H - Corrugate roofing
- I - Metal entry cover
- J - Timber pergola
- K - Timber screening
- L - Metal louvres
- M - Metal panel flashing
- N - Prefinished fibre-cement panel



Elevation 01
Scale 1:150



Clubhouse Perspective 01



Elevation 02
Scale 1:150

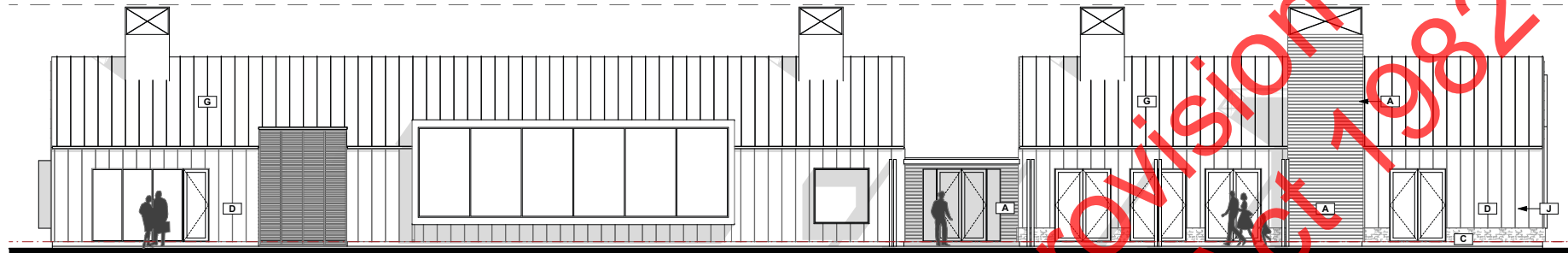


Clubhouse Perspective 02

KEY
 - - - 8m above original Ground Level
 — Proposed Ground Level
 - - - Existing Ground Level
NOTE: Above cut lines taken from face of building unless noted otherwise
 The height limits detailed in these elevations are based upon information available to date. Final detailed building design may result in height variations of +/- 300mm
 Refer to PPG mesh for RLS to building slabs



- A - Cedar battens
- B - Board & batten
- C - Brick veneer
- D - Vertical long run metal cladding
- E - Weatherboards
- F - Plaster
- G - Standing seam metal tray roofing
- H - Corrugate roofing
- I - Metal entry cover
- J - Timber pergola
- K - Timber screening
- L - Metal louvres
- M - Metal panel flashing
- N - Prefinished fibre-cement panel



Elevation 03

Scale 1:150



Elevation 04

Scale 1:150

KEY

- 8m above original Ground Level
- Proposed Ground Level
- - - Existing Ground Level

NOTE: Above cut lines taken from face of building unless noted otherwise

The height limits detailed in these elevations are based upon information available to date. Final detailed building design may result in height variations of +/- 300mm

Refer to PPG mesh for RLS to building slabs



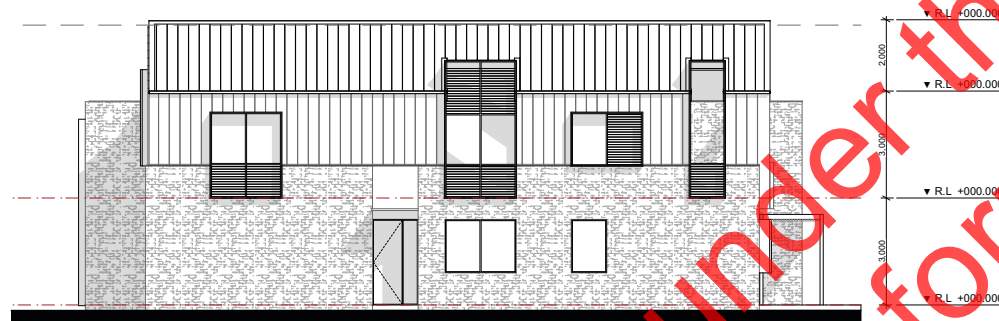
- A - Cedar battens
- B - Board & batten
- C - Brick veneer
- D - Vertical long run metal cladding
- E - Weatherboards
- F - Plaster
- G - Standing seam metal tray roofing
- H - Corrugate roofing
- I - Metal entry cover
- J - Timber pergola
- K - Timber screening
- L - Metal louvers
- M - Metal panel flashing
- N - Prefinished fibre-cement panel



Elevation 01
Scale 1:150



Type A Units Perspective 01



Elevation 02
Scale 1:150

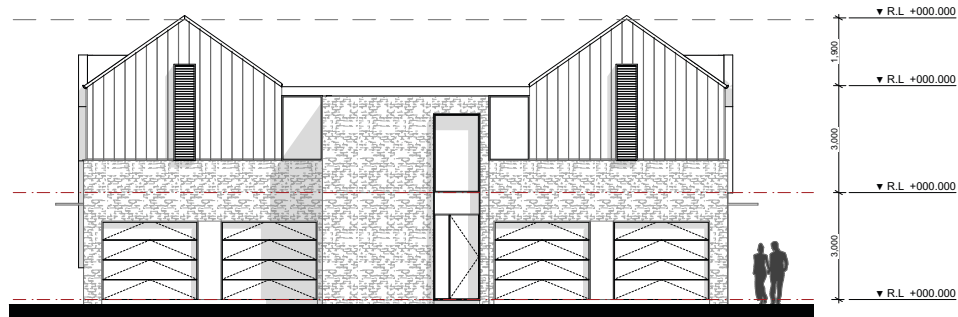


Type A Units Perspective 02

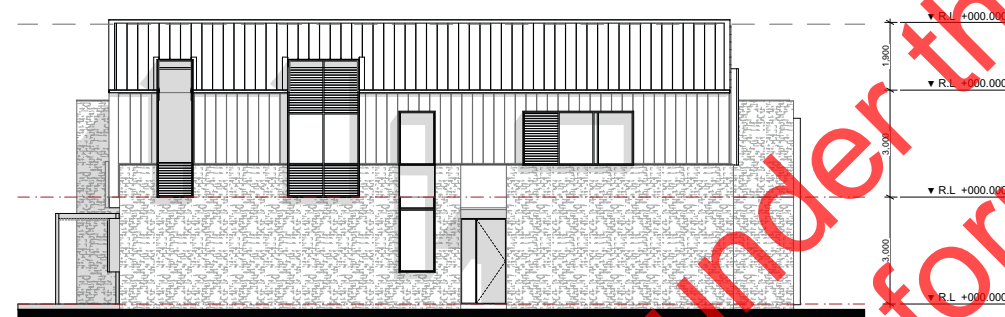
KEY
- - - 8m above original Ground Level
— Proposed Ground Level
— Existing Ground Level
NOTE: Above cut lines taken from face of building unless noted otherwise
The height limits detailed in these elevations are based upon information available to date. Final detailed building design may result in height variations of +/- 300mm
Refer to PPG mesh for RLS to building slabs



- A - Cedar battens
- B - Board & batten
- C - Brick veneer
- D - Vertical long run metal cladding
- E - Weatherboards
- F - Plaster
- G - Standing seam metal tray roofing
- H - Corrugate roofing
- I - Metal entry cover
- J - Timber pergola
- K - Timber screening
- L - Metal louvres
- M - Metal panel flashing
- N - Prefinished fibre-cement panel



Elevation 03
Scale 1:150

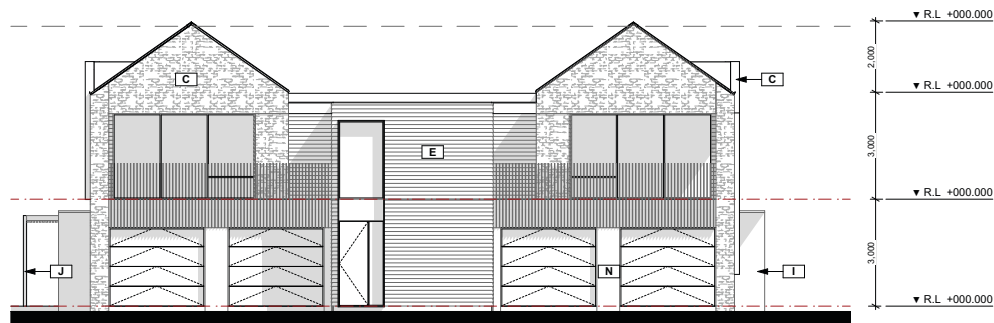


Elevation 04
Scale 1:150

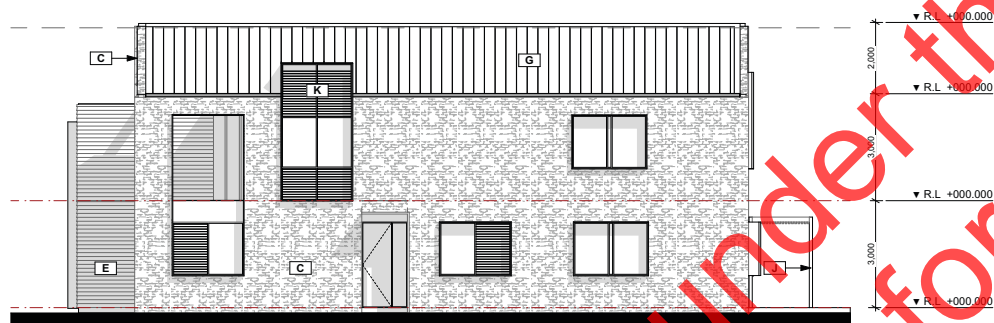
KEY
 - - - 8m above original Ground Level
 — Proposed Ground Level
 - - - Existing Ground Level
 NOTE: Above cut lines taken from face of building unless noted otherwise
 The height limits detailed in these elevations are based upon information available to date. Final detailed building design may result in height variations of +/- 300mm
 Refer to PPG mesh for RLS to building slabs



- A - Cedar battens
- B - Board & batten
- C - Brick veneer
- D - Vertical long run metal cladding
- E - Weatherboards
- F - Plaster
- G - Standing seam metal tray roofing
- H - Corrugate roofing
- I - Metal entry cover
- J - Timber pergola
- K - Timber screening
- L - Metal louvres
- M - Metal panel flashing
- N - Prefinished fibre-cement panel



Elevation 03
Scale 1:150



Elevation 04
Scale 1:150

KEY
 - - - 8m above original Ground Level
 — Proposed Ground Level
 - - - Existing Ground Level
NOTE: Above cut lines taken from face of building unless noted otherwise
 The height limits detailed in these elevations are based upon information available to date. Final detailed building design may result in height variations of +/- 300mm
 Refer to PPG mesh for RLS to building slabs



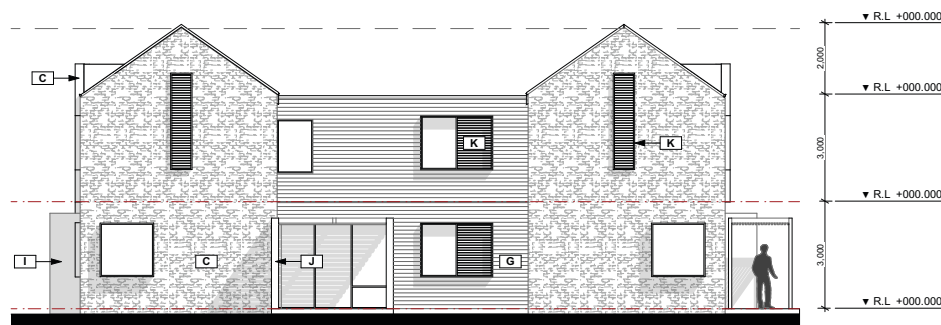
- A - Cedar battens
- B - Board & batten
- C - Brick veneer
- D - Vertical long run metal cladding
- E - Weatherboards
- F - Plaster
- G - Standing seam metal tray roofing
- H - Corrugate roofing
- I - Metal entry cover
- J - Timber pergola
- K - Timber screening
- L - Metal louvres
- M - Metal panel flashing
- N - Prefinished fibre-cement panel



Type B Unit Perspective 02



Type B Unit Perspective 01



Elevation 01
Scale 1:150

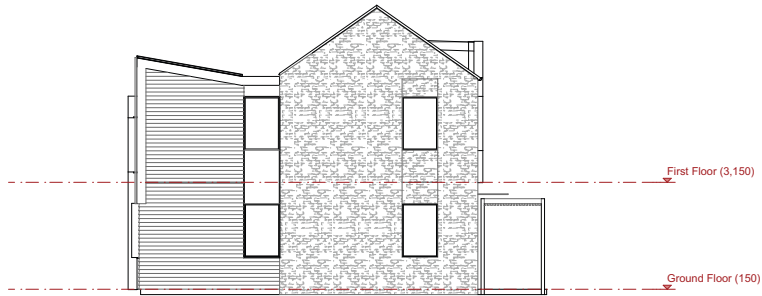


Elevation 02
Scale 1:150

KEY	
	8m above original Ground Level
	Proposed Ground Level
	Existing Ground Level
NOTE: Above cut lines taken from face of building unless noted otherwise	
The height limits detailed in these elevations are based upon information available to date. Final detailed building design may result in height variations of +/- 300mm	
Refer to PPG mesh for RLS to building slabs	



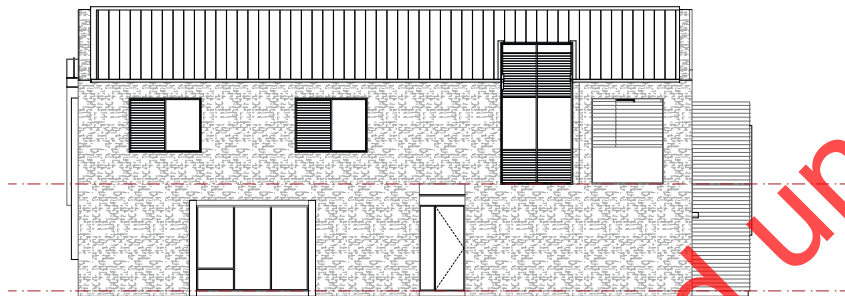
- A - Cedar battens
- B - Board & batten
- C - Brick veneer
- D - Vertical long run metal cladding
- E - Weatherboards
- F - Plaster
- G - Standing seam metal tray roofing
- H - Corrugate roofing
- I - Metal entry cover
- J - Timber pergola
- K - Timber screening
- L - Metal louvres
- M - Metal panel flashing
- N - Prefinished fibre-cement panel



E01 Elevation
- | Scale 1:150



Generic Perspective Image 1



E02 Elevation
- | Scale 1:150



Generic Perspective Image 2

KEY

--- 8m above original Ground Level

— Proposed Ground Level

--- Existing Ground Level

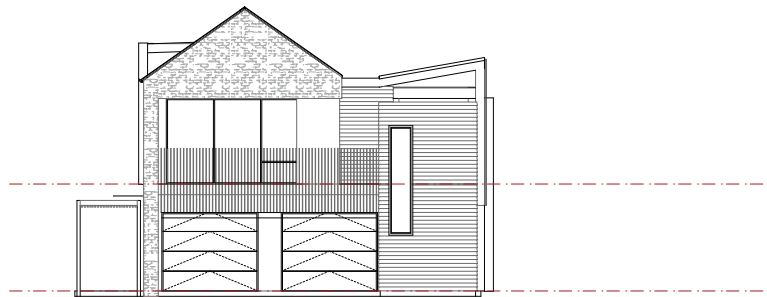
NOTE: Above cut lines taken from face of building unless noted otherwise

The height limits detailed in these elevations are based upon information available to date. Final detailed building design may result in height variations of +/- 300mm

Refer to PPG mesh for RLS to building slabs

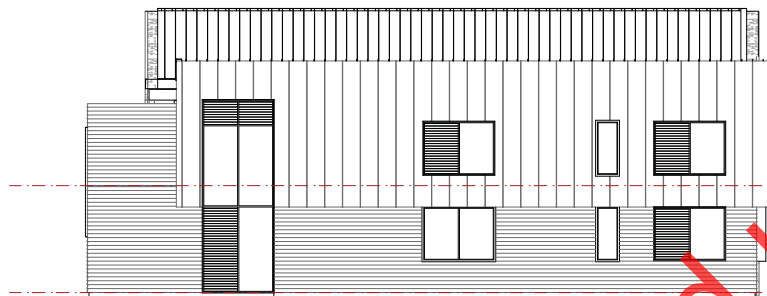


- A - Cedar battens
- B - Board & batten
- C - Brick veneer
- D - Vertical long run metal cladding
- E - Weatherboards
- F - Plaster
- G - Standing seam metal tray roofing
- H - Corrugate roofing
- I - Metal entry cover
- J - Timber pergola
- K - Timber screening
- L - Metal louvres
- M - Metal panel flashing
- N - Prefinished fibre-cement panel



E03 Elevation

- | Scale 1:150



E04 Elevation

- | Scale 1:150

KEY

--- 8m above original Ground Level

— Proposed Ground Level

--- Existing Ground Level

NOTE: Above cut lines taken from face of building unless noted otherwise

The height limits detailed in these elevations are based upon information available to date. Final detailed building design may result in height variations of +/- 300mm

Refer to PPG mesh for RLS to building slabs



- A - Cedar battens
- B - Board & batten
- C - Brick veneer
- D - Vertical long run metal cladding
- E - Weatherboards
- F - Plaster
- G - Standing seam metal tray roofing
- H - Corrugate roofing
- I - Metal entry cover
- J - Timber pergola
- K - Timber screening
- L - Metal louvres
- M - Metal panel flashing
- N - Prefinished fibre-cement panel

**Three
Sixty
Architecture**



Northbrook Wanaka Retirement
Village
Northlake
Wanaka

Type C Elevations

Scale @ A3 1:4.7437, 1:150
File No. C20017
Date 7/07/2020
Revision

Sheet No. **RC-5C.03**

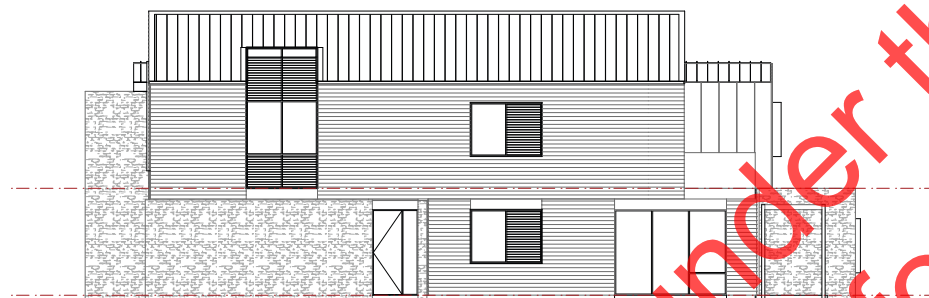
Three Sixty Architecture
Level 1, The Yard
173 St Asaph Street
Christchurch 8140

03 366 3349



E01 Elevation

- | Scale 1:150



E02 Elevation

- | Scale 1:150



Generic Perspective Image 1



Generic Perspective Image 2

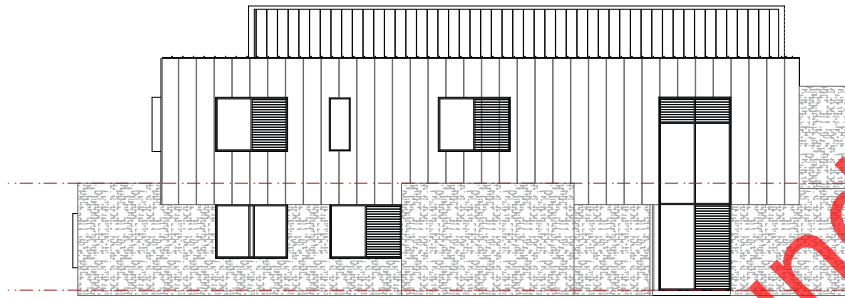
KEY	
---	8m above original Ground Level
---	Proposed Ground Level
---	Existing Ground Level
NOTE: Above cut lines taken from face of building unless noted otherwise	
The height limits detailed in these elevations are based upon information available to date. Final detailed building design may result in height variations of +/- 300mm	
Refer to PPG mesh for RLS to building slips	



- A - Cedar battens
- B - Board & batten
- C - Brick veneer
- D - Vertical long run metal cladding
- E - Weatherboards
- F - Plaster
- G - Standing seam metal tray roofing
- H - Corrugate roofing
- I - Metal entry cover
- J - Timber pergola
- K - Timber screening
- L - Metal louvres
- M - Metal panel flashing
- N - Prefinished fibre-cement panel



E03 Elevation
- | Scale 1:150



E04 Elevation
- | Scale 1:150

KEY

--- 8m above original Ground Level

— Proposed Ground Level

--- Existing Ground Level

NOTE: Above cut lines taken from face of building unless noted otherwise

The height limits detailed in these elevations are based upon information available to date. Final detailed building design may result in height variations of +/- 300mm

Refer to PPG mesh for RLS to building slabs



- A - Cedar battens
- B - Board & batten
- C - Brick veneer
- D - Vertical long run metal cladding
- E - Weatherboards
- F - Plaster
- G - Standing seam metal tray roofing
- H - Corrugate roofing
- I - Metal entry cover
- J - Timber pergola
- K - Timber screening
- L - Metal louvres
- M - Metal panel flashing
- N - Prefinished fibre-cement panel

ATTACHMENT 5
RIVER TERRACE MASTERPLAN
AND SUBDIVISION PLANS





RIVER TERRACE
CROMWELL

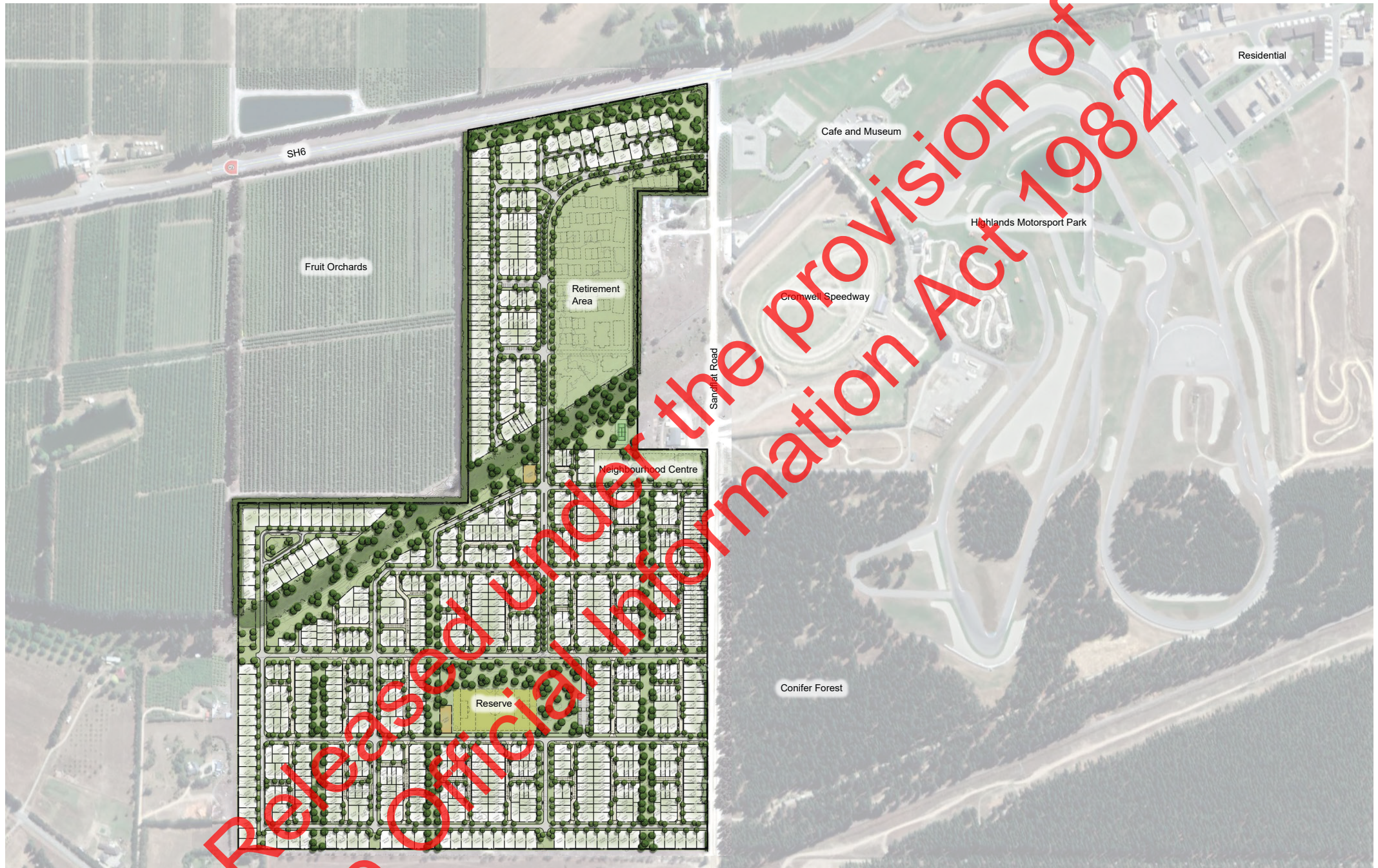


Released under the provision of
the Official Information Act 1982



River Terrace Cromwell Site Location







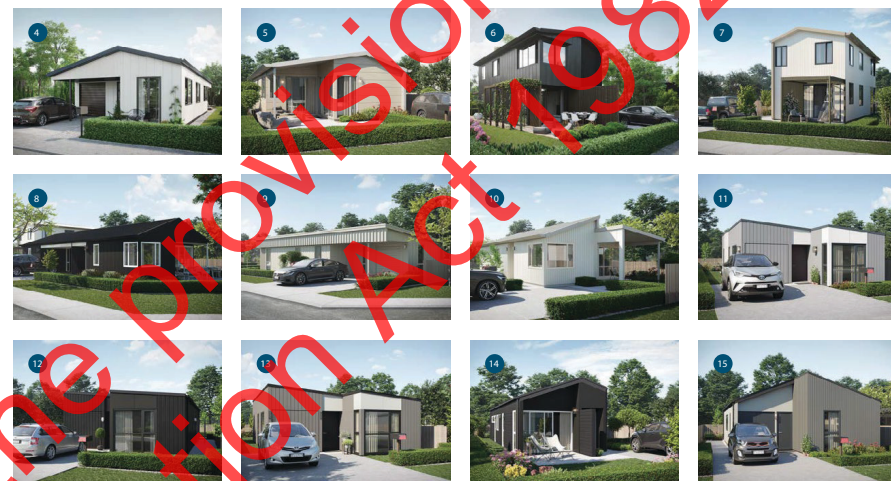




River Terrace Homes

House Type	Bedrooms	Bathrooms	House Floor Area	Parking Area	Outdoor Area	Total Floor Area
Modern Homes						
1 Alexander	2	1	69 m ²	13 m ²	46 m ²	128 m ²
2 Beaumont	2	1	68 m ²	13 m ²	57 m ²	138 m ²
3 Carrick	3	1	87 m ²	13 m ²	37 m ²	137 m ²
4 Dillon	3	1	93 m ²	26 m ²	35 m ²	154 m ²
5 Emerald	3	1	87 m ²	13 m ²	44 m ²	144 m ²
6 Fairhall	3	1.5	105 m ²	13 m ²	57 m ²	175 m ²
7 Gulliver	3	1.5	108 m ²	30 m ²	42 m ²	180 m ²
8 Harper	3	1	98 m ²	29 m ²	37 m ²	164 m ²
9 Irwell	3	1	93 m ²	13 m ²	32 m ²	138 m ²
10 Juno	3	1	90 m ²	13 m ²	32 m ²	135 m ²
11 Kennet I	2	1	70 m ²	22 m ²	27 m ²	119 m ²
12 Kennet II	3	1	83 m ²	19 m ²	28 m ²	130 m ²
13 Kennet III	3	2	91 m ²	17 m ²	33 m ²	141 m ²
14 Lilburne	2	1	73 m ²	13 m ²	38 m ²	124 m ²
15 Mackenzie	3	1	82 m ²	16 m ²	27 m ²	125 m ²
16 Nevis	3	1	80 m ²	13 m ²	18 m ²	111 m ²
House Type	Bedrooms	Bathrooms	House Floor Area	Garage/ Parking Area	Outdoor Area	Total Floor Area
Vantage Homes						
17 Olivine III	3	2	102 m ²	20 m ²	44 m ²	166 m ²
18 Olivine IV	4	2	113 m ²	20 m ²	27 m ²	160 m ²
19 Puketi	4	3	148 m ²	20 m ²	35 m ²	203 m ²
20 Ryton	3	2	111 m ²	20 m ²	48 m ²	179 m ²
21 Saxon	4	2.5	144 m ²	18 m ²	36 m ²	198 m ²
22 Sumner	4	2.5	143 m ²	23 m ²	46 m ²	212 m ²
23 Thames III	3	2	98 m ²	37 m ²	38 m ²	173 m ²
24 Thames IV	4	2	119 m ²	37 m ²	45 m ²	201 m ²
25 Turnbull III	3	2	101 m ²	47 m ²	36 m ²	184 m ²
26 Turnbull IV	4	2	116 m ²	43 m ²	41 m ²	200 m ²
27 Victoria	3	1.5	102 m ²	38 m ²	53 m ²	193 m ²
28 Waikare	4	3	158 m ²	21 m ²	47 m ²	226 m ²
29 Otago III	3	2	108 m ²	21 m ²	34 m ²	163 m ²
30 Otago IV	4	2	116 m ²	21 m ²	33 m ²	170 m ²

Modern Homes



Vantage Homes

