

4.2 Flood Level Survey

The BoPRC survey of flood debris levels after the 2018 event were used as the basis of the calibration. This survey and the employed chainage values for Waiteti Stream are presented in Figure 14. In total, 17 calibration points were captured along the Waiteti Stream.

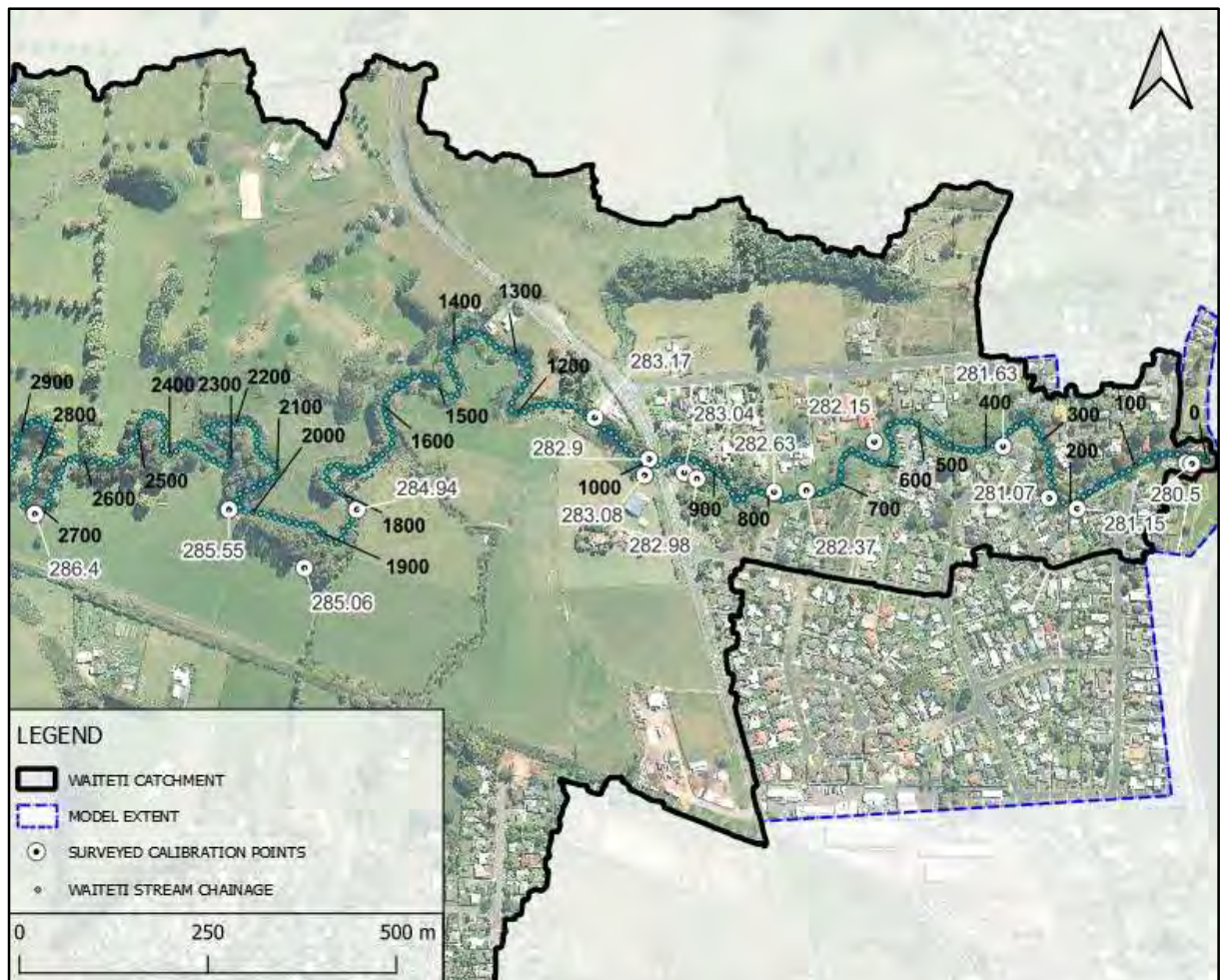


Figure 14: Surveyed flood levels and chainage locations for the Waiteti Stream

4.3 Selecting a Model Resolution

Whilst a high model resolution is often desirable, the trade off is always simulation time. The Australian Rainfall and Runoff guideline states that:

“The resolution of a 2D model grid/mesh determines the scale of physical features and flow behaviour that can be modelled for a given study area. Selection of an appropriate resolution is generally driven by a combination of the following factors: