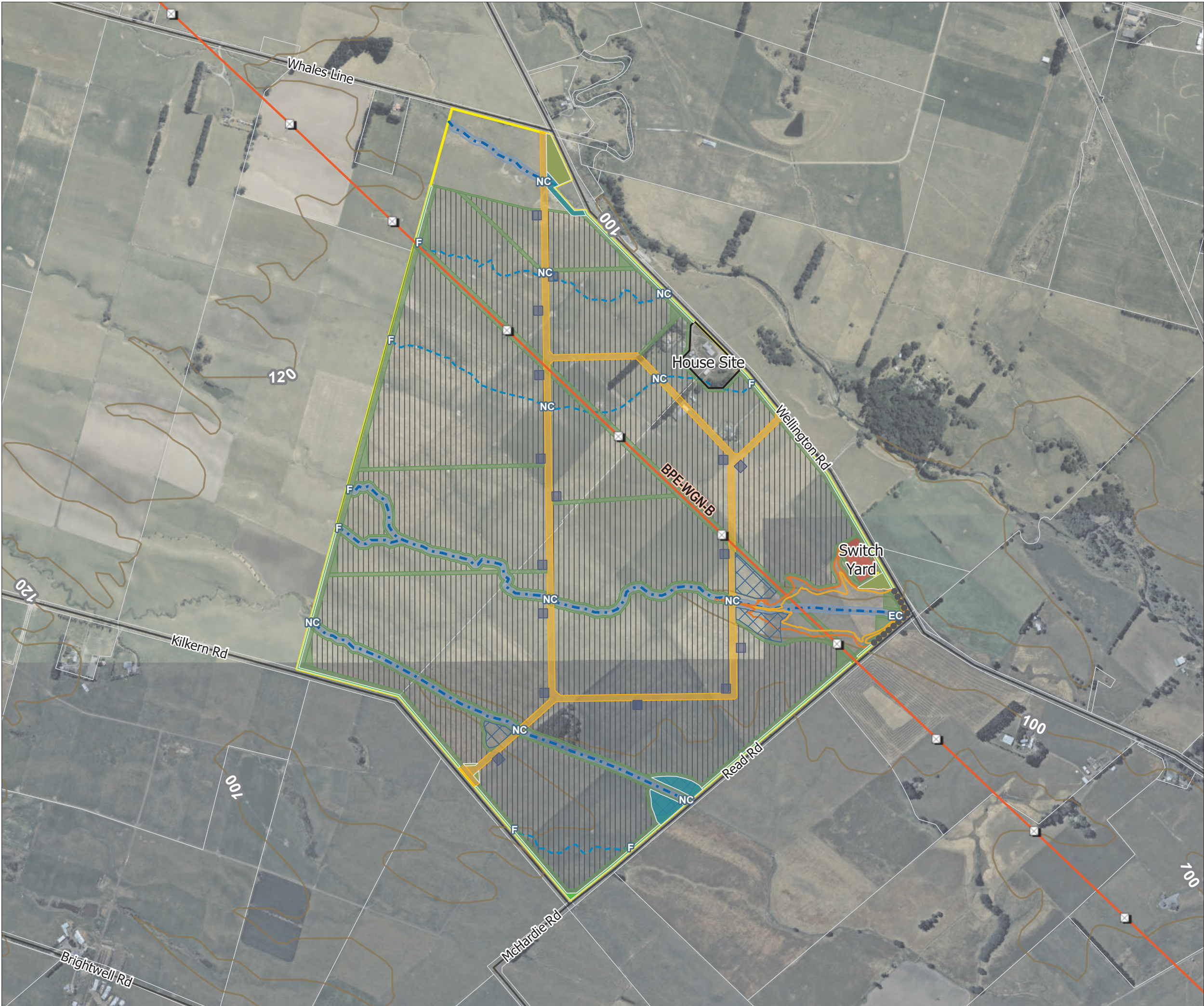


GIS@beca.com  
File: P:\286\2867656\1-WP\WG-GIS\01-Map\2867656 Solar Farm Sites\2867656 Solar Farm Sites.aprx Author: RC681 Date: 26/05/2023



## Solar Farm Site Layout

Marton

- Solar Panel Layout
- Inverter Locations
- Switch Yard
- House Site
- Potential Stormwater Management/Attenuation Areas
- Extreme Flood Event Level
- Identified Flood Event Level
- Site Property
- NZ Contours (Topo 1:50k)
- Public Roads
- Primary Parcels
- Poplar Poles, Plants At 5.0m Centres
- Native Dryland Revegetation Planting
- Native Riparian/Wetland Revegetation Planting
- Hedge Screen Planting Strip (5.0m Max)

### Site Access Roads

- Access Road
- Grass Access Between Rows (10m Width)
- Grass Buffer & Access
- Battery Shed Entry

### Open Watercourse & Access

- Open Watercourse (20m Width)
- Access Path (5m Width)

### Crossing Type

- EC Existing Culvert
- NC New Culvert
- F Ford

### Watercourses

- Ephemeral
- Intermittent

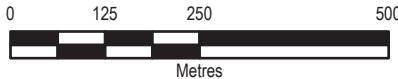
### Structures

- Double Circuit Steel Tower

### Transline

- 110 kV Overhead (12m clear each side)

Map Scale @ A3: 1:10,000



Revision	Author	Verified	Approved	Date
3	RG681	BMM2	RD753	26/05/2023
2	RG681	BMM2	RD753	21/12/2022
1	RG681	BMM2	JBF	10/02/2022



Client: Energy Farms Ltd

Discipline: GIS

Project: Solar Farm Grid Connection

Drawing No: GIS-2867656-11

