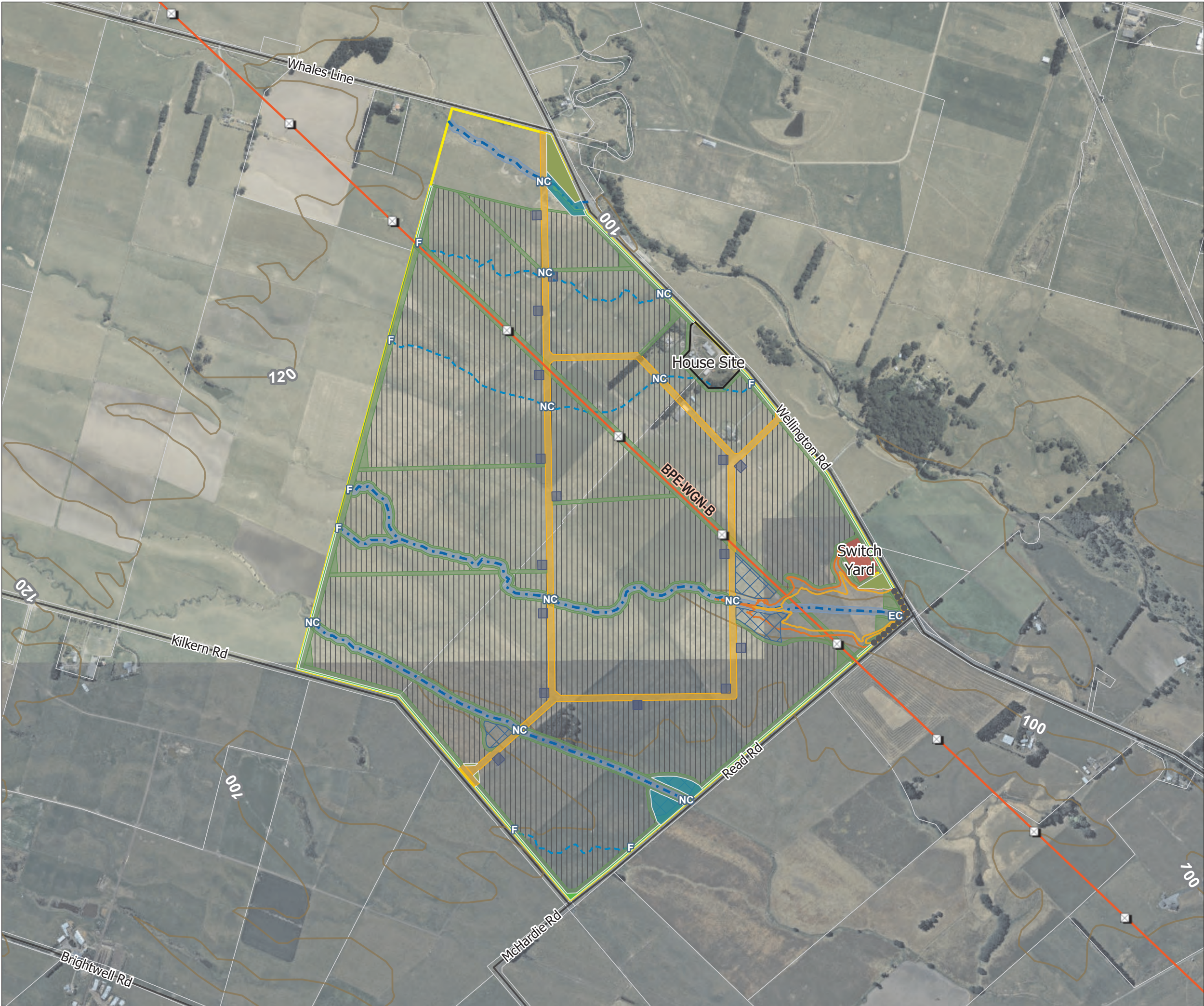


GIS@beca.com
File: P:\2867656\1-WP\WG-GIS\01-Map\2867656 Solar Farm Sites\2867656 Solar Farm Sites.aprx Author: RG681 Date: 21/12/2022



Solar Farm Site Layout

Marton

- ||| Solar Panel Layout
- Inverter Locations
- Switch Yard
- House Site
- ▨ Potential Stormwater Management/Attenuation Areas
- ▭ Extreme Flood Event Level
- ▭ Identified Flood Event Level
- ▭ Site Property
- NZ Contours (Topo 1:50k)
- Public Roads
- ▭ Primary Parcels
- Poplar Poles, Plants At 5.0m Centres
- Native Dryland Revegetation Planting
- Native Riparian/Wetland Revegetation Planting
- Hedge Screen Planting Strip (5.0m Max)

Site Access Roads

- ▭ Access Road
- ▭ Grass Access Between Rows (10m Width)
- ▭ Grass Buffer & Access
- ▭ Battery Shed Entry

Open Watercourse & Access

- ▭ Open Watercourse (20m Width)
- ▭ Access Path (5m Width)

Crossing Type

- EC Existing Culvert
- NC New Culvert
- F Ford

Watercourses

- - - Ephemeral
- ... Intermittent

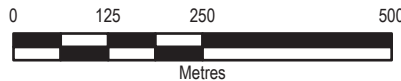
Structures

- ▣ Double Circuit Steel Tower

Transline

- 110 kV Overhead (12m clear each side)

Map Scale @ A3: 1:10,000



Revision	Author	Verified	Approved	Date
2	RG681	BMM2	RD753	21/12/2022
1	RG681	BMM2	JBF	10/02/2022



Client: Energy Farms Ltd

Discipline: GIS

Project: Solar Farm Grid Connection

Drawing No: GIS-2867656-11

