



RECORD OF TITLE
UNDER LAND TRANSFER ACT 2017
FREEHOLD
Search Copy




R.W. Muir
Registrar-General
of Land

Identifier **376806**
Land Registration District **Wellington**
Date Issued 20 August 2010

Prior References
WN23C/209

Estate Fee Simple
Area 1.0070 hectares more or less
Legal Description Lot 1 Deposited Plan 394192
Registered Owners
Grenada North Nominees Limited

Interests

Subject to Section 59 Land Act 1948
8516760.3 Consent Notice pursuant to Section 221 Resource Management Act 1991 - 20.8.2010 at 10:22 am
Subject to a right (in gross) to convey water over part marked AP, AQ on DP 394192 in favour of the Wellington City Council created by Easement Instrument 8516760.8 - 20.8.2010 at 10:22 am
Subject to an (in gross) electricity and telecommunications easement over part marked AR on DP 394192 in favour of Wellington Electricity Lines Limited created by Easement Instrument 8516760.11 - 20.8.2010 at 10:22 am

Proposed Easements

PURPOSE	SHOWN	SEV. TEN	DOM. TEN
RIGHT OF WAY	BH	LOT 12	LOT 13
RIGHT TO CONVEY WATER	AO	LOT 1	LOT 2
ELECTRICITY	AR	LOT 1	LOT 2
RIGHT TO CONVEY WATER	AS	LOT 1	LOT 2
BATTERY EASEMENT	BS	LOT 1	LOT 2
ELECTRICITY	BJ	LOT 1	LOT 2

Memorandum of Easements

PURPOSE	SHOWN	SEV. TEN	GRANTEE
RIGHT OF WAY	AT	LOT 2	WELLINGTON CITY COUNCIL
	AV	LOT 16	LOT 15
	AW	LOT 15	LOT 14

Notes:

- Note: Areas labelled A-B, D-J, M, N, P-T, V, AA-AF, AH-AM, and AP (Building exclusion areas), and areas labelled G-NZ (Chilling water locations), AY to be subject to a consent notice.
- * Areas labelled BB, BC, BD, BE, BF, BG, or BT are subject to a consent notice (Earthworks & bush protection).

Registered Proprietor

[Signature] Authorised Officer

Amalgamation Condition

That lots 8, 9 & 12 hereon be held in the same Certificate of Title.

New C.O.T. Allocated

LOT 1 - CT 376806
 LOT 2 - CT 376807
 LOT 3 - CT 376808
 LOT 4 - CT 376809
 LOT 5 - CT 376810
 LOT 6 - CT 376811
 LOT 7 - CT 376812
 LOT 8 - CT 376813
 LOT 9 - CT 376814
 LOT 10 - CT 376815
 LOT 11 - CT 376816
 LOT 12 - CT 376817
 LOT 13 - CT 376818
 LOT 14 - CT 376819
 LOT 15 - CT 376820
 LOT 16 - CT 376821
 LOT 17 - CT 376822
 LOT 18 - CT 376823
 LOT 19 - CT 376824

Class of Survey = 1

Total Area 25.0715 ha.

Comprised in CT WN 229 / 209 (All)

CT WN 245 / 209 (EO)

Surveyor Russell Ian Paterson

Field Book p. 1

Date 26/11/2007

Approved as to Survey by Land Information NZ on 04/10/2007

Deposited by Land Information NZ on 20/19/2010

DP 394192





RECORD OF TITLE
UNDER LAND TRANSFER ACT 2017
FREEHOLD
Search Copy




R.W. Muir
Registrar-General
of Land

Identifier **376807**
Land Registration District **Wellington**
Date Issued 20 August 2010

Prior References
WN23C/209

Estate Fee Simple
Area 9686 square metres more or less
Legal Description Lot 2 Deposited Plan 394192
Registered Owners
Grenada North Nominees Limited

Interests

Subject to Section 59 Land Act 1948

8516760.3 Consent Notice pursuant to Section 221 Resource Management Act 1991 - 20.8.2010 at 10:22 am

Subject to a right (in gross) of way over part marked AT on DP 394192 in favour of the Wellington City Council created by Easement Instrument 8516760.5 - 20.8.2010 at 10:22 am

The easements created by Easement Instrument 8516760.5 are subject to Section 243 (a) Resource Management Act 1991

Subject to an (in gross) electricity and telecommunications easement over part marked AS, AT on DP 394192 in favour of Wellington Electricity Lines Limited created by Easement Instrument 8516760.11 - 20.8.2010 at 10:22 am

Proposed Easements

PURPOSE	SHOWN	SEV. TEN	DOM. TEN
RIGHT OF WAY	BH	LOT 12	LOT 13
RIGHT TO CONVEY WATER	AO	LOT 1	LOT 2
ELECTRICITY	AR	LOT 1	LOT 2
RIGHT TO CONVEY WATER	AS	LOT 1	LOT 2
BATTERY EASEMENT	BS	LOT 1	LOT 2
ELECTRICITY	BJ	LOT 1	LOT 2

Memorandum of Easements

PURPOSE	SHOWN	SEV. TEN	GRANTEE
RIGHT OF WAY	AT	LOT 2	WELLINGTON CITY COUNCIL
	AV	LOT 16	LOT 15
	AW	LOT 15	LOT 14

Notes:

- Note: Areas labelled A-B, D-J, M, N, P-T, V, AA-AF, AH-AM, and AP (Building exclusion areas), and areas labelled G-NZ (Chilling water locations), AY to be subject to a consent notice.
- * Areas labelled BB, BC, BD, BE, BF, BG, or BT are subject to a consent notice (Earthworks & bush protection).

Registered Proprietor

[Signature] Authorised Officer

Amalgamation Condition

That lots 8, 9 & 12 hereon be held in the same Certificate of Title.

New C.O.T. Allocated

LOT 1 - CT 376807
 LOT 2 - CT 376809
 LOT 3 - CT 376810
 LOT 4 - CT 376811
 LOT 5 - CT 376812
 LOT 6 - CT 376813
 LOT 7 - CT 376814
 LOT 8 - CT 376815
 LOT 9 - CT 376816
 LOT 10 - CT 376817
 LOT 11 - CT 376818
 LOT 12 - CT 376819
 LOT 13 - CT 376820
 LOT 14 - CT 376821
 LOT 15 - CT 376822
 LOT 16 - CT 376823
 LOT 17 - CT 376824
 LOT 18 - CT 376825
 LOT 19 - CT 376826

Class of Survey = 1

Total Area 25.0715 ha.

Comprised in CT WN 236 / 209 (All)

CT WN 245 / 209 (EO)

Surveyor Ian Paterson

Signature *[Signature]* **Date** 26/11/2007

Field Book *[Signature]* **Thence Book** *[Signature]*

Reference *[Signature]* **Reference** *[Signature]*

Examined *[Signature]* **Conced** *[Signature]*

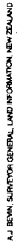
Approved as to Survey by Land Information NZ on 04/10/2007

Deposited by Land Information NZ on 20/19/2010

DP 394192

TP: SHT 1 OF 3 SHTS.







RECORD OF TITLE
UNDER LAND TRANSFER ACT 2017
FREEHOLD
Search Copy




R.W. Muir
Registrar-General
of Land

Identifier **376808**
Land Registration District **Wellington**
Date Issued 20 August 2010

Prior References
WN23C/209

Estate Fee Simple
Area 1.0406 hectares more or less
Legal Description Lot 3 Deposited Plan 394192
Registered Owners
Grenada North Nominees Limited

Interests

Subject to Section 59 Land Act 1948

8516760.3 Consent Notice pursuant to Section 221 Resource Management Act 1991 - 20.8.2010 at 10:22 am

Subject to a right (in gross) of way over part marked AU, BJ on DP 394192 in favour of the Wellington City Council created by Easement Instrument 8516760.5 - 20.8.2010 at 10:22 am

The easements created by Easement Instrument 8516760.5 are subject to Section 243 (a) Resource Management Act 1991

Subject to an (in gross) electricity and telecommunications easement over part marked BJ on DP 394192 in favour of Wellington Electricity Lines Limited created by Easement Instrument 8516760.11 - 20.8.2010 at 10:22 am

Proposed Easements

PURPOSE	SHOWN	SEV. TEN	DOM. TEN
RIGHT OF WAY	BH	LOT 12	LOT 13
RIGHT TO CONVEY WATER	AO	LOT 1	LOT 2
ELECTRICITY	AR	LOT 1	LOT 2
RIGHT TO CONVEY WATER	AS	LOT 1	LOT 2
BATTERY EASEMENT	BS	LOT 1	LOT 2
ELECTRICITY	BJ	LOT 1	LOT 2

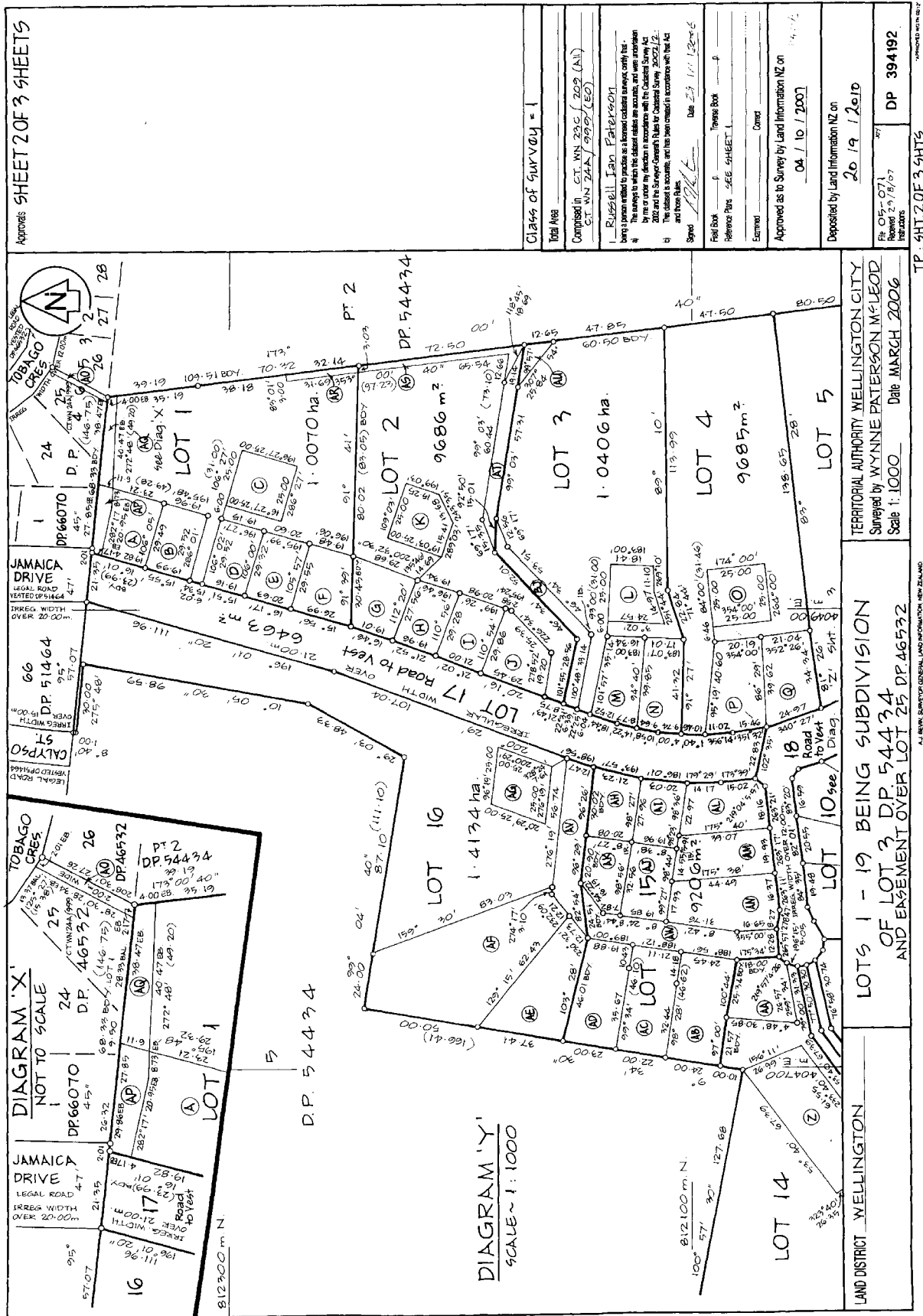
Memorandum of Easements

PURPOSE	SHOWN	SEV. TEN	GRANTEE
RIGHT OF WAY	AT	LOT 2	WELLINGTON CITY COUNCIL
	AV	LOT 16	LOT 15
	AW	LOT 15	LOT 14

Registered Proprietor
 The Wellington City Council, pursuant to section 223 of the Resource Management Act 1991, on the 20th day of August 2007, subject to the grant of the Memorandum of Easement and subject to the amalgamation condition set out hereon.

Authorised Officer
 [Signature]
 Amalgamation Condition
 That lots 8, 9 & 12 hereon be held in the same Certificate of Title.
 New C.T. Allocated
 LOT 1 - CT 376808
 LOT 2 - CT 376809
 LOT 3 - CT 376810
 LOT 4 - CT 376811
 LOT 5 - CT 376812
 LOT 6 - CT 376813
 LOT 7 - CT 376814
 LOT 8 - CT 376815
 LOT 9 - CT 376816
 LOT 10 - CT 376817
 LOT 11 - CT 376818
 LOT 12 - CT 376819
 LOT 13 - CT 376820
 LOT 14 - CT 376821
 LOT 15 - CT 376822
 LOT 16 - CT 376823
 LOT 17 - CT 376824
 LOT 18 - CT 376825
 LOT 19 - CT 376826

Class of Survey = 1
Total Area 25.0715 ha.
Comprised in CT WN 230 / 209 (All)
CT WN 245 / 292 (EO)
 Russell Ian Paterson
 being a person entitled to practice as a licensed cadastral surveyor, certify that the survey to which this plan relates is accurate and was undertaken by me or under my direction in accordance with the Cadastral Survey Act 2002 and the Survey-General Rules for Cadastral Survey 2002/12. The plan is accurate and has been created in accordance with that Act and those Rules.
 Signed [Signature] Date 26/11/2007
 Field Book [Blank] Theme Book [Blank]
 Reference Plans: 603/2229, 2230/1, 2230/2, 2230/3, 2230/4, 2230/5, 2230/6, 2230/7, 2230/8, 2230/9, 2230/10, 2230/11, 2230/12, 2230/13, 2230/14, 2230/15, 2230/16, 2230/17, 2230/18, 2230/19, 2230/20, 2230/21, 2230/22, 2230/23, 2230/24, 2230/25, 2230/26, 2230/27, 2230/28, 2230/29, 2230/30, 2230/31, 2230/32, 2230/33, 2230/34, 2230/35, 2230/36, 2230/37, 2230/38, 2230/39, 2230/40, 2230/41, 2230/42, 2230/43, 2230/44, 2230/45, 2230/46, 2230/47, 2230/48, 2230/49, 2230/50, 2230/51, 2230/52, 2230/53, 2230/54, 2230/55, 2230/56, 2230/57, 2230/58, 2230/59, 2230/60, 2230/61, 2230/62, 2230/63, 2230/64, 2230/65, 2230/66, 2230/67, 2230/68, 2230/69, 2230/70, 2230/71, 2230/72, 2230/73, 2230/74, 2230/75, 2230/76, 2230/77, 2230/78, 2230/79, 2230/80, 2230/81, 2230/82, 2230/83, 2230/84, 2230/85, 2230/86, 2230/87, 2230/88, 2230/89, 2230/90, 2230/91, 2230/92, 2230/93, 2230/94, 2230/95, 2230/96, 2230/97, 2230/98, 2230/99, 2230/100, 2230/101, 2230/102, 2230/103, 2230/104, 2230/105, 2230/106, 2230/107, 2230/108, 2230/109, 2230/110, 2230/111, 2230/112, 2230/113, 2230/114, 2230/115, 2230/116, 2230/117, 2230/118, 2230/119, 2230/120, 2230/121, 2230/122, 2230/123, 2230/124, 2230/125, 2230/126, 2230/127, 2230/128, 2230/129, 2230/130, 2230/131, 2230/132, 2230/133, 2230/134, 2230/135, 2230/136, 2230/137, 2230/138, 2230/139, 2230/140, 2230/141, 2230/142, 2230/143, 2230/144, 2230/145, 2230/146, 2230/147, 2230/148, 2230/149, 2230/150, 2230/151, 2230/152, 2230/153, 2230/154, 2230/155, 2230/156, 2230/157, 2230/158, 2230/159, 2230/160, 2230/161, 2230/162, 2230/163, 2230/164, 2230/165, 2230/166, 2230/167, 2230/168, 2230/169, 2230/170, 2230/171, 2230/172, 2230/173, 2230/174, 2230/175, 2230/176, 2230/177, 2230/178, 2230/179, 2230/180, 2230/181, 2230/182, 2230/183, 2230/184, 2230/185, 2230/186, 2230/187, 2230/188, 2230/189, 2230/190, 2230/191, 2230/192, 2230/193, 2230/194, 2230/195, 2230/196, 2230/197, 2230/198, 2230/199, 2230/200, 2230/201, 2230/202, 2230/203, 2230/204, 2230/205, 2230/206, 2230/207, 2230/208, 2230/209, 2230/210, 2230/211, 2230/212, 2230/213, 2230/214, 2230/215, 2230/216, 2230/217, 2230/218, 2230/219, 2230/220, 2230/221, 2230/222, 2230/223, 2230/224, 2230/225, 2230/226, 2230/227, 2230/228, 2230/229, 2230/230, 2230/231, 2230/232, 2230/233, 2230/234, 2230/235, 2230/236, 2230/237, 2230/238, 2230/239, 2230/240, 2230/241, 2230/242, 2230/243, 2230/244, 2230/245, 2230/246, 2230/247, 2230/248, 2230/249, 2230/250, 2230/251, 2230/252, 2230/253, 2230/254, 2230/255, 2230/256, 2230/257, 2230/258, 2230/259, 2230/260, 2230/261, 2230/262, 2230/263, 2230/264, 2230/265, 2230/266, 2230/267, 2230/268, 2230/269, 2230/270, 2230/271, 2230/272, 2230/273, 2230/274, 2230/275, 2230/276, 2230/277, 2230/278, 2230/279, 2230/280, 2230/281, 2230/282, 2230/283, 2230/284, 2230/285, 2230/286, 2230/287, 2230/288, 2230/289, 2230/290, 2230/291, 2230/292, 2230/293, 2230/294, 2230/295, 2230/296, 2230/297, 2230/298, 2230/299, 2230/300, 2230/301, 2230/302, 2230/303, 2230/304, 2230/305, 2230/306, 2230/307, 2230/308, 2230/309, 2230/310, 2230/311, 2230/312, 2230/313, 2230/314, 2230/315, 2230/316, 2230/317, 2230/318, 2230/319, 2230/320, 2230/321, 2230/322, 2230/323, 2230/324, 2230/325, 2230/326, 2230/327, 2230/328, 2230/329, 2230/330, 2230/331, 2230/332, 2230/333, 2230/334, 2230/335, 2230/336, 2230/337, 2230/338, 2230/339, 2230/340, 2230/341, 2230/342, 2230/343, 2230/344, 2230/345, 2230/346, 2230/347, 2230/348, 2230/349, 2230/350, 2230/351, 2230/352, 2230/353, 2230/354, 2230/355, 2230/356, 2230/357, 2230/358, 2230/359, 2230/360, 2230/361, 2230/362, 2230/363, 2230/364, 2230/365, 2230/366, 2230/367, 2230/368, 2230/369, 2230/370, 2230/371, 2230/372, 2230/373, 2230/374, 2230/375, 2230/376, 2230/377, 2230/378, 2230/379, 2230/380, 2230/381, 2230/382, 2230/383, 2230/384, 2230/385, 2230/386, 2230/387, 2230/388, 2230/389, 2230/390, 2230/391, 2230/392, 2230/393, 2230/394, 2230/395, 2230/396, 2230/397, 2230/398, 2230/399, 2230/400, 2230/401, 2230/402, 2230/403, 2230/404, 2230/405, 2230/406, 2230/407, 2230/408, 2230/409, 2230/410, 2230/411, 2230/412, 2230/413, 2230/414, 2230/415, 2230/416, 2230/417, 2230/418, 2230/419, 2230/420, 2230/421, 2230/422, 2230/423, 2230/424, 2230/425, 2230/426, 2230/427, 2230/428, 2230/429, 2230/430, 2230/431, 2230/432, 2230/433, 2230/434, 2230/435, 2230/436, 2230/437, 2230/438, 2230/439, 2230/440, 2230/441, 2230/442, 2230/443, 2230/444, 2230/445, 2230/446, 2230/447, 2230/448, 2230/449, 2230/450, 2230/451, 2230/452, 2230/453, 2230/454, 2230/455, 2230/456, 2230/457, 2230/458, 2230/459, 2230/460, 2230/461, 2230/462, 2230/463, 2230/464, 2230/465, 2230/466, 2230/467, 2230/468, 2230/469, 2230/470, 2230/471, 2230/472, 2230/473, 2230/474, 2230/475, 2230/476, 2230/477, 2230/478, 2230/479, 2230/480, 2230/481, 2230/482, 2230/483, 2230/484, 2230/485, 2230/486, 2230/487, 2230/488, 2230/489, 2230/490, 2230/491, 2230/492, 2230/493, 2230/494, 2230/495, 2230/496, 2230/497, 2230/498, 2230/499, 2230/500, 2230/501, 2230/502, 2230/503, 2230/504, 2230/505, 2230/506, 2230/507, 2230/508, 2230/509, 2230/510, 2230/511, 2230/512, 2230/513, 2230/514, 2230/515, 2230/516, 2230/517, 2230/518, 2230/519, 2230/520, 2230/521, 2230/522, 2230/523, 2230/524, 2230/525, 2230/526, 2230/527, 2230/528, 2230/529, 2230/530, 2230/531, 2230/532, 2230/533, 2230/534, 2230/535, 2230/536, 2230/537, 2230/538, 2230/539, 2230/540, 2230/541, 2230/542, 2230/543, 2230/544, 2230/545, 2230/546, 2230/547, 2230/548, 2230/549, 2230/550, 2230/551, 2230/552, 2230/553, 2230/554, 2230/555, 2230/556, 2230/557, 2230/558, 2230/559, 2230/560, 2230/561, 2230/562, 2230/563, 2230/564, 2230/565, 2230/566, 2230/567, 2230/568, 2230/569, 2230/570, 2230/571, 2230/572, 2230/573, 2230/574, 2230/575, 2230/576, 2230/577, 2230/578, 2230/579, 2230/580, 2230/581, 2230/582, 2230/583, 2230/584, 2230/585, 2230/586, 2230/587, 2230/588, 2230/589, 2230/590, 2230/591, 2230/592, 2230/593, 2230/594, 2230/595, 2230/596, 2230/597, 2230/598, 2230/599, 2230/600, 2230/601, 2230/602, 2230/603, 2230/604, 2230/605, 2230/606, 2230/607, 2230/608, 2230/609, 2230/610, 2230/611, 2230/612, 2230/613, 2230/614, 2230/615, 2230/616, 2230/617, 2230/618, 2230/619, 2230/620, 2230/621, 2230/622, 2230/623, 2230/624, 2230/625, 2230/626, 2230/627, 2230/628, 2230/629, 2230/630, 2230/631, 2230/632, 2230/633, 2230/634, 2230/635, 2230/636, 2230/637, 2230/638, 2230/639, 2230/640, 2230/641, 2230/642, 2230/643, 2230/644, 2230/645, 2230/646, 2230/647, 2230/648, 2230/649, 2230/650, 2230/651, 2230/652, 2230/653, 2230/654, 2230/655, 2230/656, 2230/657, 2230/658, 2230/659, 2230/660, 2230/661, 2230/662, 2230/663, 2230/664, 2230/665, 2230/666, 2230/667, 2230/668, 2230/669, 2230/670, 2230/671, 2230/672, 2230/673, 2230/674, 2230/675, 2230/676, 2230/677, 2230/678, 2230/679, 2230/680, 2230/681, 2230/682, 2230/683, 2230/684, 2230/685, 2230/686, 2230/687, 2230/688, 2230/689, 2230/690, 2230/691, 2230/692, 2230/693, 2230/694, 2230/695, 2230/696, 2230/697, 2230/698, 2230/699, 2230/700, 2230/701, 2230/702, 2230/703, 2230/704, 2230/705, 2230/706, 2230/707, 2230/708, 2230/709, 2230/710, 2230/711, 2230/712, 2230/713, 2230/714, 2230/715, 2230/716, 2230/717, 2230/718, 2230/719, 2230/720, 2230/721, 2230/722, 2230/723, 2230/724, 2230/725, 2230/726, 2230/727, 2230/728, 2230/729, 2230/730, 2230/731, 2230/732, 2230/733, 2230/734, 2230/735, 2230/736, 2230/737, 2230/738, 2230/739, 2230/740, 2230/741, 2230/742, 2230/743, 2230/744, 2230/745, 2230/746, 2230/747, 2230/748, 2230/749, 2230/750, 2230/751, 2230/752, 2230/753, 2230/754, 2230/755, 2230/756, 2230/757, 2230/758, 2230/759, 2230/760, 2230/761, 2230/762, 2230/763, 2230/764, 2230/765, 2230/766, 2230/767, 2230/768, 2230/769, 2230/770, 2230/771, 2230/772, 2230/773, 2230/774, 2230/775, 2230/776, 2230/777, 2230/778, 2230/779, 2230/780, 2230/781, 2230/782, 2230/783, 2230/784, 2230/785, 2230/786, 2230/787, 2230/788, 2230/789, 2230/790, 2230/791, 2230/792, 2230/793, 2230/794, 2230/795, 2230/796, 2230/797, 2230/798, 2230/799, 2230/800, 2230/801, 2230/802, 2230/803, 2230/804, 2230/805, 2230/806, 2230/807, 2230/808, 2230/809, 2230/810, 2230/811, 2230/812, 2230/813, 2230/814, 2230/815, 2230/816, 2230/817, 2230/818, 2230/819, 2230/820, 2230/821, 2230/822, 2230/823, 2230/824, 2230/825, 2230/826, 2230/827, 2230/828, 2230/829, 2230/830, 2230/831, 2230/832, 2230/833, 2230/834, 2230/835, 2230/836, 2230/837, 2230/838, 2230/839, 2230/840, 2230/841, 2230/842, 2230/843, 2230/844, 2230/845, 2230/846, 2230/847, 2230/848, 2230/849, 2230/850, 2230/851, 2230/852, 2230/853, 2230/854, 2230/855, 2230/856, 2230/857, 2230/858, 2230/859, 2230/860, 2230/861, 2230/862, 2230/863, 2230/864, 2230/865, 2230/866, 2230/867, 2230/868, 2230/869, 2230/870, 2230/871, 2230/872, 2230/873, 2230/874, 2230/875, 2230/876, 2230/877, 2230/878, 2230/879, 2230/880, 2230/881, 2230/882, 2230/883, 2230/884, 2230/885, 2230/886, 2230/887, 2230/888, 2230/889, 2230/890, 2230/891, 2230/892, 2230/893, 2230/894, 2230/895, 2230/896, 2230/897, 2230/898, 2230/899, 2230/900, 2230/901, 2230/902, 2230/903, 2230/904, 2230/905, 2230/906, 2230/907, 2230/908, 2230/909, 2230/910, 2230/911, 2230/912, 2230/913, 2230/914, 2230/915, 2230/916, 2230/917, 2230/918, 2230/919, 2230/920, 2230/921, 2230/922, 2230/923, 2230/924, 2230/925, 2230/926, 2230/927, 2230/928, 2230/929, 2230/930, 2230/931, 2230/932, 2230/933, 2230/934, 2230/935, 2230/936, 2230/937, 2230/938, 2230/939, 2230/940, 2230/941, 2230/942, 2230/943, 2230/944, 2230/945, 2230/946, 2230/947, 2230/948, 2230/949, 2230/950, 2230/951, 2230/952, 2230/953, 2230/954, 2230/955, 2230/956, 2230/957, 2230/958, 2230/959, 2230/960, 2230/961, 2230/962, 2230/963, 2230/964, 2230/965, 2230/966, 2230/967, 2230/968, 2230/969, 2230/970, 2230/971, 2230/972, 2230/973, 2230/974, 2230/975, 2230/976, 2230/977, 2230/978, 2230/979, 2230/980, 2230/981, 2230/982, 2230/983, 2230/984, 2230/985, 2230/986, 2230/987, 2230/988, 2230/989, 2230/990, 2230/991, 2230/992, 2230/993, 2230/994, 2230/995, 2230/996, 2230/997, 2230/998, 2230/999, 2230/1000, 2230/1001, 2230/1002, 2230/1003, 2230/1004, 2230/1005, 2230/1006, 2230/1007, 2230/1008, 2230/1009, 2230/1010, 2230/1011, 2230/1012, 2230/1013, 2230/1014, 2230/1015, 2230/1016, 2230/1017, 2230/1018, 2230/1019, 2230/1020, 2230/1021, 2230/1022, 2230/1023, 2230/1024, 2230/1025, 2230/1026, 2230/1027, 2230/1028, 2230/1029, 2230/1030, 2230/1031, 2230/1032, 2230/1033, 2230/1034, 2230/1035, 2230/1036, 2230/1037, 2230/1038, 2230/1039, 2230/1040, 2230/1041, 2230/1042, 2230/1043, 2230/1044, 2230/1045, 2230/1046, 2230/1047, 2230/1048, 2230/1049, 2230/1050, 2230/1051, 2230/1052, 2230/1053, 2230/1054, 2230/1055, 2230/1056, 2230/1057, 2230/1058, 2230/1059, 2230/1060, 2230/1061, 2230/1062, 2230/1063, 2230/1064, 2230/1065, 2230/1066, 2230/1067, 2230/1068, 2230/1069, 2230/1070, 2230/1071, 2230/1072, 2230/1073, 2230/1074, 2230/1075, 2230/1076, 2230/1077, 2230/1078, 2230/1079, 2230/1080, 2230/1081, 2230/1082, 2230/1083, 2230/1084, 2230/1085, 2230/1086, 2230/1087, 2230/1088, 2230/1089, 2230/1090, 2230/1091, 2230/1092, 2230/1093, 2230/1094, 2230/1095, 2230/1096, 2230/1097, 2230/1098,







RECORD OF TITLE
UNDER LAND TRANSFER ACT 2017
FREEHOLD
Search Copy




R.W. Muir
Registrar-General
of Land

Identifier **376809**
Land Registration District **Wellington**
Date Issued 20 August 2010

Prior References
WN23C/209

Estate Fee Simple
Area 9685 square metres more or less
Legal Description Lot 4 Deposited Plan 394192
Registered Owners
Grenada North Nominees Limited

Interests

Subject to Section 59 Land Act 1948
8516760.3 Consent Notice pursuant to Section 221 Resource Management Act 1991 - 20.8.2010 at 10:22 am

TP: SHT: 10F3 SHTS.







**RECORD OF TITLE
UNDER LAND TRANSFER ACT 2017
FREEHOLD
Search Copy**




R.W. Muir
Registrar-General
of Land

Identifier **376810**
Land Registration District **Wellington**
Date Issued 20 August 2010

Prior References
WN23C/209

Estate Fee Simple
Area 9805 square metres more or less
Legal Description Lot 5 Deposited Plan 394192
Registered Owners
Grenada North Nominees Limited

Interests

Subject to Section 59 Land Act 1948
8516760.3 Consent Notice pursuant to Section 221 Resource Management Act 1991 - 20.8.2010 at 10:22 am

Proposed Easements

PURPOSE	SHOWN	SEV. TEN	DOM. TEN
RIGHT OF WAY	BH	LOT 12	LOT 13
RIGHT TO CONVEY WATER	AO	LOT 1	LOT 2
ELECTRICITY	AR	LOT 1	LOT 2
RIGHT TO CONVEY WATER	AS	LOT 1	LOT 2
BATTERY EASEMENT	BS	LOT 1	LOT 2
ELECTRICITY	BJ	LOT 1	LOT 2

Memorandum of Easements

PURPOSE	SHOWN	SEV. TEN	GRANTEE
RIGHT OF WAY	AT	LOT 2	WELLINGTON CITY COUNCIL
	AV	LOT 16	WELLINGTON CITY COUNCIL
	AW	LOT 15	WELLINGTON CITY COUNCIL

Notes:

- Note: Areas labelled A-B, D-J, M, N, P-T, V, AA-AF, AH-AM, and AP (Building exclusion areas), and areas labelled G-NZ (Chilling water locations), AY to be subject to a consent notice.
- * Areas labelled BB, BC, BD, BE, BF, BG, or BT are subject to a consent notice (Earthworks & bush protection).

Registered Proprietor

[Signature] **Authorised Officer**

Amalgamation Condition

That lots 8, 9 & 12 hereon be held in the same Certificate of Title.

New C.O.T. Allocated

LOT 1 - CT 376809
LOT 2 - CT 376809
LOT 3 - CT 376810
LOT 4 - CT 376811
LOT 5 - CT 376812
LOT 6 - CT 376813
LOT 7 - CT 376814
LOT 8 - CT 376815
LOT 9 - CT 376816
LOT 10 - CT 376817
LOT 11 - CT 376818
LOT 12 - CT 376819
LOT 13 - CT 376820
LOT 14 - CT 376821
LOT 15 - CT 376822
LOT 16 - CT 376823
LOT 17 - CT 376824
LOT 18 - CT 376825
LOT 19 - CT 376826

Class of Survey = 1

Total Area 25.0715 ha.

Comprising: CT 376809, CT 376810, CT 376811, CT 376812, CT 376813, CT 376814, CT 376815, CT 376816, CT 376817, CT 376818, CT 376819, CT 376820, CT 376821, CT 376822, CT 376823, CT 376824, CT 376825, CT 376826

Surveyed by: Russell Ian Paterson

Date: 26/11/2007

Field Book: p. 1

Reference: 604/2224, 2225, 2226, 2227, 2228, 2229, 2230, 2231, 2232, 2233, 2234, 2235, 2236, 2237, 2238, 2239, 2240, 2241, 2242, 2243, 2244, 2245, 2246, 2247, 2248, 2249, 2250, 2251, 2252, 2253, 2254, 2255, 2256, 2257, 2258, 2259, 2260, 2261, 2262, 2263, 2264, 2265, 2266, 2267, 2268, 2269, 2270, 2271, 2272, 2273, 2274, 2275, 2276, 2277, 2278, 2279, 2280, 2281, 2282, 2283, 2284, 2285, 2286, 2287, 2288, 2289, 2290, 2291, 2292, 2293, 2294, 2295, 2296, 2297, 2298, 2299, 2300, 2301, 2302, 2303, 2304, 2305, 2306, 2307, 2308, 2309, 2310, 2311, 2312, 2313, 2314, 2315, 2316, 2317, 2318, 2319, 2320, 2321, 2322, 2323, 2324, 2325, 2326, 2327, 2328, 2329, 2330, 2331, 2332, 2333, 2334, 2335, 2336, 2337, 2338, 2339, 2340, 2341, 2342, 2343, 2344, 2345, 2346, 2347, 2348, 2349, 2350, 2351, 2352, 2353, 2354, 2355, 2356, 2357, 2358, 2359, 2360, 2361, 2362, 2363, 2364, 2365, 2366, 2367, 2368, 2369, 2370, 2371, 2372, 2373, 2374, 2375, 2376, 2377, 2378, 2379, 2380, 2381, 2382, 2383, 2384, 2385, 2386, 2387, 2388, 2389, 2390, 2391, 2392, 2393, 2394, 2395, 2396, 2397, 2398, 2399, 2400, 2401, 2402, 2403, 2404, 2405, 2406, 2407, 2408, 2409, 2410, 2411, 2412, 2413, 2414, 2415, 2416, 2417, 2418, 2419, 2420, 2421, 2422, 2423, 2424, 2425, 2426, 2427, 2428, 2429, 2430, 2431, 2432, 2433, 2434, 2435, 2436, 2437, 2438, 2439, 2440, 2441, 2442, 2443, 2444, 2445, 2446, 2447, 2448, 2449, 2450, 2451, 2452, 2453, 2454, 2455, 2456, 2457, 2458, 2459, 2460, 2461, 2462, 2463, 2464, 2465, 2466, 2467, 2468, 2469, 2470, 2471, 2472, 2473, 2474, 2475, 2476, 2477, 2478, 2479, 2480, 2481, 2482, 2483, 2484, 2485, 2486, 2487, 2488, 2489, 2490, 2491, 2492, 2493, 2494, 2495, 2496, 2497, 2498, 2499, 2500, 2501, 2502, 2503, 2504, 2505, 2506, 2507, 2508, 2509, 2510, 2511, 2512, 2513, 2514, 2515, 2516, 2517, 2518, 2519, 2520, 2521, 2522, 2523, 2524, 2525, 2526, 2527, 2528, 2529, 2530, 2531, 2532, 2533, 2534, 2535, 2536, 2537, 2538, 2539, 2540, 2541, 2542, 2543, 2544, 2545, 2546, 2547, 2548, 2549, 2550, 2551, 2552, 2553, 2554, 2555, 2556, 2557, 2558, 2559, 2560, 2561, 2562, 2563, 2564, 2565, 2566, 2567, 2568, 2569, 2570, 2571, 2572, 2573, 2574, 2575, 2576, 2577, 2578, 2579, 2580, 2581, 2582, 2583, 2584, 2585, 2586, 2587, 2588, 2589, 2590, 2591, 2592, 2593, 2594, 2595, 2596, 2597, 2598, 2599, 2600, 2601, 2602, 2603, 2604, 2605, 2606, 2607, 2608, 2609, 2610, 2611, 2612, 2613, 2614, 2615, 2616, 2617, 2618, 2619, 2620, 2621, 2622, 2623, 2624, 2625, 2626, 2627, 2628, 2629, 2630, 2631, 2632, 2633, 2634, 2635, 2636, 2637, 2638, 2639, 2640, 2641, 2642, 2643, 2644, 2645, 2646, 2647, 2648, 2649, 2650, 2651, 2652, 2653, 2654, 2655, 2656, 2657, 2658, 2659, 2660, 2661, 2662, 2663, 2664, 2665, 2666, 2667, 2668, 2669, 2670, 2671, 2672, 2673, 2674, 2675, 2676, 2677, 2678, 2679, 2680, 2681, 2682, 2683, 2684, 2685, 2686, 2687, 2688, 2689, 2690, 2691, 2692, 2693, 2694, 2695, 2696, 2697, 2698, 2699, 2700, 2701, 2702, 2703, 2704, 2705, 2706, 2707, 2708, 2709, 2710, 2711, 2712, 2713, 2714, 2715, 2716, 2717, 2718, 2719, 2720, 2721, 2722, 2723, 2724, 2725, 2726, 2727, 2728, 2729, 2730, 2731, 2732, 2733, 2734, 2735, 2736, 2737, 2738, 2739, 2740, 2741, 2742, 2743, 2744, 2745, 2746, 2747, 2748, 2749, 2750, 2751, 2752, 2753, 2754, 2755, 2756, 2757, 2758, 2759, 2760, 2761, 2762, 2763, 2764, 2765, 2766, 2767, 2768, 2769, 2770, 2771, 2772, 2773, 2774, 2775, 2776, 2777, 2778, 2779, 2780, 2781, 2782, 2783, 2784, 2785, 2786, 2787, 2788, 2789, 2790, 2791, 2792, 2793, 2794, 2795, 2796, 2797, 2798, 2799, 2800, 2801, 2802, 2803, 2804, 2805, 2806, 2807, 2808, 2809, 2810, 2811, 2812, 2813, 2814, 2815, 2816, 2817, 2818, 2819, 2820, 2821, 2822, 2823, 2824, 2825, 2826, 2827, 2828, 2829, 2830, 2831, 2832, 2833, 2834, 2835, 2836, 2837, 2838, 2839, 2840, 2841, 2842, 2843, 2844, 2845, 2846, 2847, 2848, 2849, 2850, 2851, 2852, 2853, 2854, 2855, 2856, 2857, 2858, 2859, 2860, 2861, 2862, 2863, 2864, 2865, 2866, 2867, 2868, 2869, 2870, 2871, 2872, 2873, 2874, 2875, 2876, 2877, 2878, 2879, 2880, 2881, 2882, 2883, 2884, 2885, 2886, 2887, 2888, 2889, 2890, 2891, 2892, 2893, 2894, 2895, 2896, 2897, 2898, 2899, 2900, 2901, 2902, 2903, 2904, 2905, 2906, 2907, 2908, 2909, 2910, 2911, 2912, 2913, 2914, 2915, 2916, 2917, 2918, 2919, 2920, 2921, 2922, 2923, 2924, 2925, 2926, 2927, 2928, 2929, 2930, 2931, 2932, 2933, 2934, 2935, 2936, 2937, 2938, 2939, 2940, 2941, 2942, 2943, 2944, 2945, 2946, 2947, 2948, 2949, 2950, 2951, 2952, 2953, 2954, 2955, 2956, 2957, 2958, 2959, 2960, 2961, 2962, 2963, 2964, 2965, 2966, 2967, 2968, 2969, 2970, 2971, 2972, 2973, 2974, 2975, 2976, 2977, 2978, 2979, 2980, 2981, 2982, 2983, 2984, 2985, 2986, 2987, 2988, 2989, 2990, 2991, 2992, 2993, 2994, 2995, 2996, 2997, 2998, 2999, 3000

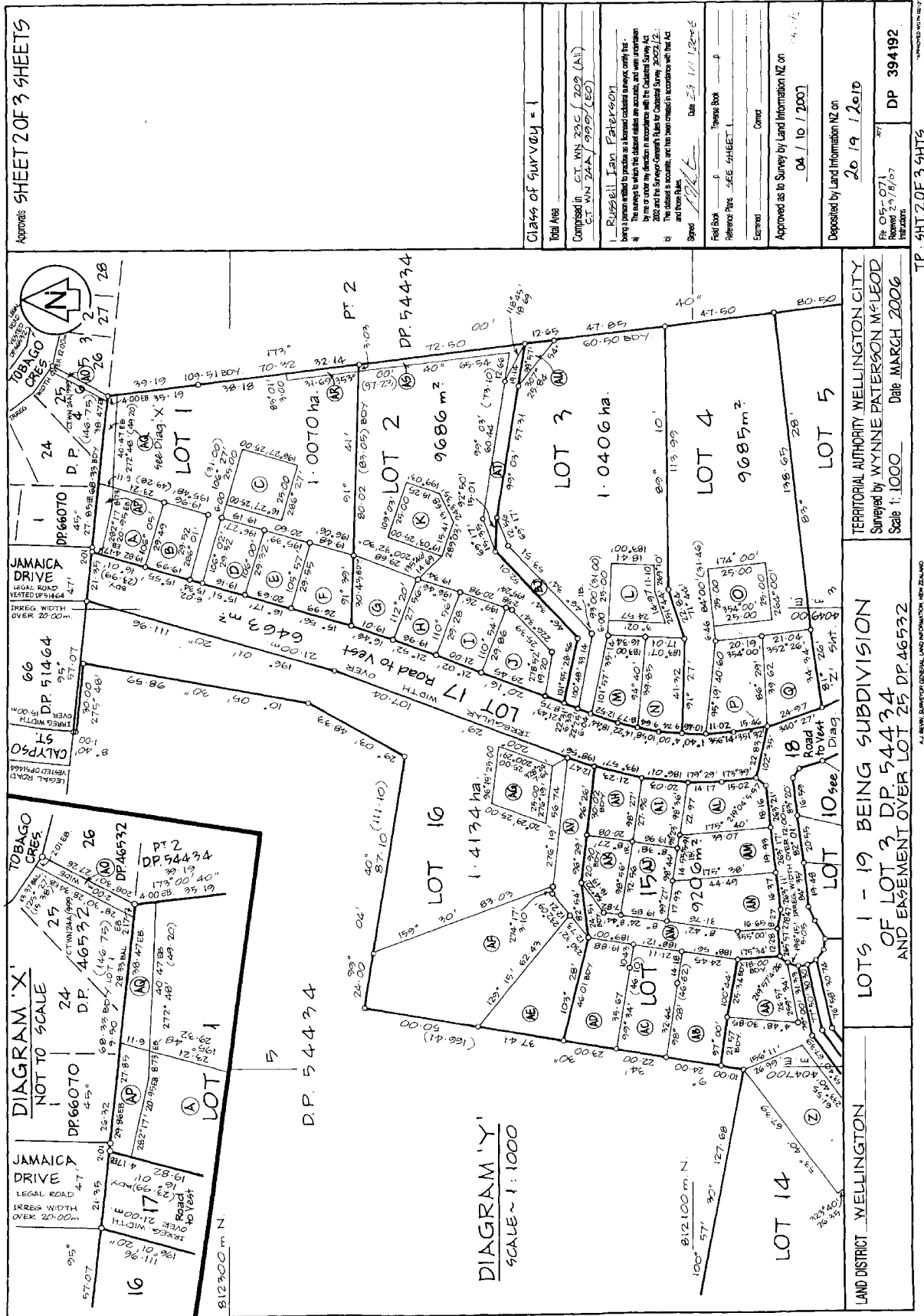
Approved as to Survey by Land Information NZ on

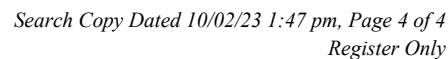
04/10/2007

Deposited by Land Information NZ on

20/19/2010

DP 394192







RECORD OF TITLE
UNDER LAND TRANSFER ACT 2017
FREEHOLD
Search Copy




R.W. Muir
Registrar-General
of Land

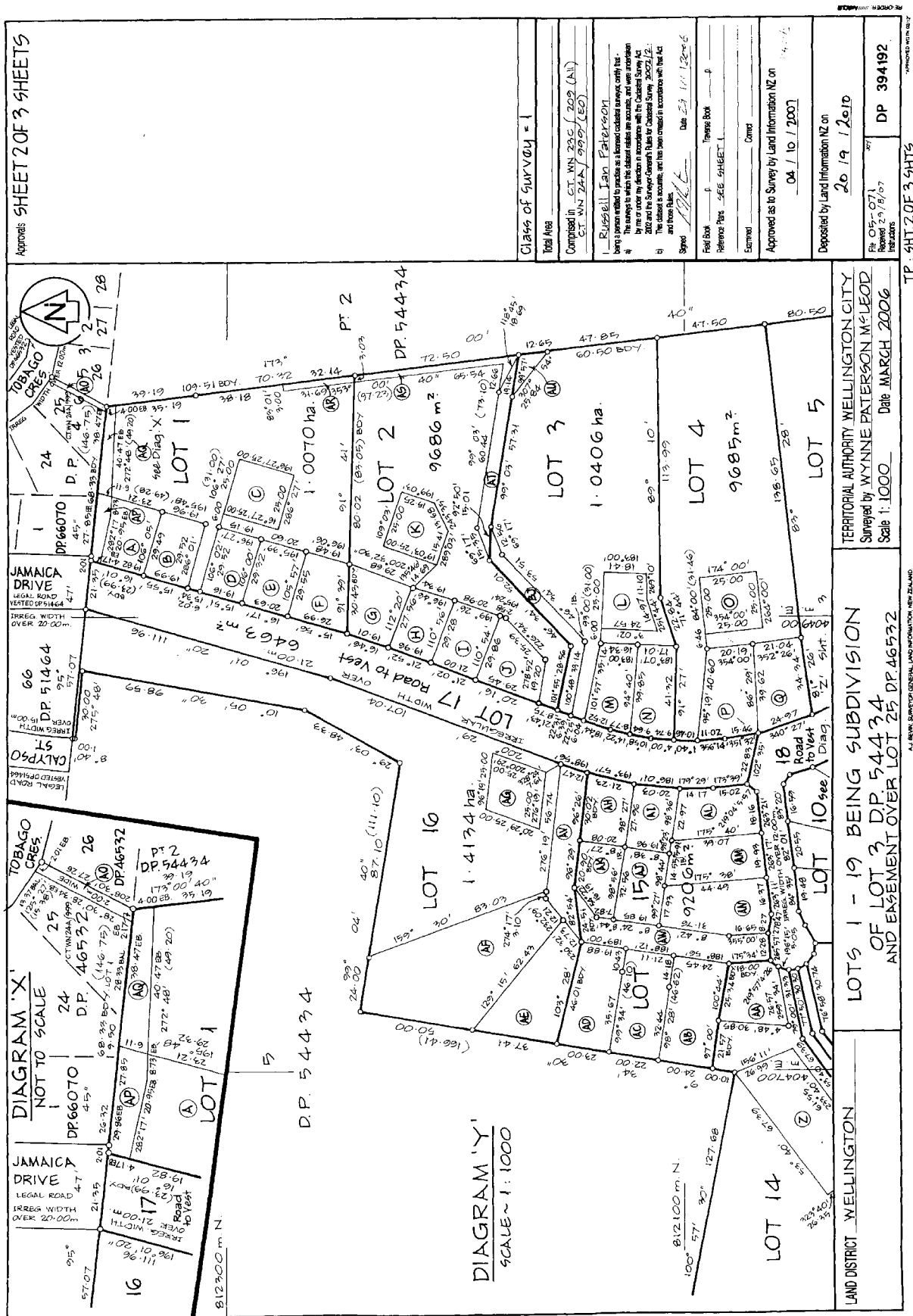
Identifier **376811**
Land Registration District **Wellington**
Date Issued 20 August 2010

Prior References
WN23C/209

Estate Fee Simple
Area 8550 square metres more or less
Legal Description Lot 6 Deposited Plan 394192
Registered Owners
Grenada North Nominees Limited

Interests
Subject to Section 59 Land Act 1948
8516760.3 Consent Notice pursuant to Section 221 Resource Management Act 1991 - 20.8.2010 at 10:22 am

2.1100 10/20/2014 01:00:00





RECORD OF TITLE
UNDER LAND TRANSFER ACT 2017
FREEHOLD
Search Copy




R.W. Muir
Registrar-General
of Land

Identifier **376812**
Land Registration District **Wellington**
Date Issued 20 August 2010

Prior References
WN23C/209

Estate Fee Simple
Area 1.1574 hectares more or less
Legal Description Lot 7 Deposited Plan 394192
Registered Owners
Grenada North Nominees Limited

Interests

Subject to Section 59 Land Act 1948
8516760.3 Consent Notice pursuant to Section 221 Resource Management Act 1991 - 20.8.2010 at 10:22 am

Proposed Easements

PURPOSE	SHOWN	SEV. TEN	DOM. TEN
RIGHT OF WAY	BH	LOT 12	LOT 13
RIGHT TO CONVEY WATER	AO	LOT 1	GRANTEE
ELECTRICITY	AR	LOT 1	VECTOR LIMITED
RIGHT TO CONVEY WATER	AS	LOT 1	WELLINGTON CITY COUNCIL
BATTERY EASEMENT	BS	LOT 1	WELLINGTON CITY COUNCIL
ELECTRICITY	BJ	LOT 1	VECTOR LIMITED

Memorandum of Easements

PURPOSE	SHOWN	SEV. TEN	GRANTEE
RIGHT OF WAY	AT	LOT 2	WELLINGTON CITY COUNCIL
	AV	LOT 16	CITY COUNCIL
	AW	LOT 15	

Notes:

- Note: Areas labelled A-B, D-J, M, N, P-T, V, AA-AF, AH-AM, and AP (Building exclusion areas), and areas labelled G-NZ (Chilling water locations), AY to be subject to a consent notice.
- * Areas labelled BB, BC, BD, BE, BF, BG, or BT are subject to a consent notice (Earthworks & bush protection).

Registered Proprietor

[Signature] Authorised Officer

Amalgamation Condition

That lots 8, 9 & 12 hereon be held in the same Certificate of Title.

New C.O.T. Allocated

LOT 1 - CT 376809
LOT 2 - CT 376809
LOT 3 - CT 376810
LOT 4 - CT 376810
LOT 5 - CT 376810
LOT 6 - CT 376811
LOT 7 - CT 376812
LOT 8 - CT 376812
LOT 9 - CT 376812
LOT 10 - CT 376814
LOT 11 - CT 376814
LOT 12 - CT 376814
LOT 13 - CT 376814
LOT 14 - CT 376814
LOT 15 - CT 376814
LOT 16 - CT 376814
LOT 17 - CT 376814
LOT 18 - CT 376814
LOT 19 - CT 376814

Class of Survey = 1

Total Area 25.0715 ha.

Comprised in CT 376809 / 209 (All)

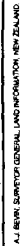
CT 376809 / 209 (All)

Surveyed by Russell Ian Paterson

Date 26/11/2007

Field Book p. 1

Reference Plan 600/2229, 2230, 2231, 2232, 2233, 2234, 2235, 2236, 2237, 2238, 2239, 2240, 2241, 2242, 2243, 2244, 2245, 2246, 2247, 2248, 2249, 2250, 2251, 2252, 2253, 2254, 2255, 2256, 2257, 2258, 2259, 2260, 2261, 2262, 2263, 2264, 2265, 2266, 2267, 2268, 2269, 2270, 2271, 2272, 2273, 2274, 2275, 2276, 2277, 2278, 2279, 2280, 2281, 2282, 2283, 2284, 2285, 2286, 2287, 2288, 2289, 2290, 2291, 2292, 2293, 2294, 2295, 2296, 2297, 2298, 2299, 2300, 2301, 2302, 2303, 2304, 2305, 2306, 2307, 2308, 2309, 2310, 2311, 2312, 2313, 2314, 2315, 2316, 2317, 2318, 2319, 2320, 2321, 2322, 2323, 2324, 2325, 2326, 2327, 2328, 2329, 2330, 2331, 2332, 2333, 2334, 2335, 2336, 2337, 2338, 2339, 2340, 2341, 2342, 2343, 2344, 2345, 2346, 2347, 2348, 2349, 2350, 2351, 2352, 2353, 2354, 2355, 2356, 2357, 2358, 2359, 2360, 2361, 2362, 2363, 2364, 2365, 2366, 2367, 2368, 2369, 2370, 2371, 2372, 2373, 2374, 2375, 2376, 2377, 2378, 2379, 2380, 2381, 2382, 2383, 2384, 2385, 2386, 2387, 2388, 2389, 2390, 2391, 2392, 2393, 2394, 2395, 2396, 2397, 2398, 2399, 2400, 2401, 2402, 2403, 2404, 2405, 2406, 2407, 2408, 2409, 2410, 2411, 2412, 2413, 2414, 2415, 2416, 2417, 2418, 2419, 2420, 2421, 2422, 2423, 2424, 2425, 2426, 2427, 2428, 2429, 2430, 2431, 2432, 2433, 2434, 2435, 2436, 2437, 2438, 2439, 2440, 2441, 2442, 2443, 2444, 2445, 2446, 2447, 2448, 2449, 2450, 2451, 2452, 2453, 2454, 2455, 2456, 2457, 2458, 2459, 2460, 2461, 2462, 2463, 2464, 2465, 2466, 2467, 2468, 2469, 2470, 2471, 2472, 2473, 2474, 2475, 2476, 2477, 2478, 2479, 2480, 2481, 2482, 2483, 2484, 2485, 2486, 2487, 2488, 2489, 2490, 2491, 2492, 2493, 2494, 2495, 2496, 2497, 2498, 2499, 2500, 2501, 2502, 2503, 2504, 2505, 2506, 2507, 2508, 2509, 2510, 2511, 2512, 2513, 2514, 2515, 2516, 2517, 2518, 2519, 2520, 2521, 2522, 2523, 2524, 2525, 2526, 2527, 2528, 2529, 2530, 2531, 2532, 2533, 2534, 2535, 2536, 2537, 2538, 2539, 2540, 2541, 2542, 2543, 2544, 2545, 2546, 2547, 2548, 2549, 2550, 2551, 2552, 2553, 2554, 2555, 2556, 2557, 2558, 2559, 2560, 2561, 2562, 2563, 2564, 2565, 2566, 2567, 2568, 2569, 2570, 2571, 2572, 2573, 2574, 2575, 2576, 2577, 2578, 2579, 2580, 2581, 2582, 2583, 2584, 2585, 2586, 2587, 2588, 2589, 2590, 2591, 2592, 2593, 2594, 2595, 2596, 2597, 2598, 2599, 2600, 2601, 2602, 2603, 2604, 2605, 2606, 2607, 2608, 2609, 2610, 2611, 2612, 2613, 2614, 2615, 2616, 2617, 2618, 2619, 2620, 2621, 2622, 2623, 2624, 2625, 2626, 2627, 2628, 2629, 2630, 2631, 2632, 2633, 2634, 2635, 2636, 2637, 2638, 2639, 2640, 2641, 2642, 2643, 2644, 2645, 2646, 2647, 2648, 2649, 2650, 2651, 2652, 2653, 2654, 2655, 2656, 2657, 2658, 2659, 2660, 2661, 2662, 2663, 2664, 2665, 2666, 2667, 2668, 2669, 2670, 2671, 2672, 2673, 2674, 2675, 2676, 2677, 2678, 2679, 2680, 2681, 2682, 2683, 2684, 2685, 2686, 2687, 2688, 2689, 2690, 2691, 2692, 2693, 2694, 2695, 2696, 2697, 2698, 2699, 2700, 2701, 2702, 2703, 2704, 2705, 2706, 2707, 2708, 2709, 2710, 2711, 2712, 2713, 2714, 2715, 2716, 2717, 2718, 2719, 2720, 2721, 2722, 2723, 2724, 2725, 2726, 2727, 2728, 2729, 2730, 2731, 2732, 2733, 2734, 2735, 2736, 2737, 2738, 2739, 2740, 2741, 2742, 2743, 2744, 2745, 2746, 2747, 2748, 2749, 2750, 2751, 2752, 2753, 2754, 2755, 2756, 2757, 2758, 2759, 2760, 2761, 2762, 2763, 2764, 2765, 2766, 2767, 2768, 2769, 2770, 2771, 2772, 2773, 2774, 2775, 2776, 2777, 2778, 2779, 2780, 2781, 2782, 2783, 2784, 2785, 2786, 2787, 2788, 2789, 2790, 2791, 2792, 2793, 2794, 2795, 2796, 2797, 2798, 2799, 2800, 2801, 2802, 2803, 2804, 2805, 2806, 2807, 2808, 2809, 2810, 2811, 2812, 2813, 2814, 2815, 2816, 2817, 2818, 2819, 2820, 2821, 2822, 2823, 2824, 2825, 2826, 2827, 2828, 2829, 2830, 2831, 2832, 2833, 2834, 2835, 2836, 2837, 2838, 2839, 2840, 2841, 2842, 2843, 2844, 2845, 2846, 2847, 2848, 2849, 2850, 2851, 2852, 2853, 2854, 2855, 2856, 2857, 2858, 2859, 2860, 2861, 2862, 2863, 2864, 2865, 2866, 2867, 2868, 2869, 2870, 2871, 2872, 2873, 2874, 2875, 2876, 2877, 2878, 2879, 2880, 2881, 2882, 2883, 2884, 2885, 2886, 2887, 2888, 2889, 2890, 2891, 2892, 2893, 2894, 2895, 2896, 2897, 2898, 2899, 2900, 2901, 2902, 2903, 2904, 2905, 2906, 2907, 2908, 2909, 2910, 2911, 2912, 2913, 2914, 2915, 2916, 2917, 2918, 2919, 2920, 2921, 2922, 2923, 2924, 2925, 2926, 2927, 2928, 2929, 2930, 2931, 2932, 2933, 2934, 2935, 2936, 2937, 2938, 2939, 2940, 2941, 2942, 2943, 2944, 2945, 2946, 2947, 2948, 2949, 2950, 2951, 2952, 2953, 2954, 2955, 2956, 2957, 2958, 2959, 2960, 2961, 2962, 2963, 2964, 2965, 2966, 2967, 2968, 2969, 2970, 2971, 2972, 2973, 2974, 2975, 2976, 2977, 2978, 2979, 2980, 2981, 2982, 2983, 2984, 2985, 2986, 2987, 2988, 2989, 2990, 2991, 2992, 2993, 2994, 2995, 2996, 2997, 2998, 2999, 3000, 3001, 3002, 3003, 3004, 3005, 3006, 3007, 3008, 3009, 3010, 3011, 3012, 3013, 3014, 3015, 3016, 3017, 3018, 3019, 3020, 3021, 3022, 3023, 3024, 3025, 3026, 3027, 3028, 3029, 3030, 3031, 3032, 3033, 3034, 3035, 3036, 3037, 3038, 3039, 3040, 3041, 3042, 3043, 3044, 3045, 3046, 3047, 3048, 3049, 3050, 3051, 3052, 3053, 3054, 3055, 3056, 3057, 3058, 3059, 3060, 3061, 3062, 3063, 3064, 3065, 3066, 3067, 3068, 3069, 3070, 3071, 3072, 3073, 3074, 3075, 3076, 3077, 3078, 3079, 3080, 3081, 3082, 3083, 3084, 3085, 3086, 3087, 3088, 3089, 3090, 3091, 3092, 3093, 3094, 3095, 3096, 3097, 3098, 3099, 3100, 3101, 3102, 3103, 3104, 3105, 3106, 3107, 3108, 3109, 3110, 3111, 3112, 3113, 3114, 3115, 3116, 3117, 3118, 3119, 3120, 3121, 3122, 3123, 3124, 3125, 3126, 3127, 3128, 3129, 3130, 3131, 3132, 3133, 3134, 3135, 3136, 3137, 3138, 3139, 3140, 3141, 3142, 3143, 3144, 3145, 3146, 3147, 3148, 3149, 3150, 3151, 3152, 3153, 3154, 3155, 3156, 3157, 3158, 3159, 3160, 3161, 3162, 3163, 3164, 3165, 3166, 3167, 3168, 3169, 3170, 3171, 3172, 3173, 3174, 3175, 3176, 3177, 3178, 3179, 3180, 3181, 3182, 3183, 3184, 3185, 3186, 3187, 3188, 3189, 3190, 3191, 3192, 3193, 3194, 3195, 3196, 3197, 3198, 3199, 3200, 3201, 3202, 3203, 3204, 3205, 3206, 3207, 3208, 3209, 3210, 3211, 3212, 3213, 3214, 3215, 3216, 3217, 3218, 3219, 3220, 3221, 3222, 3223, 3224, 3225, 3226, 3227, 3228, 3229, 3230, 3231, 3232, 3233, 3234, 3235, 3236, 3237, 3238, 3239, 3240, 3241, 3242, 3243, 3244, 3245, 3246, 3247, 3248, 3249, 3250, 3251, 3252, 3253, 3254, 3255, 3256, 3257, 3258, 3259, 3260, 3261, 3262, 3263, 3264, 3265, 3266, 3267, 3268, 3269, 3270, 3271, 3272, 3273, 3274, 3275, 3276, 3277, 3278, 3279, 3280, 3281, 3282, 3283, 3284, 3285, 3286, 3287, 3288, 3289, 3290, 3291, 3292, 3293, 3294, 3295, 3296, 3297, 3298, 3299, 3300, 3301, 3302, 3303, 3304, 3305, 3306, 3307, 3308, 3309, 3310, 3311, 3312, 3313, 3314, 3315, 3316, 3317, 3318, 3319, 3320, 3321, 3322, 3323, 3324, 3325, 3326, 3327, 3328, 3329, 3330, 3331, 3332, 3333, 3334, 3335, 3336, 3337, 3338, 3339, 3340, 3341, 3342, 3343, 3344, 3345, 3346, 3347, 3348, 3349, 3350, 3351, 3352, 3353, 3354, 3355, 3356, 3357, 3358, 3359, 3360, 3361, 3362, 3363, 3364, 3365, 3366, 3367, 3368, 3369, 3370, 3371, 3372, 3373, 3374, 3375, 3376, 3377, 3378, 3379, 3380, 3381, 3382, 3383, 3384, 3385, 3386, 3387, 3388, 3389, 3390, 3391, 3392, 3393, 3394, 3395, 3396, 3397, 3398, 3399, 3400, 3401, 3402, 3403, 3404, 3405, 3406, 3407, 3408, 3409, 3410, 3411, 3412, 3413, 3414, 3415, 3416, 3417, 3418, 3419, 3420, 3421, 3422, 3423, 3424, 3425, 3426, 3427, 3428, 3429, 3430, 3431, 3432, 3433, 3434, 3435, 3436, 3437, 3438, 3439, 3440, 3441, 3442, 3443, 3444, 3445, 3446, 3447, 3448, 3449, 3450, 3451, 3452, 3453, 3454, 3455, 3456, 3457, 3458, 3459, 3460, 3461, 3462, 3463, 3464, 3465, 3466, 3467, 3468, 3469, 3470, 3471, 3472, 3473, 3474, 3475, 3476, 3477, 3478, 3479, 3480, 3481, 3482, 3483, 3484, 3485, 3486, 3487, 3488, 3489, 3490, 3491, 3492, 3493, 3494, 3495, 3496, 3497, 3498, 3499, 3500, 3501, 3502, 3503, 3504, 3505, 3506, 3507, 3508, 3509, 3510, 3511, 3512, 3513, 3514, 3515, 3516, 3517, 3518, 3519, 3520, 3521, 3522, 3523, 3524, 3525, 3526, 3527, 3528, 3529, 3530, 3531, 3532, 3533, 3534, 3535, 3536, 3537, 3538, 3539, 3540, 3541, 3542, 3543, 3544, 3545, 3546, 3547, 3548, 3549, 3550, 3551, 3552, 3553, 3554, 3555, 3556, 3557, 3558, 3559, 3560, 3561, 3562, 3563, 3564, 3565, 3566, 3567, 3568, 3569, 3570, 3571, 3572, 3573, 3574, 3575, 3576, 3577, 3578, 3579, 3580, 3581, 3582, 3583, 3584, 3585, 3586, 3587, 3588, 3589, 3590, 3591, 3592, 3593, 3594, 3595, 3596, 3597, 3598, 3599, 3600, 3601, 3602, 3603, 3604, 3605, 3606, 3607, 3608, 3609, 3610, 3611, 3612, 3613, 3614, 3615, 3616, 3617, 3618, 3619, 3620, 3621, 3622, 3623, 3624, 3625, 3626, 3627, 3628, 3629, 3630, 3631, 3632, 3633, 3634, 3635, 3636, 3637, 3638, 3639, 3640, 3641, 3642, 3643, 3644, 3645, 3646, 3647, 3648, 3649, 3650, 3651, 3652, 3653, 3654, 3655, 3656, 3657, 3658, 3659, 3660, 3661, 3662, 3663, 3664, 3665, 3666, 3667, 3668, 3669, 3670, 3671, 3672, 3673, 3674, 3675, 3676, 3677, 3678, 3679, 3680, 3681, 3682, 3683, 3684, 3685, 3686, 3687, 3688, 3689, 3690, 3691, 3692, 3693, 3694, 3695, 3696, 3697, 3698, 3699, 3700, 3701, 3702, 3703, 3704, 3705, 3706, 3707, 3708, 3709, 3710, 3711, 3712, 3713, 3714, 3715, 3716, 3717, 3718, 3719, 3720, 3721, 3722, 3723, 3724, 3725, 3726, 3727, 3728, 3729, 3730, 3731, 3732, 3733, 3734, 3735, 3736, 3737, 3738, 3739, 3740, 3741, 3742, 3743, 3744, 3745, 3746, 3747, 3748, 3749, 3750, 3751, 3752, 3753, 3754, 3755, 3756, 3757, 3758, 3759, 3760, 3761, 3762, 3763, 3764, 3765, 3766, 3767, 3768, 3769, 3770, 3771, 3772, 3773, 3774, 3775, 3776, 3777, 3778, 3779, 3780, 3781, 3782, 3783, 3784, 3785, 3786, 3787, 3788, 3789, 3790, 3791, 3792, 3793, 3794, 3795, 3796, 3797, 3798, 3799, 3800, 3801, 3802, 3803, 3804, 3805, 3806, 3807, 3808, 3809, 3810, 3811, 3812, 3813, 3814, 3815, 3816, 3817, 3818, 3819, 3820, 3821, 3822, 3823, 3824, 3825, 3826, 3827, 3828, 3829, 3830, 3831, 3832, 3833, 3834, 3835, 3836, 3837, 3838, 3839, 3840, 3841, 3842, 3843, 3844, 3845, 3846, 3847, 3848, 3849, 3850, 3851, 3852, 3853, 3854, 3855, 3856, 3857, 3858, 3859, 3860, 3861, 3862, 3863, 3864, 3865, 3866, 3867, 3868, 3869, 3870, 3871, 3872, 3873, 3874, 3875, 3876, 3877, 3878, 3879, 3880, 3881, 3882, 3883, 3884, 3885, 3886, 3887, 3888, 3889, 3890, 3891, 3892, 3893, 3894, 3895, 3896, 3897, 3898, 3899, 3900, 3901, 3902, 3903, 3904, 3905, 3906, 3907, 3908, 3909, 3910, 3911, 3912, 3913, 3914, 3915, 3916, 3917, 3918, 3919, 3920, 3921, 3922, 3923, 3924, 3925, 3926, 3927, 3928, 3929, 3930, 3931, 3932, 3933, 3934, 3935, 3936, 3937, 3938, 3939, 3940, 3941, 3942, 3943, 3944, 3945, 3946, 3947, 3948, 3949, 3950, 3951, 3952, 3953, 3954, 3955, 3956, 3957, 3958, 3959, 3960, 3961, 3962, 3963, 3964, 3965, 3966, 3967, 3968, 3969, 3970, 3971, 3972, 3973, 3974, 3975, 3976, 3977, 3978, 3979, 3980, 3981, 3982, 3983, 3984, 3985, 3986, 3987, 3988, 3989, 3990, 3991, 3992, 3993, 3994, 3995, 3996, 3997, 3998, 3999, 4000, 4001, 4002, 4003, 4004, 4005, 4006, 4007, 4008, 4009, 4010, 4011, 4012, 4013, 4014, 4015, 4016, 4017, 4018, 4019, 4020, 4021, 4022, 4023, 4024, 4025, 4026, 4027, 4028, 4029, 4030, 4031, 4032, 4033, 4034, 4035, 4036, 4037, 4038, 4039, 4040, 4041, 4042, 4043, 4044, 4045, 4046, 4047, 4048, 4049, 4050, 4051, 4052, 4053, 4054, 4055, 4056, 4057, 4058, 4059, 4060, 4061,





**RECORD OF TITLE
UNDER LAND TRANSFER ACT 2017
FREEHOLD
Search Copy**




R.W. Muir
Registrar-General
of Land

Identifier **376813**
Land Registration District **Wellington**
Date Issued 20 August 2010

Prior References
WN23C/209

Estate Fee Simple
Area 9.5424 hectares more or less
Legal Description Lot 8-9, 12 Deposited Plan 394192
Registered Owners
Grenada North Nominees Limited

Interests

Subject to Section 59 Land Act 1948

8516760.3 Consent Notice pursuant to Section 221 Resource Management Act 1991 - 20.8.2010 at 10:22 am

Subject to Section 241(2) Resource Management Act 1991 (affects DP 394192)

Subject to a (in gross) batter easement over Lot 8 DP 394192 marked BD, BE and over Lot 9 DP 394192 marked BB, BC both on DP 394192 in favour of the Wellington City Council created by Easement Instrument 8516760.7 - 20.8.2010 at 10:22 am

Subject to a right of way over Lot 12 DP 394192 marked BH on DP 394192 created by Easement Instrument 8516760.10 - 20.8.2010 at 10:22 am

Subject to an (in gross) electricity and telecommunications easement over Lot 9 DP 394192 marked BA, BB on DP 394192 in favour of Wellington Electricity Lines Limited created by Easement Instrument 8516760.11 - 20.8.2010 at 10:22 am

Proposed Easements

PURPOSE	SHOWN	SEV. TEN	DOM. TEN
RIGHT OF WAY	BH	LOT 12	LOT 13
RIGHT TO CONVEY WATER	AO	LOT 1	GRANTTEE
ELECTRICITY	AR	LOT 1	GRANTTEE
RIGHT TO CONVEY WATER	AS	LOT 2	GRANTTEE
BATTERY EASEMENT	BS	LOT 3	GRANTTEE
ELECTRICITY	BJ	LOT 3	GRANTTEE

Memorandum of Easements

PURPOSE	SHOWN	SEV. TEN	GRANTTEE
RIGHT OF WAY	AT	LOT 2	WELLINGTON CITY COUNCIL
	AV	LOT 16	WELLINGTON CITY COUNCIL
	AW	LOT 15	WELLINGTON CITY COUNCIL

Registered Proprietor
 The Wellington City Council, pursuant to the Resource Management Act 1991, on the 20th day of August 2007, subject to the grant of the Memorandum of Easement and subject to the amalgamation condition set out hereon.

Authorised Officer
 [Signature]
 Amalgamation Condition
 That lots 8, 9 & 12 hereon be held in the same Certificate of Title.
 New C.T. Allocated
 LOT 1 - C.T. 376809
 LOT 2 - C.T. 376809
 LOT 3 - C.T. 376809
 LOT 4 - C.T. 376811
 LOT 5 - C.T. 376811
 LOT 6 - C.T. 376811
 LOT 7 - C.T. 376811
 LOT 8 - C.T. 376811
 LOT 9 - C.T. 376811
 LOT 10 - C.T. 376811
 LOT 11 - C.T. 376811
 LOT 12 - C.T. 376811
 LOT 13 - C.T. 376811
 LOT 14 - C.T. 376811
 LOT 15 - C.T. 376811
 LOT 16 - C.T. 376811
 LOT 17 - C.T. 376811
 LOT 18 - C.T. 376811
 LOT 19 - C.T. 376811

Class of Survey = 1
Total Area 25.0715 ha.
Comprised in C.T. 376809, 376811, 376812, 376813, 376814, 376815, 376816, 376817, 376818, 376819, 376820, 376821, 376822, 376823, 376824, 376825, 376826, 376827, 376828, 376829, 376830, 376831, 376832, 376833, 376834, 376835, 376836, 376837, 376838, 376839, 376840, 376841, 376842, 376843, 376844, 376845, 376846, 376847, 376848, 376849, 376850, 376851, 376852, 376853, 376854, 376855, 376856, 376857, 376858, 376859, 376860, 376861, 376862, 376863, 376864, 376865, 376866, 376867, 376868, 376869, 376870, 376871, 376872, 376873, 376874, 376875, 376876, 376877, 376878, 376879, 376880, 376881, 376882, 376883, 376884, 376885, 376886, 376887, 376888, 376889, 376890, 376891, 376892, 376893, 376894, 376895, 376896, 376897, 376898, 376899, 376900, 376901, 376902, 376903, 376904, 376905, 376906, 376907, 376908, 376909, 376910, 376911, 376912, 376913, 376914, 376915, 376916, 376917, 376918, 376919, 376920, 376921, 376922, 376923, 376924, 376925, 376926, 376927, 376928, 376929, 376930, 376931, 376932, 376933, 376934, 376935, 376936, 376937, 376938, 376939, 376940, 376941, 376942, 376943, 376944, 376945, 376946, 376947, 376948, 376949, 376950, 376951, 376952, 376953, 376954, 376955, 376956, 376957, 376958, 376959, 376960, 376961, 376962, 376963, 376964, 376965, 376966, 376967, 376968, 376969, 376970, 376971, 376972, 376973, 376974, 376975, 376976, 376977, 376978, 376979, 376980, 376981, 376982, 376983, 376984, 376985, 376986, 376987, 376988, 376989, 376990, 376991, 376992, 376993, 376994, 376995, 376996, 376997, 376998, 376999, 377000.

Registered Proprietor
 The Wellington City Council, pursuant to the Resource Management Act 1991, on the 20th day of August 2007, subject to the grant of the Memorandum of Easement and subject to the amalgamation condition set out hereon.

Authorised Officer
 [Signature]
 Amalgamation Condition
 That lots 8, 9 & 12 hereon be held in the same Certificate of Title.
 New C.T. Allocated
 LOT 1 - C.T. 376809
 LOT 2 - C.T. 376809
 LOT 3 - C.T. 376809
 LOT 4 - C.T. 376811
 LOT 5 - C.T. 376811
 LOT 6 - C.T. 376811
 LOT 7 - C.T. 376811
 LOT 8 - C.T. 376811
 LOT 9 - C.T. 376811
 LOT 10 - C.T. 376811
 LOT 11 - C.T. 376811
 LOT 12 - C.T. 376811
 LOT 13 - C.T. 376811
 LOT 14 - C.T. 376811
 LOT 15 - C.T. 376811
 LOT 16 - C.T. 376811
 LOT 17 - C.T. 376811
 LOT 18 - C.T. 376811
 LOT 19 - C.T. 376811

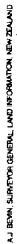
Class of Survey = 1
Total Area 25.0715 ha.
Comprised in C.T. 376809, 376811, 376812, 376813, 376814, 376815, 376816, 376817, 376818, 376819, 376820, 376821, 376822, 376823, 376824, 376825, 376826, 376827, 376828, 376829, 376830, 376831, 376832, 376833, 376834, 376835, 376836, 376837, 376838, 376839, 376840, 376841, 376842, 376843, 376844, 376845, 376846, 376847, 376848, 376849, 376850, 376851, 376852, 376853, 376854, 376855, 376856, 376857, 376858, 376859, 376860, 376861, 376862, 376863, 376864, 376865, 376866, 376867, 376868, 376869, 376870, 376871, 376872, 376873, 376874, 376875, 376876, 376877, 376878, 376879, 376880, 376881, 376882, 376883, 376884, 376885, 376886, 376887, 376888, 376889, 376890, 376891, 376892, 376893, 376894, 376895, 376896, 376897, 376898, 376899, 376900, 376901, 376902, 376903, 376904, 376905, 376906, 376907, 376908, 376909, 376910, 376911, 376912, 376913, 376914, 376915, 376916, 376917, 376918, 376919, 376920, 376921, 376922, 376923, 376924, 376925, 376926, 376927, 376928, 376929, 376930, 376931, 376932, 376933, 376934, 376935, 376936, 376937, 376938, 376939, 376940, 376941, 376942, 376943, 376944, 376945, 376946, 376947, 376948, 376949, 376950, 376951, 376952, 376953, 376954, 376955, 376956, 376957, 376958, 376959, 376960, 376961, 376962, 376963, 376964, 376965, 376966, 376967, 376968, 376969, 376970, 376971, 376972, 376973, 376974, 376975, 376976, 376977, 376978, 376979, 376980, 376981, 376982, 376983, 376984, 376985, 376986, 376987, 376988, 376989, 376990, 376991, 376992, 376993, 376994, 376995, 376996, 376997, 376998, 376999, 377000.

Approved as to Survey by Land Information NZ on
 04 / 10 / 2007

Deposited by Land Information NZ on
 20 / 10 / 2010

DP 394192







RECORD OF TITLE
UNDER LAND TRANSFER ACT 2017
FREEHOLD
Search Copy




R.W. Muir
Registrar-General
of Land

Identifier **376814**
Land Registration District **Wellington**
Date Issued 20 August 2010

Prior References
WN23C/209

Estate Fee Simple
Area 1.0318 hectares more or less
Legal Description Lot 10 Deposited Plan 394192
Registered Owners
Grenada North Nominees Limited

Interests

Subject to Section 59 Land Act 1948
8516760.3 Consent Notice pursuant to Section 221 Resource Management Act 1991 - 20.8.2010 at 10:22 am

TP: SHT: 10F3 SHTS.





RECORD OF TITLE
UNDER LAND TRANSFER ACT 2017
FREEHOLD
Search Copy




R.W. Muir
Registrar-General
of Land

Identifier **376815**
Land Registration District **Wellington**
Date Issued 20 August 2010

Prior References
WN23C/209

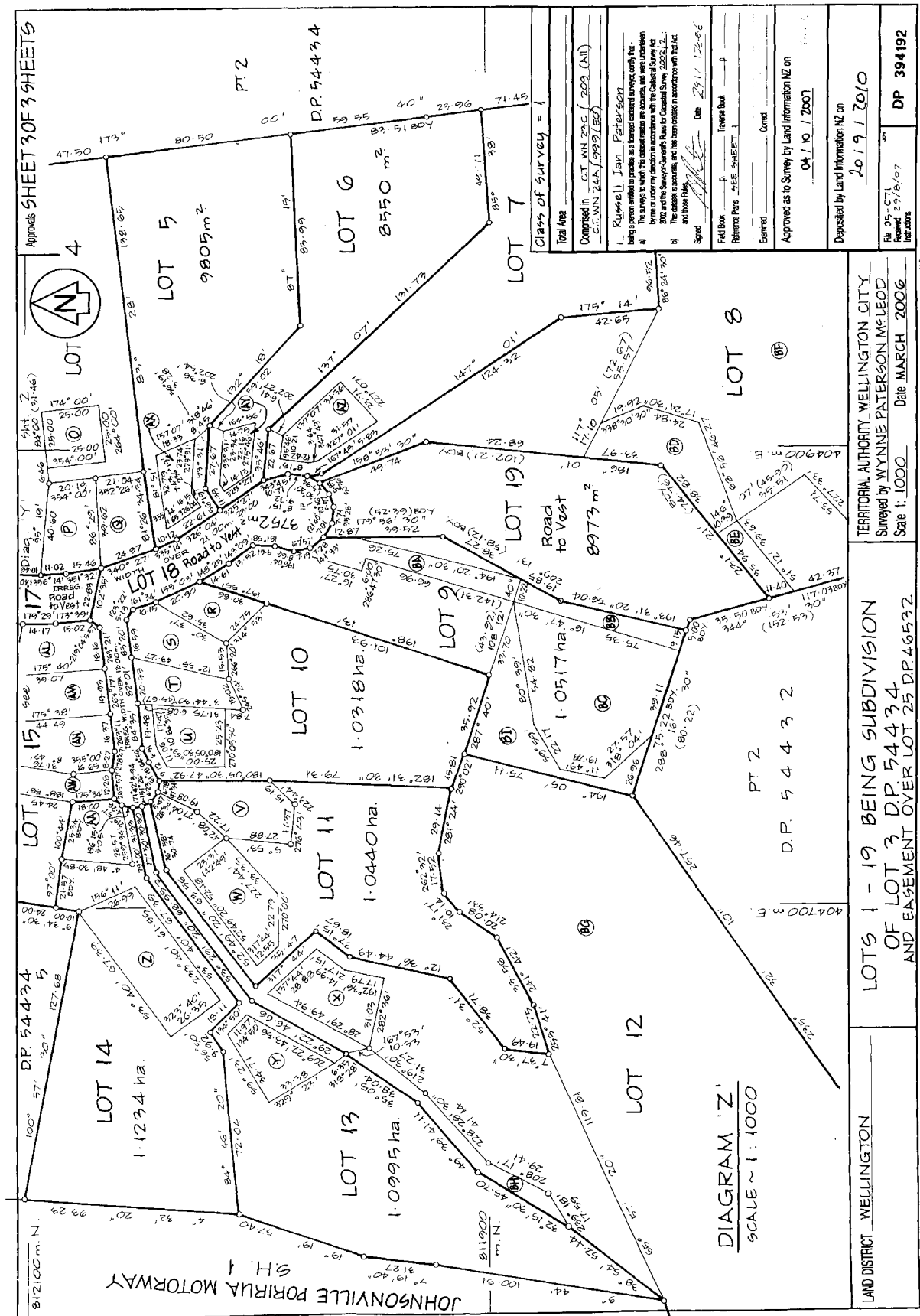
Estate Fee Simple
Area 1.0440 hectares more or less
Legal Description Lot 11 Deposited Plan 394192
Registered Owners
Grenada North Nominees Limited

Interests

Subject to Section 59 Land Act 1948
8516760.3 Consent Notice pursuant to Section 221 Resource Management Act 1991 - 20.8.2010 at 10:22 am

TP: SHT: 10F3 SHTS.







RECORD OF TITLE
UNDER LAND TRANSFER ACT 2017
FREEHOLD
Search Copy




R.W. Muir
Registrar-General
of Land

Identifier **376816**
Land Registration District **Wellington**
Date Issued 20 August 2010

Prior References
WN23C/209

Estate Fee Simple
Area 1.0995 hectares more or less
Legal Description Lot 13 Deposited Plan 394192
Registered Owners
Grenada North Nominees Limited

Interests

Subject to Section 59 Land Act 1948
8516760.3 Consent Notice pursuant to Section 221 Resource Management Act 1991 - 20.8.2010 at 10:22 am
Appurtenant hereto is a right of way created by Easement Instrument 8516760.10 - 20.8.2010 at 10:22 am

Proposed Easements

PURPOSE	SHOWN	SEV. TEN	DOM. TEN
RIGHT OF WAY	BH	LOT 12	LOT 13
RIGHT TO CONVEY WATER	AO	LOT 1	LOT 2
ELECTRICITY	AR	LOT 1	LOT 2
RIGHT TO CONVEY WATER	AS	LOT 1	LOT 2
BATTERY EASEMENT	BS	LOT 1	LOT 2
ELECTRICITY	BJ	LOT 1	LOT 2

Memorandum of Easements

PURPOSE	SHOWN	SEV. TEN	GRANTEE
RIGHT OF WAY	AT	LOT 2	WELLINGTON CITY COUNCIL
	AV	LOT 16	WELLINGTON CITY COUNCIL
	AW	LOT 15	WELLINGTON CITY COUNCIL

Notes:

- Note: Areas labelled A-B, D-J, M, N, P-T, V, AA-AF, AH-AM, and AP (Building exclusion areas), and areas labelled G-NZ (Chilling water locations), AY to be subject to a consent notice.
- * Areas labelled BB, BC, BD, BE, BF, BG, or BT are subject to a consent notice (Earthworks & bush protection).

Registered Proprietor

[Signature] Authorised Officer

Amalgamation Condition Certificate of Title

That Lots 8, 9 & 12 hereon be held in the same % B 829862.1

Class of Survey = 1

Total Area 25.0715 ha.

Comprising: CT VN 236 / 209 (All)

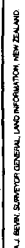
CT VN 245 / 992 (EO)

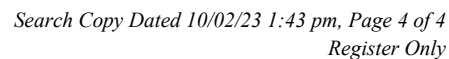
Surveyor: Russell Ian Paterson

Date: 26/11/2007

Field Book: p. 1

Reference: 603/2229, 2230, 2231, 2232, 2233, 2234, 2235, 2236, 2237, 2238, 2239, 2240, 2241, 2242, 2243, 2244, 2245, 2246, 2247, 2248, 2249, 2250, 2251, 2252, 2253, 2254, 2255, 2256, 2257, 2258, 2259, 2260, 2261, 2262, 2263, 2264, 2265, 2266, 2267, 2268, 2269, 2270, 2271, 2272, 2273, 2274, 2275, 2276, 2277, 2278, 2279, 2280, 2281, 2282, 2283, 2284, 2285, 2286, 2287, 2288, 2289, 2290, 2291, 2292, 2293, 2294, 2295, 2296, 2297, 2298, 2299, 2300, 2301, 2302, 2303, 2304, 2305, 2306, 2307, 2308, 2309, 2310, 2311, 2312, 2313, 2314, 2315, 2316, 2317, 2318, 2319, 2320, 2321, 2322, 2323, 2324, 2325, 2326, 2327, 2328, 2329, 2330, 2331, 2332, 2333, 2334, 2335, 2336, 2337, 2338, 2339, 2340, 2341, 2342, 2343, 2344, 2345, 2346, 2347, 2348, 2349, 2350, 2351, 2352, 2353, 2354, 2355, 2356, 2357, 2358, 2359, 2360, 2361, 2362, 2363, 2364, 2365, 2366, 2367, 2368, 2369, 2370, 2371, 2372, 2373, 2374, 2375, 2376, 2377, 2378, 2379, 2380, 2381, 2382, 2383, 2384, 2385, 2386, 2387, 2388, 2389, 2390, 2391, 2392, 2393, 2394, 2395, 2396, 2397, 2398, 2399, 2400, 2401, 2402, 2403, 2404, 2405, 2406, 2407, 2408, 2409, 2410, 2411, 2412, 2413, 2414, 2415, 2416, 2417, 2418, 2419, 2420, 2421, 2422, 2423, 2424, 2425, 2426, 2427, 2428, 2429, 2430, 2431, 2432, 2433, 2434, 2435, 2436, 2437, 2438, 2439, 2440, 2441, 2442, 2443, 2444, 2445, 2446, 2447, 2448, 2449, 2450, 2451, 2452, 2453, 2454, 2455, 2456, 2457, 2458, 2459, 2460, 2461, 2462, 2463, 2464, 2465, 2466, 2467, 2468, 2469, 2470, 2471, 2472, 2473, 2474, 2475, 2476, 2477, 2478, 2479, 2480, 2481, 2482, 2483, 2484, 2485, 2486, 2487, 2488, 2489, 2490, 2491, 2492, 2493, 2494, 2495, 2496, 2497, 2498, 2499, 2500, 2501, 2502, 2503, 2504, 2505, 2506, 2507, 2508, 2509, 2510, 2511, 2512, 2513, 2514, 2515, 2516, 2517, 2518, 2519, 2520, 2521, 2522, 2523, 2524, 2525, 2526, 2527, 2528, 2529, 2530, 2531, 2532, 2533, 2534, 2535, 2536, 2537, 2538, 2539, 2540, 2541, 2542, 2543, 2544, 2545, 2546, 2547, 2548, 2549, 2550, 2551, 2552, 2553, 2554, 2555, 2556, 2557, 2558, 2559, 2560, 2561, 2562, 2563, 2564, 2565, 2566, 2567, 2568, 2569, 2570, 2571, 2572, 2573, 2574, 2575, 2576, 2577, 2578, 2579, 2580, 2581, 2582, 2583, 2584, 2585, 2586, 2587, 2588, 2589, 2590, 2591, 2592, 2593, 2594, 2595, 2596, 2597, 2598, 2599, 2600, 2601, 2602, 2603, 2604, 2605, 2606, 2607, 2608, 2609, 2610, 2611, 2612, 2613, 2614, 2615, 2616, 2617, 2618, 2619, 2620, 2621, 2622, 2623, 2624, 2625, 2626, 2627, 2628, 2629, 2630, 2631, 2632, 2633, 2634, 2635, 2636, 2637, 2638, 2639, 2640, 2641, 2642, 2643, 2644, 2645, 2646, 2647, 2648, 2649, 2650, 2651, 2652, 2653, 2654, 2655, 2656, 2657, 2658, 2659, 2660, 2661, 2662, 2663, 2664, 2665, 2666, 2667, 2668, 2669, 2670, 2671, 2672, 2673, 2674, 2675, 2676, 2677, 2678, 2679, 2680, 2681, 2682, 2683, 2684, 2685, 2686, 2687, 2688, 2689, 2690, 2691, 2692, 2693, 2694, 2695, 2696, 2697, 2698, 2699, 2700, 2701, 2702, 2703, 2704, 2705, 2706, 2707, 2708, 2709, 2710, 2711, 2712, 2713, 2714, 2715, 2716, 2717, 2718, 2719, 2720, 2721, 2722, 2723, 2724, 2725, 2726, 2727, 2728, 2729, 2730, 2731, 2732, 2733, 2734, 2735, 2736, 2737, 2738, 2739, 2740, 2741, 2742, 2743, 2744, 2745, 2746, 2747, 2748, 2749, 2750, 2751, 2752, 2753, 2754, 2755, 2756, 2757, 2758, 2759, 2760, 2761, 2762, 2763, 2764, 2765, 2766, 2767, 2768, 2769, 2770, 2771, 2772, 2773, 2774, 2775, 2776, 2777, 2778, 2779, 2780, 2781, 2782, 2783, 2784, 2785, 2786, 2787, 2788, 2789, 2790, 2791, 2792, 2793, 2794, 2795, 2796, 2797, 2798, 2799, 2800, 2801, 2802, 2803, 2804, 2805, 2806, 2807, 2808, 2809, 2810, 2811, 2812, 2813, 2814, 2815, 2816, 2817, 2818, 2819, 2820, 2821, 2822, 2823, 2824, 2825, 2826, 2827, 2828, 2829, 2830, 2831, 2832, 2833, 2834, 2835, 2836, 2837, 2838, 2839, 2840, 2841, 2842, 2843, 2844, 2845, 2846, 2847, 2848, 2849, 2850, 2851, 2852, 2853, 2854, 2855, 2856, 2857, 2858, 2859, 2860, 2861, 2862, 2863, 2864, 2865, 2866, 2867, 2868, 2869, 2870, 2871, 2872, 2873, 2874, 2875, 2876, 2877, 2878, 2879, 2880, 2881, 2882, 2883, 2884, 2885, 2886, 2887, 2888, 2889, 2890, 2891, 2892, 2893, 2894, 2895, 2896, 2897, 2898, 2899, 2900, 2901, 2902, 2903, 2904, 2905, 2906, 2907, 2908, 2909, 2910, 2911, 2912, 2913, 2914, 2915, 2916, 2917, 2918, 2919, 2920, 2921, 2922, 2923, 2924, 2925, 2926, 2927, 2928, 2929, 2930, 2931, 2932, 2933, 2934, 2935, 2936, 2937, 2938, 2939, 2940, 2941, 2942, 2943, 2944, 2945, 2946, 2947, 2948, 2949, 2950, 2951, 2952, 2953, 2954, 2955, 2956, 2957, 2958, 2959, 2960, 2961, 2962, 2963, 2964, 2965, 2966, 2967, 2968, 2969, 2970, 2971, 2972, 2973, 2974, 2975, 2976, 2977, 2978, 2979, 2980, 2981, 2982, 2983, 2984, 2985, 2986, 2987, 2988, 2989, 2990, 2991, 2992, 2993, 2994, 2995, 2996, 2997, 2998, 2999, 3000, 3001, 3002, 3003, 3004, 3005, 3006, 3007, 3008, 3009, 3010, 3011, 3012, 3013, 3014, 3015, 3016, 3017, 3018, 3019, 3020, 3021, 3022, 3023, 3024, 3025, 3026, 3027, 3028, 3029, 3030, 3031, 3032, 3033, 3034, 3035, 3036, 3037, 3038, 3039, 3040, 3041, 3042, 3043, 3044, 3045, 3046, 3047, 3048, 3049, 3050, 3051, 3052, 3053, 3054, 3055, 3056, 3057, 3058, 3059, 3060, 3061, 3062, 3063, 3064, 3065, 3066, 3067, 3068, 3069, 3070, 3071, 3072, 3073, 3074, 3075, 3076, 3077, 3078, 3079, 3080, 3081, 3082, 3083, 3084, 3085, 3086, 3087, 3088, 3089, 3090, 3091, 3092, 3093, 3094, 3095, 3096, 3097, 3098, 3099, 3100, 3101, 3102, 3103, 3104, 3105, 3106, 3107, 3108, 3109, 3110, 3111, 3112, 3113, 3114, 3115, 3116, 3117, 3118, 3119, 3120, 3121, 3122, 3123, 3124, 3125, 3126, 3127, 3128, 3129, 3130, 3131, 3132, 3133, 3134, 3135, 3136, 3137, 3138, 3139, 3140, 3141, 3142, 3143, 3144, 3145, 3146, 3147, 3148, 3149, 3150, 3151, 3152, 3153, 3154, 3155, 3156, 3157, 3158, 3159, 3160, 3161, 3162, 3163, 3164, 3165, 3166, 3167, 3168, 3169, 3170, 3171, 3172, 3173, 3174, 3175, 3176, 3177, 3178, 3179, 3180, 3181, 3182, 3183, 3184, 3185, 3186, 3187, 3188, 3189, 3190, 3191, 3192, 3193, 3194, 3195, 3196, 3197, 3198, 3199, 3200, 3201, 3202, 3203, 3204, 3205, 3206, 3207, 3208, 3209, 3210, 3211, 3212, 3213, 3214, 3215, 3216, 3217, 3218, 3219, 3220, 3221, 3222, 3223, 3224, 3225, 3226, 3227, 3228, 3229, 3230, 3231, 3232, 3233, 3234, 3235, 3236, 3237, 3238, 3239, 3240, 3241, 3242, 3243, 3244, 3245, 3246, 3247, 3248, 3249, 3250, 3251, 3252, 3253, 3254, 3255, 3256, 3257, 3258, 3259, 3260, 3261, 3262, 3263, 3264, 3265, 3266, 3267, 3268, 3269, 3270, 3271, 3272, 3273, 3274, 3275, 3276, 3277, 3278, 3279, 3280, 3281, 3282, 3283, 3284, 3285, 3286, 3287, 3288, 3289, 3290, 3291, 3292, 3293, 3294, 3295, 3296, 3297, 3298, 3299, 3300, 3301, 3302, 3303, 3304, 3305, 3306, 3307, 3308, 3309, 3310, 3311, 3312, 3313, 3314, 3315, 3316, 3317, 3318, 3319, 3320, 3321, 3322, 3323, 3324, 3325, 3326, 3327, 3328, 3329, 3330, 3331, 3332, 3333, 3334, 3335, 3336, 3337, 3338, 3339, 3340, 3341, 3342, 3343, 3344, 3345, 3346, 3347, 3348, 3349, 3350, 3351, 3352, 3353, 3354, 3355, 3356, 3357, 3358, 3359, 3360, 3361, 3362, 3363, 3364, 3365, 3366, 3367, 3368, 3369, 3370, 3371, 3372, 3373, 3374, 3375, 3376, 3377, 3378, 3379, 3380, 3381, 3382, 3383, 3384, 3385, 3386, 3387, 3388, 3389, 3390, 3391, 3392, 3393, 3394, 3395, 3396, 3397, 3398, 3399, 3400, 3401, 3402, 3403, 3404, 3405, 3406, 3407, 3408, 3409, 3410, 3411, 3412, 3413, 3414, 3415, 3416, 3417, 3418, 3419, 3420, 3421, 3422, 3423, 3424, 3425, 3426, 3427, 3428, 3429, 3430, 3431, 3432, 3433, 3434, 3435, 3436, 3437, 3438, 3439, 3440, 3441, 3442, 3443, 3444, 3445, 3446, 3447, 3448, 3449, 3450, 3451, 3452, 3453, 3454, 3455, 3456, 3457, 3458, 3459, 3460, 3461, 3462, 3463, 3464, 3465, 3466, 3467, 3468, 3469, 3470, 3471, 3472, 3473, 3474, 3475, 3476, 3477, 3478, 3479, 3480, 3481, 3482, 3483, 3484, 3485, 3486, 3487, 3488, 3489, 3490, 3491, 3492, 3493, 3494, 3495, 3496, 3497, 3498, 3499, 3500, 3501, 3502, 3503, 3504, 3505, 3506, 3507, 3508, 3509, 3510, 3511, 3512, 3513, 3514, 3515, 3516, 3517, 3518, 3519, 3520, 3521, 3522, 3523, 3524, 3525, 3526, 3527, 3528, 3529, 3530, 3531, 3532, 3533, 3534, 3535, 3536, 3537, 3538, 3539, 3540, 3541, 3542, 3543, 3544, 3545, 3546, 3547, 3548, 3549, 3550, 3551, 3552, 3553, 3554, 3555, 3556, 3557, 3558, 3559, 3560, 3561, 3562, 3563, 3564, 3565, 3566, 3567, 3568, 3569, 3570, 3571, 3572, 3573, 3574, 3575, 3576, 3577, 3578, 3579, 3580, 3581, 3582, 3583, 3584, 3585, 3586, 3587, 3588, 3589, 3590, 3591, 3592, 3593, 3594, 3595, 3596, 3597, 3598, 3599, 3600, 3601, 3602, 3603, 3604, 3605, 3606, 3607, 3608, 3609, 3610, 3611, 3612, 3613, 3614, 3615, 3616, 3617, 3618, 3619, 3620, 3621, 3622, 3623, 3624, 3625, 3626, 3627, 3628, 3629, 3630, 3631, 3632, 3633, 3634, 3635, 3636, 3637, 3638, 3639, 3640, 3641, 3642, 3643, 3644, 3645, 3646, 3647, 3648, 3649, 3650, 3651, 3652, 3653, 3654, 3655, 3656, 3657, 3658, 3659, 3660, 3661, 3662, 3663, 3664, 3665, 3666, 3667, 3668, 3669, 3670, 3671, 3672, 3673, 3674, 3675, 3676, 3677, 3678, 3679, 3680, 3681, 3682, 3683, 3684, 3685, 3686, 3687, 3688, 3689, 3690, 3691, 3692, 3693, 3694, 3695, 3696, 3697, 3698, 3699, 3700, 3701, 3702, 3703, 3704, 3705, 3706, 3707, 3708, 3709, 3710, 3711, 3712, 3713, 3714, 3715, 3716, 3717, 3718, 3719, 3720, 3721, 3722, 3723, 3724, 3725, 3726, 3727, 3728, 3729, 3730, 3731, 3732, 3733, 3734, 3735, 3736, 3737, 3738, 3739, 3740, 3741, 3742, 3743, 3744, 3745, 3746, 3747, 3748, 3749, 3750, 3751, 3752, 3753, 3754, 3755, 3756, 3757, 3758, 3759, 3760, 3761, 3762, 3763, 3764, 3765, 3766, 3767, 3768, 3769, 3770, 3771, 3772, 3773, 3774, 3775, 3776, 3777, 3778, 3779, 3780, 3781, 3782, 3783, 3784, 3785, 3786, 3787, 3788, 3789, 3790, 3791, 3792, 3793, 3794, 3795, 3796, 3797, 3798, 3799, 3800, 3801, 3802, 3803, 3804, 3805, 3806, 3807, 3808, 3809, 3810, 3811, 3812, 3813, 3814, 3815, 3816, 3817, 3818, 3819, 3820, 3821, 3822, 3823, 3824, 3825, 3826, 3827, 3828, 3829, 3830, 3831, 3832, 3833, 3834, 3835, 3836, 3837, 3838, 3839, 3840, 3841, 3842, 3843, 3844, 3845, 3846, 3847, 3848, 3849, 3850, 3851, 3852, 3853, 3854, 3855, 3856, 3857, 3858, 3859, 3860, 3861, 3862, 3863, 3864, 3865, 3866, 3867, 3868, 3869, 3870, 3871, 3872, 3873, 3874, 3875, 3876, 3877, 3878, 3879, 3880, 3881, 3882, 3883, 3884, 3885, 3886, 3887, 3888, 3889, 3890, 3891, 3892, 3893, 3894, 3895, 3896, 3897, 3898, 3899, 3900, 3901, 3902, 3903, 3904, 3905, 3906, 3907, 3908, 3909, 3910, 3911, 3912, 3913, 3914, 3915, 3916, 3917, 3918, 3919, 3920, 3921, 3922, 3923, 3924, 3925, 3926, 3927, 3928, 3929, 3930, 3931, 3932, 3933, 3934, 3935, 3936, 3937, 3938, 3939, 3940, 3941, 3942, 3943, 3944, 3945, 3946, 3947, 3948, 3949, 3950, 3951, 3952, 3953, 3954, 3955, 3956, 3957, 3958, 3959, 3960, 3961, 3962, 3963, 3964, 3965, 3966, 3967, 3968, 3969, 3970, 3971, 3972, 3973, 3974, 3975, 3976, 3977, 3978, 3979, 3980, 3981, 3982, 3983, 3984, 3985, 3986, 3987, 3988, 3989, 3990, 3991, 3992, 3993, 3994, 3995, 3996, 3997, 3998, 3999, 4000, 4001, 4002, 4003, 4004, 4005, 4006, 4007, 4008, 4009, 4010, 4011, 4012, 4013, 4014, 4015, 4016, 4017, 4018, 4019, 4020, 4021, 4022, 4023, 4024, 4025, 4026, 4027, 4028, 4029, 4030, 4031, 4032, 4033, 4034, 4035, 4036, 4037, 4038, 4039, 4040, 4041, 4042, 4043, 4044, 4045, 4046, 4047, 4048, 4049, 4050, 4051, 4052, 4053, 4054, 4055, 4056, 4057, 4058, 4059, 4060, 4061, 4062, 4063, 4064, 4065, 4066, 4067, 4068, 4069, 4070, 4071, 4072, 4073, 4074, 4075, 4076, 4077, 4078, 4079, 4080, 4081, 4082, 4083, 4084, 4085, 4086, 4087, 4088, 4089, 4090, 4091, 4092, 4093, 4094, 4095, 4096, 4097, 4098, 4099, 4100, 4101, 4102, 4103, 4104, 4105, 4106, 4107, 4108, 4109, 4







RECORD OF TITLE
UNDER LAND TRANSFER ACT 2017
FREEHOLD
Search Copy




R.W. Muir
Registrar-General
of Land

Identifier **376817**
Land Registration District **Wellington**
Date Issued 20 August 2010

Prior References
WN23C/209

Estate Fee Simple
Area 1.1234 hectares more or less
Legal Description Lot 14 Deposited Plan 394192
Registered Owners
Grenada North Nominees Limited

Interests

Subject to Section 59 Land Act 1948
8516760.3 Consent Notice pursuant to Section 221 Resource Management Act 1991 - 20.8.2010 at 10:22 am

Proposed Easements

PURPOSE	SHOWN	SEV. TEN	DOM. TEN
RIGHT OF WAY	BH	LOT 12	LOT 13
RIGHT TO CONVEY WATER	AO	LOT 1	LOT 2
ELECTRICITY	AR	LOT 1	LOT 2
RIGHT TO CONVEY WATER	AS	LOT 1	LOT 2
BATTERY EASEMENT	BS	LOT 1	LOT 2
ELECTRICITY	BJ	LOT 1	LOT 2

Memorandum of Easements

PURPOSE	SHOWN	SEV. TEN	GRANTEE
RIGHT OF WAY	AT	LOT 2	WELLINGTON CITY COUNCIL
	AV	LOT 16	WELLINGTON CITY COUNCIL
	AW	LOT 15	WELLINGTON CITY COUNCIL

Notes:

- Note: Areas labelled A-B, D-J, M, N, P-T, V, AA-AF, AH-AM, and AP (Building exclusion areas), and areas labelled G, H, I, J, K, L, M, N, O, P, Q, R, S, T, U, V, W, X, Y, Z, and AA, AB, AC, AD, AE, AF, AG, AH, AI, AJ, AK, AL, AM, AN, AO, AP, AQ, AR, AS, AT, AU, AV, AW, AX, AY, AZ, BA, BB, BC, BD, BE, BF, BG, BH, BI, BJ, BK, BL, BM, BN, BO, BP, BQ, BR, BS, BT, BU, BV, BW, BX, BY, BZ, CA, CB, CC, CD, CE, CF, CG, CH, CI, CJ, CK, CL, CM, CN, CO, CP, CQ, CR, CS, CT, CU, CV, CW, CX, CY, CZ, DA, DB, DC, DD, DE, DF, DG, DH, DI, DJ, DK, DL, DM, DN, DO, DP, DQ, DR, DS, DT, DU, DV, DW, DX, DY, DZ, EA, EB, EC, ED, EE, EF, EG, EH, EI, EJ, EK, EL, EM, EN, EO, EP, EQ, ER, ES, ET, EU, EV, EW, EX, EY, EZ, FA, FB, FC, FD, FE, FF, FG, FH, FI, FJ, FK, FL, FM, FN, FO, FP, FQ, FR, FS, FT, FU, FV, FW, FX, FY, FZ, GA, GB, GC, GD, GE, GF, GG, GH, GI, GJ, GK, GL, GM, GN, GO, GP, GQ, GR, GS, GT, GU, GV, GW, GX, GY, GZ, HA, HB, HC, HD, HE, HF, HG, HH, HI, HJ, HK, HL, HM, HN, HO, HP, HQ, HR, HS, HT, HU, HV, HW, HX, HY, HZ, IA, IB, IC, ID, IE, IF, IG, IH, II, IJ, IK, IL, IM, IN, IO, IP, IQ, IR, IS, IT, IU, IV, IW, IX, IY, IZ, JA, JB, JC, JD, JE, JF, JG, JH, JI, JJ, JK, JL, JM, JN, JO, JP, JQ, JR, JS, JT, JU, JV, JW, JX, JY, JZ, KA, KB, KC, KD, KE, KF, KG, KH, KI, KJ, KK, KL, KM, KN, KO, KP, KQ, KR, KS, KT, KU, KV, KW, KX, KY, KZ, LA, LB, LC, LD, LE, LF, LG, LH, LI, LJ, LK, LL, LM, LN, LO, LP, LQ, LR, LS, LT, LU, LV, LW, LX, LY, LZ, MA, MB, MC, MD, ME, MF, MG, MH, MI, MJ, MK, ML, MM, MN, MO, MP, MQ, MR, MS, MT, MU, MV, MW, MX, MY, MZ, NA, NB, NC, ND, NE, NF, NG, NH, NI, NJ, NK, NL, NM, NN, NO, NP, NQ, NR, NS, NT, NU, NV, NW, NX, NY, NZ, OA, OB, OC, OD, OE, OF, OG, OH, OI, OJ, OK, OL, OM, ON, OO, OP, OQ, OR, OS, OT, OU, OV, OW, OX, OY, OZ, PA, PB, PC, PD, PE, PF, PG, PH, PI, PJ, PK, PL, PM, PN, PO, PP, PQ, PR, PS, PT, PU, PV, PW, PX, PY, PZ, QA, QB, QC, QD, QE, QF, QG, QH, QI, QJ, QK, QL, QM, QN, QO, QP, QQ, QR, QS, QT, QU, QV, QW, QX, QY, QZ, RA, RB, RC, RD, RE, RF, RG, RH, RI, RJ, RK, RL, RM, RN, RO, RP, RQ, RR, RS, RT, RU, RV, RW, RX, RY, RZ, SA, SB, SC, SD, SE, SF, SG, SH, SI, SJ, SK, SL, SM, SN, SO, SP, SQ, SR, SS, ST, SU, SV, SW, SX, SY, SZ, TA, TB, TC, TD, TE, TF, TG, TH, TI, TJ, TK, TL, TM, TN, TO, TP, TQ, TR, TS, TT, TU, TV, TW, TX, TY, TZ, UA, UB, UC, UD, UE, UF, UG, UH, UI, UJ, UK, UL, UM, UN, UO, UP, UQ, UR, US, UT, UY, UZ, VA, VB, VC, VD, VE, VF, VG, VH, VI, VJ, VK, VL, VM, VN, VO, VP, VQ, VR, VS, VT, VU, VV, VW, VX, VY, VZ, WA, WB, WC, WD, WE, WF, WG, WH, WI, WJ, WK, WL, WM, WN, WO, WP, WQ, WR, WS, WT, WU, WV, WW, WX, WY, WZ, XA, XB, XC, XD, XE, XF, XG, XH, XI, XJ, XK, XL, XM, XN, XO, XP, XQ, XR, XS, XT, XU, XV, XW, XX, XY, XZ, YA, YB, YC, YD, YE, YF, YG, YH, YI, YJ, YK, YL, YM, YN, YO, YP, YQ, YR, YS, YT, YU, YV, YW, YX, YY, YZ, ZA, ZB, ZC, ZD, ZE, ZF, ZG, ZH, ZI, ZJ, ZK, ZL, ZM, ZN, ZO, ZP, ZQ, ZR, ZS, ZT, ZU, ZV, ZW, ZX, ZY, ZZ.

Registered Proprietor

Authorised Officer

Amalgamation Condition

Class of Survey

Total Area

Comprising

Surveyor

Field Book

Reference Plans

Examined

Approved as to Survey by Land Information NZ on

Deposited by Land Information NZ on

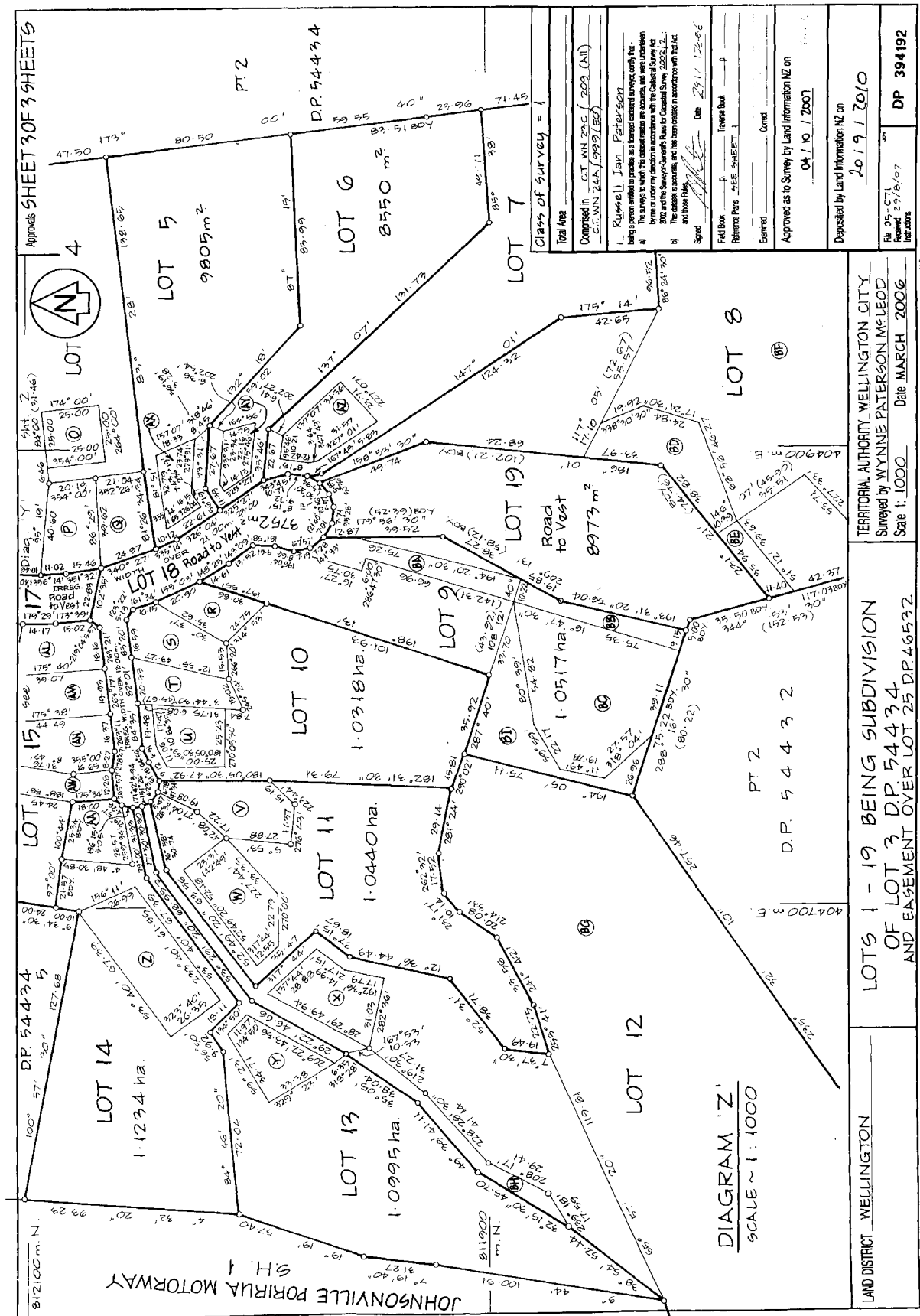
Surveyed by

Scale

Date

TP: SHT 1 OF 3 SHTS.







RECORD OF TITLE
UNDER LAND TRANSFER ACT 2017
FREEHOLD
Search Copy




R.W. Muir
Registrar-General
of Land

Identifier **376818**
Land Registration District **Wellington**
Date Issued 20 August 2010

Prior References
WN23C/209

Estate Fee Simple
Area 9206 square metres more or less
Legal Description Lot 15 Deposited Plan 394192
Registered Owners
Grenada North Nominees Limited

Interests

Subject to Section 59 Land Act 1948

8516760.3 Consent Notice pursuant to Section 221 Resource Management Act 1991 - 20.8.2010 at 10:22 am

Subject to a right (in gross) of way over part marked AW on DP 394192 in favour of the Wellington City Council created by Easement Instrument 8516760.6 - 20.8.2010 at 10:22 am

The easements created by Easement Instrument 8516760.6 are subject to Section 243 (a) Resource Management Act 1991

Proposed Easements

PURPOSE	SHOWN	SEV. TEN	DOM. TEN
RIGHT OF WAY	BH	LOT 12	LOT 13
RIGHT TO CONVEY WATER	AO	LOT 1	LOT 2
ELECTRICITY	AR	LOT 1	LOT 2
RIGHT TO CONVEY WATER	AS	LOT 1	LOT 2
BATTERY EASEMENT	BS	LOT 1	LOT 2
ELECTRICITY	BJ	LOT 1	LOT 2

Memorandum of Easements

PURPOSE	SHOWN	SEV. TEN	GRANTEE
RIGHT OF WAY	AT	LOT 2	WELLINGTON CITY COUNCIL
	AV	LOT 16	LOT 15
	AW	LOT 15	LOT 14

Notes:

- Note: Areas labelled A-B, D-J, M, N, P-T, V, AA-AF, AH-AM, and AP (Building exclusion areas), and areas labelled G-NZ (Chilling water locations), AY to be subject to a consent notice.
- * Areas labelled BB, BC, BD, BE, BF, BG, or BT are subject to a consent notice (Earthworks & bush protection).

Registered Proprietor

[Signature] Authorised Officer

Amalgamation Condition

That lots 8, 9 & 12 hereon be held in the same Certificate of Title.

New C.O.T. Allocated

LOT 1 - CT 376809
LOT 2 - CT 376809
LOT 3 - CT 376810
LOT 4 - CT 376811
LOT 5 - CT 376812
LOT 6 - CT 376813
LOT 7 - CT 376814
LOT 8 - CT 376815
LOT 9 - CT 376816
LOT 10 - CT 376817
LOT 11 - CT 376818
LOT 12 - CT 376819
LOT 13 - CT 376820
LOT 14 - CT 376821
LOT 15 - CT 376822
LOT 16 - CT 376823
LOT 17 - CT 376824
LOT 18 - CT 376825
LOT 19 - CT 376826

Class of Survey = 1

Total Area 25.0715 ha.

Comprised in CT 376827 / 209 (All)

CT 376827 / 209 (All)

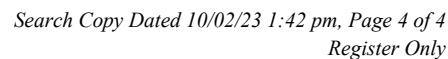
Surveyed by Russell Ian Paterson

Date 26/11/2007

Field Book p. 1

Reference Plans 600/2229, 2230/2231, 2232/2233, 2234/2235, 2236/2237, 2238/2239, 2240/2241, 2242/2243, 2244/2245, 2246/2247, 2248/2249, 2250/2251, 2252/2253, 2254/2255, 2256/2257, 2258/2259, 2260/2261, 2262/2263, 2264/2265, 2266/2267, 2268/2269, 2270/2271, 2272/2273, 2274/2275, 2276/2277, 2278/2279, 2280/2281, 2282/2283, 2284/2285, 2286/2287, 2288/2289, 2290/2291, 2292/2293, 2294/2295, 2296/2297, 2298/2299, 2300/2301, 2302/2303, 2304/2305, 2306/2307, 2308/2309, 2310/2311, 2312/2313, 2314/2315, 2316/2317, 2318/2319, 2320/2321, 2322/2323, 2324/2325, 2326/2327, 2328/2329, 2330/2331, 2332/2333, 2334/2335, 2336/2337, 2338/2339, 2340/2341, 2342/2343, 2344/2345, 2346/2347, 2348/2349, 2350/2351, 2352/2353, 2354/2355, 2356/2357, 2358/2359, 2360/2361, 2362/2363, 2364/2365, 2366/2367, 2368/2369, 2370/2371, 2372/2373, 2374/2375, 2376/2377, 2378/2379, 2380/2381, 2382/2383, 2384/2385, 2386/2387, 2388/2389, 2390/2391, 2392/2393, 2394/2395, 2396/2397, 2398/2399, 2400/2401, 2402/2403, 2404/2405, 2406/2407, 2408/2409, 2410/2411, 2412/2413, 2414/2415, 2416/2417, 2418/2419, 2420/2421, 2422/2423, 2424/2425, 2426/2427, 2428/2429, 2430/2431, 2432/2433, 2434/2435, 2436/2437, 2438/2439, 2440/2441, 2442/2443, 2444/2445, 2446/2447, 2448/2449, 2450/2451, 2452/2453, 2454/2455, 2456/2457, 2458/2459, 2460/2461, 2462/2463, 2464/2465, 2466/2467, 2468/2469, 2470/2471, 2472/2473, 2474/2475, 2476/2477, 2478/2479, 2480/2481, 2482/2483, 2484/2485, 2486/2487, 2488/2489, 2490/2491, 2492/2493, 2494/2495, 2496/2497, 2498/2499, 2500/2501, 2502/2503, 2504/2505, 2506/2507, 2508/2509, 2510/2511, 2512/2513, 2514/2515, 2516/2517, 2518/2519, 2520/2521, 2522/2523, 2524/2525, 2526/2527, 2528/2529, 2530/2531, 2532/2533, 2534/2535, 2536/2537, 2538/2539, 2540/2541, 2542/2543, 2544/2545, 2546/2547, 2548/2549, 2550/2551, 2552/2553, 2554/2555, 2556/2557, 2558/2559, 2560/2561, 2562/2563, 2564/2565, 2566/2567, 2568/2569, 2570/2571, 2572/2573, 2574/2575, 2576/2577, 2578/2579, 2580/2581, 2582/2583, 2584/2585, 2586/2587, 2588/2589, 2590/2591, 2592/2593, 2594/2595, 2596/2597, 2598/2599, 2600/2601, 2602/2603, 2604/2605, 2606/2607, 2608/2609, 2610/2611, 2612/2613, 2614/2615, 2616/2617, 2618/2619, 2620/2621, 2622/2623, 2624/2625, 2626/2627, 2628/2629, 2630/2631, 2632/2633, 2634/2635, 2636/2637, 2638/2639, 2640/2641, 2642/2643, 2644/2645, 2646/2647, 2648/2649, 2650/2651, 2652/2653, 2654/2655, 2656/2657, 2658/2659, 2660/2661, 2662/2663, 2664/2665, 2666/2667, 2668/2669, 2670/2671, 2672/2673, 2674/2675, 2676/2677, 2678/2679, 2680/2681, 2682/2683, 2684/2685, 2686/2687, 2688/2689, 2690/2691, 2692/2693, 2694/2695, 2696/2697, 2698/2699, 2700/2701, 2702/2703, 2704/2705, 2706/2707, 2708/2709, 2710/2711, 2712/2713, 2714/2715, 2716/2717, 2718/2719, 2720/2721, 2722/2723, 2724/2725, 2726/2727, 2728/2729, 2730/2731, 2732/2733, 2734/2735, 2736/2737, 2738/2739, 2740/2741, 2742/2743, 2744/2745, 2746/2747, 2748/2749, 2750/2751, 2752/2753, 2754/2755, 2756/2757, 2758/2759, 2760/2761, 2762/2763, 2764/2765, 2766/2767, 2768/2769, 2770/2771, 2772/2773, 2774/2775, 2776/2777, 2778/2779, 2780/2781, 2782/2783, 2784/2785, 2786/2787, 2788/2789, 2790/2791, 2792/2793, 2794/2795, 2796/2797, 2798/2799, 2800/2801, 2802/2803, 2804/2805, 2806/2807, 2808/2809, 2810/2811, 2812/2813, 2814/2815, 2816/2817, 2818/2819, 2820/2821, 2822/2823, 2824/2825, 2826/2827, 2828/2829, 2830/2831, 2832/2833, 2834/2835, 2836/2837, 2838/2839, 2840/2841, 2842/2843, 2844/2845, 2846/2847, 2848/2849, 2850/2851, 2852/2853, 2854/2855, 2856/2857, 2858/2859, 2860/2861, 2862/2863, 2864/2865, 2866/2867, 2868/2869, 2870/2871, 2872/2873, 2874/2875, 2876/2877, 2878/2879, 2880/2881, 2882/2883, 2884/2885, 2886/2887, 2888/2889, 2890/2891, 2892/2893, 2894/2895, 2896/2897, 2898/2899, 2900/2901, 2902/2903, 2904/2905, 2906/2907, 2908/2909, 2910/2911, 2912/2913, 2914/2915, 2916/2917, 2918/2919, 2920/2921, 2922/2923, 2924/2925, 2926/2927, 2928/2929, 2930/2931, 2932/2933, 2934/2935, 2936/2937, 2938/2939, 2940/2941, 2942/2943, 2944/2945, 2946/2947, 2948/2949, 2950/2951, 2952/2953, 2954/2955, 2956/2957, 2958/2959, 2960/2961, 2962/2963, 2964/2965, 2966/2967, 2968/2969, 2970/2971, 2972/2973, 2974/2975, 2976/2977, 2978/2979, 2980/2981, 2982/2983, 2984/2985, 2986/2987, 2988/2989, 2990/2991, 2992/2993, 2994/2995, 2996/2997, 2998/2999, 3000/3001, 3002/3003, 3004/3005, 3006/3007, 3008/3009, 3010/3011, 3012/3013, 3014/3015, 3016/3017, 3018/3019, 3020/3021, 3022/3023, 3024/3025, 3026/3027, 3028/3029, 3030/3031, 3032/3033, 3034/3035, 3036/3037, 3038/3039, 3040/3041, 3042/3043, 3044/3045, 3046/3047, 3048/3049, 3050/3051, 3052/3053, 3054/3055, 3056/3057, 3058/3059, 3060/3061, 3062/3063, 3064/3065, 3066/3067, 3068/3069, 3070/3071, 3072/3073, 3074/3075, 3076/3077, 3078/3079, 3080/3081, 3082/3083, 3084/3085, 3086/3087, 3088/3089, 3090/3091, 3092/3093, 3094/3095, 3096/3097, 3098/3099, 3100/3101, 3102/3103, 3104/3105, 3106/3107, 3108/3109, 3110/3111, 3112/3113, 3114/3115, 3116/3117, 3118/3119, 3120/3121, 3122/3123, 3124/3125, 3126/3127, 3128/3129, 3130/3131, 3132/3133, 3134/3135, 3136/3137, 3138/3139, 3140/3141, 3142/3143, 3144/3145, 3146/3147, 3148/3149, 3150/3151, 3152/3153, 3154/3155, 3156/3157, 3158/3159, 3160/3161, 3162/3163, 3164/3165, 3166/3167, 3168/3169, 3170/3171, 3172/3173, 3174/3175, 3176/3177, 3178/3179, 3180/3181, 3182/3183, 3184/3185, 3186/3187, 3188/3189, 3190/3191, 3192/3193, 3194/3195, 3196/3197, 3198/3199, 3200/3201, 3202/3203, 3204/3205, 3206/3207, 3208/3209, 3210/3211, 3212/3213, 3214/3215, 3216/3217, 3218/3219, 3220/3221, 3222/3223, 3224/3225, 3226/3227, 3228/3229, 3230/3231, 3232/3233, 3234/3235, 3236/3237, 3238/3239, 3240/3241, 3242/3243, 3244/3245, 3246/3247, 3248/3249, 3250/3251, 3252/3253, 3254/3255, 3256/3257, 3258/3259, 3260/3261, 3262/3263, 3264/3265, 3266/3267, 3268/3269, 3270/3271, 3272/3273, 3274/3275, 3276/3277, 3278/3279, 3280/3281, 3282/3283, 3284/3285, 3286/3287, 3288/3289, 3290/3291, 3292/3293, 3294/3295, 3296/3297, 3298/3299, 3300/3301, 3302/3303, 3304/3305, 3306/3307, 3308/3309, 3310/3311, 3312/3313, 3314/3315, 3316/3317, 3318/3319, 3320/3321, 3322/3323, 3324/3325, 3326/3327, 3328/3329, 3330/3331, 3332/3333, 3334/3335, 3336/3337, 3338/3339, 3340/3341, 3342/3343, 3344/3345, 3346/3347, 3348/3349, 3350/3351, 3352/3353, 3354/3355, 3356/3357, 3358/3359, 3360/3361, 3362/3363, 3364/3365, 3366/3367, 3368/3369, 3370/3371, 3372/3373, 3374/3375, 3376/3377, 3378/3379, 3380/3381, 3382/3383, 3384/3385, 3386/3387, 3388/3389, 3390/3391, 3392/3393, 3394/3395, 3396/3397, 3398/3399, 3400/3401, 3402/3403, 3404/3405, 3406/3407, 3408/3409, 3410/3411, 3412/3413, 3414/3415, 3416/3417, 3418/3419, 3420/3421, 3422/3423, 3424/3425, 3426/3427, 3428/3429, 3430/3431, 3432/3433, 3434/3435, 3436/3437, 3438/3439, 3440/3441, 3442/3443, 3444/3445, 3446/3447, 3448/3449, 3450/3451, 3452/3453, 3454/3455, 3456/3457, 3458/3459, 3460/3461, 3462/3463, 3464/3465, 3466/3467, 3468/3469, 3470/3471, 3472/3473, 3474/3475, 3476/3477, 3478/3479, 3480/3481, 3482/3483, 3484/3485, 3486/3487, 3488/3489, 3490/3491, 3492/3493, 3494/3495, 3496/3497, 3498/3499, 3500/3501, 3502/3503, 3504/3505, 3506/3507, 3508/3509, 3510/3511, 3512/3513, 3514/3515, 3516/3517, 3518/3519, 3520/3521, 3522/3523, 3524/3525, 3526/3527, 3528/3529, 3530/3531, 3532/3533, 3534/3535, 3536/3537, 3538/3539, 3540/3541, 3542/3543, 3544/3545, 3546/3547, 3548/3549, 3550/3551, 3552/3553, 3554/3555, 3556/3557, 3558/3559, 3560/3561, 3562/3563, 3564/3565, 3566/3567, 3568/3569, 3570/3571, 3572/3573, 3574/3575, 3576/3577, 3578/3579, 3580/3581, 3582/3583, 3584/3585, 3586/3587, 3588/3589, 3590/3591, 3592/3593, 3594/3595, 3596/3597, 3598/3599, 3600/3601, 3602/3603, 3604/3605, 3606/3607, 3608/3609, 3610/3611, 3612/3613, 3614/3615, 3616/3617, 3618/3619, 3620/3621, 3622/3623, 3624/3625, 3626/3627, 3628/3629, 3630/3631, 3632/3633, 3634/3635, 3636/3637, 3638/3639, 3640/3641, 3642/3643, 3644/3645, 3646/3647, 3648/3649, 3650/3651, 3652/3653, 3654/3655, 3656/3657, 3658/3659, 3660/3661, 3662/3663, 3664/3665, 3666/3667, 3668/3669, 3670/3671, 3672/3673, 3674/3675, 3676/3677, 3678/3679, 3680/3681, 3682/3683, 3684/3685, 3686/3687, 3688/3689, 3690/3691, 3692/3693, 3694/3695, 3696/3697, 3698/3699, 3700/3701, 3702/3703, 3704/3705, 3706/3707, 3708/3709, 3710/3711, 3712/3713, 3714/3715, 3716/3717, 3718/3719, 3720/3721, 3722/3723, 3724/3725, 3726/3727, 3728/3729, 3730/3731, 3732/3733, 3734/3735, 3736/3737, 3738/3739, 3740/3741, 3742/3743, 3744/3745, 3746/3747, 3748/3749, 3750/3751, 3752/3753, 3754/3755, 3756/3757, 3758/3759, 3760/3761, 3762/3763, 3764/3765, 3766/3767, 3768/3769, 3770/3771, 3772/3773, 3774/3775, 3776/3777, 3778/3779, 3780/3781, 3782/3783, 3784/3785, 3786/3787, 3788/3789, 3790/3791, 3792/3793, 3794/3795, 3796/3797, 3798/3799, 3800/3801, 3802/3803, 3804/3805, 3806/3807, 3808/3809, 3810/3811, 3812/3813, 3814/3815, 3816/3817, 3818/3819, 3820/3821, 3822/3823, 3824/3825, 3826/3827, 3828/3829, 3830/3831, 3832/3833, 3834/3835, 3836/3837, 3838/3839, 3840/3841, 3842/3843, 3844/3845, 3846/3847, 3848/3849, 3850/3851, 3852/3853, 3854/3855, 3856/3857, 3858/3859, 3860/3861, 3862/3863, 3864/3865, 3866/3867, 3868/3869, 3870/3871, 3872/3873, 3874/3875, 3876/3877, 3878/3879, 3880/3881, 3882/3883, 3884/3885, 3886/3887, 3888/3889, 3890/3891, 3892/3893, 3894/3895, 3896/3897, 3898/3899, 3900/3901, 3902/3903, 3904/3905, 3906/3907, 3908/3909, 3910/3911, 3912/3913, 3914/3915, 3916/3917, 3918/3919, 3920/3921, 3922/3923, 3924/3925, 3926/3927, 3928/3929, 3930/3931, 3932/3933, 3934/3935, 3936/3937, 3938/3939, 3940/3941, 3942/3943, 3944/3945, 3946/3947, 3948/3949, 3950/3951, 3952/3953, 3954/3955, 3956/3957, 3958/3959, 3960/3961, 3962/3963, 3964/3965, 3966/3967, 3968/3969, 3970/3971, 3972/3973, 3974/3975, 3976/3977, 3978/3979, 3980/3981, 3982/3983, 3984/3985, 3986/3987, 3988/3989, 3990/3991, 3992/3993, 3994/3995, 3996/3997, 3998/3999, 4000/4001, 4002/4003, 4004/4005, 4006/4007, 4008/4009, 4010/4011, 4012/4013, 4014/4015, 4016/4017, 4018/4019, 4020/4021, 4022/4023, 4024/4025, 4026/4027, 4028/4029, 4030/4031, 4032/4033, 4034/4035, 4036/4037, 4038/4039, 4040/4041, 4042/4043, 4044/4045, 4046/4047, 4048/4049, 4050/4051, 4052/4053, 4054/4055, 4056/4057, 4058/4059, 4060/4061, 4062/4063, 4064/4065, 4066/4067, 4068/4069, 4070/4071, 4072/4073, 4074/4075, 4076/4077, 4078/4079, 4080/4081, 4082/4083, 4084/4085, 4086/4087, 4088/4089, 4090/4091, 4092/4093, 4094/4095, 4096/4097, 4098/4099, 4100/4101, 4102/4103, 4104/4105, 4106/4107, 4108/4109, 4110/4111, 4112/4113, 4114/4115, 4116/4117, 4118/4119, 4120/4121, 4122/4123, 4124/4125, 4126/4127, 4128/4129, 4130/4131, 4132/4133, 4134/4135, 4136/4137, 4138/4139, 4140/4141, 4142/4143, 4144/4145, 4146/4147, 4148/4149, 4150/4151, 4152/4153, 4154/4155, 4156/4157, 4158/4159, 4160/4161, 4162/4163, 4164/4165, 4166/4167, 4168/4169, 4170/4171, 4172/4173, 4174/4175, 4176/4177, 4178/4179, 4180/4181, 4182/4183, 4184/4185, 4186/4187, 4188/4189, 4190/4191, 4192/4193, 4194/4195, 4196/4197, 4198/4199, 4200/4201, 4202/4203, 4204/4205, 4206/4207, 4208/4209, 4210/4211, 4212/4213, 4214/4215, 4216/4217, 4218/4219, 4220/4221, 4222/4223, 4224/4225, 4226/4227, 422







RECORD OF TITLE
UNDER LAND TRANSFER ACT 2017
FREEHOLD
Search Copy




R.W. Muir
Registrar-General
of Land

Identifier **376819**
Land Registration District **Wellington**
Date Issued 20 August 2010

Prior References
WN23C/209

Estate Fee Simple
Area 1.4134 hectares more or less
Legal Description Lot 16 Deposited Plan 394192
Registered Owners
Grenada North Nominees Limited

Interests

Subject to Section 59 Land Act 1948

8516760.3 Consent Notice pursuant to Section 221 Resource Management Act 1991 - 20.8.2010 at 10:22 am

Subject to a right (in gross) of way over part marked AV on DP 394192 in favour of the Wellington City Council created by Easement Instrument 8516760.6 - 20.8.2010 at 10:22 am

The easements created by Easement Instrument 8516760.6 are subject to Section 243 (a) Resource Management Act 1991

Proposed Easements

PURPOSE	SHOWN	SEV. TEN	DOM. TEN
RIGHT OF WAY	BH	LOT 12	LOT 13
RIGHT TO CONVEY WATER	AO	LOT 1	GRANTEE
ELECTRICITY	AR	LOT 1	VECTOR LIMITED
RIGHT TO CONVEY WATER	AS	LOT 2	WELLINGTON CITY COUNCIL
BATTERY EASEMENT	BS	LOT 3	WELLINGTON CITY COUNCIL
ELECTRICITY	BJ	LOT 3	VECTOR LIMITED

Memorandum of Easements

PURPOSE	SHOWN	SEV. TEN	GRANTEE
RIGHT OF WAY	AT	LOT 2	WELLINGTON CITY COUNCIL
	AV	LOT 16	CITY COUNCIL
	AW	LOT 15	

Notes:

- Note: Areas labelled A-B, D-J, M, N, P-T, V, AA-AF, AH-AM, and AP (Building exclusion areas), and areas labelled G-NZ (Chilling water locations), AY to be subject to a consent notice.
- * Areas labelled BB, BC, BD, BE, BF, BG, or BT are subject to a consent notice (Earthworks & bush protection).

Registered Proprietor

[Signature] Authorised Officer

Amalgamation Condition Certificate of Title

That Lots 8, 9 & 12 hereon be held in the same % B 829862.1

New C.O.T. Allocated

LOT 1 - CT 376809
LOT 2 - CT 376809
LOT 3 - CT 376810
LOT 4 - CT 376811
LOT 5 - CT 376812
LOT 6 - CT 376813
LOT 7 - CT 376814
LOT 8 - CT 376815
LOT 9 - CT 376816
LOT 10 - CT 376817
LOT 11 - CT 376818
LOT 12 - CT 376819
LOT 13 - CT 376820
LOT 14 - CT 376821
LOT 15 - CT 376822
LOT 16 - CT 376823
LOT 17 - CT 376824
LOT 18 - CT 376825
LOT 19 - CT 376826

Class of Survey = 1

Total Area 25.0715 ha.

Comprised in CT VIN 230 / 209 (All)

CT VIN 245 / 209 (EQ)

Russell Ian Paterson

being a person entitled to practice as a licensed cadastral surveyor, certify that the survey to which this plan relates is accurate, and was undertaken by me or under my direction in accordance with the Cadastral Survey Act 2002 and the Survey-General Rules for Cadastral Survey 2002 / 2.

The plan is accurate, and has been created in accordance with that Act and these Rules.

Signed *[Signature]* Date 26/11/2007

Field Book *[Signature]* **Theresa Book** *[Signature]*

Reference Plans: 603/2229, 2205/1400, 2205/1401, 2205/1402, 2205/1403, 2205/1404, 2205/1405, 2205/1406, 2205/1407, 2205/1408, 2205/1409, 2205/1410, 2205/1411, 2205/1412, 2205/1413, 2205/1414, 2205/1415, 2205/1416, 2205/1417, 2205/1418, 2205/1419, 2205/1420, 2205/1421, 2205/1422, 2205/1423, 2205/1424, 2205/1425, 2205/1426, 2205/1427, 2205/1428, 2205/1429, 2205/1430, 2205/1431, 2205/1432, 2205/1433, 2205/1434, 2205/1435, 2205/1436, 2205/1437, 2205/1438, 2205/1439, 2205/1440, 2205/1441, 2205/1442, 2205/1443, 2205/1444, 2205/1445, 2205/1446, 2205/1447, 2205/1448, 2205/1449, 2205/1450, 2205/1451, 2205/1452, 2205/1453, 2205/1454, 2205/1455, 2205/1456, 2205/1457, 2205/1458, 2205/1459, 2205/1460, 2205/1461, 2205/1462, 2205/1463, 2205/1464, 2205/1465, 2205/1466, 2205/1467, 2205/1468, 2205/1469, 2205/1470, 2205/1471, 2205/1472, 2205/1473, 2205/1474, 2205/1475, 2205/1476, 2205/1477, 2205/1478, 2205/1479, 2205/1480, 2205/1481, 2205/1482, 2205/1483, 2205/1484, 2205/1485, 2205/1486, 2205/1487, 2205/1488, 2205/1489, 2205/1490, 2205/1491, 2205/1492, 2205/1493, 2205/1494, 2205/1495, 2205/1496, 2205/1497, 2205/1498, 2205/1499, 2205/1500, 2205/1501, 2205/1502, 2205/1503, 2205/1504, 2205/1505, 2205/1506, 2205/1507, 2205/1508, 2205/1509, 2205/1510, 2205/1511, 2205/1512, 2205/1513, 2205/1514, 2205/1515, 2205/1516, 2205/1517, 2205/1518, 2205/1519, 2205/1520, 2205/1521, 2205/1522, 2205/1523, 2205/1524, 2205/1525, 2205/1526, 2205/1527, 2205/1528, 2205/1529, 2205/1530, 2205/1531, 2205/1532, 2205/1533, 2205/1534, 2205/1535, 2205/1536, 2205/1537, 2205/1538, 2205/1539, 2205/1540, 2205/1541, 2205/1542, 2205/1543, 2205/1544, 2205/1545, 2205/1546, 2205/1547, 2205/1548, 2205/1549, 2205/1550, 2205/1551, 2205/1552, 2205/1553, 2205/1554, 2205/1555, 2205/1556, 2205/1557, 2205/1558, 2205/1559, 2205/1560, 2205/1561, 2205/1562, 2205/1563, 2205/1564, 2205/1565, 2205/1566, 2205/1567, 2205/1568, 2205/1569, 2205/1570, 2205/1571, 2205/1572, 2205/1573, 2205/1574, 2205/1575, 2205/1576, 2205/1577, 2205/1578, 2205/1579, 2205/1580, 2205/1581, 2205/1582, 2205/1583, 2205/1584, 2205/1585, 2205/1586, 2205/1587, 2205/1588, 2205/1589, 2205/1590, 2205/1591, 2205/1592, 2205/1593, 2205/1594, 2205/1595, 2205/1596, 2205/1597, 2205/1598, 2205/1599, 2205/1600, 2205/1601, 2205/1602, 2205/1603, 2205/1604, 2205/1605, 2205/1606, 2205/1607, 2205/1608, 2205/1609, 2205/1610, 2205/1611, 2205/1612, 2205/1613, 2205/1614, 2205/1615, 2205/1616, 2205/1617, 2205/1618, 2205/1619, 2205/1620, 2205/1621, 2205/1622, 2205/1623, 2205/1624, 2205/1625, 2205/1626, 2205/1627, 2205/1628, 2205/1629, 2205/1630, 2205/1631, 2205/1632, 2205/1633, 2205/1634, 2205/1635, 2205/1636, 2205/1637, 2205/1638, 2205/1639, 2205/1640, 2205/1641, 2205/1642, 2205/1643, 2205/1644, 2205/1645, 2205/1646, 2205/1647, 2205/1648, 2205/1649, 2205/1650, 2205/1651, 2205/1652, 2205/1653, 2205/1654, 2205/1655, 2205/1656, 2205/1657, 2205/1658, 2205/1659, 2205/1660, 2205/1661, 2205/1662, 2205/1663, 2205/1664, 2205/1665, 2205/1666, 2205/1667, 2205/1668, 2205/1669, 2205/1670, 2205/1671, 2205/1672, 2205/1673, 2205/1674, 2205/1675, 2205/1676, 2205/1677, 2205/1678, 2205/1679, 2205/1680, 2205/1681, 2205/1682, 2205/1683, 2205/1684, 2205/1685, 2205/1686, 2205/1687, 2205/1688, 2205/1689, 2205/1690, 2205/1691, 2205/1692, 2205/1693, 2205/1694, 2205/1695, 2205/1696, 2205/1697, 2205/1698, 2205/1699, 2205/1700, 2205/1701, 2205/1702, 2205/1703, 2205/1704, 2205/1705, 2205/1706, 2205/1707, 2205/1708, 2205/1709, 2205/1710, 2205/1711, 2205/1712, 2205/1713, 2205/1714, 2205/1715, 2205/1716, 2205/1717, 2205/1718, 2205/1719, 2205/1720, 2205/1721, 2205/1722, 2205/1723, 2205/1724, 2205/1725, 2205/1726, 2205/1727, 2205/1728, 2205/1729, 2205/1730, 2205/1731, 2205/1732, 2205/1733, 2205/1734, 2205/1735, 2205/1736, 2205/1737, 2205/1738, 2205/1739, 2205/1740, 2205/1741, 2205/1742, 2205/1743, 2205/1744, 2205/1745, 2205/1746, 2205/1747, 2205/1748, 2205/1749, 2205/1750, 2205/1751, 2205/1752, 2205/1753, 2205/1754, 2205/1755, 2205/1756, 2205/1757, 2205/1758, 2205/1759, 2205/1760, 2205/1761, 2205/1762, 2205/1763, 2205/1764, 2205/1765, 2205/1766, 2205/1767, 2205/1768, 2205/1769, 2205/1770, 2205/1771, 2205/1772, 2205/1773, 2205/1774, 2205/1775, 2205/1776, 2205/1777, 2205/1778, 2205/1779, 2205/1780, 2205/1781, 2205/1782, 2205/1783, 2205/1784, 2205/1785, 2205/1786, 2205/1787, 2205/1788, 2205/1789, 2205/1790, 2205/1791, 2205/1792, 2205/1793, 2205/1794, 2205/1795, 2205/1796, 2205/1797, 2205/1798, 2205/1799, 2205/1800, 2205/1801, 2205/1802, 2205/1803, 2205/1804, 2205/1805, 2205/1806, 2205/1807, 2205/1808, 2205/1809, 2205/1810, 2205/1811, 2205/1812, 2205/1813, 2205/1814, 2205/1815, 2205/1816, 2205/1817, 2205/1818, 2205/1819, 2205/1820, 2205/1821, 2205/1822, 2205/1823, 2205/1824, 2205/1825, 2205/1826, 2205/1827, 2205/1828, 2205/1829, 2205/1830, 2205/1831, 2205/1832, 2205/1833, 2205/1834, 2205/1835, 2205/1836, 2205/1837, 2205/1838, 2205/1839, 2205/1840, 2205/1841, 2205/1842, 2205/1843, 2205/1844, 2205/1845, 2205/1846, 2205/1847, 2205/1848, 2205/1849, 2205/1850, 2205/1851, 2205/1852, 2205/1853, 2205/1854, 2205/1855, 2205/1856, 2205/1857, 2205/1858, 2205/1859, 2205/1860, 2205/1861, 2205/1862, 2205/1863, 2205/1864, 2205/1865, 2205/1866, 2205/1867, 2205/1868, 2205/1869, 2205/1870, 2205/1871, 2205/1872, 2205/1873, 2205/1874, 2205/1875, 2205/1876, 2205/1877, 2205/1878, 2205/1879, 2205/1880, 2205/1881, 2205/1882, 2205/1883, 2205/1884, 2205/1885, 2205/1886, 2205/1887, 2205/1888, 2205/1889, 2205/1890, 2205/1891, 2205/1892, 2205/1893, 2205/1894, 2205/1895, 2205/1896, 2205/1897, 2205/1898, 2205/1899, 2205/1900, 2205/1901, 2205/1902, 2205/1903, 2205/1904, 2205/1905, 2205/1906, 2205/1907, 2205/1908, 2205/1909, 2205/1910, 2205/1911, 2205/1912, 2205/1913, 2205/1914, 2205/1915, 2205/1916, 2205/1917, 2205/1918, 2205/1919, 2205/1920, 2205/1921, 2205/1922, 2205/1923, 2205/1924, 2205/1925, 2205/1926, 2205/1927, 2205/1928, 2205/1929, 2205/1930, 2205/1931, 2205/1932, 2205/1933, 2205/1934, 2205/1935, 2205/1936, 2205/1937, 2205/1938, 2205/1939, 2205/1940, 2205/1941, 2205/1942, 2205/1943, 2205/1944, 2205/1945, 2205/1946, 2205/1947, 2205/1948, 2205/1949, 2205/1950, 2205/1951, 2205/1952, 2205/1953, 2205/1954, 2205/1955, 2205/1956, 2205/1957, 2205/1958, 2205/1959, 2205/1960, 2205/1961, 2205/1962, 2205/1963, 2205/1964, 2205/1965, 2205/1966, 2205/1967, 2205/1968, 2205/1969, 2205/1970, 2205/1971, 2205/1972, 2205/1973, 2205/1974, 2205/1975, 2205/1976, 2205/1977, 2205/1978, 2205/1979, 2205/1980, 2205/1981, 2205/1982, 2205/1983, 2205/1984, 2205/1985, 2205/1986, 2205/1987, 2205/1988, 2205/1989, 2205/1990, 2205/1991, 2205/1992, 2205/1993, 2205/1994, 2205/1995, 2205/1996, 2205/1997, 2205/1998, 2205/1999, 2205/2000, 2205/2001, 2205/2002, 2205/2003, 2205/2004, 2205/2005, 2205/2006, 2205/2007, 2205/2008, 2205/2009, 2205/2010, 2205/2011, 2205/2012, 2205/2013, 2205/2014, 2205/2015, 2205/2016, 2205/2017, 2205/2018, 2205/2019, 2205/2020, 2205/2021, 2205/2022, 2205/2023, 2205/2024, 2205/2025, 2205/2026, 2205/2027, 2205/2028, 2205/2029, 2205/2030, 2205/2031, 2205/2032, 2205/2033, 2205/2034, 2205/2035, 2205/2036, 2205/2037, 2205/2038, 2205/2039, 2205/2040, 2205/2041, 2205/2042, 2205/2043, 2205/2044, 2205/2045, 2205/2046, 2205/2047, 2205/2048, 2205/2049, 2205/2050, 2205/2051, 2205/2052, 2205/2053, 2205/2054, 2205/2055, 2205/2056, 2205/2057, 2205/2058, 2205/2059, 2205/2060, 2205/2061, 2205/2062, 2205/2063, 2205/2064, 2205/2065, 2205/2066, 2205/2067, 2205/2068, 2205/2069, 2205/2070, 2205/2071, 2205/2072, 2205/2073, 2205/2074, 2205/2075, 2205/2076, 2205/2077, 2205/2078, 2205/2079, 2205/2080, 2205/2081, 2205/2082, 2205/2083, 2205/2084, 2205/2085, 2205/2086, 2205/2087, 2205/2088, 2205/2089, 2205/2090, 2205/2091, 2205/2092, 2205/2093, 2205/2094, 2205/2095, 2205/2096, 2205/2097, 2205/2098, 2205/2099, 2205/2100, 2205/2101, 2205/2102, 2205/2103, 2205/2104, 2205/2105, 2205/2106, 2205/2107, 2205/2108, 2205/2109, 2205/2110, 2205/2111, 2205/2112, 2205/2113, 2205/2114, 2205/2115, 2205/2116, 2205/2117, 2205/2118, 2205/2119, 2205/2120, 2205/2121, 2205/2122, 2205/2123, 2205/2124, 2205/2125, 2205/2126, 2205/2127, 2205/2128, 2205/2129, 2205/2130, 2205/2131, 2205/2132, 2205/2133, 2205/2134, 2205/2135, 2205/2136, 2205/2137, 2205/2138, 2205/2139, 2205/2140, 2205/2141, 2205/2142, 2205/2143, 2205/2144, 2205/2145, 2205/2146, 2205/2147, 2205/2148, 2205/2149, 2205/2150, 2205/2151, 2205/2152, 2205/2153, 2205/2154, 2205/2155, 2205/2156, 2205/2157, 2205/2158, 2205/2159, 2205/2160, 2205/2161, 2205/2162, 2205/2163, 2205/2164, 2205/2165, 2205/2166, 2205/2167, 2205/2168, 2205/2169, 2205/2170, 2205/2171, 2205/2172, 2205/2173, 2205/2174, 2205/2175, 2205/2176, 2205/2177, 2205/2178, 2205/2179, 2205/2180, 2205/2181, 2205/2182, 2205/2183, 2205/2184, 2205/2185, 2205/2186, 2205/2187, 2205/2188, 2205/2189, 2205/2190, 2205/2191, 2205/2192, 2205/2193, 2205/2194, 2205/2195, 2205/2196, 2205/2197, 2205/2198, 2205/2199, 2205/2200, 2205/2201, 2205/2202, 2205/2203, 2205/2204, 2205/2205, 2205/2206, 2205/2207, 2205/2208, 2205/2209, 2205/2210, 2205/2211, 2205/2212, 2205/2213, 2205/2214, 2205/2215, 2205/2216, 2205/2217, 2205/2218, 2205/2219, 2205/2220, 2205/2221, 2205/2222, 2205/2223, 2205/2224, 2205/2225, 2205/2226, 2205/2227, 2205/2228, 2205/2229, 2205/2230, 2205/2231, 2205/2232, 2205/2233, 2205/2234, 2205/2235, 2205/2236, 2205/2237, 2205/2238, 2205/2239, 2205/2240, 2205/2241, 2205/2242, 2205/2243, 2205/2244, 2205/2245, 2205/2246, 2205/2247, 2205/2248, 2205/2249, 2205/2250, 2205/2251, 2205/2252, 2205/2253, 2205/2254, 2205/2255, 2205/2256, 2205/2257, 2205/2258, 2205/2259, 2205/2260, 2205/2261, 2205/2262, 2205/2263, 2205/2264, 2205/2265, 2205/2266, 2205/2267, 2205/2268, 2205/2269, 2205/2270, 2205/2271, 2205/2272, 2205/2273, 2205/2274, 2205/2275, 2205/2276, 2205/2277, 2205/2278, 2205/2279, 2205/2280, 2205/2281, 2205/2282, 2205/2283, 2205/2284, 2205/2285, 2205/2286, 2205/2287, 2205/2288, 2205/2289, 2205/2290, 2205/2291, 2205/2292, 2205/2293, 2205/2294, 2205/2295, 2205/2296, 2205/2297, 2205/2298, 2205/2299, 2205/2300, 2205/2301, 2205/2302, 2205/2303, 2205/2304, 2205/2305, 2205/2306, 2205/2307, 2205/2308, 2205/2309, 2205/2310, 2205/2311, 2205/2312, 2205/2313, 2205/2314, 2205/2315, 2205/2316, 2205/2317, 2205/2318, 2205/2319, 2205/2320, 2205/2321, 2205/2322, 2205/2323, 2205/2324, 2205/2325, 2205/2326, 2205/2327, 2205/2328, 2205/2329, 2205/2330, 2205/2331, 2205/2332, 2205/2333, 2205/2334, 2205/2335, 2205/2336, 2205/2337, 2205/2338, 2205/2339, 2205/2340, 2205/2341, 2205/2342, 2205/2343, 2205/2344, 2205/2345, 2205/2346, 2205/2347, 2205/2348, 2205/2349, 2205/2350, 2205/2351, 2205/2352, 2205/2353, 2205/2354, 2205/2355, 2205/2356, 2205/2357, 2205/2358, 2205/2359, 2205/2360, 2205/2361, 2205/2362, 2205/2363, 2205/2364, 2205/2365, 2205/2366, 2205/2367, 2205/2368, 2205/2369, 2205/2370, 2205/2371, 2205/2372, 2205/2373, 2205/2374, 2205/2375, 2205/2376, 2205/2377, 2205/2378, 2205/2379, 2205/2380, 2205/2381, 2205/2382, 2205/2383, 2205/2384, 2205/2385, 2205/2386, 2205/2387, 2205/2388, 2





RECORD OF TITLE
UNDER LAND TRANSFER ACT 2017
FREEHOLD
Search Copy



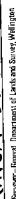

R.W. Muir
Registrar-General
of Land

Identifier **WN23C/210**
Land Registration District **Wellington**
Date Issued 09 September 1983

Prior References
WN6D/487

Estate Fee Simple
Area 7.1345 hectares more or less
Legal Description Lot 5 Deposited Plan 54434
Purpose Public reserve
Registered Owners
Wellington City Council

Interests
Subject to Section 59 Land Act 1948





RECORD OF TITLE
UNDER LAND TRANSFER ACT 2017
FREEHOLD
Search Copy




R.W. Muir
Registrar-General
of Land

Identifier **WN34C/629**

Land Registration District **Wellington**

Date Issued 05 July 1989

Prior References

WN24D/242

Estate	Fee Simple
Area	79.1230 hectares more or less
Legal Description	Part Section 168 Porirua District and Part Section 41 Horokiwi Road District
Purpose	Scenic Reserve
Registered Owners	Wellington City Council

Interests

Appurtenant hereto is a water main right specified in Easement Certificate 341532.5 (affects Part Section 41 Horokiwi Road District)

Subject to Section 168A Coal Mines Act 1925

Subject to Section 8 Mining Act 1971

Subject to a right (in gross) to electricity and telecommunications over parts marked A, B and C on DP 88730 and over part marked MI on DP 75447 in favour of Transpower New Zealand Limited created by Transfer B805892.3 - 10.10.2000 at 3.31 pm

8889814.1 Forestry Sink Covenant pursuant to Section 67Y Forests Act 1949 - 21.10.2011 at 11:21 am

Subject to the Reserves Act 1977

Subject to a right of way (in gross) over Part Section 41 Horokiwi Road District marked H, I, J, K and L and to a right (in gross) to convey electricity and telecommunications over Part Section 41 Horokiwi Road District marked A, B C, D and E all on DP 548708 in favour of Wellington Electricity Lines Limited created by Easement Instrument 12165837.2 - 13.12.2021 at 1:04 pm

