



matvin

Released under the provision of
the Official Information Act 1982

RESOURCE
CONSENT
PROPOSAL

matvin

20+ years of Property Development in New Zealand

Developments under construction and committed in excess of \$1.0 billion

A development team of 14 **talented industry professionals**

A Consultant team of **60+ businesses** covering design, planning and engineering

Longstanding relationships with all mainstream banks and private equity partners

MAKO

Commercial
Construction
Specialists

Matvin subsidiary construction company and the main contractor dedicated to Matvin Group projects

A construction management team of 20 experienced **industry leaders**

A team of **experienced** on the ground contractors

Strong vertically integrated in house capabilities in **design, engineering and project management**

Early contractor involvement to ensure buildings are **fit for purpose**, of the highest quality and stand the test of time

Streamlined procurement model based on **trusted relationships** and control of the supply chain

A continuation of Matvin Construction **established in 2003**

WHO WE ARE

We are a specialist
developer-builder in the
Auckland market.

Founded in 2001 Matvin Group is a specialist residential, commercial and industrial property developer based in Auckland.

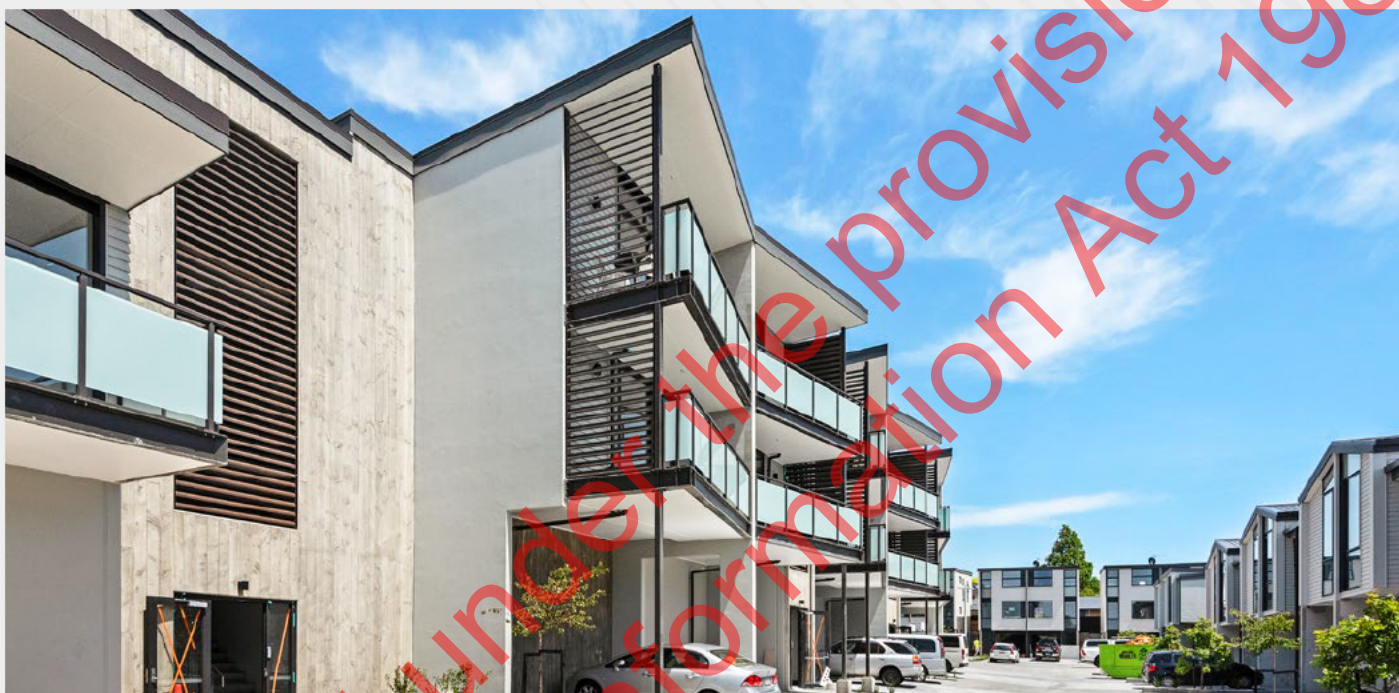
We have over 20 years of experience across New Zealand designing and delivering a variety of quality and commercially successful projects in a range of sizes.

Our philosophy is simple – a clear vision and precise execution with a focus on opportunities which are well located to transport networks and in high growth areas.

Matvin is unique in the fact that we are a developer-builder, meaning we have control over the construction timelines from start to finish.



WHAT WE DO



Relationships

As a team, we pride ourselves on building strong relationships with our consultants, contractors, and a wide range of suppliers. They help us design and deliver quality projects. Our relationships with local, national and multi-national clients and consultants gives us the ability and confidence to move quickly. Many of these businesses are consistent partners through our range of projects.

We are proud that through the work we do, we directly employ a team of over 30 people and support over 60 other businesses directly and indirectly in some cases for many years. We have kept these teams busy and committed to working with us to deliver Matvin projects over the last 20 years.

Design

We work with industry leading consultants to master-plan and design quality built environments in the knowledge that what we create will contribute to communities for years to come. Designing to the highest standards we attract residential purchasers and premium tenants with beautifully designed, methodical and functional layouts.

Part of building strong quality communities involves creating residential and commercial spaces that will stand the test of time. Giving people a warm, safe space to work in and come home to. At Matvin, we feel that we do this and are constantly looking to make places better.

Build

For 20 years Matvin has partnered with MAKO Commercial Construction Specialists. Using the latest technology and methods to create simple award winning projects.

This is a proven combination, consistently delivering successful projects. This close relationship ensures consistent proven performance and results. Matvin and MAKO are a tried and true combination which has meant stability and a set process that really works.

OUR DEVELOPMENTS

THE BOTANIC SILVERDALE

Resource Consent

Granted 22 September 2020.

Construction

Commenced November 2020 and will be developed over a 6 year period.

The first units are ready for occupation late August 2021.

Completed Value

s 9(2)(b)(ii)

Jobs Created

2,158 over construction and 67 permanent operational jobs.

About

The Botanic is a stunning new retirement village for people who desire a life full of purpose, nature, wellbeing and joy. Modern, light-filled, spacious and inclusive, it is the very best in class when it comes to aged care living.

It will be home to 700+ people with 500+ dwellings across a mixture of independent living villas and apartments, aged care and memory care rooms. The residents will also enjoy the benefit of extensive facilities including pool, gym, club house and bowling green.

Park-like landscaping and a magnificent tree-lined boardwalk create an environment which encourages people to lead healthy, fulfilled lives rich in connection and community.



THE GROVES COMMERCIAL



Resource Consent

Granted 13 September 2017.

Construction

Commenced September 2017.

Completed July 2019.

Completed Value

s 9(2)(b)(ii)

About

This is a comprehensive mixed use development including The Groves, an apartment block with retail at ground floor a cafe and a childcare centre, a fast food outlet with drive through, a 24 hour gym and a service station.

These lots were consented and then designed for specific tenant's including Bestart Childcare, Anytime Fitness, Burger King, Z Petrol Station and eight retail tenancies.



OUR DEVELOPMENTS

THE GROVES RESIDENTIAL



Resource Consent

Granted 13 September 2017.

Construction

Commenced September 2017.

Completed July 2019.

Completed Value

s 9(2)(b)(ii)

About

The residential portion of The Groves mixed use development consisted of 27 terraced houses and 13 Apartments ranging from 50m² to 110m² with one to three bedroom options respectively.

The houses boast architecturally designed layouts, with large stud heights and functional spaces for residents.



OUR DEVELOPMENTS

KUMEU CENTRAL



Resource Consent

Granted 12 July 2019.

Construction

Commenced November 2019.

Completed June 2021.

Completed Value

s 9(2)(b)(ii)

About

Kumeu Central is a greenfield development Matvin Group designed from the ground up. Having identified the need for high grade commercial premises in Kumeu, the building is anchored by multinational brands Anytime Fitness and Burger King Restaurants. The site consists of 3345m² of land and 1723m² of net lettable floor area.



4 ALBERTO LANE

Resource Consent

Granted 17 July 2017.

Construction

Site works commenced September 2017.

Construction commenced July 2019.

Completed October 2020.

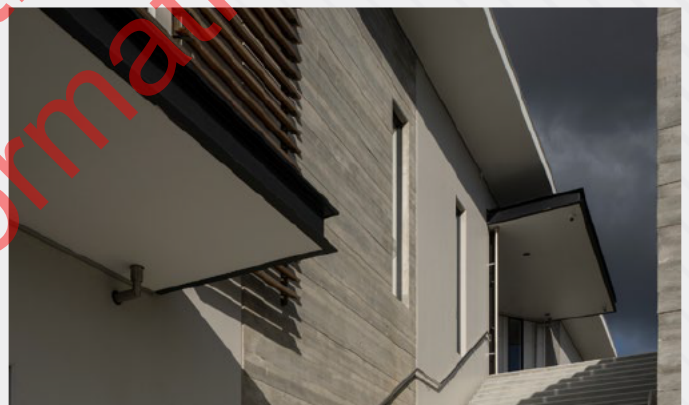
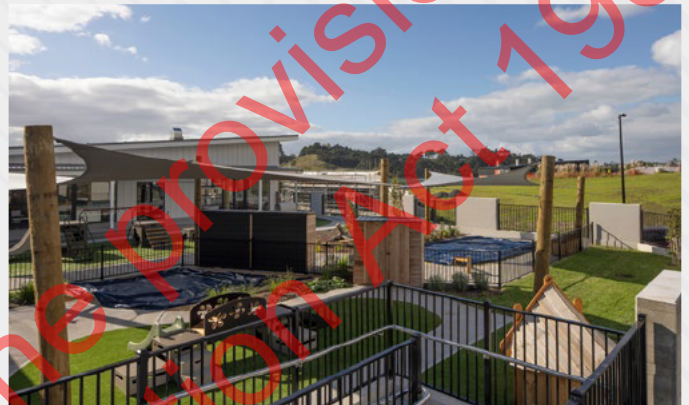
Completed Value

s 9(2)(b)(ii)

About

4 Alberto lane located in Silverdale, Auckland is a two storey commercial building comprising of five retail shops on the ground level and a Childcare centre on the first floor. New Zealand's largest childcare operator, BestStart Childcare is the anchor tenant and has taken a long lease over 400m² of floor space.

The ground floor retail shops have been designed for grab and go retailers to service the surrounding population.



1 ALBERTO LANE



Resource Consent

Granted December 2018.

Construction

Site works commenced September 2017.

Commenced April 2019.

Completed July 2021.

Completed Value

s 9(2)(b)

About

1 Alberto Lane is designed as a destination building. Boasting a 100m frontage onto Hibiscus Coast Highway, this is a statement building which is part of the gateway to the Hibiscus Coast and impossible to miss.

Anchor tenants include Joe's Garage, AON Insurance and Anytime Fitness.

With the top floor fully leased to International Companies, this building will be a retail hub for all residents on the Hibiscus Coast.



OUR DEVELOPMENTS

5 ORACLE DRIVE



Resource Consent

Granted September 2018.

Construction

Commenced November 2018.

Completed November 2019.

Completed Value

s 9(2)(b)(ii)

About

Oracle Drive encompasses beautifully designed retail and industrial units with a total of 40 within the development. The site took 18 months to complete, with units ranging in size from 50 – 300m² on 8000m² of land.

OUR SENIOR LEADERSHIP TEAMS

MATVIN GROUP



Matt Ellingham
Director



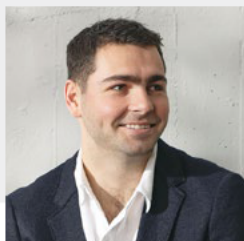
Kevin Clark
Director



Ryan Keogh
Group Chief Executive
Officer



Jeremy Quiding
Senior Development
Manager



Nathan Buckley
Development Manager



James McQuaid
Development Manager



Thomas Rutter
Development Manager



William Koreman
Asset Manager

MAKO COMMERCIAL



Matt Ellingham
Director



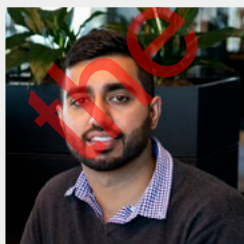
Ryan Keogh
Group Chief Executive
Officer



James Ciurlionis
Director & General
Manager



John Carter
Project Director



Hardeep Singh
Commercial Manager



Leon Sandford
Quantity Surveying
Manager



Denise Steele
Health, Safety, Environmental
& Quality Manager

WHO WE WORK WITH

CLIENTS WE ARE PROUD TO SERVE



TRUSTED BUSINESS PARTNERS



CONTACT DETAILS

Kevin Clark

Director,
Matvin Group

s 9(2)(a)

Matthew Ellingham

Director,
Matvin Group

s 9(2)(a)

matvin.co.nz