



Key

Paving

- JOALThreshold - Firth Holland Sets
- JOAL Pavement concrete with 5kg Black Oxide & Sandblasted Finish
- JOAL Pavement 1 concrete with 5kg Black Oxide & Broom Finish
- Atlas Longburn Exposed Aggregate Concrete with 5kg Black Oxide
- Coloured Concrete with Acid Etch
- Coloured Concrete with Acid Etch Finish 800 x 400 Decorative Sawcuts
- Waikato Fleck Pebble
- 800 X 400 Concrete Pavers in Waikato Fleck Pebble

Fencing & Retaining

- 1m High Vertical Timber Batten Fence
- 1.6m High Solid Timber Fence
- 1.8m High Solid Timber Fence
- Timber Retaining Wall
- Key Stone Retaining Wall

Fittings

- Type A Foldout Clothesline 2.4 x 1.5m
- Type B Foldout Clothesline 2.2 x 1.2m
- Rubbish / Recycle Bins
- Gate to Match Fence
- Letterbox

Soft Landscape

- Lawn
- Shrub / Groundcover
- Hedge
- Specimen Tree
- Climbers

MAHUTONGA AVENUE



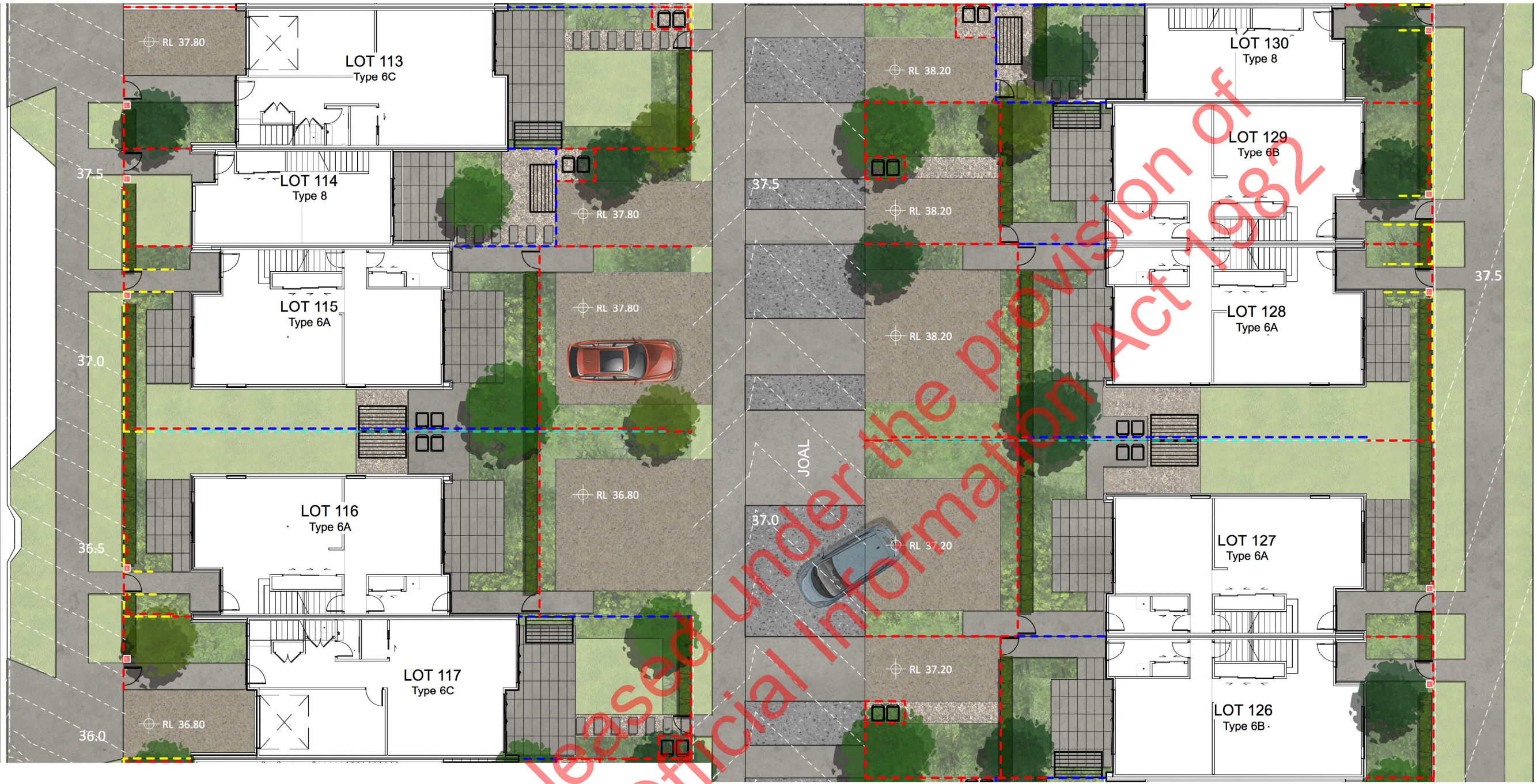
NAWA BLOCK BEACHLANDS RESIDENTIAL (BLOCK 3)

LANDSCAPE PLAN 3.1

REF: 20905
 DRW NO: LP01
 DATE: 23.11.2020
 SCALE: 1:200
 REV: -

RESOURCE CONSENT - PRELIMINARY





Key

Paving

- JOALThreshold - Firth Holland Sets
- JOAL Pavement concrete with 5kg Black Oxide & Sandblasted Finish
- JOAL Pavement 1 concrete with 5kg Black Oxide & Broom Finish
- Atlas Longburn Exposed Aggregate Concrete with 5kg Black Oxide
- Coloured Concrete with Acid Etch
- Coloured Concrete with Acid Etch Finish 800 x 400 Decorative Sawcuts
- Waikato Fleck Pebble
- 800 X 400 Concrete Pavers in Waikato Fleck Pebble

Fencing & Retaining

- 1m High Vertical Timber Batten Fence
- 1.6m High Solid Timber Fence
- 1.8m High Solid Timber Fence
- Timber Retaining Wall
- Key Stone Retaining Wall

Fittings

- Type A Foldout Clothesline 2.4 x 1.5m
- Type B Foldout Clothesline 2.2 x 1.2m
- Rubbish / Recycle Bins
- Gate to Match Fence
- Letterbox

Soft Landscape

- Lawn
- Shrub / Groundcover
- Hedge
- Specimen Tree
- Climbers

MAHUTONGA AVENUE



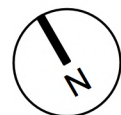
Site Location

**NAWA BLOCK BEACHLANDS
RESIDENTIAL (BLOCK 3)**

**LANDSCAPE
PLAN 3.2**

REF: 20905
DRW NO: LP02
DATE: 23.11.2020
SCALE: 1:200
REV: -

RESOURCE CONSENT - PRELIMINARY





Key

Paving

- JOALThreshold - Firth Holland Sets
- JOAL Pavement concrete with 5kg Black Oxide & Sandblasted Finish
- JOAL Pavement 1 concrete with 5kg Black Oxide & Broom Finish
- Atlas Longburn Exposed Aggregate Concrete with 5kg Black Oxide
- Coloured Concrete with Acid Etch
- Coloured Concrete with Acid Etch Finish 800 x 400 Decorative Sawcuts
- Waikato Fleck Pebble
- 800 X 400 Concrete Pavers in Waikato Fleck Pebble

Fencing & Retaining

- 1m High Vertical Timber Batten Fence
- 1.6m High Solid Timber Fence
- 1.8m High Solid Timber Fence
- Timber Retaining Wall
- Key Stone Retaining Wall

Fittings

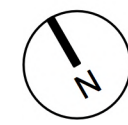
- Type A Foldout Clothesline 2.4 x 1.5m
- Type B Foldout Clothesline 2.2 x 1.2m
- Rubbish / Recycle Bins
- Gate to Match Fence
- Letterbox

Soft Landscape

- Lawn
- Shrub / Groundcover
- Hedge
- Specimen Tree
- Climbers

Site Location

Released under the Official Information Act 1982



NAWA BLOCK BEACHLANDS RESIDENTIAL (BLOCK 3)

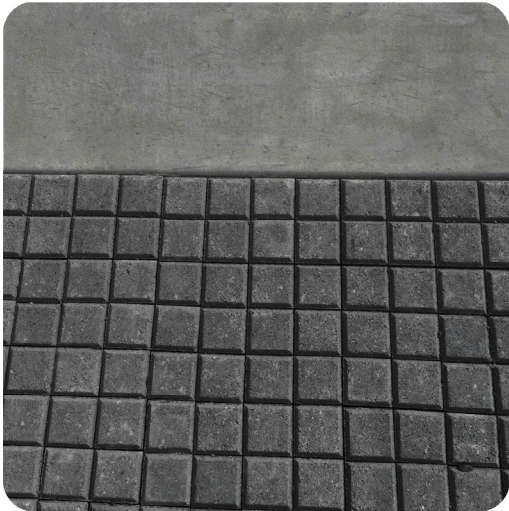
LANDSCAPE PLAN 3.3

REF: 20905
DRW NO: LP03
DATE: 23.11.2020
SCALE: 1:200
REV: -

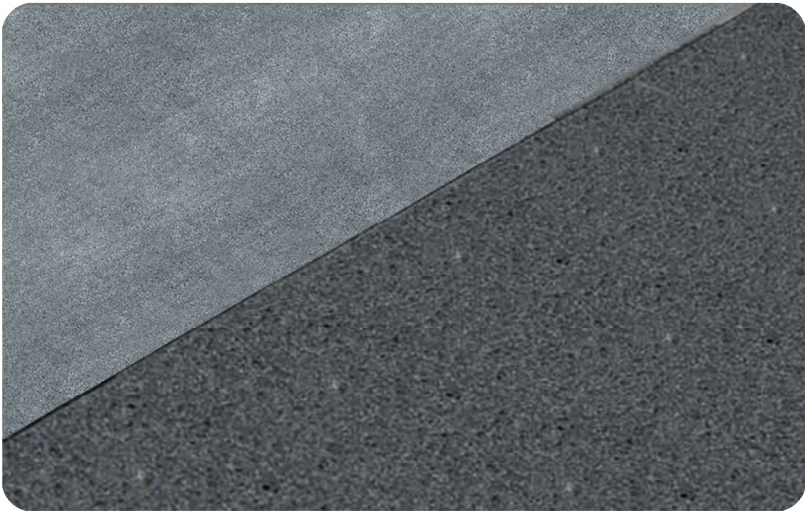
RESOURCE CONSENT - PRELIMINARY

Material Images

JOAL PAVING



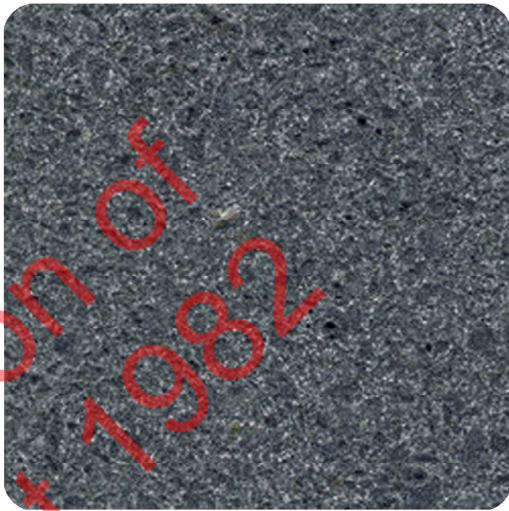
JOALThreshold - Firth Holland Sets



JOAL Pavement - Contrasting Concrete Finishes Proposed



Standard Concrete with 6 kg Black Oxide & Acid Etch Finish



Standard Concrete with 6 kg Black Oxide & Sand-blasted Finish

TERRACE HOUSING PAVING/SURFACING



Atlas 'Longburn' Exposed Aggregate Concrete with 6kg Black Oxide



1.2m Vertical Slat Aluminum Fencing

SITE FITTINGS



Box Design - 'Designer' Rear Opening Letter Box



Hills Fold Out Clothesline

FENCING



1.2m High Timber Batten Fence



1.8m Stained Solid Timber Fencing

RETAINING WALLS



Low Timber (On-site)



Straight-Faced Segmental Block (Street Facing)

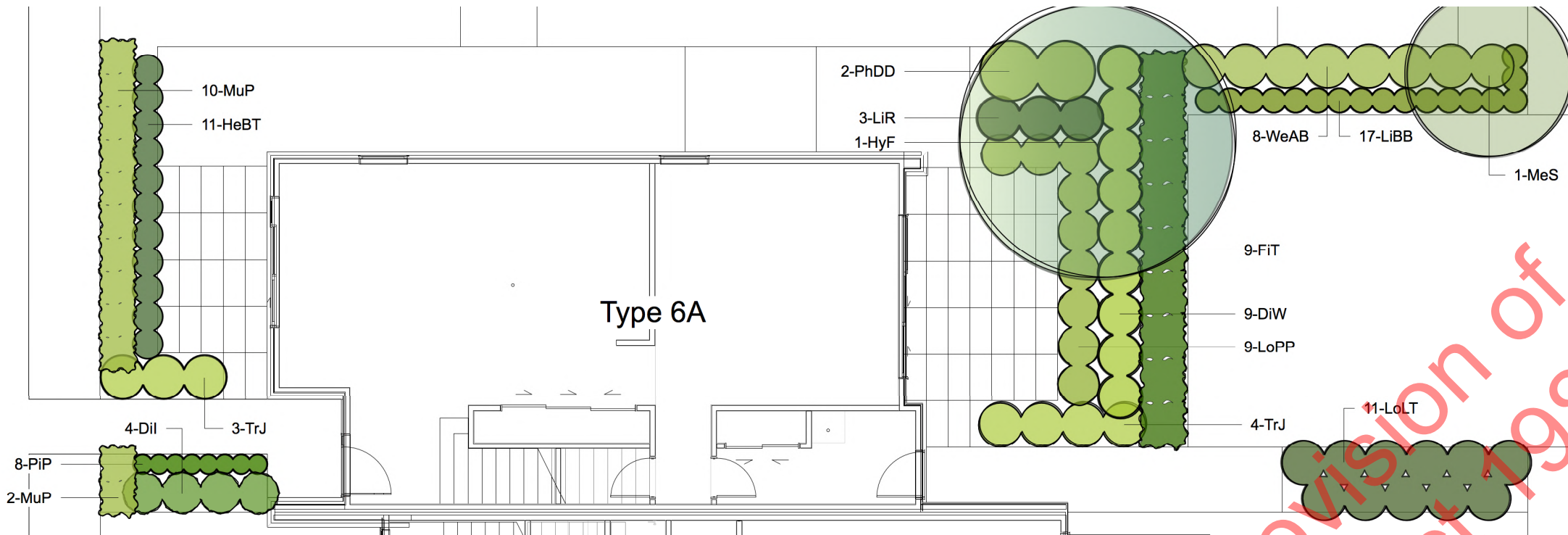
NAWA BLOCK BEACHLANDS
RESIDENTIAL (BLOCK 3)

MATERIAL
IMAGES

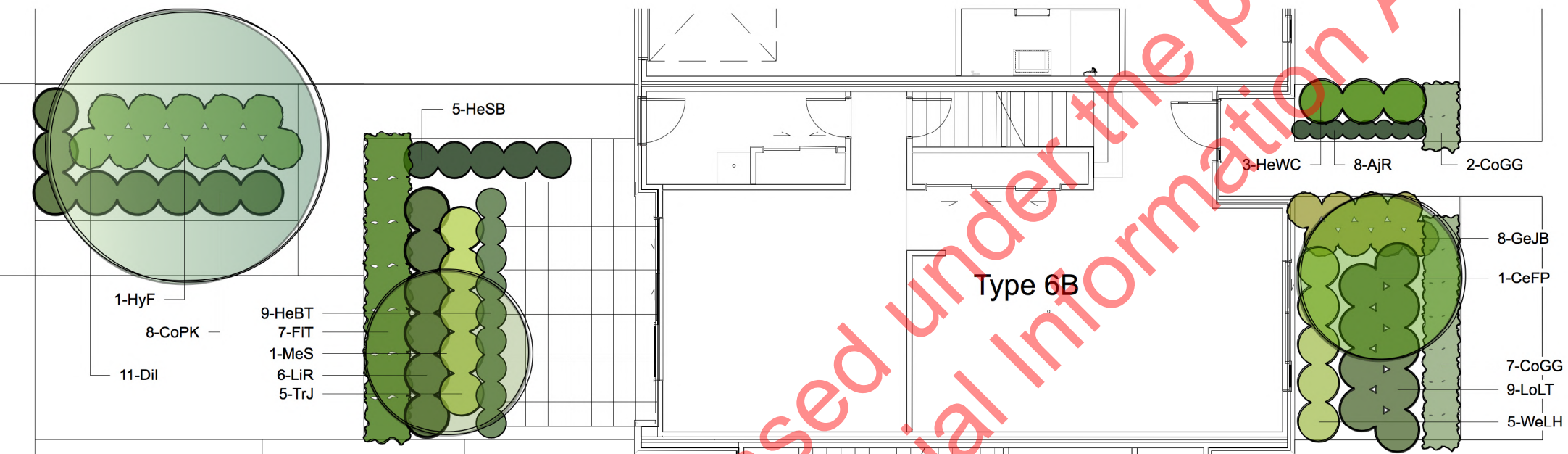
REF: 20905
DRW NO: LP04
DATE: 23.11.2020
SCALE: -
REV: -

RESOURCE CONSENT - PRELIMINARY

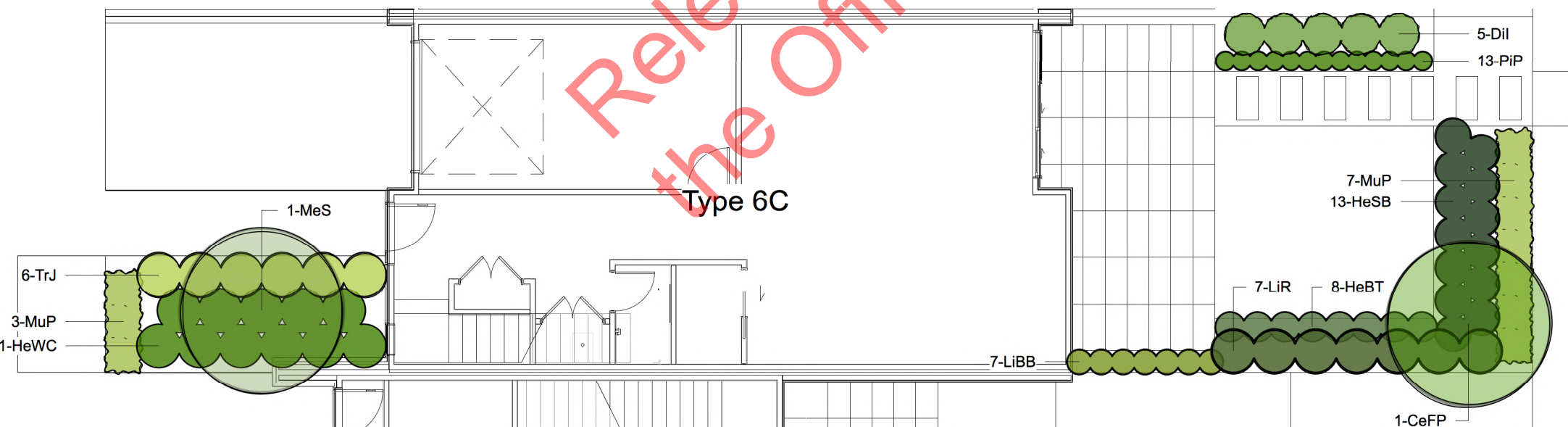




1 Type 6A Planting Plan
Scale 1:100



2 Type 6B Planting Plan
Scale 1:100



3 Type 6C Planting Plan
Scale 1:100

Released under the provision of the Official Information Act 1982

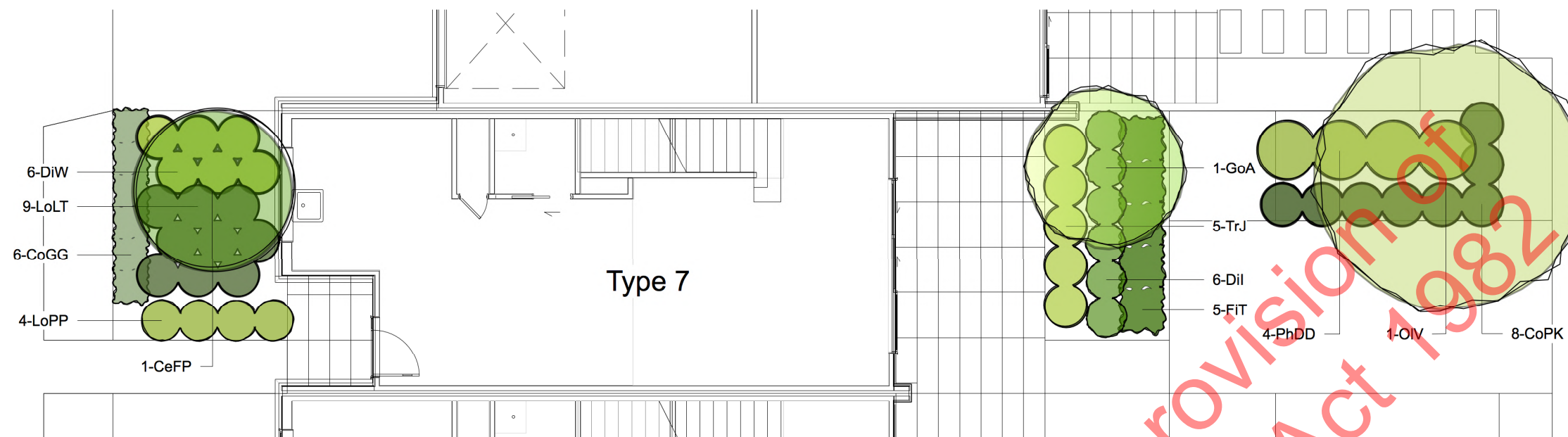


NAWA BLOCK BEACHLANDS
RESIDENTIAL (BLOCK 3)

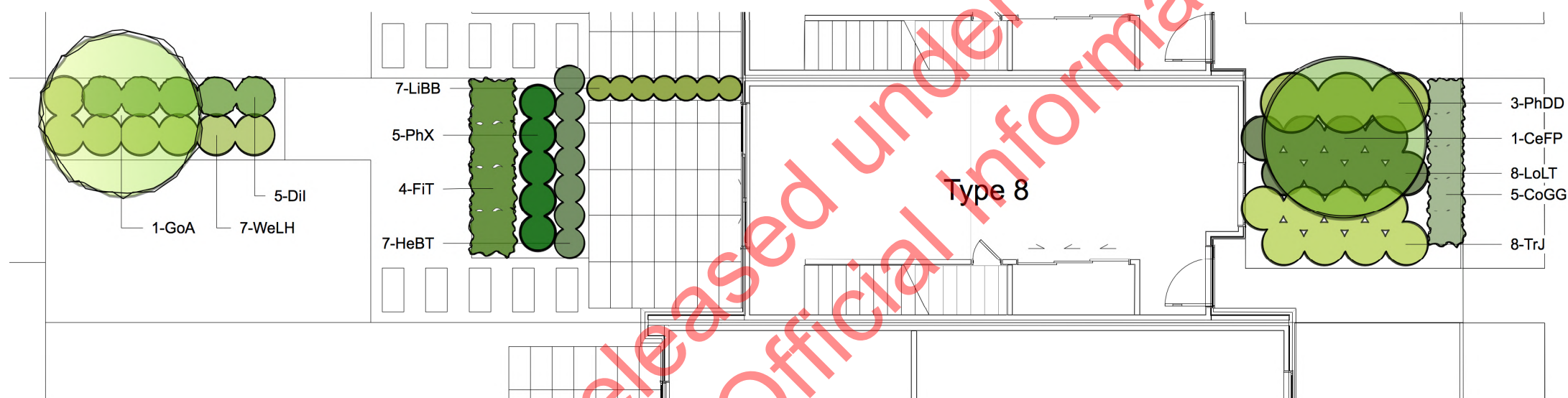
PLANTING PLAN (TYPICAL) -
TYPE 6A, 6B & 6C

REF: 20905
DRW NO: PP01
DATE: 23.11.2020
SCALE: 1:100
REV: -

RESOURCE CONSENT - PRELIMINARY



4 Type 7 Planting Plan
Scale 1:100



5 Type 8 Planting Plan
Scale 1:100



NAWA BLOCK BEACHLANDS
RESIDENTIAL (BLOCK 3)

PLANTING PLAN (TYPICAL) -
TYPE 7 & 8

REF: 20905
DRW NO: PP02
DATE: 23.11.2020
SCALE: 1:100
REV: -

RESOURCE CONSENT - PRELIMINARY

Planting Schedule

ID	Latin Name	Common Name	Size	Spacing
AjR	<i>Ajuga 'Jungle Beauty'</i>	Bugle	PB3/2lt	300
CeFP	<i>Cercis 'Forest Pansy'</i>	Eastern Redbud	45lt	n/a
CoGG	<i>Corokia 'Geentys Green'</i>	Corokia var	PB8/5lt	600
CoPK	<i>Coprosma 'Poor Knights'</i>	Prostrate Coprosma	PB3/2lt	750
Dil	<i>Dietes iridioides</i>	Fortnight Lily	PB3/2lt	750
DiW	<i>Dianella 'Wyeena'</i>	Wyeena	PB3/2lt	750
FIT	<i>Ficus 'Tuffy'</i>	Fig var	PB12/8lt	800
GeJB	<i>Geranium 'Johnsons Blue'</i>	Cranesbill	PB3/2lt	600
GoA	<i>Gordonia axillaris</i>	Fried Egg Tree	45lt	n/a
HeBT	<i>Heuchera 'Black Taffeta'</i>	coral bells	PB3/2lt	500
HeSB	<i>Hemerocallis 'Stella Bella'</i>	Day Lily	PB3/2lt	600
HeWC	<i>Hebe 'Wiri Charm'</i>	Hebe var	PB3/2lt	750
HyF	<i>Hymenosporum 'Flavum'</i>	Australian Frangipani	45lt	n/a
LIBB	<i>Liriope 'Big Blue'</i>	Lily Turf	PB3/2lt	400
LIR	<i>Ligularia reniformis</i>	Tractor Seat	PB5/3lt	750
LoLT	<i>Lomandra 'Lime Tuft'</i>	Lomandra var	PB3/2lt	750
LoPP	<i>Loropetalum 'Purple Pixie'</i>	Fringe Flower var	PB3/2lt	700
MeS	<i>Meryta sinclairii</i>	Puka	45lt	n/a
MuP	<i>Murraya paniculata</i>	Orange Jessamine	PB8/5lt	600
OIV	<i>Olea 'Verdale'</i>	Olive	45lt	n/a
PhDD	<i>Phormium 'Dark Delight'</i>	Black Flax	PB8/5lt	1000
PhX	<i>Philodendron 'Xanadu'</i>	Miniature Philodendron	PB8/5lt	600
PIP	<i>Pimelia prostrata</i>	NZ Daphne	PB3/2lt	300
TrJ	<i>Trachelospermum jasminoides</i>	Star Jasmine	PB3/2lt	750
WeAB	<i>Westringea 'Aussie Box'</i>	Aussie box	PB3/2lt	750
WeLH	<i>Westringea 'Low Horizon'</i>	Westringea	PB3/2lt	750

Tree Images



Cercis 'Forest Pansy'



Gordonia axillaris



Hymenospermum flavum



Meryta sinclairii



Olea 'Verdale'

Shrub Images



Ajuga reptans 'Jungle Beauty'



Corokia x virgata 'Geenty's Green'



Coprosma repens 'Poor Knights'



Dietes iridioides



Dianella wyeena



Ficus tuffy



Geranium 'Johnsons Blue'



Heuchera 'Black Taffeta'



Hemerocallis 'Stella Bella'



Hebe 'Wiri Mist'



Liriope muscarum 'Big Blue'



Ligularia reniformis



Lomandra 'Lime Tuft'



Loropetalum 'Purple Pixie'



Murraya paniculata



Phormium 'Dark Delight'



Philodendron 'Xanadu'



Pimelea prostrata



Trachelospermum jasminoides



Westringea 'Aussie Box'



Westringea 'Low Horizon'



NAWA BLOCK BEACHLANDS
RESIDENTIAL (BLOCK 3)

PLANTING SCHEDULE
& IMAGES

REF: 20905
DRW NO: PP03
DATE: 23.11.2020
SCALE: -
REV: -
RESOURCE CONSENT - PRELIMINARY