

28 COMMUNITY ENGAGEMENT

28.1 Introduction

Community engagement with the Scheme was established early on in the process, and included development of two formal groups, the Leadership Group and Ruataniwha Stakeholder Group, to assist and advise the Project Team throughout the pre and full-feasibility phases of the project. The structure and role of these groups is further outlined in the sections below.

Public meetings, media releases, field days and speaking engagements have also allowed the public to remain informed of the Scheme over time. Many groups and organisations such as Rotary, Fish & Game, Department of Conservation, Mana Whenua and Forest & Bird have had site visits and/or presentations; and Territorial Authority staff and elected officials have been provided with regular updates on the Scheme and invited to attend field trips as they are arranged. Table 28.3.2 provides a summary.

28.2 Leadership Group

The Leadership Group was established in April 2010 to champion, govern and guide the feasibility Scheme; and to ensure that the correct market, economic, commercial, risk and benefit/cost questions were asked and systematically addressed so that the feasibility (including scale, extent and timing) of the Scheme could be determined.

Sam Robinson, a Central Hawke's Bay farmer and Chair of AgResearch, was appointed to Chair the group. Other members include representatives of the business and farming communities, Mana Whenua and Regional Council elected officials. Debbie Hewitt, the Chairman of the Ruataniwha Stakeholder Group is an active participant in the group discussions but remains independent of group decisions.

Throughout the feasibility phase of the project, the Leadership Group generally met on a bi-monthly basis, or as required in order to advise on process at key points. Table 28.2.1 lists the dates and location of Leadership Group meetings held.

Table 28.2.1 Leadership Group Meeting Summary

Date	Location
13 April 2010	Council Chamber, HBRC
2 June 2010	Council Chamber, HBRC
2 August 2010	Council Chamber, HBRC
12 October 2010	Council Chamber, HBRC
10 March 2011	Council Chamber, HBRC
18 August 2011	Council Chamber, HBRC
31 October 2011	Council Chamber, HBRC
29 March 2012	Council Chamber, HBRC
25 June 2012	Council Chamber, HBRC
14 August 2012	Council Chamber, HBRC
19 September 2012	Council Chamber, HBRC

28.3 Ruataniwha Stakeholder Group

The Ruataniwha Stakeholder Group was established in April 2010 to share information and identify and explore community expectations on water management for the various uses in the Upper Tukituki catchment, specifically on the Ruataniwha Plains. The group’s role also includes assisting with identification of the value of water to the whole community and in coordinating more effective stakeholder input into water management decision-making processes for the Plains. This includes providing guidance to the development of the Scheme in a collaborative way, with specific emphasis on environmental, social and cultural elements of the Scheme.

Debbie Hewitt, a Director of Horticulture NZ and a Central Hawke’s Bay farmer, Chairs the group, which includes representatives from Fish & Game, Forest and Bird, Department of Conservation, CHBDC, HBRC, Tukituki Liaison Group; as well as Mana Whenua, landowner, recreation clubs, and water user group representatives.

During the advanced pre-feasibility phase of the Scheme, Stakeholder Group meetings were held bi-monthly. This was increased to 6-weekly intervals during the full feasibility phase (June 2011 – August 2012). Table 28.3.1 summarises the Stakeholder Group meeting schedule and key topics discussed during each meeting.

Table 28.3.1: Summary of Stakeholder Group Meetings and Key Topics Discussed

Date	Summary of Meeting
6 May 2010	<ul style="list-style-type: none"> - Presentations on Regional Water Management Strategy, Tukituki Liaison Group, North Otago Farm – Audit Report, HBRC – Regional Strategic Water Demand and Availability Study, Science Programme - Terms of Reference discussed
22 June 2010	<ul style="list-style-type: none"> - Scheme Update - sites removed from Scheme due to geotech work/seismic activity - F&G indicated Trout spawning site in Dutch Creek - HBRC presentation on RC Science work - Update on 31 May Landowner Meeting - Group reminded this is a two year process
10 August 2010	<ul style="list-style-type: none"> - Scheme Update – Ruataniwha GW model completed by HBRC Science, trend showed decreasing availability of water for irrigation and other uses - Hapu site visit took place 7 Aug - Latest dam sites map displayed - Project Timeline circulated. - Opuha Irrigation System & Dam (Rural Delivery TV) shown to group. - Presentation from DOC on Canterbury Experience
26 October 2010	<ul style="list-style-type: none"> - Scheme Update – National Land & Water Forum Report discussed - Regional Councils' position paper on National Water Strategy discussed. - Debbie Hewitt to present at HB Regional Water Symposium - Presentation on Ruataniwha soil types - Presentations by Dan Bloomer & Chris Perley – Land Use Options & A Strategic View
1 February 2011	<ul style="list-style-type: none"> - Update on D5 & A7 sites, significant fault lines outlined in Ruataniwha Basin. Science Presentation on Tukituki hydrology and gw/sw interaction - Stakeholders asked for their Key issues - Costs, gravel, recreation , land use balance, keep the information flowing, environmental impact, how will best practice be enforced, see working in partnership – a Kaitiaki role - We don't have all the answers today, feasibility process will go for next 18 months
3 Jun 2011	<ul style="list-style-type: none"> - Schemes relationship with the media questioned - Sam Robinson, Chairman of RWS Leadership Group briefed the group - Cultural Impact Assessment study presented by Dr Benita Wakefield - Engineering Work programme – tender issued - Environmental Work programme – Eight Environmental work scopes presented
6 July 2011	<ul style="list-style-type: none"> - Update on Council approved funding & MAF funding for next financial year. - Technical Feasibility Update – Makaretu site drilling uncovered previously unknown aquifer. Expansion of drilling programme at Makaroro site - Environmental Work Programme – Tenders for Aquatic & Terrestrial work scopes closed today - Glen McLean appointed to undertake Spawning Survey. - Non-Physical Science Study Scopes outlined
19 August 2011	<ul style="list-style-type: none"> - Dam Engineering Update – D5 site no longer being investigated due to complex geotechnical discoveries. New footprint for A7 site shown

	<ul style="list-style-type: none"> - Updates provided on Ecology Studies, Spawning Survey, Social Impact Assessment, Mana Whenua Communications, Communications Strategy
6 October 2011	<ul style="list-style-type: none"> - Scheme Update – Drillers on site, 2 more potential irrigation zones M & N being considered, Land Use Intensification Study commencing - Update on Expectations for Current Consent Holders - Mana Whenua Values Setting Study – for wider plan change work commencing - Social Impact Assessment presentation by Nick Taylor - Update on Tuketuki Regional Plan Change and Community Engagement - Communications Strategy outlined
22 November 2011	<ul style="list-style-type: none"> - Scheme Update – Tonkin & Taylor Ltd Initial Project Description draft report received - exec summary to be provided to Stakeholder Group. - MAF representatives to meet with Council on funding - HBRC to have stand at CHB A & P Show - 2nd HB Land & Water Symposium announced for 30 November. - The “Risks” reiterated – Technical/Geological, Land Use Intensification, Change process for Consent Holders, Uptake Risk - Nominations asked for LUI steering group
10 February 2012	<ul style="list-style-type: none"> - Scheme Update – HBRC attending workshop on reticulation and refining costs. - Hydro Power evaluation being undertaken - MAF funding secured through to end of feasibility stage. - LUI update received - Update on Study scopes received - Presentation by Nick Taylor – Social Impact Assessment - conclusion Irrigation brings as important range of potential social-economic benefits that can enhance social and economic wellbeing - Finance and Business modelling update by Andrew Newman
22 March 2012	<ul style="list-style-type: none"> - Scheme Update – Timelines discussed may mean push from June to August - Helen Codlin on Tuketuki Plans Change – critical timelines to be in line with Water Storage Scheme, Stakeholder Group to be kept informed of key issues. Stakeholder members received feedback from community on recent “Consent Holder Newsletter” - Iain Maxwell gave update Water Quality programme – specifically nitrates and phosphorus - Presentations received from Gavin Lister, Isthmus Group on the Landscape Study, Simon Bickler, Clough & Associates – Archaeology, Michele Frey, Opus – Recreation Study - Update from LUI working party
27 April 2012	<ul style="list-style-type: none"> - Combined Leadership / Stakeholder Group meeting to be arranged. - A clear summary of studies to be provided - Updated Gantt chart circulated - project timelines pushed out to August. - Estimated cost for a piped distribution noted \$30 mil. This on top of the est. \$230 build cost - Presentation on Noise Assessment study and Traffic/Roading Study - Presentation on NIWA report on Reservoir Water Quality - Gerry Kessels presented his Terrestrial Ecology Report - Update from LUI working party
14 June 2012	<ul style="list-style-type: none"> - Feedback received on Terrestrial Ecology Report - Scheme Update – Zones M & N engineers currently reviewing. Construction of

	<ul style="list-style-type: none"> - distribution network would be driven by uptake - Tukituki Cultural Values & Uses Assessment presented by Marei Apatu and Dale Moffatt of Te Taiwhenua O Heretaunga - Update from LUI working party - HBRC Draft Ground Water/Surface Water Resource Report presented by Iain Maxwell and Rob Waldron
25 June 2012	<ul style="list-style-type: none"> - Presentation on HBRC Water Strategy, integration of Tukituki Plan Change and Water Storage Scheme - Group discussed EPA, making submissions, timelines - Presentation on Tukituki Choices, consultation process - Group discussed cost, ownership, employment, investment, consenting process
27 July 2012	<ul style="list-style-type: none"> - Overview given of next phase - Discussion on Feasibility Summary Report - Small Scale on Farm Water Storage - Presentation on Tonkin & Taylor Ltd Sedimentation Report - Presentation on Dam Break Analysis by Craig Goodier - Update from LUI working party - Presentation of Cawthron Aquatic Ecology Report by Roger Young from Cawthron - Presentation of Mitigation Offset Report by Larissa Coubrough - Overview of Tukituki River Catchment Cultural Values & Uses Report by Benita Wakefield - Update on Communication Activity
31 August 2012	<ul style="list-style-type: none"> - Scheme Update – science caucusing proposal, final aquatic ecology and mitigation/offset reports. - LUI final update and presentation of final Working Party report for members signatures - Draft Feasibility Environmental Summary Report to Council and completion of decision matrix - Discussion on position of cadmium as part of nutrient management discussion. - Economic overview from Macfarlane Rural Business Ltd – Review of Farm Profitability Report - Presentation on Tukituki Choices document and process - Discussion on Stakeholder Group future
14 December 2012	<ul style="list-style-type: none"> - Scheme Update provided including proposed timelines through 2013 - Presentation on the draft Tukituki Plan Change (A draft version had been pre-circulated) - Discussion on environmental reporting for the EPA process and opportunities for further involvement - Presentation from EPA on likely process if the Tukituki Catchment Proposal is called in - Outline provided on the HBRIC / HBRC relationship going forward - Interest canvassed for further discussions on the Mitigation and Offset Approach and Production Land Use Condition Development in the New Year - Update provided on the establishment of the Mana Whenua Working Party
28 March 2013	<ul style="list-style-type: none"> - Scheme Update on landowner meetings, procurement, building consent, Mana Whenua Working party process and the necessary DoC permissions - Outcomes of conditions discussions with the Key Farmers Reference Group and

	<p>Pan Sector Groups were discussed</p> <ul style="list-style-type: none">- Update on Plan Change 6 including confirmation that it was being notified on 4 May 2013- Update on the RWSS EPA documents which had been sent to the EA as Final Drafts for their completeness check- Progress on Farmer uptake discussed- HBRIC update including appointment of cultural, engineering and financial advisors- Questions raised regarding media comment
--	-------------------------------------------------------------------------------------------------------------------------------------------------------------------------------------------------------------------------------------------------------------------------------------------------------------------------------------------------------------------------------------------------------------------------------------------------------------------------------------------------------

A feature of the Stakeholder Group engagement has been the active participation of a number of the key Stakeholders in the development and refinement of the Integrated Mitigation & Offset Approach detailed in *(HBRIC 2013f)*. This has involved Workshops in March 2012, January 2013 and April 2013 which provided valuable assistance to the applicant's team preparing this report in terms of the detail and focus of the package. At the most recent workshop there was agreement regarding the concept that Mana Whenua would be an appropriate party to implement the contracts for the 5 projects and the role of the Ruataniwha Biodiversity Advisory Board was discussed in this context.

Also at this meeting, representatives of Te Taiao Hawke's Bay Environment Forum tabled some comments from Dr Amelia McQueen on the detail of the Terrestrial Ecology Assessment *(Kessels & Associates, May 2013)*. It has been agreed that a further meeting with Te Taiao Hawke's Bay Environment Forum and HBRIC Ltd representatives will be held in May 2013 to which Dr McQueen and Mr Kessels will be invited to discuss these outstanding issues.

Table 28.3.2 below sets out other Community Engagement.

Table 28.3.2: A Summary Outline of Community Engagements Held Since 2009.

Meeting Type/Organisation	Date	Location(s)
CHBDC & HDC meetings	June 2009 – August 2012	CHBDC; HDC; Dam Site
Various public meetings (approx. 10)	July 2009 – September 2012	Various Hawke's Bay Locations
Potentially Affected Landowner meetings (group and one-on-one meetings – approx. 20)	September 2009 – August 2012	Various locations, Central Hawke's Bay
Various Forest and Bird meetings (e.g. CHB, Hastings and Havelock North Branches)	October 2010 – April 2012	Waipukurau Hastings & Havelock North
Regional Water Symposiums	31 November - 1 December 2010 & 30 November 2011	Napier War Memorial Conference Centre
Grasshoppers Visit	January 2012	Wakarara Road & Wallingford Station
Nga Kaitiaki o te Awa a Ngaruroro @ Love Our River Day	18 February 2012	Kuripapango
Greenmeadows Rotary	21 March 2012	Taradale Town Hall
Green Party	19 April 2012	Napier
HB Chamber of Commerce	21 June 2012	Hettinga Estate
CHB Anglers	4 July 2012	CHB
Fish & Game Board HB	29 November, 11 & 17 July 2012	Fish & Game HB
Professional bodies (e.g. IPENZ HB, Contractors Federation)	July 12 – September 2012	HBRC
Maori Party	4 September 2012	Napier
HB Chamber of Commerce Business Breakfast	27 September 2012	Hastings
NZTA	4 October 2012	Napier
Sector Group Market/Science meetings including financial institutions (>100)	2010 – 2013	Various locations, New Zealand
Pan Sector Group meetings (6)	March 12 – January 13	Various locations, Napier
Meetings with Mana Whenua (>30)	2009 – 2013	Various locations, Hawke's Bay
Farm Advisors Forum	18 December 2012	Various locations, CHB
Farmer Forums	19 December 2012	Various locations, CHB
EPA	14 January 2013	Napier
DOC	28 January 2013	Napier
Business HB	14 February 2013	Hastings
Ingenium Conference	15 February 2013	Napier
Farmer Forum	15 February 2013	Tikokino
Farmer Forum	1 March 2013	OngaOnga

NZTA	6 March 2013	Napier
Zone M Headrace Meeting	8 March 2013	Otane
NKII Fish Hook Summit	7 March 2013	Napier
Mana Whenua hui-a-hapu	27 March 2013	Waipawa
Business after 5 Presentation	9 April 2013	Napier

28.4 Landowners in Main Scheme Infrastructure Areas

Landowner meetings have been scheduled as required throughout the course of the pre-feasibility and full feasibility phases of the Scheme in order to keep potentially affected landowners informed of progress and key decision points. A feature of the consultation process is that the changing dynamics of the Scheme since its inception has meant information has been quickly superseded. The importance of keeping all landowners in the region as up-to-date as possible on the Scheme has been an important albeit challenging objective.

At the end of the pre-feasibility phase of investigations one on one meetings were held with those that owned land in locations of the proposed storage sites to inform them of the Scheme. During the advanced pre-feasibility phase Council kept in telephone contact with landowners potentially affected by the Scheme and advised individuals as sites were discounted. The first HBRC-run landowner meeting was held at Ongaonga Golf Club on 31 May 2010, and was attended by approximately 50 landowners. During this key meeting, two landowner representatives (Andrew Watts and Duncan Holden) were voted onto the Ruataniwha Stakeholder Group to represent the interests of affected landowners from that point forward. Successive landowner meetings were held in January and July 2011 and March 2012 to update landowners affected by the dam/reservoir area on Scheme progress and to enable any concerns to be raised and addressed.

Tonkin & Taylor's Feasibility Project Description (June 2012) provided the certainty required, in terms of the proposed Zones A to D Primary Distribution System (headrace canal and primary pipe route), to enable Council to approach landowners potentially affected by the scheme distribution system; and one-on-one meetings with affected landowners on the proposed headrace route were carried out in July and August 2012.

During November and December 2012 further on-farm meetings were held with many of the landowners affected by the Zones A to D Primary Distribution System in order to refine the alignment further to accommodate landowner preferences. Based on these discussions the Scheme engineers were requested to amend the Zones A to D Primary Distribution System and this is reported and shown on 14 drawings in *Tonkin & Taylor (May 2013a)*.

In early 2013, HBRIC Ltd engaged The Property Group Ltd to assist with the landowner and property aspects of the Scheme and during the first half of March 2013 Graeme Hansen (RWSS Project Manager), and Rebecca Mackenzie from the Property Group met with all of the property owners within the dam and reservoir footprint and the Zone A to D Primary Distribution System at their properties. Follow-up meetings with several of the landowners on the Zones A to D Primary Distribution System continued through March and April 2013, with the result that further changes to the canal alignment have been made and an agreement to fully pipe the headrace in Zone A reached. These changes are reflected in the final Notice of Requirement Plans in *Part B*.

Further discussions were also held with all of the landowners surrounding the reservoir through March and April 2013 discussing detailed issues associated with the maintenance and potential enhancement of public access and areas that may be available for offsetting purposes.

These discussions have all been positive and are part of an ongoing process associated with property access and compensation.

28.5 Land Use Intensification Working Party

To assist HBRC and its consultancy team in the tasks associated with Land Use Intensification in particular, the Land Use Intensification Working Party, comprising nominated members of the Ruataniwha Stakeholder Group, HBRC Staff and consultants was established in November 2011. Ruataniwha Stakeholder Group members nominated onto the Working Party were Hugh Ritchie, Campbell Chard, Peter McIntosh, Benita Wakefield, and Tom Belford. The nominated Working Party members represented a range of interest groups; two farmer representatives (cropping and dairy), Fish & Game, Te Taiwhenua ō Tamatea, and a Lower Tukituki representative.

The primary objective of the group was to provide an interactive working forum to follow the development and application of the Ruataniwha Land Use Intensification Model; providing input into the development and testing of potential on-farm and off-farm means of managing and mitigating the effects of existing land use and intensification.

The group met on a monthly basis between January and August 2012, with two meetings held in August.

The group's final meeting for this phase of work was held on 17 August 2012. The Working Party prepared a report summarising their key findings and recommendations for future work around intensification, and this was presented to the Stakeholder Group at their 31 August 2012 meeting with the recommendations reported in the September 2012 Feasibility Report to Council.

These recommendations included:

- Convening a caucus of water quality experts to discuss nutrient management
- Reconvening the Working Party to work with the HBRIC team to provide input to proposed resource consent conditions.

At the 31 August 2012 Ruataniwha Stakeholder Group meeting all parties, apart from Fish and Game, participated in a process to capture the general position of the parties as reported in Appendix Four of the September 2012 Feasibility Report to Council.

At that same meeting all parties participating in the Land Use Intensification Working Party process have agreed with the working party's recommendations and signed off the final report with the exception of Fish and Game who made the following formal statement subsequent to the meeting.

“Hawkes Bay Fish and Game has not signed the final report from the Land Use Intensification Working Party. Fish and Game has concerns regarding some of the content including records of minutes, and the current proposed approach of the Regional Council to set in-stream nitrogen levels at toxicity standards. The report is a mix of process, administrative, and outcome statements which should stand on its own merit. Fish and Game has fully participated in the process from the outset, appreciates the efforts made by the Regional Council to engage, and will be confirming its position on the project at the appropriate time once it is fully informed on the issues.”

At the 14 December 2012 Ruataniwha Stakeholder Group meeting, parties interested in participating in a conditions reference group associated with Production Land Use conditions and the environmental mitigation and offset approach were asked to contact the RWSS project team. Several parties expressed interest in these ongoing consultative processes at the meeting and, subsequent to the meeting, Fish and Game sought involvement in both processes.

Due to the “holding stance” taken by Fish and Game in the prior collaborative processes described above the HBRIC team decided that it would be unfair to the other parties who had signed off on the Land Use Intensification Working Party recommendations to have Fish and Game at the table. Instead a Key Farmer Reference Group (discussed below) was established to be the sounding board for the proposed Production Land Use Consent conditions as they evolved through the early part of 2013.

It was made clear to Fish and Game that the organisation was welcome to participate in the environmental mitigation and offset process but they declined early in January 2013 stating:

“While Fish and Game has an interest in discussing potential mitigation options in regards to the Ruataniwha irrigation project, we are concerned that attempts to resolve a mitigation package and establish an implementation board at this stage in the process are premature.

The process of putting together a mitigation package requires a very clear understanding of the proposed activity, identification of the significance of adverse effects, whether those effects can be avoided or remedied, then finally identification of the remaining losses and application of a clear methodology to value those losses. Because the region has not produced an application yet, nor laid out the proposal in detail, or voted to lodge the Tukituki Plan, the impacts of the proposal remain uncertain, and a meaningful mitigation programme cannot be developed.

The technical work done to date is shallow at best and is a long way off defining the losses that will occur. For example, the region plans to inundate a scenic reserve, prevent fish passage, demolish a relatively rare remnant of forest type, remove the habitat for six endangered species, and further degrade water quality in the catchment. Impacts in relation to water quantity, hydrology, and Natural Character all remain uncertain.

While Hawkes Bay Fish and Game accept that a mitigation package will be required to address residual effects that cannot be avoided or remedied, it is our position that it needs to be evaluated in the light of the application you make. Following review of the final application, and supporting technical reviews, Hawkes Bay Fish and Game will be in a position to engage in an informed detailed discussion with the Regional Council around mitigation and offset packages.”

Subsequently the Managing Director of HBRIC Ltd invited Fish and Game to engage with the applicant following completion of the applications, this Assessment of Environmental Effects and the supporting reports to Final Draft stage, while the EPA undertook its pre- application completeness checks.

A meeting was held between HBRIC Ltd and Fish and Game representatives on 24 April 2013 where it was agreed to record that the parties were back in discussions regarding the Scheme and Change 6.

28.6 Mana Whenua

Having local Mana Whenua representatives on the Stakeholder Group, and Professor Roger Maaka as a member of the Leadership Group, has allowed for good communication with Mana Whenua

throughout the feasibility stage of the RWSS. HBRC's Maori Committee, and the recently expanded Regional Planning Committee, has provided two further forums for sharing of information.

A number of Maori organisations have been engaged in the RWSS over time:

- **Rakautatahi, Rongo o Tahu (Takapau area), Mataweka and Tapairu (Waipawa area) marae** – represent Mana Whenua within the Scheme area and have all marae have been visited with presentations provided and an opportunity provided to ask questions. These marae are also represented by members of the Mana Whenua Working Party.
- **Te Taiwhenua ō Tamatea** – represent all Central Hawke's Bay marae and has been represented on the Ruataniwha Stakeholder Group
- **Te Taiwhenua ō Heretaunga** – represent all marae in the Lower Tukituki catchment
- **He Toa Takitini** – are the claimant group for the Hastings and Central Hawke's Bay marae. This group will eventually be replaced by a post-settlement governance entity, which will provide the vehicle by which any settlement sponsored investment would be channelled. It is estimated that settlement will take place around 2013-14
- **Ngati Kahungunu Iwi Incorporated (NKII)** – manages fisheries assets on behalf of iwi and has a holding company that deals with NKII investments. The group is interested in water management in general and has a representative on the Mana Whenua Working Party. The group may also have a future interest in investing
- **Aorangi Maori Trust Board** – formed in 1958. The Board manages assets on behalf of the Takapau hapu that came from compensation for the Aorangi land block (land around Oruawharo). The Board has no current interest in the Scheme but as a statutory body that represents local hapu, may potentially be an investor in future.

Two Cultural Impact Assessments (CIAs) were initially completed during the advanced pre-feasibility phase of the Scheme, providing technical information from a tikanga Tangata whenua perspective and identifying areas of cultural significance within the footprint of the proposed storage area.

In June 2012 a '*Cultural Values and Uses of the Tukituki Catchmen*' report (*Te Taiwhenua ō Tamatea and Te Taiwhenua ō Heretaunga, June 2012*) was completed. The report, which was jointly commissioned as part of the Change 6 and the RWSS feasibility processes, was completed by Te Taiwhenua ō Tamatea in partnership with Te Taiwhenua ō Heretaunga. The assessment report describes the cultural values and uses of the wider Tukituki River and Catchment, pulling together the key points and recommendations from the two previously completed CIAs also. As part of this process Te Taiwhenua ō Heretaunga produced their own report entitled '*Ko Wai Ka Hua – Cultural*

Values and Uses, Cultural Impact Assessment Report of the Lower Tukituki Catchment' (Te Apatu & Moffat, 2012). The key findings of this report were presented to the Stakeholder Group at their meeting of 14 June 2012 by Marei Apatu and Dale Moffatt from Te Taiwhenua o Heretaunga.

The presentation highlighted the relationship of all hapu residing in the Tukituki catchment, emphasising that the importance of the Awa cannot be differentiated between the upper and lower catchments of the river. The importance to Maori in being able to express their relationship and values within the Tukituki River Catchment through concepts such as mauri, mana whenua and kaitiakitanga was also acknowledged.

At the 27 July 2012 Ruataniwha Stakeholder Group meeting the co-ordinating author for the '*Cultural Values and Uses of the Tukituki Catchment'* report, Dr Benita Wakefield provided an overview of the report and answered a number of questions regarding the Scheme from the Mana Whenua perspective.

At a meeting in November 2012 involving representatives of HBRIC Ltd, Te Taiwhenua o Tamatea and Te Taiwhenua o Heretaunga, a working party was established to advise on how best to implement the recommendations associated with the Scheme that are discussed in the preceding sections.

Working party members were agreed as follows:

Member	Background
Professor Roger Maaka	Rongo o Tahu Marae representative and Chair of Te Taiwhenua o Tamatea. Spokesman for the four CHB Marae (two each in Waipawa and Takapau)
Dr Adele Whyte	Director of Fisheries and Environment, Ngati Kahungungu Iwi Incorporated
Peter Paku	Ruahapia Marae, Te Taiwhenua o Heretaunga
Des Ratima	Nga Marae o Heretaunga
Mike Mohi	HBRC Maori Committee Chairman Nga Whenua Rahui
Brian Gregory	Tapairu Marae
Graeme Hansen	Group Manager – Water Initiatives HBRC RWSS Project Manager, HBRIC Ltd

Stephen Daysh	Director Environmental Management Services Limited Consenting Manager for RWSS
Martell Letica	Senior Consents Officer HBRC Secondment to RWSS Project Team, HBRC

The Working Party objectives have been agreed as:

- To provide a forum for discussing the recommendations associated with the proposed RWSS contained in the "*Tukituki River Catchment Cultural Values and Uses*" Report, June 2012.⁵⁹ Three prior cultural evaluation and assessment reports⁶⁰ gave background to this June 2012 report
- To facilitate any necessary presentations to the Working Party from experts associated with effects of specific interest to Mana Whenua
- To prepare an agreement between the parties, including:
 - An agreed position on how to appropriately implement the '*Tukituki Catchment Cultural Values and Uses*' Report recommendations (including, but not limited to, resource consent conditions)
 - Defining employment and economic opportunities which may be able to be accommodated through the RWSS.

During the early part of 2013 HBRIC's proposals for water distribution within Zone M were developed and this is reported in *EMS (May 2013a)*. A draft of that report was circulated for landowner and Mana Whenua consultation purposes at the end of February 2013 and an on-site meeting held on 8th March 2013. Following that meeting it was agreed with the Mana Whenua that a further CIA addendum should be prepared for the Zone M / Papanui Stream area and this has been completed (refer to Section 18.6 of this document).

The work of the Mana Whenua Working Party is ongoing at the time of lodging these applications. It had initially been planned to conclude this with a Working Party Report at the end of April 2013 but at a meeting held on 4 April 2013 the working party members agreed that the working party process

⁵⁹ This report is included in the suite of documents accompanying this application as *Te Taiwhenua o Tamatea and Te Taiwhenua o Heretaunga June 2012*

⁶⁰ "*Cultural Impact Assessment of the Tukituki Proposed Water Storage Dams*" 10 September 2010

"*Cultural Impact Assessment of the Tukituki Proposed Water Storage Dams: Supplementary Report on the Mākaretu and Mākāroro Proposed Dam Sites*", March 2011

"*Cultural Values and Uses, Cultural Impact Assessment Report of the Lower Tukituki Catchment*" May 2012

"*Ko wai ko hua – Tukituki River Catchment Cultural Values and Uses*", June 2012

should be extended to the end of June 2013 to provide more time to carry out some face to face hui at those marae with an association with the Tukituki River.

At the previous meeting held on 21 March 2013 a number of matters were discussed as items which could form an MOU / Agreement in terms of Mana Whenua interests. These included:

- a) The promotion of resource consent conditions by HBRIC Ltd to cover involvement of Mana Whenua in cultural monitoring, accidental discovery processes and environmental matters
- b) The provision for employment and business opportunities in the D&C contract phase
- c) Giving Mana Whenua “first right” to undertake the kaitiaki contracts outlined in the Integrated Mitigation and Offset Approach (*HBRIC – May 2013f*)
- d) Provision for training scholarships
- e) The avoidance of commercial / monopoly ownership of the Scheme with a desire to have ownership in Council / Maori control in the long term.

These matters are all part of an on-going discussion with the Mana Whenua Working Party, with an expectation that an agreement may be able to be reached prior to submissions closing on the Scheme applications.

Although represented on the Mana Whenua Working Party, Ngati Kahungunu Iwi Incorporated has recently sought to engage separately with HBRIC Ltd. The initial correspondence emphasised the need for Ngati Kahungunu Iwi Incorporated to be able to communicate with Iwi, Hapu and Whanau regarding all aspects of the scheme and sought a six month deferral of submission of the Scheme applications. This has not been agreed as HBRIC Ltd saw the extended working party process as an appropriate means of further engagement. Subsequently Ngati Kahungunu Iwi Incorporated has sought the opportunity to meet face to face with Directors of HBRIC Ltd and this is being planned for the near future.

28.7 Pan Sector Group

A Pan Sector group was established in early 2012 to facilitate input into the RWSS and the proposed Change 6 processes, by industry and academic organisations. At a high level, the group's role is to assist and coordinate the maximum sustainable benefit from the Ruataniwha Plains, recognising that a collaborative approach is required to realise the potential environmental, economic and social gains possible for the region.

The group includes representatives from: Fonterra, Silver Fern Farms, McCain Foods, Foundation for Arable Research, AgResearch, Massey, Ministry of Primary Industries, Zespri, HortNZ, Federated

Farmers, DairyNZ, Beef and Lamb, Heinz Watties, Fert Research, Plant & Food, Irrigation NZ, PipFruit NZ, Rural Futures, NZ Wine Growers, and HB Fruit Growers; as well as Hawke's Bay farmers.

Since its establishment, the group has been actively involved in the land use intensification work, and in developing the nutrient management framework proposed through the Change 6 process. The Pan Sector group has met on six occasions to-date, and this group has been a key forum for HBRC and HBRIC Ltd to discuss the Tukituki Choices / Plan Change process and the development of potential resource consent conditions for the Scheme associated with nutrient control and management.

At the November 2012 meeting of the Pan Sector Group a preliminary Production Land Use consent condition concept was tabled and discussed with general agreement expressed by the group in relation to the proposed approach. This was further refined with a draft of the proposed Production Land Use consent conditions tabled and discussed at the February 2013 meeting of the Pan Sector Group. Again, the approach was generally ratified with a commitment made to circulate the relevant draft conditions (Schedule Three in *Part D* of the RWSS resource consent application suite) at the same time as the final draft documents are circulated to the EPA for its completeness check.

The Final Draft Schedule Three Conditions were circulated to the Pan Sector group members and feedback received on some aspects from Irrigation New Zealand and Dairy NZ.

28.8 Key Farmer Reference Group

In January 2013, HBRIC established a Key Farmer Reference Group to discuss the proposed Production Land Use consent conditions and potential incentives for existing irrigators to transition to the Scheme if it is developed. An advanced draft of Schedule 3 of the proposed conditions was circulated prior to the initial meeting of this Group held on 11 February 2013 where support for the approach was expressed. At a follow up meeting on 25th February 2013 members of the Group reconfirmed their support for the overall approach.

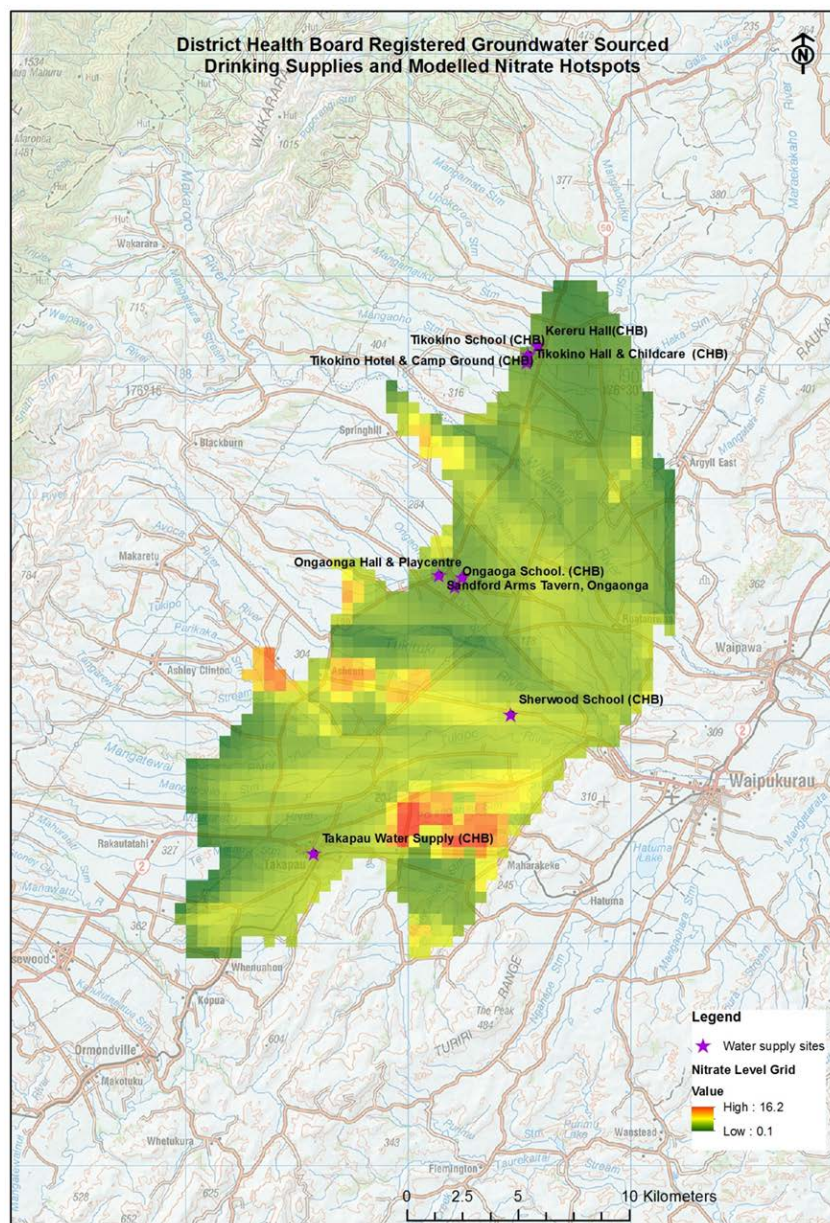
28.9 Hawke's Bay District Health Board

Following completion of *Part D- Proposed Conditions* to Final Draft stage in mid-March 2013, Dr Nick Jones of the Hawke's Bay District Health Board provided HBRIC Ltd with comments, queries and suggestions on a number of aspects of the draft conditions as they relate to public health issues - principally regarding potential nitrate contamination of groundwater utilised for drinking water supplies and *Phormidium* accumulation in the rivers used for contact recreation. Dr Jones also had

suggestions as to how the approach taken to different contaminants resulting from land intensification might be made more consistent and effective.

As a result of Dr Jones input a number of changes have been made to the proposed conditions in *Part D* lodged with the EPA.

In relation to potential contamination of registered drinking water supplies, a plan was compiled superimposing the location of the relevant water supplies on the model outputs discussed in Section 13 above. This figure below shows a low potential for contamination of registered drinking water supplies.



Dr Jones also queried the groundwater position in relation to Zone M. Although there are data of existing groundwater in Zone M there is insufficient data to model groundwater in Zone M. HBRIC Ltd's investigations confirmed that the water supply for Otane is a shared supply with Waipawa drawn from a bore well upstream of the proposed irrigation zone. Available databases did not identify any public human drinking water supplies within or immediately down-gradient of the Zone M area.

28.10 Outcomes of Consultation

The outcomes of consultation undertaken through the processes outlined above are summarised as follows:

- a) Input to a Scheme shaping through the early appointment and involvement of the Leadership Group
- b) Communication with and input from the Ruataniwha Stakeholder Group through 19 meetings held in Waipawa starting in May 2010, including agreement of the group to the range and content of the environmental studies undertaken to support the feasibility decision
- c) Active involvement of the environmental groups on the Ruataniwha Stakeholder Group in the development and prioritisation of elements of the five proposed Integrated Mitigation and Offset projects (which is still on-going as at the date of lodgment of these applications)
- d) Numerous meetings, presentations and discussions with a wide range of community groups
- e) Regular briefings with landowners on whose properties Scheme infrastructure will be located to assist with refining the primary distribution system and to form a basis for land access agreements
- f) Involvement of nominated members of the Ruataniwha Stakeholder Group in the Land Use Intensification Working Party process
- g) The convening of a Mana Whenua Working Party to provide a forum for Mana Whenua represented by a number of groups to work with HBRIC Ltd representatives to develop effective ways of addressing the recommendations of the various cultural impact assessments which have been prepared for the Scheme.
- h) Input from a Pan Sector group into the development of the proposed conditions for the management of the Production Land Use element of the Scheme, as part of a wider brief which also assisted HBRC with the approach to limit setting developed for Change 6

- i) Feedback from a Key Farmer Reference Group into the details of the proposed conditions for the management of the Production Land Use element of the Scheme, as these were being drafted
- j) Liaison with the Hawke's Bay District Health Board in the drafting of proposed conditions associated with Public Health matters.