

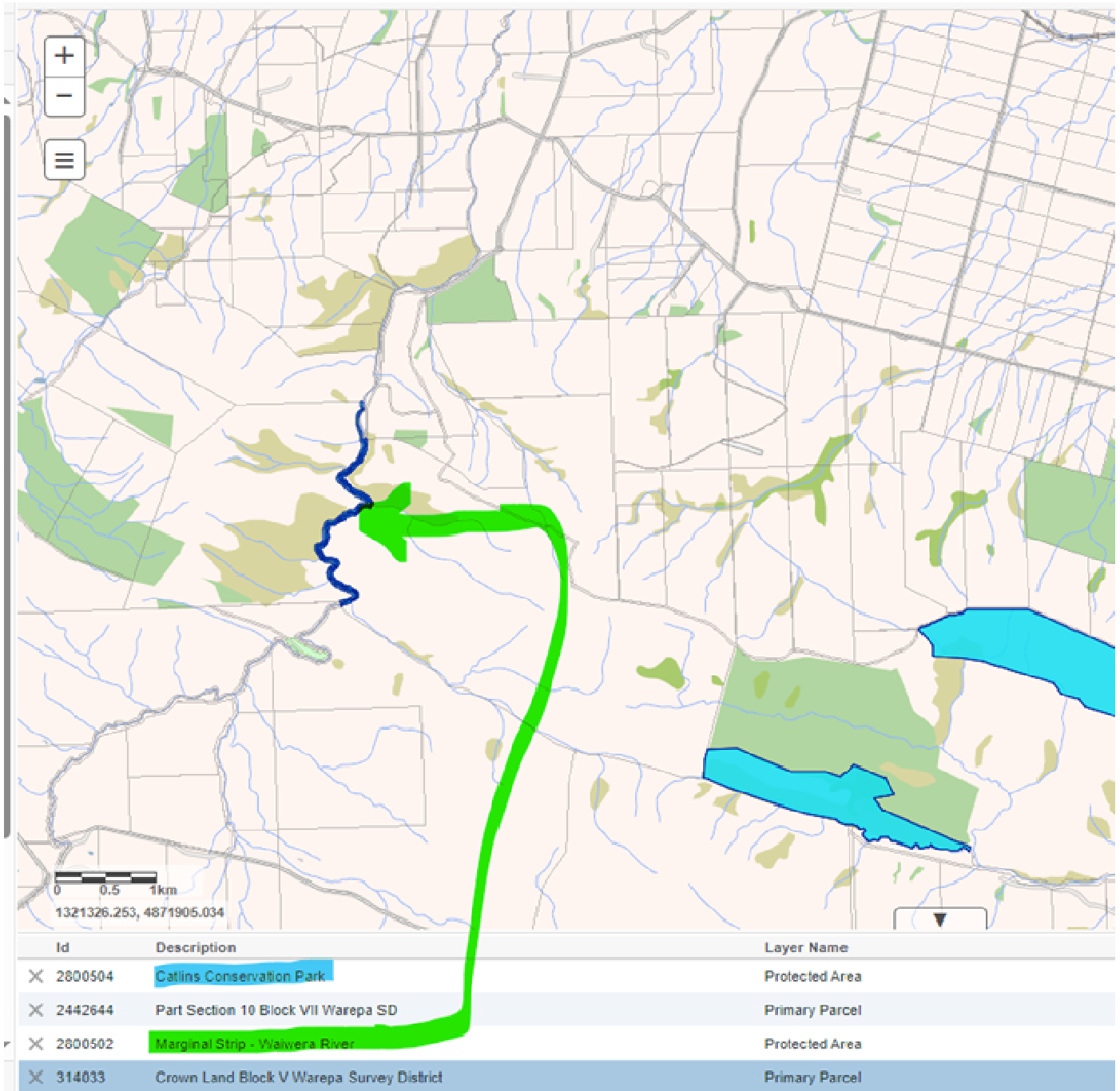
Jacob Paget

From: s 9(2)(a)
Sent: Monday, 27 May 2024 4:30 pm
To: Listed Projects
Cc: Meredith Lawry; Herb Familton; Donna Shepard; John McCarroll
Subject: [IN-CONFIDENCE]Feedback on Kaihiku Wind Farm FTA057

Hi Rob

The Department of Conservation has been discussing the proposed Kaihiku Wind farm proposal with the combined Manawa/ Pioneer Energy for approximately a year. We have not been on site but have been providing comments on this proposal and two other Wind Farms in Southland (Jericho and Mimihau, which is reasonably close to Kaihiku). Our discussions on Kaihiku are at a far earlier stage than the other two.

The information provided does not specify the outline and location of activities within the project area. Within that area, we have identified four blocks of public conservation land; two isolated parts of the Catlins Conservation Park and a marginal strip adjacent the Waiwera River and a small piece of stewardship land within a loop of that river (Sec 12 Blk IX Kuriwao SD), shown in the map excerpt below. These may require conservation concessions if directly affected. None of these are ineligible for Fast Track consideration.



There definitely will be Long tailed bat and Lizard Wildlife Act approvals required, with the area likely also used by species such as falcons. Fish Passage approvals under the Freshwater Fish regulations may be required, depending on any in stream works proposed, (which again are not detailed).

We can advise that this area is covered by the Ngāi Tahu Claims Settlement Act 1998. We would recommend contacting local iwi or rūnaka representatives for their views, especially in respect of public conservation land which may be in scope, or in respect of taonga species potentially affected.

Regards

Neil Deans

Advisor – RM Reform

Department of Conservation—*Te Papa Atawhai*

Level 2, Conservation House, Wellington 6143

s 9(2)(a)

Conservation leadership for our nature

Tākina te hī, tiakina te hā, o te ao tūroa

Caution - This message and accompanying data may contain information that is confidential or subject to legal privilege. If you are not the intended recipient you are notified that any use, dissemination, distribution or copying of this message or data is prohibited. If you received this email in error, please notify us immediately and erase all copies of the message and attachments. We apologise for the inconvenience. Thank you.