

Figure 1. Context.



Legend.




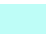


	Marine Farm Existing Location
	Marine Farm Proposed Location
	Contours 1:250 000
	High Coastal Natural Character Rating As per MEP
	Very High Coastal Natural Character Rating As per MEP
	Outstanding Natural Character Rating As per MEP



Figure 2. Coastal Natural Character.

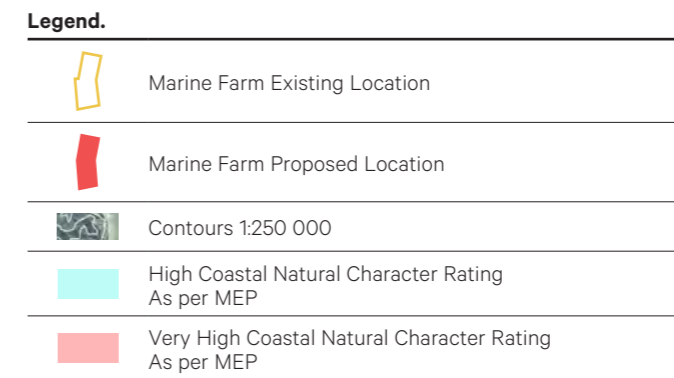
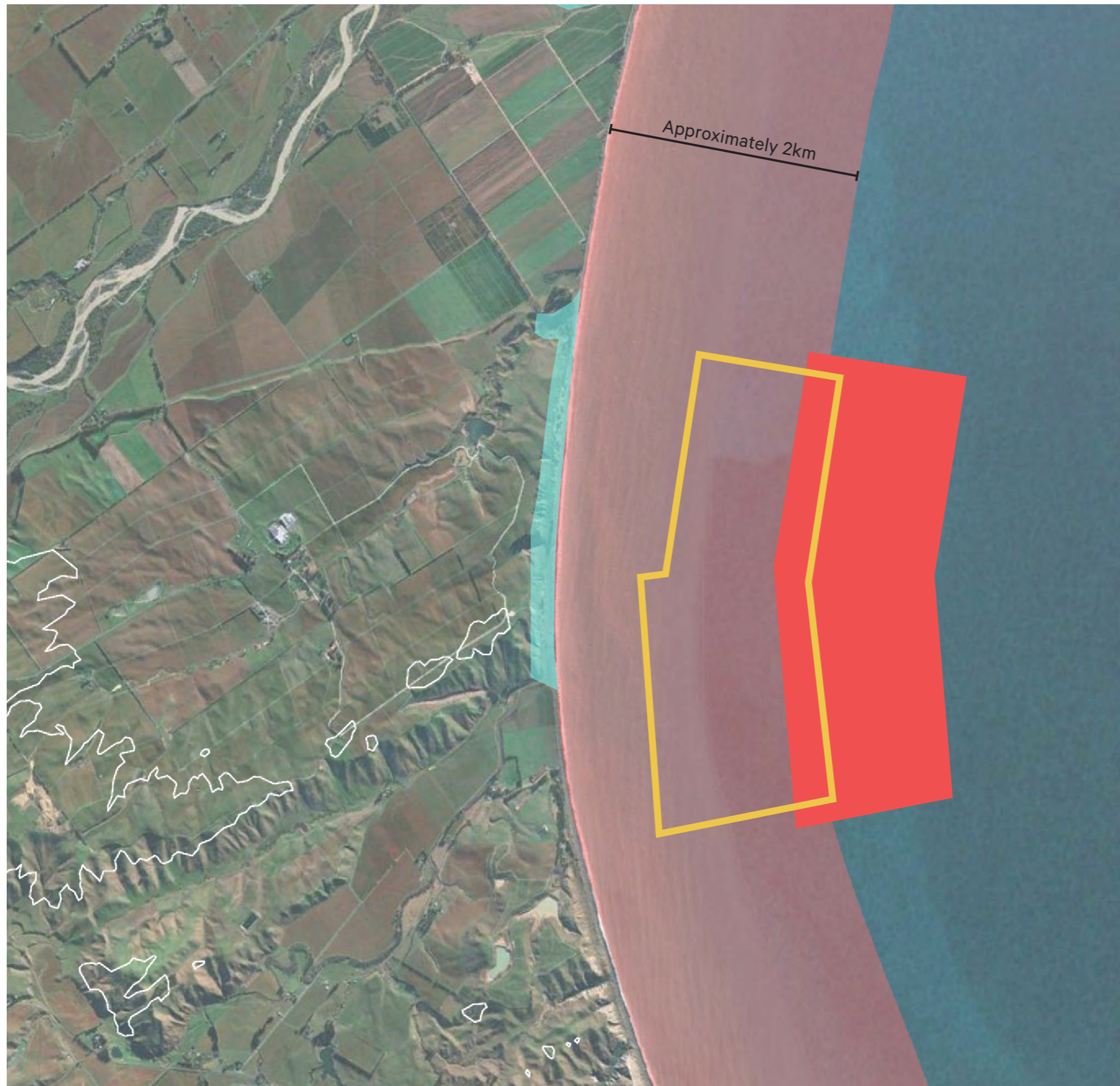


Figure 3. Immediate Context.

NOTE: Figures 4 and 5 are indicative and have been provided to illustrate the differences between conventional and submerged mussel farming as they relate to landscape and visual matters.

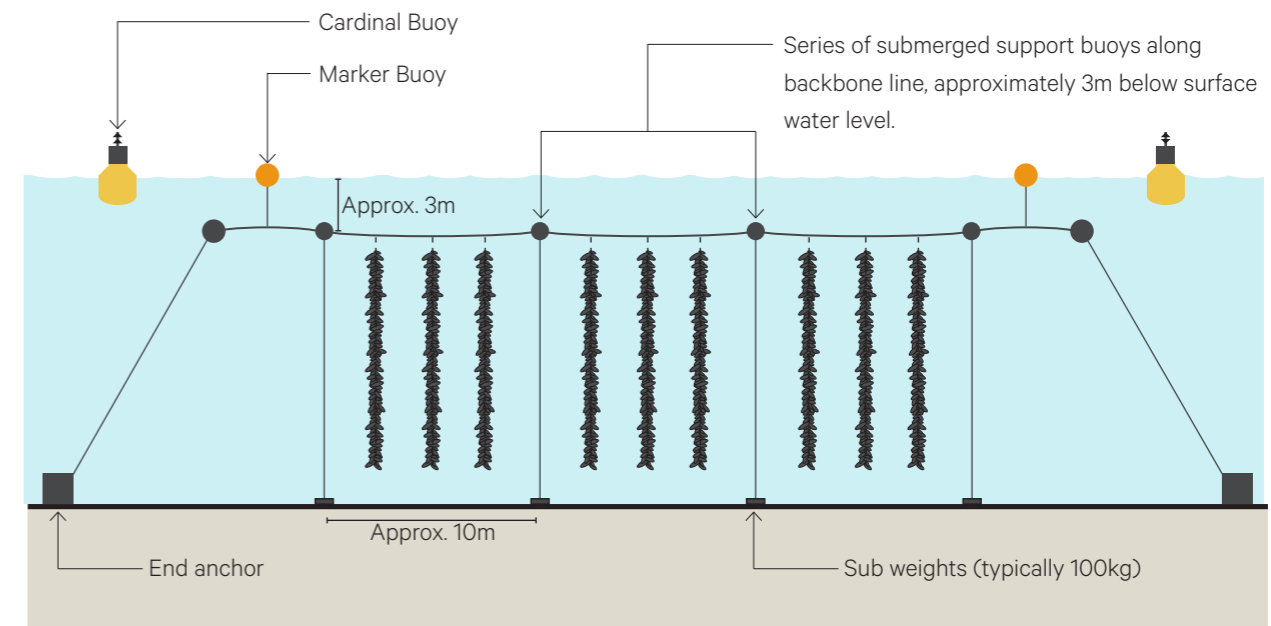
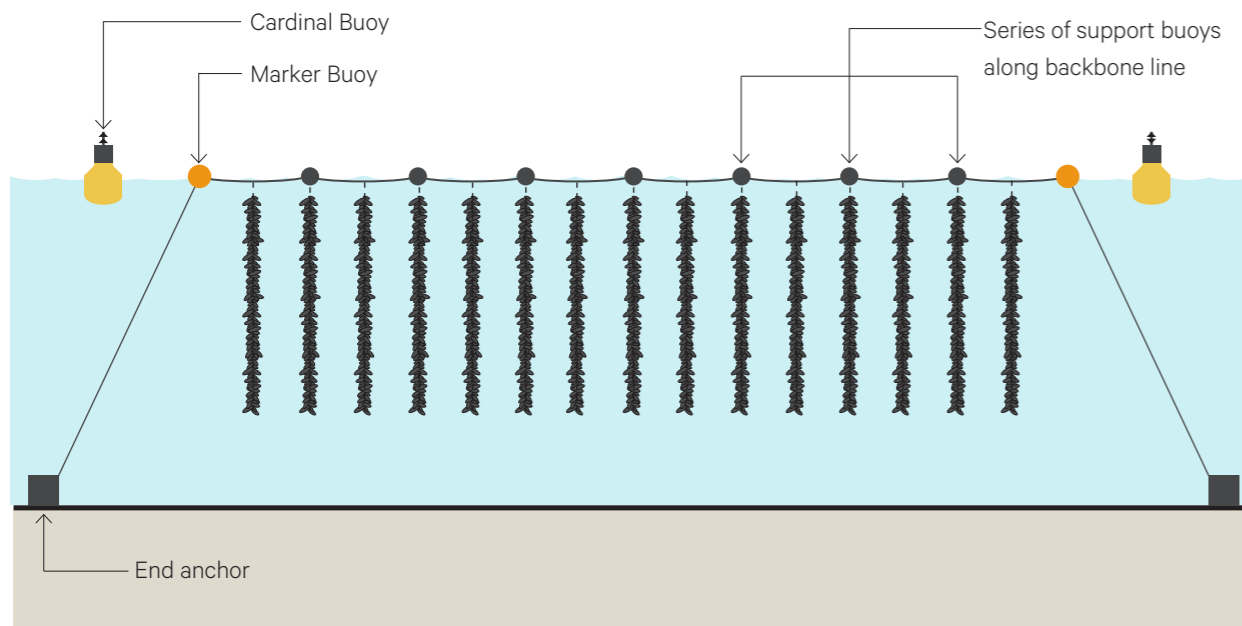


Figure 4. Indicative Illustration of Typical Conventional Mussel Farming.

Conventional mussel farming includes lengths of buoys on the surface of the water used to support crop. Buoys are more buoyant (and therefore more visible) when crop is lighter, or once crop has been harvested.

Figure 5. Indicative Illustration of Typical Submerged Mussel Farming

Submerged mussel farming includes submerged buoys along the backbone line, which are anchored with a series of sub weights. Sub weights are lifted at times of harvesting and maintenance. Submerged mussel farming is more visually discrete with fewer elements on the surface of the water.