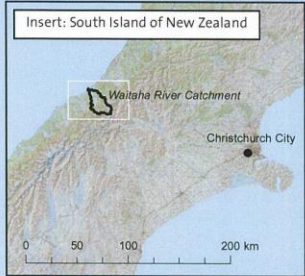
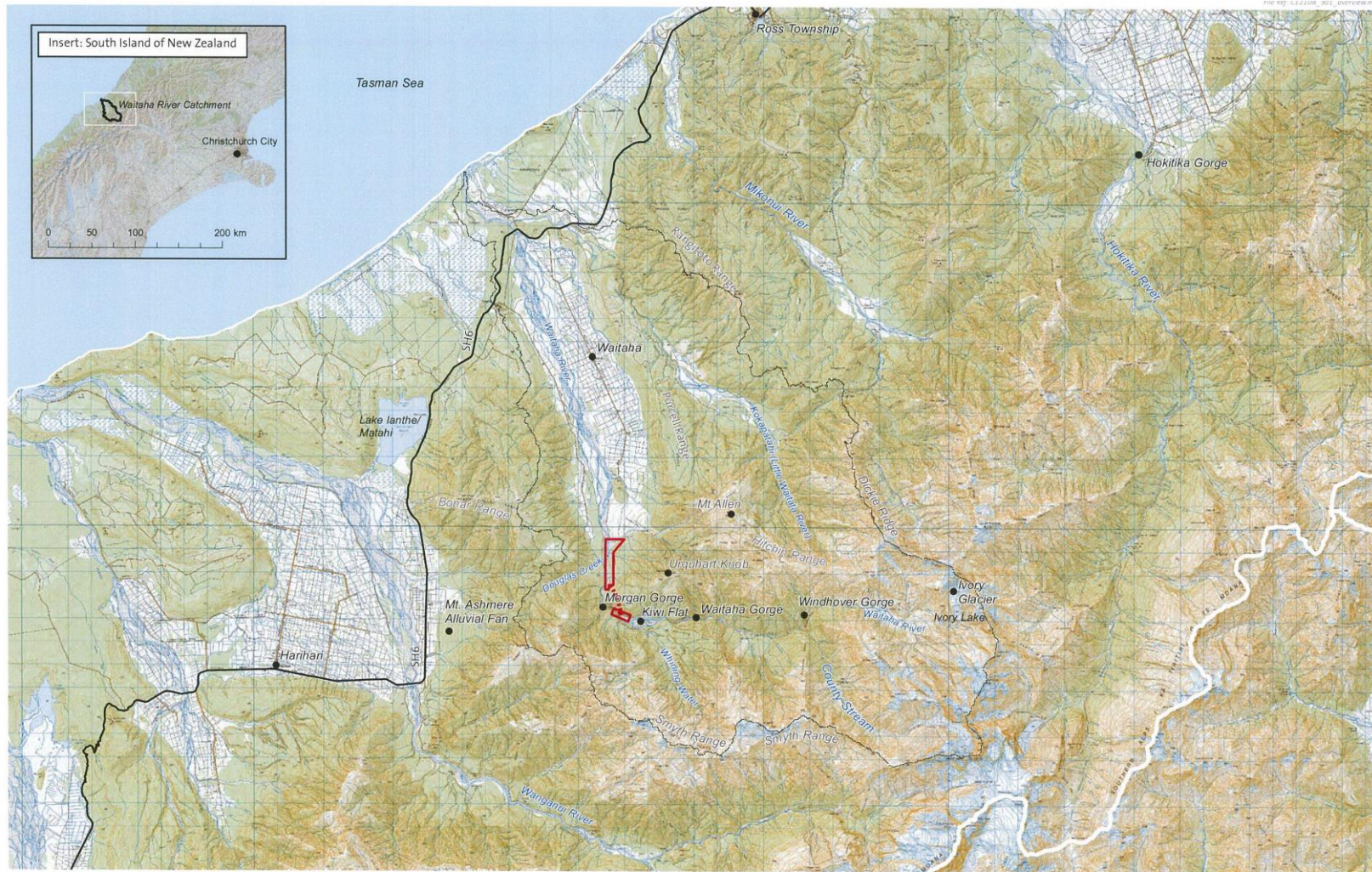


# ATTACHMENT 1 – PROJECT LOCATION DETAILS



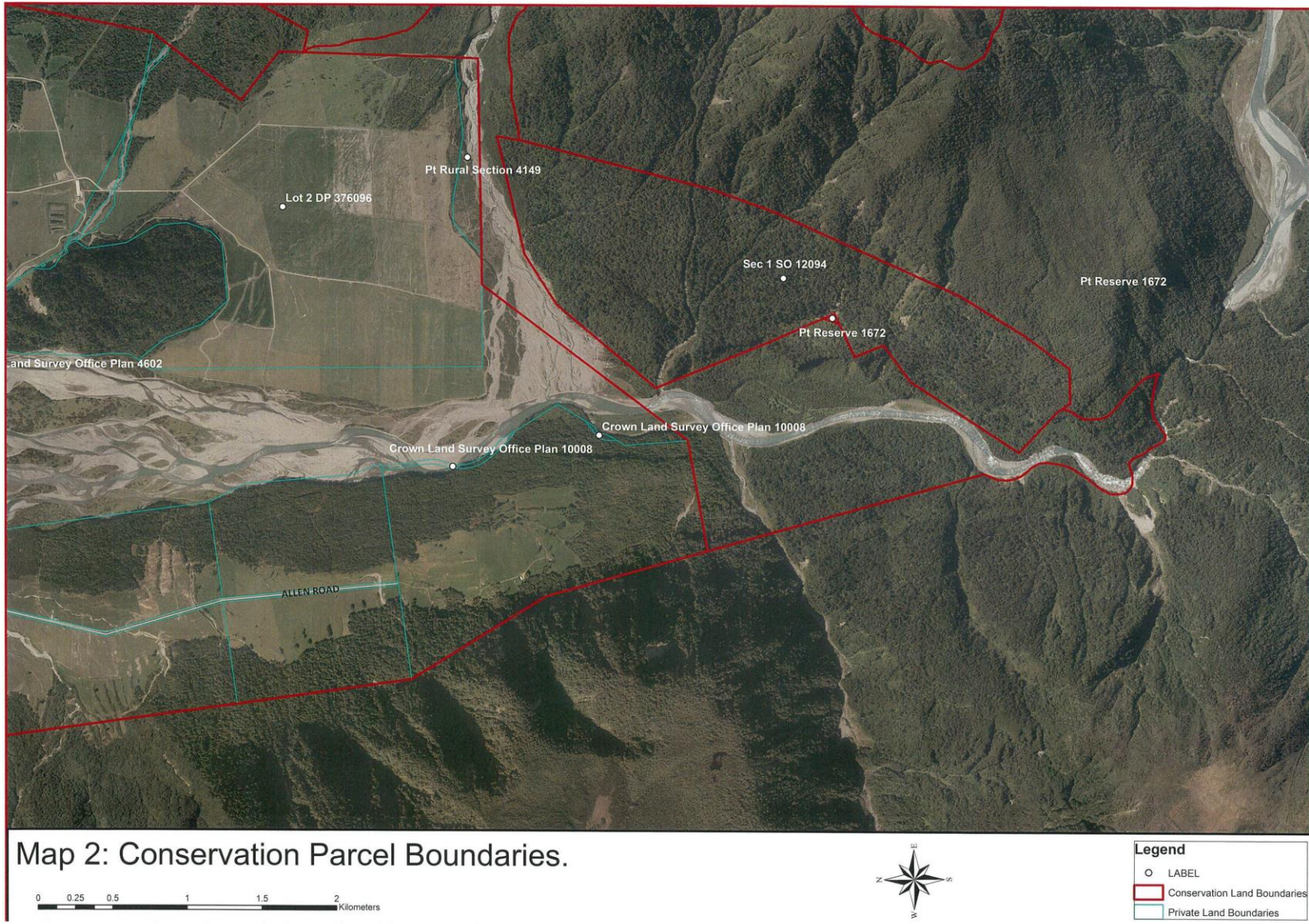
This graphic has been prepared by Boffa Miskell Limited on the specific instructions of our Client. It is issued for our Client's use in accordance with the agreed scope of work. Any use or reliance by a third party is at that party's own risk. Where information has been supplied by the Client or obtained from other external sources, it has been assumed that it is accurate. No liability or responsibility is accepted by Boffa Miskell Limited for any errors or omissions to the extent that they arise from inaccurate information provided by the Client or any external source.

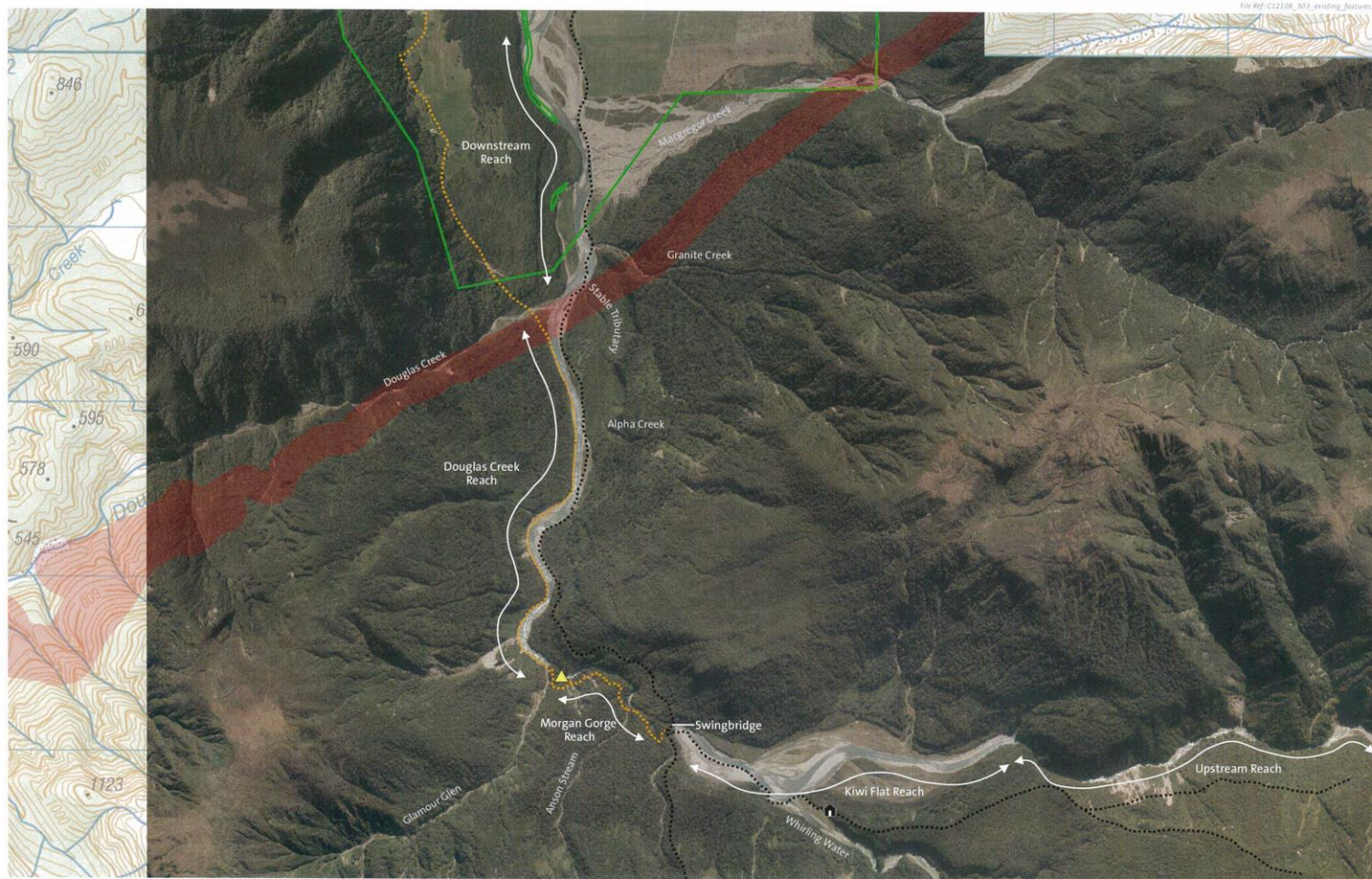


Data Sources:  
 Map sourced from Topo50 Map, Crown Copyright Reserved.  
 Map sourced from Topo250 Map, Crown Copyright Reserved.  
 NZREC Watersheds from sourced from MFE, Crown Copyright Reserved

- Legend
- Scheme Location
  - NZ State Highway Centrelines (Sept 2011)
  - Waitaha Catchment
  - Westland District Boundary

Waitaha Hydro  
 Map 1: General Area  
 Date: 3 June 2014 | Revision: 3  
 Plan Prepared by Boffa Miskell Limited  
 Author: sally.bishop@boffamiskell.co.nz | Checked: GWH





This graphic has been prepared by Boffa Miskell Limited on the specific instructions of our Clients. It is solely for our Clients use in accordance with the agreed scope of work. Any use or reliance by a third party is at that party's own risk. Where information has been supplied by the Client or obtained from other external sources, it has been assumed that it is accurate. No liability or responsibility is accepted by Boffa Miskell Limited for any errors or omissions to the extent that they arise from inaccurate information provided by the Client or any external source.



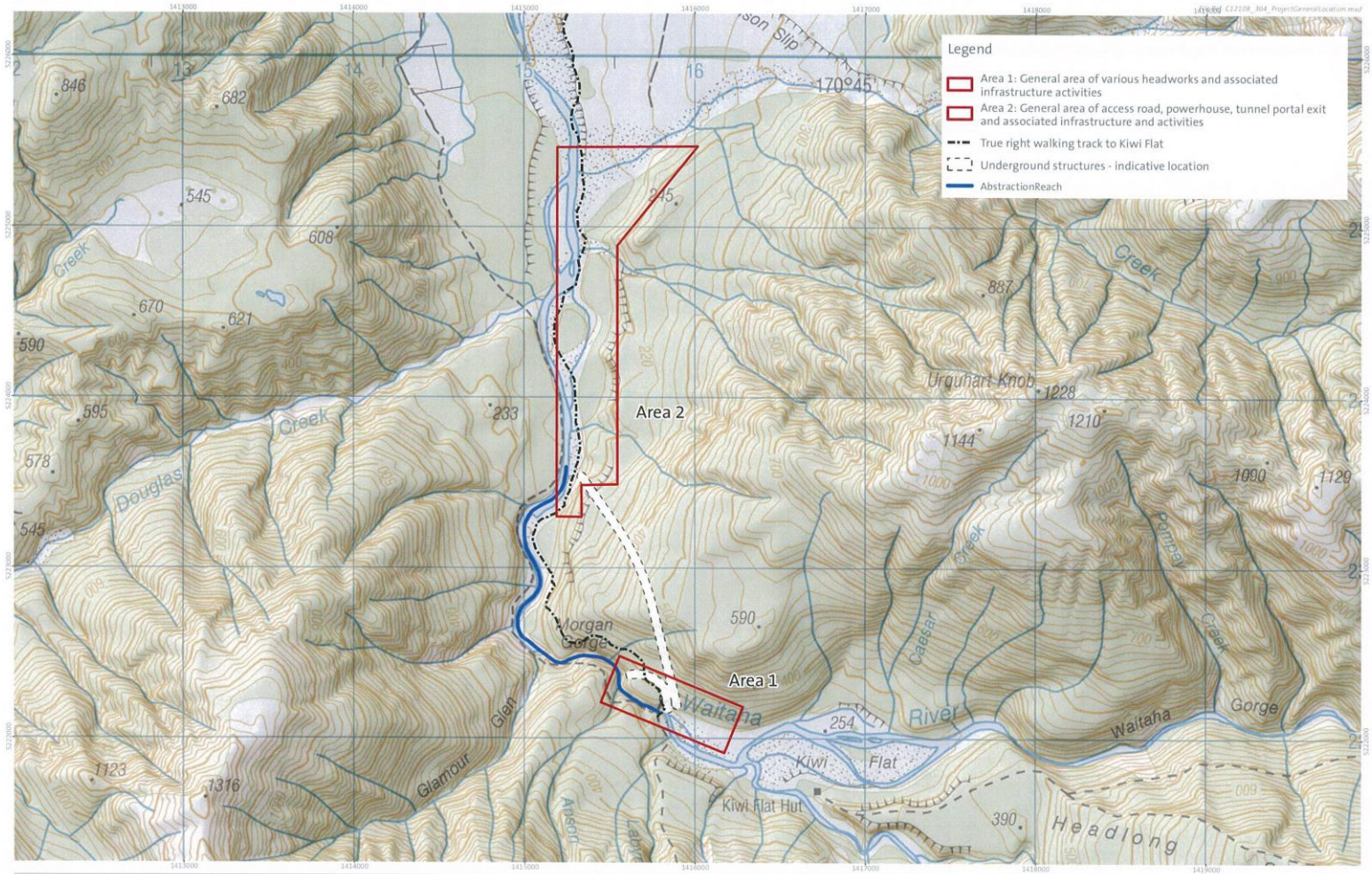
0 1 km  
1:20,000 @ A3

Data Sources: Aerial imagery supplied by Electronet, flown between 2010 and 2012 by New Zealand Aerial Mapping Limited. Fault avoidance zone digitized by Boffa Miskell from WDC webmap data.  
Projection: NZGD 2000 New Zealand Transverse Mercator

Legend

- Existing Walking Tracks
- Old Walking Track to Kiwi Flat
- ▲ Hot Springs
- 🏠 Kiwi Flat Hut
- 📏 Fault Avoidance Zone (indicative)
- 🟩 DOC Boundary

Waitaha Hydro  
Map 3: Existing Features - Waitaha River  
Date: 3 June 2014 | Revision: 4  
Plan Prepared by Boffa Miskell Limited  
Author: coreymurray@boffamiskell.co.nz | Checked: GWN



This graphic has been prepared by Boffa Mistek Limited on the specific instructions of our Client. It is solely for our Client's use in accordance with the agreed scope of work. Any use or reliance by a third party is at that party's own risk. Where information has been supplied by the Client or obtained from other external sources, it has been reviewed but it is accepted, in full or in part, as provided by the Client and Boffa Mistek Limited for any errors or omissions to the extent that they arise from inaccurate information provided by the Client or any external source.

**Data Sources:** topographical map sourced from LINZ topoSd map series. Crown copyright reserved.

**Projection:** NZGD 2000 New Zealand Transverse Mercator

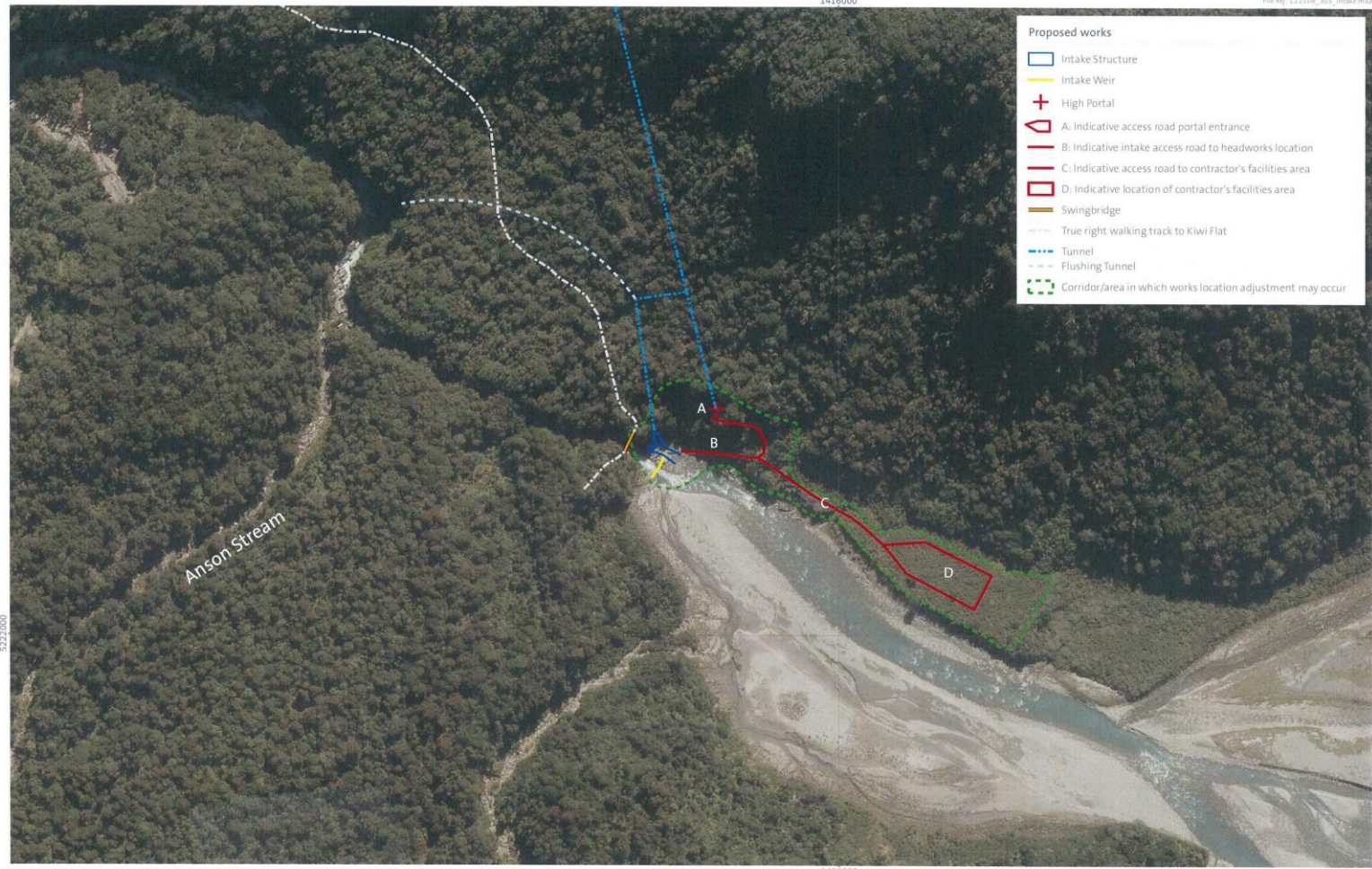
Scale: 1:20,000 @ A3

0 1 km

Waitaha Hydro  
**Map 4: Project Area General Location**  
 Date: 3 June 2014 | Revision: 3  
 Plan Prepared by Boffa Mistek Limited  
 Author: coreymurray@boffamiskell.co.nz | Checked: GWH

1416000

File Ref: C12108\_305\_intake.mxd



- Proposed works**
- Intake Structure
  - Intake Weir
  - + High Portal
  - ⬠ A: Indicative access road portal entrance
  - B: Indicative intake access road to headworks location
  - C: Indicative access road to contractor's facilities area
  - ⬠ D: Indicative location of contractor's facilities area
  - Swingbridge
  - - - True right walking track to Kiwi Flat
  - - - Tunnel
  - - - Flushing Tunnel
  - - - Corridor/area in which works location adjustment may occur

Anson Stream

5222000

5222000

1416000

This graphic has been prepared by Boffa Miskell Limited on the specific instructions of our Client. It is solely for our Client's use in accordance with the agreed scope of work. Any use or reliance by a third party is at that party's own risk. Where information has been supplied by the Client or any other external source, it has been assumed that it is accurate. No liability or responsibility is accepted by Boffa Miskell Limited for any errors or omissions, by the Client or any other external source.



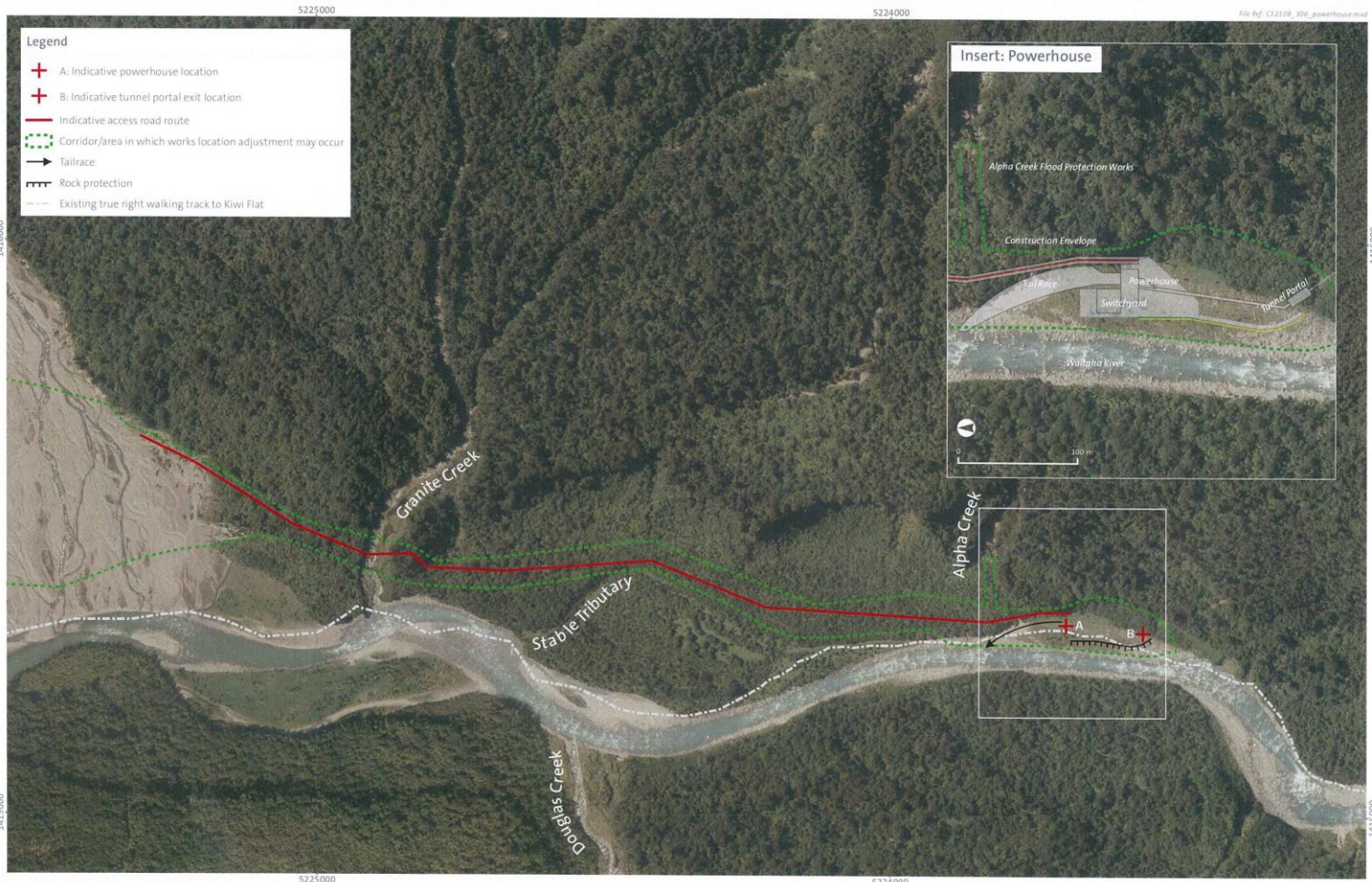
Data Sources: Aerial imagery supplied by Electronet, flown between 2010 and 2012 by New Zealand Aerial Mapping Limited.  
 Projection: NZGD 2000 New Zealand Transverse Mercator

Waitaha Hydro

Map 5: Area 1 - Infrastructure Locations above Morgan Gorge

Date: 5 June 2014 | Revision: 5

Plan Prepared by Boffa Miskell Limited  
 Author: coreymurray@boffamiskell.co.nz | Checked: GWH



This graphic has been prepared by Boffa Miskell Limited on the specific instructions of our Client. It is solely for our Client's use in accordance with the agreed scope of work. Any use or reliance by a third party is at that party's own risk. Where information has been supplied by the Client or obtained from other external sources, it has been assumed that it is accurate. No liability or responsibility is accepted by Boffa Miskell Limited for any errors or omissions in the extent that they arise from inaccurate information provided by the Client or any external source.

0 200 m  
1:6,000 @ A3  
Data Sources: Aerial imagery supplied by Ectromet, flown between 2010 and 2012 by New Zealand Aerial Mapping Limited.  
Projection: NZGD 2000 New Zealand Transverse Mercator

Waitaha Hydro  
Map 6: Area 2 - Infrastructure Locations below Morgan Gorge  
Date: 3 June 2014 | Revision: 5  
Plan Prepared by Boffa Miskell Limited  
Author: corey.murray@boffamiskell.co.nz | Checked: GWH

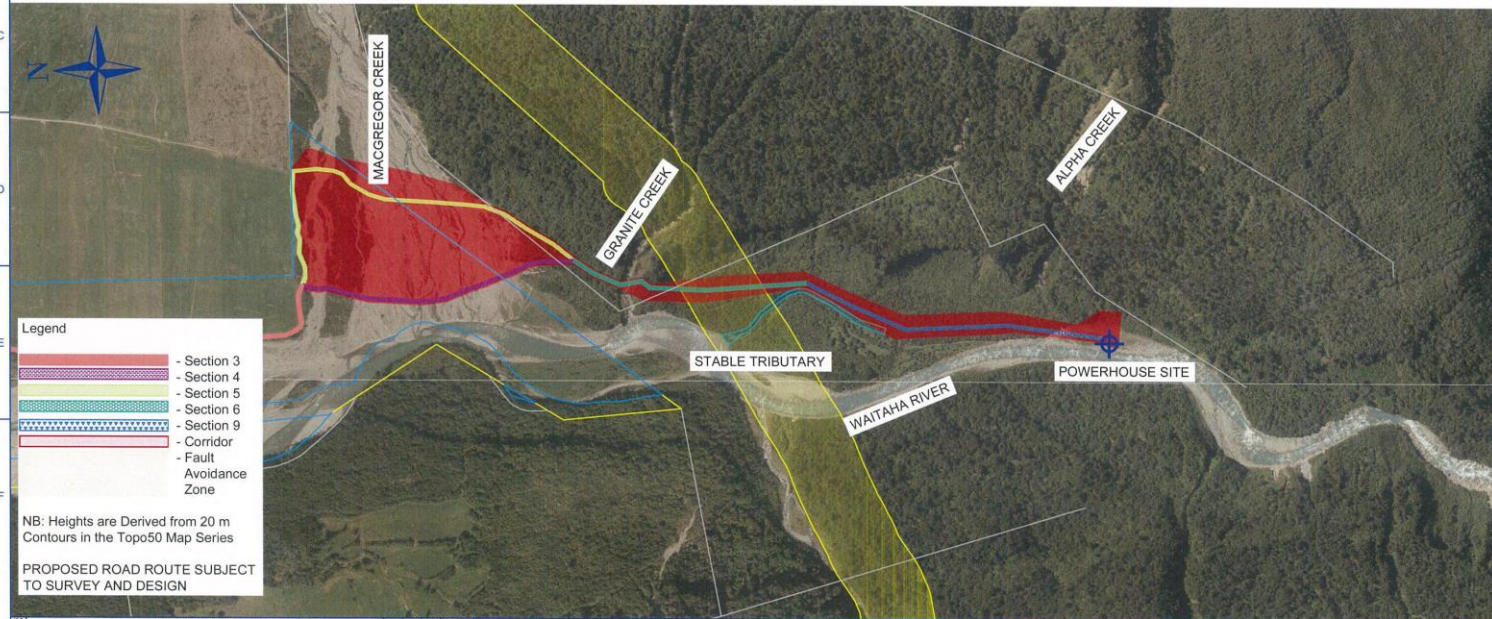
© COPYRIGHT 2013 ELECTRONET SERVICES LIMITED  
 ALL RIGHTS RESERVED. UNAUTHORISED USE PROHIBITED

Datum 120	
SECTION 6 ALIGNMENT	129.1347 128.133 127.132 126.131 125.130 124.129 123.128 122.127 121.126 120.125 119.124 118.123 117.122 116.121 115.120 114.119 113.118 112.117 111.116 110.115 109.114 108.113 107.112 106.111 105.110 104.109 103.108 102.107 101.106 100.105 99.104 98.103 97.102 96.101 95.100 94.099 93.098 92.097 91.096 90.095 89.094 88.093 87.092 86.091 85.090 84.089 83.088 82.087 81.086 80.085 79.084 78.083 77.082 76.081 75.080 74.079 73.078 72.077 71.076 70.075 69.074 68.073 67.072 66.071 65.070 64.069 63.068 62.067 61.066 60.065 59.064 58.063 57.062 56.061 55.060 54.059 53.058 52.057 51.056 50.055 49.054 48.053 47.052 46.051 45.050 44.049 43.048 42.047 41.046 40.045 39.044 38.043 37.042 36.041 35.040 34.039 33.038 32.037 31.036 30.035 29.034 28.033 27.032 26.031 25.030 24.029 23.028 22.027 21.026 20.025 19.024 18.023 17.022 16.021 15.020 14.019 13.018 12.017 11.016 10.015 9.014 8.013 7.012 6.011 5.010 4.009 3.008 2.007 1.006 0.005 0.004 0.003 0.002 0.001 0.000
tin aerial	128.133 127.132 126.131 125.130 124.129 123.128 122.127 121.126 120.125 119.124 118.123 117.122 116.121 115.120 114.119 113.118 112.117 111.116 110.115 109.114 108.113 107.112 106.111 105.110 104.109 103.108 102.107 101.106 100.105 99.104 98.103 97.102 96.101 95.100 94.099 93.098 92.097 91.096 90.095 89.094 88.093 87.092 86.091 85.090 84.089 83.088 82.087 81.086 80.085 79.084 78.083 77.082 76.081 75.080 74.079 73.078 72.077 71.076 70.075 69.074 68.073 67.072 66.071 65.070 64.069 63.068 62.067 61.066 60.065 59.064 58.063 57.062 56.061 55.060 54.059 53.058 52.057 51.056 50.055 49.054 48.053 47.052 46.051 45.050 44.049 43.048 42.047 41.046 40.045 39.044 38.043 37.042 36.041 35.040 34.039 33.038 32.037 31.036 30.035 29.034 28.033 27.032 26.031 25.030 24.029 23.028 22.027 21.026 20.025 19.024 18.023 17.022 16.021 15.020 14.019 13.018 12.017 11.016 10.015 9.014 8.013 7.012 6.011 5.010 4.009 3.008 2.007 1.006 0.005 0.004 0.003 0.002 0.001 0.000
Depth	-0.009 -0.008 -0.007 -0.006 -0.005 -0.004 -0.003 -0.002 -0.001 0.000 0.001 0.002 0.003 0.004 0.005 0.006 0.007 0.008 0.009 0.010 0.011 0.012 0.013 0.014 0.015 0.016 0.017 0.018 0.019 0.020 0.021 0.022 0.023 0.024 0.025 0.026 0.027 0.028 0.029 0.030 0.031 0.032 0.033 0.034 0.035 0.036 0.037 0.038 0.039 0.040 0.041 0.042 0.043 0.044 0.045 0.046 0.047 0.048 0.049 0.050 0.051 0.052 0.053 0.054 0.055 0.056 0.057 0.058 0.059 0.060 0.061 0.062 0.063 0.064 0.065 0.066 0.067 0.068 0.069 0.070 0.071 0.072 0.073 0.074 0.075 0.076 0.077 0.078 0.079 0.080 0.081 0.082 0.083 0.084 0.085 0.086 0.087 0.088 0.089 0.090 0.091 0.092 0.093 0.094 0.095 0.096 0.097 0.098 0.099 0.100
Chainages	0.000 100.000 200.000 300.000 400.000 500.000 600.000 700.000 800.000 900.000 1000.000 1100.000 1200.000 1300.000 1400.000 1500.000 1600.000 1700.000 1800.000 1900.000 2000.000 2100.000 2200.000 2300.000 2400.000 2500.000 2600.000 2700.000 2800.000 2900.000 3000.000 3100.000 3200.000 3300.000 3400.000 3500.000 3600.000 3700.000 3800.000 3900.000 4000.000 4100.000 4200.000 4300.000 4400.000 4500.000 4600.000 4700.000 4800.000 4900.000 5000.000 5100.000 5200.000 5300.000 5400.000 5500.000 5600.000 5700.000 5800.000 5900.000 6000.000 6100.000 6200.000 6300.000 6400.000 6500.000 6600.000 6700.000 6800.000 6900.000 7000.000 7100.000 7200.000 7300.000 7400.000 7500.000 7600.000 7700.000 7800.000 7900.000 8000.000 8100.000 8200.000 8300.000 8400.000 8500.000 8600.000 8700.000 8800.000 8900.000 9000.000 9100.000 9200.000 9300.000 9400.000 9500.000 9600.000 9700.000 9800.000 9900.000 10000.000

SECTION 6  
Scale: Horz 1/10,000  
Vert 1/2,000

Datum 120	
SECTION 9 ALIGNMENT	127.138 126.137 125.136 124.135 123.134 122.133 121.132 120.131 119.130 118.129 117.128 116.127 115.126 114.125 113.124 112.123 111.122 110.121 109.120 108.119 107.118 106.117 105.116 104.115 103.114 102.113 101.112 100.111 99.110 98.109 97.108 96.107 95.106 94.105 93.104 92.103 91.102 90.101 89.100 88.099 87.098 86.097 85.096 84.095 83.094 82.093 81.092 80.091 79.090 78.089 77.088 76.087 75.086 74.085 73.084 72.083 71.082 70.081 69.080 68.079 67.078 66.077 65.076 64.075 63.074 62.073 61.072 60.071 59.070 58.069 57.068 56.067 55.066 54.065 53.064 52.063 51.062 50.061 49.060 48.059 47.058 46.057 45.056 44.055 43.054 42.053 41.052 40.051 39.050 38.049 37.048 36.047 35.046 34.045 33.044 32.043 31.042 30.041 29.040 28.039 27.038 26.037 25.036 24.035 23.034 22.033 21.032 20.031 19.030 18.029 17.028 16.027 15.026 14.025 13.024 12.023 11.022 10.021 9.020 8.019 7.018 6.017 5.016 4.015 3.014 2.013 1.012 0.011 0.010 0.009 0.008 0.007 0.006 0.005 0.004 0.003 0.002 0.001 0.000
tin aerial	127.138 126.137 125.136 124.135 123.134 122.133 121.132 120.131 119.130 118.129 117.128 116.127 115.126 114.125 113.124 112.123 111.122 110.121 109.120 108.119 107.118 106.117 105.116 104.115 103.114 102.113 101.112 100.111 99.110 98.109 97.108 96.107 95.106 94.105 93.104 92.103 91.102 90.101 89.100 88.099 87.098 86.097 85.096 84.095 83.094 82.093 81.092 80.091 79.090 78.089 77.088 76.087 75.086 74.085 73.084 72.083 71.082 70.081 69.080 68.079 67.078 66.077 65.076 64.075 63.074 62.073 61.072 60.071 59.070 58.069 57.068 56.067 55.066 54.065 53.064 52.063 51.062 50.061 49.060 48.059 47.058 46.057 45.056 44.055 43.054 42.053 41.052 40.051 39.050 38.049 37.048 36.047 35.046 34.045 33.044 32.043 31.042 30.041 29.040 28.039 27.038 26.037 25.036 24.035 23.034 22.033 21.032 20.031 19.030 18.029 17.028 16.027 15.026 14.025 13.024 12.023 11.022 10.021 9.020 8.019 7.018 6.017 5.016 4.015 3.014 2.013 1.012 0.011 0.010 0.009 0.008 0.007 0.006 0.005 0.004 0.003 0.002 0.001 0.000
Depth	-0.008 -0.007 -0.006 -0.005 -0.004 -0.003 -0.002 -0.001 0.000 0.001 0.002 0.003 0.004 0.005 0.006 0.007 0.008 0.009 0.010 0.011 0.012 0.013 0.014 0.015 0.016 0.017 0.018 0.019 0.020 0.021 0.022 0.023 0.024 0.025 0.026 0.027 0.028 0.029 0.030 0.031 0.032 0.033 0.034 0.035 0.036 0.037 0.038 0.039 0.040 0.041 0.042 0.043 0.044 0.045 0.046 0.047 0.048 0.049 0.050 0.051 0.052 0.053 0.054 0.055 0.056 0.057 0.058 0.059 0.060 0.061 0.062 0.063 0.064 0.065 0.066 0.067 0.068 0.069 0.070 0.071 0.072 0.073 0.074 0.075 0.076 0.077 0.078 0.079 0.080 0.081 0.082 0.083 0.084 0.085 0.086 0.087 0.088 0.089 0.090 0.091 0.092 0.093 0.094 0.095 0.096 0.097 0.098 0.099 0.100
Chainages	0.000 100.000 200.000 300.000 400.000 500.000 600.000 700.000 800.000 900.000 1000.000 1100.000 1200.000 1300.000 1400.000 1500.000 1600.000 1700.000 1800.000 1900.000 2000.000 2100.000 2200.000 2300.000 2400.000 2500.000 2600.000 2700.000 2800.000 2900.000 3000.000 3100.000 3200.000 3300.000 3400.000 3500.000 3600.000 3700.000 3800.000 3900.000 4000.000 4100.000 4200.000 4300.000 4400.000 4500.000 4600.000 4700.000 4800.000 4900.000 5000.000 5100.000 5200.000 5300.000 5400.000 5500.000 5600.000 5700.000 5800.000 5900.000 6000.000 6100.000 6200.000 6300.000 6400.000 6500.000 6600.000 6700.000 6800.000 6900.000 7000.000 7100.000 7200.000 7300.000 7400.000 7500.000 7600.000 7700.000 7800.000 7900.000 8000.000 8100.000 8200.000 8300.000 8400.000 8500.000 8600.000 8700.000 8800.000 8900.000 9000.000 9100.000 9200.000 9300.000 9400.000 9500.000 9600.000 9700.000 9800.000 9900.000 10000.000

SECTION 9  
Scale: Horz 1/10,000  
Vert 1/2,000



**Legend**

- Section 3
- Section 4
- Section 5
- Section 6
- Section 9
- Corridor
- Fault Avoidance Zone

NB: Heights are Derived from 20 m Contours in the Topo50 Map Series

PROPOSED ROAD ROUTE SUBJECT TO SURVEY AND DESIGN

ISS	AMENDMENT	BY	CHKD	APP	Date	Design
A	Title changed	J.M			6/14	
						Drawn J.M 4/14
						Checked
						Approved



**WAITAHA HYDRO SCHEME**  
**MAP 7 INDICATIVE ACCESS ROAD ALIGNMENT**

Scale	1/10,000
Sheet	1 of 1 Sheets
<b>9070</b>	<b>A3</b>
Folder	A
	Issue