



RECORD OF TITLE
UNDER LAND TRANSFER ACT 2017
FREEHOLD
Search Copy




R.W. Muir
Registrar-General
of Land

Identifier **629977**
Land Registration District **North Auckland**
Date Issued 04 November 2013

Prior References
NA67C/791

Estate	Fee Simple
Area	7925 square metres more or less
Legal Description	Lot 2 Deposited Plan 468814
Purpose	for Justice and Community Wellbeing Purposes

Registered Owners
His Majesty the King

Interests

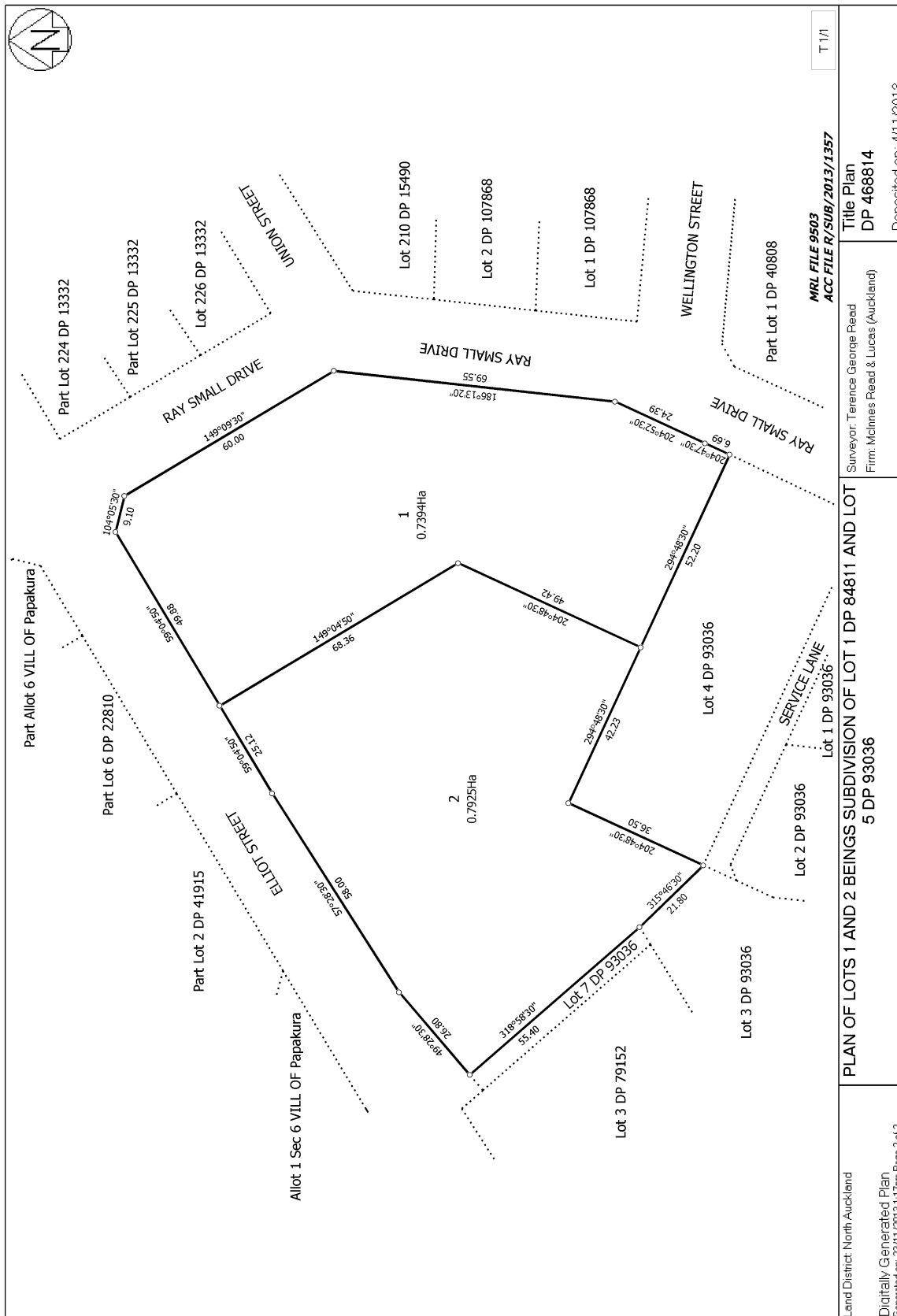
C926281.1 Certificate that a building consent has been issued in respect of a building on the land that is described in Section 36(2) Building Act 1991 - 28.11.1995 at 11.53 am

D235357.1 Certificate that a building consent has been issued in respect of a building on the land that is described in Section 36(2) Building Act 1991 - 19.1.1998 at 2.05 pm

Subject to Part IVA Conservation Act 1987

Subject to Section 11 Crown Minerals Act 1991

12942963.1 Certificate under section 148 of the Nga Mana Whenua o Tamaki Makaurau Collective Redress Act 2014 that the within land is RFR land as defined in section 118 and is subject to Subpart 1 of Part 4 of the Act (which restricts disposal, including leasing of the land) - 21.2.2024 at 7:00 am



**CERTIFICATE UNDER SECTION 148
NGĀ MANA WHENUA O TĀMAKI MAKĀURAU COLLECTIVE REDRESS ACT 2014
TO RECORD A RFR LAND MEMORIAL**

RFR 12942963.1 Rig

Cpy - 01/03, Pgs - 016, 20/02/24, 09



DocID: 624688783

To: Registrar-General of Land

Pursuant to the above section of the above Act, I **SZI MING LEE** HEREBY CERTIFY that the land identified in the Schedule is held in a record of title and that this land is subject to a right of first refusal in the above Act.

Please record on each record of title in the Schedule the memorial required pursuant to Section 194 of the above Act.


Name: **SZI MING LEE**

SCHEDULE

Record of Title	Legal Description
45986	Section 7 Survey Office Plan 70783
51128	Lot 18 Deposited Plan 208959
52048	Allotment 29 Section 11 Suburbs of Auckland
52053	Allotment 29 Section 11 Suburbs of Auckland
55911	Section 1 Survey Office Plan 310546
63634	Allotment 53, 83 Parish of Wairoa
66297	Section 1 Survey Office Plan 309230, Section 1 Survey Office Plan 309320
70724	Section 1 Survey Office Plan 69889
78026	Part Lot 4 Deposited Plan 19233
92724	Allotment 214-217 Parish of Waikomiti
93502	Section 1 Survey Office Plan 314996
99921	Part Section 39-40 Waari Hamlet
115299	Lot 1 Deposited Plan 35525
117158	Lot 493 Deposited Plan 19327
118734	Section 1 Survey Office Plan 322992
126032	Lot 17 Deposited Plan 49381
131842	Section 1 Survey Office Plan 70712
132413	Section 1 Survey Office Plan 70740
137302	Flat 1 Deposited Plan 333509, Section 22 Block VI Otahuhu Survey District
140755	Section 1 Survey Office Plan 70381

142364	Lot 6 Deposited Plan 334746, Lot 7 Deposited Plan 334123, Lot 8 Deposited Plan 334123
144375	Lot 566 Deposited Plan 19327
144376	Lot 565 Deposited Plan 19327
154242	Section 1 Survey Office Plan 330218
156844	Lot 12 Deposited Plan 317210
156845	Lot 16 Deposited Plan 317210
175321	Area A Survey Office Plan 64997
177921	Lot 489 Deposited Plan 19327
179773	Section 2 Survey Office Plan 318126
179774	Section 18 Survey Office Plan 318138
179775	Section 29 Survey Office Plan 326156
179776	Section 30 Survey Office Plan 326156
179777	Section 28 Survey Office Plan 326151
179778	Section 6 Survey Office Plan 318128
179779	Section 7 Survey Office Plan 318129
179780	Section 8 Survey Office Plan 318130
179781	Section 31 Survey Office Plan 325057
179782	Section 10 Survey Office Plan 318131
179783	Section 11 Survey Office Plan 318133
179784	Section 13 Survey Office Plan 318134
179785	Section 14 Survey Office Plan 318135
179786	Section 32 Survey Office Plan 325067
179787	Section 20 Survey Office Plan 326153
179788	Section 22 Survey Office Plan 326157
179789	Section 17 Survey Office Plan 318136
179790	Section 33 Survey Office Plan 328709
179791	Section 24 Survey Office Plan 328709
179792	Section 23 Survey Office Plan 328709
179793	Section 27 Survey Office Plan 326699
179794	Section 26 Survey Office Plan 326699
179795	Section 25 Survey Office Plan 326699
179796	Section 21 Survey Office Plan 325065
184325	Area A Survey Office Plan 69072
184436	Area C Survey Office Plan 69161
196938	Lot 505 Deposited Plan 335872
202577	Flat 2 Deposited Plan 128887 and Carport 2 Deposited Plan 128887, Lot 538 Deposited Plan 19327
202600	Section 1 Survey Office Plan 345375
209342	Part Allotment 19 Section 9 City of Auckland
222393	Lot 2 Deposited Plan 354465
240714	Part Allotment 7 Small Farms Near Otahuhu
241690	Section 1 Survey Office Plan 353636
271027	Lot 45-47 Deposited Plan 54477
277716	Section 1 Survey Office Plan 50364 and Part Lot 12, 21-23, 25-26 Deposited Plan 9261 and Part Allotment 107 Parish of Takapuna

285723	Lot 1 Deposited Plan 202528 and Lot 35 Deeds Plan 31
323786	Part Lot 1 Deposited Plan 54045
330050	Part Allotment 3-4 Section 2 Parish of Takapuna
331005	Lot 102 Deposited Plan 382872, Lot 7 Deposited Plan 382872
331006	Lot 102 Deposited Plan 382872, Lot 8 Deposited Plan 382872
354420	Lot 1-2 Deposited Plan 15722
365949	Section 5 Survey Office Plan 378109
365950	Section 6-7 Survey Office Plan 378109
385101	Section 1 Survey Office Plan 379381
386475	Section 3 Survey Office Plan 70377
392786	Lot 6 Deposited Plan 398448, Lot 8 Deposited Plan 376146
396088	Part Lot 15 Deposited Plan 289
425969	Lot 1 Deposited Plan 407364
429742	Section 1-2 Survey Office Plan 355498
429743	Section 3 Survey Office Plan 355498
437782	Section 1-2 Survey Office Plan 400772
438814	Lot 1 Deposited Plan 410485
441144	Section 3-4 Survey Office Plan 406689
453112	Section 1-3 Survey Office Plan 401920
458339	Lot 1 Deposited Plan 401724, Section 1 Survey Office Plan 417542, Section 2 Survey Office Plan 417542
460122	Lot 108 Deposited Plan 37887
461802	Section 1 Survey Office Plan 383880
468685	Section 6-13 Survey Office Plan 409826
469081	Section 2 Survey Office Plan 398412
470535	Section 1 Survey Office Plan 70066
473875	Section 6 Survey Office Plan 398057
486301	Section 1-2, 16 Survey Office Plan 409267
486302	Section 14-15 Survey Office Plan 409267
486318	Section 7 Survey Office Plan 409267
498902	Section 11, 13 Survey Office Plan 413550
498905	Section 14 Survey Office Plan 413550
510159	Section 9-10, 12 Survey Office Plan 415380
510160	Section 4-5 Survey Office Plan 415380
510502	Section 1-6, 17, 19-20 Survey Office Plan 408829
510503	Section 7-13, 21 Survey Office Plan 408829
510504	Section 16 Survey Office Plan 408829
510505	Section 18 Survey Office Plan 408829
510506	Section 23-25, 28-29 Survey Office Plan 408829
510507	Section 27 Survey Office Plan 408829
511456	Section 8-9, 11-14, 18, 20-21, 24 Survey Office Plan 410854
511478	Section 10 Survey Office Plan 410854
513418	Allotment 63-66 Section 13 Suburbs of Auckland and Lot 15 Deposited Plan 38834 and Part Lot 14 Deposited Plan 38834 and Part Lot 8-11 Deposited Plan 38833, Part Allotment 9 Section 13 Suburbs of Auckland and Allotment 63-66

	Section 13 Suburbs of Auckland and Lot 15 Deposited Plan 38834 and Part Lot 14 Deposited Plan 38834 and Part Lot 8-11 Deposited Plan 38833
513428	Lot 71 Deposited Plan 193 and Lot 33 Deposited Plan 21413 and Lot 5 Deposited Plan 51400 and Lot 42 Deposited Plan 21413 and Lot 2 Deposited Plan 32190
513674	Lot 1, 5 Deposited Plan 39816
514778	Section 8-11, 13 Survey Office Plan 426607
514779	Section 12, 15 Survey Office Plan 426607
518762	Lot 114, 1131 Deposited Plan 19657
520307	Section 1, 4, 6, 8, 12 Survey Office Plan 426630
520316	Section 3, 7, 13, 15 Survey Office Plan 426630
521304	Section 17, 19 Survey Office Plan 374158 and Section 1 Survey Office Plan 405553
521695	Section 19 Survey Office Plan 410854
524002	Section 1 Survey Office Plan 430197
525159	Section 2, 6, 10, 12 Survey Office Plan 429754
528597	Section 42, 44, 46-47 Survey Office Plan 421535
529268	Section 4, 6-8 Survey Office Plan 426946
529269	Section 3, 5 Survey Office Plan 426946
530143	Section 2, 4 Survey Office Plan 421305
530144	Section 5 Survey Office Plan 421305
530147	Section 88 Survey Office Plan 419816
530645	Section 1-4 Survey Office Plan 425942
531722	Section 3, 7, 9, 11 Survey Office Plan 421535
534570	Section 12 Survey Office Plan 419816
536804	Section 28, 33, 42, 53, 56, 58, 60, 63-64, 67, 82, 107 Survey Office Plan 419816
538011	Section 5 Survey Office Plan 421535
540173	Section 13 Survey Office Plan 421535
543379	Section 29, 34 Survey Office Plan 421305
543930	Section 6, 9, 13-14, 69 Survey Office Plan 421305
543931	Section 54-55, 58 Survey Office Plan 421305
543932	Section 61 Survey Office Plan 421305
543933	Section 57, 59 Survey Office Plan 421305
544023	Section 4 Survey Office Plan 430425
546752	Section 1, 8, 13 Survey Office Plan 428961
546791	Section 12 Survey Office Plan 428961
546800	Section 15 Survey Office Plan 428961
546801	Section 9 Survey Office Plan 428961
549225	Lot 1 Deposited Plan 441187, Lot 8 Deposited Plan 376146
552313	Section 4 Survey Office Plan 429754
554928	Section 13-19, 23 Survey Office Plan 434649
554929	Section 20-22 Survey Office Plan 434649
554930	Section 4-7 Survey Office Plan 434649
555062	Section 2 Survey Office Plan 440531
555064	Section 5 Survey Office Plan 440531
557170	Section 1 Survey Office Plan 434006
558037	Section 1055 Survey Office Plan 434446
558056	Section 1056 Survey Office Plan 434446

558057	Section 1054 Survey Office Plan 434446
558058	Section 1053 Survey Office Plan 434446
558319	Section 1058 Survey Office Plan 434446
558356	Section 1048 Survey Office Plan 434446
558367	Section 1104 Survey Office Plan 434446
558436	Section 67 Survey Office Plan 430425
558705	Section 1088 Survey Office Plan 434446
558706	Section 1073 Survey Office Plan 434446
559082	Section 1085 Survey Office Plan 434446
559083	Section 1110 Survey Office Plan 434446
559085	Section 1090 Survey Office Plan 434446
559088	Section 1109 Survey Office Plan 434446
559664	Section 11-14, 16, 18-23, 29-31 Survey Office Plan 430465
560735	Section 51 Survey Office Plan 419816 and Section 65-66 Survey Office Plan 421305
560779	Section 77 Survey Office Plan 424134
560788	Section 114, 124-127, 35, 37, 40 Survey Office Plan 419816
560789	Section 15-16, 21, 27-28, 30, 34, 55-56, 59, 61, 64, 66 Survey Office Plan 421535
560905	Part Allotment 91 Parish of Titirangi
561111	Section 9-14, 18-22 Survey Office Plan 433523
561371	Section 15, 17 Survey Office Plan 433523
561372	Section 16 Survey Office Plan 433523
562218	Section 1091 Survey Office Plan 434446
562219	Section 1075 Survey Office Plan 434446
562220	Section 1033 Survey Office Plan 434446
562221	Section 1010 Survey Office Plan 434446
563543	Section 1037 Survey Office Plan 434446
563544	Section 1016 Survey Office Plan 434446
563740	Section 2 Survey Office Plan 430425
563755	Section 1068 Survey Office Plan 434446
563756	Section 1072 Survey Office Plan 434446
563757	Section 1057 Survey Office Plan 434446
564068	Section 1095 Survey Office Plan 434446
564611	Section 1096 Survey Office Plan 434446
565007	Section 1046 Survey Office Plan 434446
565008	Section 1045 Survey Office Plan 434446
565009	Section 1011 Survey Office Plan 434446
565010	Section 1035 Survey Office Plan 434446
565011	Section 1032 Survey Office Plan 434446
565060	Section 1031 Survey Office Plan 434446
565061	Section 1029 Survey Office Plan 434446
565062	Section 1017 Survey Office Plan 434446
565063	Section 1115 Survey Office Plan 434446
566040	Section 69 Survey Office Plan 421535
566079	Section 2 Survey Office Plan 434026
566080	Section 4 Survey Office Plan 434026

566124	Section 17-20 Survey Office Plan 434648
566125	Section 21-24 Survey Office Plan 434648
566126	Section 9-12 Survey Office Plan 434648
566127	Section 5-8 Survey Office Plan 434648
567482	Section 130, 1130 Survey Office Plan 434446
567830	Section 1071 Survey Office Plan 434446
567831	Section 1084 Survey Office Plan 434446
568056	Section 19 Survey Office Plan 441004
569182	Section 1040 Survey Office Plan 434446
570339	Section 1106 Survey Office Plan 434446
570871	Lot 6 Section 8 Deeds Plan 1369
571858	Section 1116 Survey Office Plan 434446
571859	Section 1108 Survey Office Plan 434446
572216	Section 1111 Survey Office Plan 434446
572420	Section 112, 1112 Survey Office Plan 434446
572907	Section 1044 Survey Office Plan 434446
572944	Section 1018 Survey Office Plan 434446
572945	Section 1020 Survey Office Plan 434446
572946	Section 1025 Survey Office Plan 434446
572947	Section 1026 Survey Office Plan 434446
573129	Section 1153 Survey Office Plan 434446
573130	Section 1052 Survey Office Plan 434446
573180	Section 1107 Survey Office Plan 434446
573495	Section 1141 Survey Office Plan 434446
573496	Section 1132 Survey Office Plan 434446
573497	Section 1134 Survey Office Plan 434446
573498	Section 1145 Survey Office Plan 434446
573499	Section 1144 Survey Office Plan 434446
573500	Section 1138 Survey Office Plan 434446
573504	Section 1146 Survey Office Plan 434446
573505	Section 1143 Survey Office Plan 434446
573507	Section 1133 Survey Office Plan 434446
574945	Section 11, 13, 16, 19-21, 23, 27, 31, 33 Survey Office Plan 445478
575559	Section 135, 139, 1135, 1139 Survey Office Plan 434446
577183	Section 1043 Survey Office Plan 434446
577225	Section 41, 1041 Survey Office Plan 434446
577378	Section 5-6 Survey Office Plan 442650
577805	Section 15, 1015 Survey Office Plan 434446
578614	Section 1030 Survey Office Plan 434446
578615	Section 1036 Survey Office Plan 434446
579604	Section 148, 1148 Survey Office Plan 434446
579922	Section 1113 Survey Office Plan 434446
579925	Section 1105 Survey Office Plan 434446
580411	Section 1074 Survey Office Plan 434446
580412	Section 1086 Survey Office Plan 434446

580873	Section 42, 1042 Survey Office Plan 434446
581310	Section 45 Survey Office Plan 440766
581312	Section 52 Survey Office Plan 440766
581313	Section 53 Survey Office Plan 440766
581357	Section 1094 Survey Office Plan 434446
581449	Section 98, 102 Survey Office Plan 431758
582668	Section 7, 10 Survey Office Plan 435724
582688	Section 6 Survey Office Plan 435724
582691	Section 9 Survey Office Plan 435724
582883	Section 2 Survey Office Plan 440414
583448	Part Lot 18 Deposited Plan 24310
584236	Section 1079 Survey Office Plan 434446
584626	Section 1087 Survey Office Plan 434446
584627	Section 1082 Survey Office Plan 434446
584628	Section 1081 Survey Office Plan 434446
585411	Section 1067 Survey Office Plan 434446
585412	Section 1076 Survey Office Plan 434446
585413	Section 1077 Survey Office Plan 434446
585414	Section 1078 Survey Office Plan 434446
585551	Section 2 Survey Office Plan 452068
586258	Section 9-21 Survey Office Plan 371572 and Section 5 Survey Office Plan 453109
586259	Section 20, 23-25 Survey Office Plan 374158 and Section 4 Survey Office Plan 453109
586260	Section 2 Survey Office Plan 453109
586963	Section 34, 38 Survey Office Plan 440766
586964	Section 41 Survey Office Plan 440766
588087	Section 1-2 Survey Office Plan 447822
588695	Section 4 Survey Office Plan 440414
588749	Flat 2 Deposited Plan 194686 and Carport 2 Deposited Plan 194686, Section 2 Survey Office Plan 440414
589665	Section 2 Survey Office Plan 453845
589910	Section 64 Survey Office Plan 421305
589911	Section 70 Survey Office Plan 421305
590576	Section 1060 Survey Office Plan 434446
591518	Section 1154 Survey Office Plan 434446
592969	Section 25 Survey Office Plan 434649
596994	Section 1089 Survey Office Plan 434446
600028	Section 1 Survey Office Plan 453469
603061	Section 2-3 Survey Office Plan 456891
603866	Section 1 Survey Office Plan 50714
607230	Section 5 Survey Office Plan 455004
607231	Section 2-4 Survey Office Plan 455004
607232	Section 6-7 Survey Office Plan 455004
610218	Section 71 Survey Office Plan 438913
610470	Section 49, 1049 Survey Office Plan 434446
612531	Section 30-31, 33, 35, 37 Survey Office Plan 452750

612532	Section 26-29, 32, 34, 36, 38 Survey Office Plan 452750
612685	Section 12, 23-25 Survey Office Plan 452750
612687	Section 1 Survey Office Plan 452750
612689	Section 2 Survey Office Plan 452750
612690	Section 3 Survey Office Plan 452750
616465	Section 9, 11, 19, 28 Survey Office Plan 448729
616466	Section 25-26, 29 Survey Office Plan 448729
618920	Section 1-2 Survey Office Plan 460516
619728	Section 93, 1093 Survey Office Plan 434446
619801	Section 1064, 1069, 1100, 1103, 1118, 1120-1121, 1124-1126, 1131, 1142, 1147, 1149-1152, 1155, 1157-1159 Survey Office Plan 434446
624083	Section 11 Survey Office Plan 437201
624084	Section 12 Survey Office Plan 437201
624085	Section 22, 24, 26, 29-31, 34, 36 Survey Office Plan 437201
624086	Section 23, 25, 32-33, 35 Survey Office Plan 437201
626703	Section 1 Survey Office Plan 463386
626933	Section 1, 4, 6, 9-10 Survey Office Plan 430646
626934	Section 8 Survey Office Plan 430646
626935	Section 2-3 Survey Office Plan 430646
627903	Section 22, 24-25, 28, 30 Survey Office Plan 457092
627904	Section 21, 23, 26-27, 29, 31 Survey Office Plan 457092
627905	Section 11 Survey Office Plan 457092 and Section 1 Survey Office Plan 62127 and Section 1 Survey Office Plan 62126
627906	Section 14, 16-17, 20 Survey Office Plan 457092
627907	Section 3 Survey Office Plan 457092
627908	Section 5 Survey Office Plan 457092
627909	Section 8 Survey Office Plan 457092
627910	Section 32 Survey Office Plan 457092
627911	Section 33 Survey Office Plan 457092
628333	Part Lot 3 Deposited Plan 50435
629977	Lot 2 Deposited Plan 468814
630129	Section 1 Survey Office Plan 461402
630345	Part Allotment 91 Survey Office Plan 39373
630351	Part Allotment 103 Parish of Takapuna
630363	Part Allotment 103 Parish of Takapuna
630364	Section 3 Survey Office Plan 406748
630452	Section 1 Survey Office Plan 406748
632272	Lot 343 Deposited Plan 22849
633842	Allotment 196 Section 6 Suburbs of Auckland
634866	Lot 43 Deposited Plan 50249
634903	Lot 13 Deposited Plan 42267 and Lot 39 Deposited Plan 18610
635030	Lot 33 Deposited Plan 55942
635189	Part Lot 1 Deposited Plan 34567
635271	Lot 3 Deposited Plan 85872
637304	Lot 8, 17 Deposited Plan 39775
637401	Part Deposited Plan 8206

638667	Section 1-2, 4-6 Survey Office Plan 460605
638672	Section 3, 7 Survey Office Plan 460605
639196	Section 2 Survey Office Plan 460766
639354	Lot 74 Deposited Plan 55941
639355	Lot 77 Deposited Plan 55941
639531	Lot 28 Deposited Plan 33024
639587	Lot 1-12 Deposited Plan 20399
641217	Section 156, 1156 Survey Office Plan 455668
641792	Lot 18 Deposited Plan 28714
642873	Section 5-9 Survey Office Plan 467688
648302	Section 4-5 Survey Office Plan 470928
652550	Section 1, 3 Survey Office Plan 457800
657017	Lot 1 Deposited Plan 474785
660158	Section 2 Survey Office Plan 474348
660764	Lot 2 Deposited Plan 477135
664905	Section 101, 103 Survey Office Plan 431758
664906	Section 1 Survey Office Plan 472888
667585	Lot 1 Deposited Plan 478463
667586	Lot 2 Deposited Plan 478463
667587	Lot 3 Deposited Plan 478463
668560	Section 1 Survey Office Plan 476256
671359	Section 4-8 Survey Office Plan 469203
671372	Section 1 Survey Office Plan 469203
674229	Part Lot 3 Deposited Plan 29673
675661	Part Lot 8-9 Deposited Plan 16710 and Lot 30 Deposited Plan 48485 and Part Lot 15 Deposited Plan 20783 and Lot 5 Deposited Plan 49244
676279	Lot 2 Deposited Plan 472918
677744	Lot 377 Deposited Plan 45110
679700	Part Clendon's Grant and Part Lot 2 Deposited Plan 20537
681583	Allotment 5-6, 23-24, 80-81 Section 1 Whau North Township and Allotment 463, 495 Parish of Waikomiti and Part Allotment 363 Parish of Waikomiti and Part Allotment 363 Parish of Waikomiti
681584	Allotment 5-6 Section 1 Whau North Township
684123	Section 57 Survey Office Plan 443549
684124	Section 63 Survey Office Plan 443549
684125	Section 101-102 Survey Office Plan 443549
684126	Section 104-106 Survey Office Plan 443549
684741	Section 1 Survey Office Plan 69109
684744	Section 5 Survey Office Plan 69109
684745	Section 2 Survey Office Plan 69109
685655	Section 1 Survey Office Plan 480238
691640	Lot 2-4 Deposited Plan 29962 and Section 1-6 Survey Office Plan 34089 and Section 1-6 Survey Office Plan 50073
691641	Section 1 Survey Office Plan 57162
691642	Section 1-2 Survey Office Plan 32767
696140	Section 1 Survey Office Plan 484474

696141	Section 2 Survey Office Plan 484474
701910	Lot 91 Deposited Plan 41342
710877	Section 11, 14, 20-21 Survey Office Plan 486563
710878	Section 2, 5, 8, 17, 23 Survey Office Plan 486563
710879	Section 3, 6, 9-10, 22, 24 Survey Office Plan 486563
710886	Section 1 Survey Office Plan 351675 and Section 28 Survey Office Plan 486563
716325	Part Lot 5 Deposited Plan 28318 and Part Lot 121 Deposited Plan 19643
717152	Section 36, 43, 46, 48-49, 51, 54-55, 58-59, 62-63 Survey Office Plan 472113
726115	Section 1-2 Survey Office Plan 492796
726650	Section 3 Survey Office Plan 492796 and Section 1, 15 Survey Office Plan 426630 and Section 9 Survey Office Plan 426607
732115	Section 2 Survey Office Plan 489775
732745	Section 1 Survey Office Plan 492797 and Section 57, 74 Survey Office Plan 424134 and Section 3 Survey Office Plan 460000 and Part Lot 10 Deposited Plan 86619
733099	Section 2 Survey Office Plan 492797
749220	Section 2 Survey Office Plan 497308
750921	Section 1 Survey Office Plan 62753
1149942	Section 1 Survey Office Plan 485026
757346	Section 14 Survey Office Plan 491366
758138	Section 2, 8 Survey Office Plan 357826 and Section 7, 13 Survey Office Plan 453967
758140	Section 3 Survey Office Plan 357826 and Section 14 Survey Office Plan 453967
771417	Part Lot 1-2 and Part Lot 1-2 Deposited Plan 3747
771418	Part Lot 2 Deposited Plan 9530
771419	Part Lot 1 Deposited Plan 36831
771420	Part Lot 3 Deposited Plan 3747
771421	Part Lot 6 Deposited Plan 17592 and Lot 7 Deposited Plan 17592 and Part Lot 8-10 Deposited Plan 17592
771422	Part Lot 4 Deposited Plan 3747 and Part Lot 5 Deposited Plan 21288
771433	Section 4, 21 Survey Office Plan 502499
771441	Section 23 Survey Office Plan 502499
783241	Allotment 353 Parish of Waipareira
783242	Closed Road Survey Office Plan 47131
785510	Section 39 Survey Office Plan 506942
787356	Section 1 Survey Office Plan 504922
788443	Lot 56 Deposited Plan 47394
788800	Section 2-6 Survey Office Plan 508873
788801	Section 7 Survey Office Plan 508873
792648	Section 1 Survey Office Plan 510513
793044	Section 2 Survey Office Plan 508486
793045	Section 4 Survey Office Plan 508486
793047	Section 5 Survey Office Plan 508486
796098	Section 6 Survey Office Plan 509867
807314	Section 9-10 Survey Office Plan 509896
812485	Section 2 Survey Office Plan 504170
812486	Section 6 Survey Office Plan 504170

944220	Section 1-2 Survey Office Plan 531991
944263	Section 1-4 Survey Office Plan 534409
946113	Section 9 Survey Office Plan 529034
946163	Section 4-5 Survey Office Plan 471033
946164	Section 10-11 Survey Office Plan 471033
955250	Section 1 Survey Office Plan 539240
960225	Section 1-4 Survey Office Plan 533650
962901	Part Allotment 31 Section 1 Parish of Takapuna
967502	Part Allotment 21 Section 8 Suburbs of Auckland and Part Allotment 21 Section 8 Suburbs of Auckland
972785	Section 3-7 Survey Office Plan 32767 and Lot 1-4 Deposited Plan 15356 and Allotment 235 Parish of Hunua and Allotment 153, 237 Parish of Opaheke and Section 1 Survey Office Plan 517756
973262	Section 15-16 Survey Office Plan 533789 and Marked J Survey Office Plan 57026
973263	Section 18 Survey Office Plan 533789
973264	Section 17 Survey Office Plan 533789
973267	Section 21 Survey Office Plan 533789
974920	Part Allotment 180 Parish of Waiuku West
996596	Marked A, B Survey Office Plan 53426
996600	Allotment 397 Pakuranga Parish
996679	Part Lot 2 Deposited Plan 24388 and Part Lot 2 Deposited Plan 24388
997109	Section 2-3, 8 Survey Office Plan 357826
1014828	Part Allotment 15 Parish of Mangatawhiri
1023764	Lot 12 Deposited Plan 37095
1039098	Section 1, 3 Survey Office Plan 544051
1044563	Section 1 Survey Office Plan 560787
1055061	Lot 305 Deposited Plan 67444
1055727	Part Lot 1-2 Deposited Plan 19203 and Part Lot 19, 22 Deposited Plan 18321
1058108	Lot 1 Deposited Plan 575888
1058109	Lot 2 Deposited Plan 575888
1058110	Lot 3 Deposited Plan 575888
1058300	Part Lot 1 Deposited Plan 17603
1081887	Lot 1 Deposited Plan 35177 and Part Allotment 17 Parish of Maraetai and Lot 30 Allotment 4 Section 8 Suburbs of Auckland, and Lot 32 Allotment 4 Section 8 Suburbs of Auckland
1105680	Lot 130 Deposited Plan 38569
1113852	Lot 131 Deposited Plan 21696
1150683	Crown Land Survey Office Plan 43789
1118219	Section 20 Survey Office Plan 533789
239722	Part Lot 4 Deposited Plan 9819
363728	Lot 76-79 Deposited Plan 10723
NA100B/559	Flat 1 Deposited Plan 165812, Lot 1 Deposited Plan 165191
NA100C/864	Section 1 Survey Office Plan 66967 and Lot 4 Deposited Plan 24508
NA101B/645	Lot 2 Deposited Plan 167048
NA1024/291	Lot 9 Deposited Plan 14711
NA102B/725	Lot 1 Deposited Plan 168323

814084	Section 39 Survey Office Plan 510769
814974	Section 76, 79, 88-89 Survey Office Plan 510769
815619	Section 51 Survey Office Plan 510769
820367	Section 63, 68 Survey Office Plan 498829
820953	Section 32 Survey Office Plan 510769
820954	Section 63-64 Survey Office Plan 510769
820955	Section 71 Survey Office Plan 510769
820958	Section 61 Survey Office Plan 510769
821616	Allotment 573 Parish of Waipareira
821791	Section 21, 83 Survey Office Plan 510769
824614	Section 83, 85 Survey Office Plan 498829
1136864	Section 7, 9-10, 14 Survey Office Plan 512442
830553	Section 3, 7 Survey Office Plan 504926
831613	Lot 1 Deposited Plan 417625
833494	Section 15, 20 Survey Office Plan 510769
835654	Section 35, 43-48, 72 Survey Office Plan 510769
837994	Section 9 Survey Office Plan 315376
838749	Part Lot 538 Deposited Plan 44551
844468	Section 24 Survey Office Plan 510769
853588	Section 1 Survey Office Plan 522639
858510	Section 1 Survey Office Plan 526995
875104	Section 7-10 Survey Office Plan 502584 and Section 1-2 Survey Office Plan 527492
880663	Section 18 Survey Office Plan 527867
880664	Section 31 Survey Office Plan 527867
880665	Section 9 Survey Office Plan 527867
881828	Section 25-26 Survey Office Plan 527867
885885	Section 1 Survey Office Plan 531566
891304	Lot 2 Deposited Plan 135655
905203	Section 1-2 Survey Office Plan 527402
908708	Lot 2 Deposited Plan 536655
910194	Lot 31-36 Deeds Plan S 60A
910333	Part Lot 9 Allotment 16 Section 9 Suburbs of Auckland and Part Lot 10-11 Allotment 16 Section 9 Suburbs of Auckland and Lot 12-17 Allotment 16 Section 9 Suburbs of Auckland and Part Lot 40-45 Allotment 16 Section 9 Suburbs of Auckland
923118	Part Allotment NE57 Parish of Wairau and Lot 1 Deposited Plan 30421 and Deposited Plan 9182 and Lot 4 Deposited Plan 13692 and Lot 20-23 Deposited Plan 19744 and Lot 1 Deposited Plan 15044 and Part Allotment 34 Section 6 Suburbs of Auckland and Allotment 89 Section 12 Suburbs of Auckland and Part Allotment 52 Parish of Titirangi and Lot 1 Deposited Plan 34410 and Deposited Plan 26518 and Lot 1 Deposited Plan 35958 and Part Lot 9 Deposited Plan 22798 and Part Allotment 76 Parish of Owahiwa and Lot 1 Deposited Plan 36569
943252	Part Old Land Claim 47 and Part Section 6 Block XXV Town of Opuia and Section 7 Block XXV Town of Opuia and Allotment 32 Suburban Section 1 Parish of Puni and Part Allotment 3-4, 2, 4 Parish of Maungatapere and Lot 52-59, 61-73, 75-78 Deeds Plan Blue W and Part Lot 60 Deeds Plan Blue W and Lot 74 Deposited Plan 7924 and Part Lot 1-2 Deposited Plan 6671 and Lot 1 Deposited Plan 33415

NA102C/789	Flat 2 Deposited Plan 168749, Lot 1 Deposited Plan 165191
NA103D/395	Flat 1 Deposited Plan 170213 and Carport 1 Deposited Plan 170213, Lot 8 Deposited Plan 77201
NA103D/396	Flat 2 Deposited Plan 170213, Lot 8 Deposited Plan 77201
NA1052/190	Lot 6 Deposited Plan 14711
NA1056/72	Part Allotment 37 Parish of Opaheke
NA1075/159	Lot 12 Deposited Plan 40320
NA1075/288	Lot 13 Deposited Plan 40320
NA1096/188	Part Allotment 8 Parish of Opaheke
NA10D/524	Part Lot 1 Deposited Plan 40331
NA110B/576	Lot 2 Deposited Plan 178925
NA1110/58	Part Lot 28 Deposited Plan 21894
NA1138/254	Lot 1 Deposited Plan 42329
NA113D/412	Flat 1 Deposited Plan 182693, Lot 1 Deposited Plan 102316
NA114B/808	Lot 7 Deposited Plan 183527
NA114B/810	Lot 9 Deposited Plan 183527
NA114B/811	Lot 10 Deposited Plan 183527
NA114B/812	Lot 11 Deposited Plan 183527
NA115B/941	Flat 2 Deposited Plan 184888, Lot 1 Deposited Plan 102316
NA115C/778	Lot 1 Deposited Plan 185298
NA1189/62	Lot 10 Deposited Plan 34592
NA119A/944	Lot 17 Deposited Plan 189766, Lot 1 Deposited Plan 189766
NA119A/947	Lot 16 Deposited Plan 189766, Lot 17 Deposited Plan 189766
NA11A/300	Lot 3 Deposited Plan 49774
NA120A/40	Lot 4 Deposited Plan 189786
NA120A/41	Lot 5 Deposited Plan 189786
NA120A/42	Lot 6 Deposited Plan 189786
NA123B/541	Lot 1 Deposited Plan 195221
NA123B/542	Lot 2 Deposited Plan 195221
NA127A/269	Lot 1 Deposited Plan 197998
NA127A/555	Lot 2 Deposited Plan 198107
NA12D/1411	Lot 2 Deposited Plan 58429
NA131C/544	Lot 25 Deposited Plan 186721, Lot 2 Deposited Plan 202864
NA133C/131	Lot 6 Deposited Plan 26362 and Lot 1 Deposited Plan 204229
NA133C/417	Lot 1-6 Deposited Plan 204869
NA136B/428	Lot 2 Deposited Plan 207850
NA136B/429	Lot 3 Deposited Plan 207850
NA13D/1489	Ngarango Otainui Island
NA1579/5	Part Allotment 37 Parish of Manurewa
NA1957/86	Part Allotment 258 Parish of Opaheke and Part Allotment 38 Parish of Opaheke
NA1977/1	Lot 2 Deposited Plan 24657
NA19A/1134	Lot 4 Deposited Plan 53345
NA1B/371	Lot 7 Deposited Plan 50310
NA2080/74	Lot 2 Deposited Plan 50719
NA2088/95	Allotment 164 Section 6 Suburbs of Auckland
NA20C/57	Part Allotment 7A Section 12 Suburbs of Auckland

NA2103/9	Lot 1-3 Deposited Plan 14711
NA2111/21	Lot 2 Deposited Plan 15127 and Part Lot 1 Deposited Plan 15127
NA21C/1210	Part Lot 1 Deposited Plan 45451
NA24D/1376	Lot 2 Deposited Plan 68032
NA24D/1377	Lot 1 Deposited Plan 68032
NA25/249	Part Lot 17-18 and Part Lot 48-49 Deposited Plan 83
NA25D/329	Lot 1 Deposited Plan 69950
NA25D/333	Lot 5 Deposited Plan 69950
NA27C/1102	Lot 3 Deposited Plan 71277
NA27C/1105	Lot 6 Deposited Plan 71277
NA27C/1107	Lot 14 Deposited Plan 71277
NA27C/1282	Flat 4 Deposited Plan 71324, Lot 1 Deposited Plan 70453
NA32/63	Part of Lot 41 of the subdivision of Allotment 8 of Section 5 of the Suburbs of Auckland
NA336/204	Lot 198 Deposited Plan 11377
NA33C/759	Lot 11 Deposited Plan 77201
NA33C/760	Lot 12 Deposited Plan 77201
NA33C/785	Lot 148 Deposited Plan 77203
NA33C/801	Lot 149 Deposited Plan 77204
NA33C/802	Lot 150 Deposited Plan 77204
NA33C/803	Lot 151 Deposited Plan 77204
NA38A/69	Part Lot 30 Deposited Plan 10637
NA39C/1072	Lot 1 Deposited Plan 83246
NA409/185	Lot 89 Deposited Plan 348
NA416/207	Lot 87 Deposited Plan 348
NA43B/1023	Lot 1 Deposited Plan 41170
NA44B/1074	Lot 1 Deposited Plan 86856
NA44C/881	Lot 112 Deposited Plan 38270
NA45D/1028	Lot 1 Deposited Plan 88576
NA45D/628	Lot 1 Deposited Plan 88427
NA45D/629	Lot 2 Deposited Plan 88427
NA46D/240	Lot 1 Deposited Plan 89570
NA48A/340	Lot 62 Deposited Plan 91548
NA48A/731	Lot 3 Deposited Plan 91690, Lot 4 Deposited Plan 91686
NA48A/732	Lot 3 Deposited Plan 91690, Lot 5 Deposited Plan 91686
NA4A/998	Lot 6 Deposited Plan 47595
NA50/6	Part Allotment 133 Parish of Takapuna
NA503/232	Lot 5 Allotment 49 Parish of Manurewa
NA509/51	Lots 16, 17, 18, 19 and 20 and part of Lots 14 and 15 of Block 23 of McLeans Township of Pokeno
NA52B/1464	Lot 6 Deposited Plan 77201
NA52C/512	Lot 1 Deposited Plan 96631
NA530/289	Defined On Deposited Plan 22648, Part Allotment 32A, Part Allotment 35A, Part Allotment 34A, Part Allotment 33A and Part Allotment 36A Section 3 Suburbs of Auckland and Defined On Deposited Plan 22648
NA535/9	Part Lot 5 Section 6 Village of Onehunga

NA538/6	Part Allotment 3 Section 11 Village of Onehunga
NA54A/1001	Section 28-29 Block XI Otahuhu Survey District
NA55/236	Part Bed Auckland Harbour
NA55B/1364	Lot 9 Deposited Plan 77201
NA56A/1101	Lot 146 Deposited Plan 77203
NA56C/1257	Lot 1 Deposited Plan 102795, Lot 5 Deposited Plan 102795
NA571/249	Part Northern Portion Allotment 186 Parish of Takapuna
NA57B/1477	Lot 2 Deposited Plan 102316
NA58B/436	Part Lot 1 Deposited Plan 34567
NA58C/848	Part Lot 2 Deposited Plan 39706
NA59A/1200	Allotment 400 Parish of Opaheke and Lot 4 Deposited Plan 106093
NA5D/730	Part Deposited Plan 25831
NA60/235	Lot 1 Allotment 2B Section 10 Suburbs of Auckland and Part Lot 2-3 Allotment 2B Section 10 Suburbs of Auckland, Lot 1 Deposited Plan 1141
NA60C/968	Lot 1 Deposited Plan 108502
NA617/238	Allotments 97, 97A and 98 and Part Allotments 99 and 100 Section 6 Suburbs of Auckland and Defined on Part Deposited Plan 3025 and Part Deposited Plan 3789, Part Deposited Plan 3025 and Part Deposited Plan 3789
NA61C/965	Lot 1 Deposited Plan 109621 and Lot 3 Deposited Plan 109621
NA62/42	Part Allotment 1, 2C, 2D Section 10 Suburbs of Auckland
NA64/136	Part Deposited Plan 119 and Part Deposited Plan 119 and Part Deposited Plan 119
NA65D/732	Lot 2 Deposited Plan 115881
NA65D/733	Lot 3 Deposited Plan 115881
NA66C/687	Lot 1 Deposited Plan 117185
NA67C/345	Allotment 422 Parish of Opaheke
NA68C/250	Flat 1 Deposited Plan 119250, Lot 33 Deposited Plan 62703
NA68C/251	Flat 2 Deposited Plan 119250, Lot 33 Deposited Plan 62703
NA70A/617	Lot 7 Deposited Plan 51794
NA70A/653	Lot 4 Deposited Plan 69950
NA71A/120	Lot 1 Deposited Plan 121887
NA71C/757	lot 1 Deposited Plan 123224
NA71D/638	Part Lot 68 Survey Office Plan 23745, Part Section 68 Survey Office Plan 20585
NA731/264	Part Lot 1 Deposited Plan 15363 and Lot 1 Deposited Plan 24776 and Part Lot 2 Deposited Plan 24776
NA736/197	Lot 1 Deposited Plan 29799
NA75/232	Part Allotment 65 Section 1 Suburbs of Auckland
NA75B/605	Part Allotment 207 Section 11 Village of Papakura
NA76/141	Part Lot 19 Deposited Plan 211
NA7B/128	Allotment 32 Section 43 City of Auckland
NA7B/468	Lot 8 Deposited Plan 14711
NA7B/469	Lot 7 Deposited Plan 14711
NA80B/14	Lot 1 Deposited Plan 136105
NA81B/904	Flat 1 Deposited Plan 137405, Lot 44 Deposited Plan 72391
NA81D/534	Flat 1 Deposited Plan 138156, Lot 10 Deposited Plan 77201
NA81D/539	Flat 2 Deposited Plan 138156, Lot 10 Deposited Plan 77201
NA82C/132	Lot 13 Deposited Plan 19404

NA82D/39	Lot 1 Deposited Plan 139263
NA82D/973	Flat 1 Deposited Plan 139671, Lot 7 Deposited Plan 77201
NA831/64	Part Lot 3 Deposited Plan 8224
NA84B/629	Flat 2 Deposited Plan 142242, Lot 7 Deposited Plan 77201
NA85B/764	Flat 1 Deposited Plan 143916, Lot 1 Deposited Plan 137944, Lot 5 Deposited Plan 137944
NA87A/68	Section 116 Eccleston No 2 West Settlement
NA88C/229	Part Section 1 Block V Otahuhu Survey District
NA88C/405	Lot 1-3 Section 11 Township of Pokeno
NA90/190	Part Lot 46 Deposited Plan 193, Part Lot 46 Deposited Plan 263
NA93B/541	Lot 3 Deposited Plan 156226
NA93D/408	Lot 4 Deposited Plan 51794
NA93D/409	Lot 5 Deposited Plan 51794
NA97A/994	Flat 1 Deposited Plan 161665, Lot 1 Deposited Plan 161273
NA98D/594	Flat 1 Deposited Plan 163982, Lot 34 Deposited Plan 62703
NA98D/595	Flat 2 Deposited Plan 163982 and Carport 3 Deposited Plan 163982, Lot 34 Deposited Plan 62703
NA9B/1159	Part Lot 8 Deposited Plan 50310

C36 C926281.1 Certificat

Cpy - 01/01, Pgs - 002, 11/03/14, 07:47



DocID: 514669541

TO: The District Land Registrar
Auckland Land Registry Office
Department of Justice
Private Bag
AUCKLAND

The Papakura District Council hereby gives notice that the Council has granted a building consent to the owner of the land in the Schedule pursuant to the provisions of Section 36(2) of the Building Act 1991. Building Consent No 11826.

SCHEDULE

All that land being Part Lot 1 Deposited Plan 84811 contained in Certificate of Title
~~41A/1148x~~ 67C/791

Signed on this10th..... day of ..OCTOBER... 1995

on behalf of the Papakura District Council


.....
T McLean
CHIEF EXECUTIVE OFFICER

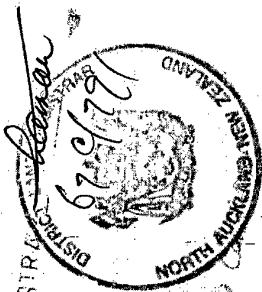
3179:WPHEALTH
JRC

11.53 4.6 NOV 95

C 526281.1

ARTILLERY INTEL N REGISTER
AND REGISTER AUCKLAND

LAND REGISTER



— 1 Note of building
from parent to section

— etc

etc



To: The District Land Registrar
Auckland Land Registry Office
Department of Justice
Private Bag
AUCKLAND

The Papakura District Council hereby gives notice that it has granted a building consent (Number 13924) to the owner of the land in the Schedule pursuant to the provisions of Section 36(2) of the Building Act 1991.

SCHEDULE

All that land described on CT67C/791 as Lot 1 DP 84811
and Lot 5 DP 93036 and being Part Allotment 7
Sections 4 and 5 Village of Papakura

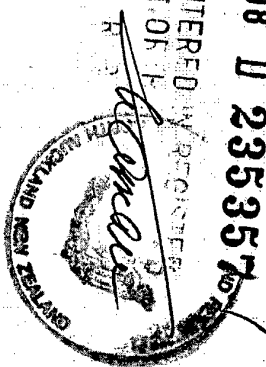
Signed on this 13th day of January 1998

on behalf of Papakura District Council

.....
T McLean
CHIEF EXECUTIVE OFFICER

13 JAN 1998 11:53:23

2.05 19.JAN98 D 235357
PARTICULARS ENTERED IN REGISTER
LAND REGISTRY 1 OF 1
ASST LAND REG



3.1.
(26(2))