

Attachment A – Maps to support application

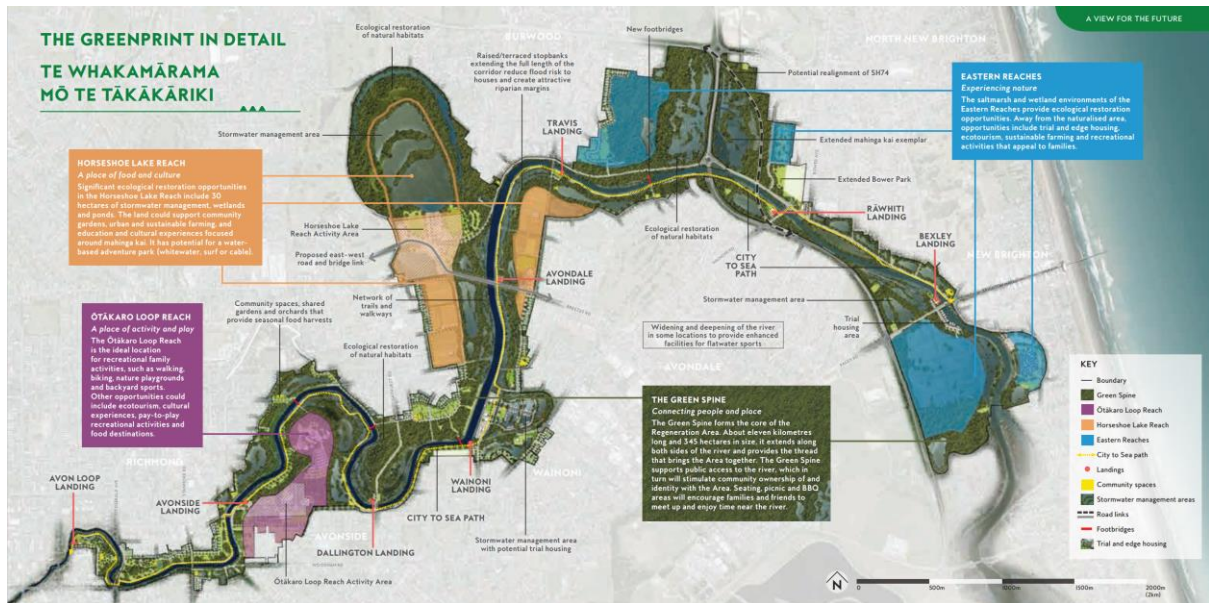


Figure 1 Ōtākaro Avon River Corridor Area

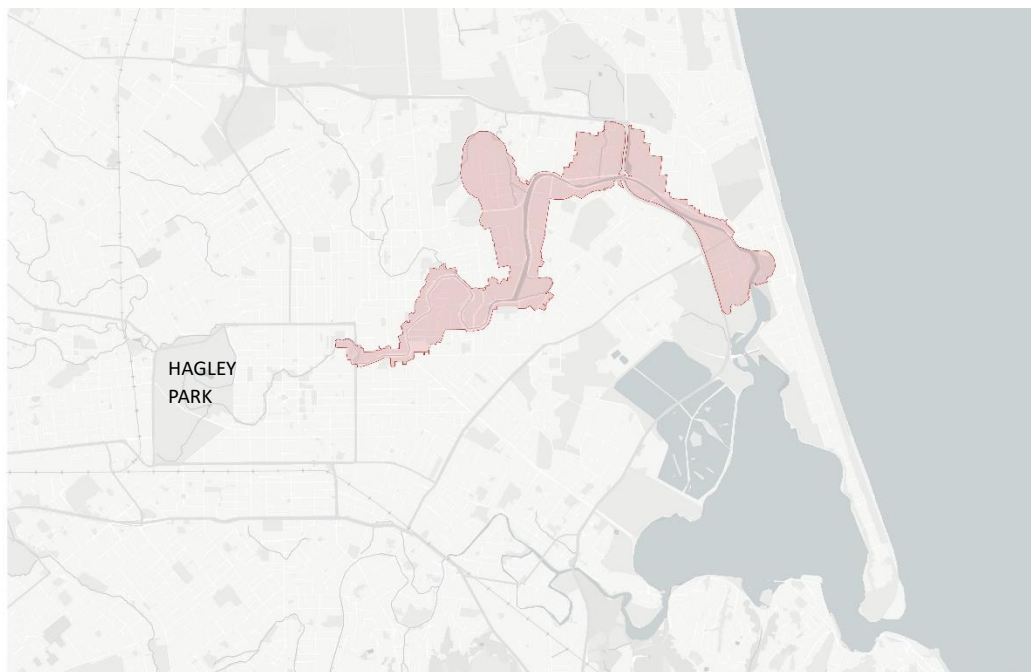


Figure 1A Ōtākaro Avon River Corridor within wider urban context

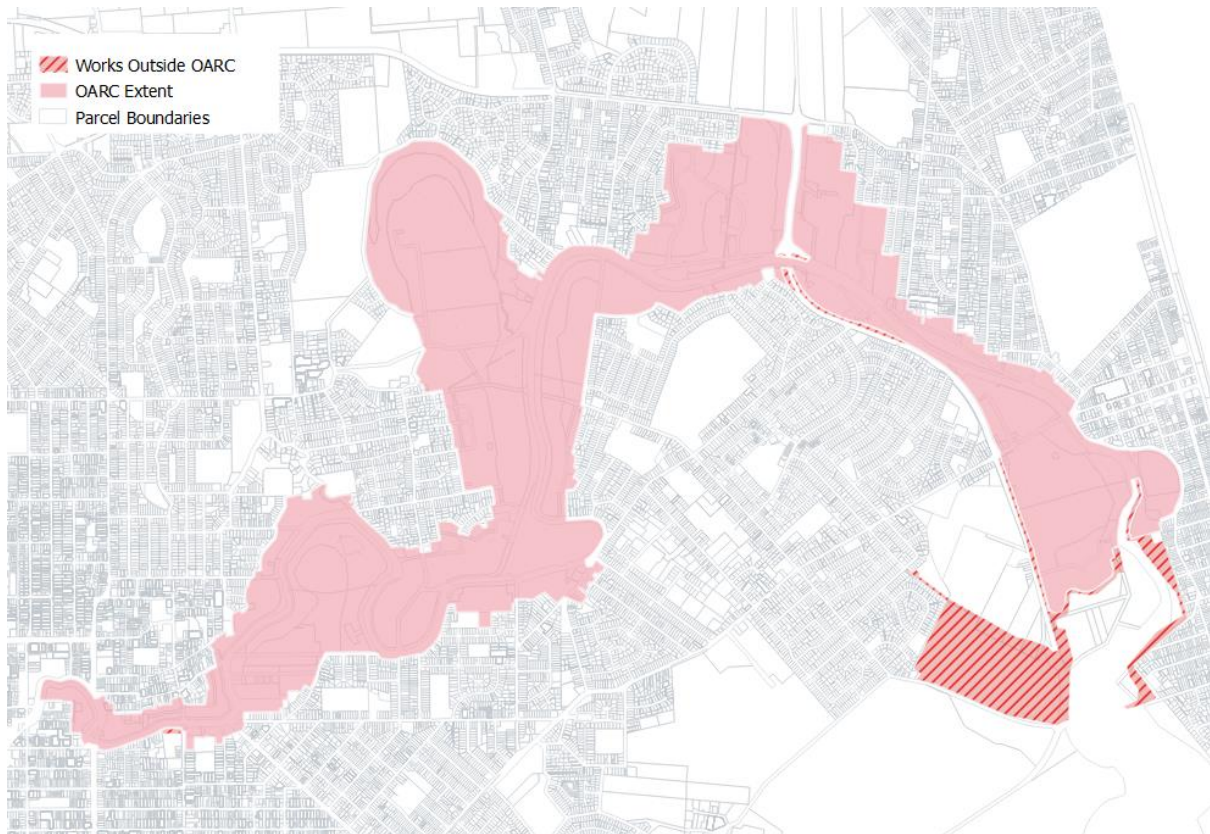


Figure 2 Areas outside of the Ōtākaro Avon River Corridor included in the application

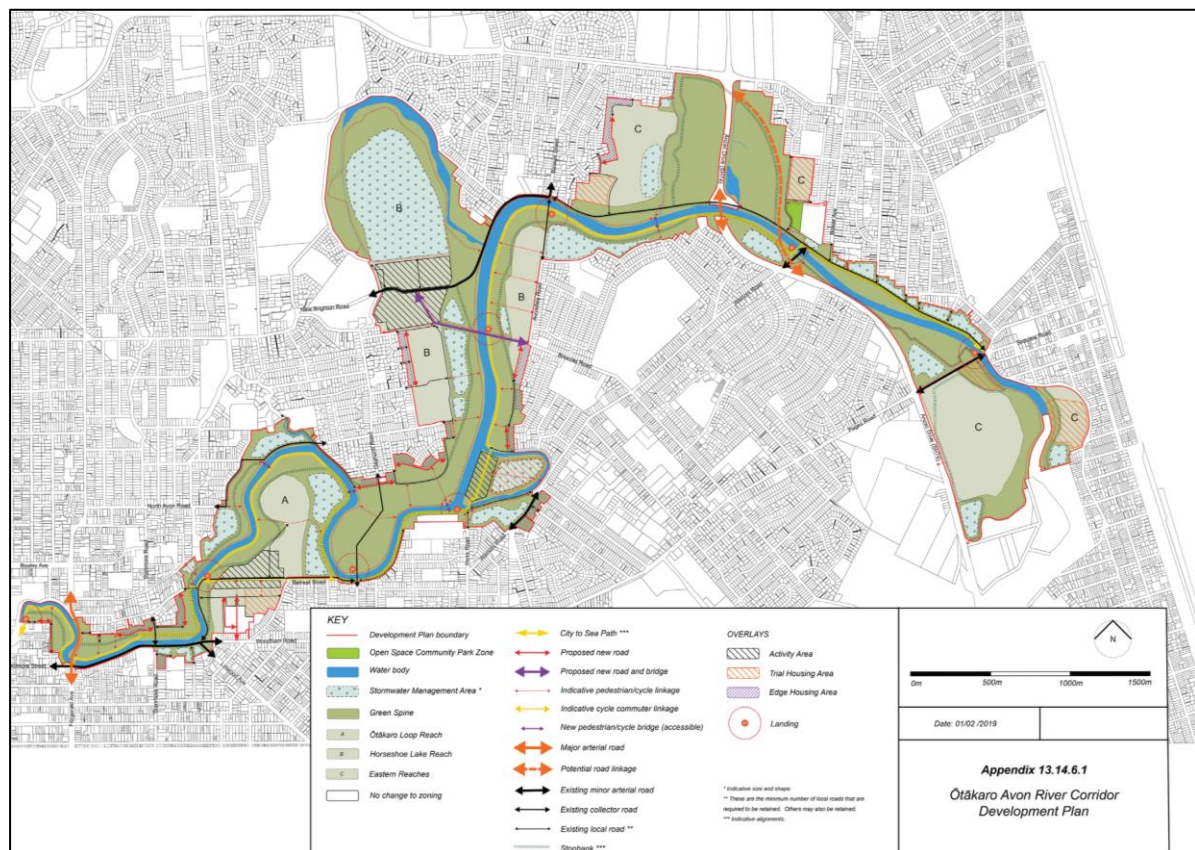


Figure 3 Ōtākaro Avon River Corridor Development Plan as included in the Regeneration Plan and Christchurch District Plan

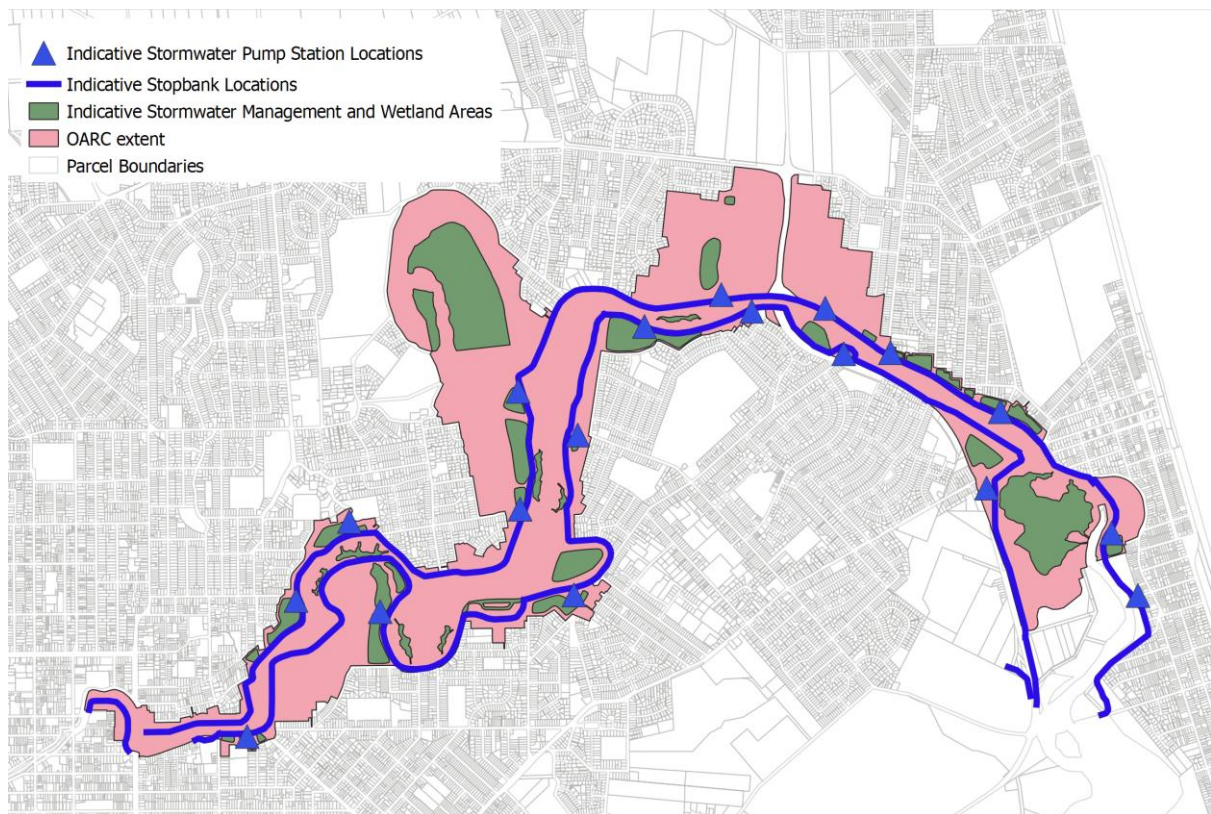


Figure 4 Indicative stopbank, stormwater management areas and stormwater pump station locations

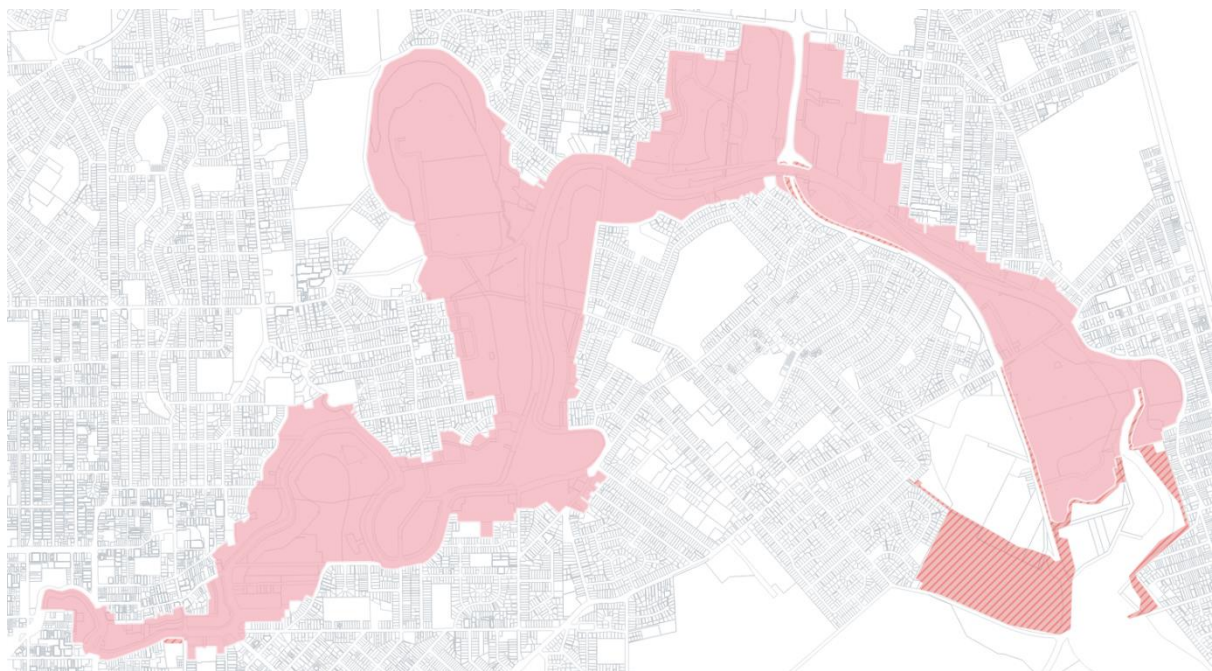


Figure 5 OARC boundary and the additional areas required beyond the OARC boundary

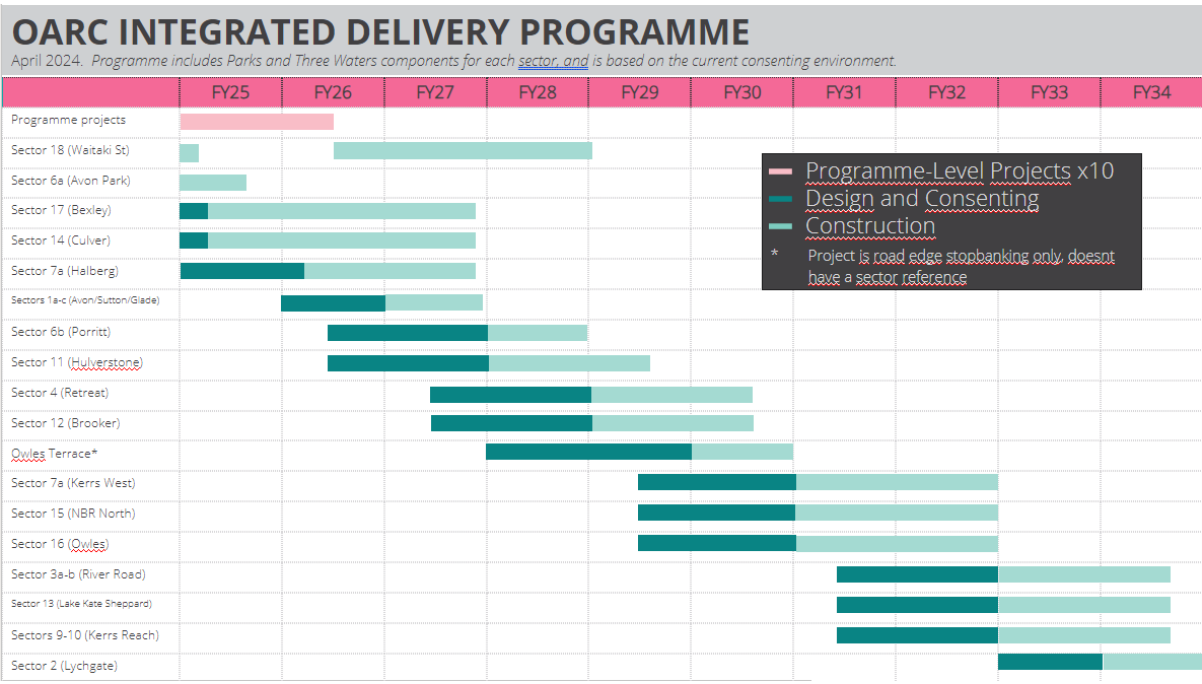


Figure 6 OARC integrated delivery programme

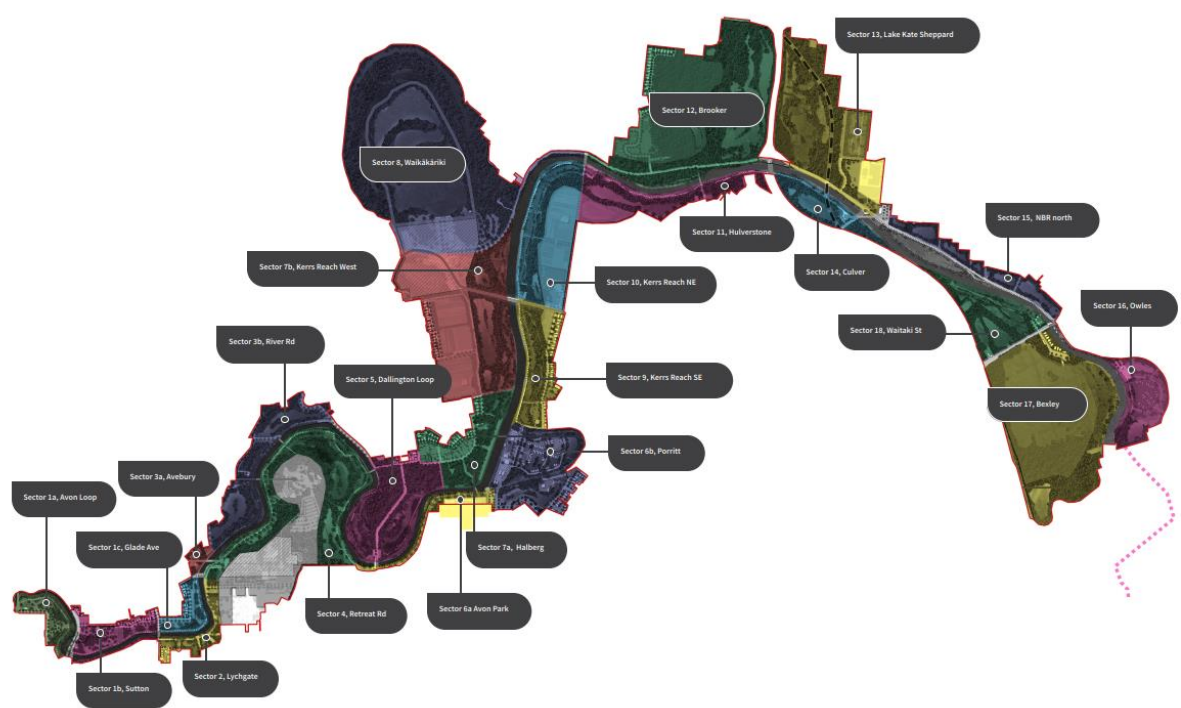


Figure 7 Geographical depiction of proposed sectors identified in the OARC integrated delivery programme

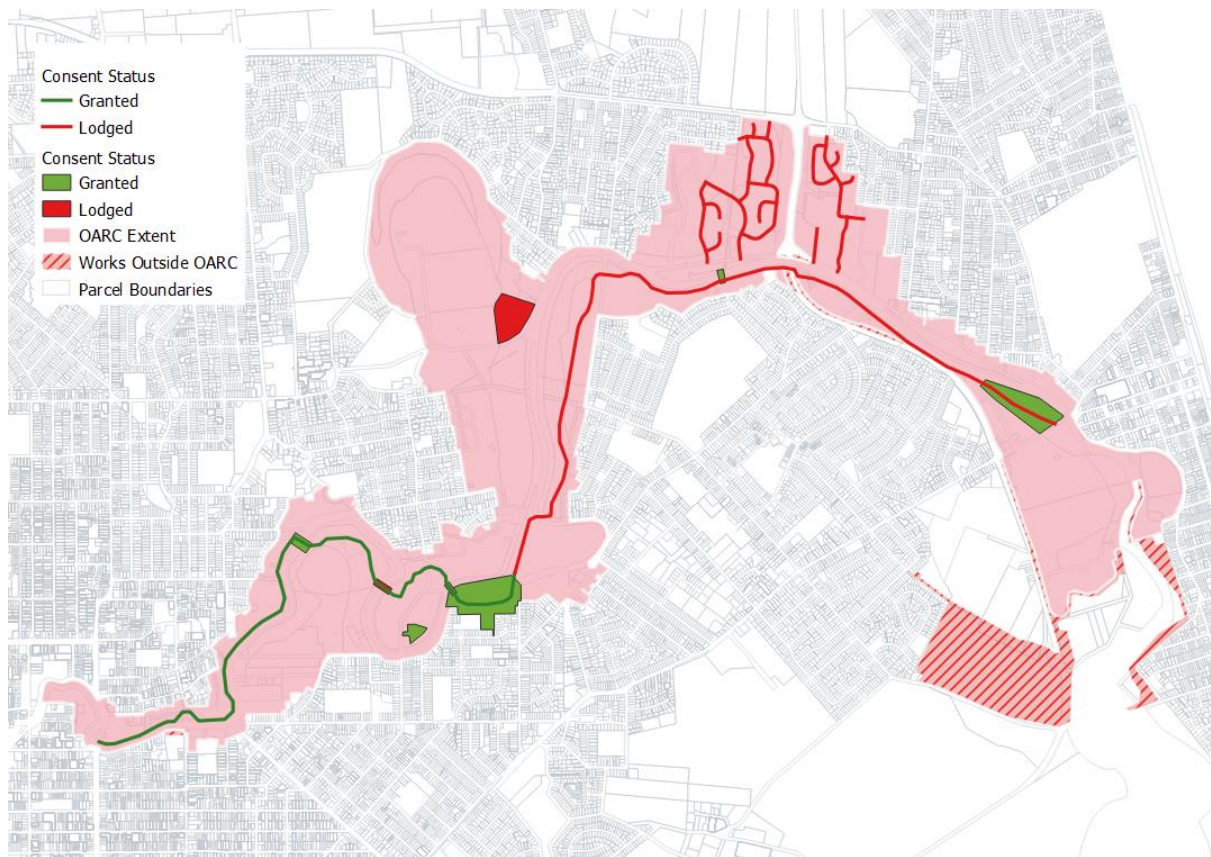


Figure 8 Consent status

Group of Activities

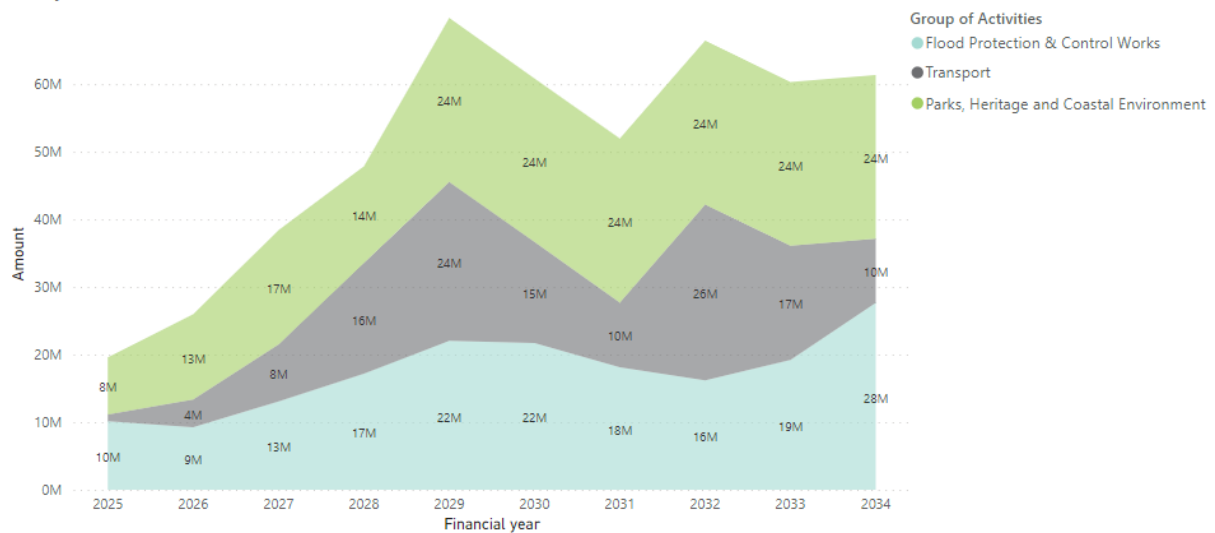


Figure 9 The Council's 10-year budget for the Corridor

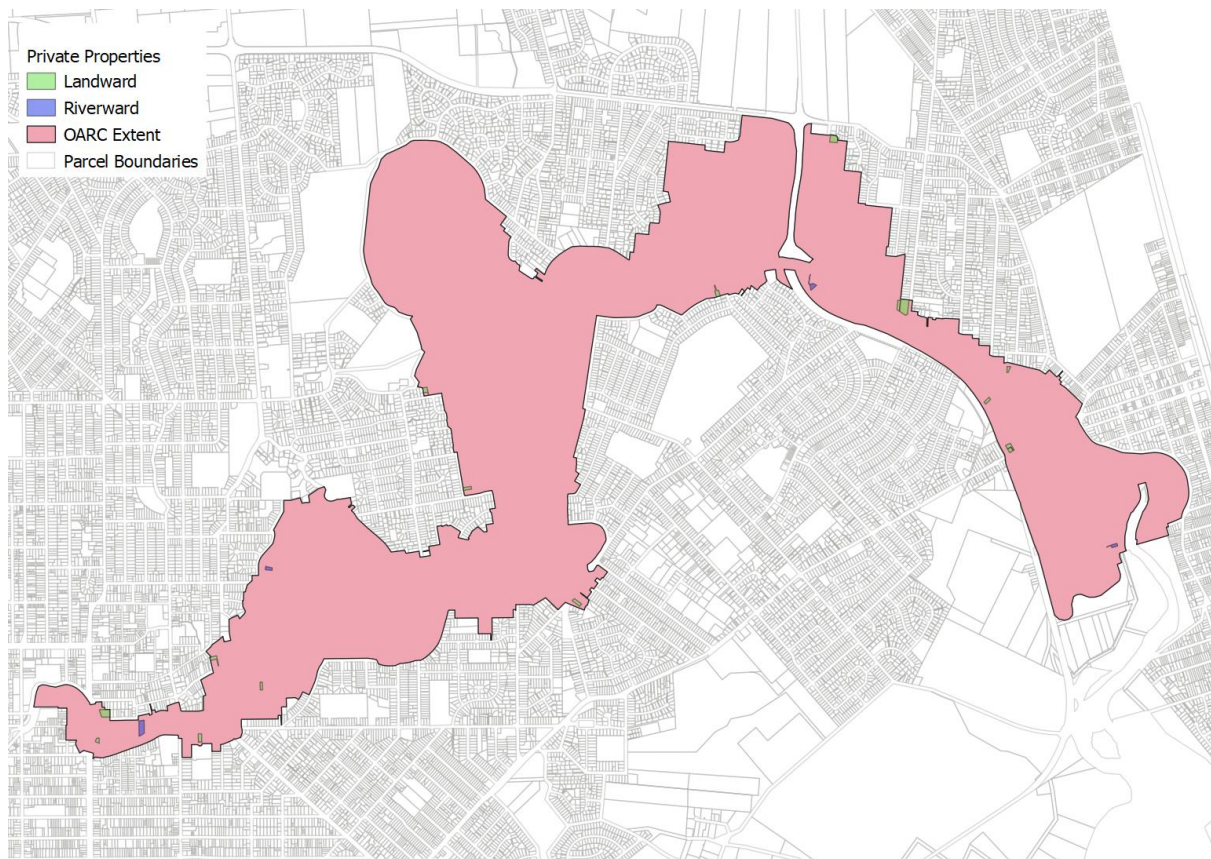


Figure 10 Private Properties within the OARC

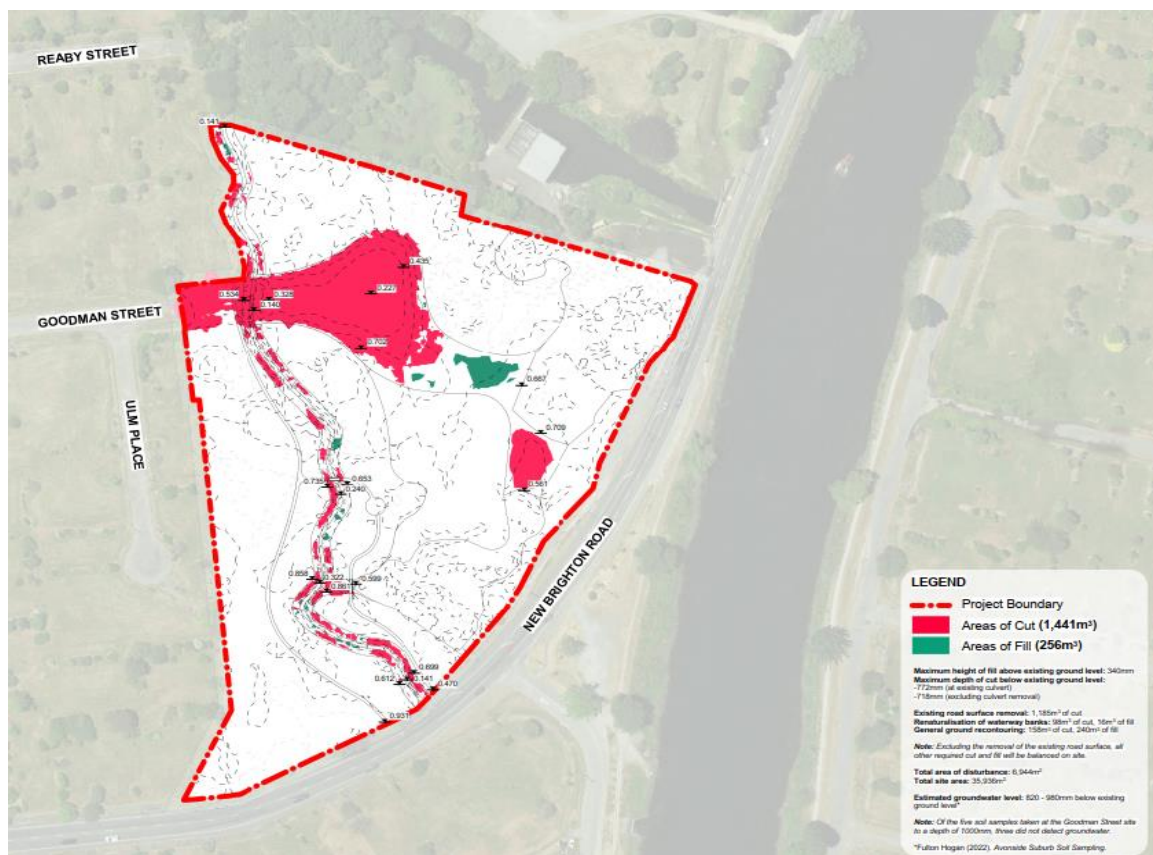


Figure 11 Reduced scope Goodman Street earthworks calculation

