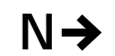


Landscape Masterplan

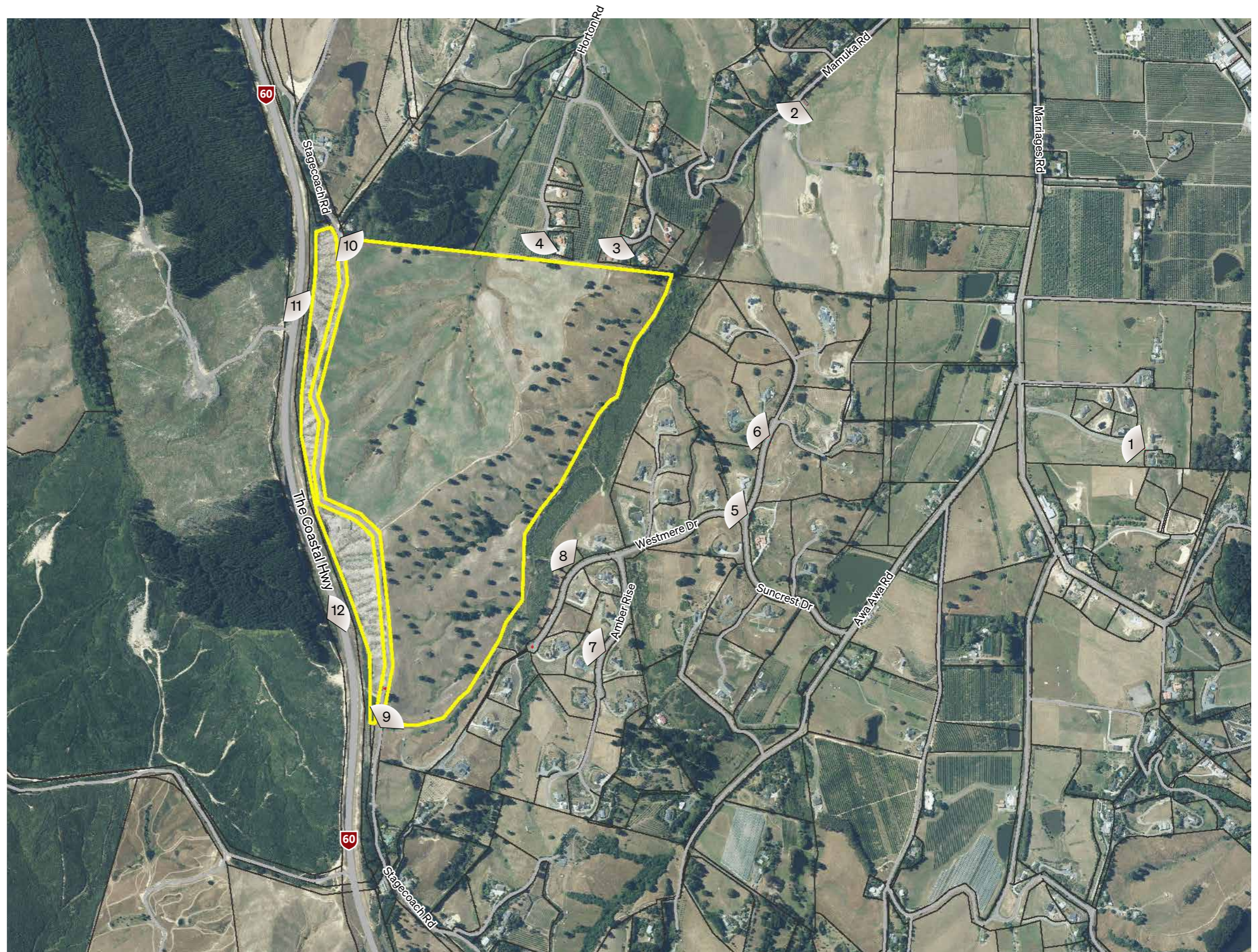
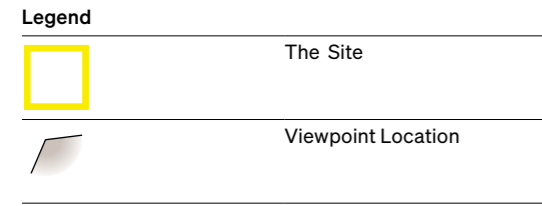


- ① Stagecoach Road improvements with tree planting to double as screening / backdrop planting
- ② Ridgeline road with clustered street tree planting to double as screening / backdrop planting
- ③ Roads to access cluster housing (typical)
- ④ Wetland planting network through gullies (typical)
- ⑤ Planted Stormwater retention basin with bund (typical)
- ⑥ Walking path (typical)
- ⑦ Neighbourhood reserve
- ⑧ Openspace
- ⑨ Native planting on edge of grassed effluent dispersal fields
- ⑩ Building platforms (typical)
- ⑪ Shared private right-of-ways (typical)
- ⑫ Letter Boxes



1:4,000 @ A3

Viewpoint Location Plan



Scale 1:10,000 @ A3
Data Source: LINZ Data Service

Viewpoint Location Photographs

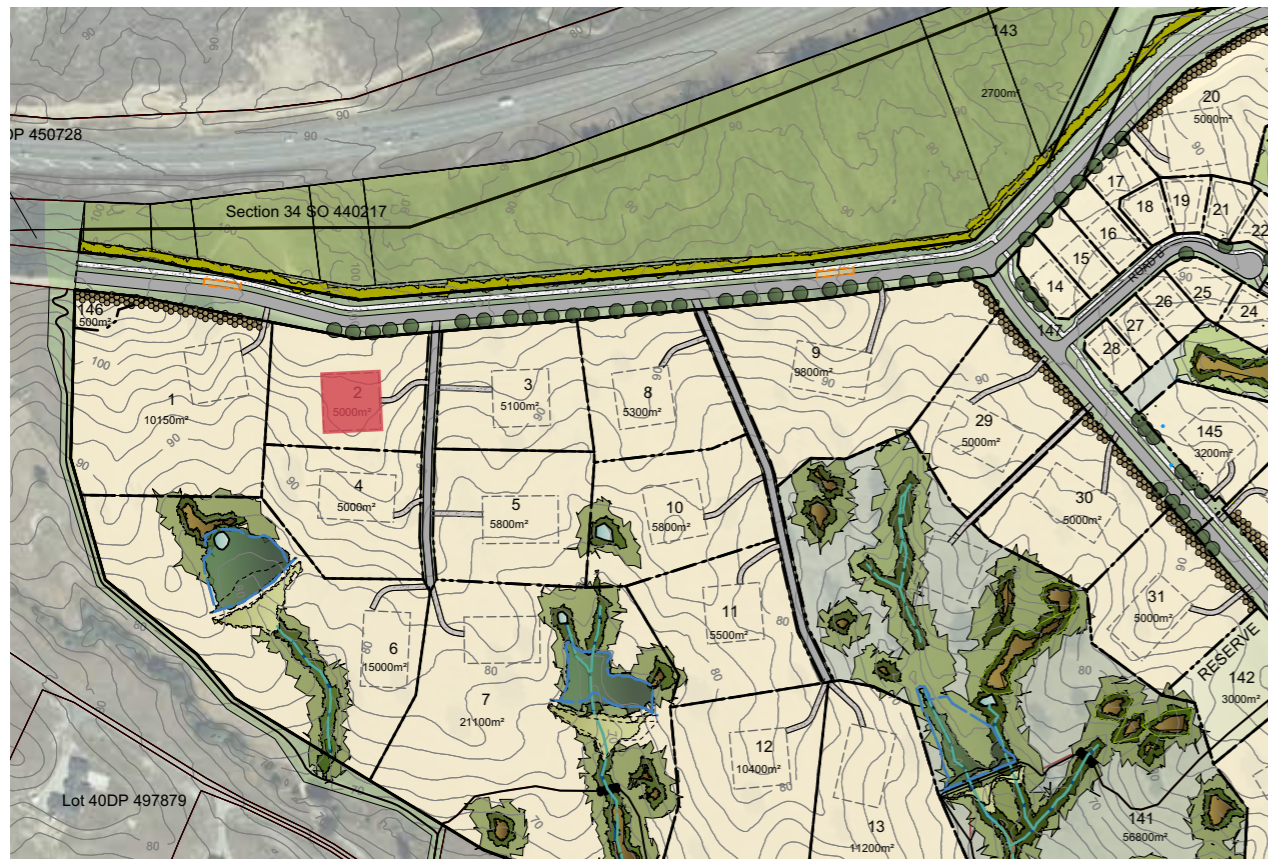


Viewpoint Location Photograph 1: Located on a private drive off Pomona Road (with access to 370, 372, and 374 Pomona drive) approximate 1.3 km from the site, looking west.

Viewpoint Location Photographs



Viewpoint Location Photograph 2: Located at the end of Mamaku Road approximately 500 m from the site, looking south.



Buildings visible above skyline from Viewpoint 2 = Lot 2

N → 1:4,000 @ A3

Viewpoint Location Photographs



Viewpoint Location Photograph 3: Located at the end of a private road in front of 207 Horton Road approximately 70 m from the site, looking south.



Viewpoint Location Photograph 4: Located at the end of a private road in front of 198 Horton Road approximately 50 m from the site, looking south.

Viewpoint Location Photographs



Viewpoint Location Photograph 5: Located at the intersection of Suncrest Drive and Westmere Drive approximate 450 m from the site, looking west.

Viewpoint Location Photographs



Viewpoint Location Photograph 6: Located at on Suncrest Drive in front of 61 Suncrest Drive approximately 400 m from the site, looking west.



Buildings visible above skyline from Viewpoint 6 = Lot 81

N → 1:4,000 @ A3