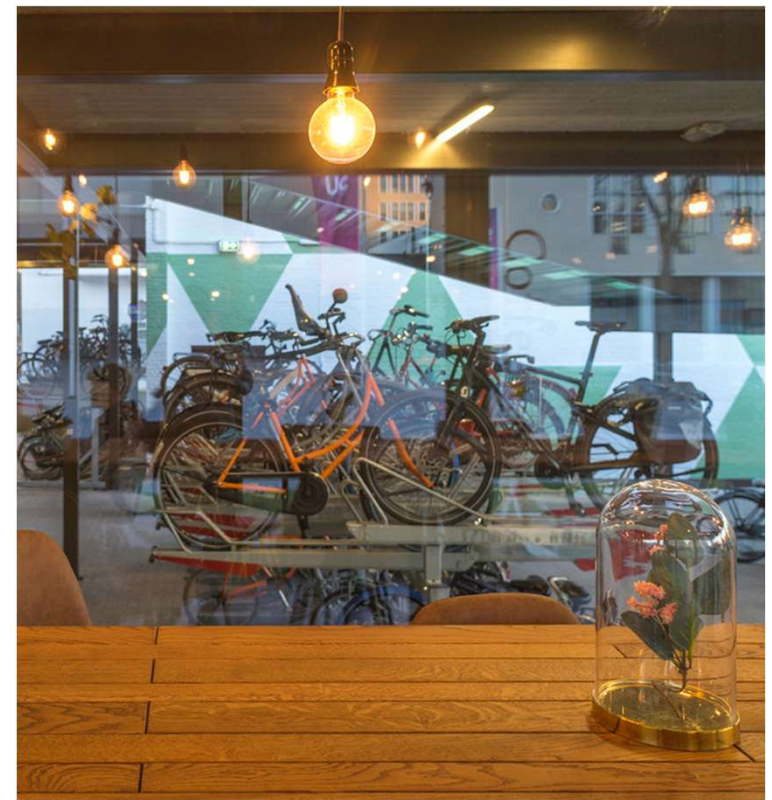




Stage 1 | Ambience



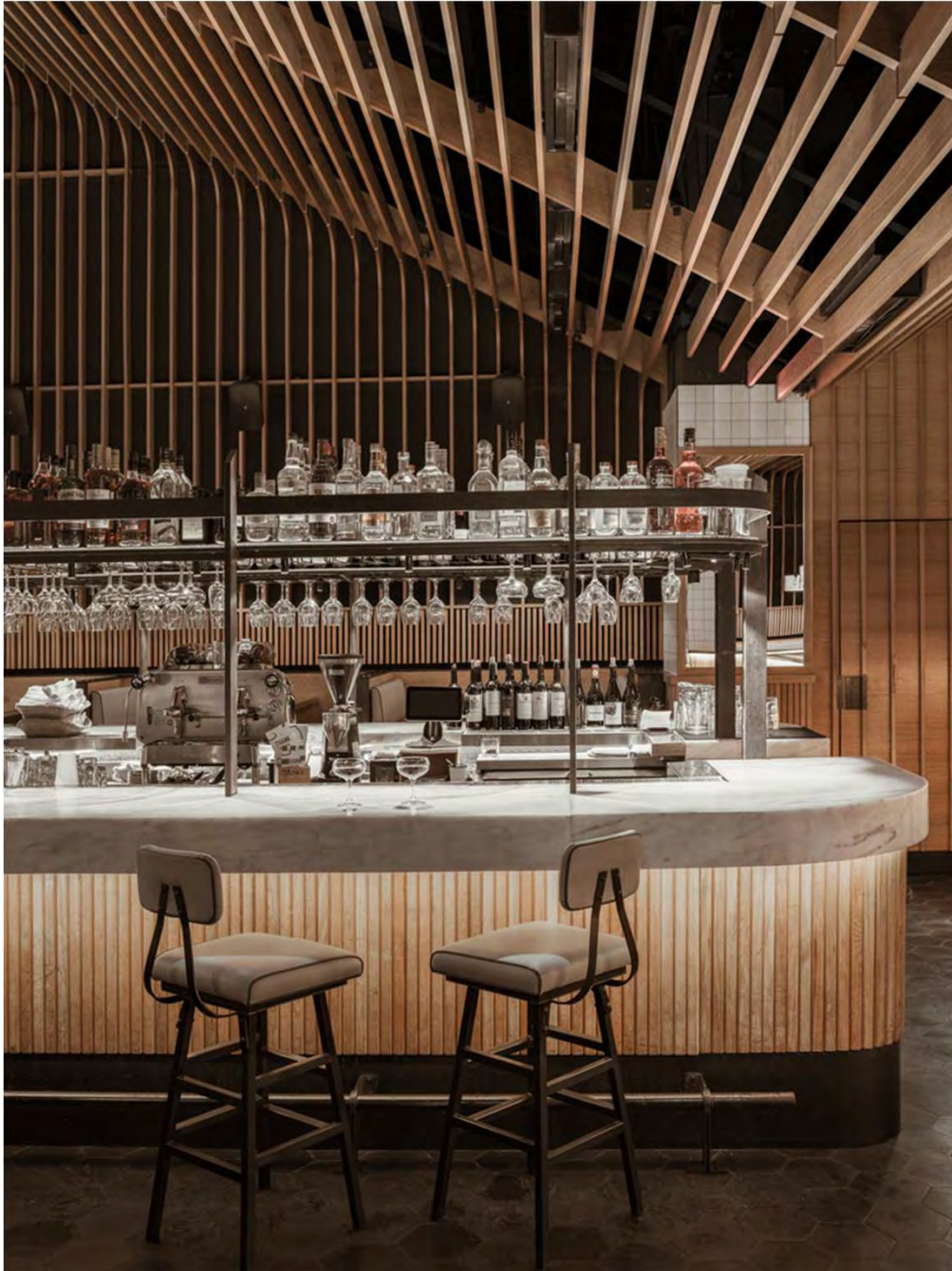
Stage 1 | Arrival Shops



Stage 1 | Arrival Shops, Organic Produce, Dessert



Stage 1 | Casual F&B



Stage 1 | Wine Shop & Bar



Stage 1 | Fine Dining



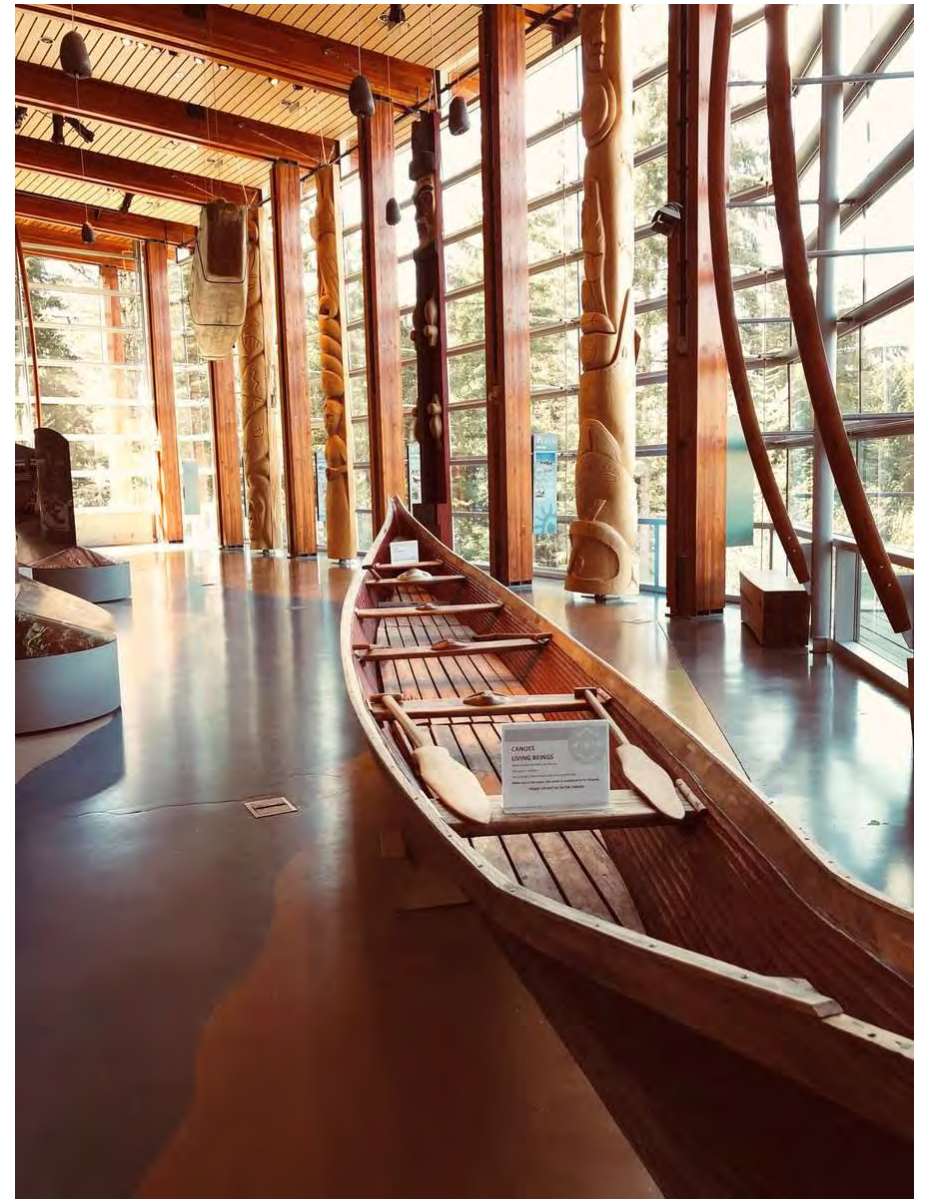
Stage 1 | Fine Dining



Stage 1 | Garden Restaurant



Stage 1 | Cooking School



Stage 2 | Art Gallery, Culture



Rākau māori Native timber

What wood is best for carving? Different timber has different qualities, so we use a variety of native woods. All the native timber that we use grows in its natural environment.

Hard and soft woods

Hard woods grow slowly, which makes them dense and heavy. Though they can be difficult to carve, hard woods are good for tough and durable objects such as weapons. Some trees grow quickly, which makes the wood relatively soft. Soft woods are easier to carve and particularly good for large objects.

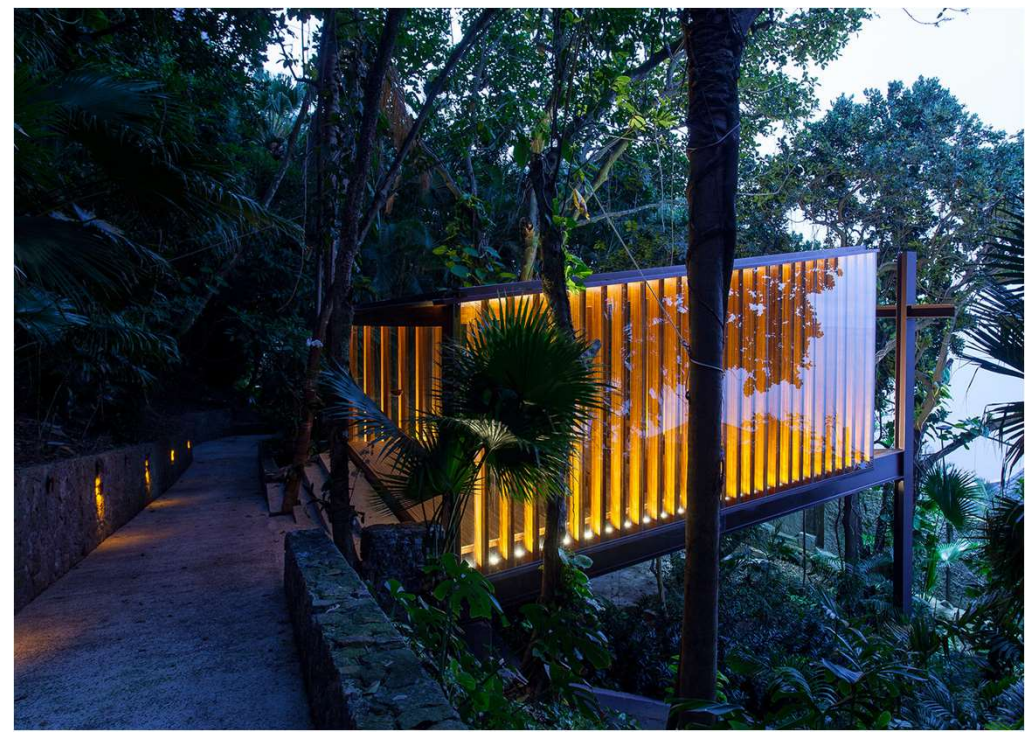




Stage 2 | Asian F&B



Stage 2 | Banquet Wedding



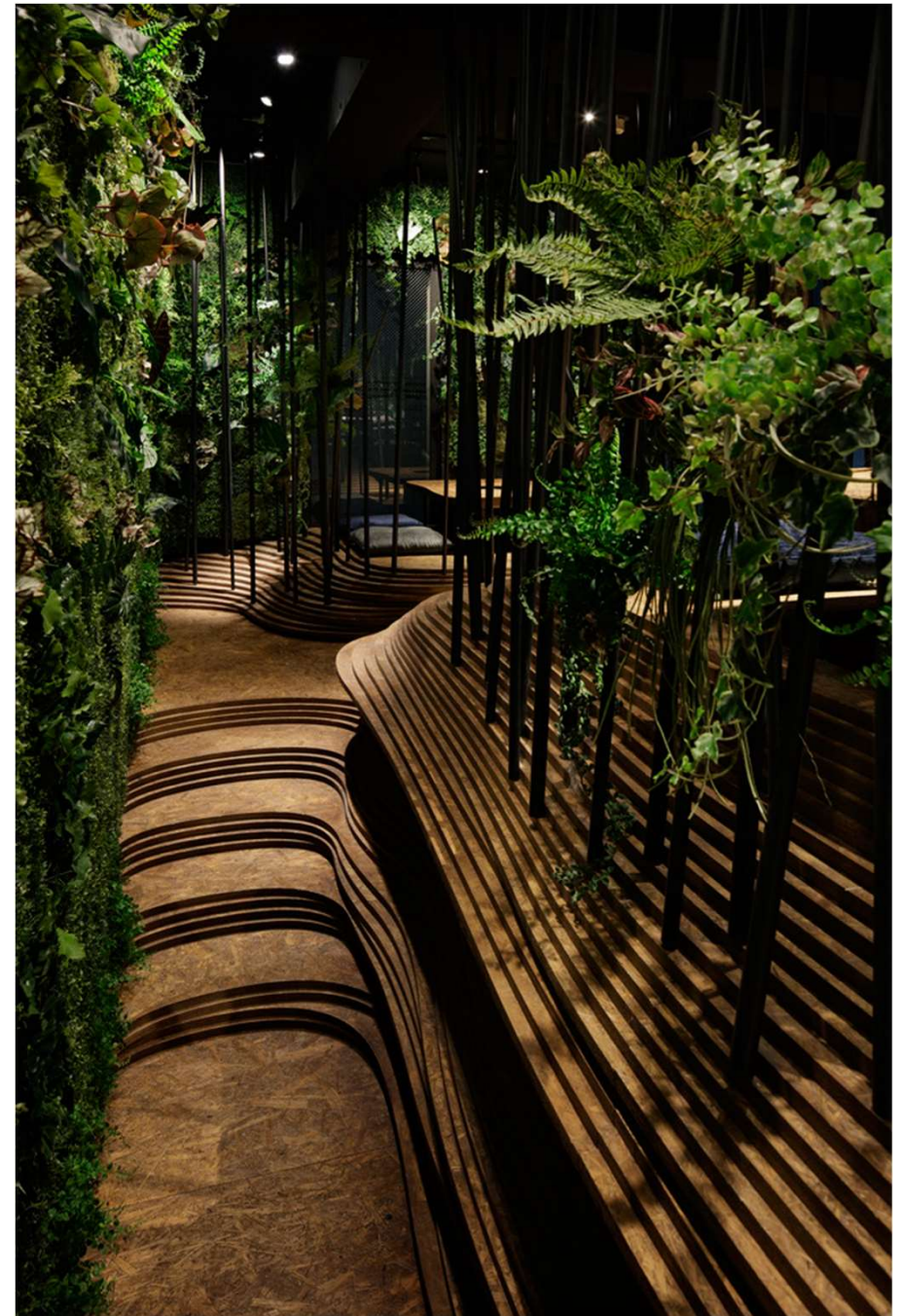
Stage 2 | Lecture Theatre, Wedding Chapel



Stage 2 | Village Green



Stage 3 | Outdoor Theatre



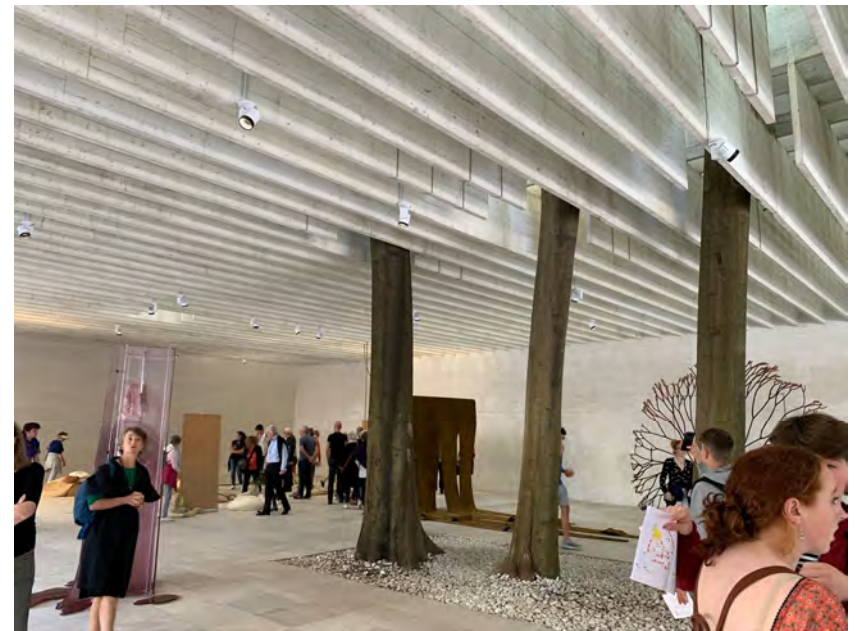
Stage 3 | Environmental Museum



Stage 3 | Environmental Museum



Stage 3 | Riverside F&B + Activities, Wharf



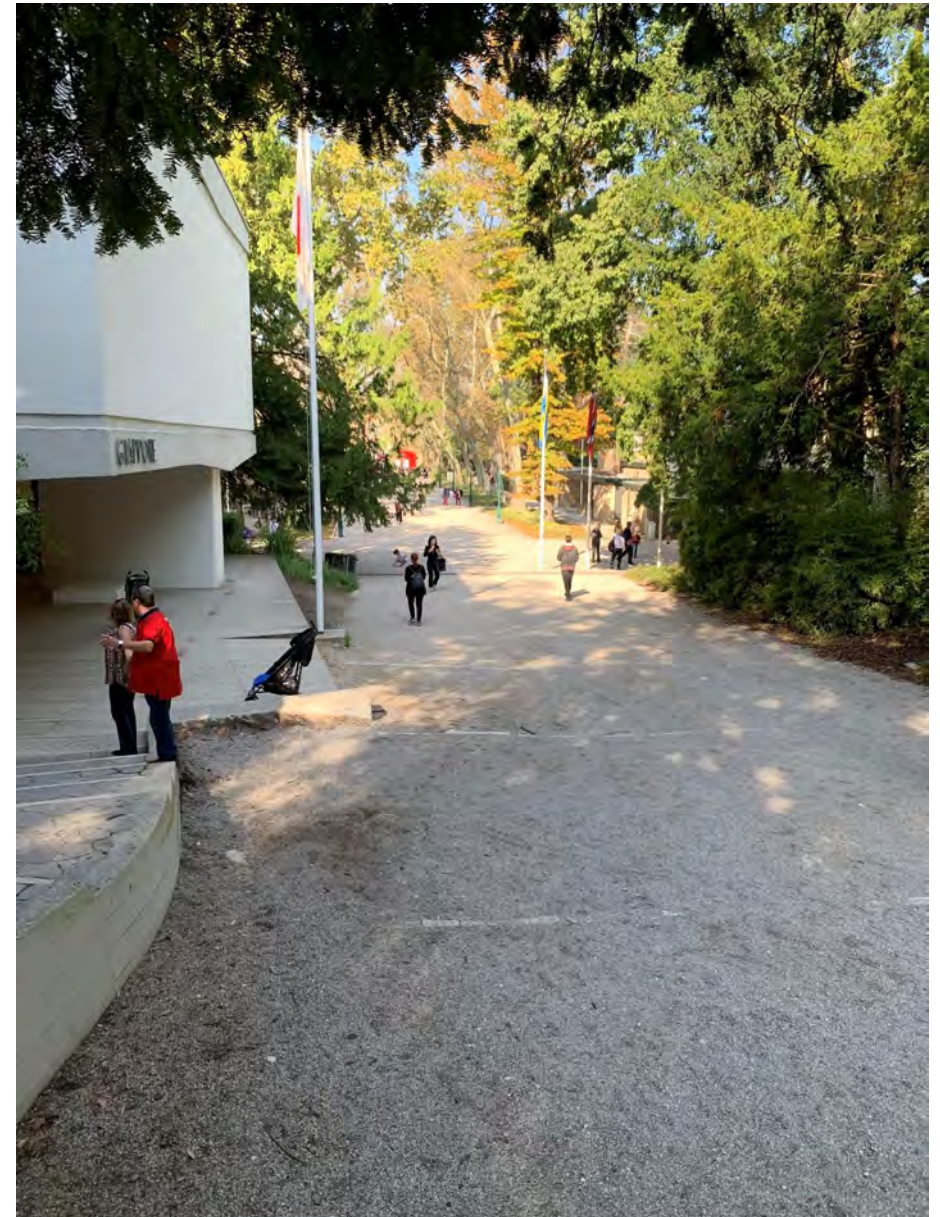
Stage 4 | Exposition: Ticketing + Entry



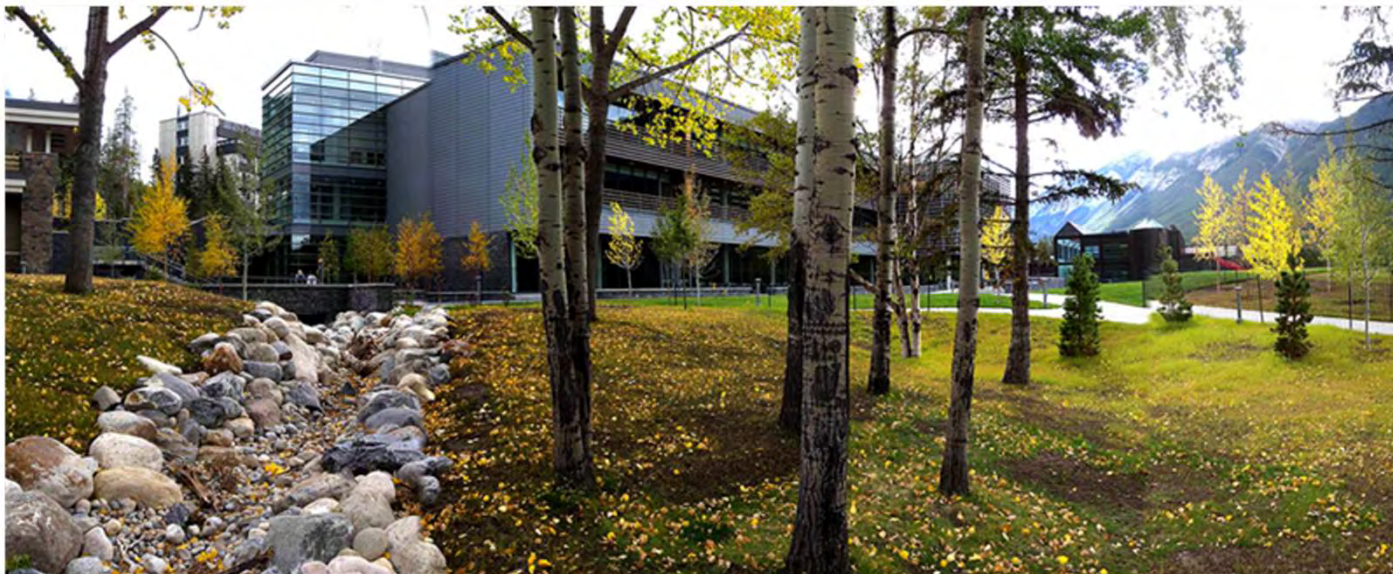
Stage 6 | Exposition Central



Stage 7 | Orchards & Gardens



Stage 8 | Exposition Avenue



Stage 9 | Institutes



Stage 10 | Exposition Extension



QPV 1 | Gondola Base



QUEENSTOWN PARK VILLAGE | TRAILS & BRIDGES



QUEENSTOWN PARK VILLAGE | ACTIVITIES



QUEENSTOWN PARK VILLAGE | GLAMPING