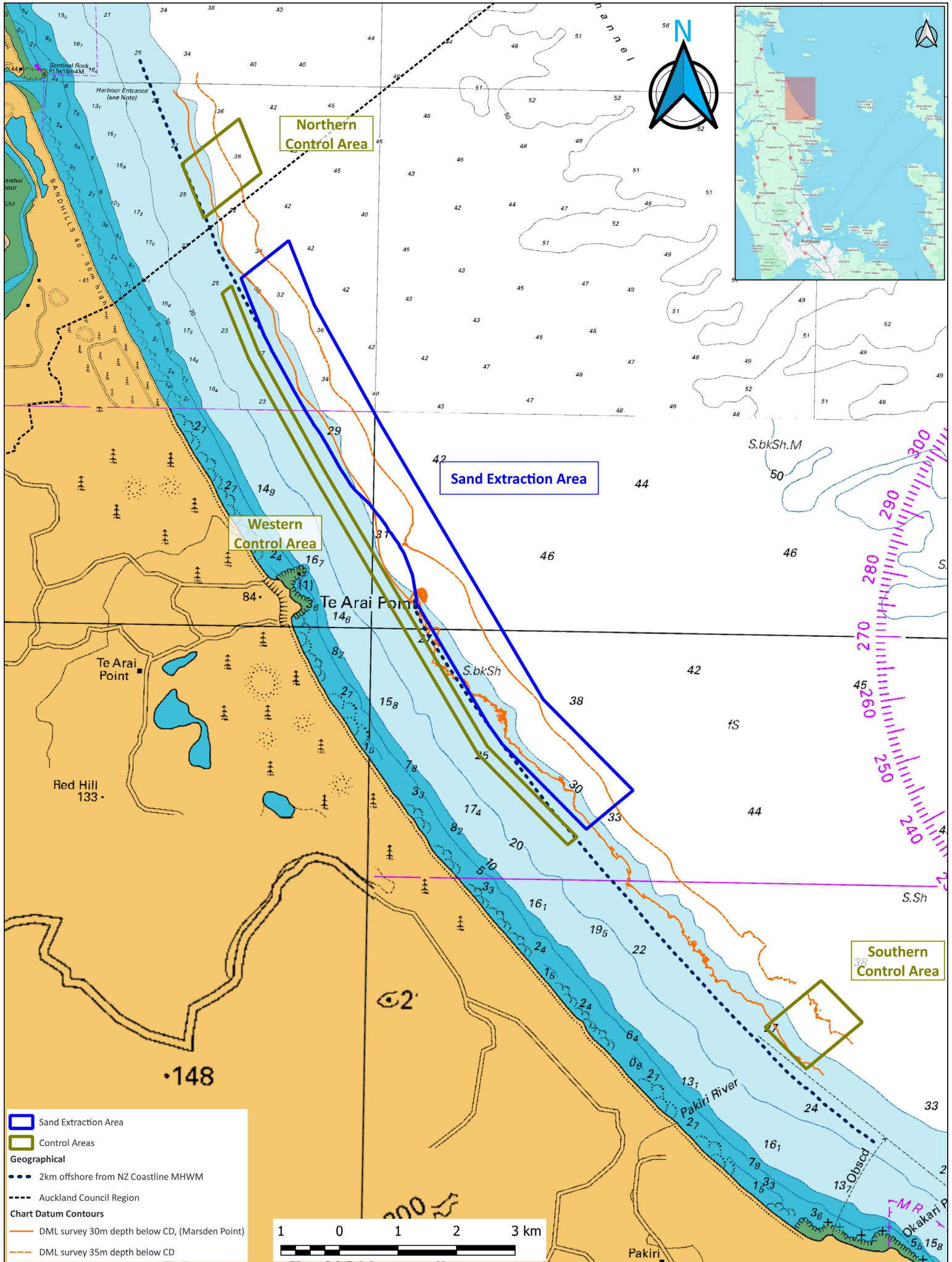
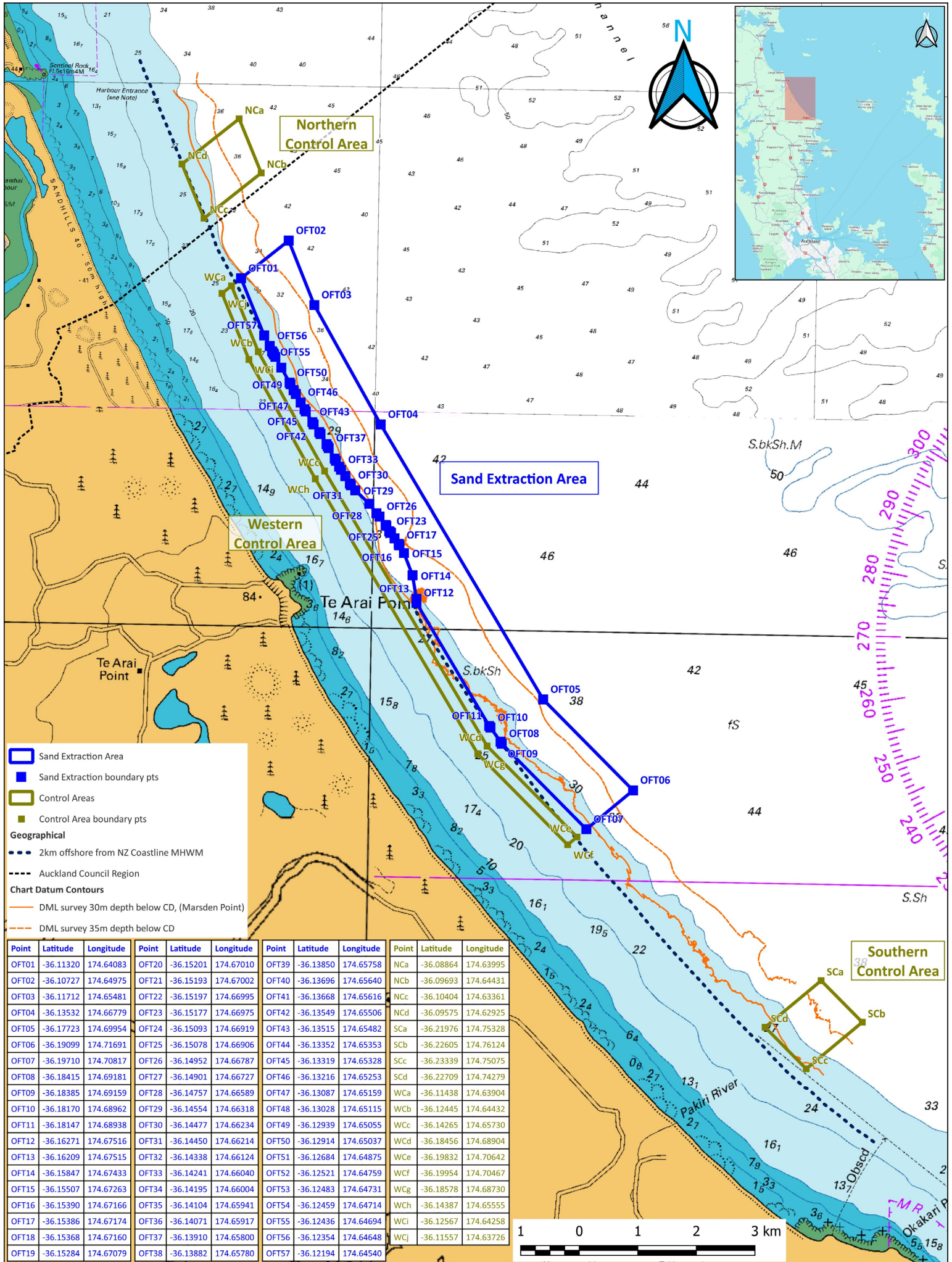


# Attachment 1







- Sand Extraction Area
- Sand Extraction boundary pts
- Control Areas
- Control Area boundary pts
- Geographical
  - 2km offshore from NZ Coastline MHWM
  - Auckland Council Region
- Chart Datum Contours
  - DML survey 30m depth below CD, (Marsden Point)
  - DML survey 35m depth below CD

Point	Latitude	Longitude	Point	Latitude	Longitude	Point	Latitude	Longitude	Point	Latitude	Longitude
OFT01	-36.11320	174.64083	OFT20	-36.15201	174.67010	OFT39	-36.13850	174.65758	NCa	-36.08864	174.63995
OFT02	-36.10727	174.64975	OFT21	-36.15193	174.67002	OFT40	-36.13696	174.65640	NCb	-36.09693	174.64431
OFT03	-36.11712	174.65481	OFT22	-36.15197	174.66995	OFT41	-36.13668	174.65616	NCc	-36.10404	174.63361
OFT04	-36.13532	174.66779	OFT23	-36.15177	174.66975	OFT42	-36.13549	174.65506	NCd	-36.09575	174.62925
OFT05	-36.17723	174.69954	OFT24	-36.15093	174.66919	OFT43	-36.13515	174.65482	SCa	-36.21976	174.75328
OFT06	-36.19099	174.71691	OFT25	-36.15078	174.66906	OFT44	-36.13352	174.65353	SCb	-36.22605	174.76124
OFT07	-36.19710	174.70817	OFT26	-36.14952	174.66787	OFT45	-36.13319	174.65328	SCc	-36.23339	174.75075
OFT08	-36.18415	174.69181	OFT27	-36.14901	174.66727	OFT46	-36.13216	174.65253	SCd	-36.22709	174.74279
OFT09	-36.18385	174.69159	OFT28	-36.14757	174.66589	OFT47	-36.13087	174.65159	WCa	-36.11438	174.63904
OFT10	-36.18170	174.68962	OFT29	-36.14554	174.66318	OFT48	-36.13028	174.65115	WCb	-36.12445	174.64432
OFT11	-36.18147	174.68938	OFT30	-36.14477	174.66234	OFT49	-36.12939	174.65055	WCC	-36.14265	174.65730
OFT12	-36.16271	174.67516	OFT31	-36.14450	174.66214	OFT50	-36.12914	174.65037	WCD	-36.18456	174.68904
OFT13	-36.16209	174.67515	OFT32	-36.14338	174.66124	OFT51	-36.12684	174.64875	WCE	-36.19832	174.70642
OFT14	-36.15847	174.67433	OFT33	-36.14241	174.66040	OFT52	-36.12521	174.64759	WCF	-36.19954	174.70467
OFT15	-36.15507	174.67263	OFT34	-36.14195	174.66004	OFT53	-36.12483	174.64731	WCG	-36.18578	174.68730
OFT16	-36.15390	174.67166	OFT35	-36.14104	174.65941	OFT54	-36.12459	174.64714	WCh	-36.14387	174.65555
OFT17	-36.15386	174.67174	OFT36	-36.14071	174.65917	OFT55	-36.12436	174.64694	WCI	-36.12567	174.64258
OFT18	-36.15368	174.67160	OFT37	-36.13910	174.65800	OFT56	-36.12354	174.64648	WCJ	-36.11557	174.63726
OFT19	-36.15284	174.67079	OFT38	-36.13882	174.65780	OFT57	-36.12194	174.64540			

