

Cardrona Village and Lodge Reconsenting

Various plans



Figure 1: Cardrona Village Consent (light green outline): “Subject Site”; and Lodge Consent (darker green outline): “Lodge Site”.

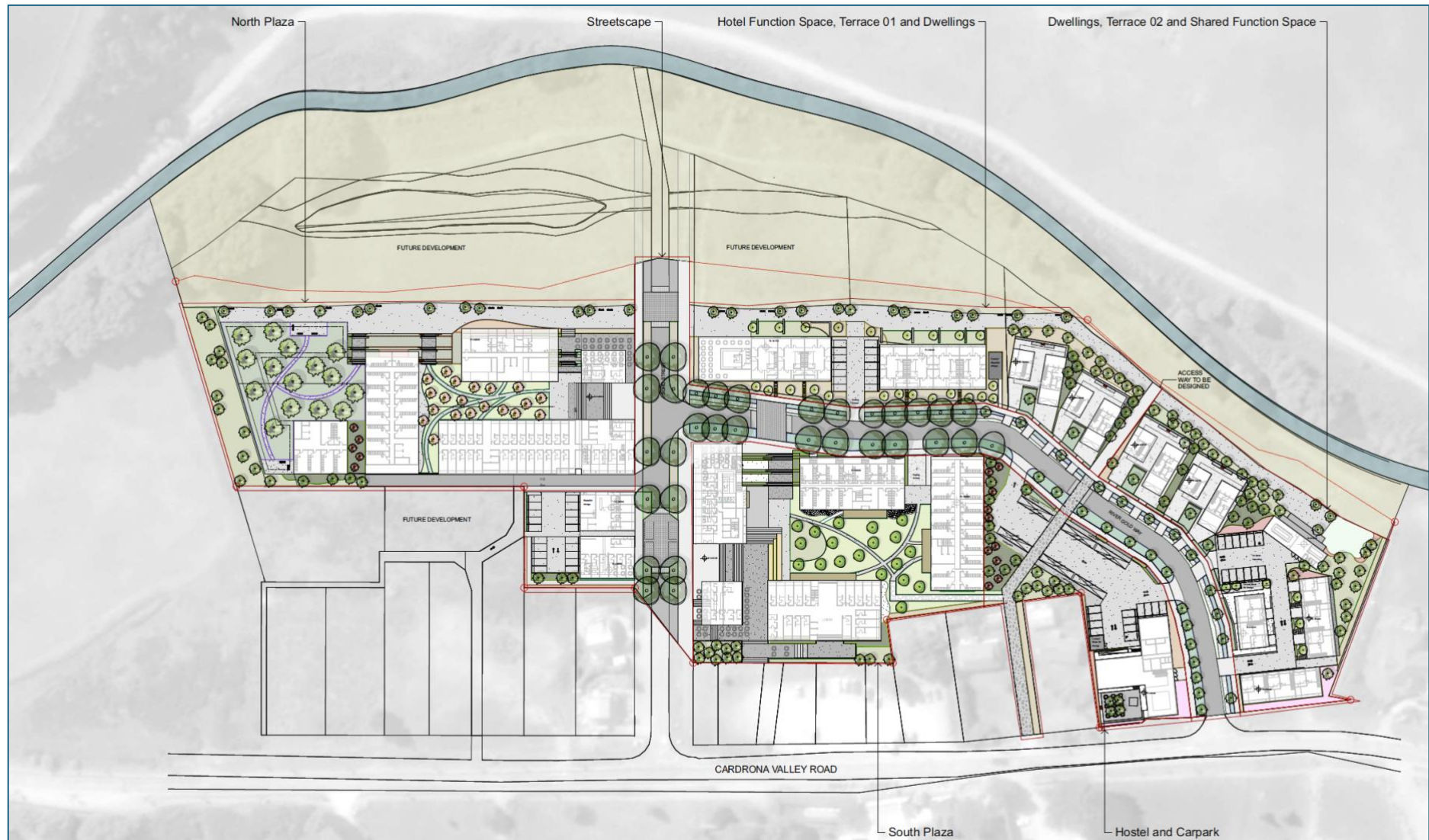


Figure 2: Cardrona Village consent: Masterplan



Figure 3: Cardrona Village consent: Block layout and activities

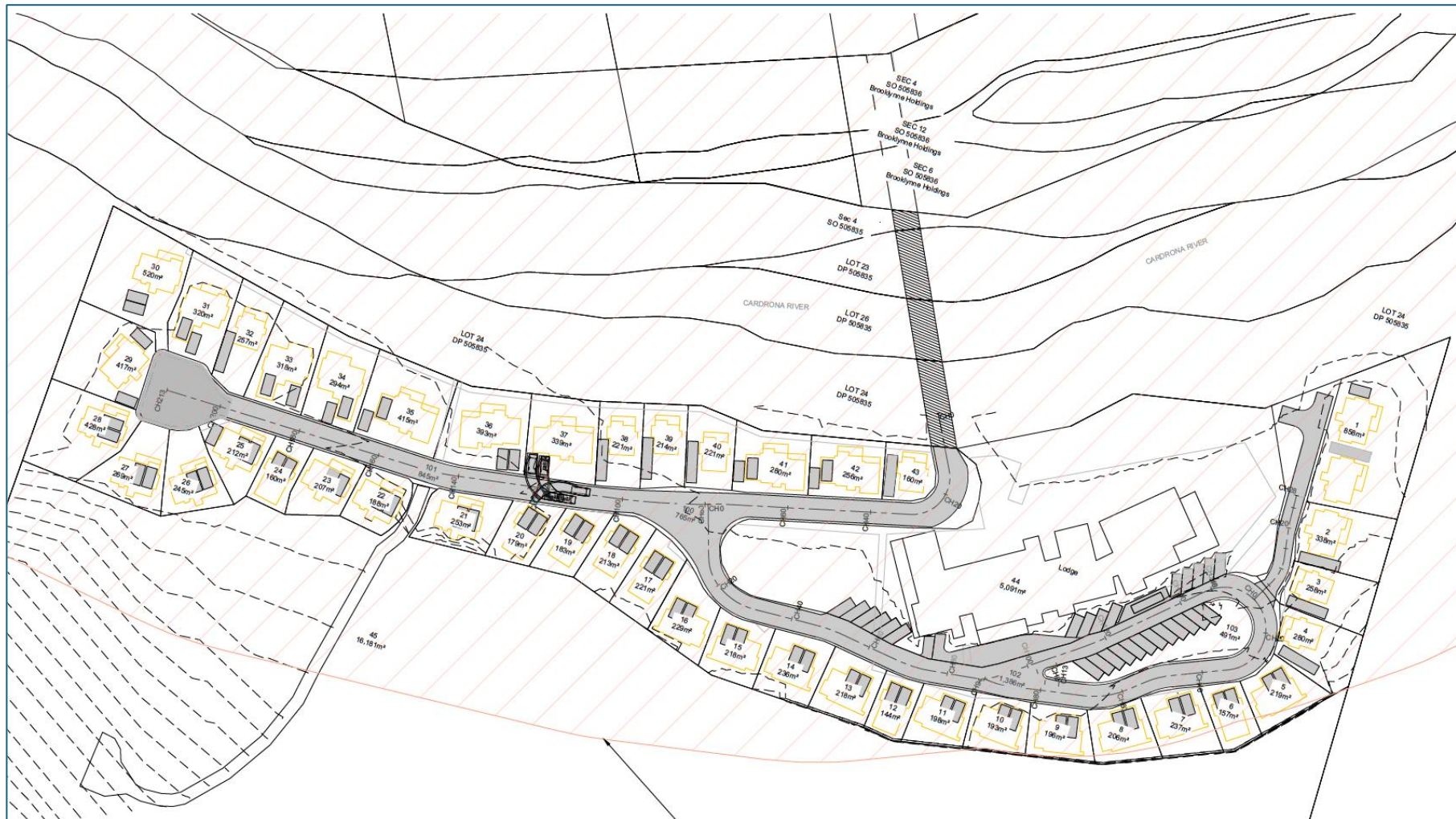


Figure 4: “Lodge Site”, subdivision detail.



Figure 5: "Lodge Site", Masterplan.

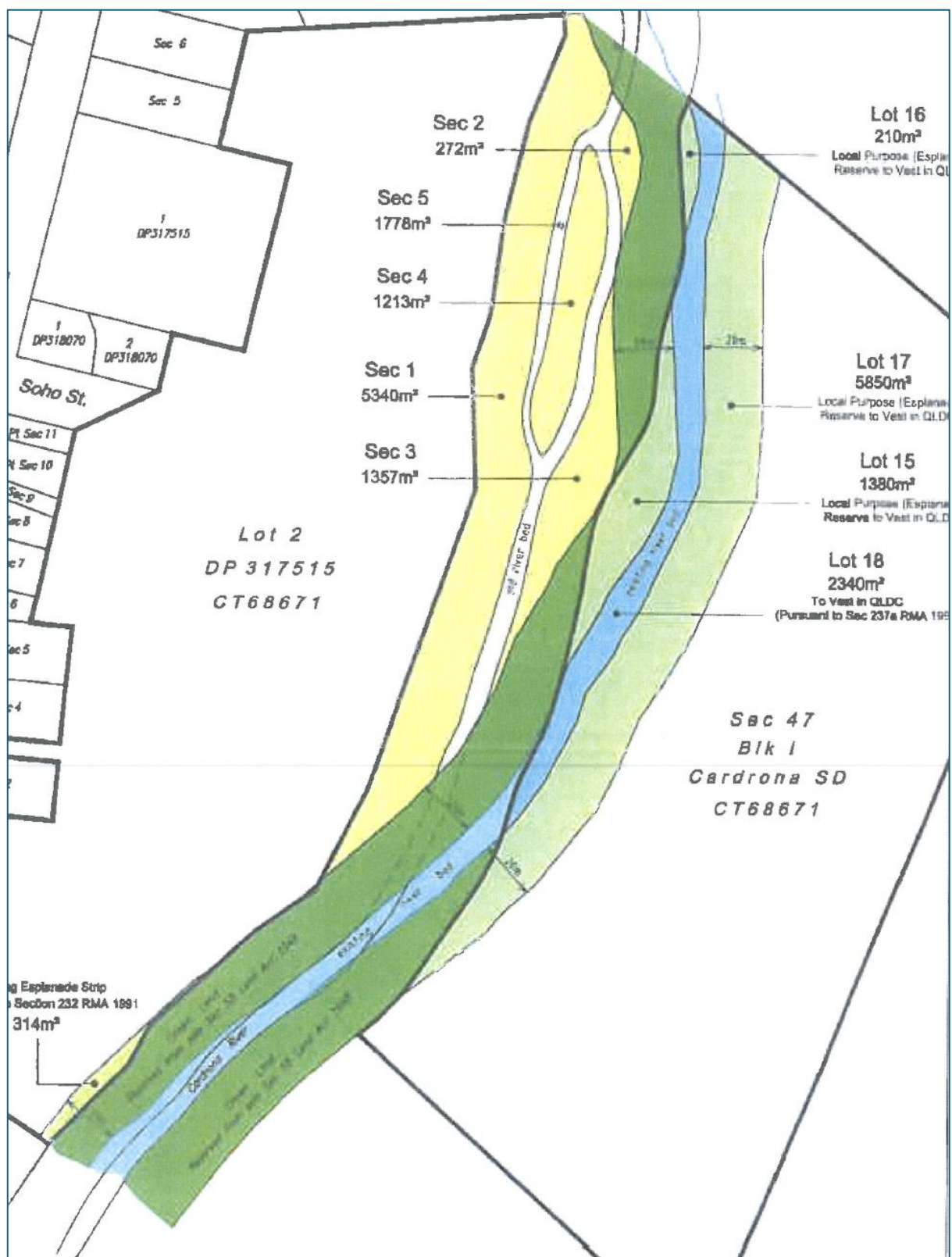


Figure 6: Marginal Strip/ land exchange.



Figure 7: Easement requirements (overview).

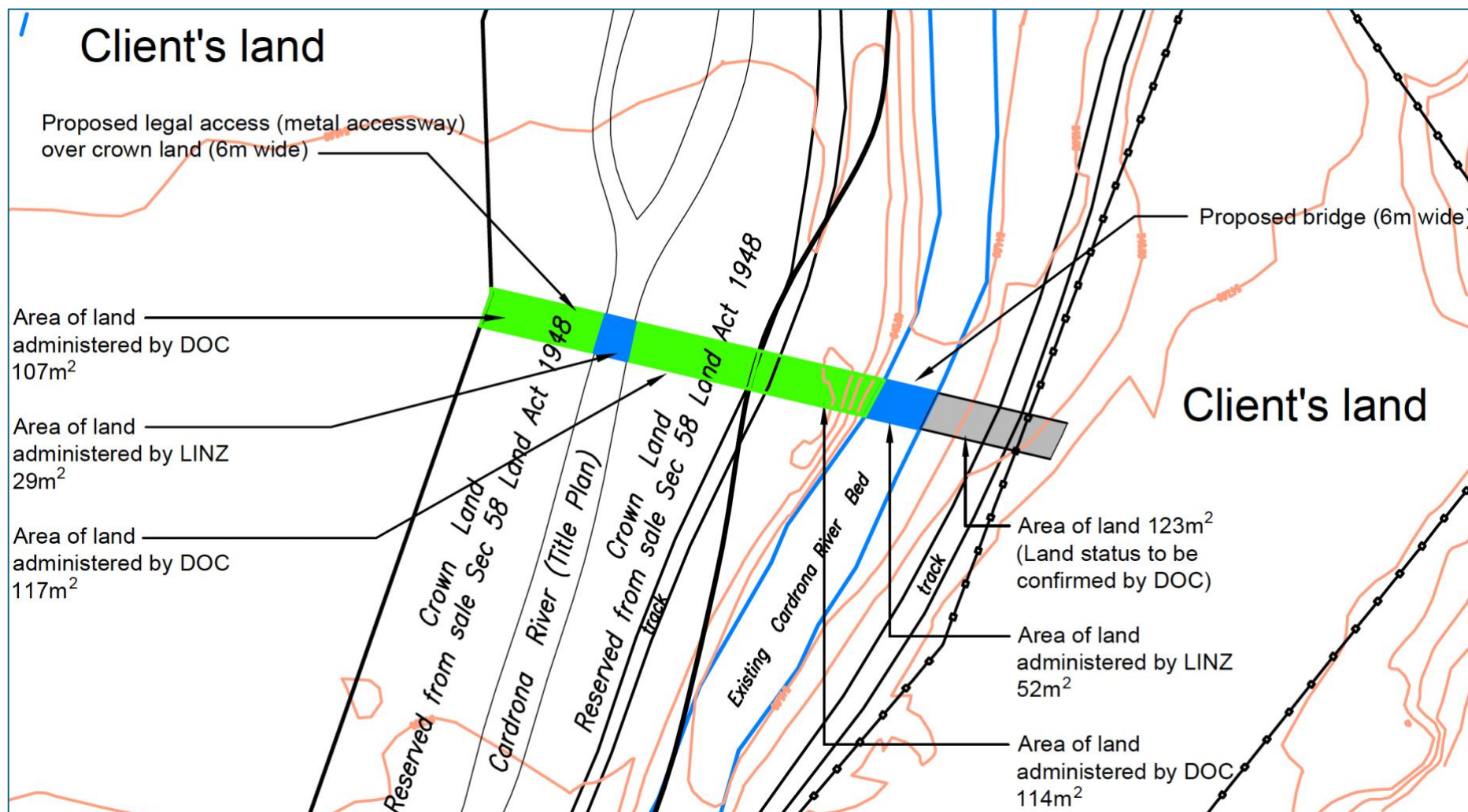


Figure 8: Easement requirements (detail).



Figure 9: Context and vision

1. A new entry road from Cardrona Valley Road in the north linking to Rivergold Way

2. This would (a) provide an alternate vehicle route (resilience) but more importantly (b) support commercial activity more broadly in the village core.

3. A riverfront promenade featuring quality trails and amenity – linking to wider recreational networks and Wanaka in the north.

4. New walking and cycling connections to the Mt Cardrona Station trail network.

5. Landmark / showcase building or exclusive large-lot housing.

6. Lodge or Hotel on elevated position with forecourt entry on flats.

7. Pedestrian/ cycle connections linking from riverfront promenade to the historic Cardona Hotel and developing Mainstreet.

8. Priority viewshafts – elevated treatment to showcase vistas and visual links.

