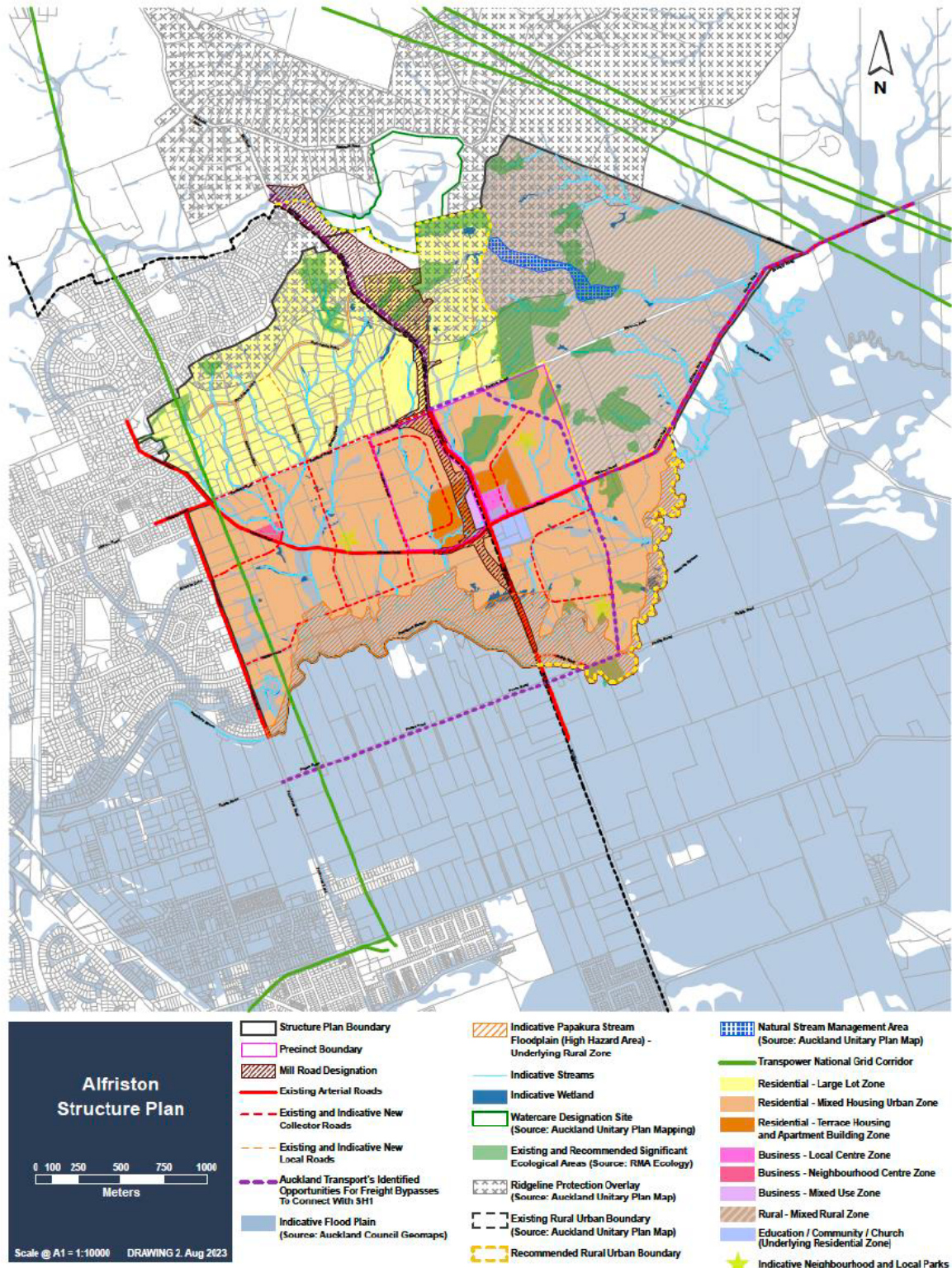
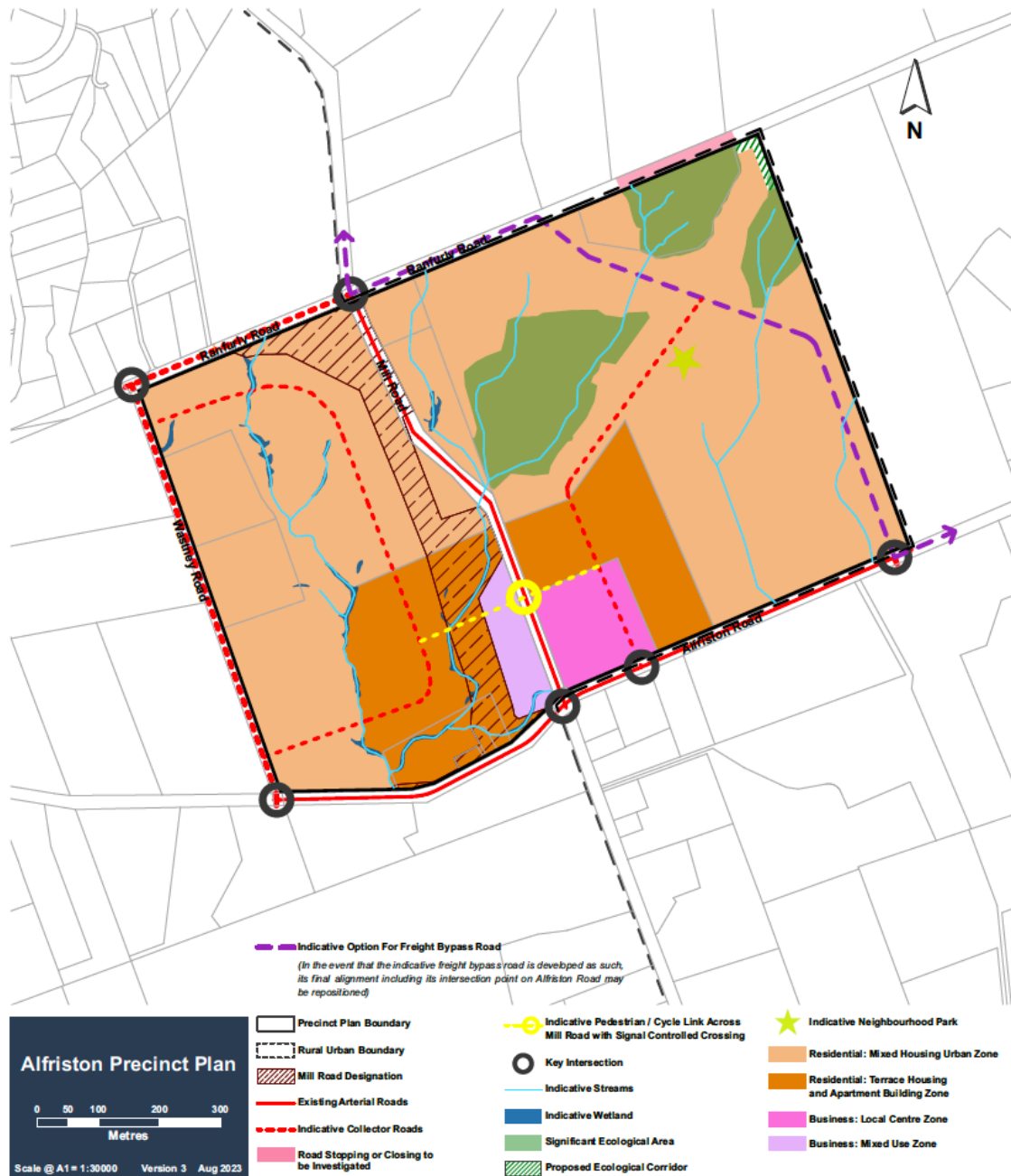


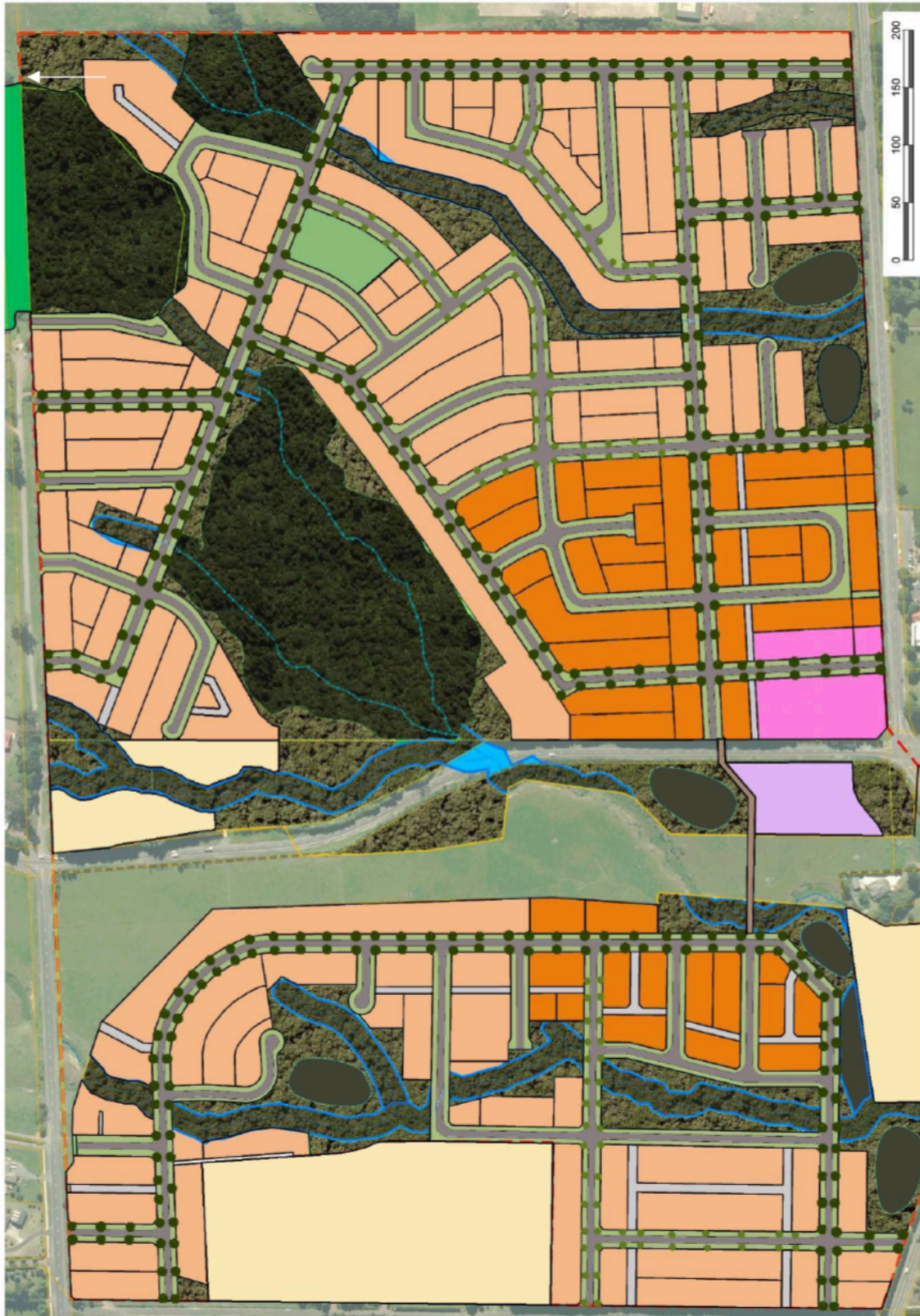
Alfriston Structure Plan, August 2023



Precinct Plan, August 2023, no scale



Concept plan, July 2023



Design test for Local Centre, no scale, December 2022



ALFRISTON VILLAGE CONCEPT NOTES:

- 1.) Stage 1 - Supermarket and retail on western side of N/S main street.
- 2.) Stage 2 - specialty retail on eastern side of N/S main street in 1 or several stages
- 3.) Supermarket 60m x 40m (2,400m²)
- 4.) Retail sleeve 12.5m x 48m (590m²)
- 5.) Café (south of sleeve) 12.5m x 12.5m (156m²)
- 6.) Eastern retail strip 15m x 125m (1,875m²)
- 7.) **Total retail extent 5,000m²**
- 8.) Supermarket car park available 0800 –0900 and 1430-1530 school pick up / drop off 10 mins.
- 9.) Left-turn exit Mill Rd gives PM access to centre and supermarket, and supermarket loading.
- 10.) On-street parking caters to customers for retail facing street.
- 11.) Provision for service access to eastern retail strip behind the stores.
- 12.) Concept has capability of pushing up to 30m further northwards (where left-turn exit from Mill Rd is positioned) if necessary for car parking and /or future supermarket expansion provision.