

He tirohanga



Te āwhina i te taiao me ngā tāngata kia puāwai Helping nature and people thrive

Te tūhura i tētahi pūnaha whakaetanga kanorau koiora
mō Aotearoa

He tirohanga o te kōrerorero tahi



Ministry for the
Environment
Manatū Mō Te Taiao



Department of
Conservation
Te Papa Atawhai

Kanorau koiora taketake

Kei te hiahia te taiao kia āwhinatia e tātau. Kei te noho mōrea ngā kararehe, ngā tipu me ngā nohoanga ahurei o Aotearoa i ngā raruraru huringa āhuarangi me te kanorau koiora. Nā te tangata i pēnei ai me ngā pēhanga taiao pērā i te whakamahinga kē o te whenua, ngā kīrearea kua whakaurua mai, ngā tarutaru me ngā tahumaero, te piki o te pāmahana me te nui haere o ngā tauraki me ngā waipuke.

Ahakoia he maha ngā rangatira o ngā whenua i whakapau kaha ki te tiaki me te whakaora i ā tātau kararehe ahurei, e noho mōrea ana aua momo, nohoanga anō hoki ki te korehāhā ki te kore e tautokona anō. Ki te pērā ka noho mōrea anō tō tātau ake oranga, nā ngā āhuratanga huhua e tiakina ai tātau e te taiao. E kore e taea e tātau te whirinaki ki ngā pūtea me te ngākaunui mai o ngā rangatira o ngā whenua – tae atu ki ngā whenua Māori – hei whakarite i ngā uauatanga e ara ake ana. Mā tātau katoa te raruraru kanorau koiora me whai aronga hou, me nui ake te tautoko.

Te tipu haere o te kaingākau ki te haumi ki te taiao

Kei te tipu haere te mōhio i te ao mō ngā uauatanga o te kanorau koiora me te āhuarangi me ōna pānga ki te taiao, ōhanga, pāpori hoki. Kei te nui haere te tiro tiro a ngā kairato ā-aroa, ngā pakihi, ngā kaihaumi me te hāpori whānui i Aotearoa me tāwāhi ki ngā tikanga hou, whaitake hoki ki te haumi ki ngā putanga pai mō te taiao.

Kei te ara haere mai ngā pūnaha whakaaetanga kanorau koiora (BSC) hei tino tikanga mō te whakamahi pūtea rāngai tūmataiti hei tautoko i ngā mahi a ngā rangatira o ngā whenua me te kāwanatanga me ngā kaunihera ki te tiaki, te tautiaki me te whakarei ake i te kanorau koiora. Ka tautoko te BSC i te Tauākī Kaupapahere ā-Motu mō Kanorau Koiora Taketake mā te whakamana i ngā rangatira o ngā whenua e tiaki ana, e whakaora ana i te taiao.

Tēnei kōrerorero tahi

Kei te rapu whakaaro mātau mō te tuhinga matapakinga hei āwhina ki te hoahoa me te tūnga e pīrangitia ana mō te mahi a te kāwanatanga i roto i tētahi pūnaha whakaaetanga kanorau koiora. Ka āwhina ō whakaaro i a mātau ki te waihanga i tētahi pūnaha whakaaetanga kanorau koiora whai pānga, pono me te hāngai ki te horopaki ahurei me ngā uauatanga kei runga i a Aotearoa.

Ngā pūnaha whakaaetanga kanorau koiora

E ōrite ana te whakamana ana a ngā whakaaetanga kanorau koiora i ngā kaupapa me ngā mahi e tiaki ana, e whakarei ana i te kanorau koiora taketake (arā, ko ngā momo, ngā nohoanga rānei), e taea ai ngā kerēme 'pai mō te taiao'. Mā te hoko whakaaetanga, ka taea e te tangata me ngā whakahaere te utu me te kerēme i te mana mō ngā mahi me ngā putanga e pā ana ki te tiaki me te whakarei ake i te taiao i ngā whenua tūmatanui me te tūmataiti, tae atu ki ngā whenua Māori.

Ka whakaatu pea te whakaaetanga kanorau koiora i tētahi putanga pai mō te kanorau koiora (ngā pūnaha ā-putanga), mō ngā kaupapa (ngā pūnaha ā-kaupapa), ngā mahinga hoki/rānei ka whai hua pea ki te kanorau koiora (ngā pūnaha ā-mahinga).

He aha te take mō te pūnaha whakaaetanga kanorau koiora?

Ka taea pea e ngā whakaaetanga kanorau koiora te āwhina:

- ▶ ki te whakarite i te raruraru kanorau koiora o Aotearoa
- ▶ ki te whakarite i te ohotata āhuarangi
- ▶ ki te tautoko kia toitū ngā mahi pāmu, paina me te tāpoi.

Ka taea e tētahi pūnaha whakaaetanga kanorau koiora te whakaaraara haumitanga hei tautoko i ngā rangatira o ngā whenua ki te tiaki, te tautiaki me te whakaora i te kanorau koiora taketake i roto me waho o ngā wāhi hira tūturu, ā, whānui atu hoki. Ka pai tētahi pūnaha pērā mō te rapu pūtea hei tautoko i te Māori ki te tiaki i te kanorau koiora kei ngā whenua Māori, nā te nui o te kanorau koiora taketake kei runga tonu i aua whenua.

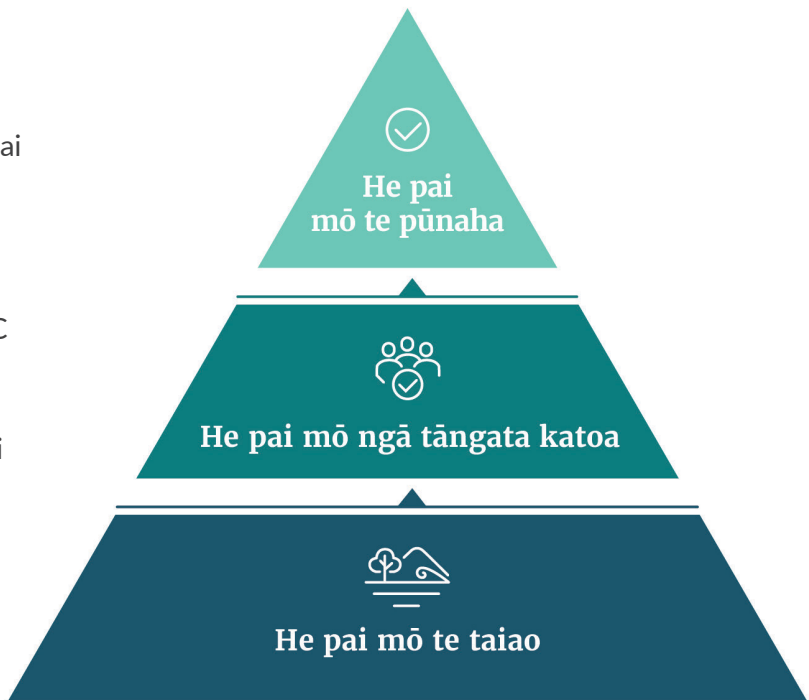
Me ngākau titikaha ngā kaihoko pea he pono ngā whakaaetanga kanorau koiora, ā, mā te haumi ka tino tiaki me te whakaora i ngā momo me ngā nohoanga kei te mōrea.



Ngā mātāpono o te hoahoa me te whakatinana i tētahi pūnaha whakaaetanga kanorau koiora

Me mātua whai whakaaro te kāwanatanga me pēhea e tino hāngai ai tētahi pūnaha whakaaetanga kanorau koiora ki ngā āhuetanga ahurei o Aotearoa.

Kia taea ai tēnei, me tautoko te BSC i te ao Māori me te mātauranga Māori me te whakamana i Te Tiriti o Waitangi. Me whai whakaaro hoki tātau he aha atu anō ngā mātāpono hei whakatakoto i te tūāpapa mō tētahi BSC whaikiko, nui te pono i Aotearoa.



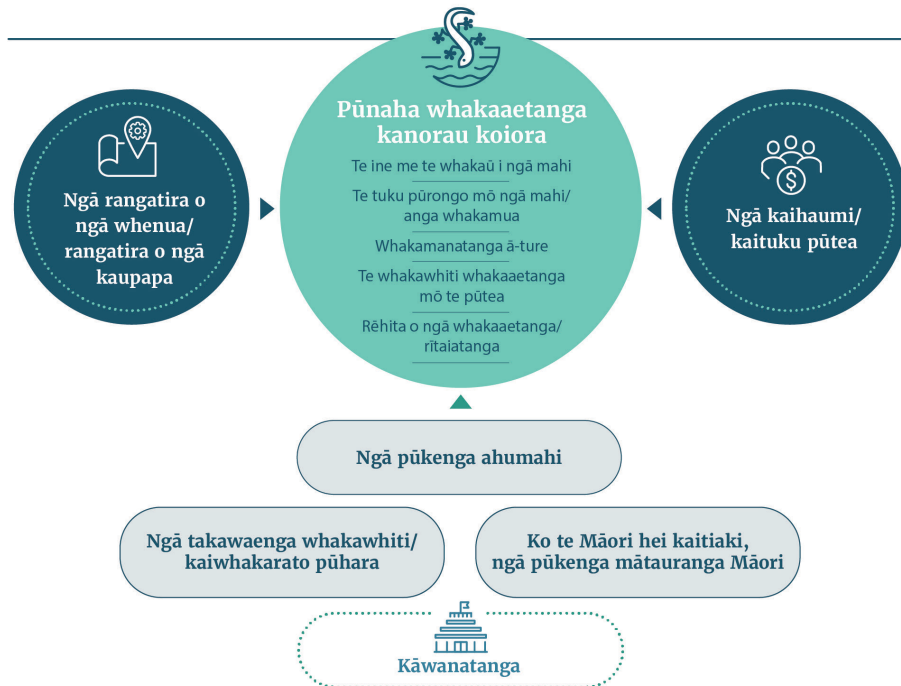
Ngā mātāpono taketake ka taea o tētahi pūnaha whakaaetanga kanorau koiora

Mātāpono ka taea
He pānga pūmau pai (neke atu i te 100 tau), wā roa rānei (25 tau)
Ngā kerēme pūrangiaho, ka taea te whakatūturu
He pakari, me ngā whakaritenga kia kore ai e rawekehia te pūnaha me te whakarite i te hēnga o ngā putanga
He hua ka puta i ngā mahi pai mō te taiao i tua atu i aua mahi noa
He tautoko i ngā mahi ā-motu, ā-ao mō te kanorau koiora
He mārama ngā ture mō ngā kerēme ka puta i ngā kaihaumi mō te whai pānga o ā rātau mahi, mā ngā tikanga kia kore ai e 'rūkahu i ngā pai mō te taiao'
Te whakawhānui ake i ngā pānga pai ki te kanorau koiora (tae atu ki te hiki i te haumaruru me te mana o te kanorau koiora)

Ngā wāhanga o tētahi pūnaha whakaaetanga kanorau koiora

He maha ngā wāhanga o tētahi pūnaha whakaaetanga kanorau koiora. Me whakaatu ngā whakaaetanga kanorau koiora pono, whaikiko i te pānga mā ngā aronga pakari, utu ngāwari hei aroturuki, whakatūturu me te tuku pūrongo.

Kanorau koiora pai ake



He aha te wāhanga o te kāwanatanga

Kia pono ai ki tētahi māketē kia tipu, kia whaitake ai te mahi, me whirinaki te hunga kei roto ki te pono me te pānga o te pūnaha.

Ka taea e te kāwanatanga te tautoko te pūnaha whakaaetanga kanorau koiora mā te:

- ▶ Te whakamana a te māketē – e whai ana te kāwanatanga ki te whakaawe i ngā putanga me te whakahaere i te māketē, mā ngā utauta kore-waeture (pērā i ngā aratohu tikanga mahi pai mō te waihanga me te whai i ngā kaupapa tūao), me te waihanga pea i te pūnaha tuku pūtea i te wā e whakatūria ana te māketē.
- ▶ Te whakahaere i te māketē – ina whakatūria e te kāwanatanga he anga waeture, mā ngā utauta hei ārahi i ngā putanga me te whakahaere i te māketē.

Ka tika pea tētahi tōpūtanga o ēnei kōwhiringa, me ngā utauta kore-waeture, waeture hoki ka whakamahia mō ngā wāhanga rerekē o tētahi BCS. Ka rea haere pea te aronga i roto i te wā i te ū haere o te wheako ki te māketē. Ka whakamōhiotia anōtia pea ngā kōwhiringa waeture e ngā anga ā-ao. He mea tino hira tēnei mēnā ka tauhokohokotia ngā whakaaetanga i te ao, ka hokona rānei e ngā kamupene nunui o te ao, arā, i roto i te horopaki o Aotearoa-Ahitereiria.

Me whaikiko tō reo

Whakauru mai ki te kōrero ka whakaputa i whakaaro:

 [@environmentgovtnz](https://www.instagram.com/environmentgovtnz)

 [@environmentgovtnz](https://twitter.com/environmentgovtnz)

 [facebook.com/environmentgovtnz](https://www.facebook.com/environmentgovtnz)

 [linkedin.com/company/environmentgovtnz](https://www.linkedin.com/company/environmentgovtnz)

Me āwhina ki te waihanga i tētahi pūnaha whakaaetanga kanorau koiora

Mō ngā taipitopito whānui mō ngā kaupapa e marohitia ana, ngā raruraru e whakamātauhia ana e mātau, me ngā kōwhiringa ka taea e whiriwhiria ana, me pānui i te [tuhinga matapakinga](#) whānui.

Ka taea e koe te tuku tāpaetanga kōrero mā [Citizen Space](#), tā mātau pokapū kōrerorero tahi, mā te whai i tētahi puka tuku whakaaro, mā te tukuatu rānei i tāu ake tāpaetanga kōrero.

Ko te mea pai ki a mātau kia kua e īmēra mai, e pōhitia rānei tō tāpaetanga kōrero ki a mātau i te mea ka uaua ake ā mātau mahi tātari. Engari, mēnā e hiahiatia ana, me mēra atu tō tāpaetanga kōrero ki Water and Land Use Policy, Te Manatū mō te Taiao, PO Box 10362, Wellington 6143.

Mēnā kei īmēra atu koe i tō tāpaetanga kōrero, me tuku ki biocredits@mfe.govt.nz.

Ka kati ngā tāpaetanga kōrero hei te 11:59pm o te Rāmere 3 Whiringa-ā-rangi 2023.

Ka aha ā muri ake

Ka whiriwhiria e te Kāwanatanga ngā tāpaetanga kōrero hei āwhina me te hoahoa i ngā kōwhiringa me te wāhanga pai ake mā te Kāwanatanga i roto i tētahi pūnaha whakaaetanga kanorau koiora, i te taha o te hunga whai pānga hira.

