

JOBS | MAHI
FOR NATURE | MŌ TE TAIAO



Pomahaka Corridor Project Profile



Purpose of this review:

**To highlight the positive social,
environmental, and community benefits
resulting from the Pomahaka Corridor
Planting Project.**





Pomahaka Corridor Planting Project

The Pomahaka Corridor Planting Project aims to improve water quality, enhance biodiversity and support the local economy by planting native riverbank species and installing riparian fencing on farms throughout the Otago district. The project received \$3.7 million over three years to create employment opportunities and deliver environmental outcomes.¹

Region	Otago
Recipient	Pomahaka Water Care Group Incorporated
Start date	10/09/2020
End date	30/09/2022
Approved funding	\$3.7m
Intent	Freshwater restoration
Funder	Kānoa Regional Economic Development and Investment Unit, MBIE, Te Uru Rākau

Why is the project important for the region?

During the COVID-19 pandemic, Otago was expected to face significant economic challenges. General projections included significant impacts on tourism numbers, with domestic tourism expected to help in the interim. Disruptions to meat and log exports were also anticipated.²

The Pomahaka Corridor Planting Project created immediate job opportunities for the local community, particularly for those displaced from careers in hospitality and tourism, helping to alleviate the economic impacts of the COVID-19 lock-downs.³

What difference is the project making to people?

Employment opportunities. The project has generated job opportunities for local communities, employing 39 full-time staff at its peak, particularly for those who were displaced from their previous careers in hospitality and tourism as a result of the impacts from COVID-19 pandemic.

- Seven employees were previously unemployed
- Six employees were ex tourism / hospitality industry
- Ten apprenticeships
- Eight fencing contractors
- 42 NZQA qualifications completed.



Increased community participation

The project has generated a sense of community and shared responsibility for the environment including bringing together more than 70 stakeholders, including local farmers to celebrate the milestone of planting nearly 100,000 riparian plants.

Improved education and collaboration

The Pomahaka Water Care Group promotes “farmers educating farmers” and serves as a model for other regions in Aotearoa, encouraging sustainable agricultural practices and environmental stewardship. The improvements made by this project have been across at least 119 farms. This kind of education leads to better land management, improved water quality, and long-term improvements for the region’s agricultural sector.

How is the project contributing to the wellbeing of Māori?

The Pomahaka Corridor Planting Project promotes the importance of kaitiakitanga (guardianship) and sustainable land management by engaging local farmers and stakeholders in the process of improving water quality and biodiversity in the Pomahaka catchment area. This helps strengthen the connection between Māori and the land.⁵

Impacts on the environment

Improved water quality

With 107,961 meters of fencing and 243,868 plants planted across 320 sites, the project helps prevent land erosion, protect stream habitats, and filter pollutants before they enter waterways. This can lead to cost savings by reducing the need for costly water treatment and remediation measures. The contribution to improvements in water quality can have a positive impact on the local regional economy, including for agriculture and tourism.

Improved biodiversity

The planting of 243,868 plants supports the region's unique flora and fauna, leading to a healthier ecosystem. A more diverse ecosystem can provide various ecosystem services, such as pollination and pest control, which can benefit the agricultural sector.

Erosion control and protection of indigenous species. Riparian planting stabilises riverbanks, providing shade, cooling water, and enhancing oxygenation. This helps prevent soil erosion and increases protection for habitats for wildlife. By preventing land erosion, this reduces land degradation costs including loss of productivity in the agricultural sector.



Riparian Planting Project 2020-2023



243,868 plants
PGF 122,379/108,333
1BT 121,489/120,000



320 planting sites
PGF 200 1BT 120



119 farms
PGF 65
1BT 54

107,961m fencing
(ALL PGF 100,000m)



30,000 posts
42,700m netting
354,300m wire



39 FTE

PGF 23/13 1BT 16/13

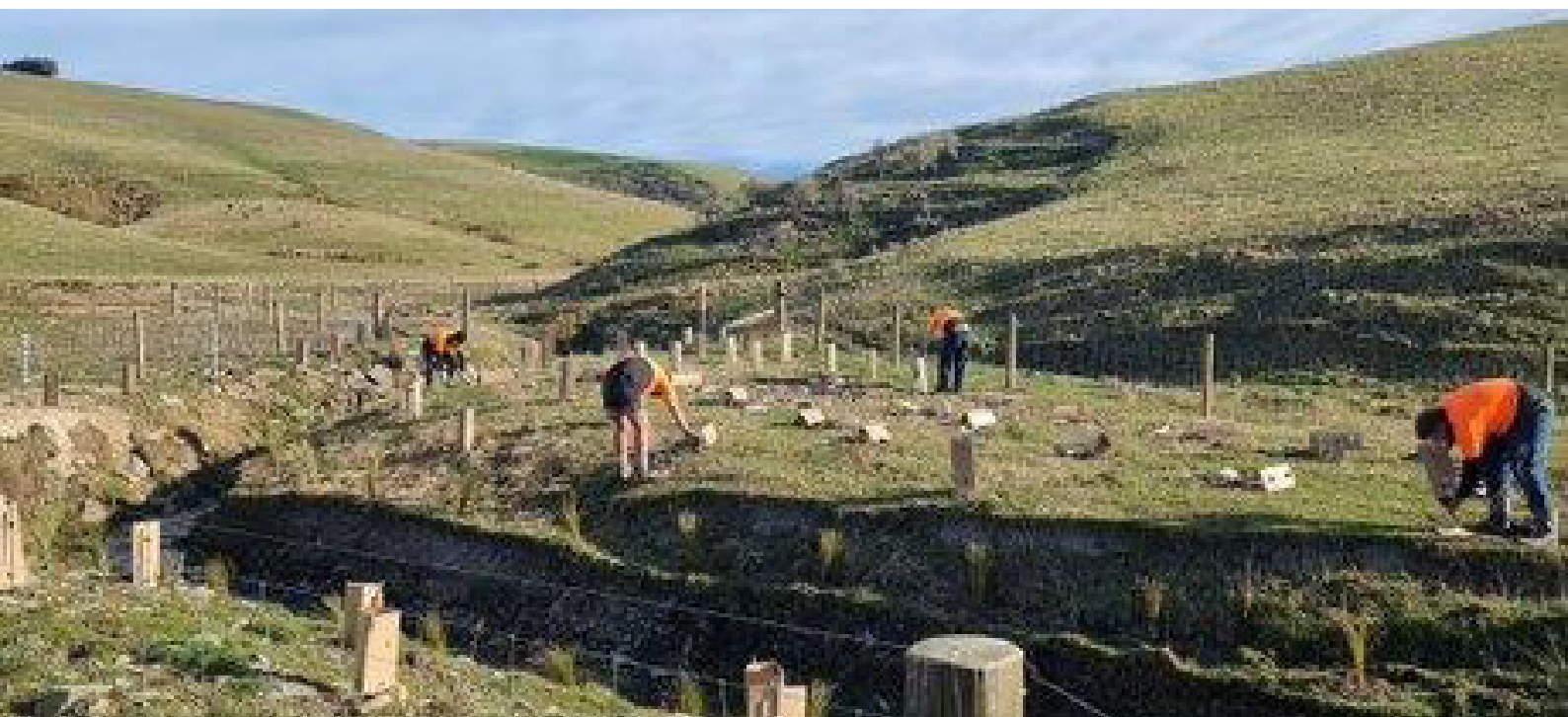
42 NZQA qualifications

8 fencing contractors

10 apprenticeships



Riparian planting project metrics 2020-2023



References

- ¹ Otago Daily Times. (2023, August 13). Pomahaka planting given \$3.7m boost. <https://www.odt.co.nz/regions/pomahaka-planting-given-37m-boost>
- ² Ministry of Business, Innovation and Employment. (2020, December). MBIE Briefing to Incoming Minister for Economic and Regional Development <https://www.beehive.govt.nz/sites/default/files/2020-12/Regional%20Economic%20Development.pdf>
- ³ Otago Business School. (2020, June 30). Rebuilding Aotearoa New Zealand. University of Otago. <https://www.otago.ac.nz/business/otago739594.pdf>
- ⁴ NZ Herald. (2021, October 13). Otago farmers' Pomahaka Corridor Planting Project celebrated. NZ Herald. <https://www.nzherald.co.nz/the-country/news/otago-farmers-pomahaka-corridor-planting-project-celebrated/JKQJ6RDCMVEF2NXJPHU6F3CXAQ/>
- ⁵ Otago Regional Council. (2016). Pomahaka River Morphology and Riparian Management Strategy. ORC.govt.nz. <https://www.orc.govt.nz/media/3827/pomahaka-river-morphology-and-riparian-management-strategy-2016.pdf>
- ⁶ Waka Kotahi NZ Transport Agency. Landscaping and planting. NZTA.govt.nz. <https://www.nzta.govt.nz/projects/wellington-northern-corridor/transmission-gully-motorway/building-tg/protecting-our-environment/landscaping-and-planting/>
- ⁷ NZ Herald. (2022, September 13). Pomahaka Water Care Group's riparian planting project reaches end of first phase. NZ Herald. <https://www.nzherald.co.nz/the-country/news/pomahaka-water-care-groups-riparian-planting-project-reaches-end-of-first-phase/ABJGGMUJRF2AWLVQEV5KMHAYE/>



JOBS | **MAHI**
FOR NATURE | MŌ TE TAIAO

