



Report prepared in accordance with Section 17 Covid-19 (Fast-track Consenting) Act 2020

Application 2023-142 Metlifecare Whenuapai Project

To:	Required action:
Hon David Parker, Minister for the Environment	Consider this report prior to making a decision under section 24 of the FTCA
Willow-Jean Prime, Minister of Conservation	
Date submitted: 29 May 2023	

Ministry for the Environment contacts

Position	Name	Cell Phone	1 st Contact
Principal Author	Stephanie McNicholl		
Acting Manager	Rebecca Perrett	s 9(2)(a)	✓
Acting Director	Lorena Stephen	s 9(2)(a)	

Introduction

1. The Ministry for the Environment has prepared this report in consultation with the Office for Māori Crown Relations – Te Arawhiti and in accordance with section 17 of the Covid-19 Recovery (Fast-track Consenting) Act 2020 (the FTCA).
2. To satisfy obligations under section 6 of the FTCA, you must both consider this report before you jointly make any decision under section 24 of the FTCA regarding the application request to refer the Metlifecare Whenuapai Project (project) to an expert consenting panel (panel).

Proposed project

3. The applicant (Metlifecare Limited) proposes to develop an approximately 8.96 hectare site into a retirement village development located at 99 Totara Road, Whenuapai, Auckland region.
4. The project will include approximately 185 residential units (comprising 135 independent-living residential units and 50 care units), amenity facilities in one building up to three storeys in height and outdoor recreation area. The project will include connections to public roading and three-waters infrastructure, landscaping and planting. The project will include works in Totara Road reserve.
5. The project site lies adjacent to the Waitematā Harbour and part of the project, discharge of stormwater, will occur in the coastal marine area (CMA).
6. A location map is in Attachment 1.

Essential information

7. The following information is required under section 17(3) of the FTCA for the project area.

FTCA Section	Information required	Detail	
17(3)(a)	Relevant iwi authorities	10	Refer Iwi authorities section below. <i>Contact details are in Attachment 2</i>
17(3)(b)	Treaty settlements that relate to the project area	8	
17(3)(a)	Relevant Treaty settlement entities	11	
17(3)(c)	Relevant principles and provisions of the Treaty settlements	Details in blue-shaded section below	
17(3)(d)	Groups with a negotiation mandate recognised by the Crown which are yet to commence Treaty settlement negotiations	Ngāti Te Ata (Ngāti Te Ata Claims Support Whānau Trust) Ngāti Koheriki (Ngāti Koheriki Claims Committee)	
17(3)(d)	Current Treaty settlement negotiations	Ngāti Maru (Hauraki) (Ngāti Maru Treaty Settlement Negotiators) Ngāti Tamatera (Ngāti Tamatera Negotiators) Ngāti Whatua (Te Rūnanga o Ngāti Whātua) Marutūāhu Iwi Collective	
17(3)(e)	Court orders recognising customary marine title or protected customary rights under the Marine and Coastal Area (Takutai Moana) Act 2011 or another Act	–	

Supporting information

Project details

8. The project site covers approximately 8.96 hectares of characteristically semi-rural land. The site has frontage to and will gain access from Totara Road to the east.
9. The project involves activities such as demolishing buildings, carrying out earthworks (including disturbing contaminated soils), vegetation clearance within 10m of a natural wetland, diverting and placing structures within or over overland flow paths, discharging stormwater into the CMA, constructing or installing infrastructure including roads, vehicle and pedestrian accessways, and infrastructure for three-waters services, landscaping and restoring wetland.
10. The project layout is in Attachment 3.

Statutory matters relating to this report

11. Parts of the proposed project will occur in the coastal marine area (CMA), meaning: in accordance with section 16(1) of the FTCA, decisions relating to referral of the project to a panel must be made jointly by the Minister for the Environment and the Minister of Conservation.
12. Section 17(1) of the FTCA requires you both to consider this report before making a joint decision under section 24 of the Act to refer the project to a panel, in order to satisfy your joint obligations under section 6 (Treaty of Waitangi) of the FTCA.
13. Section 17(3)(e) of the FTCA requires this report to identify any court orders granted under the Marine and Coastal Area (Takutai Moana) Act 2011 (MACAA) or another Act which recognise, in relation to the project area, customary marine title or protected customary rights. We note there are no such court orders relevant to the project area to consider in your joint referral decision.

Iwi authorities

Methodology and information sources

14. This report must identify the relevant iwi authorities for the project, in accordance with section 17(3)(a) of the FTCA. Under section 7(1) of the FTCA, a relevant iwi authority for a referred project means an iwi authority whose area of interest includes the area in which a project will occur.
15. 'Area of interest' can mean different things depending on context and perspective and can be indicative (such as an area identified at the outset of Treaty settlement negotiations), formally agreed (such as in a deed of settlement or memorandum of understanding) or self-nominated. An area of interest can be difficult to define precisely on a map, particularly where a boundary that has been depicted on a small-scale map is scaled up and used precisely in relation to an individual site or property.
16. For the purpose of this report, we have considered information from the following sources as a starting point for identifying iwi areas of interest:
 - a. Te Arawhiti Internal Crown Asset Tracking Tool (i-Cat), an online database that records areas of interest associated with Treaty settlements and Treaty settlement negotiations
 - b. area of interest maps in signed Treaty settlement deeds or other Treaty settlement negotiation documents (including deeds of mandate)
 - c. Auckland Council's online interactive map depicting tribal regions and iwi in the Auckland Region¹
 - d. the Iwi Areas of Interest viewer, an online application managed by the Ministry of Māori Development – Te Puni Kōkiri (TPK)
 - e. Te Kāhui Māngai (TKM), an online directory of iwi and Māori organisations maintained by TPK, which includes information on rohe (tribal areas) provided by those organisations.
17. Generally, the areas of interest shown on these databases for an iwi or group do not always completely align, and sometimes the differences can be significant. We carefully consider the reasons for such discrepancies, including the reliability or

¹ Accessed via the webpage for the Auckland Plan 2025 (the long-term spatial plan for Tāmaki Makaurau): <https://www.aucklandcouncil.govt.nz/plans-projects-policies-reports-bylaws/our-plans-strategies/auckland-plan/about-the-auckland-plan/Pages/iwi-tamaki-makaurau.aspx>

accuracy of the information shown and the local context and decision-making environment, before deciding which areas of interest we consider apply to a project under FTCA process.

18. The FTCA does not specifically define iwi authority but pursuant to section 7(2) of the FTCA, 'iwi authority' has the same meaning as in the Resource Management Act 1991 (RMA): the authority which represents an iwi and which is recognised by that iwi as having authority to do so.
19. To identify iwi authorities associated with the identified areas of interest, we considered information from:
 - a. the sources noted above including the TKM online directory
 - b. Auckland Council's online tool: [Find mana whenua contacts](#) for a particular address
 - c. Auckland Council² as the sole relevant local authority.

Iwi authorities relevant to project

20. We consider the project site lies within the areas of interest of Ngāti Whātua Ōrakei, Ngāti Whātua o Kaipara, Te Kawerau ā Maki, Ngāi Tai ki Tāmaki, Ngāti Tamaoho, Te Ākitai Waiohua, Ngāti Maru (Hauraki), Ngāti Tamaterā, Ngāti Te Ata, Ngāti Whātua, Tamaki Collective and Marutūāhu Iwi Collective.
21. Not all of these iwi or groups are represented by an iwi authority and some are represented by more than one iwi authority.
22. We have identified, via the TPK viewer, the TKM website and Auckland Council's databases, the relevant iwi authorities for the project area, as:
 - a. Ngāti Whātua Ōrakei Trust Board, representing Ngāti Whātua Ōrakei iwi
 - b. Ngā Maunga Whakahii o Kaipara Development Trust, representing Ngāti Whātua o Kaipara iwi
 - c. Te Kawerau Iwi Settlement Trust, representing Te Kawerau ā Maki iwi
 - d. Ngāi Tai ki Tāmaki Trust, representing Ngāi Tai ki Tāmaki iwi
 - e. Ngāti Tamaoho Trust, representing Ngāti Tamaoho iwi
 - f. Te Ākitai Waiohua Iwi Authority, representing Te Ākitai Waiohua iwi
 - g. Ngāti Maru Rūnanga Trust, representing Ngāti Maru (Hauraki) iwi
 - h. Ngāti Tamaterā Treaty Settlement Trust, representing Ngāti Tamaterā iwi
 - i. Te Ara Rangatū o Te Iwi o Ngāti Te Ata Waiohua, representing Ngāti Te Ata iwi
 - j. Te Rūnanga o Ngāti Whātua, representing Ngāti Whātua iwi
23. We note in their invited comments, Auckland Council identified seven of the same relevant iwi authorities. We have addressed Ngāti Manuhiri and Ngāti Pāoa below.

Other iwi authorities, treaty settlement entities and parties which may have an interest in the project

24. We note Auckland Council's invited comments and databases indicate the project site lies in the interest area for Ngāti Manuhiri and Ngāti Pāoa, however this is not supported by any other available information. We recommend including the relevant representative bodies for each as 'other' parties which may have an interest.

² Auckland Council is a Unitary local authority with regional and local government responsibilities.

25. We note the project site lies in the Ngāti Koheriki area of interest and the iwi is not currently represented by an iwi authority or a Treaty settlement entity recognised under the FTCA – meaning it is not covered by notification requirements prescribed by the FTCA. We recommend including the Ngāti Koheriki Claims Committee as an ‘other’ party which may have an interest.

Treaty settlements and Treaty settlement entities

26. This report must identify the Treaty settlements that relate to the project area and relevant Treaty settlement entities, in accordance with sections 17(3)(b) and 17(3)(a) respectively. We use information relevant to the project area from the iCat online database and [NZ Government Treaty settlements website](#), together with advice from the Office for Māori Crown Relations – Te Arawhiti.
27. Under the FTCA, a Treaty settlement includes both a Treaty settlement Act and a Treaty settlement deed which is signed by both the Crown and the representative Māori group.
28. The project site falls within the area of interest covered by Treaty settlements with the following iwi:
- Ngāti Whātua Ōrakei – settlement act
 - Ngāti Whātua o Kaipara – settlement act
 - Te Kawerau ā Maki – settlement act
 - Ngāti Tamaoho – settlement act
 - Ngāi Tai ki Tāmaki – settlement act
 - Te Ākitai Waiohū – deed of settlement
 - Tamaki Collective – redress act
 - Marutūāhu Iwi Collective – redress deed.
29. [Ngāti Whātua Ōrakei Claims Settlement Act 2012](#) gives effect to certain provisions of the deed of settlement signed by Ngāti Whātua o Ōrakei, Ngāti Whātua Ōrakei Trustee Limited and the Crown on 5 November 2011. [Ngāti Whātua o Ōrakei deed of settlement documents](#) are accessible on the NZ Government Treaty settlements website.
30. [Ngāti Whātua o Kaipara Claims Settlement Act 2013](#) gives effect to certain provisions of the deed of settlement signed by Ngāti Whātua o Kaipara and the Crown on 9 September 2011. [Ngāti Whātua o Kaipara deed of settlement documents](#) are accessible on the NZ Government Treaty settlements website.
31. [Te Kawerau ā Maki Claims Settlement Act 2015](#) gives effect to certain provisions of the deed of settlement signed on 22 February 2014 and amendment deeds signed in August 2015 and October 2019. [Te Kawerau ā Maki deed of settlement documents](#) are accessible on the NZ Government Treaty settlements website.
32. [Ngāti Tamaoho Claims Settlement Act 2018](#) gives effect to certain provisions of the deed signed by Ngāti Tamaoho and the Crown on 30 April 2017. [Ngāti Tamaoho deed of settlement documents](#) are accessible on the NZ Government Treaty settlements website.
33. [Ngāi Tai ki Tāmaki Claims Settlement Act 2018](#) gives effect to certain provisions of the deed of settlement signed by Ngāi Tai ki Tāmaki, Ngāi Tai ki Tāmaki Trust and the Crown on 7 November 2015, and amendments signed in 2016, 2017 and 2018. [Ngāi](#)

[Tai ki Tāmaki deed of settlement documents](#) are accessible on the NZ Government Treaty settlements website.

34. Te Ākitai Waiohua, Te Ākitai Waiohua Iwi Settlement Trust and the Crown signed a deed of settlement on 12 November 2021. Legislation has yet to be enacted. [Te Ākitai Waiohua deed of settlement documents](#) are accessible on the NZ Government Treaty settlements website.
35. Ngā Mana Whenua o Tāmaki Makaurau (the Tāmaki Collective) and the Crown signed the Tāmaki Makaurau Collective Redress deed on 5 December 2012 and an amendment deed on 23 August 2013. The [Ngā Mana Whenua o Tāmaki Makaurau Collective Redress Act 2014](#) gives effect to certain provisions of the deeds. The FTCA defines this Act, as a Treaty settlement Act, for the purposes of the FTCA. [Tāmaki Makaurau Collective Redress deed documents](#) are accessible on the NZ Government Treaty settlements website.
36. Marutūāhu Iwi Collective and the Crown signed the Marutūāhu Collective Redress deed on 28 July 2018. Legislation has yet to be enacted. [Marutūāhu Collective Redress deed documents](#) are accessible on the NZ Government Treaty settlements website.

Relevant Treaty settlement entities

Post-settlement governance entities

37. Under the FTCA, a Treaty settlement entity includes a post-settlement governance entity, defined as a body corporate or trustees of a trust established by a claimant group for receiving redress, or for participating in arrangements established under a Treaty settlement Act.
38. We have identified the following post-settlement governance entities associated with the Treaty settlements:
 - a. Ngāti Whātua Ōrākei Trustee Limited (in its capacity as trustee of the Ngāti Whātua Ōrākei Trust) under the [Ngāti Whātua Ōrākei Claims Settlement Act 2012](#)
 - b. Ngā Maunga Whakahii o Kaipara Development Trust under the [Ngāti Whātua o Kaipara Claims Settlement Act 2013](#)
 - c. Te Kawerau Iwi Settlement Trust under the [Te Kawerau ā Maki Claims Settlement Act 2015](#)
 - d. Ngāti Tamaoho Settlement Trust under the [Ngāti Tamaoho Claims Settlement Act 2018](#)
 - e. Ngāi Tai ki Tāmaki Trust under the [Ngāi Tai ki Tāmaki Claims Settlement Act 2018](#).
39. A post-settlement governance entity may exist ahead of finalisation of a deed of settlement and/or enactment of Treaty settlement legislation.
40. We have identified the following post-settlement governance entities in this category are also relevant:
 - a. Te Ākitai Waiohua Settlement Trust was ratified as the post-settlement governance entity for the Te Ākitai Waiohua Treaty settlement in June 2014. Te Ākitai Waiohua and the Crown signed a deed of settlement on 12 November 2021
 - b. Ngāti Maru Rūnanga Trust was ratified as the post-settlement governance entity for the Ngāti Maru (Hauraki) Treaty settlement in August 2012. Ngāti Maru (Hauraki) and the Crown initialled a deed of settlement on 8 September 2017

- c. Ngāti Tamaterā Treaty Settlement Trust was ratified as the post-settlement governance entity for the Ngāti Tamaterā Treaty settlement in August 2012. Ngāti Tamaterā and the Crown initialled a deed of settlement on 20 September 2017.
41. We note the Marutūāhu Iwi Collective (which comprises Ngāti Paoa, Ngāti Maru (Hauraki), Ngāti Tamaterā, Ngaati Whanaunga and Te Patukirikiri) and the Crown initialled a Collective Redress Deed on 27 July 2018. The Marutūāhu Iwi Collective area of interest³ covers parts of the Auckland, Waikato and Bay of Plenty regions including the project site.
42. The Marutūāhu Rōpū General Partner Limited was established to receive the collective commercial redress provided in the Marutūāhu Iwi Collective Redress Deed, and therefore meets the definition of a post-settlement governance entity under the FTCA. The Marutūāhu Iwi Collective Redress Deed also provides for establishment of Taonga o Marutūāhu Trustee Limited to receive the Marutūāhu Iwi collective cultural redress. This redress entity would also qualify as a post-settlement governance entity under the FTCA however it is yet to be established.
43. The cultural and commercial redress provided under the Marutūāhu Iwi Collective Redress Deed forms part of the individual settlements with each of the 5 iwi of the Collective. None of this redress, to be managed by the two redress entities identified (once the redress deed is signed and given effect through legislation), is affected by the project. We have identified these redress entities as relevant Treaty settlement entities for the project.

Other bodies recognised or established under a Treaty settlement Act

44. A Treaty settlement entity is also defined for the purposes of the FTCA as including a board, trust, committee, authority, or other body, recognised in or established under a Treaty settlement Act.
45. No such entity established by the Claims Settlement Act noted above is relevant to the proposed project.

Relevant principles and provisions of the Treaty settlements for:

Ngāti Whātua Ōrākei, Ngāti Whātua o Kaipara, Te Kawerau ā Maki, Ngāi Tai ki Tāmaki, Ngāti Tamaoho and Te Ākitai Waiohū

Crown acknowledgements and apologies

46. As part of all of the identified Treaty settlements, the Crown offers acknowledgements and an apology as part of Treaty settlement redress to atone for historical wrongs, restore honour, and begin the process of healing.

Relevant principles and provisions of the Ngāti Whātua Ōrākei Treaty settlement

47. As part of the apology offered by the Crown to Ngāti Whātua Ōrākei, to their ancestors, and to their descendants in the Ngāti Whātua Ōrākei Claims Settlement Act 2012, the Crown recognises that from 1840, Ngāti Whātua Ōrākei sought a close and positive relationship with the Crown and, through land transactions and other means, provided lands for European settlement.
48. The Crown profoundly regrets and is deeply sorry for its actions which left Ngāti Whātua Ōrākei virtually landless by 1855, which had devastating consequences for the

³ The area of interest is shown on the map attached to the [Marutūāhu Collective Redress deed summary](#).

social, economic and spiritual well-being of Ngāti Whātua Ōrākei that continue to be felt today.

49. The Crown unreservedly apologises for not having honoured its obligations to Ngāti Whātua Ōrākei under the [Treaty of Waitangi](#). By this settlement, the Crown seeks to atone for its wrongs, so far as that is now possible, and begin the process of healing. The Crown looks forward to repairing its relationship with Ngāti Whātua Ōrākei based on mutual trust, co-operation and respect for the Treaty of Waitangi and its principles.

Relevant principles and provisions of the Ngāti Whātua o Kaipara Treaty settlement

50. The Crown recognises that, from the signing of the [Treaty of Waitangi](#), Ngāti Whātua o Kaipara committed themselves to a close and positive relationship with the Crown and, through sales and other means, provided lands for European settlement.
51. The Crown deeply regrets that the benefits Ngāti Whātua o Kaipara were led to expect from the relationship, including benefits from the sale of land, were slow to arrive or were not always realised.
52. The Crown profoundly regrets and unreservedly apologises for its actions, which have resulted in the virtual landlessness of Ngāti Whātua o Kaipara. This state of landlessness has had devastating consequences for the social, cultural, economic, spiritual and physical well-being of Ngāti Whātua o Kaipara that continue to be felt today.
53. With this apology and settlement the Crown intends to improve and strengthen its historically close relationship with Ngāti Whātua o Kaipara based on the Treaty of Waitangi and its principles so as to create a solid foundation for the future.

Relevant principles and provisions of the Te Kawerau ā Maki Treaty settlement

54. The Crown recognises the grievances of Te Kawerau ā Maki are long-held and acutely felt. For too long the Crown has failed to appropriately respond to claims for redress and justice. The Crown apology is to Te Kawerau ā Maki, their ancestors and descendants.
55. The Crown profoundly regrets its breaches of the [Treaty of Waitangi](#) and its principles, which alienated much Te Kawerau ā Maki land by 1856. The Crown is deeply sorry for its failure to protect land reserved for Te Kawerau ā Maki. The loss of the land and other traditional lands has had devastating consequences for the spiritual, cultural, social, economic, and physical well-being of Te Kawerau ā Maki, that continue to be felt today.
56. The Crown unreservedly apologises for not having honoured its obligations to Te Kawerau ā Maki under the Treaty of Waitangi. Through this apology and this settlement the Crown seeks to atone for its wrongs and lift the burden of grievance so that the process of healing can begin. By the same means the Crown hopes to form a new relationship with the people of Te Kawerau ā Maki based on mutual trust, co-operation, and respect for the Treaty of Waitangi and its principles.

Relevant principles and provisions of the Ngāi Tai ki Tāmaki Treaty settlement

57. The Crown apologises to Ngāi Tai ki Tāmaki, to their tūpuna, and to their mokopuna.
58. Ngāi Tai ki Tāmaki sought to establish mutually beneficial relationships with European settlers and the Crown by welcoming them into their rohe and offering land, but the

Crown did not honour this gesture. The Crown's acts and omissions undermined relationships that should have been based on good will and mutual benefit. The Crown broke its promise to protect your interests, confiscated your whenua, and promoted policies which had devastating economic, social, and cultural consequences for Ngāi Tai ki Tāmaki.

59. For its breaches of Te Tiriti o Waitangi/the [Treaty of Waitangi](#) and its principles and for the prejudice its acts and omissions have caused Ngāi Tai ki Tāmaki, the Crown unreservedly apologises. The Crown hopes this settlement will lead to a new relationship that fulfils the expectations of your tūpuna and mokopuna, a relationship marked by cooperation, partnership, and respect for Te Tiriti o Waitangi/the Treaty of Waitangi and its principles.

Relevant principles and provisions of the Ngāti Tamaoho Treaty settlement

60. The Crown apologises to the iwi of Ngāti Tamaoho, to their tūpuna and to their mokopuna.
61. The Crown apologises for its failure to honour its obligations under te Tiriti o Waitangi/the [Treaty of Waitangi](#) and recognises that this failure has harmed successive generations of Ngāti Tamaoho, who have endured adversity and been treated as strangers within their own rohe. The Crown is deeply sorry for failing to appropriately respond in a timely and meaningful way to long-standing and acutely felt grievances.
62. The Crown sincerely regrets unfairly labelling Ngāti Tamaoho as rebels and confiscating much of their remaining land. The Crown unreservedly apologises for the hurt and ongoing grievance caused by the burning and looting of Pokeno. The Crown attacked the settlement prior to its invasion of Waikato despite Ngāti Tamaoho never having been in rebellion and for this it is truly sorry.
63. The Crown is deeply sorry for the loss of life and injuries Ngāti Tamaoho suffered during the New Zealand Wars of the 1860s, and the resulting destruction of property and disruption of social life. The Crown's acts and omissions and its promotion of injurious laws and policies have harmed Ngāti Tamaoho, undermined their rangatiratanga and contributed to the loss of Ngāti Tamaoho autonomy. The Crown profoundly apologises that the cumulative effects of its actions have led to Ngāti Tamaoho's landlessness and socio-economic marginalisation.
64. Through this settlement, the Crown seeks to atone for the past injustices it has inflicted upon Ngāti Tamaoho. The Crown hopes to restore its honour and relieve Ngāti Tamaoho's justified sense of grievance. The Crown looks forward to building a new relationship with Ngāti Tamaoho based on co-operation, mutual trust, and respect for te Tiriti o Waitangi/the Treaty of Waitangi and its principles.

Relevant principles and provisions of the Te Ākitai Waiohū Treaty settlement

65. The Crown offers this apology to Te Ākitai Waiohū, to their tūpuna, and to their mokopuna. The Crown regrets its actions which breached te Tiriti o Waitangi/the [Treaty of Waitangi](#) and its principles and caused significant prejudice and suffering for Te Ākitai Waiohū.
66. The Crown is profoundly sorry for the manner in which it conducted purchases of Te Ākitai Waiohū land, and for the tens of thousands of acres of land it took as 'surplus' from transactions between Te Ākitai Waiohū and private settlers. The Crown recognises that Te Ākitai Waiohū welcomed Pākehā into their rohe, seeking friendly and cooperative relations with settlers and the Crown, and that the willingness of Te

Ākitai Waiohua to participate in land transactions contributed significantly to the development of the city of Auckland.

67. The Crown repaid this manaakitanga by treating members of Te Ākitai Waiohua as rebels, confiscating their lands and forcing them from their kāinga, and for this the Crown is truly sorry. In particular, the Crown sincerely regrets its treatment of rangatira, Ihaka Takaanini and his father Pepene Te Tihi, and the 21 others it imprisoned without good cause, without charge or trial. The Crown recognises that Ihaka Takaanini and Pepene Te Tihi were skilled and respected leaders, and the loss of these totara haemata was a significant blow to Te Ākitai Waiohua.
68. The cumulative effect of the Crown's purchasing and confiscations have left Te Ākitai Waiohua virtually landless. The Crown apologises that its actions have not only separated Te Ākitai Waiohua from their wāhi tapu, but also hindered the socio-economic development of their people and the ability of Te Ākitai Waiohua to grow as an iwi. The Crown hopes that this settlement marks the beginning of a new relationship with Te Ākitai Waiohua, one based on partnership, trust, and mutual respect for te Tiriti o Waitangi/the Treaty of Waitangi and its principles.

Cultural redress of the Treaty settlements

69. We have identified deeds of settlements that contain statements of the particular cultural, spiritual, historical and traditional association that each iwi respectively has with the area, that is recognised within the coastal statutory acknowledgement areas for Te Kawerau ā Maki, Ngāi Tai ki Tamaki and Te Ākitai Waiohua iwi:

Te Kawerau ā Maki

Te Kawerau ā Maki have an important shared ancestral and customary relationship with Te Whenua roa ō Kahu (the North Shore) extending from Maunga ā Uika (North Head) to the Whāngaparāoa Peninsula ...

Several places on the eastern coastline of the North Shore are of particular importance to Te Kawerau ā Maki as they are directly associated with the ancestor Maki, his warrior sons, and their descendant the ancestress Kahu. These places include: ...Karepiro (a battle site at Karepiro Bay, Weiti) ...

The seaways to the south and north of the Whāngaparāoa Peninsula are known respectively as Moana Te Rapu and Whānga-paraoa, because of their traditional association with the annual whale migration that took place through Te Moana nui ō Toi (the Hauraki Gulf).

Ngāi Tai ki Tāmaki

From Te Arai out to Hauturu out to Aotea and throughout Hauraki and Tāmaki Makarau and all the islands within, Ngāi Tai have significant multiple, and many layered associations ...

In April 1841 Ngāi Tai ki Tāmaki leaders Te Tara, Nuku, and Te Haua participated alongside others in the original transaction for the Mahurangi and Omaha Block, which [sic] boundaries extended from Takapuna to Te Arai reinforcing the knowledge that Ngāi Tai ki Tāmaki share joint interests over lands and waters as far north as Te Arai ...

Te Ākitai Waiohua

Te Ākitai Waiohua maintains an enduring association with the coastal marine area, incorporating the western coast of Hikurangi from Woodhill in the north, to Whatipu in the south, through to the Manukau Harbour in its entirety, across to the Waitematā Harbour and out to the Hauraki Gulf, from Whangaparaoa in the north to Orere Point in the south (the 'Coastal Area') ...

The waters of the Coastal Area are also seen as a living entity with its own mauri (life force) and mana (prestige), representative of the iwi associated with these waters. The life sustaining waters of the Coastal Area are a sacred resource with cleansing, purifying and healing properties that must be nurtured and protected ...

Te Ākitai Waiohua hold an ancient customary association with the coastal marine area, which has eternally sustained the existence of the people of Tāmaki Makaurau, as a means of transport, by obtaining food and other basic necessities of life. There is a corresponding cultural perspective that such a crucial relationship demands ongoing respect and recognition. Thus the historical and spiritual connection of Te Ākitai Waiohua with the coastal marine area is viewed as essential to the preservation of its very existence and an affirmation of its identity as a people.

70. The Crown's formal acknowledgement of these statements of association are recognised in the coastal statutory acknowledgement over specified areas in the Te Kawerau ā Maki, Ngāi Tai ki Tamaki and Te Ākitai Waiohua Treaty settlements. The location of the project site in relation to the coastal statutory acknowledgement area is shown in Attachment 4.
71. Te Kawerau ā Maki iwi, Ngāi Tai ki Tamaki iwi and Te Ākitai Waiohua iwi or any member of the associated iwi can cite their statutory acknowledgements as evidence of their association with the area. Auckland Council, the Environment Court and Heritage New Zealand Pouhere Taonga must have regard to them, and Auckland Council must forward to the relevant Trusts summaries of resource consent applications it receives (or notices served on the council under section 145(10) of the RMA) for activities within, adjacent to or directly affecting a statutory area.
72. We note that statutory acknowledgments are not indications of exclusive interest in a site, and sites subject to them may also hold importance for other iwi.

Resource management matters

73. Affording respect to the views of iwi on resource management matters and enabling iwi to meaningfully participate as a Treaty partner in resource management decision-making within their takiwā/area of interest are important ways in which the Crown can give effect to these acknowledgements and apologies.

Other redress of the Treaty settlements

74. The Treaty settlements do not create any new co-governance or co-management processes which would affect decision-making under the RMA for the project. The proposed project does not directly affect any specific commercial or cultural redress provided by the Treaty settlements.
75. As a general principle, an absence of specific settlement redress does not indicate the absence of an iwi cultural association with ancestral lands, sites, wāhi tapu or other taonga within an area. Local tangata whenua and their representatives would be best placed to advise on such matters in the first instance.
76. Importantly, cultural associations with ancestral lands, water, sites, wāhi tapu, and other taonga – regardless of whether or not they are specifically identified in a Treaty

settlement – are deemed to be matters of national importance that must be recognised and provided for in decision-making under Part 2 section 6(e) of the RMA.

Tāmaki Collective Redress Act

77. The Ngā Mana Whenua o Tāmaki Makaurau Collective Redress Act 2014 and its associated deed provide collective redress for the shared interests of the 13 iwi and hapū of Tāmaki Collective in maunga, motu and lands within Tāmaki Makaurau (Auckland). These provisions do not settle any historical Treaty claims, which are addressed through specific settlements with each iwi/hapū. The redress provided through the Act is provided 'on account' of those individual Treaty settlements.
78. A significant part of the collective redress is concerned with governance and management arrangements over the maunga of central Auckland and some of the islands of Tīkapa Moana (Hauraki Gulf). Tūpuna Maunga are vested in the Tūpuna Taonga o Tāmaki Makaurau Trust and the Maunga Authority is responsible for their day-to-day administration and management.
79. There are no close Tūpuna Maunga to the project site. We consider it unlikely that the project site will directly affect any Tūpuna Maunga.
80. Some commercial redress is also included in the Tāmaki Collective arrangements, in the form of rights of first refusal (RFR) over Crown properties over a wide area of Auckland⁴, and second rights to purchase deferred selection properties not selected or acquired by iwi/hapū under their individual settlements.
81. Although the proposed project site lies within the RFR area, none of the land within it is Crown-owned. Therefore, the project would not affect any commercial redress available to Ngā Mana Whenua o Tāmaki Makaurau under the Ngā Mana Whenua o Tāmaki Makaurau Collective Redress Act 2014, which is managed by the Whenua Haumi Roroa o Tāmaki Makaurau Limited Partnership

Current negotiation mandates and settlement negotiations

82. Section 17(3)(d) of the FTCA requires this report to identify any recognised negotiation mandates for, or current negotiations for, Treaty settlements that relate to the project area.
83. We have identified Treaty settlement negotiations have commenced with Ngāti Maru (Hauraki) and Ngāti Tamaterā. In addition, the Crown is negotiating a final settlement with Te Rūnanga o Ngāti Whātua on behalf of Ngāti Whātua. The project site lies within the areas of interest for each of these settlement negotiations.
84. We have identified the recognised negotiation mandates relating to the project area for:
 - a. Ngāti Te Ata
85. The Crown recognised the mandate of the Ngāti Te Ata Claims Support Whānau Trust to negotiate a Treaty settlement in May 2011 and signed terms of negotiation with the Trust in June 2011. Although negotiations have paused, the Crown-recognition of the mandate has not been withdrawn. Ngāti Te Ata has yet to establish a post-settlement governance entity to receive redress under their settlement.

⁴ Part 3 of [Attachments to Ngā Mana Whenua o Tāmaki Makaurau Collective Redress Deed](#).

Details in this report affect certain provisions of the FTCA

Notices of referral decisions

86. Under section 25 of the FTCA, you must give notice of the decisions made on an application for referral of a project to a panel, and the reasons for your decisions, to the applicant and anyone invited to comment under section 21 of the FTCA.
87. You did not invite comment on the referral application from iwi authorities or other Māori groups. However, if you decide to refer this project to a panel, the notice of decisions and associated reasons must be given to:
 - a. the relevant iwi authorities and Treaty settlement entities identified in this report
 - b. any other iwi authorities or Treaty settlement entities you consider have an interest in the matter
 - c. any group that is or party to either a joint management agreement or Mana Whakahono ā Rohe under the RMA that relates to the project area.
88. If you decide to refer the project, we have identified 10 relevant iwi authorities and 11 relevant Treaty settlement entities who must receive notice of the decisions. Contact details are in Attachment 2.
89. We have identified 4 'other' parties and 17 groups seeking customary marine title or protected customary rights under the MACAA (as explained below and listed in Attachment 4) who may have an interest in the project, and whom we recommend receive the notice of decisions if you decide to refer the project. Contact details are in Attachment 2.
90. There are no relevant joint management agreements or Mana Whakahono ā Rohe to consider.

Expert consenting panel membership and invitation to comment

91. If a project is referred to a panel, the appointed panel must include one person nominated by the relevant iwi authorities under clause 3(2)(b) of Schedule 5 of the FTCA.
92. In the event iwi authorities nominate more than one person, the panel convener must decide which nominee to appoint. The panel convener has discretion to increase the panel membership to accommodate the matters specified in clauses 3(6)(a) – 3(6)(e) of Schedule 5 of the FTCA, which include matters unique to any relevant Treaty settlement Act.
93. A panel must invite comments on a resource consent application or notice of requirement for a referred project from the parties listed in clause 17(6) of Schedule 6 of the FTCA. This includes:
 - a. the relevant iwi authorities, including those identified in this report
 - b. a Treaty settlement entity relevant to the referred project, including an entity that has an interest under a Treaty settlement in an area where a referred project is to occur, and an entity identified in this report
 - c. any applicant group under the MACAA identified in the report obtained under section 17(1).
94. If you decide to refer the project, we have identified 10 relevant iwi authorities and 11 relevant Treaty settlement entities that a panel must invite to comment.
95. Under the MACAA Act, an applicant group identified under the Act means one or more iwi, hapū, or whānau groups that seek recognition under Part 4 of the MACAA of their

protected customary rights or customary marine title by either a recognition order granted by the High Court; or an agreement negotiated with the Crown (via The Office for Māori Crown Relations – Te Arawhiti).

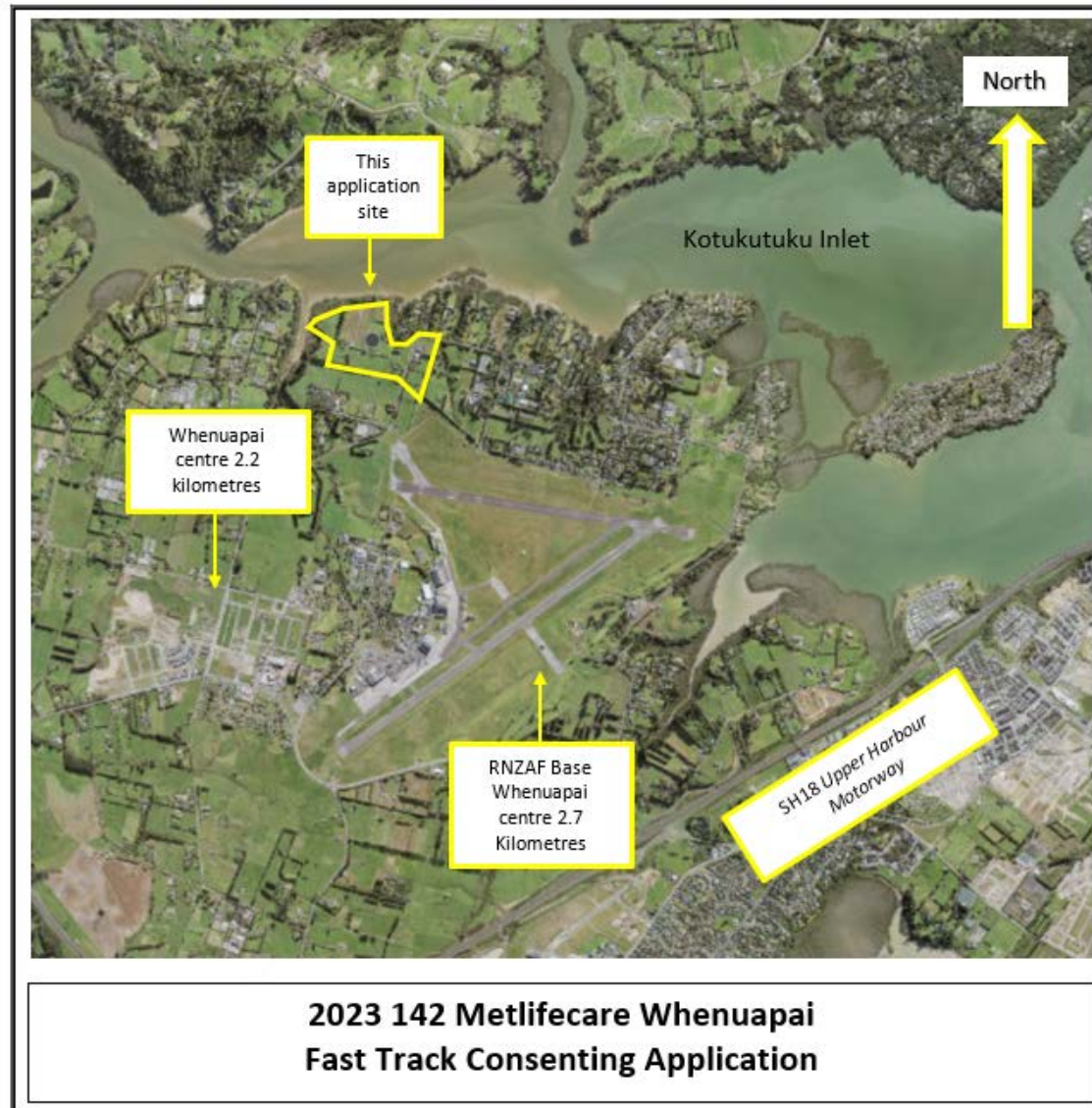
96. Those groups with applications under the MACAA in the common marine and coastal area of the project site who could be potentially affected from the project are shown in Attachment 4.
97. A panel may also invite comments from any other person it considers appropriate.
98. We have identified four 'other' parties who may have an interest in the project area. We recommend you direct a panel under section 24(2)(e) of the FTCA to invite comment from each party if you decide to refer the project.

Provision of cultural impact assessment

99. Any resource consent application submitted to a panel for determination must include a cultural impact assessment prepared by or on behalf of the relevant iwi authorities, or a statement of any reasons given by the relevant iwi authorities for not providing that assessment.⁵ The Environmental Protection Authority which provides support services to a panel, will not confirm an application as complete and ready for consideration by a panel until this requirement is satisfied.
100. There is more than one relevant iwi authority. The project applicant will need to engage with each to determine their requirements for a cultural impact assessment, including whether they wish to prepare one individually or jointly, or whether they may wish to defer to another iwi in respect of the matter. Relevant iwi authorities are listed in Attachment 2.

⁵ Clause 9(5), 13(1)(k) and 13(1)(l) of Schedule 6 of the FTCA.

Attachment 1 – Project Location – Surrounding Area



Attachment 2 – Contact information

Iwi/hapū	Settlement documents / Status	Representative body	RMA relevant iwi authority	Treaty settlement entity	Other party	Contact person
Ngāti Whātua Ōrakei	Ngāti Whātua Ōrakei Claims Settlement Act 2012	Ngāti Whātua Ōrakei Trust Board	Iwi authority for RMA purposes			CEO: Lisa Davis s 9(2)(a)
		Ngāti Whātua Ōrakei Trustee Limited		Post-settlement governance entity		cc: RMA contact: Andrew Brown tokitaiao@ngatiwhatuaorakei.com
Ngāti Whātua o Kaipara	Ngāti Whātua o Kaipara Claims Settlement Act 2013	Ngā Maunga Whakahii o Kaipara Development Trust	Iwi authority for RMA purposes	Post-settlement governance entity		CEO: Sarah Ihaia-Chapman admin@kaiparamoana.com cc: RMA Contact - Savanna Steele s 9(2)(a)
Te Kawerau ā Maki	Te Kawerau ā Maki Claims Settlement Act 2015	Te Kawerau Iwi Settlement Trust	Iwi authority for RMA purposes	Post-settlement governance entity		Executive Chair: Te Warena Taua s 9(2)(a) cc: Kaitiaki - Edward Ashby s 9(2)(a)
Ngāti Tamaoho	Ngāti Tamaoho Claims Settlement Act 2018	Ngāti Tamaoho Trust	Iwi authority for RMA purposes			CEO: Geneva Harrison info@tamaoho.maori.nz
		Ngāti Tamaoho Settlement Trust		Post-settlement governance entity		cc: RMA contact - Lucie Rutherford rmaofficer@tamaoho.maori.nz
Ngāi Tai ki Tāmaki	Ngāi Tai ki Tāmaki Claims Settlement Act 2018	Ngāi Tai ki Tāmaki Trust	Iwi authority for RMA purposes	Post-settlement governance entity		Tumu Whakahaere: Lynette Penrose admin@ngaitaitamaki.iwi.nz cc: RMA contact - Jacquie Lindsay s 9(2)(a)
Te Ākitai Waiohū	Deed of settlement signed 12 Nov 2021	Te Ākitai Waiohū Iwi Authority	Iwi authority for RMA purposes			Chairperson: Karen Wilson tawia@teakitai.com
		Te Ākitai Waiohū Settlement Trust		Post-settlement governance entity		
Ngāti Maru (Hauraki)	Deed of settlement initialled 8 Sept 2017	Ngāti Maru Rūnanga Trust	Iwi authority for RMA purposes	Post-settlement governance entity		CEO: David Taipari office@ngatimaru.iwi.nz cc: RMA Contact - William Peters
Ngāti Tamaterā	Deed of settlement initialled 20 Sep 2017	Ngāti Tamaterā Treaty Settlement Trust	Iwi authority for RMA purposes	Post-settlement governance entity		General Manager & RMA contact: s 9(2)(a)
Ngāti Te Ata		Te Ara Rangatu o Te Iwi o Ngāti Te Ata Waiohū	Iwi authority for RMA purposes			Manager: Karl Flavell cc: RMA Kaitiaki taiao@ngatiteata.iwi.nz
Ngāti Whātua		Te Rūnanga o Ngāti Whātua	Iwi authority for RMA purposes			Manahautū / CE: Alan Riwaka runanga@ngatiwhatua.iwi.nz cc: RMA Contact - Antony Thompson s 9(2)(a)
Tāmaki Collective	Ngā Mana Whenua o Tāmaki Makaurau	Whenua Haumi Roroa o Tāmaki Makaurau Limited Partnership (commercial)		Post-settlement governance entity		C/- Don Wackrow - Wackrow Williams & Davies Limited s 9(2)(a)

Iwi/hapū	Settlement documents / Status	Representative body	RMA relevant iwi authority	Treaty settlement entity	Other party	Contact person
	Collective Redress Act 2014	Tūpuna Taonga o Tāmaki Makaurau Trust (cultural)		Post-settlement governance entity		C/- Don Wackrow - Wackrow Williams & Davies Limited § 9(2)(a)
Marutūāhu Iwi Collective	Marutūāhu Iwi Collective Redress Deed of settlement initialled 27 Jul 2018	Marutūāhu Rōpū General Partner Limited		Post-settlement governance entity		C/- Don Wackrow - Wackrow Williams & Davies Limited § 9(2)(a) cc: lawyers@wpalawyers.co.nz
Ngāti Koheriki		Ngāti Koheriki Claims Committee			Other party may have an interest	Chair: Joe Johnson § 9(2)(a) cc: Kiwi Johnson § 9(2)(a)
Ngāti Paoa		Ngāti Paoa Iwi Trust			Other party may have an interest	Tumuaki (Chair): Tania Tarawa § 9(2)(a)
		Ngāti Paoa Trust Board			Other party may have an interest	Principal/RMA contact: Dave Roebeck nptb@ngatipaoatrustboard.co.nz
Ngāti Manuhiri		Ngāti Manuhiri Settlement Trust			Other party may have an interest	CEO: Nicola MacDonald info@ngatimanuhiri.iwi.nz cc: RMA Kaitiaki § 9(2)(a)

Attachment 3 – Planned Layout



Attachment 4 – Applicants for customary marine title or protected customary rights

Applicant Group Name	Engagement		Application Status	Contact person
	Crown	High Court		
Ngā Puhi nui tonu, Ngāti Rāhiri, Ngāti Awa, Ngāi Tahu and Ngāitawake	MAC-01-01-050 MAC-01-01-056 MAC-01-01-058	CIV-2017-404-537	Progressing	Joseph Kingi - jrrk999@yahoo.com Tim Castle (Counsel) - tim.castle@xtra.co.nz
Ngāitawake	MAC-01-01-133	CIV-2017-404-558	Progressing	Rihari Dargaville - rihari.takura@gmail.com Tim Castle (Counsel) - tim.castle@xtra.co.nz
Te Hikutu Whānau and Hapū (PCR only)	MAC-01-01-125	CIV-2017-404-570	Progressing	Tim Castle (Counsel) - tim.castle@xtra.co.nz
Ngāti Whātua Ōrākei Trust	MAC-01-02-006	CIV-2017-404-520	Progressing	Ngarimu Blair - ngarimu@ngatiwhatuaorakei.com Natasha Strong (Counsel for MAC-01-02-006) - natashas@nwo.iwi.nz Rachael Jones (Counsel for CIV-2017-404-520)
Ngāi Tai ki Tāmaki	MAC-01-02-003	CIV-2017-404-564	Progressing	James Brown - james.brown@ngaitai-ki-tamaki.co.nz Renika Siciliano - renika.siciliano@mccawlewis.co.nz
Te Taou (Waitematā)		CIV-2017-404-567	Progressing	Tim Castle (Counsel) - tim.castle@xtra.co.nz
Ngāti Kawau and Te Waiariki Kororā	MAC-01-01-073	CIV-2017-485-398	Progressing	Janet Mason (Counsel) - mason@phoenixlaw.expert
Te Rūnanga o Ngāti Whātua	MAC-01-01-140	CIV-2017-404-563	Progressing	Alan Riwaka - alan.riwaka@ngatiwhatua.iwi.nz Mai Chen (Counsel) - mai.chen@chenpalmer.com
Ngāti Te Ata	MAC-01-02-005	CIV-2017-404-569	Progressing	Roimata Minihinnick - roimataminihinnick@yahoo.co.nz Lisa Roberts - maoriadmin@corbanrevell.co.nz
Ngāti Taimanawaiti (Ngāti Tai)	MAC-01-02-004	CIV-2017-404-518	Progressing	Darrel Naden (Counsel) - darrell@tamakilegal.com Stephanie Roughton (Counsel) - stephanie@tamakilegal.com
Ihaia Paora Weka Tuwhera Gavala Murray Mahinepua Reserve Trust Ngāti Rua Iti Ngāti Muri Nagatirumahue Ngāti Kawau Ngāti Haiti Ngāitupango Ngā Puhi Ngāti Kahu Te Auopouri	MAC-01-01-023		Progressing	Tahua Murray - taraire.cottage@xtra.co.nz
Ngaati Whanaunga (PCR only)	MAC-01-01-091		Progressing	Mike Baker - mbaker@ngaatiwhanaunga.maori.nz
Reti Whānau	MAC-01-01-105	CIV-2017-485-515	Progressing	Janet Mason (Counsel) - mason@phoenixlaw.expert
Te Kawerau a Maki	MAC-01-02-007		Progressing	Robin Taua-Gordon - robin.taua-gordon@tekawerau.iwi.nz
Ngaati Tamaoho	MAC-01-03-010		Progressing	Ngāati Tamaoho Trust Board - info@tamaoho.maori.nz (Chair - Tori Ngataki)
Hauraki Māori Trust Board	MAC-01-03-001		Progressing	Terrence John McEnteer - paul.majurey@ahmlaw.nz
Ngāti Tamatera	MAC-01-03-011		Progressing	enquiries@tamatera.co.nz

Source: Kōrero Takutai (Te Kete Kōrero a Te Takutai Moana Information Hub – Te Arawhiti) & Te Arawhiti