

NORTH SHORE PROJECT

LANDSCAPE PRELIMINARY DESIGN REPORT

Released under the provision of
the Official Information Act 1982

DOCUMENT QUALITY ASSURANCE

BIBLIOGRAPHIC REFERENCE FOR CITATION:

Boffa Miskell, 2020. NORTH SHORE PROJECT, LANDSCAPE PRELIMINARY DESIGN Report by Boffa Miskell Limited for HND DEVELOPMENTS.

PREPARED BY:	Dave Parker Associate Principal Boffa Miskell Ltd
	Tom Hemi Landscape Architect Boffa Miskell Ltd
REVIEWED BY:	Michael Hawes Partner Boffa Miskell Ltd
STATUS:	Revision / version: 02Issue date: 12th August 2021

CONTENTS

CONTEXT - MOVEMENT	1
CONTEXT - ACTIVITIES	2
PUBLIC REALM STRATEGY	3
PUBLIC REALM CONCEPT	4
AXONOMETRIC 01 - NORTHWEST	4
AXONOMETRIC 02 - SOUTHEAST	5
LANDSCAPE CONCEPT PLAN	6
ACCESS STRATEGY	7
LANDSCAPE CONCEPT	8
MODEL VIEW - HURSTMERE GREEN CONNECTION	8
MODEL VIEW - CENTRAL LANEWAY NORTH	9
MODEL VIEW - CENTRAL LANEWAY SOUTH	10
MODEL VIEW - SOUTHERN COURTYARD	11
MATERIALS STRATEGY	13
FINISHES & MATERIALITY	13
CONTEXT	13
MATERIALS STRATEGY	14
FINISHES & MATERIALITY	14
VEGETATION STRATEGY	15
TREES	15
PLANTING	17
PLANTING - PUBLIC AREAS	18
DRAINAGE STRATEGY	20
PRELIMINARY DESIGN DRAWINGS	21

LANDSCAPE & PUBLIC REALM CONCEPT

Released under the provision of
the Official Information Act 1982

CONTEXT - MOVEMENT

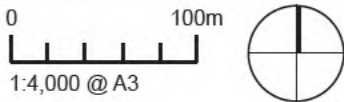
- LEGEND
- LANEWAY / COVERED ARCADE CONNECTION
 - INFORMAL CONNECTION
 - STREET / PUBLIC SPACE CONNECTION
 - STRAND FOOTPATH COLLECTORS



CONTEXT - ACTIVITIES

LEGEND

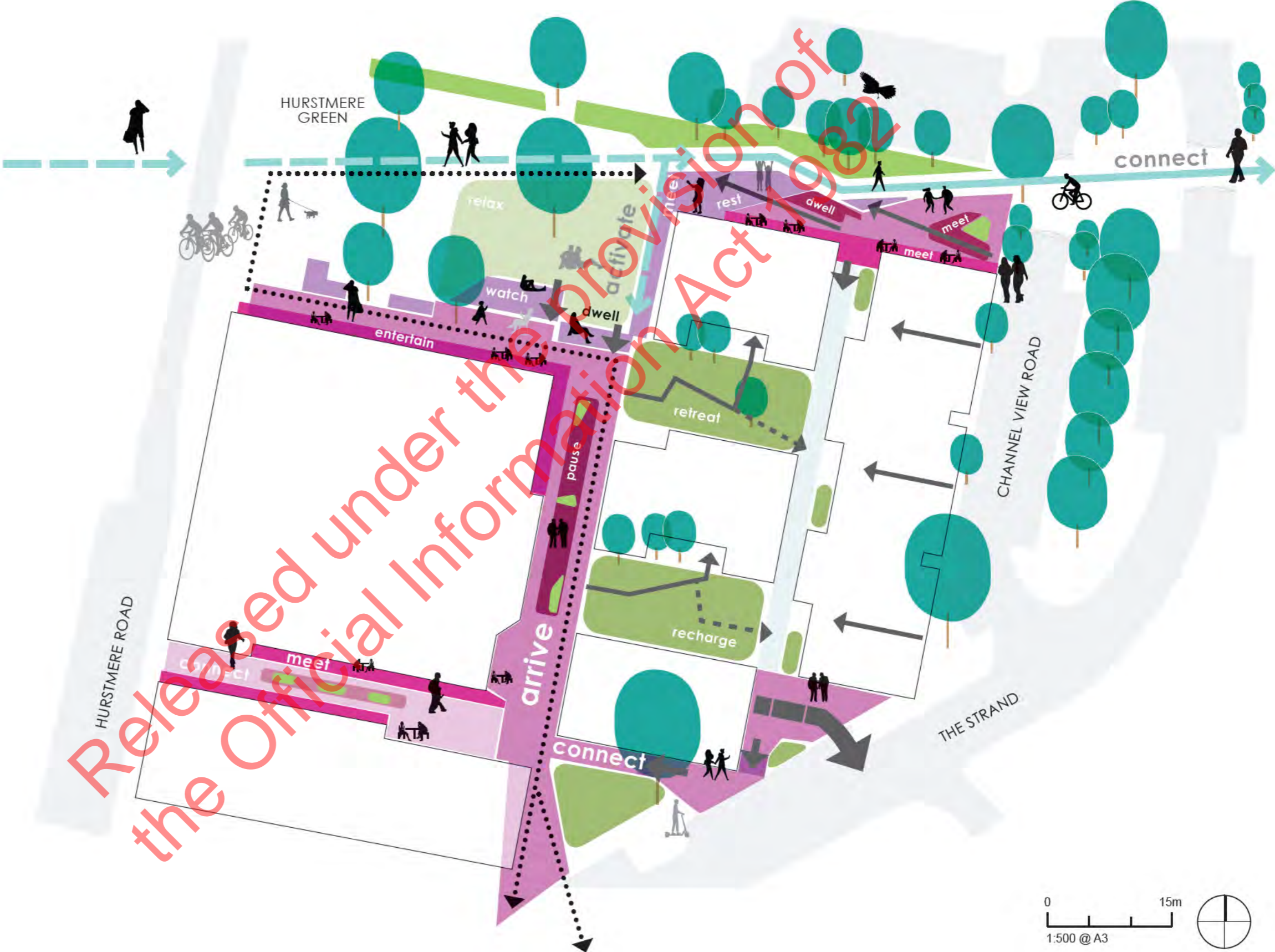
- PROPOSED MIXED USE DEVELOPEMNT
- EXISTING RESERVE / GREEN OPEN SPACE
- PROPOSED NEW TOWN SQUARE
- PROPOSED NEW PUBLIC REALM
- TOWN CENTRE FRONTAGES;
ACTIVE MIX OF RETAIL & HOSPITALITY
- CAR PARKING
- EVENTS & CONCERTS
- MARKETS
- ANCHOR RETAIL
- HOSPITALITY - FOOD & BEVERAGE
- HOSPITALITY - CAFE
- PASSIVE RECREATION - GREEN OPEN SPACE
- PLAY
- PASSIVE & ACTIVE RECREATION - BEACH
- LIBRARY & COMMUNITY FACILITIES



PUBLIC REALM
STRATEGY

LEGEND

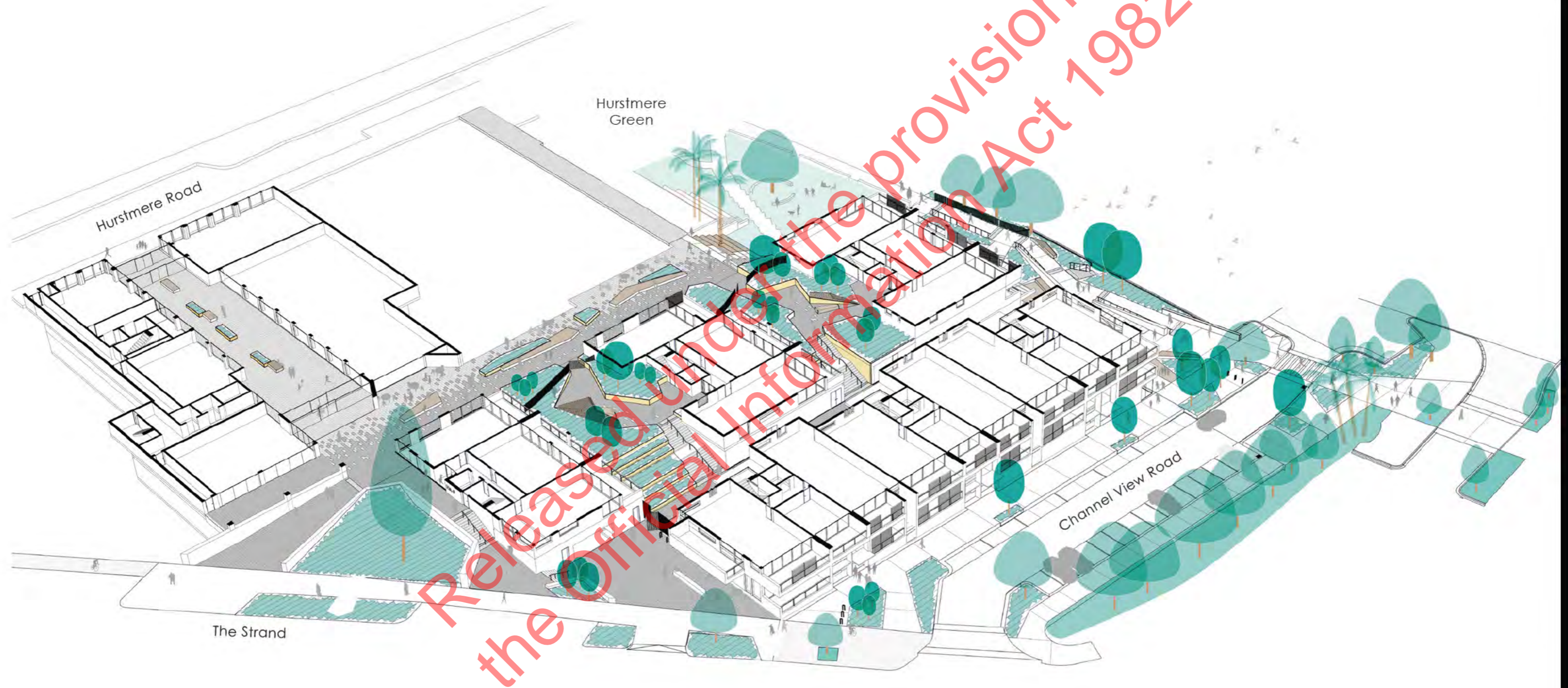
- ACCESSIBLE WALKING CONNECTION
- LANEWAY CONNECTIONS
- INTERNAL LANEWAY CONNECTIONS
- PRIVATE LANEWAY CONNECTIONS
- HABITABLE LEVEL CHANGES
- PAUSE NODES
- ACTIVITY SPILL OUT OPPORTUNITIES





PUBLIC REALM CONCEPT

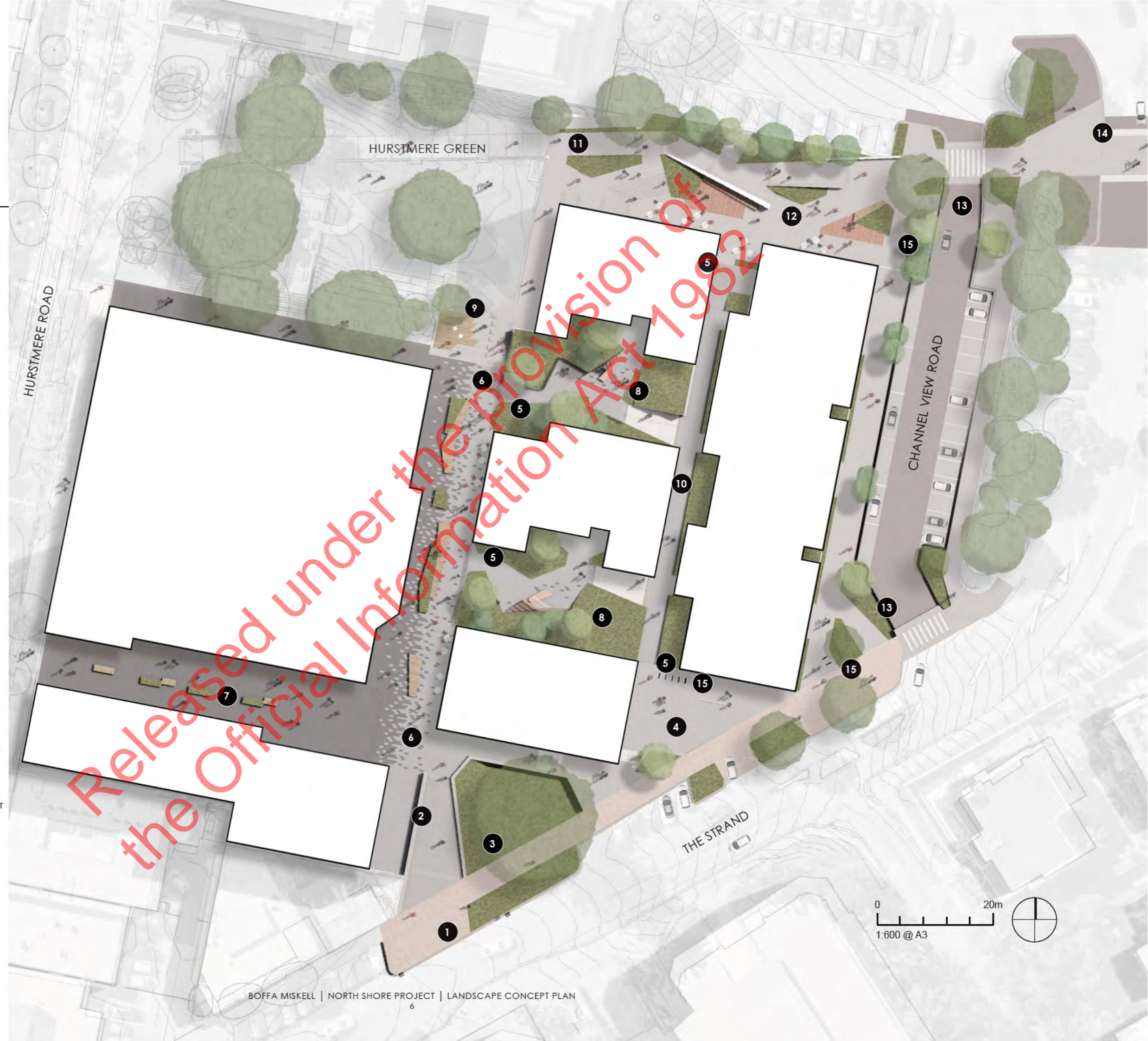
AXONOMETRIC 02 - SOUTHEAST



LANDSCAPE CONCEPT PLAN

LEGEND

- 1 KERB BUILD OUT & FOOTPATH REINSTATEMENT TO
- 2 ACCESSIBLE PEDESTRIAN ENTRANCE TO PUBLIC LANEWAY
- 3 STRUCTURAL ROOT ZONE OF EXISTING NORFOLK ISLAND PINE PROTECTED IN GARDEN BED. EXISTING LEVELS AROUND TRUNK MAINTAINED
- 4 LOWER PLAZA / CAR PARK ENTRY SPACE
- 5 THE PRIVATE COURTYARDS & INTERNAL LANE ARE FENCED & GATED ALLOWING FOR ACCESS CONTROL
- 6 PUBLIC LANEWAY CONSISTING OF RAISED TIMBER BLEACHERS, STEEL PLANTERS & STONE PAVING TO ASSIST FOOD & BEVERAGE SPILL OUT SPACES
- 7 WESTERN PUBLIC LANEWAY/ATRIUM CONNECTING TO HURSTMERE ROAD
- 8 PRIVATE COURTYARDS CONSISTING OF RAISED STEEL PLANTERS & TIMBER BATTEN STRUCTURES ABOVE SEATING AREA. COURTYARDS ARE FENCED FROM THE PUBLIC LANEWAY WITH SWIPE ACCESS FOR RESIDENTS. SKYLIGHT ABOVE GYM IN NORTHERN COURTYARD
- 9 CONCRETE STAIRCASE & TIMBER BLEACHERS CONNECT PUBLIC LANEWAY WITH HURSTMERE GREEN THROUGH CONSISTENT MATERIALS
- 10 INTERNAL LANE WITH RAISED STEEL PLANTERS ON THE EASTERN EDGE TO PROVIDE PRIVACY FOR GROUND FLOOR APARTMENTS
- 11 ACCESSIBLE PUBLIC CONNECTION FROM HURSTMERE GREEN TO TAKAPUNA BEACH ALONG THE 'RANGITOTO AXIS'
- 12 NORTHERN SPACE PROVIDES SPILL OUT AREAS FOR GROUND FLOOR FOOD & BEVERAGE OPTIONS. LEVELS ARE MANAGED THROUGH TERRACED STEPS
- 13 CHANNEL VIEW ROAD UPGRADE WIDENS FOOTPATH ALONG BUILDING EDGE, PROVIDES STREET PLANTING & INCLUDES RAISED TABLE CROSSING ALONG 'RANGITOTO AXIS' AND STRAND ENTRY POINT
- 14 RAISED TABLE CROSSING ALONG 'RANGITOTO AXIS' ON THE STRAND
- 15 BIKE RACKS POSITIONED AROUND THE BUILDING & AT ENTRANCE POINTS



ACCESS STRATEGY

LEGEND

- ACCESSIBLE WALKING CONNECTION
- FRONT DOOR LOCATIONS TO PUBLIC REALM
- SECURE ACCESS POINT
- EXIT ONLY - FIRE EGRESS
- AFTER HOURS SECURE THRESHOLD



LANDSCAPE CONCEPT

MODEL VIEW - HURSTMERE GREEN CONNECTION



LANDSCAPE CONCEPT

MODEL VIEW - CENTRAL LANEWAY NORTH



LANDSCAPE CONCEPT

MODEL VIEW - CENTRAL LANEWAY SOUTH



LANDSCAPE CONCEPT

MODEL VIEW - SOUTHERN COURTYARD



LANDSCAPE STRATEGY

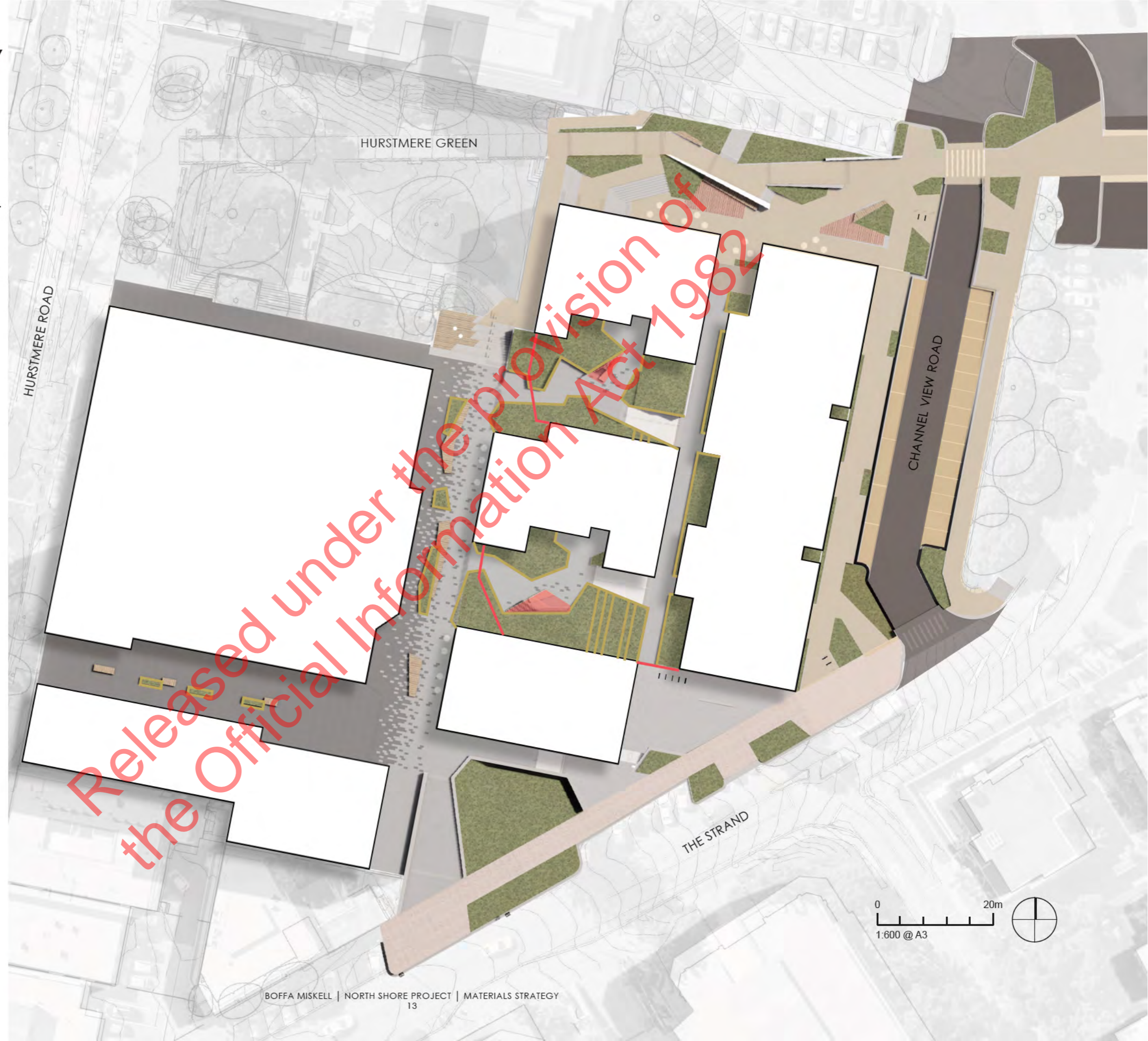
Released under the provision of
the Official Information Act 1982

MATERIALS STRATEGY

FINISHES & MATERIALITY

LEGEND

	BASALT 'BLUESTONE' PAVING - SAWN
	BASALT 'BLUESTONE' PAVING - BUSH HAMMERED
	INSITU CONCRETE FOOTPATH
	INSITU CONCRETE PARKING BAYS
	ASPHALT FOOTPATH
	ASPHALT CARRIAGEWAY
	TIMBER DECKING
	PAVED FOOTPATH REINSTATEMENT
	RAISED TIMBER BLEACHERS
	RAISED STEEL PLANTERS
	TIMBER BATTEN FENCING & GATES
	TIMBER BATTEN SHELTERS
	CONCRETE WALLS
	PLANTING



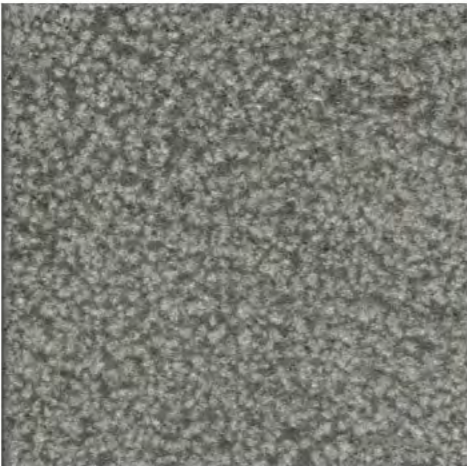
MATERIALS STRATEGY

FINISHES & MATERIALITY



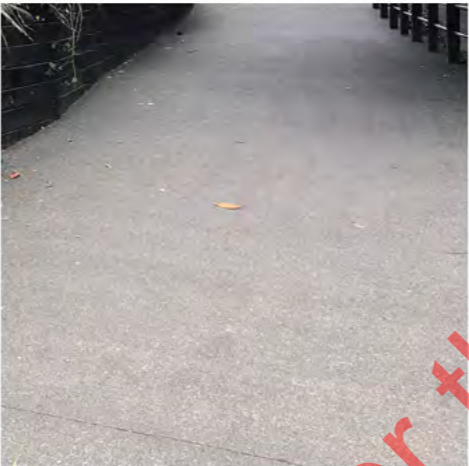
TYPE B SAWN BASALT

50mm pavers on outdure 'quickbuild' pedestal deck framing



TYPE B BUSH-HAMMERED BASALT

50mm pavers on outdure 'quickbuild' pedestal deck framing



INSITU CONCRETE FOOTPATH

Exposed Aggregate to match Hurstmere Green; Nom. 150mm U5E insitu concrete 10mm basalt chip, lightly exposed aggregate finish, 4% Firth 'Fog' oxide



INSITU CONCRETE PARKING BAYS

150mm U5E insitu concrete 10mm basalt chip, lightly exposed aggregate finish, 4% Firth 'Haze' oxid



ASPHALT FOOTPATH

City Mix 10



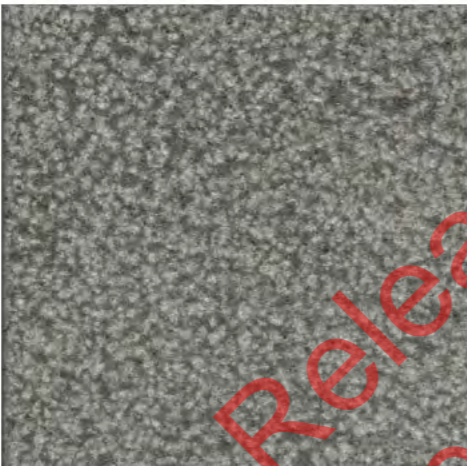
TIMBER DECKING

40 x 140mm Accoya boards with gripsure non slip inserts



TYPE B SAWN BASALT

40/75mm pavers laid on nom. 35mm steintec tuffbed & tuffbond primer bedding with 5mm Tuffgrout joints over 150mm reinforced concrete base.



TYPE B BUSH-HAMMERED BASALT

40/75mm pavers laid on nom. 35mm steintec tuffbed & tuffbond primer bedding with 5mm Tuffgrout joints over 150mm reinforced concrete base.



TIMBER SEATING

60 x 60mm Accoya battens on steel frame



RAISED METAL CLAD PLANTERS

5mm powder coated aluminum panels fixed to concrete upstands/blockwork or 5mm powder coated aluminum freestanding planters supported on pedestals



TIMBER BATTEN FENCING, GATES & SHELTERS

60 x 100mm Accoya battens with steel frame



PRECAST CONCRETE WALLS/ STEPS/BLEECHERS

Finish and mix to match Hurstmere Green; Nom. F5 precast concrete with colour additive. Lightly sandblasted and/ or honed finish.

VEGETATION STRATEGY

TREES

LEGEND

- EXISTING TREES
- POHUTUKAWA
- NIKAU
- TITOKI
- TAWAPOU
- KOWHAI
- KOHEKOHE

Proposed trees to be 160, 400 and 1000 litre grades planted with nom.4 m³ soil volume per tree.

All planting on podium areas to be drip irrigated



VEGETATION STRATEGY

TREES

CANOPY COVER REFERENCING UNDERLYING LANDSCAPE TYPOLOGIES

Trees are proposed to be planted in clusters or single trees informally throughout the site to provide shelter and definition to pause and gathering spaces. Species will be distributed to reinforce legibility. Larger anchor trees such as Pohutukawa are used at nodal points or intersections, trees with light foliage such as Kowhai are used to maintain natural light levels in courtyard spaces, Kohekohe are used in shaded areas of the courtyards whilst Titoki is used to attract bird life. Species within the road reserve include Nikau, and also Pohutukawa to align with those in surrounding local roads.



PŌHUTUKAWA

Metrosideros excelsa

Nom. 400L and 1000L grade



NIKAU

Rhopalostylis sapida

Nom. 160L and 400L grade



TĪTOKI

Alectryon excelsus

Nom. 160L and 400L grade



TAWAPOU

Planchonella costata

Nom. 160L and 400L grade



KŌWHAI

Sophora microphylla

Nom. 160L and 400L grade



KOHEKOHE

Dysoxylum spectabile

Nom. 160L and 400L grade

VEGETATION STRATEGY

PLANTING

LEGEND

- EXISTING PLANTING TO BE RETAINED
- PUBLIC REALM PLANTING
- PRIVATE AMENITY PLANTING

Proposed planting to have nom. 450mm depth growing media and 75mm mulch layer.

All planting on podium areas to be drip irrigated



VEGETATION STRATEGY

PLANTING - PUBLIC AREAS

NATIVE VEGETATION SUPPORTING BIODIVERSITY AND SPATIAL FUNCTION

Groundcover and shrub species will be planted to provide a soft mix of foliage textures, creating amenity throughout the garden areas. The species are chosen to suit a range of conditions, including shade, wet and dry ground conditions.



APODASMIA SIMILIS

Oi oi, allow 3 - 5no. plants per m² grades vary between 3Litre and 10Litre. Typical 450mm growing medium



CAREX SECTA / CAREX VIRGATA

Purei, allow 3 - 5no. plants per m² grades vary between 5Litre and 15Litre. Typical 450mm growing medium



COPROSMA ACEROSA

Creeping wire wine, allow 6 - 9no. plants per m² grades vary between 1Litre and 2Litre. Typical 450mm growing medium



COPROSMA REPENS 'POOR KNIGHTS'

Taupata, allow 3- 5no. plants per m² grades vary between 5Litre and 15Litre. Typical 450mm growing medium



DISPHYMA AUSTRALE

Horokaka, native ice plant, allow 6 - 9no. plants per m² grades vary between 1Litre and 2Litre. Typical 450mm growing medium



DIANELLA NIGRA

Turutu, allow 3 - 5no. plants per m² grades vary between 3Litre and 15Litre. Typical 450mm growing medium



LIBERTIA GRANDIFLORA

Mikoikoi, allow 4 - 7no. plants per m² grades vary between 3Litre and 10Litre. Typical 450mm growing medium



LIBERTIA IXIOIDES

New Zealand iris, allow 4 - 7no. plants per m² grades vary between 5Litre and 10Litre. Typical 450mm growing medium



MUEHLENBECKIA AXILLARIS

Pohuehue, allow 2 - 4 no. plants per m² grades vary between 5Litre and 15Litre. Typical 450mm growing medium



ARTHROPODIUM CIRRATUM

Rengaarenga, allow 2 - 4no. plants per m² grades vary between 1Litre and 2Litre. Typical 450mm growing medium



PHORMIUM COOKIANUM

Wharariki, allow 3 - 5no. plants per m² grades vary between 5Litre and 15Litre. Typical 450mm growing medium



PRATIA ANGULATA

Panakenake, allow 6 - 9no. plants per m² grades vary between 2Litre and 2Litre. Typical 450mm growing medium

VEGETATION STRATEGY

PLANTING - PRIVATE COURTYARDS

VEGETATION SUPPORTING CHARACTER AREAS

A mix of native and exotic groundcover and shrub species will be planted to provide a soft mix of foliage textures, creating amenity throughout the private courtyard garden areas. The species are chosen to suit the site conditions such as sun/shade and selected for their hardy, architectural and coastal characteristics.



ASPENIUM OBTUSATUM

Shore spleenwort, allow 6no. plants per m² grades vary between 5Litre and 15Litre. Typical 450mm growing medium



PSEUDOPANAX ARBOREUS

Puahou, allow 2 - 3no. plants per m² grades vary between 1Litre and 2Litre. Typical 450mm growing medium



COPROSMA REPENS 'POOR KNIGHTS'

Taupata, allow 3- 5no. plants per m² grades vary between 5Litre and 15Litre. Typical 450mm growing medium



DICHONDRA REPENS

Mercury Bay weed, allow 5 - 9no. plants per m² grades vary between 2Litre and 5Litre. Typical 450mm growing medium



DIANELLA NIGRA

Turutu, allow 3 - 5no. plants per m² grades vary between 3Litre and 15Litre. Typical 450mm growing medium



GLEICHENIA DICARPA

Tangle Fern, allow 3 - 5no. plants per m² grades vary between 3Litre and 15Litre. Typical 450mm growing medium



LIBERTIA IXIOIDES

New Zealand iris, allow 4 - 7no. plants per m² grades vary between 5Litre and 10Litre. Typical 450mm growing medium



LIGULARIA RENIFORMIS

Tractor Seat Ligularia, allow 2 - 4no. plants per m² grades vary between 5Litre and 10Litre. Typical 450mm growing medium



MUEHLENBECKIA AXILLARIS

Pohuehue, allow 2 - 4 no. plants per m² grades vary between 5Litre and 15Litre. Typical 450mm growing medium



BLECHNUM NOVAE-ZEALANDIAE

Kiokio, allow 3- 5no. plants per m² grades vary between 5Litre and 15Litre. Typical 450mm growing medium



PHORMIUM COOKIANUM

Wharariki, allow 3 - 5no. plants per m² grades vary between 5Litre and 15Litre. Typical 450mm growing medium




PHILODENDRON 'XANADU'


Winterbourn, allow 2 - 4no. plants per m² grades vary between 3Litre and 10Litre. Typical 450mm growing medium

DRAINAGE STRATEGY


LEGEND




FALL



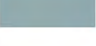
CHANNEL DRAIN




CHANNEL & STREET SUMP



PEDESTAL PAVING DRAINS TO PODIUM



PLANTING ON PODIUM TO BE DRAINED



DIRECT FIXED OR INSITU CONCRETE PAVING TO BE DRAIN VIA SURFACE DRAINS



PRELIMINARY DESIGN DRAWINGS

Released under the provision of
the Official Information Act 1982

GENERAL NOTES

1. All drawings to be read in conjunction with the landscape specification and other consultant's drawings.
2. Drawings are not to be scaled, used dimensioned measurements only.
3. All dimensions in millimeters unless noted otherwise.
4. Contractors to verify all dimensions on site prior to commencing work.
5. Contractors are responsible for confirming the location of all underground services on site prior to commencing work.
6. All details including civil and structural design have been checked and approved by the Engineer.

ABBREVIATIONS

P PAVING
J JOINTS
E EDGING
K KERBS
C COVERS
D DRAINAGE
L LIGHTING
S STRUCTURES
F FURNITURE
V VEGETATION
T TREES

TK TOP OF KERB
BK BOTTOM OF KERB
TW TOP OF WALL
FS FINISHED SURFACE
FG FINISHED GRADE
TS TOP OF STEP
BS BOTTOM OF STEP
TR TOP OF RAMP
BR BOTTOM OF RAMP
HP HIGH POINT
DI DRAIN INLET

ELECTRONIC DISCLAIMER

Electronic data files are provided by Boffa Miskell Limited subject to the following conditions. By accepting or using electronic data files provided by Boffa Miskell, you acknowledge and agree that:

The purpose for which the files were prepared may differ from the purpose that you intend to use the files, and Boffa Miskell makes no representation that the files are suitable for your intended use;

Boffa Miskell gives no representation as to the accuracy, completeness or correctness of the information in the files. You acknowledge that it is your responsibility to confirm all measurements and data in the files;

The provision of the files does not transfer any copyright or other intellectual property rights in the files or any information contained therein. All references to Boffa Miskell shall be removed if any information in the files is copied or altered in any way; and

To the full extent permitted by law, Boffa Miskell accepts and shall have no liability whatsoever (including in negligence) for any loss, damage or liability arising from the receipt or use of the files.

KEYNOTES

PAVING

NATURAL STONE FINISHES:

A: Type B Basalt - Sawn Finish
B: Type B Basalt - Bush Hammered Finish

P01 STONE PAVING ON PEDESTALS
Natural stone paving on pedestals above podium slab
Refer Detail: -
Refer Specification: TBC

P02 STONE PAVING ON GRADE
Natural stone paving on concrete slab to Civil Engineers confirmation
Refer Detail: -
Refer Specification: TBC

P03 INSITU CONCRETE FOOTPATH
U5E Lightly exposed concrete footpath. Concrete mix to match Hurstmere Green
Refer Detail: -
Refer Specification: TBC

P04 INSITU CONCRETE PARKING BAYS
U5E Lightly exposed concrete parking bays. Concrete mix TBC
Refer Detail: -
Refer Specification: TBC

P05 ASPHALT FOOTPATH
Nom. Mix 10 (City Mix) black asphaltic concrete with brick bands to match existing
Refer Detail: -
Refer Specification: TBC

P06 ASPHALT CARRIAGEWAY
To Civil Engineers Drawings & Specification
Refer Detail: -
Refer Specification: TBC

P07 TIMBER DECKING
Accoya timber decking with non-slip inserts
Refer Detail: -
Refer Specification: TBC

P08 CONCRETE PAVING REINSTATEMENT
Concrete paving reinstated along The Strand
Refer Detail: -
Refer Specification: TBC

P09 STAINLESS STEEL TIGS STUDS
TBC
Refer Detail: -
Refer Specification: TBC

JOINTS

J01 PAVING JOINT
Refer Detail: -
Refer Specification: TBC

J02 SAWCUT
Refer Detail: -
Refer Specification: TBC

EDGES

E01 STAINLESS STEEL EDGING
Stainless steel edging against flush planting
Refer Detail: -
Refer Specification: TBC

KERBS

K01 CONCRETE KERB AND CHANNEL
Refer Detail: -
Refer Specification: TBC

K02 CONCRETE KERB - THE STRAND
Concrete kerb with custom mix to match exiting on The Strand
Refer Detail: -
Refer Specification: TBC

LIGHTING

L01 LIGHT POLE
TBC
Refer Detail: -
Refer Specification: TBC

DRAINAGE

D01 DRAINAGE CHANNEL
ACO slabdrain with heelsafe anti-slip grate
Refer Detail: -
Refer Specification: TBC

D02 CATCHPIT
To Civil Engineer's drawings and specification
Refer Detail: -
Refer Specification: TBC

LINE MARKING

LM01 LINE MARKING TYPE 01
Zebra crossing line marking to raised tables
To Traffic Engineers Drawings & Specification

LM02 LINE MARKING TYPE 02
Line marking to parking bays
To Traffic Engineers Drawings & Specification

STRUCTURES

S01 METAL CLAD PLANTERS
Custom shaped metal clad planters in laneway & private courtyards. Finish to be coordinated with Architectural finishes
Refer Detail: -
Refer Specification: TBC

S02 FREESTANDING METAL PLANTERS
1200 x 500mm freestanding metal planters in internal lane. Finish to be coordinated with Architectural finishes
Refer Detail: -
Refer Specification: TBC

S03 TIMBER BATTEN FENCING & GATES
Accoya timber batten fencing & gates to private courtyards & internal laneway
Refer Detail: -
Refer Specification: TBC

S04 TIMBER BATTEN SHELTER
Accoya timber batten shelters in private courtyards. Structure to be coordinated with Structural Engineer
Refer Detail: -
Refer Specification: TBC

S05 TIMBER BLEACHER
Accoya timber bleacher. Structure to be coordinated with Structural Engineer
Refer Detail: -
Refer Specification: TBC

S06 CONCRETE WALL
Concrete walls with varied width. Finish & mix to match Hurstmere Green
Refer Detail: -
Refer Specification: TBC

S07 CONCRETE STAIRS
Concrete stairs with stainless steel anti-slip inserts and TIGS
Refer Detail: -
Refer Specification: TBC

S08 CONCRETE BLEACHERS
Finish, mix & alignment to match Hurstmere Green bleachers
Refer Detail: -
Refer Specification: TBC

S09 TIMBER BENCH TO CONCRETE BLEACHER
Accoya timber batten bench fixed to top of concrete bleacher
Refer Detail: -
Refer Specification: TBC

FURNITURE

F01 STAINLESS STEEL HANDRAIL
Stainless steel handrail to stairs
Refer Detail: -
Refer Specification: TBC

F02 BIKE RACK
Stainless steel bike rack
Refer Detail: -
Refer Specification: TBC

VEGETATION

V01 EXISTING PLANTING - RETAINED
Refer Specification: TBC

V02 AMENITY PLANTING ON GRADE - PUBLIC
Public domain garden beds on grade including 450mm depth growing media suitable for planting
Refer Detail: -
Refer Specification: TBC

V03 AMENITY PLANTING ON GRADE - PRIVATE
Private area garden beds on grade including 450mm depth growing media suitable for planting.
Refer Detail: -
Refer Specification: TBC

V04 AMENITY PLANTING ON SLAB
Private area garden beds on podium slab including min 450mm depth growing media suitable for planting
Refer Detail: -
Refer Specification: TBC

V05 FREESTANDING PLANTERS
Planting into freestanding planters including min 450mm depth growing media suitable for planting
Refer Detail: -
Refer Specification: TBC

TREES

T01 EXISTING TREE
Existing tree to be retained & protected
Refer Specification: TBC

T02 PROPOSED TREE
Large grade specimen trees in public & private areas
Refer Detail: -
Refer Specification: TBC



Boffa Miskell Limited
Level 3
82 Wyndham Street
Auckland 1010
New Zealand
Tel: +64 9 358 2526
www.boffamiskell.co.nz

NOTES

CONTRACTORS TO VERIFY ALL DIMENSIONS ON SITE PRIOR TO COMMENCING WORK;

CONTRACTORS ARE RESPONSIBLE FOR CONFIRMING THE LOCATION OF ALL UNDERGROUND SERVICES ON SITE PRIOR TO COMMENCING WORK;

FIGURED DIMENSIONS TO BE TAKEN IN PREFERENCE TO SCALED DIMENSIONS.

REV DATE DESCRIPTION
A 10.08.21 PRELIMINARY DESIGN

APr
MHa

CLIENT
HND Developments

CONSULTANTS
Moller Architects

PRELIMINARY DESIGN

HND Takapuna

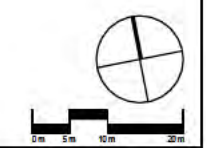
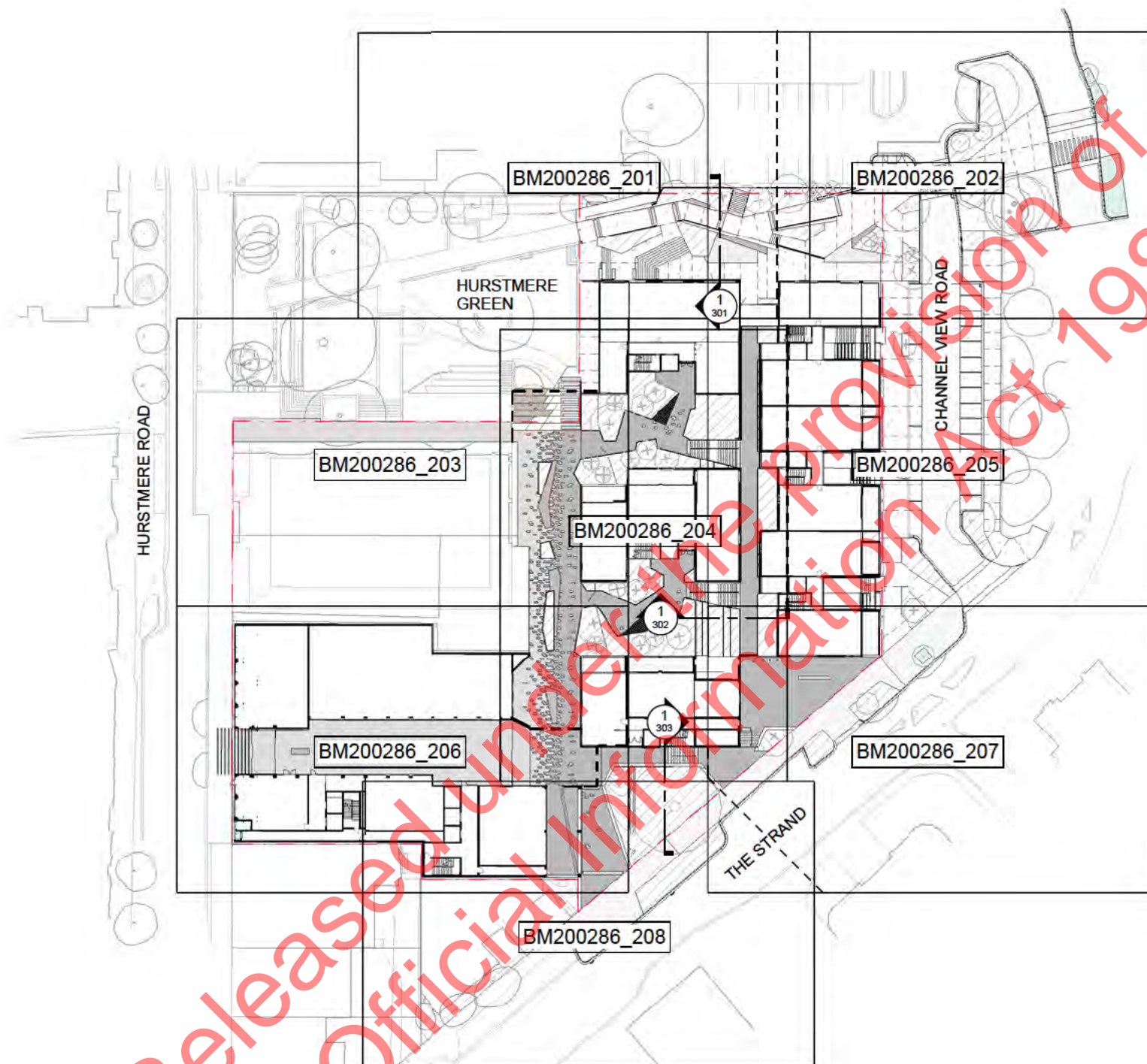
KEY SHEET

Design MHa
Drawn THa
Check DPa
Scale Not To Scale
Date 01.06.2021

DRAWING NO. REVISION

BM200828_130

A



ORIGINAL IN COLOUR



Printed 10/08/2021 7:55:12 PM

Boffa Miskell Limited
Level 3
82 Wyndham Street
Auckland 1010
New Zealand
Tel: +64 9 358 2526
www.boffamiskell.co.nz

NOTES
CONTRACTORS TO VERIFY ALL DIMENSIONS ON SITE PRIOR TO COMMENCING WORK;
CONTRACTORS ARE RESPONSIBLE FOR CONFIRMING THE LOCATION OF ALL UNDERGROUND SERVICES ON SITE PRIOR TO COMMENCING WORK;
FIGURED DIMENSIONS TO BE TAKEN IN PREFERENCE TO SCALED DIMENSIONS.

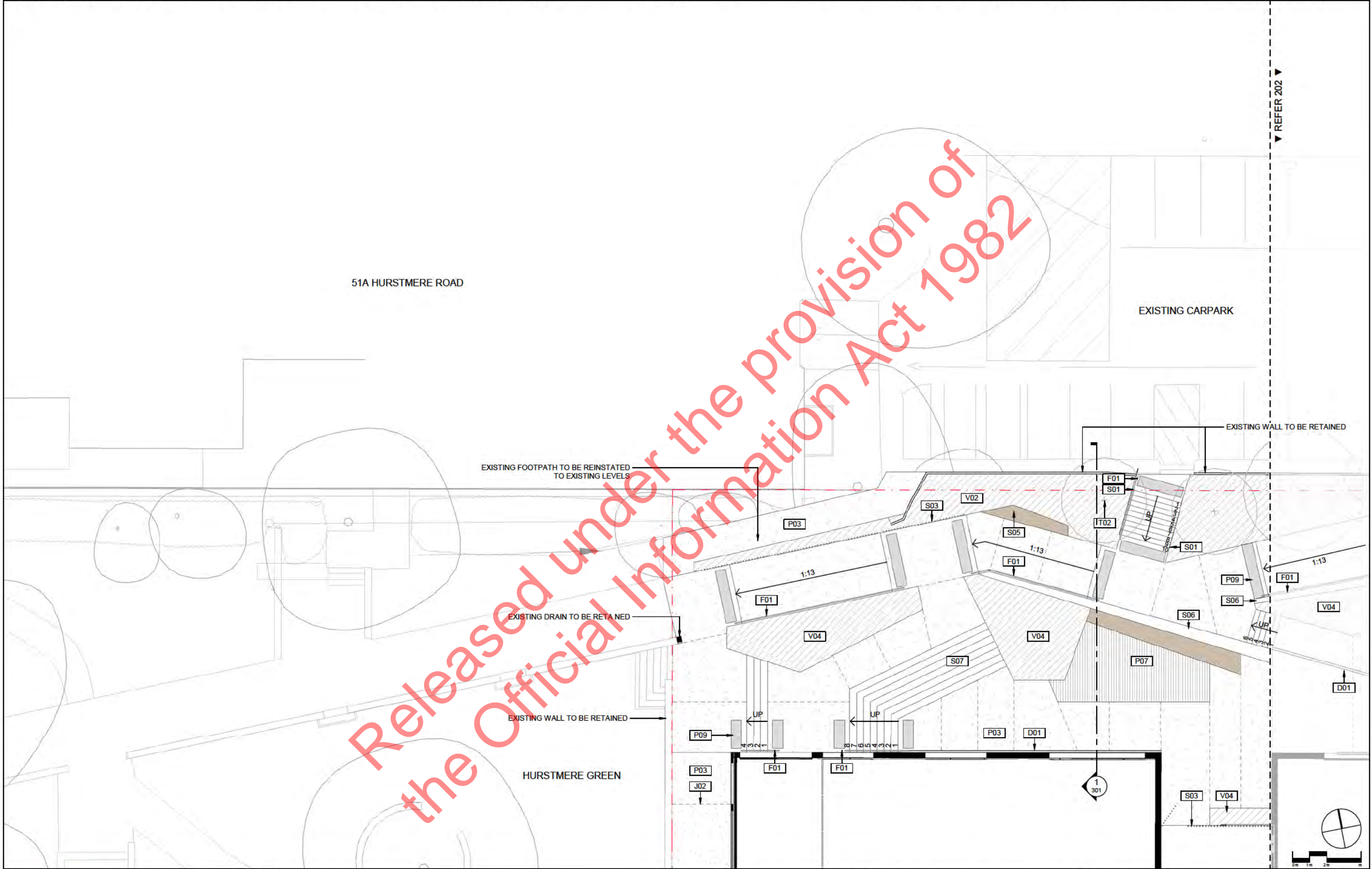
REV	DATE	DESCRIPTION
A	10.08.21	PRELIMINARY DESIGN

CLIENT	HND Developments
CONSULTANTS	Motter Architects
APr	MHa
MHa	
PRELIMINARY DESIGN	

HND Takapuna
GENERAL ARRANGEMENT
LOCATION PLAN

Design	MHa	Scale	Date
Drawn	MPo	1:500 @ A1	01.06.2021
Check	DPa	1:1000 @ A3	
DRAWING NO.	REVISION		
BM200828_200	A		

C:\Users\davepi\Documents\Revit_Local_Models\BM200828_HNDTakapuna_LA_BM_01_NZTM_R21_dave.parker\22WRP.rvt



ORIGINAL IN COLOUR



Printed 10/08/2021 5:39:59 PM

Boffa Miskell Limited
Level 3
82 Wyndham Street
Auckland 1010
New Zealand
Tel: +64 9 358 2526
www.boffamiskell.co.nz

NOTES
CONTRACTORS TO VERIFY ALL DIMENSIONS ON SITE PRIOR TO COMMENCING WORK;
CONTRACTORS ARE RESPONSIBLE FOR CONFIRMING THE LOCATION OF ALL UNDERGROUND SERVICES ON SITE PRIOR TO COMMENCING WORK;
FIGURED DIMENSIONS TO BE TAKEN IN PREFERENCE TO SCALED DIMENSIONS.

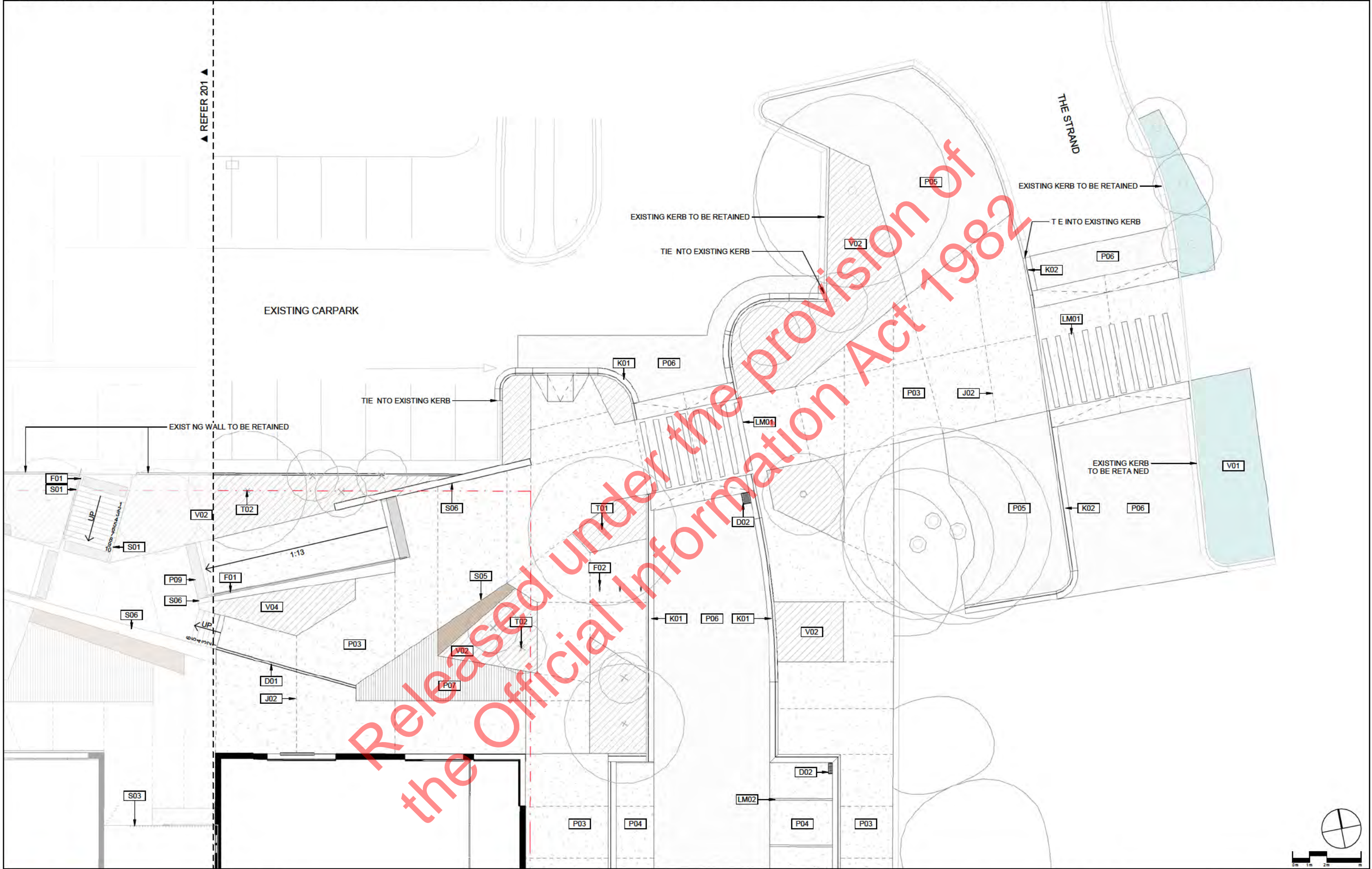
REV	DATE	DESCRIPTION
A	10.08.21	PRELIMINARY DESIGN

CLIENT	HND Developments
CONSULTANTS	Moller Architects
APR	MHa
MPo	
DPa	
PRELIMINARY DESIGN	

HND Takapuna
GENERAL ARRANGEMENT
SHEET 01

Design	MHa	Scale	1:100 @ A1	Date	01.06.2021
Drawn	MPo	Check	1:200 @ A3		
DRAWING NO.				REVISION	
BM200828_201				A	

C:\Users\davep\Documents\Revit_Local_Models\BM200828_HNDTakapuna_LA_BM_01_NZTM_R21_dave.parker\22WRP.rvt



ORIGINAL IN COLOUR



Printed 10/05/2021 6:07:47 PM

Boffa Miskell Limited
Level 3
82 Wyndham Street
Auckland 1010
New Zealand
Tel: +64 9 358 2526
www.boffamiskell.co.nz

NOTES
CONTRACTORS TO VERIFY ALL DIMENSIONS ON SITE PRIOR TO COMMENCING WORK;
CONTRACTORS ARE RESPONSIBLE FOR CONFIRMING THE LOCATION OF ALL UNDERGROUND SERVICES ON SITE PRIOR TO COMMENCING WORK;
FIGURED DIMENSIONS TO BE TAKEN IN PREFERENCE TO SCALED DIMENSIONS.

REV DATE
A 10.08.21
DESCRIPTION
PRELIMINARY DESIGN

CLIENT
HND Developments
CONSULTANTS
Moller Architects
PRELIMINARY DESIGN

HND Takapuna
GENERAL ARRANGEMENT
SHEET 02

Design	MHa	Scale	1:100 @ A1	Date	01.06.2021
Drawn	MPo	Check	1:200 @ A3		
DRAWING NO.				REVISION	
BM200828_202				A	

C:\Users\davep\Documents\Revit_Local_Models\BM200828_HNDTakapuna_LA_BM_01_NZTM_R21_dave.parker\ZWRP.rvt



ORIGINAL IN COLOUR



Printed 10/08/2021 6:27:02 PM

Boffa Miskell Limited
Level 3
82 Wyndham Street
Auckland 1010
New Zealand
Tel: +64 9 358 2526
www.boffamiskell.co.nz

NOTES

CONTRACTORS TO VERIFY ALL DIMENSIONS ON SITE PRIOR TO COMMENCING WORK;

CONTRACTORS ARE RESPONSIBLE FOR CONFIRMING THE LOCATION OF ALL UNDERGROUND SERVICES ON SITE PRIOR TO COMMENCING WORK;

FIGURED DIMENSIONS TO BE TAKEN IN PREFERENCE TO SCALED DIMENSIONS.

REV	DATE	DESCRIPTION
A	10.08.21	PRELIMINARY DESIGN

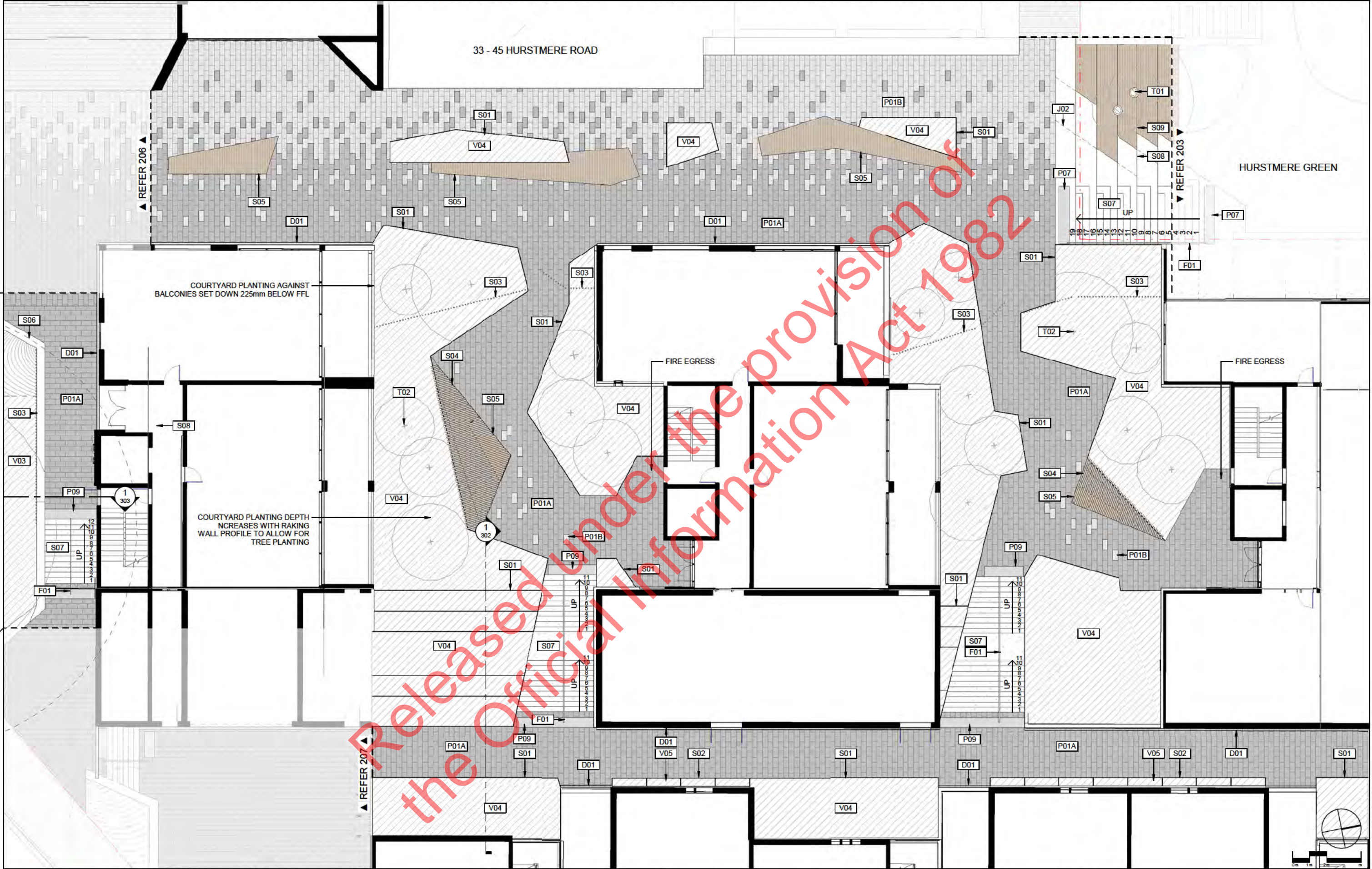
CLIENT	HND Developments
CONSULTANTS	Moller Architects
APr	MHa
MPo	DPa
Check	
PRELIMINARY DESIGN	

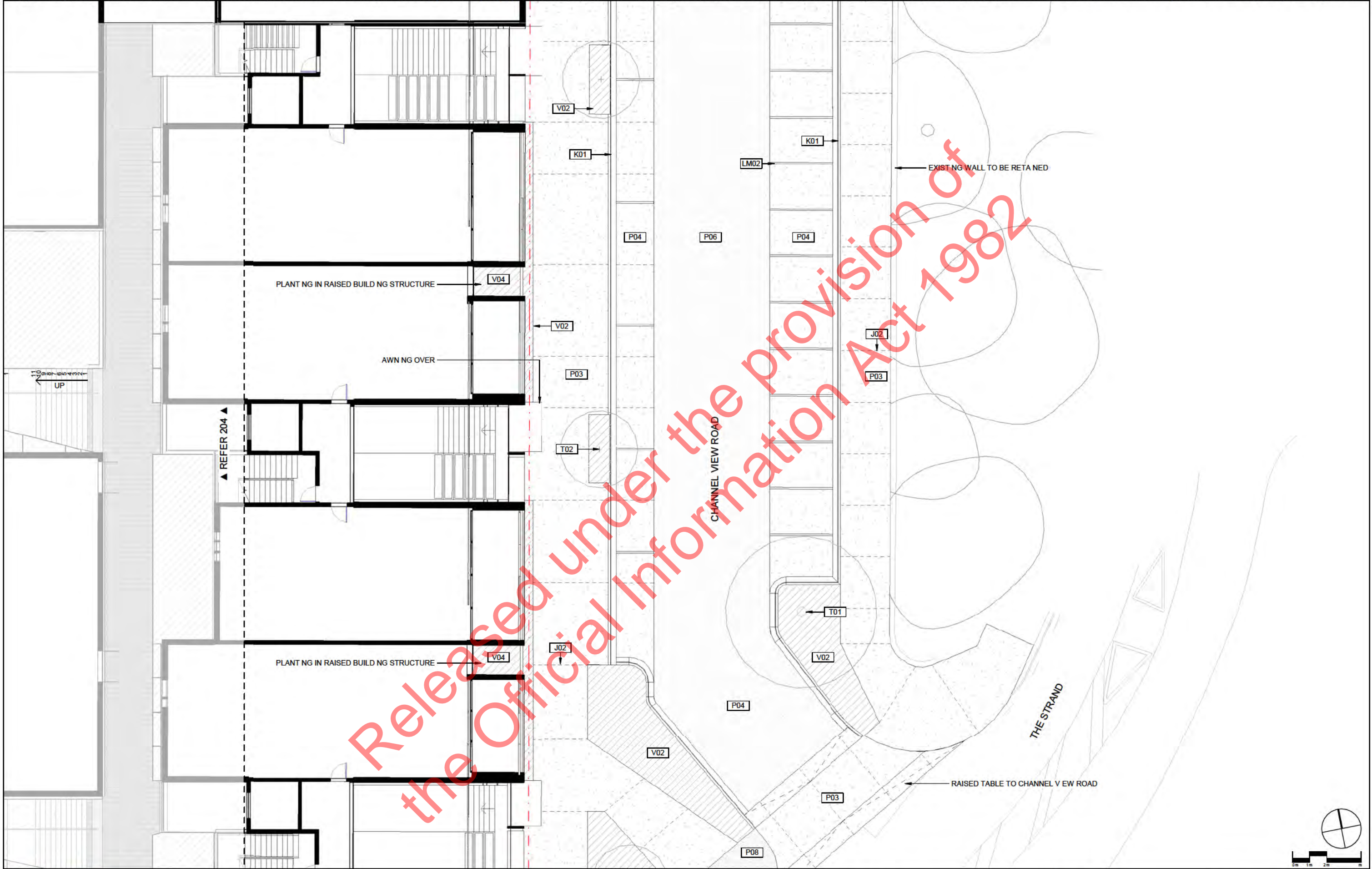
HND Takapuna

GENERAL ARRANGEMENT
SHEET 03

Design	MHa	Scale	Date
Drawn	MPo	1:100 @ A1	01.06.2021
Check	DPa	1:200 @ A3	
DRAWING NO.	REVISION		
BM200828_203	A		

C:\Users\davepi\Documents\Revit_Local_Models\BM200828_HNDTakapuna_LA_BM_01_NZTM_R21_dave.parker\22WRP.rvt





ORIGINAL IN COLOUR

Boffa Miskell

Printed 10/05/2021 7:43:35 PM

Boffa Miskell Limited
Level 3
82 Wyndham Street
Auckland 1010
New Zealand
Tel: +64 9 358 2526
www.boffamiskell.co.nz

NOTES

CONTRACTORS TO VERIFY ALL DIMENSIONS ON SITE PRIOR TO COMMENCING WORK;

CONTRACTORS ARE RESPONSIBLE FOR CONFIRMING THE LOCATION OF ALL UNDERGROUND SERVICES ON SITE PRIOR TO COMMENCING WORK;

FIGURED DIMENSIONS TO BE TAKEN IN PREFERENCE TO SCALED DIMENSIONS.

REV	DATE	DESCRIPTION
A	10.08.21	PRELIMINARY DESIGN

APR
MHa

CLIENT
HND Developments

CONSULTANTS
Moller Architects

PRELIMINARY DESIGN

HND Takapuna

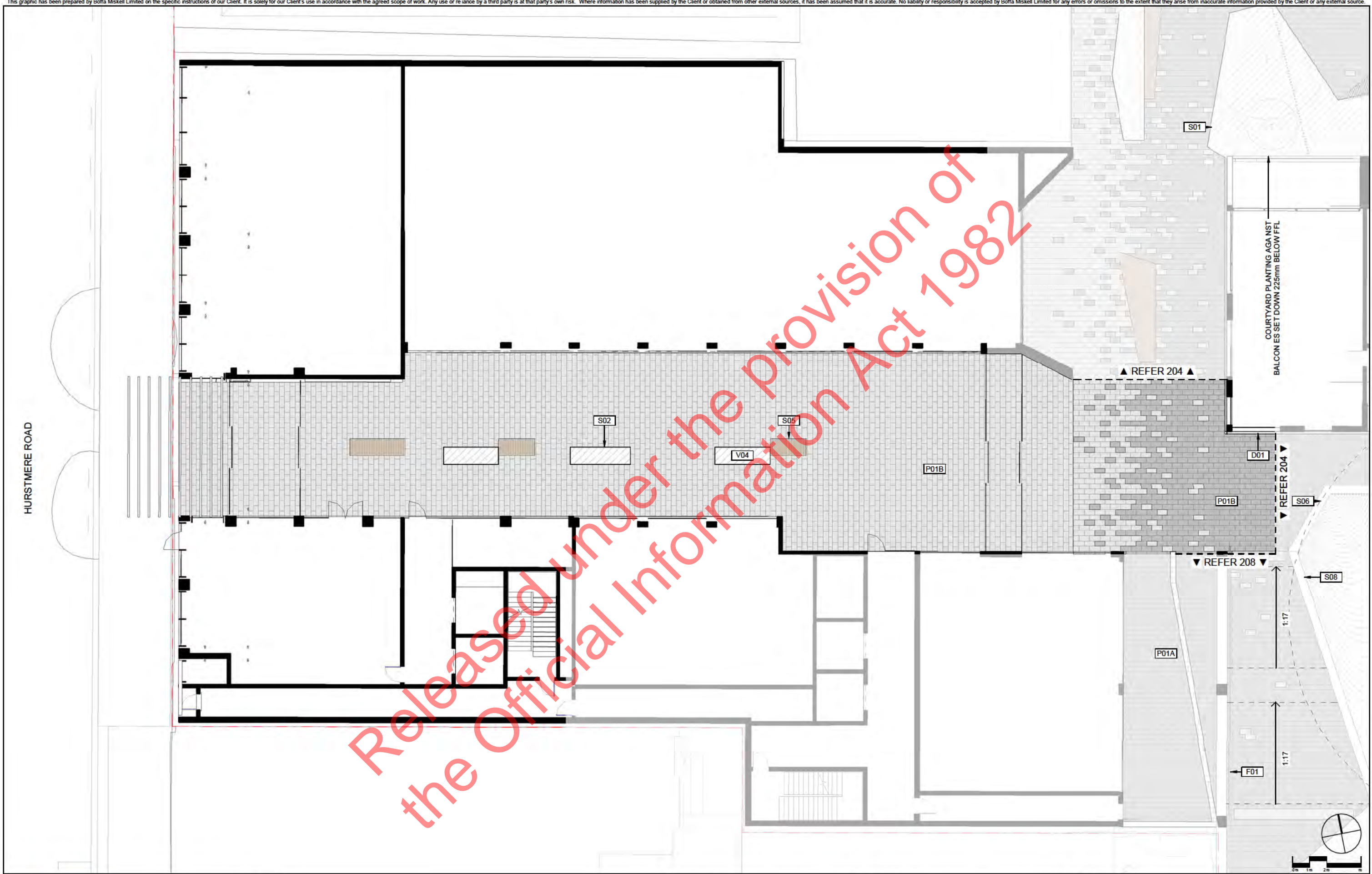
GENERAL ARRANGEMENT
SHEET 05

Design	MHa	Scale	Date
Drawn	THe	1:100 @ A1	01.06.2021
Check	DPa	1:200 @ A3	

DRAWING NO.
BM200828_205

REVISION
(A)

C:\Users\davepi\Documents\Revit_Local_Models\BM200828_HNDTakapuna_LA_BM_01_NZTM_R21_dave.parker\ZWRP.rvt



ORIGINAL IN COLOUR



Printed 10/08/2021 7:47:55 PM

Boffa Miskell Limited
Level 3
82 Wyndham Street
Auckland 1010
New Zealand
Tel: +64 9 358 2526
www.boffamiskell.co.nz

NOTES
CONTRACTORS TO VERIFY ALL DIMENSIONS ON SITE PRIOR TO COMMENCING WORK;
CONTRACTORS ARE RESPONSIBLE FOR CONFIRMING THE LOCATION OF ALL UNDERGROUND SERVICES ON SITE PRIOR TO COMMENCING WORK;
FIGURED DIMENSIONS TO BE TAKEN IN PREFERENCE TO SCALED DIMENSIONS.

REV	DATE	DESCRIPTION
A	10.08.21	PRELIMINARY DESIGN

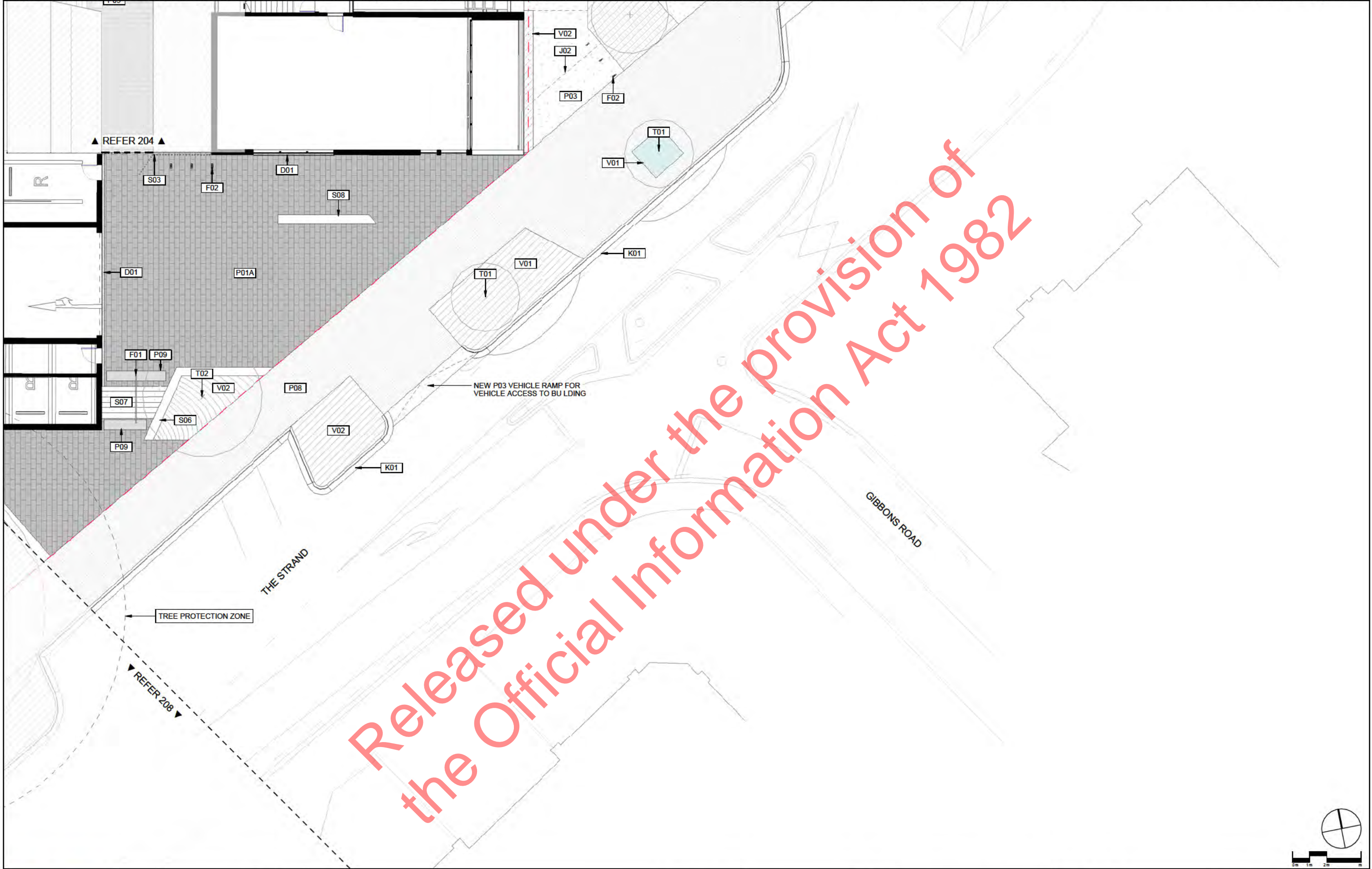
CLIENT	HND Developments
CONSULTANTS	Moller Architects
APR	MHa
PRELIMINARY DESIGN	

HND Takapuna

GENERAL ARRANGEMENT
SHEET 06

Design	MHa	Scale	1:100 @ A1	Date	01.06.2021
Drawn	THe	Check	DPa	1:200 @ A3	
DRAWING NO.				REVISION	
BM200828_206				(A)	

C:\Users\davep\Documents\Revit_Local_Models\BM200828_HNDTakapuna_LA_BM_01_NZTM_R21_dave.parker\20WRP.rvt



ORIGINAL IN COLOUR



Printed 10/05/2021 7:49:46 pm

Boffa Miskell Limited
Level 3
82 Wyndham Street
Auckland 1010
New Zealand
Tel: +64 9 358 2526
www.boffamiskell.co.nz

NOTES
CONTRACTORS TO VERIFY ALL DIMENSIONS ON SITE PRIOR TO COMMENCING WORK;
CONTRACTORS ARE RESPONSIBLE FOR CONFIRMING THE LOCATION OF ALL UNDERGROUND SERVICES ON SITE PRIOR TO COMMENCING WORK;
FIGURED DIMENSIONS TO BE TAKEN IN PREFERENCE TO SCALED DIMENSIONS.

REV	DATE	DESCRIPTION
A	10.08.21	PRELIMINARY DESIGN

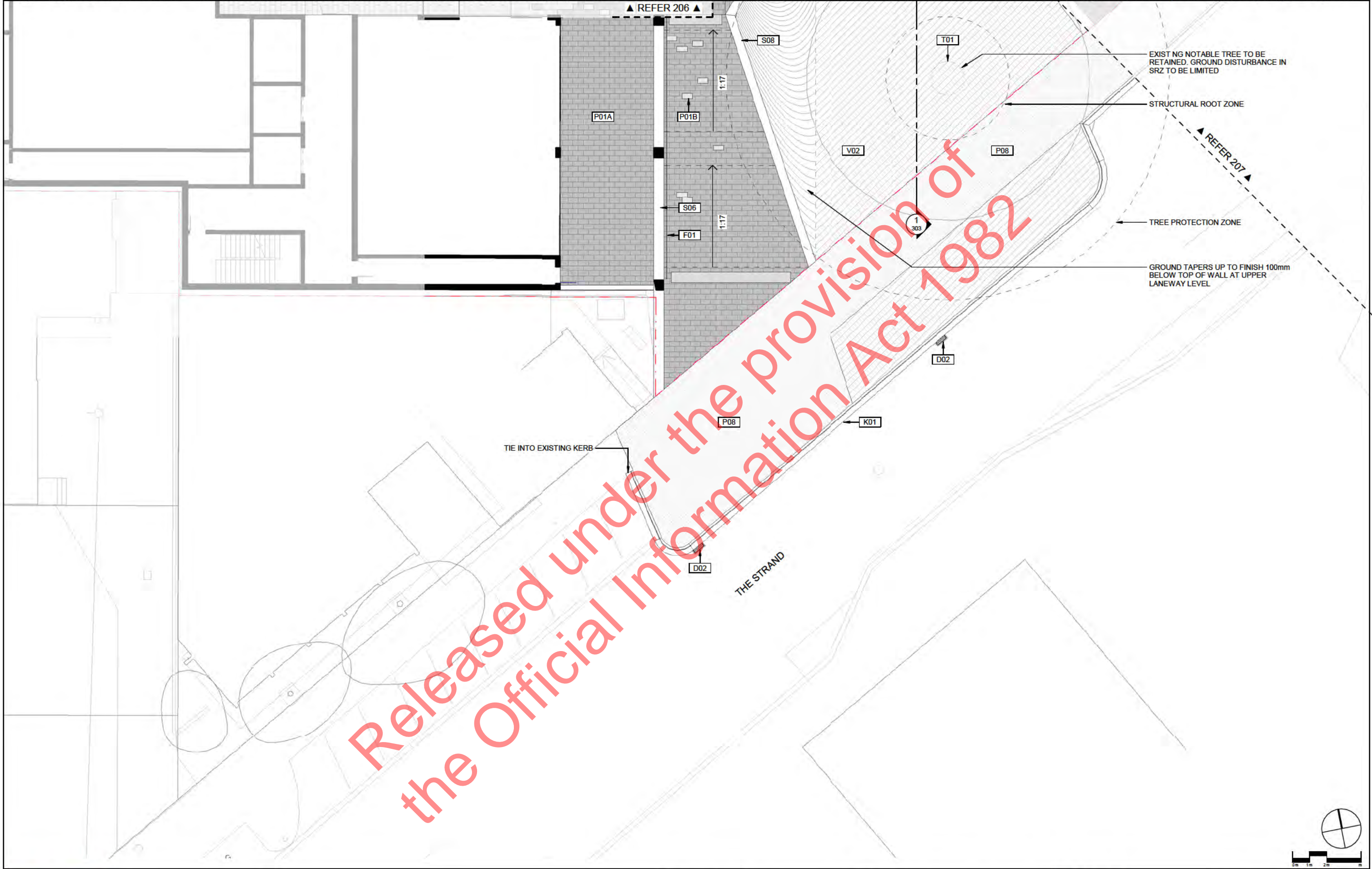
CLIENT	HND Developments
CONSULTANTS	Moller Architects
APR	MHa
PRELIMINARY DESIGN	


HND Takapuna
GENERAL ARRANGEMENT
SHEET 07

Design	MHa	Scale	1:100 @ A1	Date	01.06.2021
Drawn	THa	Check	1:200 @ A3		
DRAWING NO.	BM200828_207	REVISION	A		

C:\Users\lombi\Documents\Revit_Local_Models\BM200828_HNDTakapuna_LA_BM_01_NZTM_R21_tom.heml.rvt

This graphic has been prepared by Boffa Miskell Limited on the specific instructions of our Client. It is solely for our Client's use in accordance with the agreed scope of work. Any use or reliance by a third party is at that party's own risk. Where information has been supplied by the Client or obtained from other external sources, it has been assumed that it is accurate. No liability or responsibility is accepted by Boffa Miskell Limited for any errors or omissions to the extent that they arise from inaccurate information provided by the Client or any external source.





Boffa Miskell Limited
Level 3
82 Wyndham Street
Auckland 1010
New Zealand
Tel: +64 9 358 2526
www.boffamiskell.co.nz

NOTES

CONTRACTORS TO VERIFY ALL DIMENSIONS ON SITE PRIOR TO COMMENCING WORK;

CONTRACTORS ARE RESPONSIBLE FOR CONFIRMING THE LOCATION OF ALL UNDERGROUND SERVICES ON SITE PRIOR TO COMMENCING WORK;

FIGURED DIMENSIONS TO BE TAKEN IN PREFERENCE TO SCALED DIMENSIONS.

REV	DATE	DESCRIPTION
A	10.06.21	PRELIMINARY DESIGN

APR
MHa

CLIENT
HND Developments

CONSULTANTS
Moller Architects

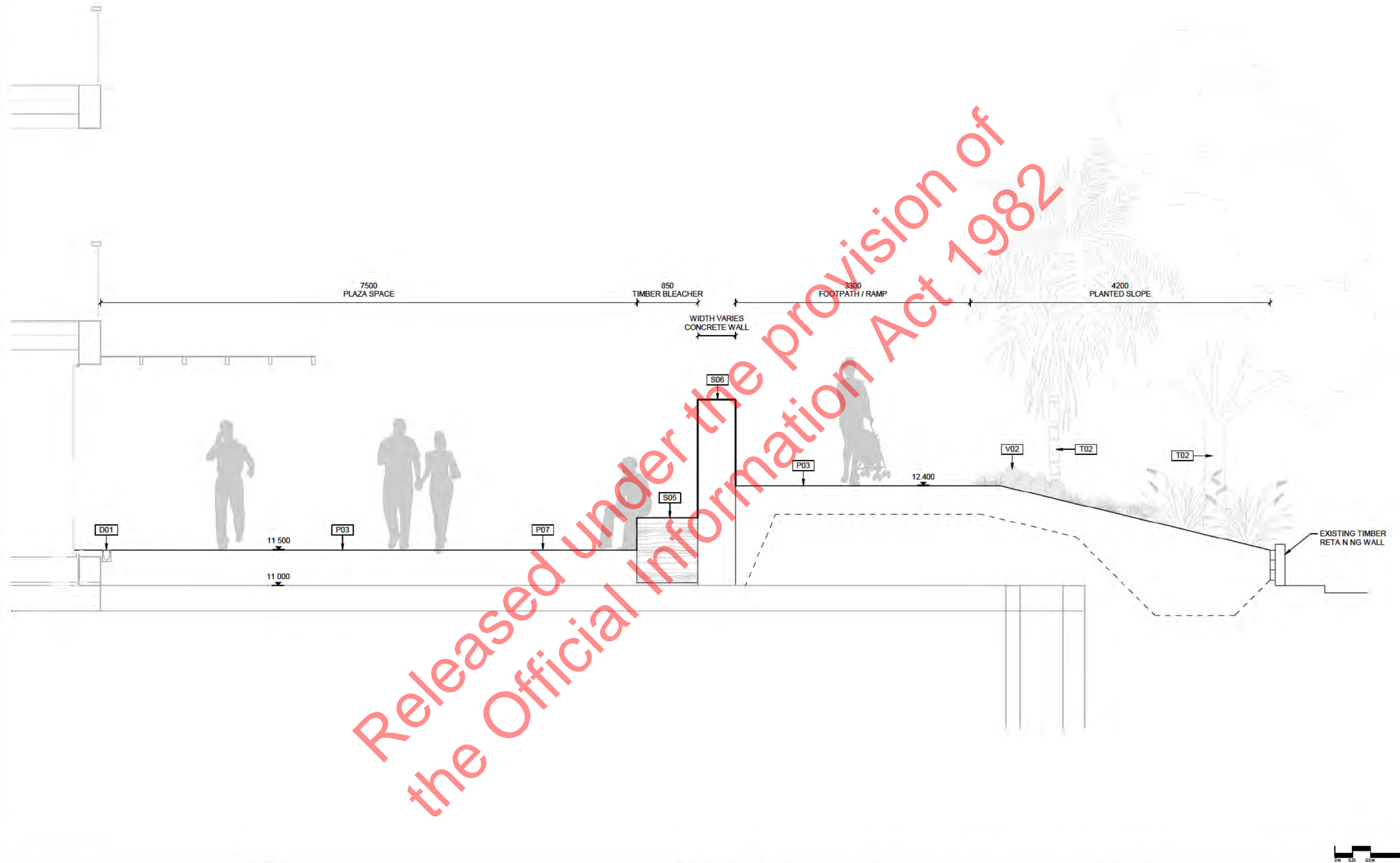
PRELIMINARY DESIGN

HND Takapuna

GENERAL ARRANGEMENT
SHEET 08

Design	MHa	Scale	Date
Drawn	THa	1:100 @ A1	01.06.2021
Check	DPa	1:200 @ A3	
DRAWING NO.		REVISION	
BM200828_208		A	

C:\Users\lsm\Documents\Revit_Local_Models\BM200828_HNDTakapuna_LA_BM_01_NZTM_R21_10m.heml.rvt



ORIGINAL IN COLOUR



Printed 10/08/2021 17:50:39 PM

Boffa Miskell Limited
Level 3
82 Wyndham Street
Auckland 1010
New Zealand
Tel: +64 9 358 2526
www.boffamiskell.co.nz

NOTES

CONTRACTORS TO VERIFY ALL DIMENSIONS ON SITE
PRIOR TO COMMENCING WORK;

CONTRACTORS ARE RESPONSIBLE FOR CONFIRMING
THE LOCATION OF ALL UNDERGROUND SERVICES ON
SITE PRIOR TO COMMENCING WORK;

FIGURED DIMENSIONS TO BE TAKEN IN PREFERENCE
TO SCALED DIMENSIONS.

REV	DATE	DESCRIPTION
A	10.08.21	PRELIMINARY DESIGN

APR
MHa

CLIENT
HND Developments

CONSULTANTS
Moller Architects

PRELIMINARY DESIGN

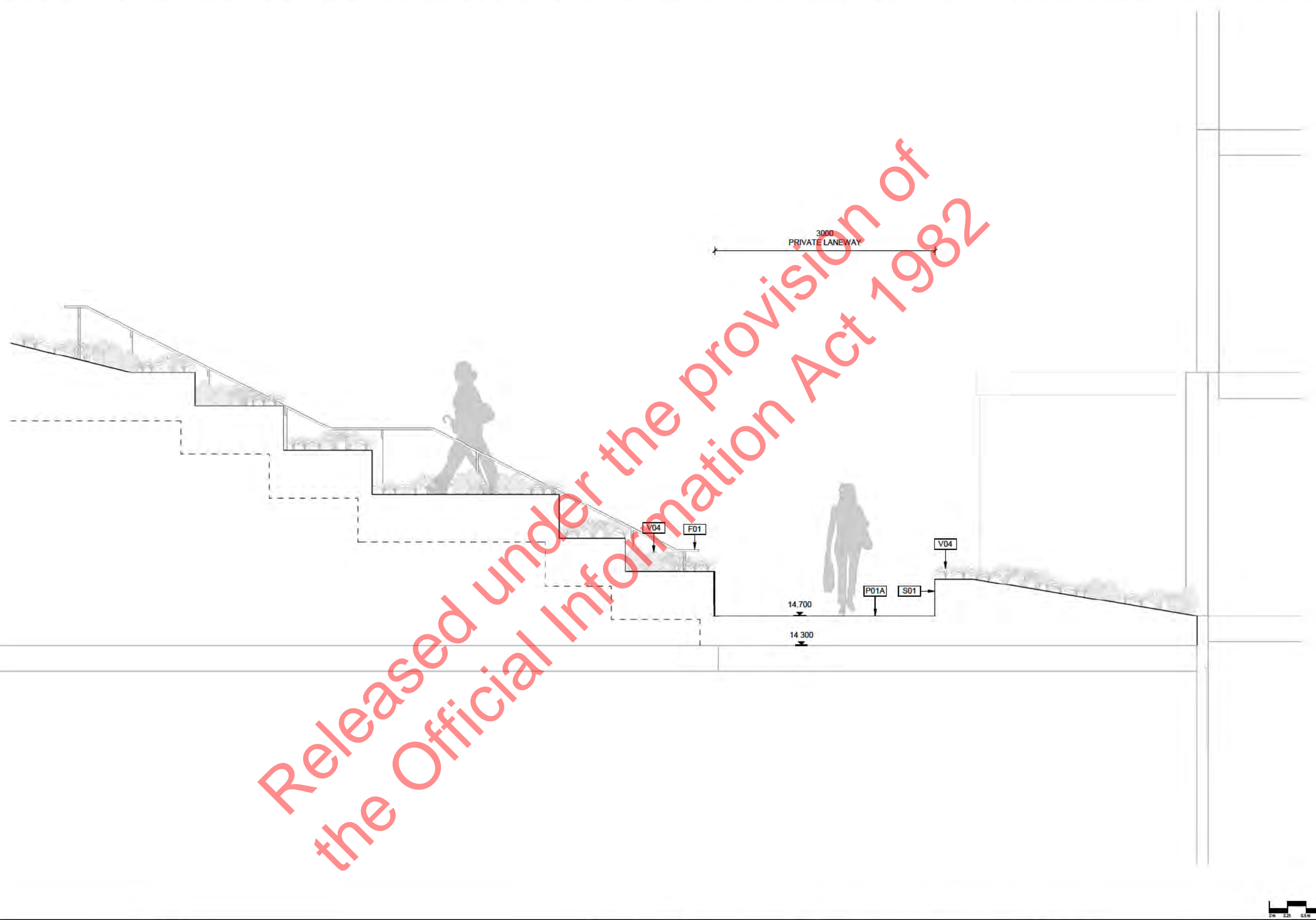
HND Takapuna

COMPOSITE SECTIONS
SHEET 01

Design	MHa	Scale	Date
Drawn	THa	1:25 @ A1	01.06.2021
Check	DPa	1:50 @ A3	

DRAWING NO.	REVISION
BM200828_301	(A)

C:\Users\davepi\Documents\Revit_Local_Models\BM200828_HNDTakapuna_LA_BM_01_NZTM_R21_dave.parker\22WRP.rvt



ORIGINAL IN COLOUR



Printed 10/08/2021 7:53:25 PM

Boffa Miskell Limited
Level 3
82 Wyndham Street
Auckland 1010
New Zealand
Tel: +64 9 358 2526
www.boffamiskell.co.nz

NOTES
CONTRACTORS TO VERIFY ALL DIMENSIONS ON SITE PRIOR TO COMMENCING WORK;
CONTRACTORS ARE RESPONSIBLE FOR CONFIRMING THE LOCATION OF ALL UNDERGROUND SERVICES ON SITE PRIOR TO COMMENCING WORK;
FIGURED DIMENSIONS TO BE TAKEN IN PREFERENCE TO SCALED DIMENSIONS.

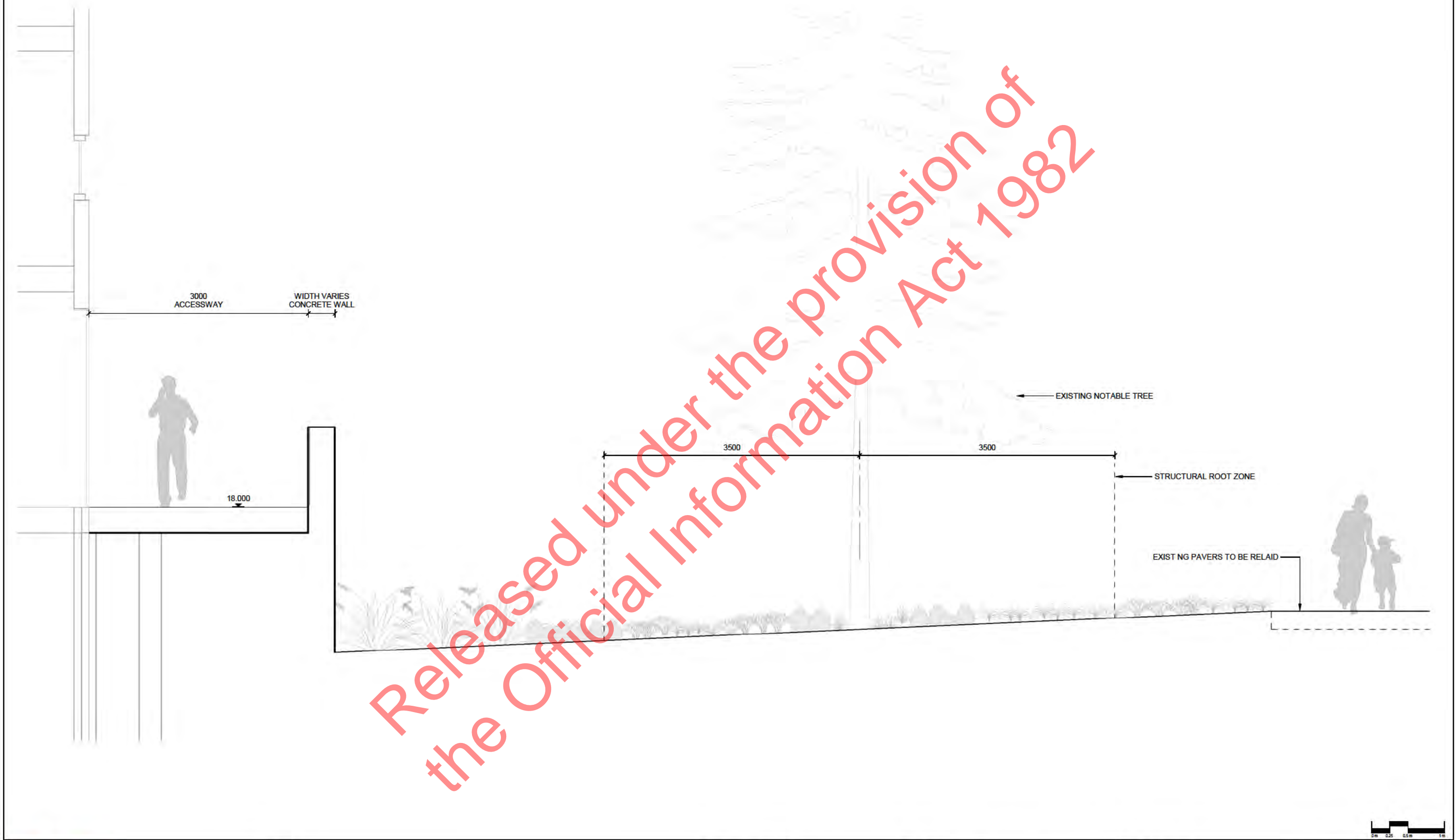
REV	DATE	DESCRIPTION
A	10.08.21	PRELIMINARY DESIGN

CLIENT	HND Developments
CONSULTANTS	Moller Architects
APR	MHa
PRELIMINARY DESIGN	

HND Takapuna
COMPOSITE SECTIONS
SHEET 02

Design	MHa	Scale	1:25 @ A1	Date	01.06.2021
Drawn	THa	Check	1:50 @ A3		
DRAWING NO.				REVISION	
BM200828_302				A	

C:\Users\davepi\Documents\Revit_Local_Models\BM200828_HNDTakapuna_LA_BM_01_NZTM_R21_dave.parker\22WRP.rvt



ORIGINAL IN COLOUR



Printed 10/08/2021 7:53:56 PM

Boffa Miskell Limited
Level 3
82 Wyndham Street
Auckland 1010
New Zealand
Tel: +64 9 358 2526
www.boffamiskell.co.nz

NOTES

CONTRACTORS TO VERIFY ALL DIMENSIONS ON SITE
PRIOR TO COMMENCING WORK;

CONTRACTORS ARE RESPONSIBLE FOR CONFIRMING
THE LOCATION OF ALL UNDERGROUND SERVICES ON
SITE PRIOR TO COMMENCING WORK;

FIGURED DIMENSIONS TO BE TAKEN IN PREFERENCE
TO SCALED DIMENSIONS.

REV	DATE	DESCRIPTION
A	10.08.21	PRELIMINARY DESIGN

APR
MHa

CLIENT
HND Developments

CONSULTANTS
Moller Architects

PRELIMINARY DESIGN

HND Takapuna

COMPOSITE SECTIONS
SHEET 03

Design	MHa	Scale	Date
Drawn	THe	1:25 @ A1	01.06.2021
Check	DPa	1:50 @ A3	

DRAWING NO.	REVISION
BM200828_303	(A)

C:\Users\davepi\Documents\Revit_Local_Models\BM200828_HNDTakapuna_LA_BM_01_NZTM_R21_dave.parker\22WRP.rvt

Released under the provision of
the Official Information Act 1982

About Boffa Miskell

Boffa Miskell is a leading New Zealand professional services consultancy with offices in Auckland, Hamilton, Tauranga, Wellington, Christchurch, Dunedin and Queenstown. We work with a wide range of local and international private and public sector clients in the areas of planning, urban design, landscape architecture, landscape planning, ecology, biosecurity, cultural heritage, graphics and mapping. Over the past four decades we have built a reputation for professionalism, innovation and excellence. During this time we have been associated with a significant number of projects that have shaped New Zealand's environment.

www.boffamiskell.co.nz

Auckland	Hamilton	Tauranga	Wellington	Christchurch	Queenstown	Dunedin
09 358 2526	07 960 0006	07 571 5511	04 385 9315	03 366 8891	03 441 1670	03 470 0460