

D18. Special Character Areas Overlay – Residential and Business

PC 78 (see
Modifications)

[new text to be inserted]

D18.1. Background

The Special Character Areas Overlay – Residential and Business seeks to retain and manage the special character values of specific residential and business areas identified as having collective and cohesive values, importance, relevance and interest to the communities within the locality and wider Auckland region.

PC 78 (see
Modifications)

Each special character area is supported by a Special character area statement identifying the key special character values of the area. Assessment of proposals for development and modifications to buildings within special character areas will be considered against the relevant policies and the special character area statements and the special character values that are identified in those statements. These values set out and identify the overall notable or distinctive aesthetic, physical and visual qualities of the area and community associations.

Standards have been placed on the use, development and demolition of buildings to manage change in these areas.

Special character areas are provided for as follows:

- (1) Special Character Areas - Business; and
- (2) Special Character Areas – Residential; and
- (3) Special Character Areas - General (both residential and business).

Areas in the Special Character Areas Overlay - General may contain a mix of sites zoned residential or business. In such cases, for any site/s in a residential zone, the Special Character Areas Overlay - Residential provisions will apply and for any site/s in a business zone, the Special Character Areas Overlay - Business provisions will apply.

The following areas are identified as special character areas:

Special Character Areas Overlay - Residential	Special Character Areas Overlay - Business	Special Character Areas Overlay – General (both Residential and Business)
Special Character Areas Overlay – Residential : Balmoral Tram Suburb, West	Special Character Areas Overlay – Business : Howick	Special Character Areas Overlay – General : Balmoral Tram Suburb, East
Special Character Areas Overlay – Residential : Helensville	Special Character Areas Overlay – Business : Balmoral Shopping Centre	Special Character Areas Overlay – General : Foch Avenue and Haig Avenue
Special Character Areas Overlay – Residential : North Shore – Birkenhead Point	Special Character Areas Overlay – Business : Eden Valley	Special Character Areas Overlay – General : Hill Park

PC 78 (see
Modifications)

D18 Special Character Areas Overlay – Residential and Business

Special Character Areas Overlay - Residential	Special Character Areas Overlay - Business	Special Character Areas Overlay – General (both Residential and Business)
Special Character Areas Overlay – Residential : North Shore – Devonport and Stanley Point	Special Character Areas Overlay – Business : Ellerslie	Special Character Areas Overlay – General : Puhoi
Special Character Areas Overlay – Residential : North Shore – Northcote Point	Special Character Areas Overlay – Business : Grey Lynn	[new text to be inserted]
Special Character Areas Overlay – Residential : Early Road Links	Special Character Areas Overlay – Business : Helensville Central	[new text to be inserted]
Special Character Areas Overlay – Residential : Kings Road and Princes Avenue	Special Character Areas Overlay – Business : Kingsland	[new text to be inserted]
Special Character Areas Overlay – Residential : Isthmus A	Special Character Areas Overlay – Business : Lower Hinemoa Street	
Special Character Areas Overlay – Residential : Isthmus B - Remuera	Special Character Areas Overlay – Business : Devonport	
Special Character Areas Overlay – Residential : Isthmus B – Remuera / Meadowbank	Special Character Areas Overlay – Business : Mt Eden Village	
Special Character Areas Overlay – Residential : Isthmus B – Mission Bay	Special Character Areas Overlay – Business : Newmarket	
Special Character Areas Overlay – Residential : Isthmus B – St Heliers	Special Character Areas Overlay – Business : Parnell	
Special Character Areas Overlay – Residential : Isthmus B – Herne Bay	Special Character Areas Overlay – Business : Ponsonby Road	
Special Character Areas Overlay – Residential : Isthmus B - Parnell	Special Character Areas Overlay – Business : Sandringham	
Special Character Areas Overlay – Residential : Isthmus B - Epsom	Special Character Areas Overlay – Business : Upper Symonds Street	

PC 78 (see [Modifications](#))

PC 78 (see [Modifications](#))

D18 Special Character Areas Overlay – Residential and Business

PC 78 (see
Modifications)

Special Character Areas Overlay - Residential	Special Character Areas Overlay - Business	Special Character Areas Overlay – General (both Residential and Business)
Special Character Areas Overlay – Residential : Isthmus B – Epsom/Greenlane	Special Character Areas Overlay – Business : West Lynn	
Special Character Areas Overlay – Residential : Isthmus B – Mount Eden/Epsom (Part A)	Special Character Areas Overlay – Business : Onehunga	
Special Character Areas Overlay – Residential : Isthmus B – Mount Eden/Epsom (Part B)	Special Character Areas Overlay – Business : Otahuhu	
Special Character Areas Overlay – Residential : Isthmus B - Mount Albert		
Special Character Areas Overlay – Residential : Isthmus B - Mount Roskill		
Special Character Areas Overlay – Residential : Isthmus B - Otahuhu		
Special Character Areas Overlay – Residential : Isthmus C : St Heliers		
Special Character Areas Overlay – Residential : Isthmus C - Mount Eden		
Special Character Areas Overlay – Residential : Isthmus C -Three Kings		
Special Character Areas Overlay – Residential : Isthmus C - Mount Albert		
Special Character Areas Overlay – Residential : Isthmus C – Remuera/Epsom		
Special Character Areas Overlay – Residential : Station Road, Papatoetoe		

D18 Special Character Areas Overlay – Residential and Business

Special Character Areas Overlay - Residential	Special Character Areas Overlay - Business	Special Character Areas Overlay – General (both Residential and Business)
Special Character Areas Overlay – Residential : Pukehana Avenue		

The special character area statements are located in [Schedule 15 Special Character Schedule, Statements and Maps](#).

PC 78 (see [Modifications](#))

The maps for the following special character areas are located in [Schedule 15 Special Character Schedule, Statements and Maps](#):

Special Character Areas Overlay - Residential	Special Character Areas Overlay - Business	Special Character Areas Overlay – General (both Residential and Business)
Special Character Areas Overlay – Residential : Balmoral Tram Suburb, West	Special Character Areas Overlay – Business : Balmoral Shopping Centre	Special Character Areas Overlay – General : Balmoral Tram Suburb, East
Special Character Areas Overlay – Residential : Helensville	Special Character Areas Overlay – Business : Eden Valley	Special Character Areas Overlay – General : Foch Avenue and Haig Avenue
Special Character Areas Overlay – Residential : North Shore – Birkenhead Point	Special Character Areas Overlay – Business : Ellerslie	
Special Character Areas Overlay – Residential : North Shore – Devonport and Stanley Point	Special Character Areas Overlay – Business : Grey Lynn	
Special Character Areas Overlay – Residential : North Shore – Northcote Point	Special Character Areas Overlay – Business : Helensville Central	
Special Character Areas Overlay – Residential : Early Road Links	Special Character Areas Overlay – Business : Kingsland	
Special Character Areas Overlay – Residential : Kings Road and Princes Avenue	Special Character Areas Overlay – Business : Lower Hinemoa Street	
Special Character Areas Overlay – Residential : Isthmus B - Remuera	Special Character Areas Overlay – Business : Devonport	

D18 Special Character Areas Overlay – Residential and Business

Special Character Areas Overlay - Residential	Special Character Areas Overlay - Business	Special Character Areas Overlay – General (both Residential and Business)
Special Character Areas Overlay – Residential : Isthmus B – Remuera / Meadowbank	Special Character Areas Overlay – Business : Mt Eden Village	
Special Character Areas Overlay – Residential : Isthmus B – Mission Bay	Special Character Areas Overlay – Business : Newmarket	
Special Character Areas Overlay – Residential : Isthmus B – St Heliers	Special Character Areas Overlay – Business : Parnell	
Special Character Areas Overlay – Residential : Isthmus B – Herne Bay	Special Character Areas Overlay – Business : Ponsonby Road	
Special Character Areas Overlay – Residential : Isthmus B - Parnell	Special Character Areas Overlay – Business : Sandringham	
Special Character Areas Overlay – Residential : Isthmus B - Epsom	Special Character Areas Overlay – Business : Upper Symonds Street	
Special Character Areas Overlay – Residential : Isthmus B – Epsom/Greenlane	Special Character Areas Overlay – Business : West Lynn	
Special Character Areas Overlay – Residential : Isthmus B – Mount Eden/Epsom (Part A)	Special Character Areas Overlay – Business : Onehunga	
Special Character Areas Overlay – Residential : Isthmus B – Mount Eden/Epsom (Part B)	Special Character Areas Overlay – Business : Otahuhu	
Special Character Areas Overlay – Residential : Isthmus B - Mount Albert	Special Character Areas Overlay – Business : Howick	
Special Character Areas Overlay – Residential : Isthmus B - Mount Roskill		
Special Character Areas Overlay – Residential : Isthmus B - Otahuhu		

PC 78 (see [Modifications](#))

Special Character Areas Overlay - Residential	Special Character Areas Overlay - Business	Special Character Areas Overlay – General (both Residential and Business)
Special Character Areas Overlay – Residential : Isthmus C – St Heliers		
Special Character Areas Overlay – Residential : Isthmus C - Mount Eden		
Special Character Areas Overlay – Residential : Isthmus C -Three Kings		
Special Character Areas Overlay – Residential : Isthmus C - Mount Albert		
Special Character Areas Overlay – Residential : Isthmus C – Remuera/Epsom		
Special Character Areas Overlay – Residential : Station Road, Papatoetoe		
Special Character Areas Overlay – Residential : Pukehana Avenue		

The maps for the following special character areas are only provided in the planning maps:

Special Character Areas Overlay - Residential	Special Character Areas Overlay - Business	Special Character Areas Overlay – General (both Residential and Business)
Special Character Areas Overlay – Residential : Isthmus A		Special Character Areas Overlay – General : Hill Park
Special Character Areas Overlay – Residential : Pukehana Avenue		Special Character Areas Overlay – General : Puhoi

D18.2. Objectives

[new text to be inserted]

- (1) The special character values of the area, as identified in the special character area statement are maintained and enhanced.

- (2) The physical attributes that define, contribute to, or support the special character of the area are retained, including:
 - (a) built form, design and architectural values of buildings and their contexts;
 - (b) streetscape qualities and cohesiveness, including historical form of subdivision and patterns of streets and roads; and
 - (c) the relationship of built form to landscape qualities and/or natural features including topography, vegetation, trees, and open spaces.
- (3) The adverse effects of subdivision, use and development on the identified special character values of the area are avoided, remedied or mitigated.

PC 78 ([see Modifications](#))

[new text to be inserted]

D18.3. Policies

Special Character Areas Overlay - Residential

- (1) Require all development and redevelopment to have regard and respond positively to the identified special character values and context of the area as identified in the special character area statement.
- (2) Maintain and enhance the built form, design and architectural values of the buildings and the area, as identified in the special character area statement, so that new buildings, alterations and additions to existing buildings, infrastructure and subdivision (where applicable):
 - (a) maintain the continuity or coherence of the identified special character values of the area;
 - (b) maintain the streetscape qualities and cohesiveness;
 - (c) respond positively to the design, scale, height, setback and massing of existing development, any distinctive pattern of subdivision, intensity of development, its relationship to the street, streetscape cohesiveness and is of a compatible form which contributes to the identified special character values of the area;
 - (d) maintain the relationship of built form to open space and landscape context;
 - (e) maintain the setting of the special character area, where these features, such as mature trees and landform, contribute to the special character values of the area;
 - (f) enable the removal of additions and features that detract from the special character of the building or identified special character of the wider area;

- (g) minimise the loss of built fabric and encourage maintenance and repair;
 - (h) require new materials to be compatible with the age, detailing, finishes and colour; and
 - (i) recover or reveal special character values of buildings and features.
- (3) Discourage the removal or substantial demolition of buildings that contribute to the continuity or coherence of the special character area as identified in the special character area statement.
- (4) Require any application for demolition or removal of a building in a special character area to, on its own or cumulatively as a result of other removals or demolition, demonstrate that the loss of the building:
- (a) would not erode the identified special character values of the area; and
 - (b) would not disrupt the cohesiveness of the streetscape and wider special character area, including links with scheduled historic heritage places.
- (5) Encourage the on-going use and maintenance of buildings in special character areas.
- (6) Manage the design and location of car parking, garaging and accessory buildings to maintain and enhance the streetscape and special character values of the area, as identified in the special character statement.
- (7) Encourage the retention of special features such as boundary walls, fences, paths and plantings that contribute to the character of the area.

[PC 78 \(see Modifications\)](#)

[PC 78 \(see Modifications\)](#) | **[new text to be inserted]**

Special Character Areas Overlay - Business

- (8) Require all development and redevelopment to have regard and respond positively to the identified special character values and context of the area as identified in the special character area statement.
- (9) Identify individual buildings that contribute to the identified special character according to the following descriptions:
- (a) character defining – makes a considerable contribution to the character of the area because of historical, physical and visual qualities; and
 - (b) character supporting – makes a moderate contribution to the character of the area. The building should contribute to the appearance, quality, and identity of the area and should be consistent with the values of character-defining places.

- (10) Require any application for demolition or removal of a character-defining and character-supporting building in a Special Character Area- Business to, on its own or cumulatively as a result of other demolition, demonstrate that the loss of the building:
 - (a) would not erode the identified special character values of the area; and
 - (b) would not disrupt the cohesiveness of the streetscape and wider special character area, including links with scheduled historic heritage places.
- (11) Discourage the removal or substantial demolition of buildings that contribute to the continuity or coherence of the special character area as identified in the special character area statement.
- (12) Require new buildings, alterations or additions to existing buildings, or infrastructure, which are within the overlay but are not character defining or character supporting buildings, to maintain the integrity of the context of the area by providing quality design, materials, colour and decoration which respects and enhances the built form and streetscape of the area.
- (13) Require additions and alterations to existing character defining and character-supporting buildings, to be compatible with and respect the special character and existing scale of development.
- (14) Encourage the ongoing use and maintenance of buildings in special character areas.

D18.4. Activity table

Table D18.4.1 Activity table Special Character Areas Overlay – Residential specifies the activity status of land use and development for activities in the Special Character Area Overlay – Residential pursuant to section 9(3) of the Resource Management Act 1991.

Areas in the Special Character Areas Overlay - General may contain a mix of sites zoned residential or business. In such cases, for any site/s in a residential zone, the Special Character Areas Overlay - Residential rules in Table D18.4.1 Activity table will apply and for any site/s in a business zone, the Special Character Areas Overlay - Business rules in Table D18.4.2 Activity table will apply.

[new text to be inserted]

Rules for network utilities and electricity generation in the Special Character Areas Overlay – Residential and Business are located in [E26 Infrastructure](#).

PC 78 ([see Modifications](#))

PC 78 (see Modifications)

Table D18.4.1 Activity table – Special Character Areas Overlay - Residential

Activity		Activity status	[new text to be inserted]
[new text to be inserted]			
Development			
(A1)	Restoration and repair to a building on all sites in the Special Character Areas Overlay– Residential or the Special Character Areas Overlay - General (with a residential zoning)	P	[new text to be inserted]
(A2)	Minor alterations to the rear of a building on all sites in the Special Character Area Overlay – Residential or Special Character Areas Overlay - General (with a residential zoning) where works to the building use the same design and materials to the existing building	P	[new text to be inserted]
(A3)	<p>Total demolition or substantial demolition (exceeding 30 per cent or more, by area, of wall elevations and roof areas) of a building, or the removal of a building (excluding accessory buildings), or the relocation of a building within the site on:</p> <p>(a) all sites in all the following Special Character Areas Overlay - Residential:</p> <ul style="list-style-type: none"> (i) Special Character Area Overlay – Residential : Isthmus A; (ii) Special Character Areas Overlay – Residential : Pukehana Avenue; (iii) Special Character Area Overlay – General : Hill Park (those sites with a residential zone); and (iv) Special Character Area Overlay – General : Puhoi (those sites with a residential zone); and <p>(b) all other sites identified as subject to demolition, removal or relocation rules as shown in the maps in the Special</p>	RD	

PC 78 (see Modifications)

	Character Areas Overlay Statements.		
[new text to be inserted]	[new text to be inserted]	[new text to be inserted]	
(A4)	External alterations or additions to a building on all sites in the Special Character Areas Overlay–Residential or Special Character Areas Overlay - General (with a residential zoning)	RD	[new text to be inserted]
(A5)	Construction of a new building or relocation of a building onto a site on all sites in the Special Character Area Overlay–Residential or Special Character Areas Overlay - General (those sites with a residential zone)	RD	[new text to be inserted]
(A5A)	Rainwater tank	P	[new text to be inserted]

Table D18.4.2 Activity table – Special Character Area – Business specifies the activity status of land use and development for activities in the Special Character Area Overlay – Business pursuant to section 9(3) of the Resource Management Act 1991.

Areas in the Special Character Areas Overlay - General may contain a mix of sites zoned residential or business. In such cases, for any site/s in a residential zone, the Special Character Areas Overlay - Residential rules in Table D18.4.1 Activity table will apply and for any site/s in a business zone, the Special Character Areas Overlay - Business rules in Table D18.4.2 Activity table will apply.

[new text to be inserted]

Rules for network utilities and electricity generation in the Special Character Areas Overlay – Residential and Business are located in [E26 Infrastructure](#).

[new text to be inserted]

Table D18.4.2 Activity table – Special Character Areas Overlay - Business

Activity	Activity status	
Development		
Special Character Areas Overlay – Business with identified character defining buildings		
(A6)	External redecoration and repair to a character defining building	P
(A7)	Alterations to the rear of a character defining building	P
(A8)	Additions to a character defining building	RD

D18 Special Character Areas Overlay – Residential and Business

(A9)	Total or substantial demolition (exceeding 30 per cent or more, by area, of wall elevations and roof area) of a character defining building	D
(A10)	Any demolition of the front façade of a character defining building	RD
(A11)	Alterations to a character defining building not otherwise provided for above	RD
(A12)	New buildings	RD
(A13)	Alterations and additions to buildings, not identified as character defining buildings	RD
Special Character Areas Overlay – Business with identified character supporting buildings		
(A14)	External redecoration and repair of a character supporting building	P
(A15)	Alterations to the rear of a character supporting building, except on corner sites where the works use a similar design and materials to the existing building	P
(A16)	Additions to a character supporting building	RD
(A17)	Alterations to a character supporting building not otherwise provided for above	RD
(A18)	Total or substantial demolition of a character supporting building (exceeding 30 per cent or more, by area, of wall elevations and roof area)	RD
(A19)	Any demolition of the front façade of a character supporting building	RD
(A20)	New buildings	RD
(A21)	Alterations and additions to buildings not identified as character supporting buildings	RD
Special Character Areas Overlay – Business with no identified character defining or character supporting buildings		
(A22)	External redecoration and repair of a building in the Special Character Areas Overlay – Business with no identified character defining or character-supporting buildings	P
(A23)	Alterations to the rear of a building in the Special Character Areas Overlay – Business with no identified character defining or character-supporting buildings	P
(A24)	Additions to a building in the Special Character Areas Overlay – Business with no identified character defining or character-supporting buildings	RD
(A25)	Alterations to a building in the Special Character Areas Overlay – Business with no identified character defining or character-supporting buildings	RD
(A26)	Total or substantial demolition of a building (exceeding 30 per cent or more, by area, of wall elevations and roof area) in the Special Character Areas Overlay – Business with no identified character defining or character-supporting buildings	RD

(A27)	New buildings in the Special Character Areas Overlay – Business with no identified character defining or character-supporting buildings	RD
-------	---	----

D18.5. Notification

- (1) Any application for resource consent for an activity listed in Table D18.4.1 or Table D18.4.2 will be subject to the normal tests for notification under the relevant sections of the Resource Management Act 1991.
- (2) When deciding who is an affected person in relation to any activity for the purposes of section 95E of the Resource Management Act 1991 the Council will give specific consideration to those persons listed in Rule [C1.13\(4\)](#).

D18.6. Standards

D18.6.1. Standards for activities in the Special Character Areas Overlay - Residential

All activities listed in Table D18.4.1 Activity table - Special Character Areas Overlay - Residential must comply with the following standards.

[PC 78 \(see Modifications\)](#)

[\[new text to be inserted\]](#)

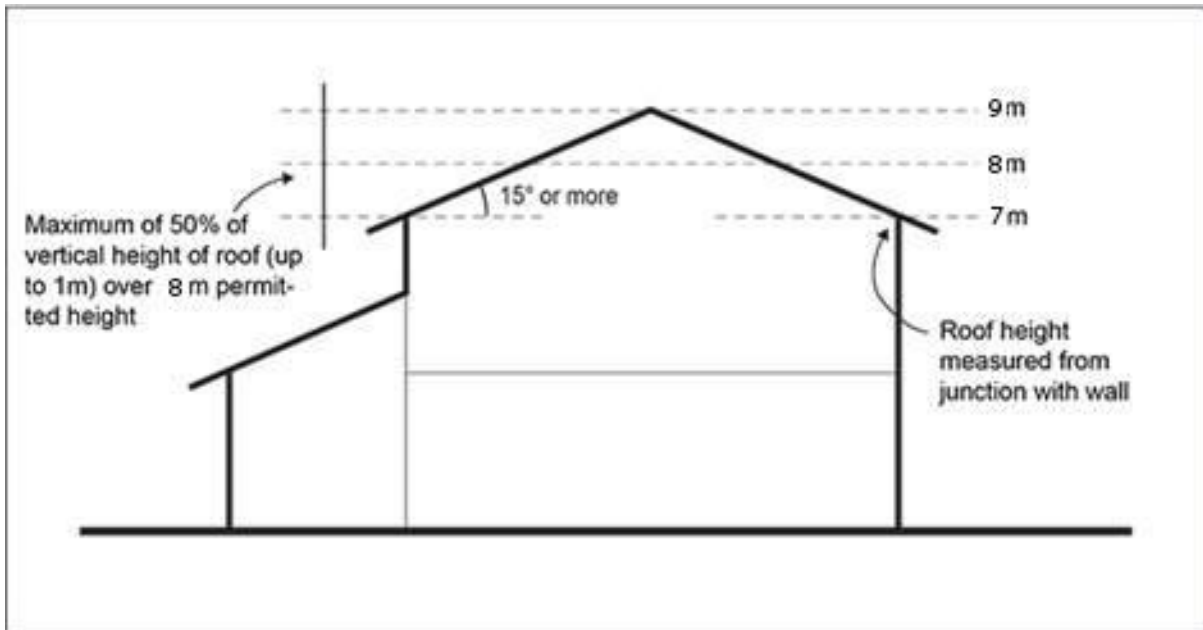
D18.6.1.1. Building height

[PC 78 \(see Modifications\)](#)

[\[new text to be inserted\]](#)

- (1) Buildings in the Special Character Areas Overlay – Residential must not exceed 8m in height except that 50 per cent of a building's roof in elevation, measured vertically from the junction between wall and roof, may exceed this height by 1m, where the entire roof slopes 15 degrees or more. This is shown in Figure D18.6.1.1.1 Building height in the Special Character Areas Overlay – Residential.

Figure D18.6.1.1.1 Building height in the Special Character Areas Overlay - Residential



D18.6.1.2. Height in relation to boundary

[new text to be inserted]

PC 78 (see Modifications)

- (1) Buildings in the Special Character Areas Overlay – Residential must not project above a 45-degree recession plane measured from a point 3m above the ground level along any boundary of the site.

[new text to be inserted]

PC 78 (see Modifications)

[new figure to be inserted]

D18.6.1.3. Yards

[new text to be inserted]

- (1) A building or parts of a building in the Special Character Overlay – Residential must be set back from the relevant boundary by the minimum depth listed in Table D18.6.1.3.1 Yards below:

Table D18.6.1.3.1 Yards

Yard	Minimum depth
Front	The average of existing setbacks of dwellings on adjacent sites, being the three sites on either side of the subject site or six sites on one side of the subject site
Side	1.2m
Rear	3m

[new text to be inserted]

PC 78 (see Modifications)

[new figure to be inserted]

PC 78 ([see Modifications](#))

D18.6.1.4. Building coverage

[new text to be inserted]

- (1) The maximum building coverage for sites in the Special Character Areas Overlay – Residential must not exceed the percentage of net site area listed in Table D18.6.1.4.1 Building coverage in the Special Character Areas Overlay – Residential below:

Table D18.6.1.4.1 Building coverage in the Special Character Areas Overlay – Residential

Site area	Building coverage
Up to 200m ²	55 per cent of the net site area
200m ² – 300m ²	45 per cent of the net site area
300m ² – 500m ²	40 per cent of the net site area
500m ² – 1,000m ²	35 per cent of the net site area
Greater than 1,000m ²	25 per cent of the net site area

D18.6.1.5. Landscaped area

[new text to be inserted]

- (1) The minimum landscaped area for sites in the Special Character Areas Overlay – Residential is the percentage of net site area listed in Table D18.6.1.5.1 Landscaped area in the Special Character Areas Overlay – Residential below:

Table D18.6.1.5.1 Landscaped area in the Special Character Areas Overlay – Residential

Site area	Landscaped area
Up to 200m ²	28 per cent of the net site area
200m ² – 500m ²	33 per cent of the net site area
500m ² – 1,000m ²	40 per cent of the net site area
Greater than 1,000m ²	50 per cent of the net site area

- (2) The front yard must comprise at least 50 per cent landscaped area.

PC 78 ([see Modifications](#))

D18.6.1.6. Maximum paved area

[new text to be inserted]

- (1) The maximum paved area for sites in the Special Character Areas Overlay – Residential must not exceed the percentage of net site area listed in Table D18.6.1.6.1 Maximum paved area in the Special Character Areas Overlay – Residential below:

PC 78 ([see Modifications](#))

Table D18.6. 1.6.1 Maximum paved area in the Special Character Areas Overlay – Residential

Site area	Paved area
Up to 200m ²	17 per cent of the net site area
200m ² – 500m ²	20 per cent of the net site area
500m ² – 1,000m ²	25 per cent of the net site area
Greater than 1,000m ²	25 per cent of the net site area

PC 78 ([see Modifications](#))

D18.6.1.7. Fences, walls and other structures

[new text to be inserted]

- (1) Fences, walls and other structures, or any combination of these, in the Special Character Areas Overlay - Residential must not exceed a height of 1.2m above ground level.

[new text to be inserted]

D18.6.1.8. Rainwater tanks

Purpose: To enable rainwater tank installation while maintaining the character of the streetscape

- (1) Rainwater tanks must not be located in a front yard unless they are at least 1.5m from the front boundary and located wholly below ground level. This standard shall not apply to a rear service lane where the dwellings have frontage to a public street.
- (2) Rainwater tanks directly adjoining a side yard facing building façade or located within a side yard must be wholly below ground level or set back at least 1m behind a line from the street facing building façade.
- (3) Rainwater tanks must not obscure (partially or totally) any window or door of the dwelling on the subject site.
- (4) Rainwater tanks directly adjoining a side façade or located within a side yard must be no greater than 800mm in width.
- (5) Rainwater tanks directly adjoining a side facade of a building must match the colour of that façade.
- (6) Rainwater tanks must not exceed 2 m in height, or 3 m in height where the rainwater tank directly adjoins an existing building.
- (7) Any overflow from the rainwater tank must discharge to the existing authorised stormwater system for the site.

Note: If there is a new stormwater discharge or diversion created Chapter E8.6.2.1 and Building Act requirements must be complied with.

Note: Building Act regulations apply. A building consent may be required under the Building Act.

D18.6.2. Standards for buildings in the Special Character Areas Overlay – Business

All activities listed in Table D18.4.2 Activity table - Special Character Areas Overlay - Business must comply with the standards for the zone in which they are located, unless otherwise specified.

D18.7. Assessment – controlled activities

There are no controlled activities in this section.

D18.8. Assessment – Restricted discretionary activities

D18.8.1. Matters of discretion

The Council will restrict its discretion to all the following matters when assessing a restricted discretionary resource consent application.

D18.8.1.1. Special Character Areas Overlay - Residential

[PC 78 \(see Modifications\)](#)

[new text to be inserted]

- (1) For the total demolition or substantial demolition (exceeding 30 per cent or more, by area, of wall elevations and roof areas); or the removal of a building (excluding accessory buildings) from a site; or the relocation of a building within the site:
 - (a) the effects on the streetscape and special character context as outlined in the special character area statement;
 - (b) the integrity of the building in its current state, having regard to its architectural form and style and the authenticity of its component parts as well as its contribution to the streetscape character;
 - (c) the building's relationship to other adjacent buildings, and if it contributes to a group in such a way that its loss or relocation would result in the loss of a character value attributable to the group;
 - (d) the condition of the building, and the practicality and cost of any necessary rehabilitation, and the ability to achieve reasonable amenity for occupants and reasonable compliance with any requirement of the Building Act 2004;
 - (e) where a replacement building is proposed, its design, quality, purpose and amenities and the contribution that such as building might make to the qualities of streetscape character; and
 - (f) the effect on landscape and vegetation.

- (2) for external alterations or additions to buildings; or for the construction of a new building or the relocation of a building onto a site:
- (a) the effects on the streetscape and special character context as outlined in the Special Character Area Statement;
 - (b) the building and its contribution to streetscape character; including its design, quality, purpose and amenities including matters of scale, form, massing, materials, setbacks and the relationship to the street; and
 - (c) the effects on landscape and vegetation.

[new text to be inserted]

- (3) for an infringement of the any of the standards listed in Standard D18.6.1 Standards for buildings in the Special Character Areas Overlay – Residential:
- (a) the effects of the infringement of the standard on the streetscape and special character context as outlined in the special character area statement; and

Note 1

Where more than one standard will be infringed, the effects of all infringements on the streetscape and special character context as outlined in the special character area statement will be considered together.

[new text to be inserted]

- (b) the matters for external alterations or additions to buildings or for the construction of a new building or relocation of buildings onto a site listed in D18.8.1.1(2) above.

[new text to be inserted]

D18.8.1.2. Special Character Business Areas

- (1) For all restricted discretionary activities:
- (a) the effects of the activity on the streetscape and special character context as outlined in the special character area statement;
 - (b) the integrity of the building in its current state, having regard to its architectural form and style and the authenticity of its component parts as well as its contribution to the streetscape character;
 - (c) the building's relationship to other adjacent buildings, and if it contributes to a group in such a way that its demolition, alteration or

PC 78 ([see Modifications](#))

addition would result in the loss of a character value attributable to the group; and

(d) the condition of the building, and the practicality and cost of any necessary rehabilitation, and the ability to achieve reasonable amenity for occupants and reasonable compliance with any requirement of the Building Act 2004.

(2) for an infringement of the any of the standards on the zone in which the building is located :

(a) the effects of the infringement of the standard on the streetscape and special character context as outlined in the special character area statement.

Note 1

Where more than one standard is infringed, the effects of all infringements on the streetscape and special character context as outlined in the special character area statement will be considered together.

D18.8.2. Assessment criteria

The Council will consider the relevant assessment criteria below for restricted discretionary activities.

D18.8.2.1. Special Character Areas Overlay – Residential

PC 78 ([see Modifications](#))

[new text to be inserted]

(1) For the total demolition or substantial demolition (exceeding 30 per cent or more, by area, of wall elevations and roof areas); or the removal of a building (excluding accessory buildings) from a site; or the relocation of a building within the site:

(a) Policies D18.3(1) to (7);

(b) for all areas in a Special Character Areas Overlay other than Special Character Areas Overlay – Residential : Isthmus B and Residential : Isthmus C:

(i) whether the building has retained its original (or repaired) visual design features relating to form, mass, proportion and materials so that restoration/renovation of the building is practical and reasonable. When determining what is practical and reasonable, regard shall be had to providing amenity for occupants and compliance with any requirement of the Building Act;

(ii) the extent to which any special character qualities and original design features of the existing building are visible from the street or a public realm;

- (iii) whether the building is beyond rehabilitation to its original state and the costs of the rehabilitation to reproduce the special character qualities of the building and enhance the architectural qualities and special character of the streetscape and the surrounding area, in comparison to the costs of a new building of a similar size and quality;
 - (iv) whether in rare cases the building is beyond rehabilitation in terms of poor structural or physical condition, and the costs of the repair work or upgrading necessary to extend the useful life of the building are prohibitive, (in comparison to the costs of a new building of similar size), an application for a new building may be considered favourably in accordance with assessment criteria D18.8.2.1(1)(b)(v) below;
 - (v) whether any proposed replacement building, in terms of its design, quality and amenities, makes a positive contribution to the qualities of streetscape character;
- (c) for Special Character Areas Overlay – Residential : Isthmus B and Residential : Isthmus C:
- (i) whether the special character and architectural value of the existing building (irrespective of age) and its contribution to streetscape character warrants its retention;
 - (ii) whether the special character value of the building by reference to its architectural style, whether as an exemplar of the type or as being representative of the type warrants its retention;
 - (iii) whether the integrity of the building in its current state, having regard to its architectural form and style and the authenticity of its component parts warrants its retention;
 - (iv) whether its relationship to other adjacent buildings and whether the contribution it makes to a group of buildings is such that its loss would result in the loss of a character value attributable to the group;
 - (v) whether its contribution to streetscape character by reference to surrounds within the site, and/or to the public street, and/or to relationships to open space shared with adjacent buildings warrants its retention;
 - (vi) whether the practicability and cost of any necessary rehabilitation, and the inability to achieve reasonable amenity for occupants and reasonable compliance with any requirement of the Building Act warrants its demolition;

- (vii) whether any proposed replacement building, in terms of its design, quality and amenities makes a positive contribution to the qualities of streetscape character.
- (viii) in Special Character Areas Overlay – Residential : Isthmus C; the extent to which the nature and extent of any disturbance to the biophysical components that contribute to streetscape character such as landform or vegetation cover can be avoided, remedied or mitigated.

(2) For external alterations and additions to a building:

(a) policies D18.3(1) to (7);

(b) for Special Character Areas Overlay – Residential : Helensville; Residential : General (with a residential zone); Residential – Balmoral Tram Suburb, West; Residential : Early Road Links; Residential : Kings Road and Princes Avenue; and Residential : Pukehana Avenue; Residential : Station Road, Papatoetoe:

- (i) whether the effect of the additions and/or alterations on the special character of the building maintains or enhances its contribution to the streetscape of the area;
- (ii) whether the design and appearance of the additions and/or alterations respond positively to the building, in terms of scale, proportions, architectural form, massing, materials and detailing;
- (iii) whether the addition or alteration is of a design and uses materials similar or compatible with the traditional character and material of the building;
- (iv) whether consideration has been given to retaining as much of the existing building façade as practicable by refurbishing, restoring and adapting parts of the existing building rather than replacing them;
- (v) whether the colour scheme is compatible with the age and detailing of the building; and
- (vi) whether the location and design of attachments, such as aerials and air conditioning units, are sympathetic to the existing building through the use of appropriate colour, design, form and location on the building.

(c) for Special Character Areas Overlay – Residential : Isthmus A:

- (i) whether, where garages or carports are to be adjoined to the existing building on the site, they are designed primarily to allow good visibility of the residential building from the street. Where

PC 78 ([see Modifications](#))

visibility of the building will be significantly obscured, whether alternative designs and locations for garages and carports or provision of a car pad have been considered.

(d) for Special Character Areas Overlay – Residential : Isthmus A and Residential : Isthmus C:

- (i) whether the form, mass, proportion and scale of the external additions and alterations are such that they maintain or enhance the streetscape character and amenity.

(e) for Special Character Areas Overlay – Residential : Isthmus A and Residential : Isthmus C1:

- (i) whether the alterations and/or additions to expand the building within a roof space leave visible the dominant form and lines of the existing roof, particularly when viewed from the street;
- (ii) whether, where decoration and architectural features are used, they follow the characteristic form and detail of the existing building on the site, or if the original features have been removed/altered, they follow the characteristic form and detail of other buildings of the same period in the street;
- (iii) whether materials used are the same or similar as the existing materials of the building so that the new building work is consistent with the traditional character and material of existing buildings on the site and in the street;
- (iv) whether any existing traditional fencing along the road frontage boundary is preserved or reinstated at the completion of development; and
- (v) whether, for those parts of the buildings highly visible to the street or public place the proportions and detail of the new windows and doors are consistent with those traditionally present in buildings of the style including the overall window to wall ratio.

(f) for Special Character Areas Overlay – Residential : Isthmus B:

- (i) whether the alteration or addition has regard to, or complements the form, style and materials of the existing building;
- (ii) whether the proposed change contributes positively to the street; and
- (iii) whether the alteration or addition is designed to have regard to landscape elements, including structural and built elements and existing established trees and hedges which make a significant

contribution to streetscape value or if, where this is not practical, replacement planting or a replacement structural/built element is proposed.

(g) for Special Character Areas Overlay – Residential : Isthmus C:

- (i) whether the scale, form, mass, proportion and colour of the external addition or alteration is compatible with the prevailing architectural style of the existing building on the site; and
- (ii) whether the additions and alterations which are visible from the street or public realm detract from the architectural character of period housing or landscape qualities that are predominant in the street.

(h) for Special Character Areas Overlay – Residential : Isthmus C1:

- (i) whether, where garages or carports are to be adjoined to the existing building on the site, they are designed primarily to allow good visibility of the residential building from the street. Where visibility of the building will be significantly obscured, whether alternative designs and locations for garages and carports or provision of a car pad have been considered, unless such alternative locations create adverse visual effects on a volcanic landform;
- (ii) whether the addition or alteration or associated site-works for any proposed addition or relocation has avoided physical effects on the natural volcanic landform, including cumulative effects; and
- (iii) whether the addition, alteration or relocation has minimized adverse visual effects on the volcanic landscape by minimising alteration to the natural landform, and by appropriate placement of additions or alterations on the site.

(i) for Special Character Areas Overlay – Residential : Isthmus C2:

- (i) whether, the additions, alterations or relocation are located so that larger trees on the site are retained, where this is not practical, whether replacement planting, particularly of indigenous trees will be undertaken where appropriate; and
- (ii) whether, the addition, alteration or relocation minimizes adverse visual effects on the landscape context by avoiding visually obtrusive excavation, and by appropriate placement of additions on the site.

(j) for Special Character Areas Overlay – Residential : North Shore:

Note1

The threshold limits outlined below and illustrated in Figure D18.8.2.1(2)(j).1 Threshold limits for alterations and additions have been determined in consideration of the sensitivity to change inherent in the various elements of special character buildings. These thresholds distinguish between relatively minor proposals for change and proposals which will require additional consideration and assessment.

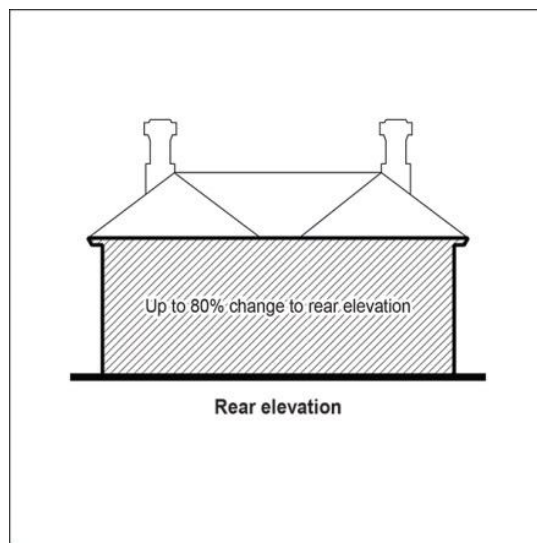
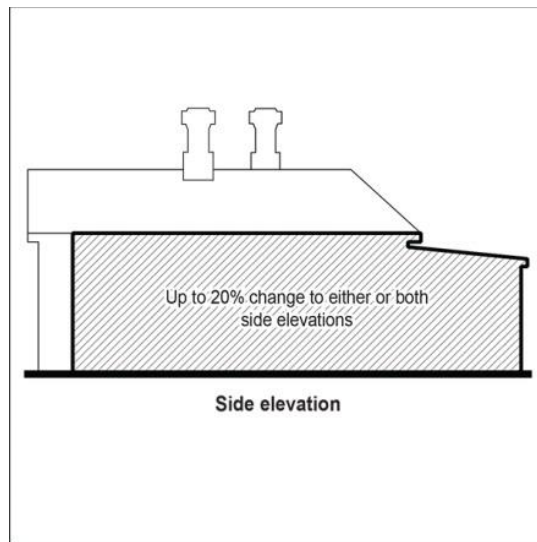
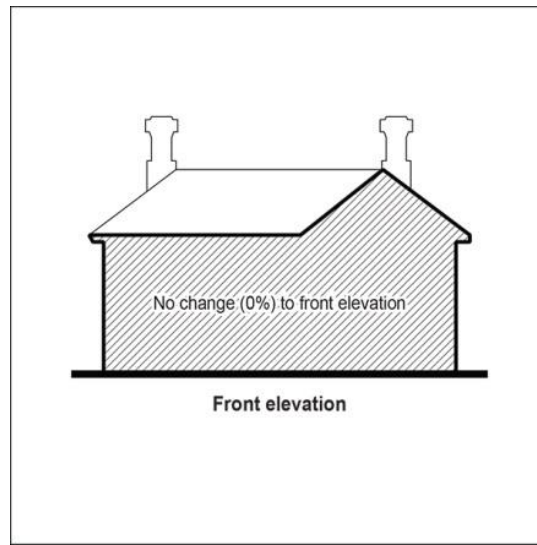
An application which proposes the following may be assessed only against criteria D18.8.2.1(2)(j)(i) – (v) below, where relevant:

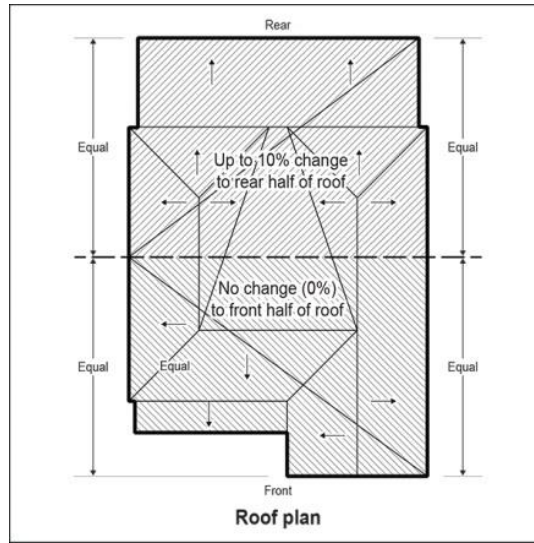
- no change to the front elevation (excluding the roof); and/or
- changes involving up to 20 per cent of the area of one or each of the side elevations (excluding the roof); and/or
- changes involving up to 80 per cent of the area of the rear elevation (excluding the roof); and/or
- no change to the front half of the roof; and/or
- changes involving up to 10 per cent of the rear half of the roof.

An application which proposes the following may be assessed against D18.8.2.1(2)(j)(i) – (vi) below, where relevant:

- any change to the front elevation (excluding the roof); and/or
- changes involving more than 20 per cent of the area of either side elevation (excluding the roof); and/or
- changes involving more than 80 per cent of the area of the rear elevation (excluding the roof); and/or
- any change to the front half of the roof; and/or
- changes involving more than 10 per cent of the rear half of the roof.

Figure D18.8.2.1(2)(j).1 Threshold limits for additions and alterations





- (i) whether the proposed additions/alterations to pre-1940 buildings retain the architectural and historic fabric, including the original roof form, proportions and style of the building and other design characteristics such as design detailing, built fabric and materials, finishes, proportions, and window size, proportion and location within walls. Whether alterations to post-1940s buildings are designed to avoid dominance of, or contrast with, the streetscape character;
- (ii) whether the alterations and/or additions to expand the building within a roof-space leave visible the dominant form and lines of the existing roof, particularly when viewed from the street;
- (iii) whether the additions and/or alterations adversely affects the contribution the subject building makes to a group of buildings which contribute to the special character of the area, particularly when the subject site is adjacent to or in the vicinity of any scheduled historic heritage place;
- (iv) whether the design and appearance of alterations or additions use materials that are the same or similar to existing materials to maintain the integrity of the special character of the area. Traditional materials such as corrugated steel sheet, timber shingles, timber weatherboards, and timber joinery are considered generally appropriate, especially where these materials match or are very similar to the original materials, and are used in the same manner as those of the subject building;
- (v) whether alterations and additions, to buildings that are clearly visible from the street or public realm should fit compatibly within the context of surrounding buildings and the neighbourhood and avoid dominance of, or contrast with the character of that

context. Special attention must be paid to the bulk, scale, form, massing and use of materials and consistency with the style and detailing of the building; and

- (vi) whether the additions/alterations have been designed to avoid cumulative adverse effects arising from successive additions and alterations. Where cumulative effects cannot be avoided, whether proposals include initiatives to recover original built form and lost details, particularly at the front of the buildings.

(3) For the construction of a new building or relocation of a building onto a site:

[PC 78 \(see Modifications\)](#)

(a) policies D18.3(1) to (7);

[new text to be inserted]

(b) for all areas in a Special Character Areas Overlay other than Special Character Areas Overlay – Residential : Isthmus B and Residential : Isthmus C:

- (i) whether the design and external appearance of the proposed building is compatible with the streetscape and the identified special character of the area;
- (ii) whether the form, mass, proportion and scale of the building is compatible with the special character of the area;
- (iii) whether the building preserves the sense of visual frontage access and interactivity between residential buildings and the street, and does not present blank or near-blank façades to the street;
- (iv) whether materials used maintain the integrity of, and have a clear relationship to, the traditional character and materials of buildings in the street;
- (v) whether those parts of a building which are highly visible to the street maintain a window to wall ratio visible from the street that is similar to that surviving original predominant character buildings in the street;
- (vi) whether the building is located on a site that reflects the original subdivision and development patterns existing in the street, particularly in situations where development is occurring on an amalgamated site so as to maintain the 'grain' of the area in terms of the size, spacing and rhythm of street front buildings;
- (vii) whether particular attention has been paid to the continuity of the front façade alignment to the street;

PC 78 ([see Modifications](#))

- (viii) whether the building has a roof form that is compatible with the traditional roof forms predominant in the special character area and identified in the special character statement;
 - (ix) whether the provision of any vehicle access and parking complements the character of the streetscape, having particular regard to location, design, detailing, use of materials and landscaping;
 - (x) whether garages and carports allow good visibility of the building from the street, and where possible are located to the rear of, underneath (where appropriate in terms of topography), or alongside the building on the site.
 - (xi) consent to the location of a garage or carport in the front yard may be considered acceptable where:
 - no practical location is available elsewhere on the site;
 - any structure associated with the parking provisions is minimal in scale, (which in most circumstances will exclude a double-width garage or double-width carport) and is designed in a manner which is coherent with the architectural character of any buildings on the site; and
 - the garage or carport will not significantly obscure the visibility of the existing building from the street or public realm;
 - (xii) whether any existing traditional fencing along the front boundary will be preserved or reinstated at the completion of development; and
 - (xiii) the extent to which a building is designed to have regard to any particular landscape elements including mature trees, which make a significant contribution to the streetscape and special character of the area, or how the proposal mitigates this through replacement planting.
- (c) for Special Character Areas Overlay – Residential : Isthmus B:
- (i) the design of a proposed new/relocated building will complement the existing patterns of bulk and location, and the relationship to the street in the vicinity of the site;
 - (ii) if a new/relocated building is significantly larger than existing adjacent buildings, its architectural design acknowledges the predominant scale of those existing buildings, through its massing and formal arrangement on the site. In the case of non-

residential buildings, it is acknowledged that such formal arrangement may not be appropriate;

- (iii) whether bulk and location standards prevent the achievement of an architectural scale which might otherwise be appropriate to the locality or to the prevailing scale, or whether some relaxation of such standards will enable development of more appropriate form and scale;
 - (iv) whether the design of a new/relocated building in a contemporary idiom can be shown by analysis to have qualities which are sympathetic to existing established architectural forms and scale, in such a way as to make a positive contribution to streetscape; and
 - (v) whether a new/relocated building is designed to have regard to landscape elements, including structural and built elements and existing established trees and hedges which make a significant contribution to streetscape value or if, where this is not practical, replacement planting or a replacement structural/built element is proposed
- (d) for Special Character Areas Overlay – Residential : Isthmus C1:
- (i) whether materials used maintain the integrity of, and have a clear relationship to, the traditional character and materials of existing buildings along the street;
 - (ii) whether the scale, form, mass, proportion and colour of the building is compatible with the architectural style predominant in the street;
 - (iii) whether those parts of a building highly visible to the street maintain a window to wall ratio visible from the street that is similar to the predominant special character buildings in the street;
 - (iv) whether the building is located on a site so that it reflects the original subdivision and development patterns existing in the street, particularly in situations where development is occurring on an amalgamated site so as to maintain the 'grain' of the area in terms of the size, spacing and rhythm of street-front buildings;
 - (v) whether buildings are located on a site so as not to detract from the continuity of the front façade alignment of residential buildings in the street;
 - (vi) whether any new or relocated building is visually compatible with and minimises the adverse effects on the volcanic landscape by

minimising alteration to the landform and the appropriate placement of the building on the site;

- (vii) whether any existing traditional fencing along the front boundary will be preserved or reinstated at the completion of development;
- (viii) whether the buildings preserves the sense of visual frontage access and interactivity between houses and the street, and does not present blank or near-blank façades to the street;
- (ix) whether the building maintains the predominance of pitched roof form; and
- (x) whether garages and carports obscure the visibility of the existing dwelling from the street or give rise to adverse visual effects on the volcanic landscape.

(e) for Special Character Areas Overlay – Residential : Isthmus C2:

- (i) whether materials used maintain the integrity of, and have a clear relationship to, the traditional character and materials of existing buildings on the street;
- (ii) whether the scale, form, mass, proportion and materials of the building is compatible with the architectural style of the existing building on the site, or the architectural style predominant in the street;
- (iii) whether the new building detracts from or adds to the consistency and harmony of building forms in the street and the coherence of the streetscape;
- (iv) whether the building contributes positively to the special character and coherence of the streetscape;
- (v) whether the building is located so that larger trees on the site are retained, and where this is not practical, replacement planting, particularly of indigenous trees are undertaken where appropriate;
- (vi) whether any building or site-works avoids physical effects on the natural land-form, including cumulative effects;
- (vii) whether any new or relocated building minimises adverse visual effects on the landscape by avoiding visually obtrusive excavation and by appropriate placement of the building on the site; and
- (viii) whether pitched roofs, in gabled and/or hipped forms, are used to mitigate adverse visual effects on the natural environment.

- (4) for an infringement of any of the standards listed in Standard D18.6.1 Standards for buildings in the Special Character Areas Overlay – Residential:

[PC 78 \(see Modifications\)](#)

- (a) policies D18.3(1) to (7).

D18.8.2.2. Special Character Areas Overlay - Business

- (1) For the total or substantial demolition (exceeding 30 per cent or more, by area, of wall elevations and roof area) of a character defining building or a character supporting building; or for the total or substantial demolition (exceeding 30 per cent or more, by area, of wall elevations and roof area) of a building in the Special Character Areas Overlay – Business with no identified character defining or character-supporting buildings; or for any demolition of the front façade of a character supporting building:

- (a) policies D18.3(8) to (14) as relevant, and in addition, all of the following:

- (i) whether the proposal significantly adversely affects the built special character of the area, including the contribution the individual building makes to the context, character or cohesiveness of the streetscape;
- (ii) the contribution the building makes to adjoining or nearby scheduled buildings and other character defining or supporting buildings or to the wider character area where there are no identified character supporting or character defining buildings, either through the context and the relationship of the building or through the building's mass, height or rhythm of façades;
- (iii) whether the existing building forms part of a cohesive group of buildings in terms of similarity of age, scale, proportion or design and the extent to which the building's demolition or partial demolition would detract from the contribution that group makes to streetscape, the special character and context of the area;
- (iv) whether the building is beyond rehabilitation to a state which would display its special qualities, architectural qualities or special characteristics of the streetscape and the surrounding area; and
- (v) whether the costs of restoration and repair are significantly greater in comparison to the costs of a new building of similar size and quality.

- (2) For additions to a character defining building:

- (a) policies D18.3(8) to (14) as relevant, and in addition, all of the following:

- (i) whether the additions are appropriate when considered against the relevant assessment criteria for additions in the zone;
- (ii) whether at the street elevation(s) maintains an appearance similar to the original façade of the character defining building;
- (iii) where relevant, whether the addition to building is positioned and designed to retain the continuity of the front façade alignment of the building or adjoining buildings and the established horizontal or vertical modulation;
- (iv) whether the design and materials respect and respond positively to those originally used and contribute strongly to the architectural character and detailing of the building;
- (v) whether the additions to building are compatible with the architectural form, mass, proportions and style of the existing building(s) on the site;
- (vi) whether the additions to the building retain as much of the existing building fabric as practicable;
- (vii) whether the additions to building use a colour scheme which is compatible with the age and detailing of the building;
- (viii) for retail premises whether the additions to the building have main frontage(s) incorporating significant areas of unobscured display glazing and building entries reflecting traditional forms in order to maintain good visual connections with the street; and
- (ix) whether the additions to the building locate and design attachments, such as signs, aerials and air conditioning units, sympathetically to the existing building.

(3) For alterations or additions to buildings identified as character supporting:

- (a) policies D18.3(8) to (14);
- (b) whether the alterations or additions to the building:
 - (i) are appropriate when considered against the relevant assessment criteria for alterations or additions in the zone;
 - (ii) have street elevation(s) sympathetic to the existing building, and any other surrounding scheduled historic heritage place, character-defining or character-supporting buildings;
 - (iii) where relevant, are positioned and designed to retain the continuity of the front façade alignment of the building or

adjoining buildings, and the adjoining established horizontal or vertical modulation;

- (iv) are compatible with the dominant architectural style of the existing building in terms of form, mass, proportion and materials;
 - (v) use materials which maintain the integrity of the special character and materiality of the building;
 - (vi) propose to combine adjoining buildings and whether the finished appearance/façade retains visual evidence of the historic pattern of development by vertical modulation;
 - (vii) for retail premises, have main frontage(s) incorporating significant areas of unobscured display glazing and building entries reflecting traditional forms in order to maintain good visual connections with the street; and
 - (viii) locate and design attachments, such as signs, aerials and air conditioning units, sympathetically to the existing building.
- (4) For new buildings; or alterations and additions to buildings not identified as character defining or character supporting:
- (a) policies D18.3(8) to (14);
 - (b) whether the new building or alterations and additions to buildings not identified as character defining or character supporting:
 - (i) are appropriate when considered against the relevant assessment criteria for new buildings or alterations or additions in the zone;
 - (ii) reflect and have regard to the special character statement for the area;
 - (iii) are designed to respond positively to the architectural form, bulk, proportions, materials and colour of any existing buildings on the site and/or any surrounding scheduled historic heritage place, character-defining or character-supporting buildings;
 - (iv) are designed to respond positively to the built form characteristics and urban structure of the special character area;
 - (v) are designed and located in a manner that respects original physical features of the special character area as identified in the built form section of the special character statement;

[PC 78 \(see Modifications\)](#)

[PC 78 \(see Modifications\)](#)

- (vi) where possible, are positioned to reflect and/or enhance the continuity of the historic front façade alignments of the adjoining character defining or character supporting buildings;
 - (vii) are constructed with materials that are of a high standard of quality and durability that respond positively to the architectural character and detailing of any scheduled historic heritage place, character-defining or character-supporting buildings;
 - (viii) are designed to respond positively to the established horizontal or vertical modulation evident on the front façade of any existing scheduled historic heritage place, character-defining or character-supporting buildings;
 - (ix) for retail premises, have main frontage(s) incorporating significant areas of unobscured display glazing and building entries reflecting traditional forms in order to maintain good visual connections with the street;
 - (x) proposes to combine buildings and/or sites, so that the finished appearance/facade maintains visual evidence of the previous pattern of development by vertical modulation; and
 - (xi) provides for on-site parking or loading where this would enable better outcomes in terms of maintaining/enhancing special character and supporting commercial land use viability.
- (5) For additions or alterations to a building in a Special Character Areas Overlay – Business with no identified character supporting or character defining buildings; or for a new building in a Special Character Areas Overlay – Business with no identified character supporting or character defining buildings:
- (a) policies D18.3(8) to (14);
 - (b) whether the proposal:
 - (i) is appropriate when considered against the relevant assessment criteria for new buildings or alterations or additions in the zone;
 - (ii) reflects and has regard to the special character statement for the area;
 - (iii) is designed to respond positively to the architectural form, bulk, proportions, materials, colour and other built form characteristics and urban structure of the special character area;
 - (iv) is designed and located in a manner that respects original physical features of the special character area as identified in the built form section of the special character statement;

[PC 78 \(see Modifications\)](#)

[PC 78 \(see Modifications\)](#)

[PC 78 \(see Modifications\)](#)

- (v) where possible, is positioned to reflect and/or enhance the continuity of the front façade alignments of the adjoining buildings;
- (vi) is constructed with materials that are of a high standard of quality and durability that respond positively to the architectural character and detailing identified in the special character statement;
- (vii) is designed to respond positively to the established horizontal or vertical modulation evident on the front façade of the existing buildings in the character area;
- (viii) for retail premises, has main frontage(s) incorporating significant areas of unobscured display glazing and building entries reflecting traditional forms in order to maintain good visual connections with the street;
- (ix) proposes to combine buildings and/or sites, so that the finished appearance/facade maintains visual evidence of the previous pattern of development by vertical modulation; and
- (x) provides for on-site parking or loading where this would enable better outcomes in terms of maintaining/enhancing special character and supporting commercial land use viability.

D18.9. Special information requirements

There are no special information requirements in this section.