

with a lattice that has an in-plane orientational epitaxy with the underlying mica lattice. The only reason x-ray analysis can be carried out on these structures is because we are able to signal average over a large collection of prisms that are aligned with one another and epitaxially arranged on the mica support.

This approach to controlling and monitoring the kinetics of crystal growth can be used to study environment-imposed changes in crystal morphology (28). Subtle changes in temperature markedly affect the growth of the crystals and the observed morphology of the crystals ultimately formed. Indeed, when the temperature is increased to 35°C, cubic-shaped features emerge at the edges of the prisms while scanning the crystals that were preformed at lower temperature with the PLH-coated AFM tip (Fig. 4). This morphological change is very reproducible and always was induced at the corners or edges of the starting triangular crystals.

This study provides an approach for site-specifically initiating crystal growth on the nanometer-length scale in a way that allows one to monitor growth from crystal seed to more mature structures as a function of environmental conditions (fig. S5). The size of the smallest crystal observed and studied in these experiments (d in Fig. 1) is five orders of magnitude smaller than what could be studied by single-crystal XRD techniques, allowing one to observe morphological changes that would typically go undetected in an x-ray study that

focuses on larger structures. Finally, growing crystals of macromolecules is not a trivial process. DPN is now a massively parallel tool (16, 29, 30), suggesting that this study may open the door for creating combinatorial approaches to identifying the proper conditions to initiate a particular type of crystal growth for a given set of target molecules.

References and Notes

1. E. M. Landau, M. Levanon, L. Leiserowitz, M. Lahav, J. Sagiv, *Nature* **318**, 353 (1985).
2. Y. Yin *et al.*, *Science* **304**, 711 (2004).
3. S. Mann, G. A. Ozin, *Nature* **382**, 313 (1996).
4. J. L. Fransaer, R. M. Penner, *J. Phys. Chem. B* **103**, 7643 (1999).
5. S. A. Empedocles, M. G. Bawendi, *Science* **278**, 2114 (1997).
6. J. J. Pluth *et al.*, *Proc. Natl. Acad. Sci. U.S.A.* **94**, 12263 (1997).
7. A. C. Hillier, M. D. Ward, *Science* **263**, 1261 (1994).
8. M. D. Ward, *Chem. Rev.* **101**, 1697 (2001).
9. D. E. Hooks, C. M. Yip, M. D. Ward, *J. Phys. Chem. B* **102**, 9958 (1998).
10. T. A. Land, A. J. Malkin, Y. G. Kuznetsov, A. McPherson, J. J. De Yoreo, *Phys. Rev. Lett.* **75**, 2774 (1995).
11. H. H. Teng, P. M. Dove, C. A. Orme, J. J. De Yoreo, *Science* **282**, 724 (1998).
12. J. K. Hobbs, M. J. Miles, *Macromolecules* **34**, 353 (2001).
13. N. Sanz, J. K. Hobbs, M. J. Miles, *Langmuir* **20**, 5989 (2004).
14. J. K. H. Hörber, M. J. Miles, *Science* **302**, 1002 (2003).
15. R. D. Piner, J. Zhu, F. Xu, S. Hong, C. A. Mirkin, *Science* **283**, 661 (1999).
16. D. S. Ginger, H. Zhang, C. A. Mirkin, *Angew. Chem. Int. Ed. Engl.* **43**, 30 (2004).
17. B. W. Maynor, J. Li, C. Lu, J. Liu, *J. Am. Chem. Soc.* **126**, 6409 (2004).
18. R. J. Barsotti, M. S. O'Connell, F. Stellacci, *Langmuir* **20**, 4795 (2004).

19. G. Agarwal, L. A. Sowards, R. R. Naik, M. O. Stone, *J. Am. Chem. Soc.* **125**, 580 (2003).
20. B. S. Jacobson, D. Branton, *Science* **195**, 302 (1977).
21. W. Dzwolak, R. Ravindra, C. Nicolini, R. Jansen, R. Winter, *J. Am. Chem. Soc.* **126**, 3762 (2004).
22. B. Ratner, V. V. Tsukruk, *Scanning Probe Microscopy in Polymers* (ACS Symposium Series, American Chemical Society, Washington, DC, 1998).
23. The orientation is not related to the tip scanning direction. Change of the orientation of the mica substrate does not change the growth of the prisms or their orientation with respect to each other and the mica.
24. X. Liu *et al.*, data not shown.
25. R. Kern, in *Crystal Growth in Science and Technology*, H. Arend, J. Hulliger, Eds. (Plenum Press, New York, 1989), pp. 143–165.
26. Materials and methods are available as supporting material on Science Online.
27. D. A. Walko *et al.*, *AIP Conf. Proc.* **705**, 1166 (2004).
28. W. C. McCrone, in *Physics and Chemistry of Organic Solid State*, D. Fox, M. M. Labes, A. Weissberger, Eds. (Interscience, New York, 1965), pp. 726–767.
29. S. Hong, C. A. Mirkin, *Science* **288**, 1808 (2000).
30. D. Bullen, S. W. Chung, X. Wang, J. Zou, C. A. Mirkin, *Appl. Phys. Lett.* **84**, 789 (2004).
31. Supported by the Nanoscale Science and Engineering Initiative of the NSF under NSF Award No. EEC-0118025, the NIH through Award No. GM62109-02, and a Director's Pioneer Award to C.A.M., the Institute for BioNanotechnology in Medicine, Baxter Healthcare Corp, and the Air Force Office of Scientific Research (AFOSR) through a Multidisciplinary University Research Initiative (MURI) Award.

Supporting Online Material

www.sciencemag.org/cgi/content/full/307/5716/1763/DC1  
 Materials and Methods  
 Figs. S1 to S5  
 Table S1  
 References

6 January 2005; accepted 3 February 2005  
 10.1126/science.1109487

# The Climate Change Commitment

T. M. L. Wigley

Even if atmospheric composition were fixed today, global-mean temperature and sea level rise would continue due to oceanic thermal inertia. These constant-composition (CC) commitments and their uncertainties are quantified. Constant-emissions (CE) commitments are also considered. The CC warming commitment could exceed 1°C. The CE warming commitment is 2° to 6°C by the year 2400. For sea level rise, the CC commitment is 10 centimeters per century (extreme range approximately 1 to 30 centimeters per century) and the CE commitment is 25 centimeters per century (7 to 50 centimeters per century). Avoiding these changes requires, eventually, a reduction in emissions to substantially below present levels. For sea level rise, a substantial long-term commitment may be impossible to avoid.

Oceanic thermal inertia causes climate change to lag behind any changes in external forcing and causes the response to be damped relative to the asymptotic equilibrium response (1–3). Because of this lag or damping effect, and because of the changes in atmospheric composition (and radiative forcing) that have already occurred, the climate system will continue to change for many decades (centuries for sea level) even in the absence of future changes in

atmospheric composition. For global-mean temperature, this is referred to as the “unrealized warming” (2), “residual warming” (4), or “committed warming” (5). Here, I use the term “warming commitment” or, to include sea level rise (6, 7), “climate change commitment.”

The assumption of constant atmospheric composition on which the warming commitment idea is based is clearly unrealistic, even as an extreme case of what might happen in the future. An alternative indicator of the commitment to climate change is to assume that the emissions (rather than concentrations)

of radiatively important species will remain constant. This Report investigates the constant-composition (CC) warming and sea level commitments, the constant-emissions (CE) commitments, and the uncertainties in each. Uncertainties arise from uncertainties in the climate sensitivity (2, 4), the rate of ocean heat uptake (2), the magnitude of past forcing, and the ice melt contribution to sea level change.

The usual (or “equilibrium”) CC warming commitment at time *t* is the difference between the equilibrium warming for forcing at this time ( $\Delta T_e$ ) and the corresponding realized warming ( $\Delta T_r$ ),  $\Delta T_e - \Delta T_r$ . This is related to the “radiation-imbalance” concept (8, 9). If  $\Delta Q$  is the forcing to date, and if  $\Delta Q_r$  is the forcing that gives an equilibrium warming of  $\Delta T_r$ , then the radiation imbalance is  $\Delta Q - \Delta Q_r$  [ $\Delta Q - \Delta Q_r$  is approximately equal to the flux of heat into the ocean (9)]. Hence

$$\Delta T_e - \Delta T_r = (\Delta Q - \Delta Q_r)(\Delta T_2 \times / \Delta Q_2 \times)$$

where  $\Delta Q_2 \times$  is the radiative forcing for a CO<sub>2</sub> doubling (about 3.7 W/m<sup>2</sup>) and  $\Delta T_2 \times$  is the corresponding equilibrium global-mean warming. A central estimate of  $\Delta Q$  (accounting for both natural and anthropogenic forcings) is about 1.7 W/m<sup>2</sup>, whereas  $\Delta T_r$  is about

National Center for Atmospheric Research, Boulder, CO 80307, USA. E-mail: wigley@cgd.ucar.edu

0.7°C. Given  $\Delta T2\times = 2.6^\circ\text{C}$  (10), a central value for the current equilibrium warming commitment is about 0.5°C, with a corresponding radiation-imbalance estimate of 0.7 W/m<sup>2</sup>. These results are in accord with other estimates in the literature, but uncertainties are large.

Because it would take an infinite time for the unrealized warming to appear, a more useful definition makes the unrealized warming a time-dependent quantity, namely, the evolving changes in global-mean temperature that would result if atmospheric composition were kept constant at its present state (4). This is the definition I use here. Temperatures under this new definition tend asymptotically to the previous equilibrium commitment definition. The new definition can be applied equally to the CC and CE commitments and can be used for both temperature and sea level.

To quantify the changes in global-mean temperature and sea level that would occur if either atmospheric composition or the emissions of radiatively important gases were kept constant at today's levels (the year 2000 is used to define "today"), I used the simple coupled gas-cycle/climate model MAGICC (10–12). MAGICC has been calibrated against a range of coupled atmosphere/ocean general-circulation models (13, 14) and was used in the Intergovernmental Panel on Climate Change (IPCC) Third Assessment Report (TAR) and earlier IPCC reports to produce the standard projections of global-mean temperature and sea level change. For access to MAGICC, see (15).

For sea level rise commitments, a change has been made in the way the melt contribution from land-based Glaciers and Small Ice Caps (GSICs) is calculated. In the TAR, the GSIC formula was only meant to be applied through the year 2100 (I project to the year 2400 here). Because of an empirical area-correction term used in the TAR (16), GSIC results are unrealistic beyond 2100, and the correction term imposes an artificial melt maximum (17). The modified formulation (17) matches the TAR results well through the year 2100 and then tends asymptotically to the initially available GSIC ice mass (taken as 40-cm sea level equivalent).

The other TAR sea level rise terms are (16) thermal expansion (a direct output of the climate model), mass-balance changes for the Greenland and Antarctic ice sheets, long-time-scale changes in these ice masses due to past climate change, deposition of sediments on the ocean floor, and runoff from the thawing of permafrost. In the TAR formulation, the last three components (referred to here as "unforced contributions") are independent of past forcings. To quantify nonexpansion uncertainties, I used methods employed in the TAR.

For the CC and CE temperature commitments, the primary sources of uncertainty are past radiative forcing, the climate sensitivity, and the rate of ocean heat uptake. For past

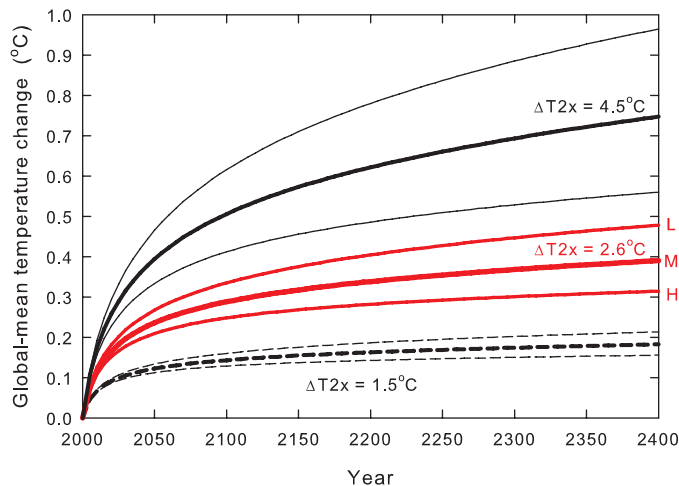
forcing, I considered the effect of natural forcings from solar irradiance changes (18) and volcanic eruptions (19), and uncertainties in aerosol forcing. For climate sensitivity, I used a central value of  $\Delta T2\times = 2.6^\circ\text{C}$  and a range of 1.5° to 4.5°C, approximately equal to the 90% confidence interval (CI) (10). For ocean mixing, I used vertical diffusivities ( $K_z$ ) of 1.3, 2.3, and 4.1 cm<sup>2</sup>/s, also representing the 90% CI and median values (10).

A breakdown of the natural and anthropogenic components of the CC commitment, together with uncertainties arising from ocean mixing ( $K_z$ ) uncertainties, is given in table S1. Past natural forcing (inclusion of which is the default case here) has a marked effect. The natural forcing component is surprisingly large, 64% of the total commitment in 2050, reducing to 52% by 2400. The effect of ocean mixing uncertainties is small, at most 7%.

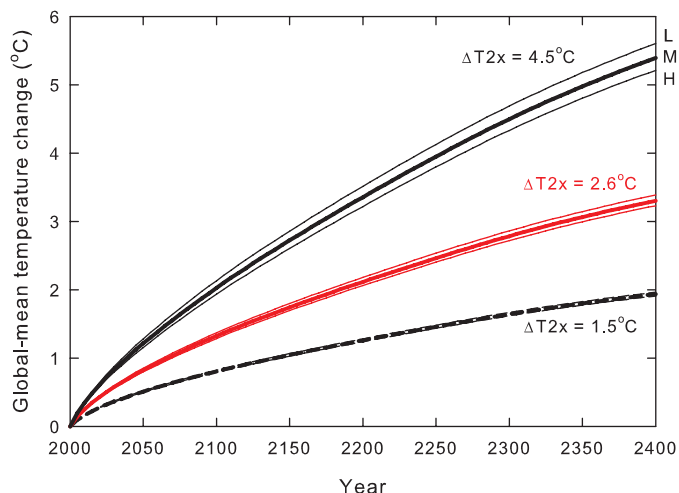
Overall results and uncertainties associated with aerosol forcing and the climate sensitivity are shown in Fig. 1 (CC case) and Fig. 2 (CE case). Aerosol forcing is characterized by the forcing in 1990. The central values (and uncertainty ranges) are those used for global-mean warming projections in the TAR

(10, 13):  $-0.4\text{W/m}^2$  ( $-0.3\text{W/m}^2$  to  $-0.5\text{W/m}^2$ ) and  $-0.8\text{W/m}^2$  ( $-0.4\text{W/m}^2$  to  $-1.2\text{W/m}^2$ ) for direct and indirect sulfate forcing, and  $-0.1\text{W/m}^2$  ( $-0.2\text{W/m}^2$  to  $+0.1\text{W/m}^2$ ) for the sum of biomass and fossil and organic carbonaceous aerosols. The central value for total aerosol forcing is  $-1.3\text{W/m}^2$  (range,  $-0.6\text{W/m}^2$  to  $-1.9\text{W/m}^2$ ). Results depend primarily on the total aerosol forcing rather than the specific breakdown into different forcing categories. Extreme combinations, such as high climate sensitivity with low aerosol forcing, have very low probability (20).

In the CC case (Fig. 1), both climate sensitivity and aerosol forcing uncertainties are of similar importance. The eventual (equilibrium) commitment could be larger than 1°C (for high sensitivity and low aerosol forcing; low aerosol forcing means a higher value for past total forcing). This result is consistent with Wetherald *et al.* (5) because the Geophysical Fluid Dynamics Laboratory (GFDL) model used by these authors has a high sensitivity (4°C) (14). At the other extreme, the eventual commitment could be less than 0.2°C (for low sensitivity, virtually independent of the magnitude of aerosol forcing).



**Fig. 1.** CC warming commitment (constant concentrations after 2000) for different climate sensitivities and aerosol forcing levels (L, M, and H on the right of the figure indicate low, mid-, and high magnitudes for aerosol forcing, respectively). Values for the central sensitivity value (2.6°C equilibrium warming for a CO<sub>2</sub> doubling) are shown in red.



**Fig. 2.** CE warming commitment (CEs after 2000) for different climate sensitivities and aerosol forcing levels (L, M, and H on the right of the figure indicate low, mid-, and high magnitudes for aerosol forcing, respectively).

Warming commitments for the CE case are much higher and do not tend to any asymptotic limit even on a time scale of millennia (largely because, at CE, CO<sub>2</sub> concentrations continue to grow for many centuries). Climate sensitivity uncertainties are the dominant source of commitment uncertainty. By 2400, the warming ranges from about 2°C (for low sensitivity) to almost 6°C (high sensitivity). The clear message here is that, if we are to avoid future warming of this magnitude, emissions of radiatively active gases will have to be reduced to substantially below present levels.

For the sea level rise commitment results, we have an additional source of uncertainty in the ice melt and unforced contributions to sea level rise. Table S2 shows uncertainties in the CC commitment arising from ocean mixing uncertainties and gives a breakdown of the sea level rise commitment into contributions due to past natural forcing, past anthropogenic forcing, and unforced contributions.

Uncertainties in the CC sea level commitment resulting from uncertainties in ocean

heat uptake arise in two ways. First, the rate of ocean heat uptake affects the rate of atmospheric warming, which affects the rate of melt of land-based ice. Second, the rate of ocean heat uptake directly affects oceanic thermal expansion. For the temperature/melt effect, larger  $K_z$  leads to a larger warming commitment, which increases sea level rise. For expansion, larger  $K_z$  leads to a greater expansion commitment, also increasing sea level rise. For the commitment, both effects act in concert, in contrast to absolute changes that have compensating effects that reduce overall sensitivity to ocean mixing uncertainties. However, the overall commitment uncertainties arising from  $K_z$  uncertainties are small at 7 to 9%.

The breakdown into natural forcing, anthropogenic forcing, and unforced effects shows that unforced effects make a substantial contribution (for the CC case, less so for the CE case). For sea level changes arising from past forcings, anthropogenic forcing dominates.

Climate sensitivity and sulfate aerosol forcing uncertainties for the sea level com-

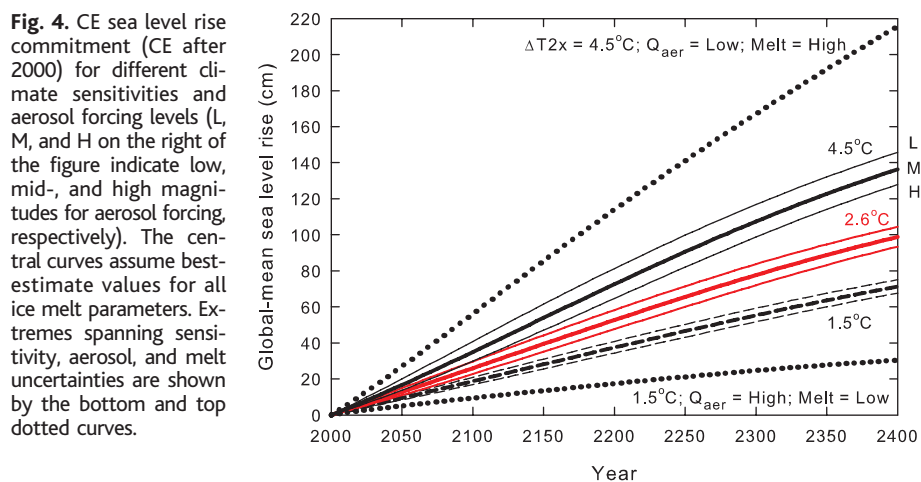
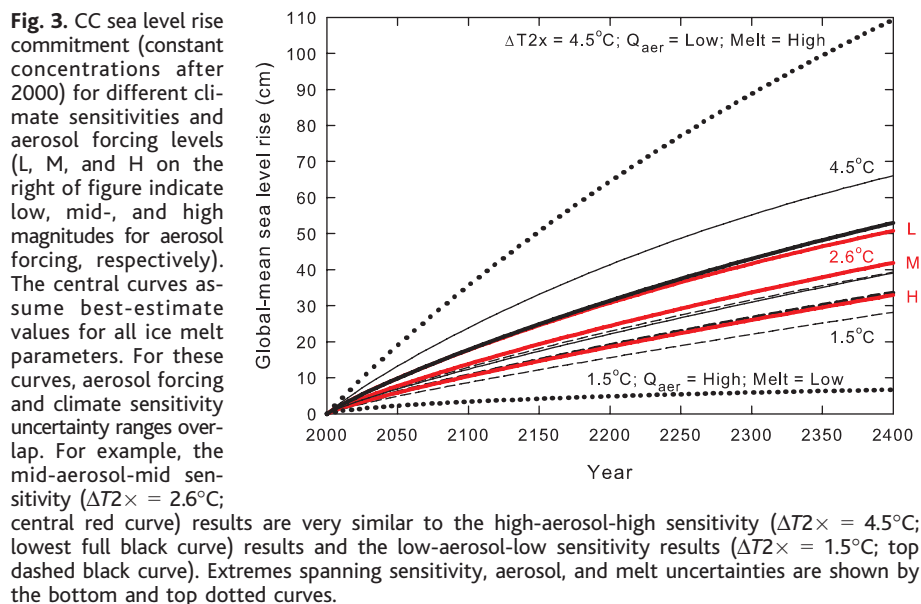
mitment are shown in Figs. 3 and 4. The CC case, constant concentrations from 2000, is shown in Fig. 3. The central commitment estimate (mid-aerosol forcing,  $\Delta T_{2\times} = 2.6^\circ\text{C}$ , mid-melt) is a continuing rise of around 10 cm/century, of which about 40% is due to unforced effects (table S2) (15). Aerosol uncertainty effects (low, middle, and high values for 1990 forcing) are indicated by the letters to the right of the figure. Results are also shown for sensitivities of  $\Delta T_{2\times} = 1.5^\circ$  and  $4.5^\circ\text{C}$  (mid-melt assumed). Climate sensitivity and aerosol forcing uncertainties are equally important, as shown by the overlapping ranges for different sensitivities. At the extreme high end (high sensitivity, low aerosol forcing, high melt), the rate of rise is almost 30 cm/century (26% due to unforced effects). At the extreme low end, the rate of rise is negligible (with zero unforced changes).

For the CE case (Fig. 4), CE from 2000, the central commitment estimate is a continuing rise of almost 25 cm/century. Approximately 15% of this is due to unforced effects. The lower and upper bounds are around 7 cm/century and more than 50 cm/century. These projections do not include the more catastrophic possibilities of accelerated melt in Greenland or the collapse of the West Antarctic ice sheet, as discussed in the TAR (16).

I considered the conventional (CC) commitment of changes that occur if atmospheric composition is held fixed at present (2000) levels, and the CE commitment for which emissions are fixed at their present levels. These commitments have been quantified for both global-mean temperature and sea level rise. Time-dependent changes are considered rather than just the usual asymptotic or equilibrium commitment.

The CC warming commitment rises steadily to an eventual warming of about 0.2° to more than 1°C. The contribution from past natural forcings exceeds that from past anthropogenic forcing. The corresponding CE warming commitment has no limit even on a time scale of many centuries, primarily because, at CE, CO<sub>2</sub> concentrations continue to rise for a millennium or more. The CE warming commitment in 2400 ranges from 2° to almost 6°C, with most of the commitment due to past anthropogenic forcing. Both climate sensitivity and past aerosol forcing uncertainties are important in determining the CC commitment, whereas climate sensitivity is the main source of uncertainty for the CE commitment.

For sea level rise, both the CC and CE commitments lead to almost linear increases in sea level out to at least 2400 and probably much longer. For the CC commitment, sea level rises at about 10 cm/century (uncertainty range, near zero to about 30 cm/century). Except at the low end of the range, a substantial fraction of this increase arises from unforced contributions to sea level rise (40% in the cen-



tral case). For the CE commitment, sea level rises at about 25 cm/century (uncertainty range, 7 to more than 50 cm/century). The fractions arising from unforced contributions to sea level rise are less than those in the CC case.

The CE results reinforce the common knowledge that, in order to stabilize global-mean temperatures, we eventually need to reduce emissions of greenhouse gases to well below present levels (21). The CC results are potentially more alarming, because they are based on a future scenario that is clearly impossible to achieve and so represent an extreme lower bound to climate change over the next few centuries. For temperature, they show that the inertia of the climate system alone will guarantee continued warming and that this warming may eventually exceed 1°C. For sea level, a continued rise of about 10 cm/century for many centuries is the best estimate. Although such a slow rate may allow many coastal communities to adapt, profound long-term impacts on low-lying island communities and on vulnerable ecosystems (such as coral reefs) seem inevitable.

## How Much More Global Warming and Sea Level Rise?

Gerald A. Meehl,\* Warren M. Washington, William D. Collins,  
Julie M. Arblaster, Aixue Hu, Lawrence E. Buja,  
Warren G. Strand, Haiyan Teng

Two global coupled climate models show that even if the concentrations of greenhouse gases in the atmosphere had been stabilized in the year 2000, we are already committed to further global warming of about another half degree and an additional 320% sea level rise caused by thermal expansion by the end of the 21st century. Projected weakening of the meridional overturning circulation in the North Atlantic Ocean does not lead to a net cooling in Europe. At any given point in time, even if concentrations are stabilized, there is a commitment to future climate changes that will be greater than those we have already observed.

Increases of greenhouse gases (GHGs) in the atmosphere produce a positive radiative forcing of the climate system and a consequent warming of surface temperatures and rising sea level caused by thermal expansion of the warmer seawater, in addition to the contribution from melting glaciers and ice sheets (1, 2). If concentrations of GHGs could be stabilized at some level, the thermal inertia of the climate system would still result in further increases in temperatures, and sea level would continue to rise (2–9). We performed multimember ensemble simulations with two global coupled three-dimensional climate models to quantify

### References and Notes

- M. L. Hoffert, A. J. Callegari, C.-T. Hsieh, *J. Geophys. Res.* **86**, 6667 (1980).
- J. Hansen et al., *Science* **229**, 857 (1985).
- T. M. L. Wigley, M. E. Schlesinger, *Nature* **315**, 649 (1985).
- T. M. L. Wigley, *Climate Monitor* **13**, 133 (1984).
- R. T. Wetherald, R. J. Stouffer, K. W. Dixon, *Geophys. Res. Lett.* **28**, 1535 (2001).
- T. M. L. Wigley, S. C. B. Raper, in *Climate and Sea Level Change: Observations, Projections and Implications*, R. A. Warrick, E. M. Barrow, T. M. L. Wigley, Eds. (Cambridge Univ. Press, Cambridge, 1993), pp. 111–133.
- R. J. Stouffer, S. Manabe, *J. Clim.* **12**, 2224 (1999).
- J. Hansen et al., *J. Geophys. Res.* **107**, 4347, 10.1029/2001JD001143 (2002).
- R. A. Pielke Sr., *Bull. Am. Met. Soc.* **84**, 331 (2003).
- T. M. L. Wigley, S. C. B. Raper, *Science* **293**, 451 (2001).
- S. C. B. Raper, T. M. L. Wigley, R. A. Warrick, in *Sea-Level Rise and Coastal Subsidence: Causes, Consequences and Strategies*, J. Milliman, B. U. Haq, Eds. (Kluwer Academic Publishers, Dordrecht, Netherlands, 1996), pp. 11–45.
- T. M. L. Wigley, S. C. B. Raper, *J. Clim.* **15**, 2945 (2002).
- U. Cubasch, G. A. Meehl, in *Climate Change 2001: The Scientific Basis*, J. T. Houghton et al., Eds. (Cambridge Univ. Press, Cambridge, 2001), pp. 525–582.
- S. C. B. Raper, J. M. Gregory, T. J. Osborn, *Clim. Dyn.* **17**, 601 (2001).
- Materials and methods are available as supporting material on Science Online.
- J. A. Church, J. M. Gregory, in *Climate Change 2001: The Scientific Basis*, J. T. Houghton et al., Eds. (Cambridge Univ. Press, Cambridge, 2001), pp. 639–693.

- T. M. L. Wigley, S. C. B. Raper, *Geophys. Res. Lett.*, in press.
- J. Lean, J. Beer, R. Bradley, *Geophys. Res. Lett.* **22**, 3195 (1995).
- C. M. Ammann, G. A. Meehl, W. M. Washington, C. S. Zender, *Geophys. Res. Lett.* **30**, 1657, 10.1029/2003GL016875 (2003).
- This is a sensitivity study and not a probabilistic analysis. Simplistically, if the high climate sensitivity and low forcing extremes are independent and each has a probability of exceedance of 0.05, the probability of both being exceeded is 0.0025. Further constraints may be placed by comparing model simulations with observed climate changes over the past century (22).
- T. M. L. Wigley, R. Richels, J. A. Edmonds, *Nature* **379**, 240 (1996).
- C. E. Forest, P. H. Stone, A. P. Sokolov, M. R. Allen, M. D. Webster, *Science* **295**, 113 (2002).
- Supported in part by the U.S. Environmental Protection Agency under contract no. GS-10F-0299K to Stratus Consulting and by NOAA under grant NA87GP0105. Opinions, findings, or conclusions expressed are those of the author and do not necessarily reflect the views of the funding organization. The National Center for Atmospheric Research is supported by the NSF.

### Supporting Online Material

www.sciencemag.org/cgi/content/full/307/5716/1766/DC1  
Materials and Methods  
Tables S1 and S2

11 August 2004; accepted 10 January 2005  
10.1126/science.1103934

munity Climate System Model version 3 (CCSM3), with higher horizontal resolution (atmospheric gridpoints roughly every 1.4° as compared to the PCM, with gridpoints about every 2.8°) and improved parameterizations in all components of atmosphere, ocean, sea ice, and land surface (16). The CCSM3 has somewhat higher sensitivity, with an equilibrium climate sensitivity of 2.7°C and TCR of 1.5°C. Both models have about 1° ocean resolution (0.5° in the equatorial tropics), with dynamical sea ice and land surface schemes. These models were run for four- and eight-member ensembles for the PCM and CCSM3, respectively, for each scenario (except for five members for A2 in CCSM3).

The 20th-century simulations for both models include time-evolving changes in forcing from solar, volcanoes, GHGs, tropospheric and stratospheric ozone, and the direct effect of sulfate aerosols (14, 17). Additionally, the CCSM3 includes black carbon distributions scaled by population over the 20th century, with those values scaled by sulfur dioxide emissions for the rest of the future climate simulations. The CCSM3 also uses a different solar forcing data set for the 20th century (18). These 20th-century forcing differences between CCSM3 and PCM are not thought to cause large differences in response in the climate change simulations beyond the year 2000.

The warming in both the PCM and CCSM3 is close to the observed value of about 0.6°C for the 20th century (19), with PCM warming 0.6°C and CCSM3 warming 0.7° (averaged over the period 1980–1999 in relation to 1890–1919). Sea level rises are 3 to 5 cm, respectively, over the 20th century as com-

National Center for Atmospheric Research, Post Office Box 3000, Boulder, CO 80307, USA.

\*To whom correspondence should be addressed.  
E-mail: meehl@ncar.ucar.edu

pared to the observed estimate of 15 to 20 cm. This lower value from the models is consistent with the part of 20th-century sea level rise

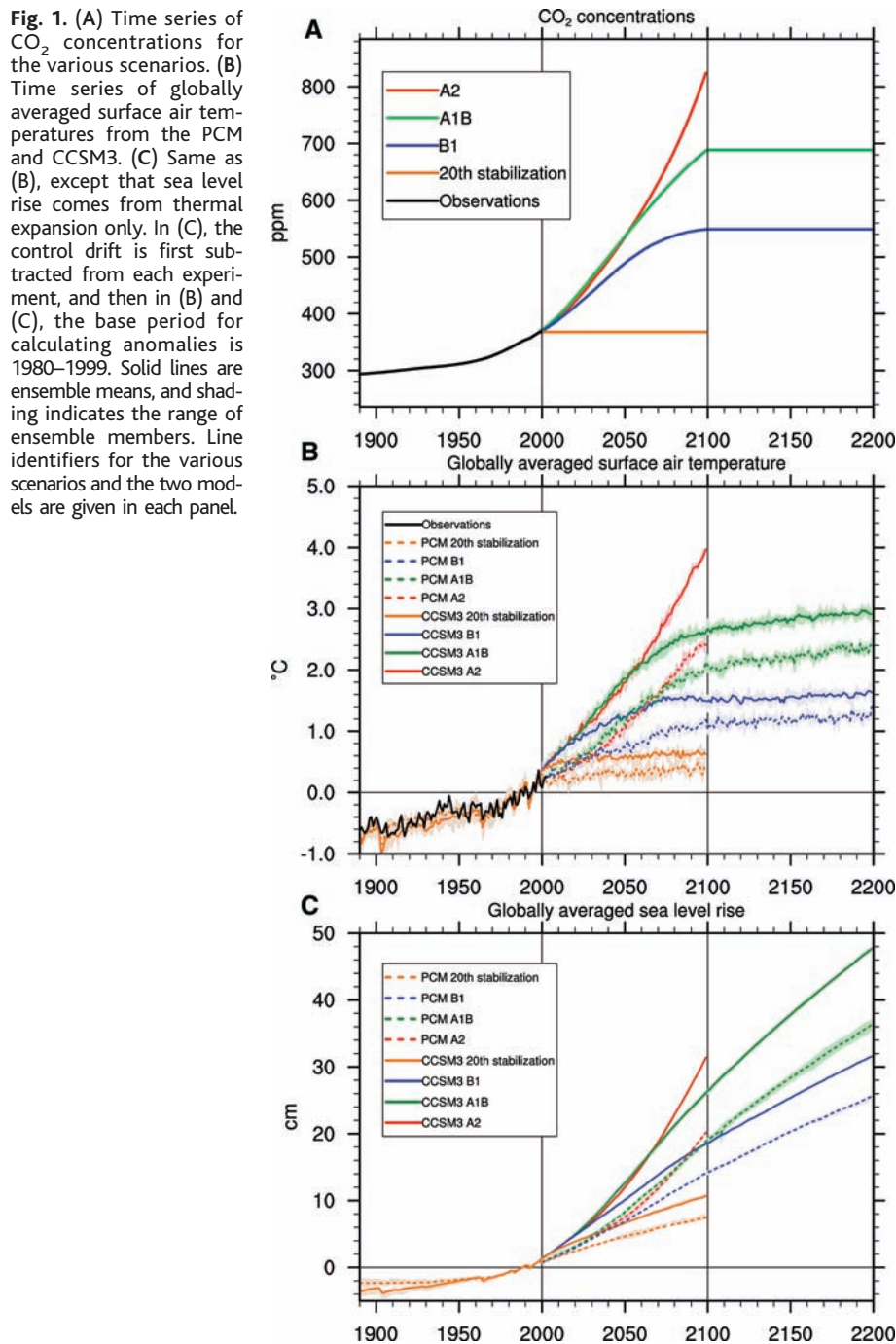
thought to be caused by thermal expansion (20, 21), because as the ocean warms, seawater expands and sea level rises. Neither model

includes contributions to sea level rise due to ice sheet or glacier melting. Partly because of this, the sea level rise calculations for the 20th century from the models are probably at least a factor of 3 too small (20, 21). Therefore, the results here should be considered to be the minimum values of sea level rise. Contributions from future ice sheet and glacier melting could perhaps at least double the projected sea level rise produced by thermal expansion (1).

Atmospheric CO<sub>2</sub> is the dominant anthropogenic GHG (22), and its time evolution can be used to illustrate the various scenarios (Fig. 1A). The three Special Report for Emissions Scenarios (SRES) show low (B1), medium (A1B), and high (A2) increases of CO<sub>2</sub> over the course of the 21st century. Three stabilization experiments were performed: one with concentrations of all constituents held constant at year 2000 values and two (B1 and A1B) with concentrations held constant at year 2100 values. Although these are idealized stabilization experiments, it would take a significant reduction of emissions below 1990 values within a few decades and within about a century to achieve stabilized concentrations in B1 and A1B, respectively (23).

Even if we could have stopped any further increases in all atmospheric constituents as of the year 2000, the PCM and CCSM3 indicate that we are already committed to 0.4° and 0.6°C, respectively, more global warming by the year 2100 as compared to the 0.6°C of warming observed at the end of the 20th century (Table 1 and Fig. 1B). (The range of the ensembles for the climate model temperature anomalies here and to follow is about ±0.1°C.) But we are already committed to proportionately much more sea level rise from thermal expansion (Fig. 1C).

At the end of the 21st century, as compared to the end of the 20th century (1980–1999 base period), warming in the low-estimate climate change scenario (SRES B1) is 1.1° and 1.5°C in the two models (Table 1 and Fig. 1B), with sea level rising to 13 and 18 cm above year 1999 levels. The spread among the ensembles for sea level in all cases amounts to less than ±0.3 cm. A medium-range scenario (SRES A1B) produces a warming at the end of the 21st century of 1.9° and 2.6°C, with about 18 and 25 cm of sea level rise in the two models. For the high-estimate scenario (A2), warming at 2100 is about 2.2° and 3.5°C, and sea level rise is 19 and 30 cm. The range of transient temperature response in the two models for the 20th century through the mid-21st century is considerably less than the range in their equilibrium climate sensitivities (Table 1) due in part to less than doubled CO<sub>2</sub> forcing as well as ocean heat uptake characteristics (24). Thus, our confidence in model simulations of 20th-century climate change and projections for much of the 21st century (as represented by the range



**Table 1.** Globally averaged surface temperature differences (in °C) comparing equilibrium climate sensitivity from the two models with simulated warming for the 20th century, mid-21st century, and late 21st century for the different experiments. Midcentury differences are calculated for 2041–2060 minus 1980–1999, and late century differences are for 2080–2099 minus 1980–1999. A2 at 2100 has more than double present-day CO<sub>2</sub> amounts (Fig. 1A).

Model	Equilibrium sensitivity	20th century	2050 stabilized	2050 B1	2050 A1B	2050 A2	2100 stabilized	2100 B1	2100 A1B	2100 A2
PCM	2.1	0.6	0.3	0.7	1.2	1.1	0.4	1.1	1.9	2.2
CCSM3	2.7	0.7	0.6	1.2	1.9	1.8	0.6	1.5	2.6	3.5

in the transient response of the models) is considerably better than that represented by the larger uncertainty range of the equilibrium climate sensitivity among the models.

If concentrations of all GHGs and other atmospheric constituents in these simulations are held fixed at year 2100 values, we would be committed to an additional warming by the year 2200 for B1 of about 0.1° to 0.3°C for the models (Fig. 1B). This small warming commitment is related to the fact that CO<sub>2</sub> concentrations had already started to stabilize at about 2050 in this scenario (Fig. 1A). But even for this small warming commitment in B1, there is almost double the sea level rise seen over the course of the 21st century by 2200, or an additional 12 and 13 cm (Fig. 1C). For A1B, about 0.3°C of additional warming occurs by 2200, but again there is roughly a doubling of 21st-century sea level rise by the year 2200, or an additional 17 and 21 cm. By 2300 (not shown), with concentrations still held at year 2100 values, there would be less than another 0.1°C of warming in either scenario, but yet again about another doubling of the committed sea level rise that occurred during the 22nd century, with additional increases of 10 and 18 cm from thermal expansion for the two models for the stabilized B1 experiment, and 14 and 21 cm for A1B as compared to year 2200 values. Sea level rise would continue for at least two more centuries beyond 2300, even with these stabilized concentrations of GHGs (2).

The meridional overturning maximum in the North Atlantic, indicative of the thermohaline circulation in the ocean, is stronger in the preindustrial simulation in the PCM (32.1 sverdrups) compared to the CCSM3 (21.9 sverdrups), with the latter closer to observed estimates that range from 13 to 20 sverdrups (25–27). The mean strength of the meridional overturning and its changes are an indication of ocean ventilation, and they contribute to ocean heat uptake and consequent time scales of temperature response in the climate system (12, 24, 28).

The model with the higher sensitivity (CCSM3) has the greater temperature and sea level rise response at the year 2100 for the B1, A1B, and A2 scenarios (Fig. 1, B and C) and also the larger decrease in meridional overturning in the North Atlantic (−4.0, −5.3, and −6.2 sverdrups or −18, −24, and −28%, respectively) as compared to the model that is less sensitive (PCM), with the lower forced response for B1, A1B, and A2 with decreases of meridional overturning in the Atlantic that are about a factor of 2 less (−1.0, −3.5, and −4.5 sverdrups, or −3, −11, and −14%, respectively). This is consistent with the idea that a larger percentage decrease in meridional overturning would be associated with greater ocean heat uptake and greater surface temperature warming (12, 24).

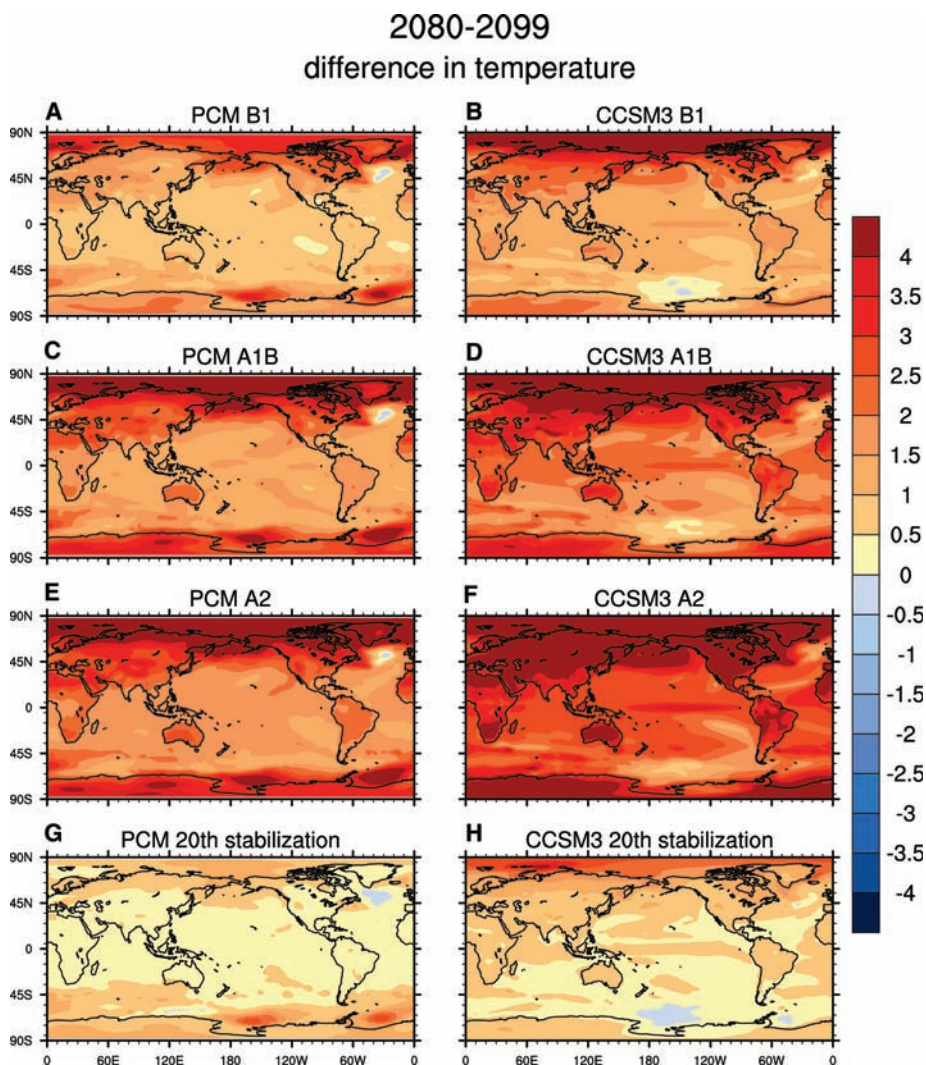
The warming commitment for 20th-century forcing held fixed at year 2000 values is larger

in the CCSM3 than in the PCM (0.6° versus 0.4°C). This is also consistent with the recovery of the meridional overturning in the 21st century after concentrations are stabilized in the PCM (net recovery of +0.2 sverdrups) compared to the CCSM3 (meridional overturning continues to weaken by −0.3 sverdrups before a modest recovery).

Therefore, the PCM, with less climate sensitivity and lower TCR but with greater mean meridional overturning in the Atlantic, has less reduction of North Atlantic meridional overturning and less forced response. The meridional overturning recovers more quickly in the PCM, contributing to even less warming commitment after concentrations are stabilized at year 2000 values. On the other hand, the CCSM3, with higher sensitivity and weaker

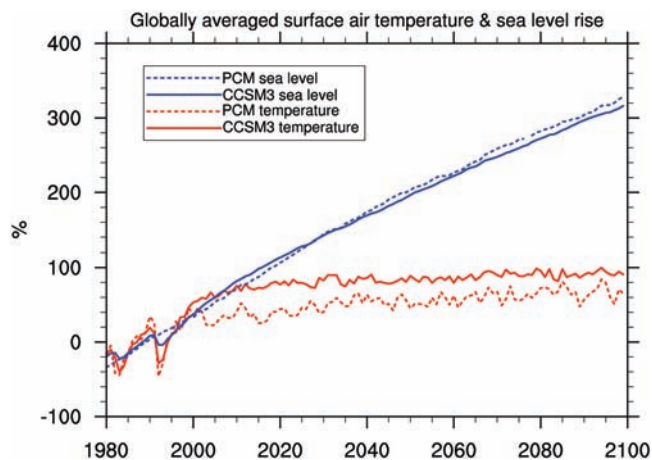
mean meridional overturning, has a larger reduction of meridional overturning due to global warming (and particularly a larger percent decrease of meridional overturning) than the PCM and contributes to more warming commitment for GHG concentrations stabilized at year 2000 values.

The processes that contribute to these different warming commitments involve small radiative flux imbalances at the surface (on the order of several tenths of a watt per square meter) after atmospheric GHG concentrations are stabilized. This small net heat flux into the ocean is transferred to the deeper layers through mixing, convection, and ventilation processes such as the meridional overturning circulation that connects the Northern and Southern Hemisphere high-latitude deep



**Fig. 2.** Surface temperature change for the end of the 21st century (ensemble average for years 2080–2099) minus a reference period at the end of the 20th century (ensemble average for years 1980–1999) from 20th-century simulations with natural and anthropogenic forcings. (A) The PCM for the B1 scenario. (B) The CCSM3 for the B1 scenario. (C) The PCM for the A1B scenario. (D) The CCSM3 for the A1B scenario. (E) The PCM for the A2 scenario. (F) The CCSM3 for the A2 scenario. (G and H) Temperature commitment for GHG concentrations stabilized at year 2000 values; ensemble average for years 2080–2099 minus a reference period ensemble average for years 1980–1999 from 20th-century simulations. More than 95% of the values in each panel are significant at the 10% level from a Student's *t* test, and a similar proportion exceed 1 SD of the intraensemble standard deviations.

**Fig. 3.** Ensemble mean percent increase of globally averaged surface air temperature and sea level rise from the two models computed relative to values for the base period 1980–1999 for the experiment in which GHG concentrations and all other atmospheric constituents were stabilized at the end of the 20th century.



ocean circulations (29). Thus, in addition to changes in the meridional overturning circulation, the strength of the mean circulation also plays a role (12, 24, 28). The temperature difference between the upper and lower branches of the Atlantic meridional overturning circulation is smaller in the PCM than in the CCSM3 because of the stronger rate of mean meridional overturning in the PCM that induces a greater heat exchange or ventilation between the upper and deeper ocean. In the PCM, recovery of the meridional overturning is more rapid in the 21st century, thus producing even greater mixing and less warming commitment, whereas the CCSM3 recovers more slowly, with greater warming commitment by the year 2200 and on to 2300.

Geographic patterns of warming (Fig. 2) show more warming at high northern latitudes and over land, generally larger-amplitude warming in the CCSM3 as compared to the PCM, and geographic temperature increases roughly proportional to the amplitude of the globally averaged temperature increases in the different scenarios (Fig. 1B). Slowdowns in meridional overturning in the respective models (which are greater percentage-wise in the CCSM3 than the PCM) are not characterized by less warming over northern Europe in either model. The warming produced by increases in GHGs overwhelms any tendency toward decreased high-latitude warming from less northward heat transport by the weakened meridional overturning circulation in the Atlantic. There is more regional detail in the higher-resolution CCSM3 as compared to the PCM, with an El Niño-like response (30) in the equatorial Pacific (greater warming in the equatorial central and eastern Pacific than in the western Pacific) in the CCSM3 as compared to the PCM. This is related to cloud feedbacks in the CCSM3 involving the improved prognostic cloud liquid water scheme, as compared to the diagnostic cloud liquid water formulation in the PCM (31).

The warming commitment from the 20th-century stabilization experiments (Fig. 2, bottom) shows the same type of pattern in the

forced experiments, with greater warming over high latitudes and land areas. For regions such as much of North America, even after stabilizing GHG concentrations, we are already committed to more than an additional half a degree of warming in the two models. The pattern of the 20th-century stabilization experiments is similar to those produced in the 21st-century stabilization experiments with A1B and B1 (not shown).

Though temperature increase shows signs of leveling off 100 years after stabilization, sea level continues to rise unabated with proportionately much greater increases compared to temperature, with these committed increases over the 21st century more than a factor of 3 greater, percentage-wise, for sea level rise (32) than for temperature change (Fig. 3). Thus, even if we could stabilize concentrations of GHGs, we are already committed to significant warming and sea level rise no matter what scenario we follow. These results confirm and quantify earlier studies with simple and global models in that the sea level rise commitment is considerably more than the temperature change commitment.

#### References and Notes

1. J. A. Church *et al.*, in *Climate Change 2001: The Scientific Basis*, J. T. Houghton *et al.*, Eds. (Cambridge Univ. Press, Cambridge, 2001), pp. 639–693.
2. T. M. L. Wigley, *Science* **307**, 1766 (2005).
3. J. F. B. Mitchell *et al.*, *Geophys. Res. Lett.* **27**, 2977 (2000).
4. F. P. Bretherton *et al.*, in *Climate Change: The IPCC Scientific Assessment*, J. T. Houghton *et al.*, Eds. (Cambridge Univ. Press, Cambridge, 1990), pp. 173–194.
5. A. Kattenberg *et al.*, in *Climate Change 1995: The Science of Climate Change*, J. T. Houghton *et al.*, Eds. (Cambridge Univ. Press, Cambridge, 1995), pp. 285–357.
6. U. Cubasch *et al.*, in *Climate Change 2001: The Scientific Basis*, J. T. Houghton *et al.*, Eds. (Cambridge Univ. Press, Cambridge, 2001), pp. 525–582.
7. R. T. Wetherald *et al.*, *Geophys. Res. Lett.* **28**, 1535 (2001).
8. T. M. L. Wigley, S. Raper, in *Climate and Sea Level Change: Observations, Projections and Implications*, R. A. Warrick *et al.*, Eds. (Cambridge Univ. Press, Cambridge, 2003), pp. 111–133.
9. R. J. Stouffer, S. Manabe, *J. Clim.* **12**, 2224 (1999).
10. W. M. Washington *et al.*, *Clim. Dyn.* **16**, 755 (2000).
11. G. A. Meehl *et al.*, *Clim. Dyn.* **17**, 515 (2001).
12. G. A. Meehl *et al.*, *J. Clim.* **17**, 1584 (2004).
13. G. A. Meehl *et al.*, *Clim. Dyn.* **23**, 495 (2004).

14. G. A. Meehl *et al.*, *J. Clim.* **17**, 3721 (2004).
15. G. A. Meehl, C. Tebaldi, *Science* **305**, 994 (2004).
16. For a description of the CCSM3, see [www.cesm.ucar.edu](http://www.cesm.ucar.edu).
17. B. D. Santer *et al.*, *Science* **301**, 479 (2003).
18. The 20th-century solar forcing in the PCM is from (33). The 20th-century solar forcing in the CCSM3 is from (34).
19. C. K. Folland *et al.*, in *Climate Change 2001: The Scientific Basis*, J. T. Houghton *et al.*, Eds. (Cambridge Univ. Press, Cambridge, 2001), pp. 99–181.
20. L. Miller, B. C. Douglas, *Nature* **428**, 406 (2004).
21. J. A. Church *et al.*, *J. Clim.* **17**, 2609 (2004).
22. V. Ramaswamy, in *Climate Change 2001: The Scientific Basis*, J. T. Houghton *et al.*, Eds. (Cambridge Univ. Press, Cambridge, 2001), pp. 349–416.
23. I. C. Prentice *et al.*, in *Climate Change 2001: The Scientific Basis*, J. T. Houghton *et al.*, Eds. (Cambridge Univ. Press, Cambridge, 2001), pp. 183–237.
24. S. C. B. Raper *et al.*, *J. Clim.* **15**, 124 (2002).
25. M. M. Hall, H. L. Bryden, *Deep Sea Res.* **29**, 150 (1982).
26. D. Roemmich, C. Wunsch, *Deep Sea Res.* **32**, 619 (1985).
27. M. S. McCartney, L. D. Talley, *J. Phys. Oceanogr.* **14**, 922 (1984).
28. P. R. Gent, G. Danabasoglu, *J. Clim.* **17**, 4058 (2004).
29. A. Hu *et al.*, *J. Clim.* **17**, 4267 (2004).
30. G. A. Meehl, W. M. Washington, *Nature* **382**, 56 (1996).
31. G. A. Meehl *et al.*, *J. Clim.* **13**, 1879 (2000).
32. The sea level rise at the year 2100 in the 20th-century stabilization experiment is greater in the CCSM3 than in the PCM in Fig. 1C relative to the 1980–1999 base period, but they both have about the same percentage increase as compared to the total sea level rise that occurred during the 20th century in the respective models as depicted in Fig. 3. This is because the CCSM3 has greater total sea level rise during the 20th century than does the PCM (4.5 cm compared to 3.0 cm, respectively), partly due to the higher sensitivity of the CCSM3 as well as the comparative meridional overturning circulation processes discussed in the text.
33. D. V. Hoyt, K. H. Schatten, *J. Geophys. Res.* **98**, 18895 (1993).
34. J. Lean *et al.*, *Geophys. Res. Lett.* **107**, 10.1029/2001JD001143 (1995).
35. We acknowledge the efforts of a large group of scientists at the National Center for Atmospheric Research (NCAR), at several U.S. Department of Energy (DOE) and National Oceanic and Atmospheric Administration labs, and at universities across the United States who contributed to the development of the CCSM3 and who participated in formulating the 20th-century and future climate change simulations through the CCSM working groups on atmosphere, ocean, land surface, polar climate, climate change, climate variability, paleoclimate, biogeochemistry, and software engineering. In particular, we thank A. Middleton and V. Wayland from NCAR and M. Wehner at the National Energy Research Scientific Computing Center (NERSC) for their work in either running the model experiments or managing the massive amount of model data. The formidable quantity of supercomputer resources required for this ambitious modeling effort was made available at NCAR through the Initiative Nodes and the Climate System Laboratory and through DOE as part of its Advanced Scientific Research (ASCR). ASCR provides computing facilities at NERSC, Los Alamos National Laboratory (LANL), and the Oak Ridge National Laboratory (ORNL) Center for Computational Science. Additional simulations with the CCSM3 were performed by the Central Research Institute for the Electric Power Industry (CRIEPI), using the Earth Simulator in Japan through the international research consortium of CRIEPI, NCAR, and LANL under the Project for Sustainable Coexistence of Human Nature and the Earth of the Japanese Ministry of Education, Culture, Sports, Science and Technology. Portions of this study were supported by the Office of Biological and Environmental Research, DOE, as part of its Climate Change Prediction Program; and by the National Center for Atmospheric Research. This work was also supported in part by the Weather and Climate Impact Assessment Initiative at NCAR. NCAR is sponsored by NSF.

22 October 2004; accepted 24 January 2005  
10.1126/science.1106663