

Status Report

Overall Status: **AT RISK**

Project Name: Silt and Waste Recovery Taskforce

Date: Friday 09 June 2023

Report # 5

Frequency: Monthly

Prepared by: Darren de Klerk

Status Code Legend

- On Track: Project is on schedule
- At Risk: Milestones missed but date intact
- High Risk: At risk, with a high risk of going off track
- Off Track: Date will be missed if action not taken

Objective

To establish a sustainable taskforce model for the recovery and management of silt (sediment) and waste (debris) deposited across the wider Hawke's Bay whenua.

Priority

1. To create a taskforce model to sustainably manage the silt recovery including resourcing appropriate expertise
2. To secure funding to support the ongoing taskforce recovery programme
3. To support local contractors to collect silt deposited and manage silt deposit sites
4. To establish deposit sites to manage the silt recovered, with permanent end uses as the preferred outcome
5. To manage the activities undertaken to recover silt within regulatory and other required legislation
6. To provide confidence to the community in respect of environment controls, silt management and recovery methods
7. To provide clear communications and information to the community on the silt recovery taskforce work programme
8. To work in with internal and external stakeholders to ensure best for region outcomes

Executive Summary

To date 438 silt collection jobs received, 115 are complete, 84 require no further and 126 in progress either assessed, programmed or started. 26 new jobs have been received in the last fortnight. A data cleanse took place and identified a number of double ups, hence the increase in 'no further action required.'

On the 03 May 2023, Central government announced a \$133.2m funding package to Hawke's Bay for the ongoing clean up and recovery of land from sediment and debris. \$70.6m of that is to go to local authorities to continue to fund our existing service delivery model and allow Napier City and Wairoa District to continue to provide their services in respect of silt (sediment) clean up. The fund does include a wide brief for debris, and mixed waste and woody debris fall within this. The taskforce will take an overarching coordination of woody debris across all area.

For the commercial sector (businesses impacted by Cyclone Gabrielle, of the \$133.2million, \$62.6m has been set aside for affected business to apply for a grant of \$40k, with a further \$210k available if a 50/50 cost share is applied. Focus has been on meeting government requirements to open the application process and to finetune the eligibility and criteria to ensure those most affected receive the funds. The release of the applications to the commercial category funding – opened to businesses on the 6th June 2023.

Resourcing of the taskforce is progressing with some contract management and wood coordination making good progress in the last 2 weeks. Along with the appointment of a dedicated management accountant to support the management of the budget and the payment to suppliers.

On the ground in the last month, further sites were closed at Puketapu Road, Waiohiki Golf Course and Omarunui River Site, while three more large sites commenced operation at 451 Omarunui Road, 1016 Dartmoor and Waipunga Road in Esk Valley. Engagement with community and the sector remains a focus, with regular time out in the Esk area, and HB Growers getting focus. Mixed waste remains a focus with a new site coming online in Esk and Pakowhai coming online to sort mixed debris.

Scope

The scope of the Taskforce covers calls received through the 0800 108 838 number and [online form](#), or as otherwise directed to the Taskforce via email and other means, the information within this reports relates to that data captured. The first calls were received on 23 February 2023. The Taskforce is not currently covering the Napier Urban area – unless a call has been noted as rural.

These calls and those within the Awatoto cordon area are being managed by Napier City Council. This report also excludes the roading recovery works, and it should be noted a significant amount of silt has been cleared from roads since the 14th February 2023 event, with 90 roading crews working across the Hastings District since the event – a broad estimate is in the excess of 1 million cubic metres of sediment, debris and silt has been shifted. Some deposit sites act as roading and private silt sites.

Key Information at 09 June 2023

Jobs received to date	438 417 – HBRC RURAL 21 – HDC URBAN	Jobs completed No further action Jobs assessed/ in progress	115 84 126
Oldest/ First Job received	23-Feb-2023	Silt collected to date Silt Estimated to be collected	350,000m ³ – Estimate ~1,000,000m ³ – Estimate
Capacity at Live Sites Remaining Capacity at Live Sites	1,200,000m ³ - Estimate 450,000m ³ - Estimate	Trucks movements Crews working	Average 900 per day 19 contractors engaged 30 crews – Estimate
Number of Live Sites Sites In Preparation Sites at Feasibility	8 3 17	Silt Samples collected	550 – Planned Samples 6 – On Request
Costs to date:	<u>Region</u>	<u>To 30 June 2023</u>	<u>To 30 June 2024</u>
	Taskforce	\$5.2m	\$35.6m
	HBRC	\$4.3m	Taskforce
	Napier CC	\$4.8m	\$7.2m
	Hastings DC	\$3.7m	Taskforce
	Wairoa DC	\$3.0m	\$6.4m
	CHB DC	\$0.15m	Taskforce
	TOTAL	~\$21.225m	~\$49.37m

<p><u>Consenting:</u></p> <p>Sites under S330 notification</p> <p>Consents being prepared</p> <p>Consents lodged</p> <p>Consents approved</p> <p>Consents declined</p>	<p>Eight</p> <p>Six</p> <p>Two</p> <p>Zero</p> <p>Zero</p>	<p>Compliance Concerns</p> <p>Complaints</p>	<p>Silt against stop banks</p> <ul style="list-style-type: none"> • Dust • Silt on Road • Speeding • Septic Tank Waste
<p>Issues to be escalated & Risks to Highlight</p>	<ul style="list-style-type: none"> ● Waste Levy implications ● Scope that the taskforce is operating within – how much silt do we collect? ● Public perception and patience with working through backlog ● Supporting residents to remove silt, reduce double handling ● Consenting sites including iwi engagement ● Hydrology understanding of new deposit sites, and issues created by removing silt 		
<p>Milestones accomplished since taskforce stood up:</p>	<ul style="list-style-type: none"> ● Released online apps, data received back ● Streamlined customer service function and process including online form ● Engagement with Esk Community ● Clarity on consenting with HBRC ● Engagement with MfE, ICNZ, EQC, and other agencies to support the recovery ● Release Commercial Category Funding 		
<p>Milestones planned for next week:</p>	<ul style="list-style-type: none"> ● Implement Dashboard to provide live snapshot into progress to date ● Improve Silt Website information and Strengthen general communications and messaging ● Identify, negotiate further sites and bring these sites online ● Financials, and POs standardized through the Taskforce ● Resourcing in general across the team ● Contractor agreements ● Improve coordination of debris and wood 		

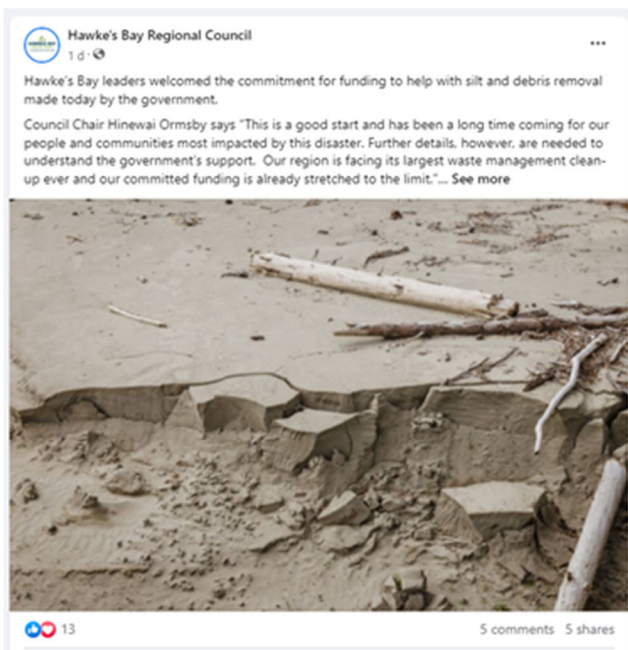
Key Decisions

Decision	Details	Date Made	Authorised by
Establish taskforce	Following an outline case for change – gain approval to establish a regional taskforce across the two predominant affected areas/ councils	22/03/2023	Craig Thew / Chris Dolley
Introduce Zone Areas for collections	To split the collection areas into zones – to improve collection timeframes, efficiencies and ownership of area	28/03/2023	Silt Recovery Lead
Bring on new contractors to service collections	To widen the contractor base to better resource the zoning and share workload	29/03/2023	Silt Recovery Lead + James Feary
Establish new sites to receive silt	To combine existing sites regardless of council responsibility, and investigate new sites that are strategically placed close to affected communities	27/03/2023	Silt Recovery Lead + James Feary + Graeme Hansen
Resourcing the Taskforce	To resource the Taskforce with the appropriate skills to support a sustainable model	27/03/2023	Ongoing
Government funding announcement	Government released funding announcement – HERE Funding Agreement signed with HBRC as lead agency	03/05/2023	Cabinet DIA
MfE LGOIMA	MfE comfortable with LGOIMA response and information provided, next step to register and report on sites	15/05/2023	MfE

Silt Specific Communications and Engagement Activities (last 2 weeks)

- 26 April 2023 – Interview with Future Farming Trust
- 27 April 2023 – Havelock North Community Meeting
- 28 April 2023 – Site Visits with MfE Officials
- 28 April 2023 – Interview with Radio NZ
- 02 May 2023 – Meeting with HDC Councillors
- 03 May 2023 – Meeting with Esk community
- 03 May 2023 – Webinar with DIA/ MfE on Funding
- 04 May 2023 – Interview with One News
- 05 May 2023 – Interview with Rural Exchange Radio
- 17 May 2023 – Meeting with Esk community
- 19 May 2023 – Zoom with Growers-Commercial Fund
- 24 May 2023 – Interview with HB App
- 24 May 2023 – Presentation to Engineering NZ
- 31 May 2023 - Meeting with Esk community

We continue to regularly update the community with social posts and videos from the taskforce covering the latest stats, silt deposit sites, potential uses for silt, and more. We’re getting positive responses and hundreds of views on the videos.



We sent out a media release related to commercial funding, and have had interest from media in getting updates to the community. Darren was interviewed by HB App recently who wanted a general update on the work of the Taskforce, and plans.

We have sent out two newsletters to community leaders, mana whenua, and councillors. This has more detailed updates of the Taskforce’s mahi, funding, latest statistics, and helpful links. We also release a regular newsletter to our contractors, with two of these released to date.

Silt Collections Logged by Area

	Zone 1	Zone 2	Zone 3	Zone 4	Zone 5	Zone 6	Other	TOTAL
Needs Assessment	7	9	12	21	13	1		63
Assessed	41	11	9	20	9			90
Contractor Assigned								0
Programmed		19	2	3				24
In Progress	4	10	8	12	2			36
Completed	6	19	35	27	28			115
On Hold	1	17		5	1			24
No Further Action Required	15	40	11	9	7	1	1	84
No Status	1	1						2
TOTAL	71	124	75	97	60	2	1	438

Zones for Silt Collection

Zone	Area	Job by Zone
Zone 1	EskValley, Whirinaki, Bayview, Glengarry, Tangoio	74
Zone 2	Awatoto, Napier, Meanee, Taradale, Pakowhai, Clive, Whakatu	126
Zone 3	Puketapu North, Rissington, Dartmoor, Poraiti, Puketitiri	77
Zone 4	Puketapu South, Waiohiki, Omahu, Fernhill, Pukehomoamo, Crownthorpe, Sherenden, Moteo + plus rural areas between rivers	97
Zone 5	Twyford, Clive, Whakatu, Tomoana, Hastings, Havelock North, Maraekakaho, Tukituki	61
Zone 6	CHB – Otane, Waipawa, Wallingford	1
TOTAL		438

Other Waste Streams – Jobs

Waste Stream	# Jobs logged	# jobs completed	Comments
Orchard and Vineyard Waste	32	TBC	Integrated into silt collections, with clean up focus on property to separate
Animal Carcass	46	TBC	Berketts in place collecting
Wood Debris	63	24	Bin Hire, DGL, and Pro Arbore engaged
Hazardous	6	4	3 R in place to collect
General Waste	9	TBC	Back to councils or Works Group
HDC – Household Effects	508	487	HDC managing household effects
NCC Silt Jobs	21	TBC	NCC managing urban collections
HBRC Silt Jobs	417	115	Taskforce coordinatng and managing collections
HDC Silt Jobs	20		Taskforce coordinatng and managing collections

Environmental Compliance and Testing

SILT RECEPTOR SITE SAMPLING AND ANALYSIS DASHBOARD

	CHESTERHOPE	287 DARTMOOR	504 PUKETAPU	WAIHIKI GC	BRIDGE PA	MCLEOD	OMARUNUI RIVER	1016 DARTMOOR	Class 5 (cleanfill) waste acceptance criteria, with source references
Heavy Metals (UCL 95% for all samples at each site)									
Asenic	6.1	4.1	4.0	5.6	6.1	8.8	4.8	2.8	9 a
Cadmium	0.07	0.05	0.05	0.06	0.07	0.10	0.05	0.05	0.7 a
Chromium	18.0	14.2	14.3	17.1	18.2	21.5	15.8	10.8	24 a
Copper	12.7	5.4	7.0	10.1	16.0	20.0	7.5	4.0	32 a
Lead	17.9	8.1	8.1	23.5	16.3	17.2	10.5	5.8	27 a
Nickel	13.3	10.0	11.5	13.2	11.6	15.7	11.9	8.4	17 a
Zinc	61.4	40.3	42.7	56.8	58.9	71.7	49.1	33.6	105 a
Petroleum Hydrocarbons									
C ₇ -C ₉	Not detected	Not detected	Not detected	Not detected	Not detected	Not detected	Not detected	Not detected	110 b
C ₁₀ -C ₁₄	Not detected	Not detected	Not detected	Not detected	Not detected	Not detected	Not detected	Not detected	58 b
C ₁₅ -C ₂₈	24.3	4346.9	Not detected	Not detected	Not detected	Not detected	Not detected	Not detected	40 c
Total TPH (C ₇ -C ₂₈)	Not detected	Not detected	Not detected	Not detected	Not detected	Not detected	Not detected	Not detected	80-90 c
Fluoranthene	-	-	-	-	-	-	-	-	0.5 c
Benzo[a]pyrene eq	-	-	-	-	-	-	-	-	2 b
Pesticides and Herbicides									
Dieldrin	Not detected	Not detected	Not detected	Not detected	Not detected	Not detected	Not detected	Not detected	0.57 d
DDT	Not detected	Not detected	Not detected	Not detected	Not detected	Not detected	Not detected	Not detected	0.7 b
Other OCP	Not detected	Not detected	Not detected	Not detected	Not detected	Not detected	Not detected	Not detected	-
Acid herbicides	Not detected	Not detected	Not detected	Not detected	Not detected	Not detected	Not detected	Not detected	-
GNCP	Not detected	Not detected	Not detected	Not detected	Not detected	Not detected	Not detected	Not detected	-
No. of sampling events	9	9	10	9	2	3	3	1	
Total samples collected	72	64	66	52	10	34	30	5	
Results over 'whole of fill' comply with Class 5/cleanfill criteria									
Results over 'whole of fill' exceed Class 5/cleanfill criteria									

Waste acceptance criteria source references

- a: Hawke's Bay Region: Background soil concentrations for managing soil quality, Landcare Research, 2014
- b: Technical Guidelines for Disposal to Land, Rev 3, Waste Management Institute of New Zealand (WasteMINZ), October 2022
- c: For contaminants with no value published in reference a, b or d, the detection limit for the analysis has been adopted as background/class 5 criteria
- d: Ambient concentrations of selected organochlorines in soil, MFE 1998. Table F2 Ruahine Forest Park/HB/East Coast

Silt Deposit/ Disposal Sites at 09 June 2023

OPERATIONAL SITES

Site Name/ Location	Site Status	Contractor	Land Area ha	Site Capacity	Pile Height	Capacity Left	Site Visits this week
23 Shaw Road	Operational	Hicks	2 ha	50,000m ³	2.5m	100%	2
2 Waipunga Road	Operational	Hicks	2 ha	50,000m ³	2.5m	80%	2
Chesterhope Station	Operational	ACM	5.6 ha	60,000m ³	1m	20%	1
287 Dartmoor Road	Operational	Fulton Hogan/ Topline	5.6 ha	56,000m ³	1m	30%	2
504 Puketapu Road	Closed	Berketts	8 ha	160,000m ³	2m - 4m	0%	2
626 Omarunui Road	Operational	Pro Arbore/ Hogfuel	N/A	Processing site only	N/A	N/A	2
Omarunui Road - Bearsley	Operational	Goodmans/ Gairs	9.5ha		0.5m - 5m	98%	2
1016 Dartmoor Road	Operational	Galbraith Earthmovers	11.8 ha	177,000m ³	1.5m	97%	2
555 Esk Road	Operational	Compost NZ	7 ha	N/A	0.5m	N/A	2

INVESTIGATED SITES

Site Name/ Location	Site Status	Contractor	Land Area ha	Site Capacity	Pile Height	Capacity Left	Site Visits this week
316 Hwy 5 Esk	For Review	Compost NZ?	25 ha	255,000m ³	1m	100%	1
Caravan Park Esk	TBC	Hick Bros	2.5 ha	24,412m ³	1m	100%	1
Strawberry Farm Esk	For Review	Compost NZ?	TBC	N/A	TBC	TBC	0
Johhny Appleseed	TBC		15 ha	TBC	TBC	TBC	1
335 Dartmoor Road	TBC		1.8ha X 3	N/A	N/A	N/A	1
335 Dartmoor Road	TBC						

NEW SITES (UPCOMING)

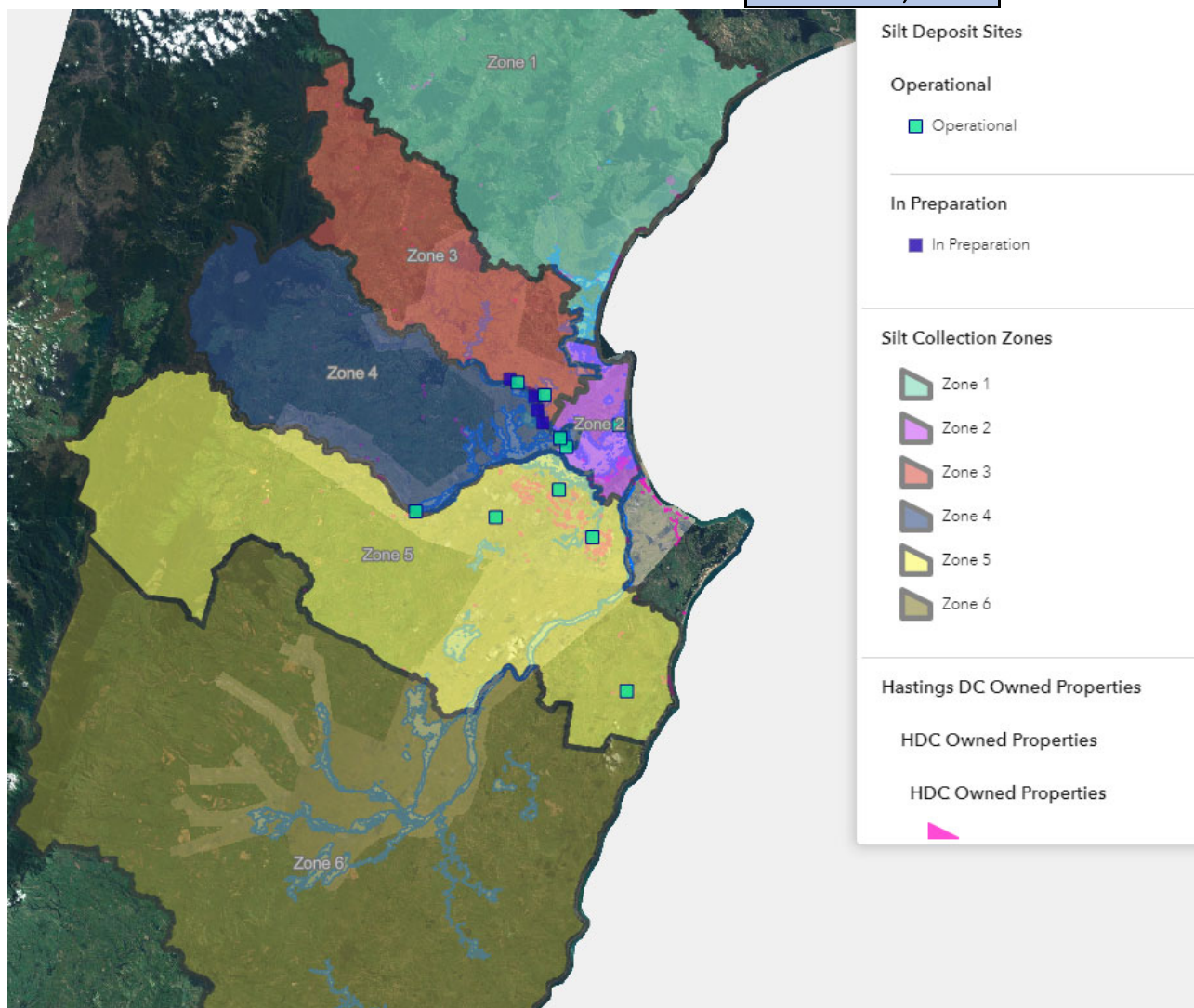
Site Name/ Location	Site Status	Contractor	Land Area ha	Site Capacity	Pile Height	Capacity Left	Site Visits this week
Moteo Pa Road	TBC	Bare Knuckle	N/A	TBC	N/A	100%	0
355 Dartmoor	In Preparation	Berketts	10 ha	N/A	N/A	N/A	1
2099 Pakowhai	In Preparation	Bin Hire	6 Ha	N/A	N/A	N/A	1

CLOSED SITES

Site Name/ Location	Site Status	Contractor	Land Area ha	Site Capacity	Pile Height	Capacity Left	Site Visits this week
Omarunui River Site	Closed	HB Civils	2.1 ha	31,500m ³	1m-1.5m	N/A	N/A
Omarunui Landfill - Valley E	Cancelled	HB Civils	N/A	Processing site only	N/A	N/A	N/A
Waohiki Golf Course	Closed	HB Civils	1.2 ha	24,000m ³	1.2	TBC	N/A
Bridge Pa Quarry	Cancelled	Downer		N/A	N/A	N/A	N/A
72 Tait Road	Cancelled	Composting NZ*		N/A	N/A	N/A	N/A
McLeod Road	Closed	Berketts	3.3 ha	Unknown	N/A	N/A	N/A

Site Overview (Survey Volume)

Site	Survey 1 - onsite volume	Survey 2 - onsite volume	TOTAL
504 Puketapu Road	49,277.06	105,194.89	
Waiohiki Golf Course	8,382.54	20,392.7	
Franklin Rd – Chesterhope Station	18,418.69	33,986.19	
287 Dartmoor Rd	22,307.73	47,456.28	
Omaranui Rd – River Site	8,168.04	34,450.67	
McLeod Rd, Awatoto	9,645.19	13,395.19	
Bridge PA	29,047.89	closed	
355 Dartmoor Rd	72,115.58		
451 Omarunui Road (Bearsley)	64,452.74		
2 Waipunga Road/ 23 Shaw Road	103,631.94		
1016 Dartmoor Road – Sacred Hill			
555 SH5, Esk			
			495,076m3



Spend to Date – Taskforce and HDC only

Activity	Costs to date to end May 2023	Estimate to June 2024
Silt Collection	\$3,039,035.54	\$18,466,732.00
Silt Site Management	\$4,461,051.89	\$7,500,000.00
Leases	None to date	\$635,929.50
Wood Collection	\$854,447.01	\$5,000,000.00
Consultant Support	\$407,983.85	Incl. above
Staff	\$10,316.00	\$706,000.00
Other	\$855.00	
Debris Mgmt		\$4,000,000.00
TOTAL	\$8,773,689.29	\$35,672,732.00

Wood Debris Management

HB Forestry Group were engaged by HBRC to undertake clean up – 2 weekly updates provided, anticipate to date approx. 100,000m³ of wood has been cleaned up across Hawke’s Bay

Objective: To create a funding pathway for HBF to prioritise and coordinate the removal of LWD from private properties relating to the mixture of Large Woody Debris (LWD) associated with Cyclone Gabrielle to expediate the recovery for the communities affected across Hawke’s Bay. Agreement between Hawke’s Bay Regional Council (HBRC) and Hawke’s Bay Forestry Group (HBF) acknowledging suitability for forest contractors in LWD clean-up and cost sharing as a matter of public and private concern.

Funding pathway established between HBRC and HBF to begin works under a Memorandum of Understanding (MOU) from April 11. Work prior covered under various emergency works projects. Work within the MOU recognizes the capacity for the HBF to provide coordination.

- \$100,000 Pan Pac contribution
- \$40,000 Rayonier-Matariki contribution
- \$35,000 FMNZ contribution

Payment in-kind:

- 1 x FTE Pan Pac
- 1 x FTE FMNZ
- 1 x FTE Rayonier-Matariki

Cost incurred to date by Taskforce : \$646,245



Aropaoanui

- Logs stacked in burn piles along riverbank ready for burning
- Logs stacked in burn piles along beach ready for burning
- 2 x 48hr burn periods required with FENZ firefighting oversight. Est. cost \$22,560
- Cost to date: \$45,985

Esk

- Sector 1 (Waipunga) virtually completed. Some hogging to continue before hogger moves into riverside clean-up. Log stockpile (boiler fuel) uplifted to Pan Pac and silt site works began this period.
- Sector 2 (Ellis Wallace) Culvert clearing work completed. Costs TBD.
- Sector 3 (Lower Esk) New sector aimed at capturing the Esk Delta area. Area from SH2 to SH5 to Waipunga. Works are well underway with log stockpiles sold export for landowners'. Boiler fuel stockpiles soon to be uplifted to Pan Pac. Stump grinder mulching large debris piles and stumps. Hogger to arrive as it progresses downstream on true right bank and crosses to true left bank before carrying on past Pan Pac Mill forest.
- Cost to date: \$406,296



Dartmoor Road

- Stopbank hogging taking longer than anticipated.
- Morice's and Evan's properties completed. Mulch removal underway. Mulch taken to locals willing to accept mulch. Further sites needed.
- Wilson's properties large debris work begun. Hogging to come after Stopbank work completed.
- Campbell's hogging nearly completed and freeing up second hogger (blue and white wheeled)
- Crew working down both sides of road towards Puketapu.
- Estimated 10 – 20,000 t log stockpiles.
- Cost to date: \$174,951



Silt Recovery Taskforce Structure

Role	Responsibility
Silt Recovery Lead	Overall leadership, coordination for the silt recovery activity across HBRC and HDC
Process Lead and Project Support	To tie in process with implementation, and assist the team to build a sustainable delivery model. To implement process improvements like dashboarding, online forms.
Communications & Engagement	Communication to the community via website, FB, key stakeholders – Mayor/ Chair. Support engagement with affected communities
Customer Experience Project & Admin Support	Lead the process for incoming enquiries Support to overall activity, includes regular reporting to be setup and fall back for process management including action plan
Consenting	Team to manage s330 notification, consenting sites, helping to identify future site consenting risks, engagement support related to consenting
Env Management / Compliance, Testing Volume Monitoring	Support to ensure compliance with consents – testing of silt and sites, mgmt. plans Drone Survey to measure volumes Material testing
Site Identification & Development	Identification of new sites, management of landowner relationships – development of sites to facilitate silt; Management of contractors operating sites including environmental controls and other consenting considerations
Site Management	Management of contractors operating sites including environmental controls and other consenting considerations
Contractor Collection Coordination	Management and coordination of contractors engaged to collect silt and transport to disposal sites including link to customer service.

Circulation List

Group	Email
Councillors	HDC and HBRC Councillors (revised version)
Executive Teams	HDC and HBRC Exec Teams
Recovery Groups	gabriellerecovery@hdc.govt.nz ; Annette Hilton; Louise McPhail; Julie-Anne McPhee; Richard Wakelin
Internal Stakeholders	Carly Price, HDC Env Waste Team, HDC Roding Team, CX Teams
External Stakeholders	Mfe, MPI, Rural Advisory, Iwi Partners, Regional Waste teams, NZ Apples and Pears, Horticulture NZ

Photos

Chesterhope Station – Franklin Road (05-04-2023) and (05-05-23)



Waiohiki Golf Course – Omarunui Road (05-04-2023) and (05-05-2023)



Dartmoor Road – HDC Land (13-04-2023) and 11-05-2023



504-540 Puketapu Road (13-04-2023) and 11-05-2023



451 Omarunui (Beardsley) (21-04-2023)



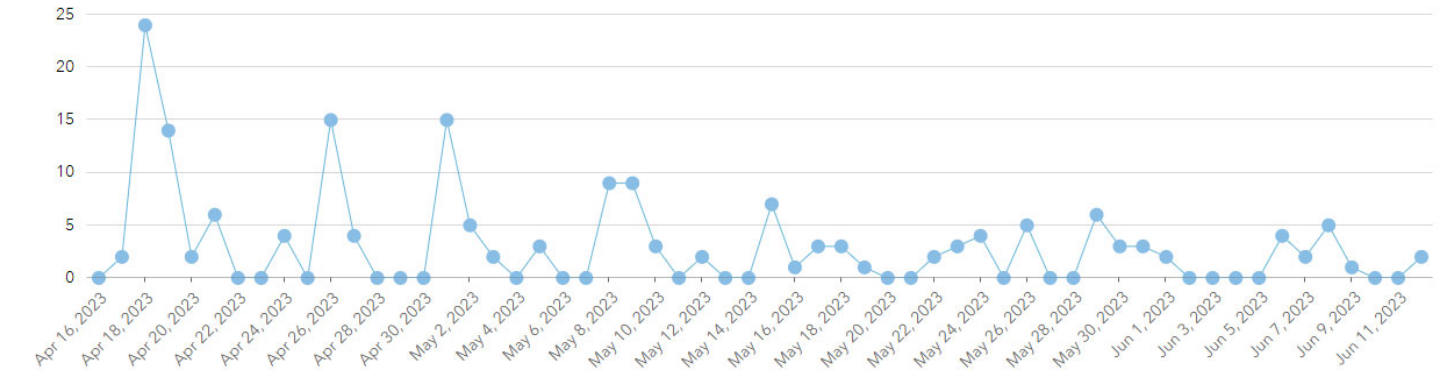
1016 Dartmoor Road (Sacred Hill) – 17/05/2023



Waipunga Road, Esk Valley – 11/05/2023



Appendices – Information from Online System – New Jobs Received



Appendices – Process for Authorised Contractors and Demarcation with EQC/ Insurance Council



Within 8m of house footprint and up to 60m of driveway access	EQC/ Insurance cover
Clean up outside the 8m footprint or 60m driveway/ accessway	Landowner Cost
Loading and carting from collection point and transport to deposit site	Taskforce/ Council cost

**There will be times where there is no collection point as the contract loads into a truck and has authorisation to take straight to Council/ Taskforce deposit site. A cost share will be agreed here.*